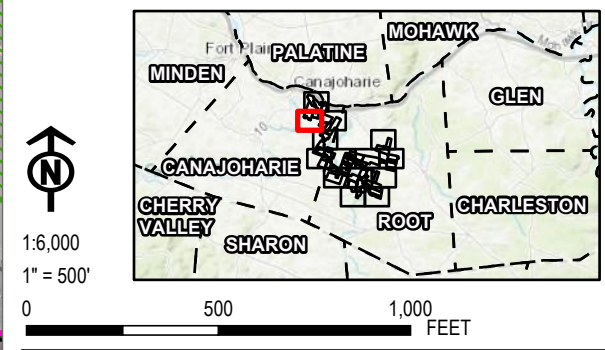
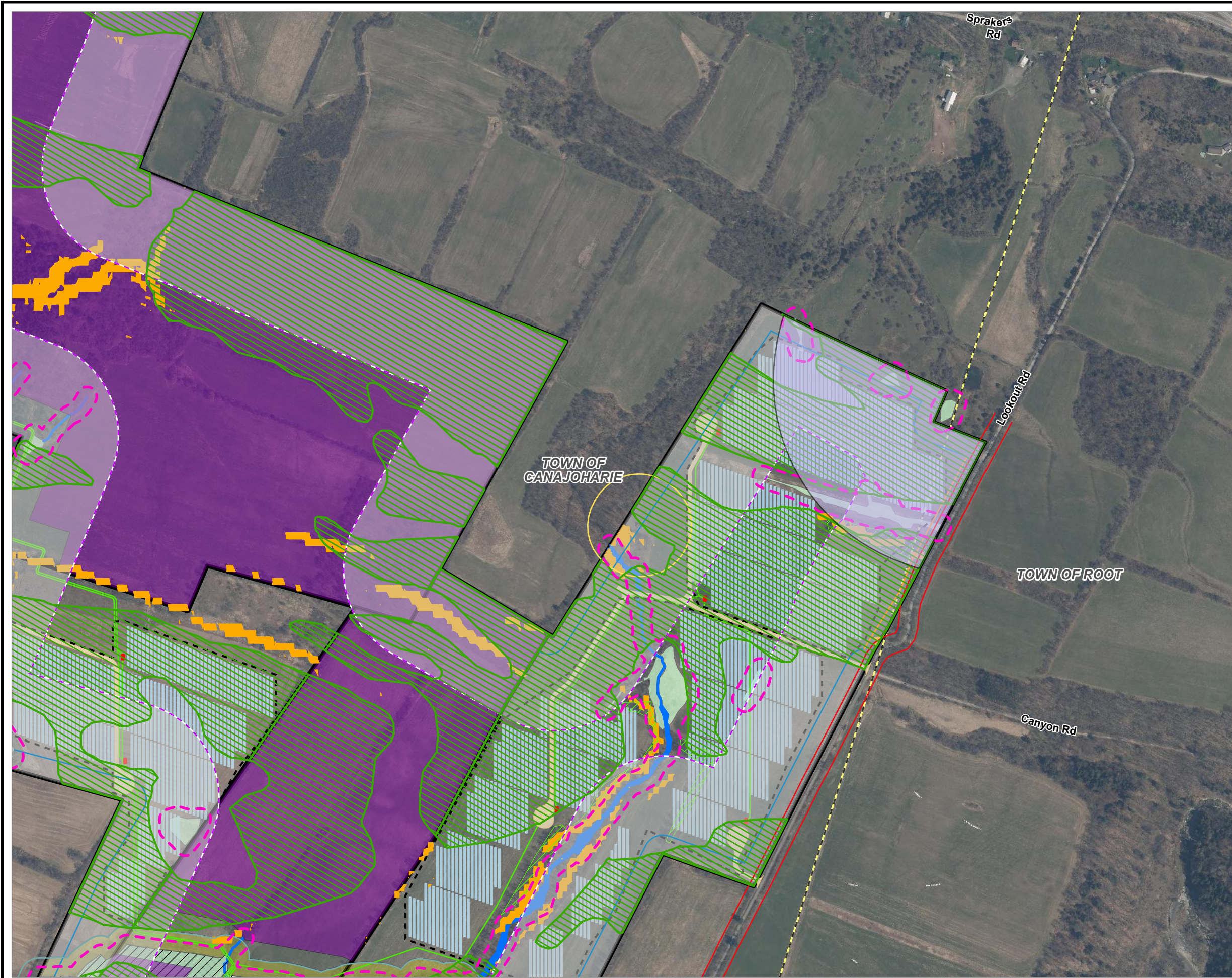


- LEGEND**
- FACILITY SITE
 - FENCELINE
 - PV RACKS
 - ACCESS ROADS
 - INVERTERS
 - COLLECTION LINE
 - DELINEATED WETLAND
 - DELINEATED STREAM
 - STATE JURISDICTIONAL WETLAND
 - 100-FOOT REGULATORY WETLAND BUFFER
 - LAND OWNER EXCLUSION AREA
- SLOPE**
- 15 - 34
- TREE CLEARING >= 20,000 SQUARE FEET (TOWN OF CANAJOHARIE)**
- SETBACKS**
- 100' NON-PARTICIPATING RESIDENTIAL PARCEL
 - 100' ORES WETLAND BUFFER
 - 250' RESIDENCE
 - 50' FROM ROAD CENTER LINE
 - 500' NON-PARTICIPATING PARCEL
 - PRIME AND IMPORTANT FARMLANDS GREATER THAN 20% OF PARCEL (TOWN OF CANAJOHARIE)
 - 50' ECOLOGICAL INTEREST BUFFER

NOTES:
1. THIS FIGURE IS DESIGNED TO BE VIEWED OR PRINTED IN COLOR AT 11X17.
BASE MAP: NYSGIS "LATEST ORTHOIMAGERY" 2021 ONLINE SERVICE LAYER.
DATA SOURCES: SUNEAST, TRC, NYSGIS

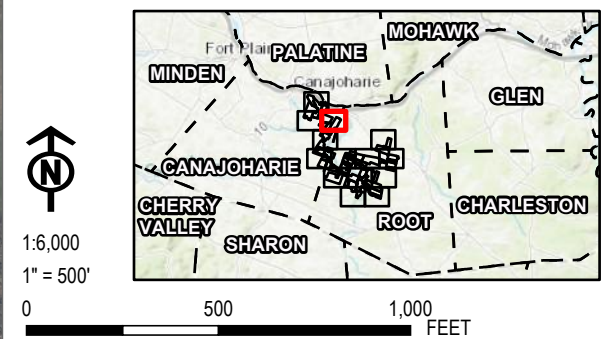


PROJECT:		FLAT CREEK SOLAR TOWNS OF CANAJOHARIE AND ROOT MONTGOMERY COUNTY, NY	
TITLE:		FACILITY SITE SETBACKS AND EXCLUSION AREAS	
DRAWN BY:	G. CORYELL	PROJ. NO.:	427281.2022.0000
CHECKED BY:	S. KRANES	FIGURE 24-1 Sheet 2 of 14	
APPROVED BY:	S. KRANES		
DATE:	AUGUST 2024		

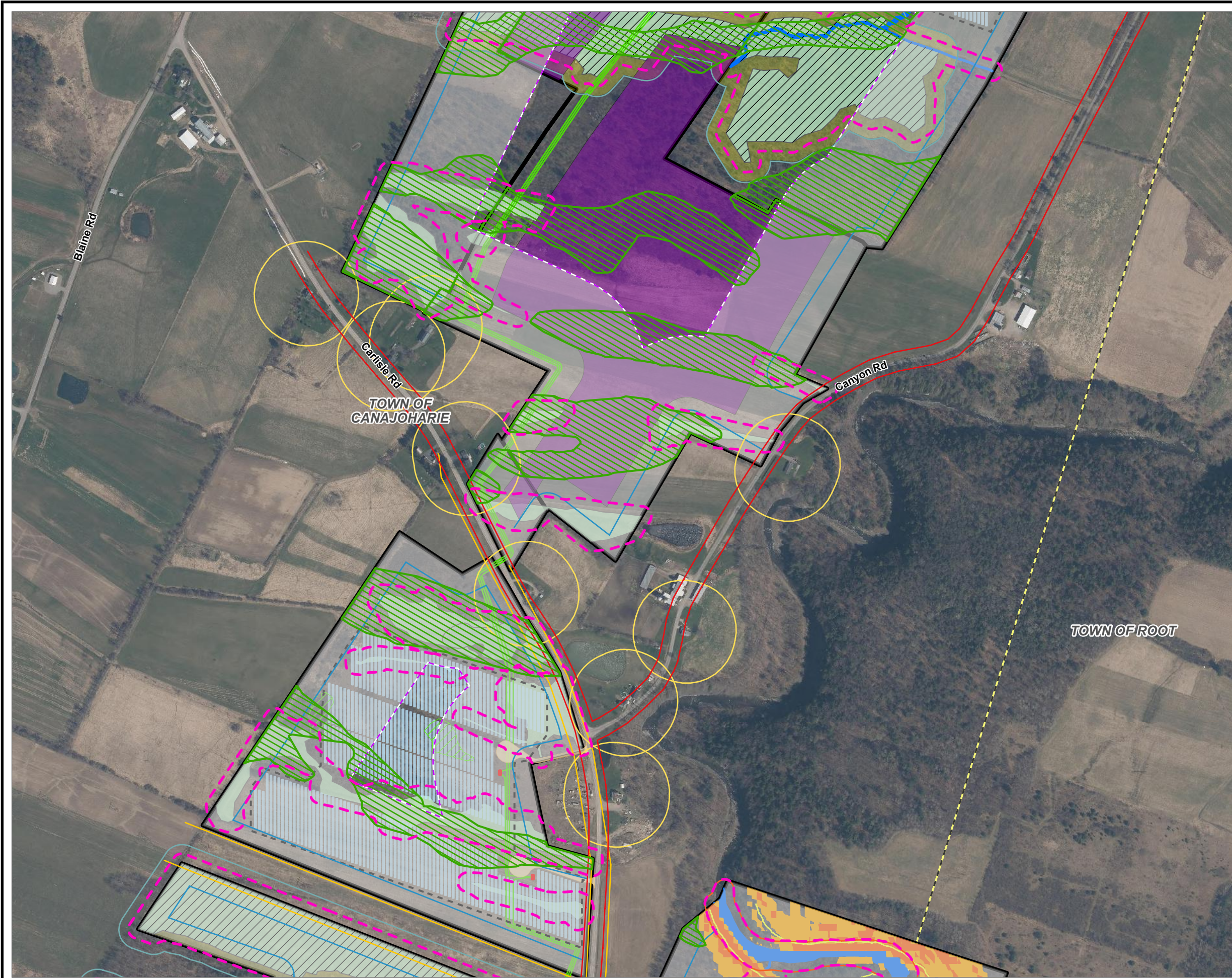


- LEGEND**
- FACILITY SITE
 - FENCELINE
 - PV RACKS
 - ACCESS ROADS
 - INVERTERS
 - COLLECTION LINE
 - DELINEATED WETLAND
 - DELINEATED STREAM
 - STATE JURISDICTIONAL WETLAND
 - 100-FOOT REGULATORY WETLAND BUFFER
 - LAND OWNER EXCLUSION AREA
- SLOPE**
- 15 - 34
- TREE CLEARING >= 20,000 SQUARE FEET (TOWN OF CANAJOHARIE)**
- SETBACKS**
- 100' NON-PARTICIPATING RESIDENTIAL PARCEL
 - 100' ORES WETLAND BUFFER
 - 250' RESIDENCE
 - 50' NON-PARTICIPATING NON-RESIDENTIAL PARCEL
 - 50' FROM ROAD CENTER LINE
 - 500' NON-PARTICIPATING PARCEL
 - PRIME AND IMPORTANT FARMLANDS GREATER THAN 20% OF PARCEL (TOWN OF CANAJOHARIE)
 - 50' ECOLOGICAL INTEREST BUFFER
 - 1000' DRINKING WATER SOURCE BUFFER

NOTES:
1. THIS FIGURE IS DESIGNED TO BE VIEWED OR PRINTED IN COLOR AT 11X17.
BASE MAP: NYSGIS "LATEST ORTHOIMAGERY" 2021 ONLINE SERVICE LAYER.
DATA SOURCES: SUNEAST, TRC, NYSGIS

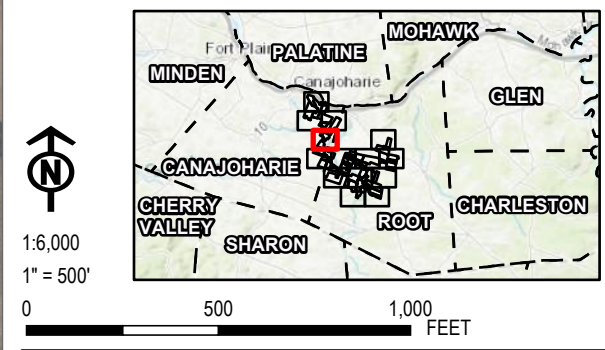


PROJECT:		FLAT CREEK SOLAR TOWNS OF CANAJOHARIE AND ROOT MONTGOMERY COUNTY, NY	
TITLE:		FACILITY SITE SETBACKS AND EXCLUSION AREAS	
DRAWN BY:	G. CORYELL	PROJ. NO.:	427281.2022.0000
CHECKED BY:	S. KRANES	FIGURE 24-1 Sheet 3 of 14	
APPROVED BY:	S. KRANES		
DATE:	AUGUST 2024		



- LEGEND**
- FACILITY SITE
 - FENCELINE
 - PV RACKS
 - ACCESS ROADS
 - INVERTERS
 - COLLECTION LINE
 - DELINEATED WETLAND
 - DELINEATED STREAM
 - STATE JURISDICTIONAL WETLAND
 - 100-FOOT REGULATORY WETLAND BUFFER
 - LAND OWNER EXCLUSION AREA
- SLOPE**
- 15 - 34
 - 35 - 74
- TREE CLEARING >= 20,000 SQUARE FEET (TOWN OF CANAJOHARIE)**
- SETBACKS**
- 100' NON-PARTICIPATING RESIDENTIAL PARCEL
 - 100' ORES WETLAND BUFFER
 - 100' OVERHEAD LINES
 - 25' FEMA
 - 250' RESIDENCE
 - 50' ORES STREAM
 - 50' FROM ROAD CENTER LINE
 - 500' NON-PARTICIPATING PARCEL
 - PRIME AND IMPORTANT FARMLANDS GREATER THAN 20% OF PARCEL (TOWN OF CANAJOHARIE)
 - 50' ECOLOGICAL INTEREST BUFFER

NOTES:
1. THIS FIGURE IS DESIGNED TO BE VIEWED OR PRINTED IN COLOR AT 11X17.
BASE MAP: NYSGIS "LATEST ORTHOIMAGERY" 2021 ONLINE SERVICE LAYER.
DATA SOURCES: SUNEAST, TRC, NYSGIS



PROJECT:		FLAT CREEK SOLAR TOWNS OF CANAJOHARIE AND ROOT MONTGOMERY COUNTY, NY	
TITLE:		FACILITY SITE SETBACKS AND EXCLUSION AREAS	
DRAWN BY:	G. CORYELL	PROJ. NO.:	427281.2022.0000
CHECKED BY:	S. KRANES	FIGURE 24-1 Sheet 4 of 14	
APPROVED BY:	S. KRANES		
DATE:	AUGUST 2024		



LEGEND

- FACILITY SITE
- FENCELINE
- PV RACKS
- ACCESS ROADS
- INVERTERS
- COLLECTION LINE
- DELINEATED WETLAND
- DELINEATED STREAM
- STATE JURISDICTIONAL WETLAND
- 100-FOOT REGULATORY WETLAND BUFFER

SLOPE

- 15 - 34

SETBACKS

- 100' NON-PARTICIPATING RESIDENTIAL PARCEL
- 100' ORES WETLAND BUFFER
- 100' OVERHEAD LINES
- 250' RESIDENCE
- 50' NON-PARTICIPATING NON-RESIDENTIAL PARCEL
- 50' FROM ROAD CENTER LINE
- 500' NON-PARTICIPATING PARCEL
- 50' ECOLOGICAL INTEREST BUFFER
- 1000' DRINKING WATER SOURCE BUFFER

NOTES:

1. THIS FIGURE IS DESIGNED TO BE VIEWED OR PRINTED IN COLOR AT 11X17.
BASE MAP: NYSGIS "LATEST ORTHOIMAGERY" 2021 ONLINE SERVICE LAYER.
DATA SOURCES: SUNEAST, TRC, NYSGIS

1:6,000
1" = 500'

0 500 1,000 FEET

PROJECT:

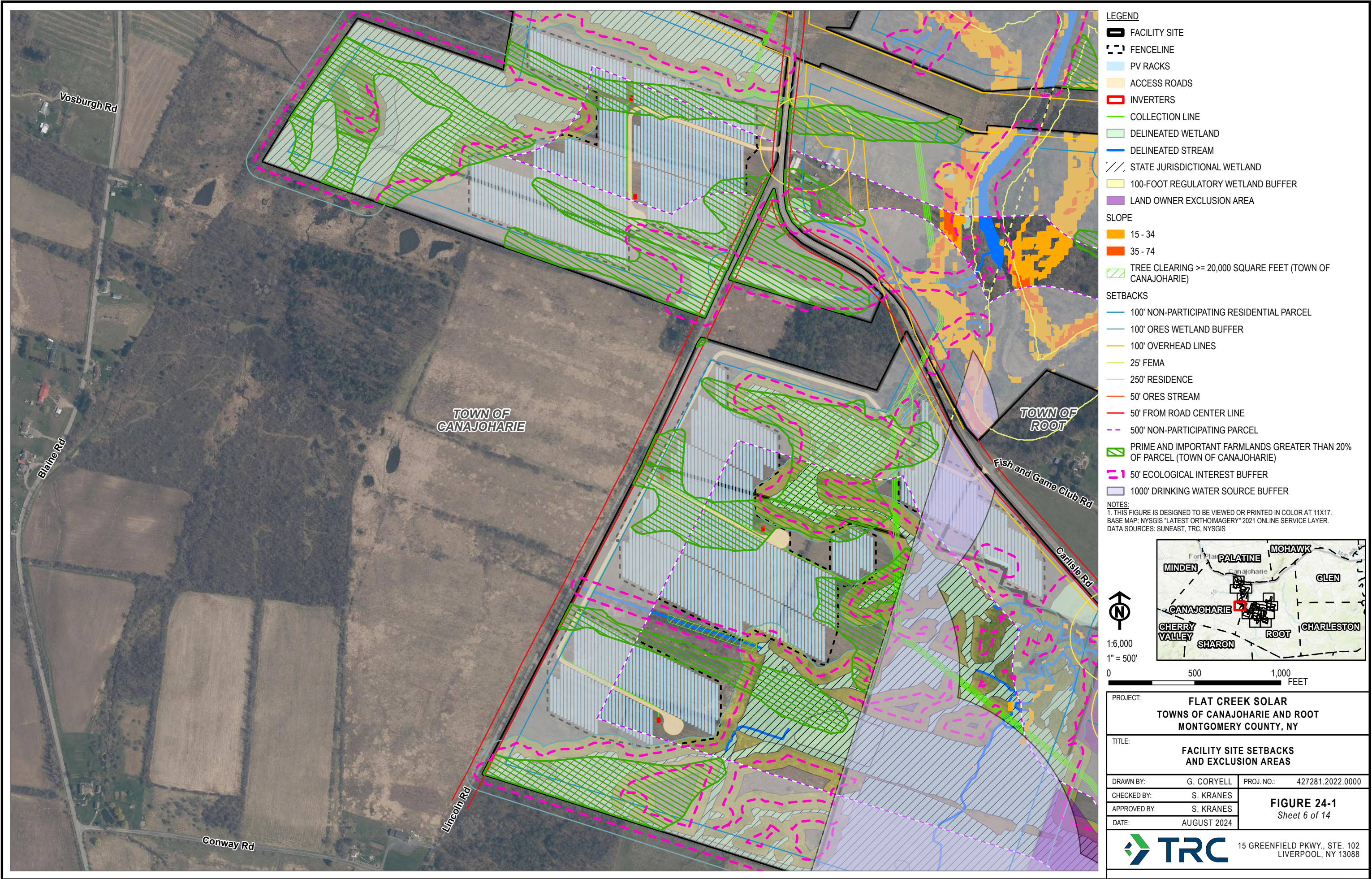
FLAT CREEK SOLAR
TOWNS OF CANAJOHARIE AND ROOT
MONTGOMERY COUNTY, NY

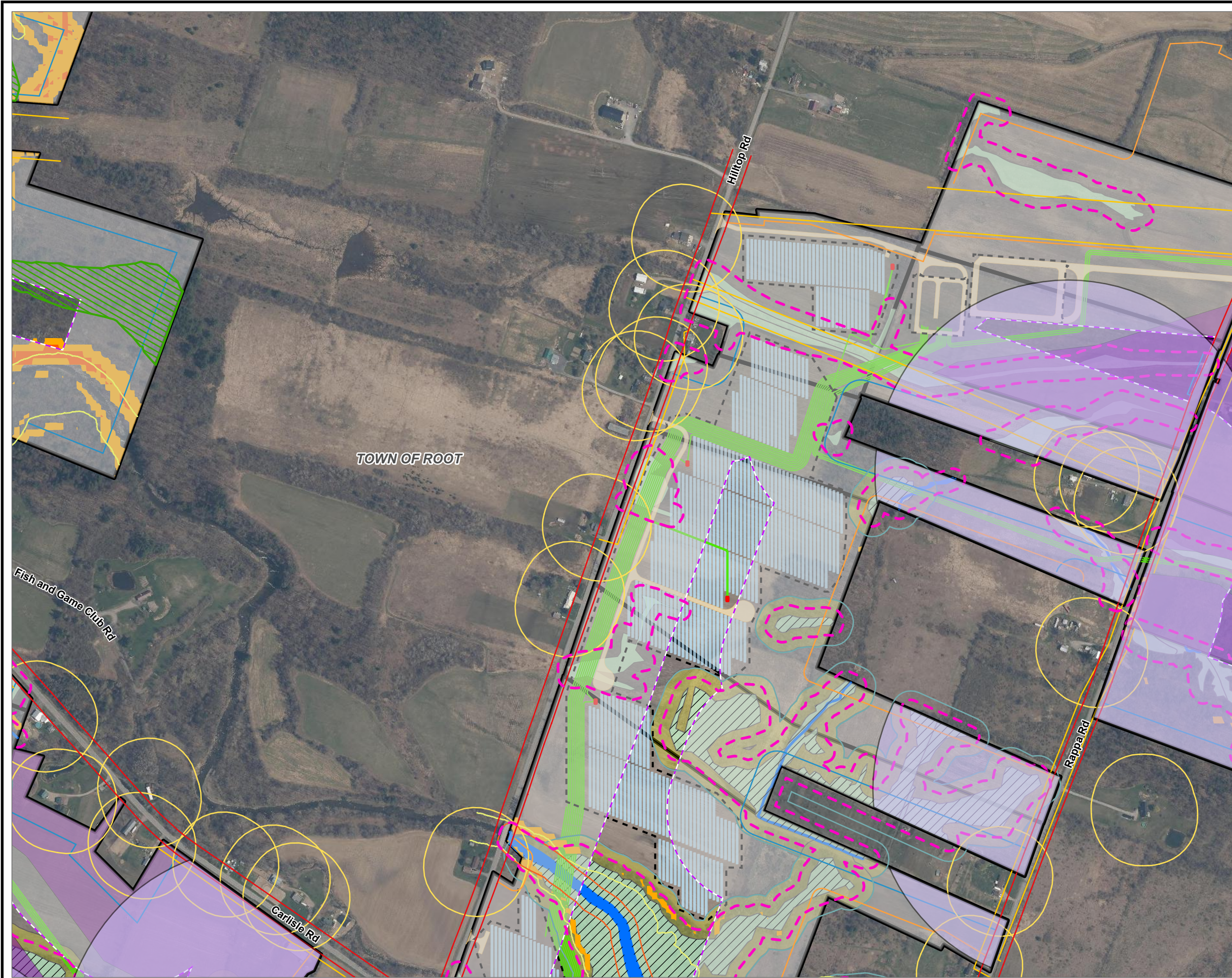
TITLE:

FACILITY SITE SETBACKS
AND EXCLUSION AREAS

DRAWN BY: <p>G. CORYELL</p>	PROJ. NO.: <p>427281.2022.0000</p>
CHECKED BY: <p>S. KRANES</p>	FIGURE 24-1 Sheet 5 of 14
APPROVED BY: <p>S. KRANES</p>	
DATE: <p>AUGUST 2024</p>	

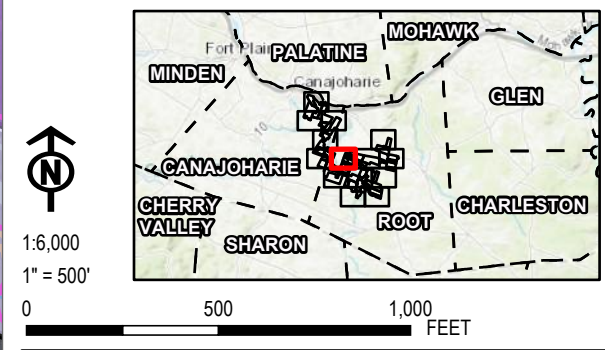
15 GREENFIELD PKWY., STE. 102
LIVERPOOL, NY 13088



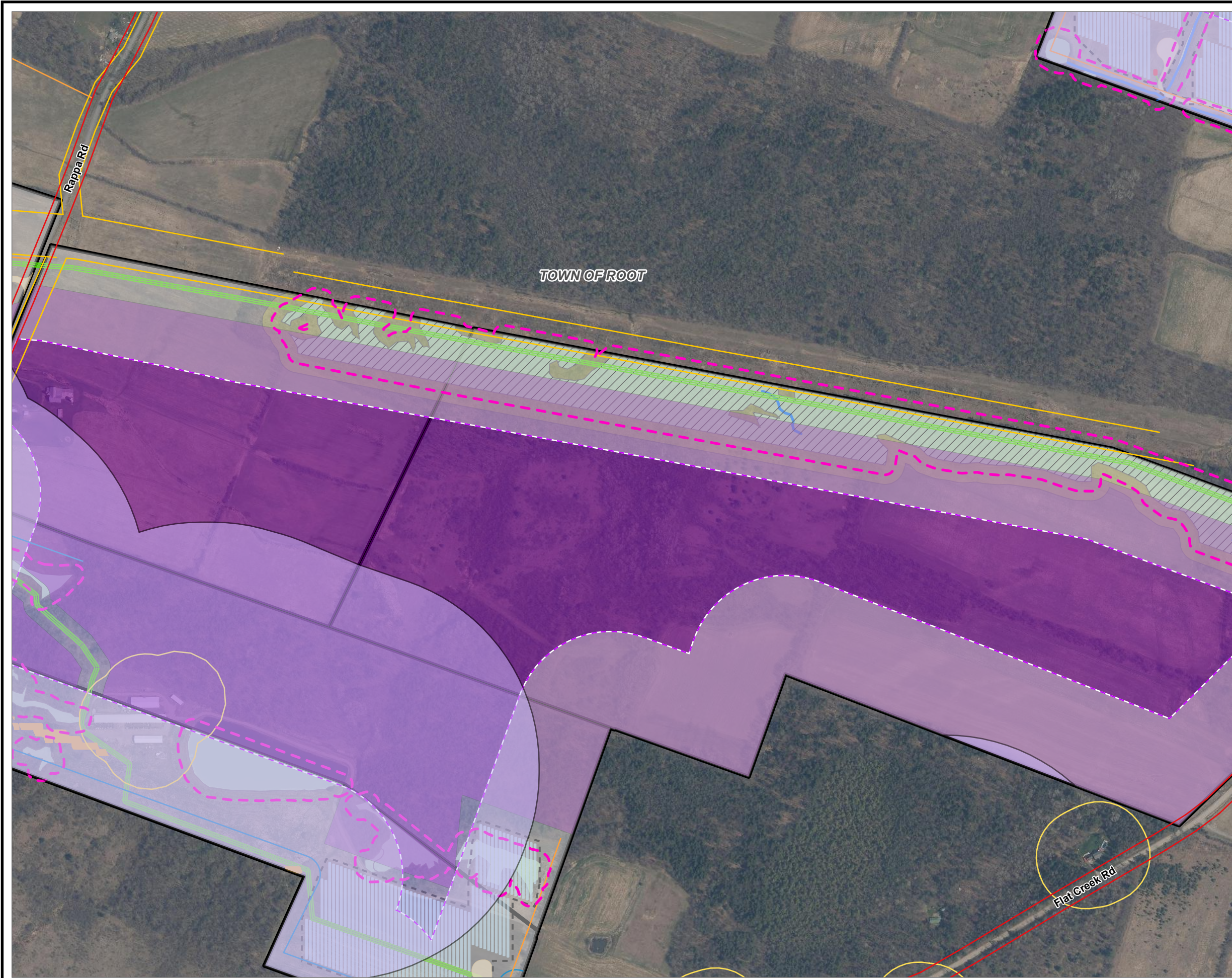


- LEGEND**
- FACILITY SITE
 - FENCELINE
 - PV RACKS
 - ACCESS ROADS
 - INVERTERS
 - COLLECTION LINE
 - DELINEATED WETLAND
 - DELINEATED STREAM
 - STATE JURISDICTIONAL WETLAND
 - 100-FOOT REGULATORY WETLAND BUFFER
 - LAND OWNER EXCLUSION AREA
- SLOPE**
- 15 - 34
 - 35 - 74
- SETBACKS**
- 100' NON-PARTICIPATING RESIDENTIAL PARCEL
 - 100' ORES WETLAND BUFFER
 - 100' OVERHEAD LINES
 - 25' FEMA
 - 250' RESIDENCE
 - 50' NON-PARTICIPATING NON-RESIDENTIAL PARCEL
 - 50' ORES STREAM
 - 50' FROM ROAD CENTER LINE
 - 500' NON-PARTICIPATING PARCEL
 - PRIME AND IMPORTANT FARMLANDS GREATER THAN 20% OF PARCEL (TOWN OF CANAJOHARIE)
 - 50' ECOLOGICAL INTEREST BUFFER
 - 1000' DRINKING WATER SOURCE BUFFER

NOTES:
1. THIS FIGURE IS DESIGNED TO BE VIEWED OR PRINTED IN COLOR AT 11X17.
BASE MAP: NYSGIS "LATEST ORTHOIMAGERY" 2021 ONLINE SERVICE LAYER.
DATA SOURCES: SUNEAST, TRC, NYSGIS



PROJECT:		FLAT CREEK SOLAR TOWNS OF CANAJOHARIE AND ROOT MONTGOMERY COUNTY, NY	
TITLE:		FACILITY SITE SETBACKS AND EXCLUSION AREAS	
DRAWN BY:	G. CORYELL	PROJ. NO.:	427281.2022.0000
CHECKED BY:	S. KRANES	FIGURE 24-1 Sheet 7 of 14	
APPROVED BY:	S. KRANES		
DATE:	AUGUST 2024		



LEGEND

- FACILITY SITE
- FENCELINE
- PV RACKS
- ACCESS ROADS
- INVERTERS
- COLLECTION LINE
- DELINEATED WETLAND
- DELINEATED STREAM
- STATE JURISDICTIONAL WETLAND
- 100-FOOT REGULATORY WETLAND BUFFER
- LAND OWNER EXCLUSION AREA

SLOPE

- 15 - 34

SETBACKS

- 100' NON-PARTICIPATING RESIDENTIAL PARCEL
- 100' OVERHEAD LINES
- 250' RESIDENCE
- 50' NON-PARTICIPATING NON-RESIDENTIAL PARCEL
- 50' FROM ROAD CENTER LINE
- 500' NON-PARTICIPATING PARCEL
- 50' ECOLOGICAL INTEREST BUFFER
- 1000' DRINKING WATER SOURCE BUFFER

NOTES:
1. THIS FIGURE IS DESIGNED TO BE VIEWED OR PRINTED IN COLOR AT 11X17.
BASE MAP: NYSGIS "LATEST ORTHOIMAGERY" 2021 ONLINE SERVICE LAYER.
DATA SOURCES: SUNEAST, TRC, NYSGIS

Scale:
1:6,000
1" = 500'

North Arrow

Map of Montgomery County, NY
MINDEN, PALATINE, MOHAWK, GLEN, CANAJOHARIE, CHERRY VALLEY, SHARON, ROOT, CHARLESTON

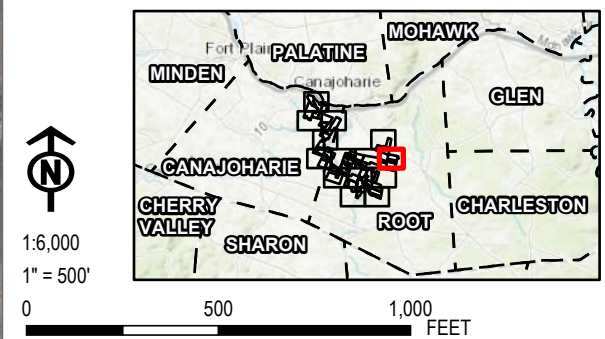
PROJECT: FLAT CREEK SOLAR TOWNS OF CANAJOHARIE AND ROOT MONTGOMERY COUNTY, NY	
TITLE: FACILITY SITE SETBACKS AND EXCLUSION AREAS	
DRAWN BY: G. CORYELL	PROJ. NO.: 427281.2022.0000
CHECKED BY: S. KRANES	FIGURE 24-1 Sheet 8 of 14
APPROVED BY: S. KRANES	
DATE: AUGUST 2024	

TRC 15 GREENFIELD PKWY., STE. 102
LIVERPOOL, NY 13088

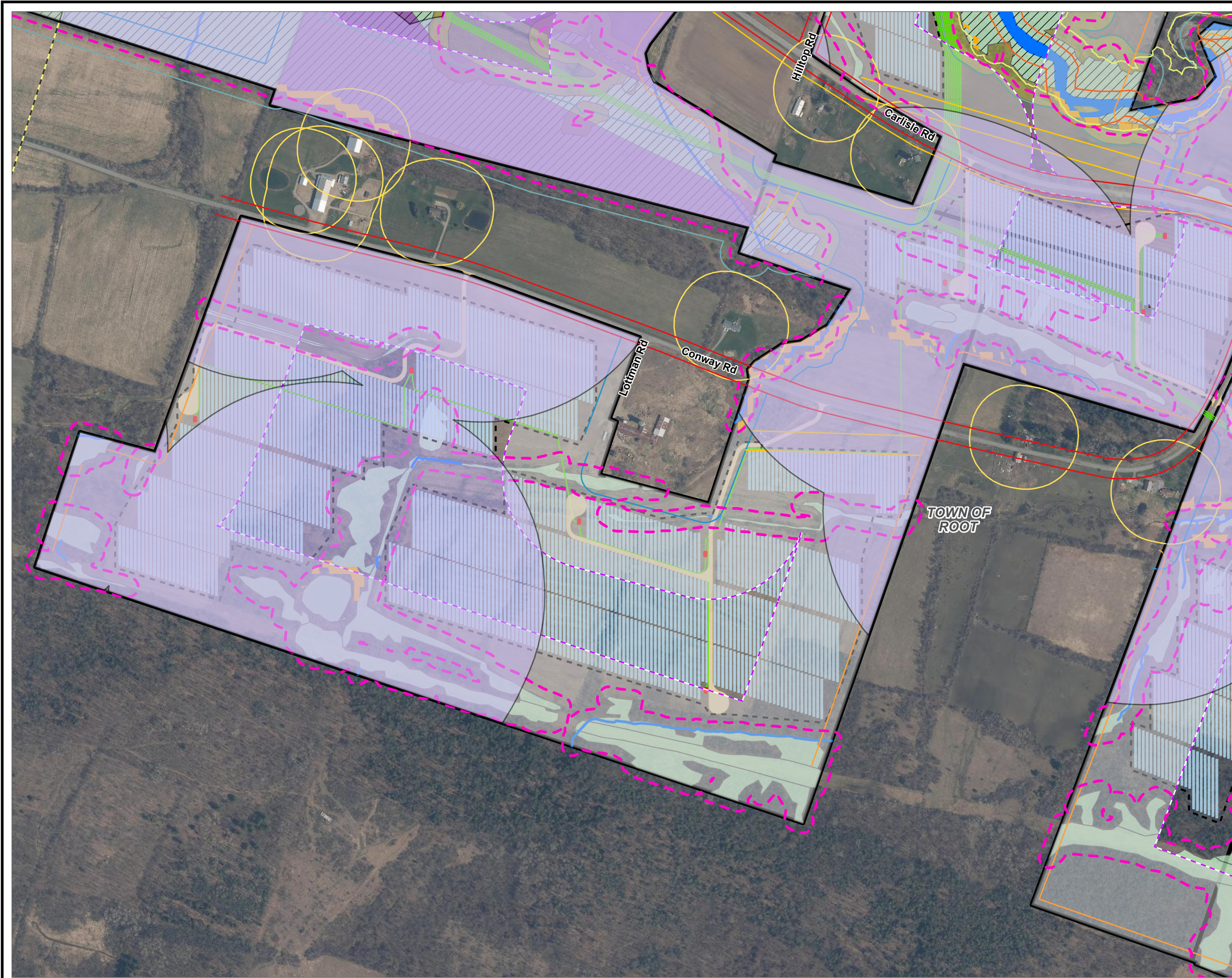


- LEGEND**
- FACILITY SITE
 - FENCELINE
 - PV RACKS
 - ACCESS ROADS
 - INVERTERS
 - COLLECTION LINE
 - DELINEATED WETLAND
 - DELINEATED STREAM
 - STATE JURISDICTIONAL WETLAND
 - 100-FOOT REGULATORY WETLAND BUFFER
 - LAND OWNER EXCLUSION AREA
- SLOPE**
- 15 - 34
- SETBACKS**
- 100' NON-PARTICIPATING RESIDENTIAL PARCEL
 - 100' ORES WETLAND BUFFER
 - 100' OVERHEAD LINES
 - 250' RESIDENCE
 - 50' NON-PARTICIPATING NON-RESIDENTIAL PARCEL
 - 50' FROM ROAD CENTER LINE
 - 500' NON-PARTICIPATING PARCEL
 - 50' ECOLOGICAL INTEREST BUFFER
 - 1000' DRINKING WATER SOURCE BUFFER

NOTES:
1. THIS FIGURE IS DESIGNED TO BE VIEWED OR PRINTED IN COLOR AT 11X17.
BASE MAP: NYSGIS "LATEST ORTHOIMAGERY" 2021 ONLINE SERVICE LAYER.
DATA SOURCES: SUNEAST, TRC, NYSGIS

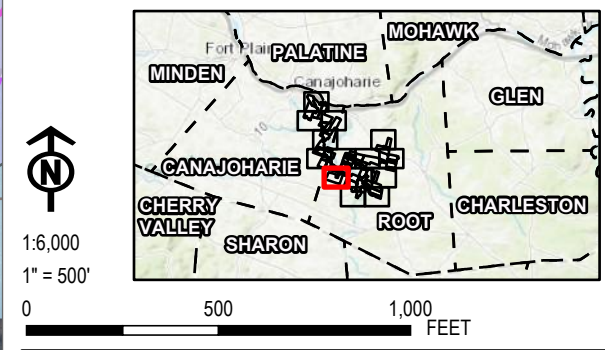


PROJECT:		FLAT CREEK SOLAR TOWNS OF CANAJOHARIE AND ROOT MONTGOMERY COUNTY, NY	
TITLE:		FACILITY SITE SETBACKS AND EXCLUSION AREAS	
DRAWN BY:	G. CORYELL	PROJ. NO.:	427281.2022.0000
CHECKED BY:	S. KRANES	FIGURE 24-1 Sheet 9 of 14	
APPROVED BY:	S. KRANES		
DATE:	AUGUST 2024		

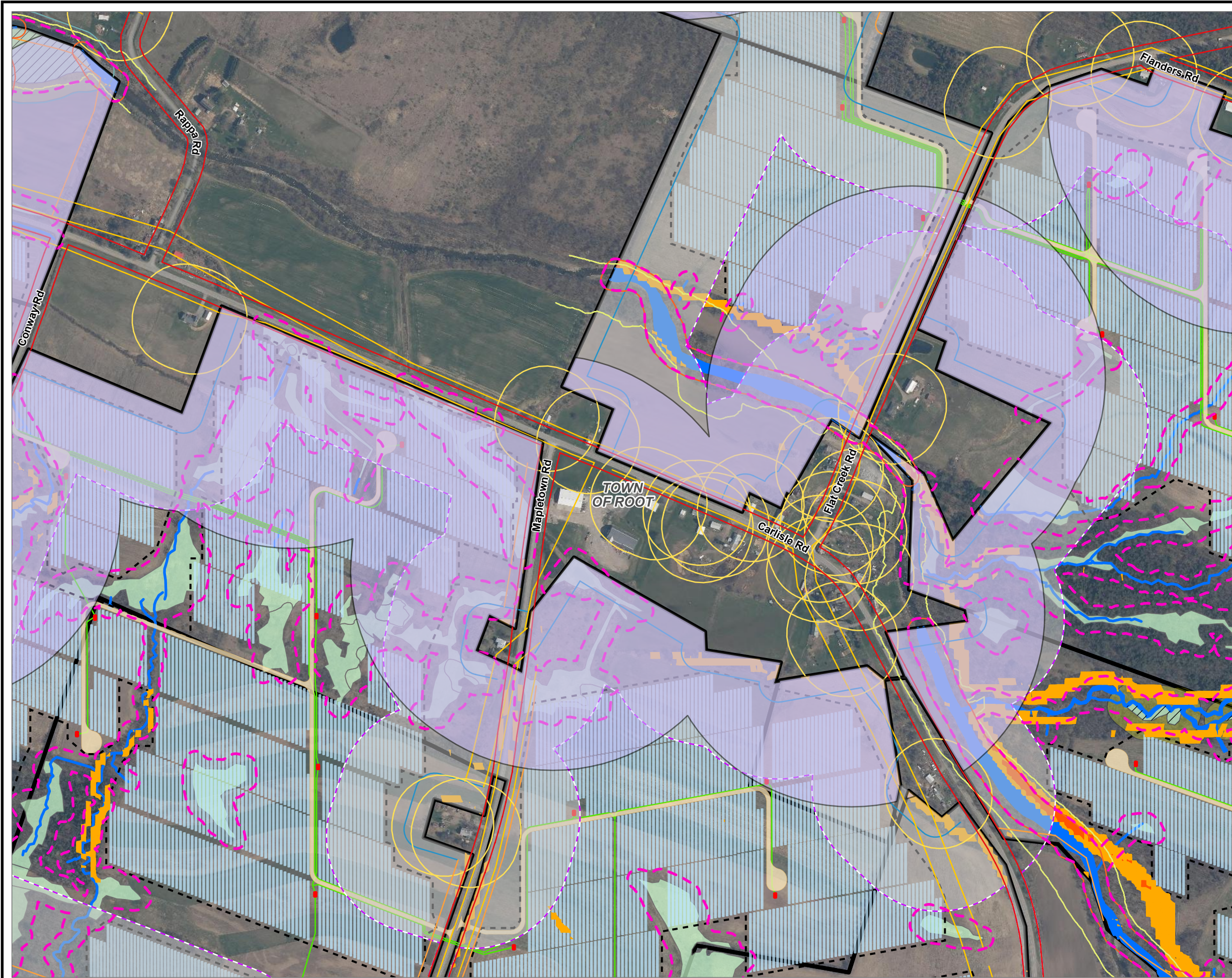


- LEGEND**
- FACILITY SITE
 - FENCELINE
 - PV RACKS
 - ACCESS ROADS
 - INVERTERS
 - COLLECTION LINE
 - DELINEATED WETLAND
 - DELINEATED STREAM
 - STATE JURISDICTIONAL WETLAND
 - 100-FOOT REGULATORY WETLAND BUFFER
 - LAND OWNER EXCLUSION AREA
- SLOPE**
- 15 - 34
- SETBACKS**
- 100' NON-PARTICIPATING RESIDENTIAL PARCEL
 - 100' ORES WETLAND BUFFER
 - 100' OVERHEAD LINES
 - 25' FEMA
 - 250' RESIDENCE
 - 50' NON-PARTICIPATING NON-RESIDENTIAL PARCEL
 - 50' ORES STREAM
 - 50' FROM ROAD CENTER LINE
 - 500' NON-PARTICIPATING PARCEL
 - 5' ECOLOGICAL INTEREST BUFFER
 - 1000' DRINKING WATER SOURCE BUFFER

NOTES:
1. THIS FIGURE IS DESIGNED TO BE VIEWED OR PRINTED IN COLOR AT 11X17.
BASE MAP: NYSGIS "LATEST ORTHOIMAGERY" 2021 ONLINE SERVICE LAYER.
DATA SOURCES: SUNEAST, TRC, NYSGIS

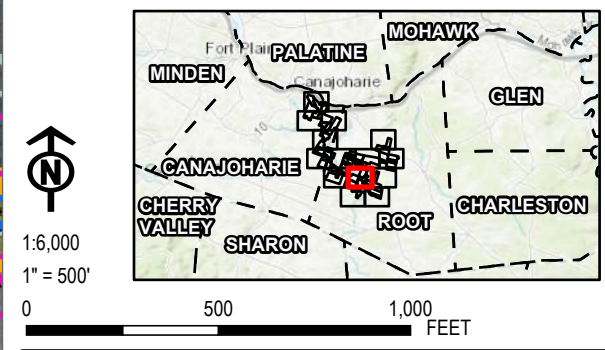


PROJECT:		FLAT CREEK SOLAR TOWNS OF CANAJOHARIE AND ROOT MONTGOMERY COUNTY, NY	
TITLE:		FACILITY SITE SETBACKS AND EXCLUSION AREAS	
DRAWN BY:	G. CORYELL	PROJ. NO.:	427281.2022.0000
CHECKED BY:	S. KRANES	FIGURE 24-1 Sheet 10 of 14	
APPROVED BY:	S. KRANES		
DATE:	AUGUST 2024		

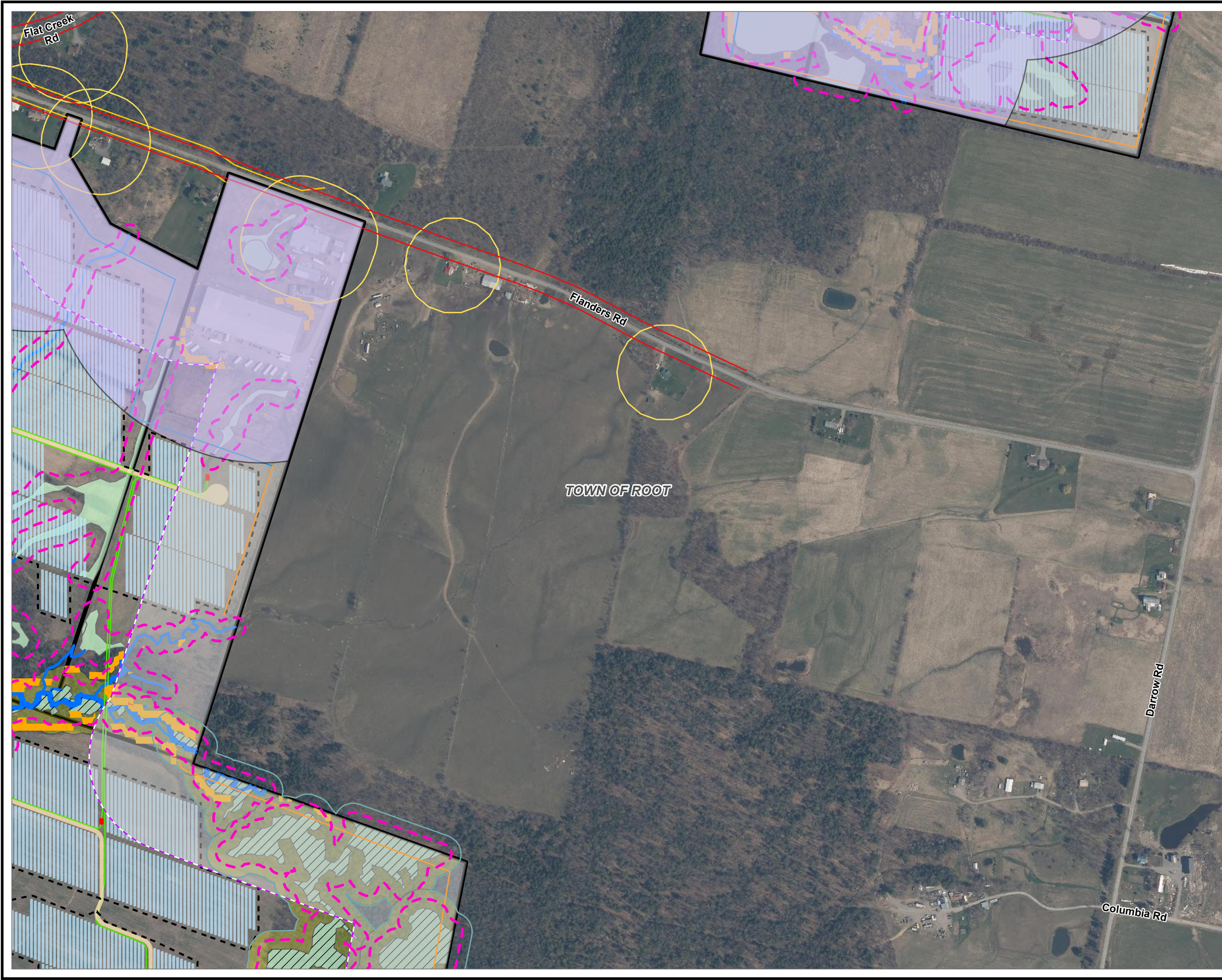


- LEGEND**
- FACILITY SITE
 - FENCELINE
 - PV RACKS
 - ACCESS ROADS
 - INVERTERS
 - COLLECTION LINE
 - DELINEATED WETLAND
 - DELINEATED STREAM
 - STATE JURISDICTIONAL WETLAND
 - 100-FOOT REGULATORY WETLAND BUFFER
- SLOPE**
- 15 - 34
 - 35 - 74
- SETBACKS**
- 100' NON-PARTICIPATING RESIDENTIAL PARCEL
 - 100' ORES WETLAND BUFFER
 - 100' OVERHEAD LINES
 - 25' FEMA
 - 250' RESIDENCE
 - 50' NON-PARTICIPATING NON-RESIDENTIAL PARCEL
 - 50' ORES STREAM
 - 50' FROM ROAD CENTER LINE
 - 500' NON-PARTICIPATING PARCEL
 - 50' ECOLOGICAL INTEREST BUFFER
 - 1000' DRINKING WATER SOURCE BUFFER

NOTES:
1. THIS FIGURE IS DESIGNED TO BE VIEWED OR PRINTED IN COLOR AT 11X17.
BASE MAP: NYSGIS "LATEST ORTHOIMAGERY" 2021 ONLINE SERVICE LAYER.
DATA SOURCES: SUNEAST, TRC, NYSGIS

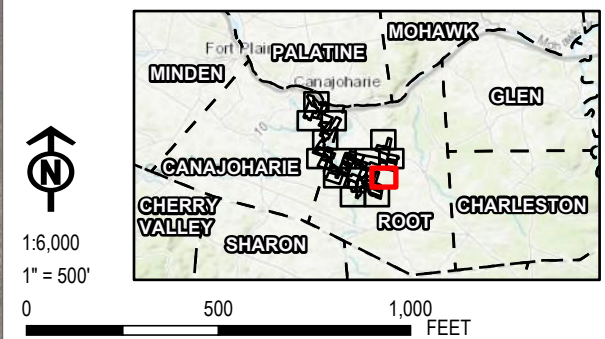


PROJECT:		FLAT CREEK SOLAR TOWNS OF CANAJOHARIE AND ROOT MONTGOMERY COUNTY, NY	
TITLE:		FACILITY SITE SETBACKS AND EXCLUSION AREAS	
DRAWN BY:	G. CORYELL	PROJ. NO.:	427281.2022.0000
CHECKED BY:	S. KRANES	FIGURE 24-1 Sheet 11 of 14	
APPROVED BY:	S. KRANES		
DATE:	AUGUST 2024		

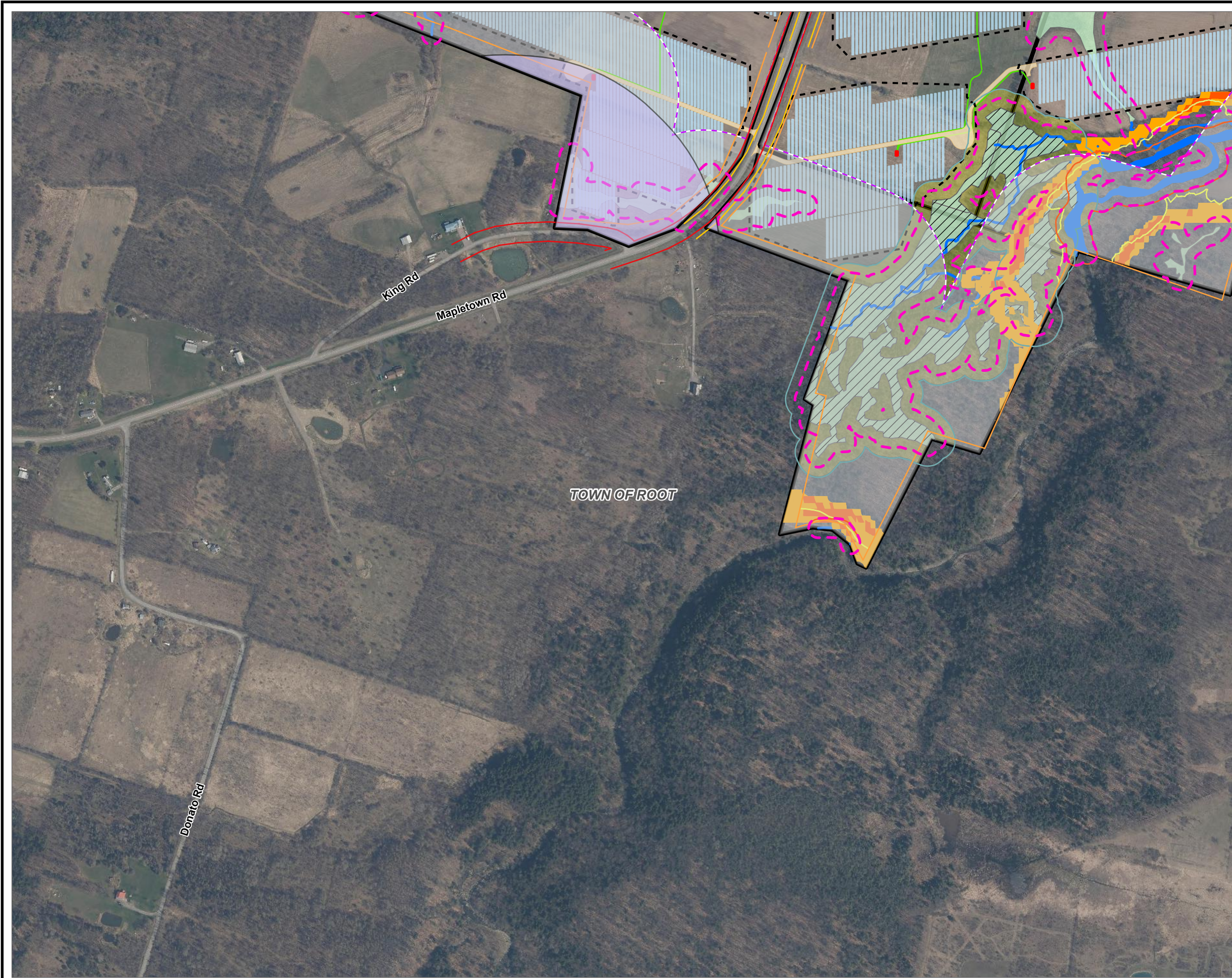


- LEGEND**
- FACILITY SITE
 - FENCELINE
 - PV RACKS
 - ACCESS ROADS
 - INVERTERS
 - COLLECTION LINE
 - DELINEATED WETLAND
 - DELINEATED STREAM
 - STATE JURISDICTIONAL WETLAND
 - 100-FOOT REGULATORY WETLAND BUFFER
- SLOPE**
- 15 - 34
 - 35 - 74
- SETBACKS**
- 100' NON-PARTICIPATING RESIDENTIAL PARCEL
 - 100' ORES WETLAND BUFFER
 - 100' OVERHEAD LINES
 - 250' RESIDENCE
 - 50' NON-PARTICIPATING NON-RESIDENTIAL PARCEL
 - 50' FROM ROAD CENTER LINE
 - 500' NON-PARTICIPATING PARCEL
 - 50' ECOLOGICAL INTEREST BUFFER
 - 1000' DRINKING WATER SOURCE BUFFER

NOTES:
1. THIS FIGURE IS DESIGNED TO BE VIEWED OR PRINTED IN COLOR AT 11X17.
BASE MAP: NYSGIS "LATEST ORTHOIMAGERY" 2021 ONLINE SERVICE LAYER.
DATA SOURCES: SUNEAST, TRC, NYSGIS

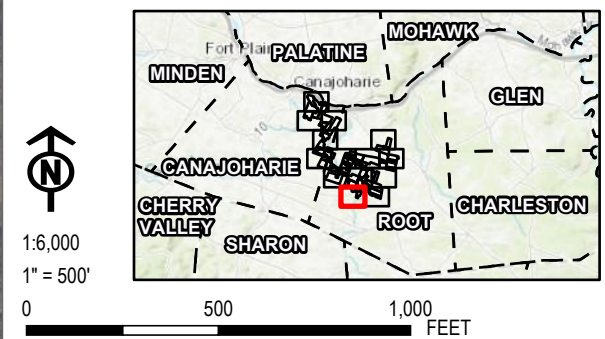


PROJECT:		FLAT CREEK SOLAR TOWNS OF CANAJOHARIE AND ROOT MONTGOMERY COUNTY, NY	
TITLE:		FACILITY SITE SETBACKS AND EXCLUSION AREAS	
DRAWN BY:	G. CORYELL	PROJ. NO.:	427281.2022.0000
CHECKED BY:	S. KRANES	FIGURE 24-1 Sheet 12 of 14	
APPROVED BY:	S. KRANES		
DATE:	AUGUST 2024		

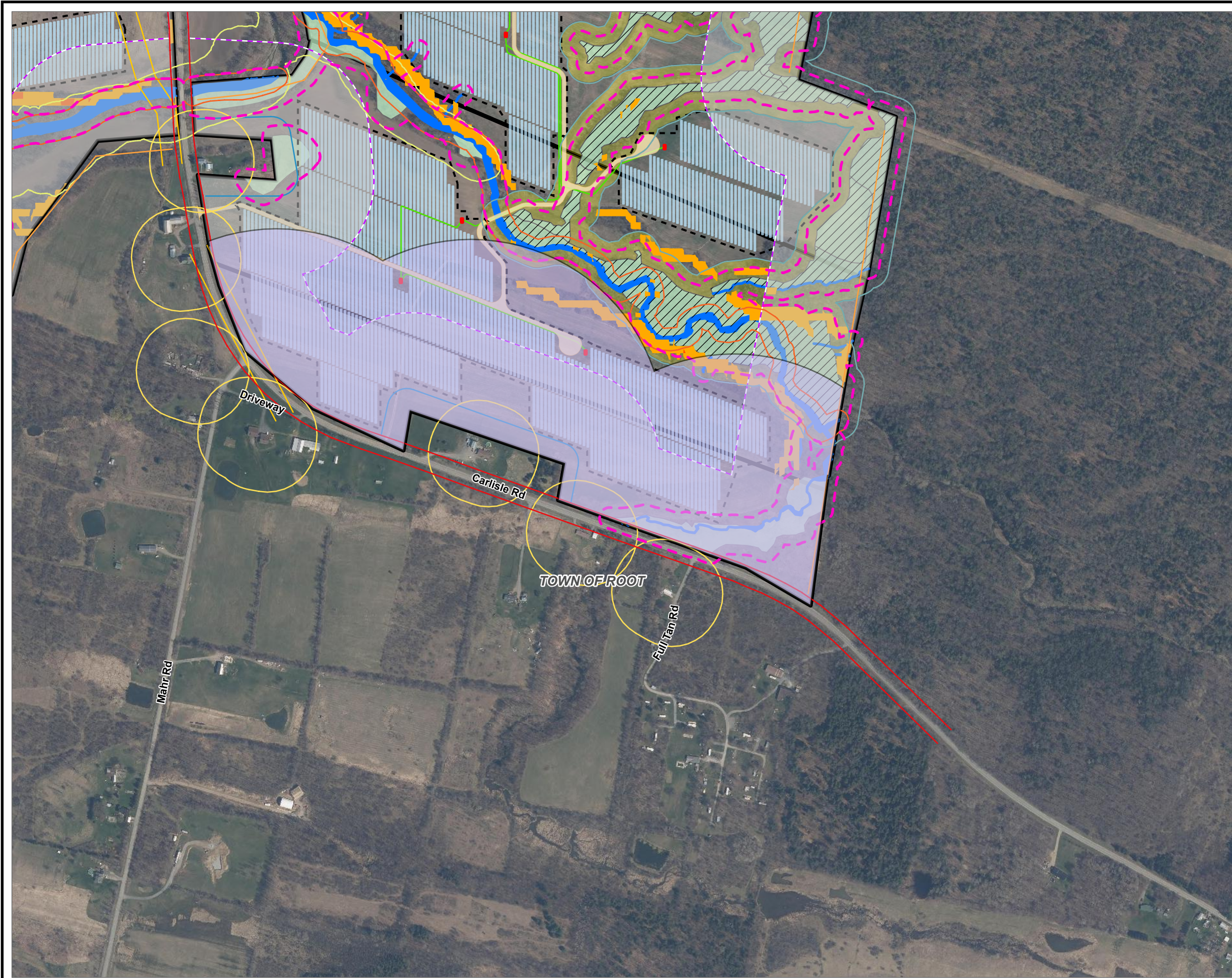


- LEGEND**
- FACILITY SITE
 - FENCELINE
 - PV RACKS
 - ACCESS ROADS
 - INVERTERS
 - COLLECTION LINE
 - DELINEATED WETLAND
 - DELINEATED STREAM
 - STATE JURISDICTIONAL WETLAND
 - 100-FOOT REGULATORY WETLAND BUFFER
- SLOPE**
- 15 - 34
 - 35 - 74
- SETBACKS**
- 100' ORES WETLAND BUFFER
 - 100' OVERHEAD LINES
 - 25' FEMA
 - 50' NON-PARTICIPATING NON-RESIDENTIAL PARCEL
 - 50' ORES STREAM
 - 50' FROM ROAD CENTER LINE
 - 500' NON-PARTICIPATING PARCEL
 - 50' ECOLOGICAL INTEREST BUFFER
 - 1000' DRINKING WATER SOURCE BUFFER

NOTES:
1. THIS FIGURE IS DESIGNED TO BE VIEWED OR PRINTED IN COLOR AT 11X17.
BASE MAP: NYSGIS "LATEST ORTHOIMAGERY" 2021 ONLINE SERVICE LAYER.
DATA SOURCES: SUNEAST, TRC, NYSGIS



PROJECT:		FLAT CREEK SOLAR TOWNS OF CANAJOHARIE AND ROOT MONTGOMERY COUNTY, NY	
TITLE:		FACILITY SITE SETBACKS AND EXCLUSION AREAS	
DRAWN BY:	G. CORYELL	PROJ. NO.:	427281.2022.0000
CHECKED BY:	S. KRANES	FIGURE 24-1 Sheet 13 of 14	
APPROVED BY:	S. KRANES		
DATE:	AUGUST 2024		



LEGEND

- FACILITY SITE
- FENCELINE
- PV RACKS
- ACCESS ROADS
- INVERTERS
- COLLECTION LINE
- DELINEATED WETLAND
- DELINEATED STREAM
- STATE JURISDICTIONAL WETLAND
- 100-FOOT REGULATORY WETLAND BUFFER

SLOPE

- 15 - 34
- 35 - 74

SETBACKS

- 100' NON-PARTICIPATING RESIDENTIAL PARCEL
- 100' ORES WETLAND BUFFER
- 100' OVERHEAD LINES
- 25' FEMA
- 250' RESIDENCE
- 50' NON-PARTICIPATING NON-RESIDENTIAL PARCEL
- 50' ORES STREAM
- 50' FROM ROAD CENTER LINE
- 500' NON-PARTICIPATING PARCEL
- 50' ECOLOGICAL INTEREST BUFFER
- 1000' DRINKING WATER SOURCE BUFFER

NOTES:
1. THIS FIGURE IS DESIGNED TO BE VIEWED OR PRINTED IN COLOR AT 11X17.
BASE MAP: NYSGIS "LATEST ORTHOIMAGERY" 2021 ONLINE SERVICE LAYER.
DATA SOURCES: SUNEAST, TRC, NYSGIS

Scale:
1:6,000
1" = 500'

Map:
0 500 1,000 FEET

PROJECT:
FLAT CREEK SOLAR
TOWNS OF CANAJOHARIE AND ROOT
MONTGOMERY COUNTY, NY

TITLE:
FACILITY SITE SETBACKS
AND EXCLUSION AREAS

DRAWN BY: G. CORYELL **PROJ. NO.:** 427281.2022.0000

CHECKED BY: S. KRANES

APPROVED BY: S. KRANES

DATE: AUGUST 2024

FIGURE 24-1
Sheet 14 of 14

TRC 15 GREENFIELD PKWY., STE. 102
LIVERPOOL, NY 13088