

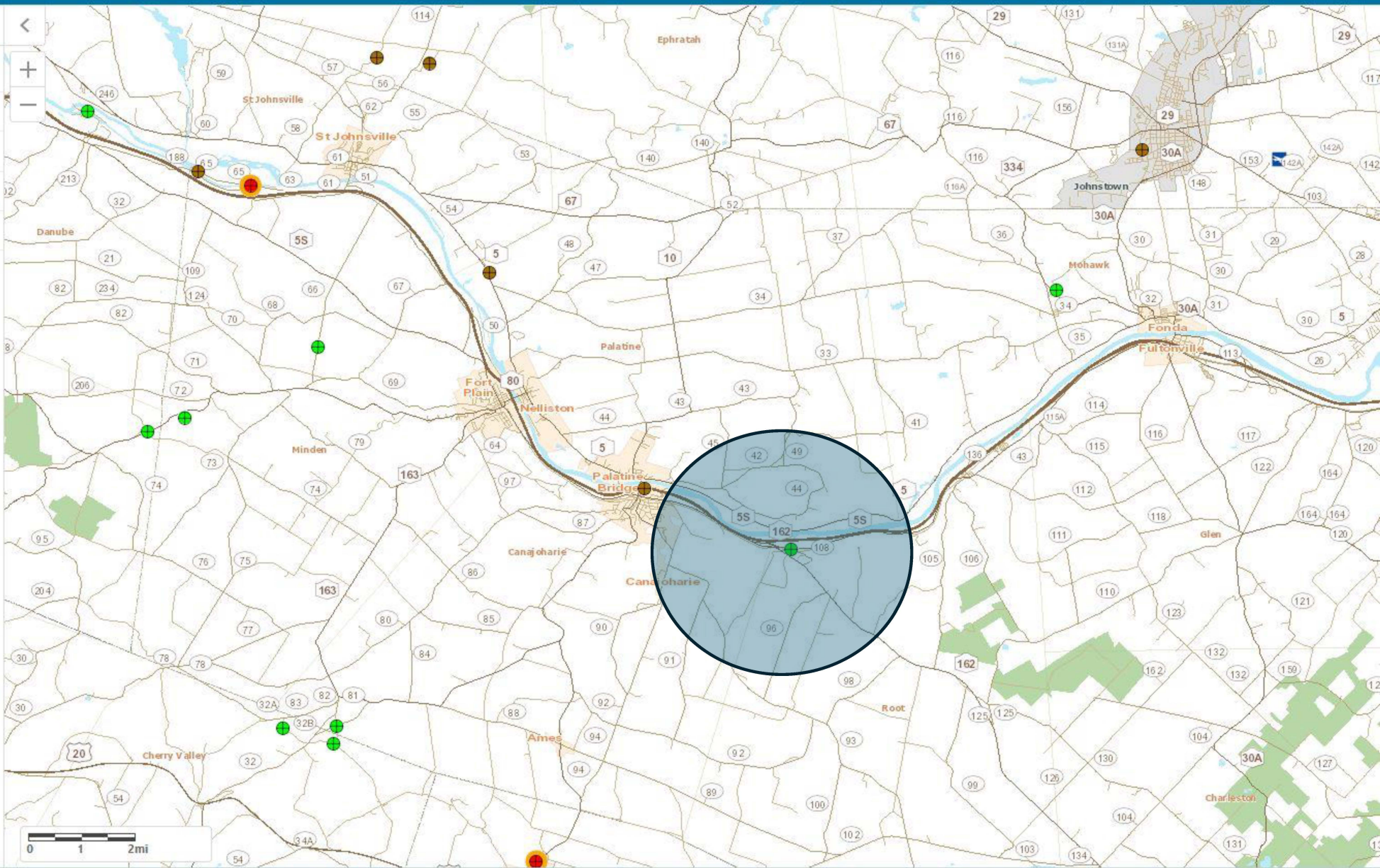
Posted Bridges

Layers



- State Owned R-Posted Waivered Bridges*
- State Owned R-Posted Bridges, Non-Waivered
- Non-State Owned R-Posted Bridges
- Load Posted Bridges
- Other Posting Including Closed

Highlighted 5 mile radius around project site shows R-posted bridges and culverts in the vicinity.



NYS DOT Large Culverts

Part of [NYS DOT Structures](#)

Private Member
Private Organization

Summary

NYS DOT Bridge Inventory Terms of Use: You are welcome to freely download and use this NYS Department of Transportation web service and its content as long as you abide by these Terms of Use, which constitute a contract between you and the State.

[View Full Details](#)

[Download](#)

Details

Dataset
Feature Layer

April 26, 2023
Info Updated

April 26, 2023
Data Updated

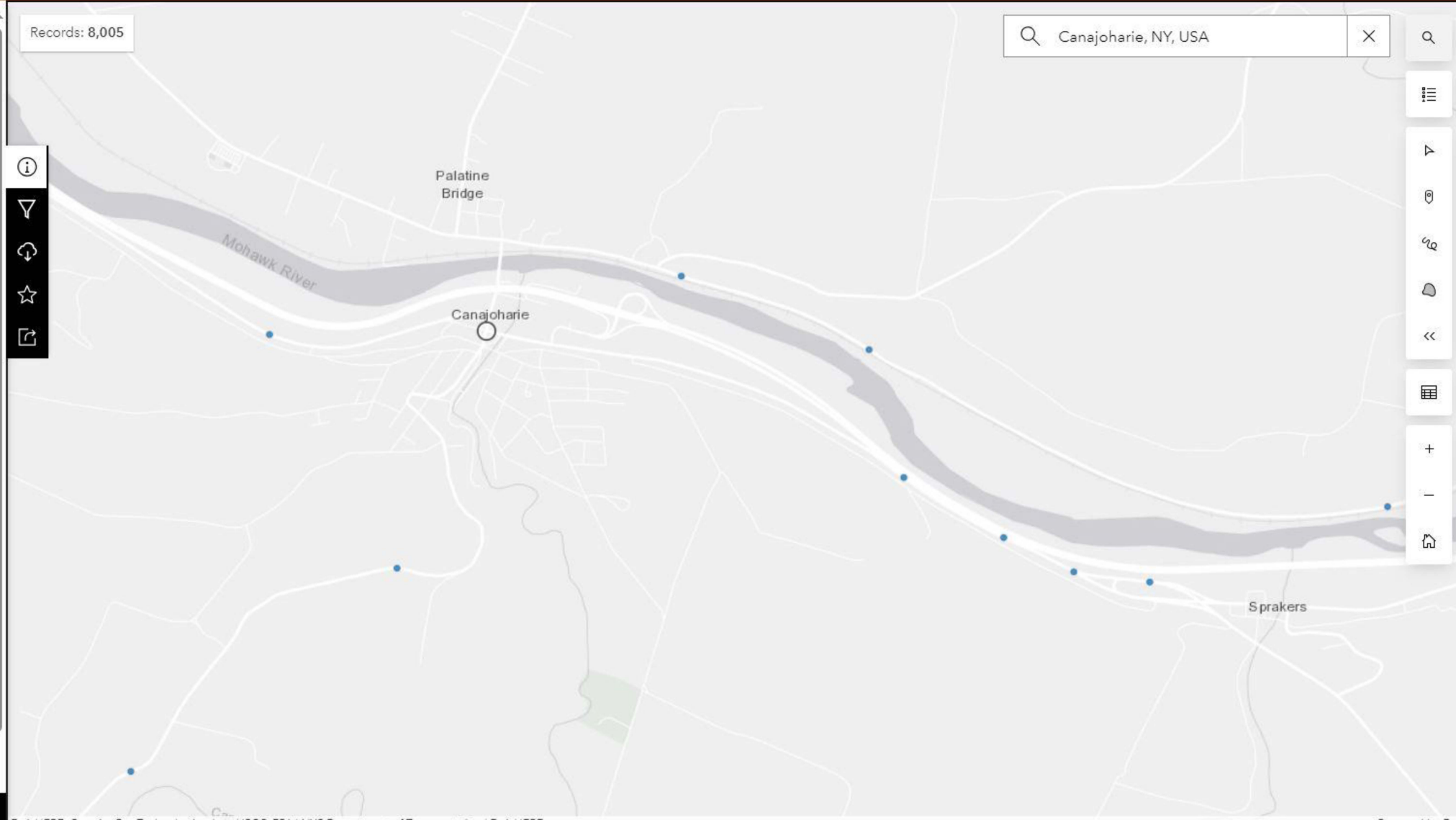
March 22, 2023
Published Date

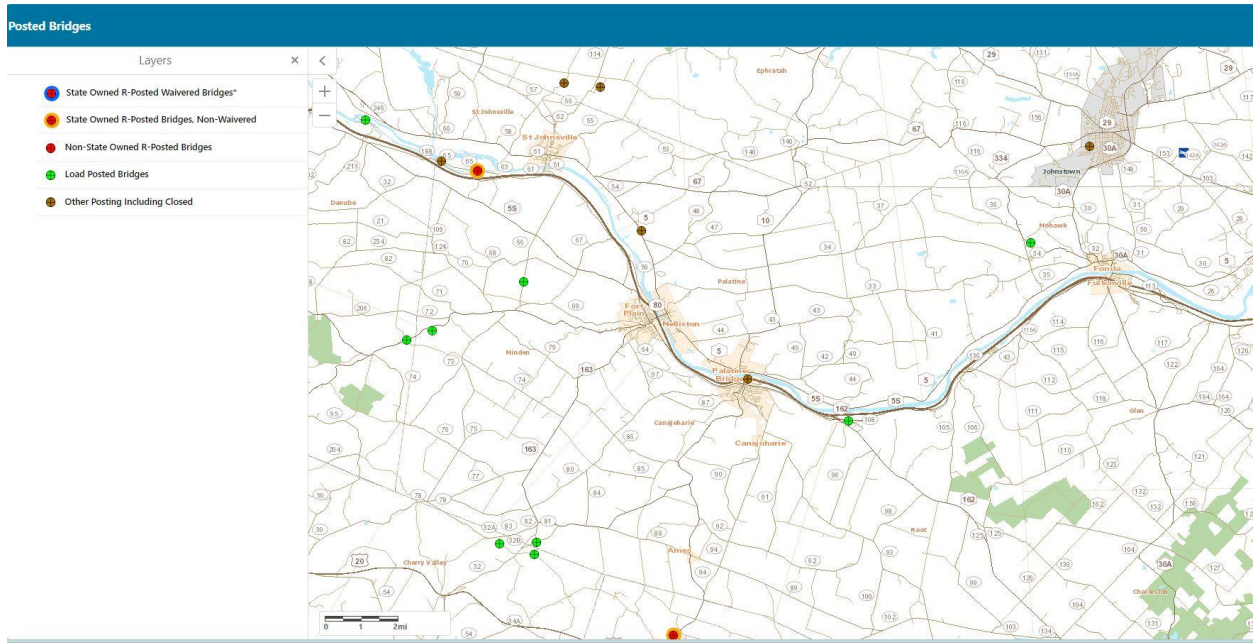
Records: 8,005
[View data table](#)

Public
Anyone can see this content

I want to use this

Records: 8,005





R-posted bridges within 5 miles of project stie.