

LEGEND

- FACILITY SITE
- PROPOSED COLLECTION LINE
- PROPOSED HDD BORING LINE
- PROPOSED FENCE LINE
- PROPOSED ACCESS ROAD
- PROPOSED PV ARRAY
- PROPOSED INVERTER
- TREE CLEARING
- DELINEATED STREAM
- DELINEATED WETLAND
 - PEM
 - PFO
 - PSS
 - PUB
 - STATE JURISDICTIONAL WETLAND
 - 100-FOOT REGULATORY WETLAND BUFFER
 - DELINEATED WETLAND BOUNDARY
 - WETLAND OPEN END
 - VILLAGE BOUNDARY
 - MUNICIPAL BOUNDARY

NOTES:
1. THIS FIGURE IS DESIGNED TO BE VIEWED OR PRINTED IN COLOR AT 11X17.
BASE MAP: NYSGIS "LATEST ORTHOIMAGERY" 2021 ONLINE SERVICE LAYER.
DATA SOURCES: SUNEAST, TRC, NYSGIS

Scale:
1:6,000
1" = 500'
0 500 1,000 FEET

PROJECT: FLAT CREEK SOLAR
TOWNS OF CANAJOHARIE AND ROOT
MONTGOMERY COUNTY, NY

TITLE: PROPOSED IMPACTS TO STATE-REGULATED WETLANDS & ADJACENT AREAS WITHIN THE FACILITY SITE

DRAWN BY: G. CORYELL **PROJ. NO.:** 427281.2022.0000

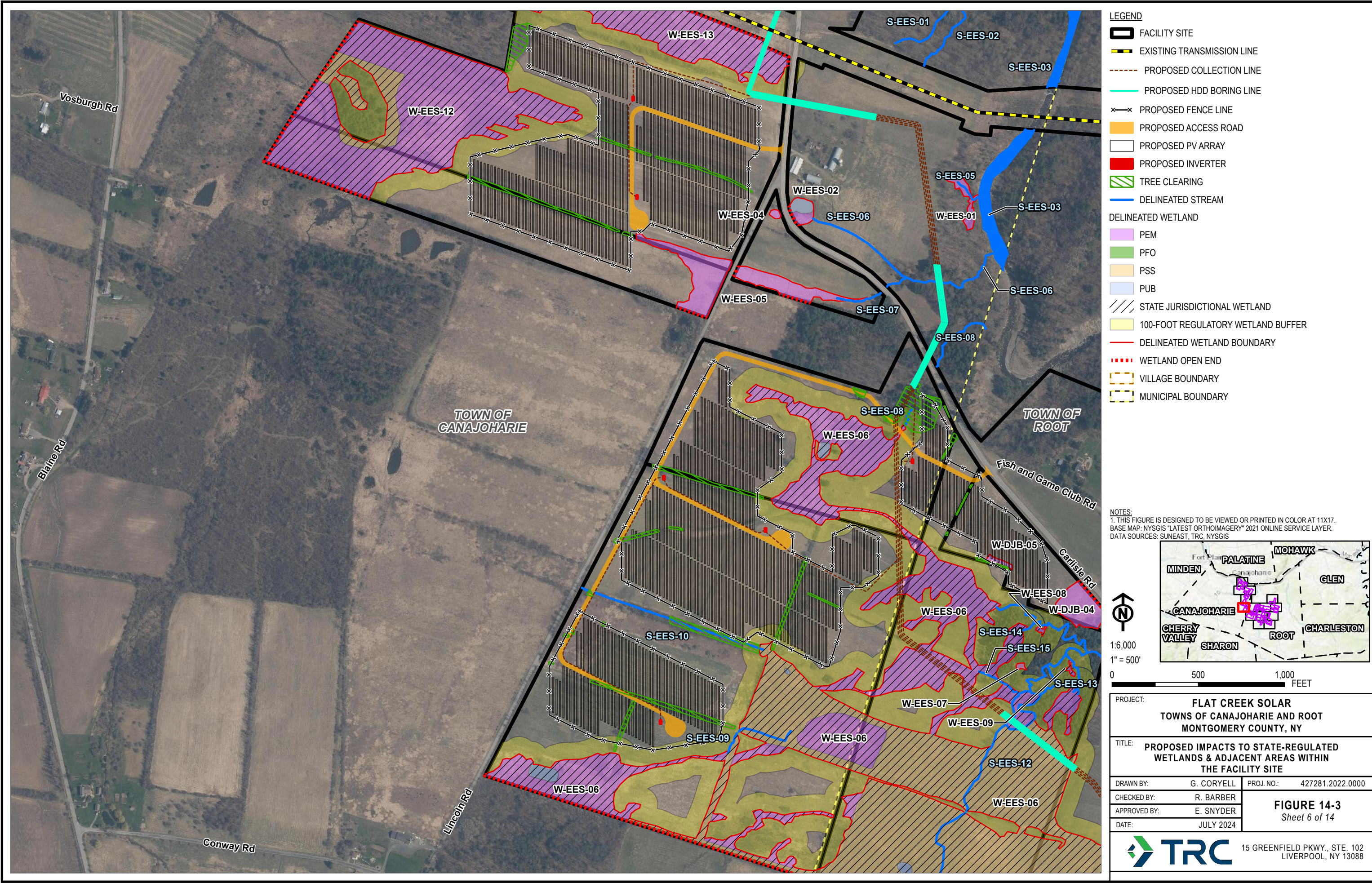
CHECKED BY: R. BARBER

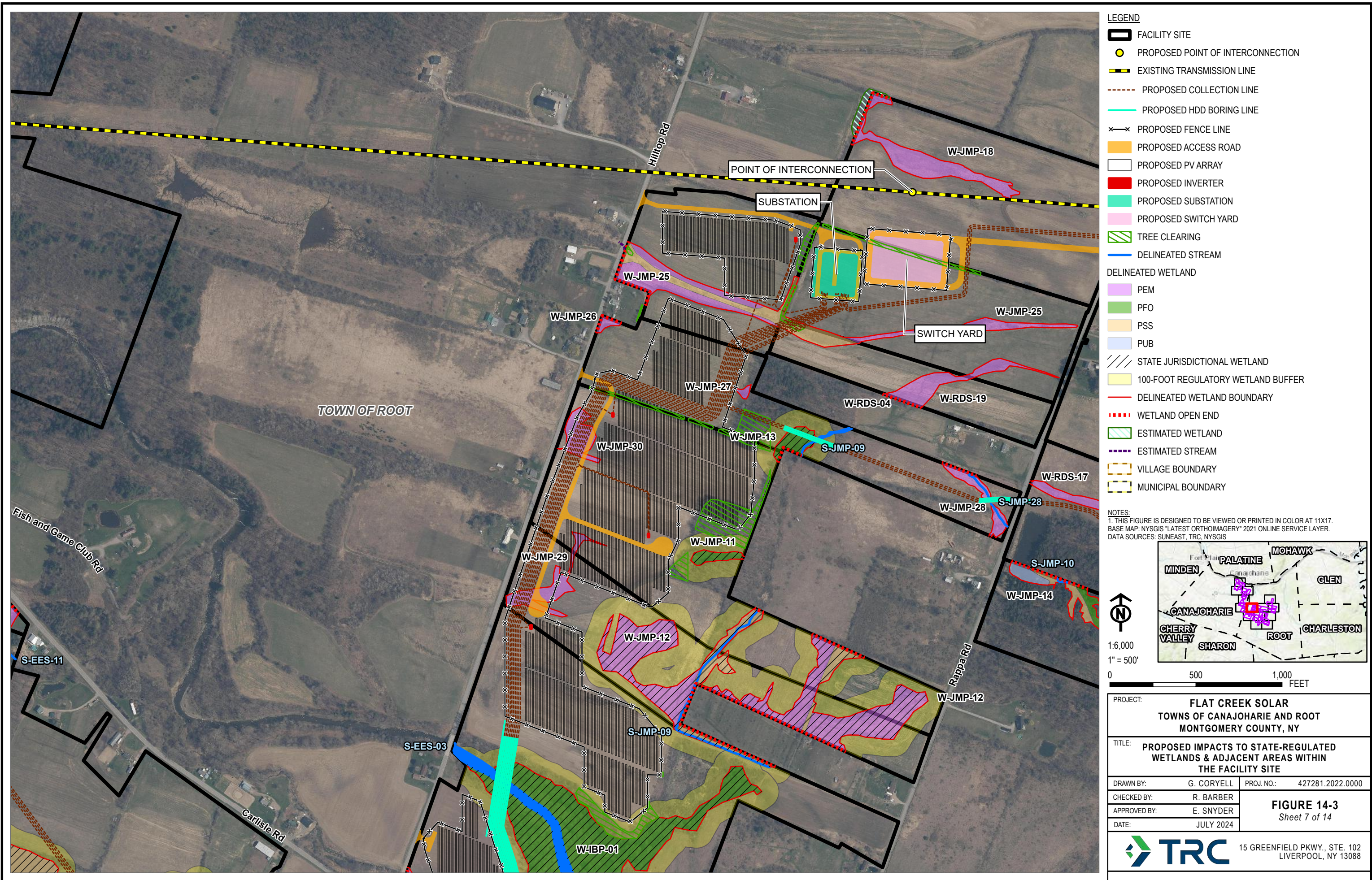
APPROVED BY: E. SNYDER

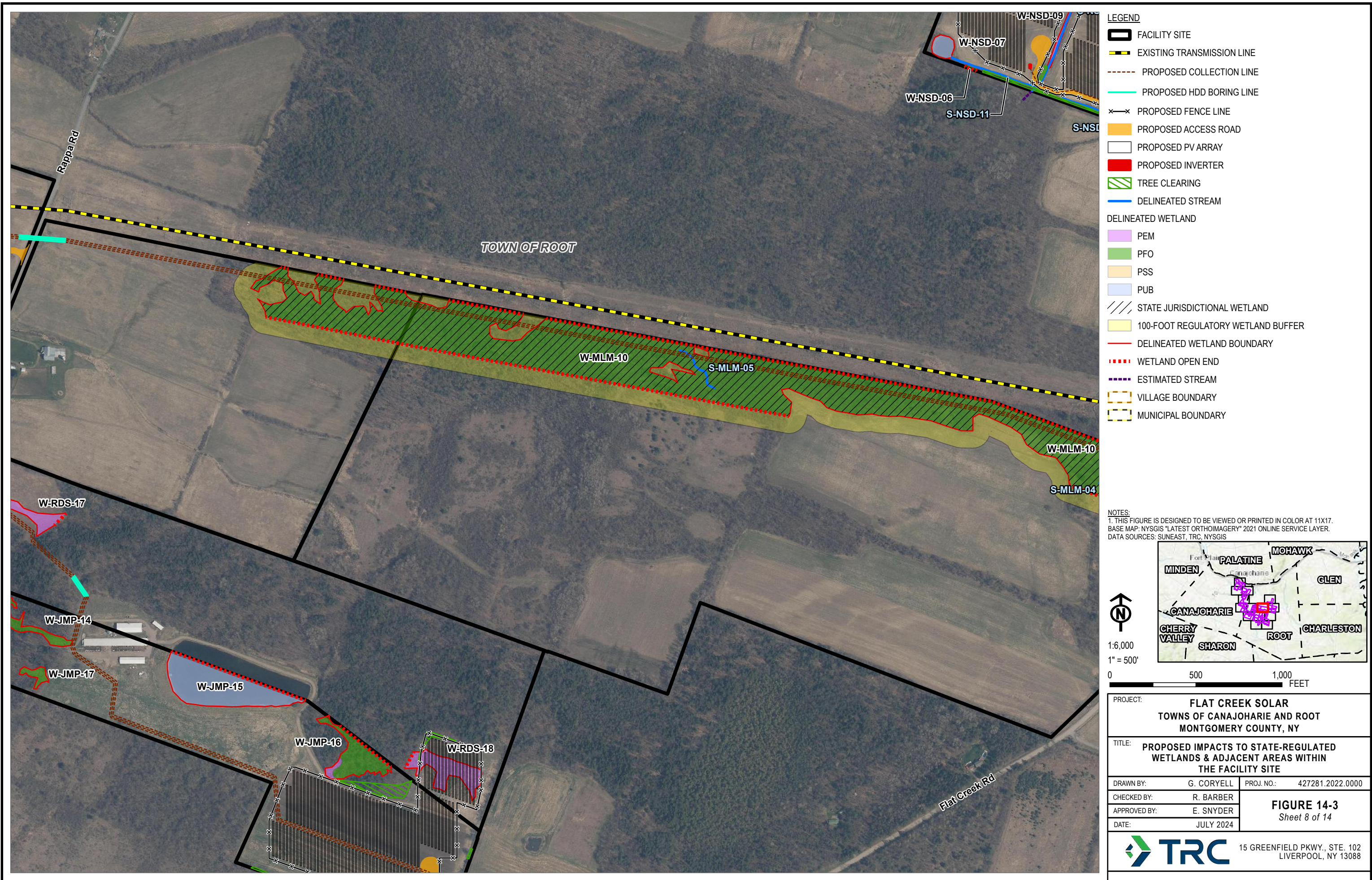
DATE: JULY 2024

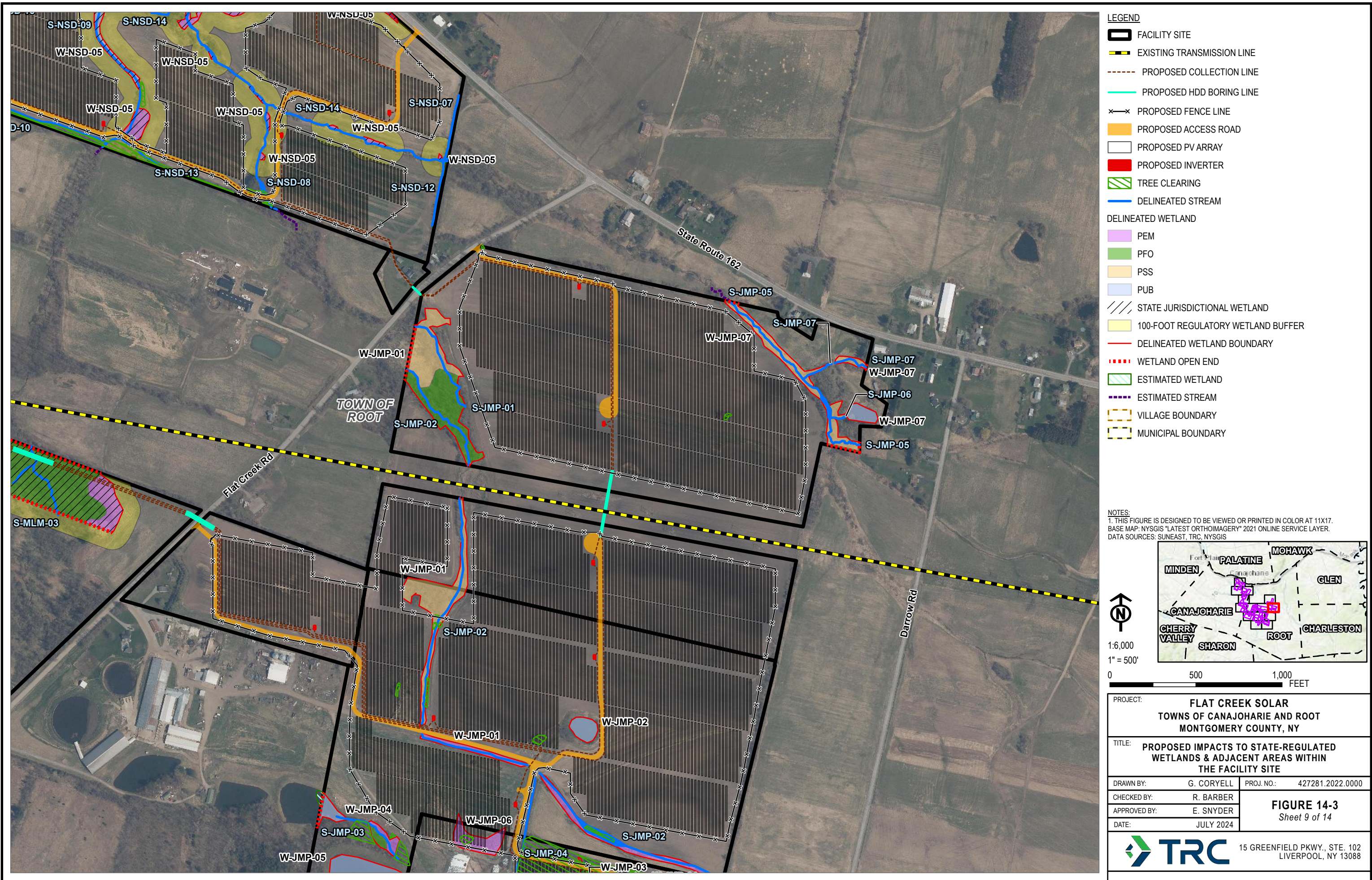
FIGURE 14-3
Sheet 5 of 14

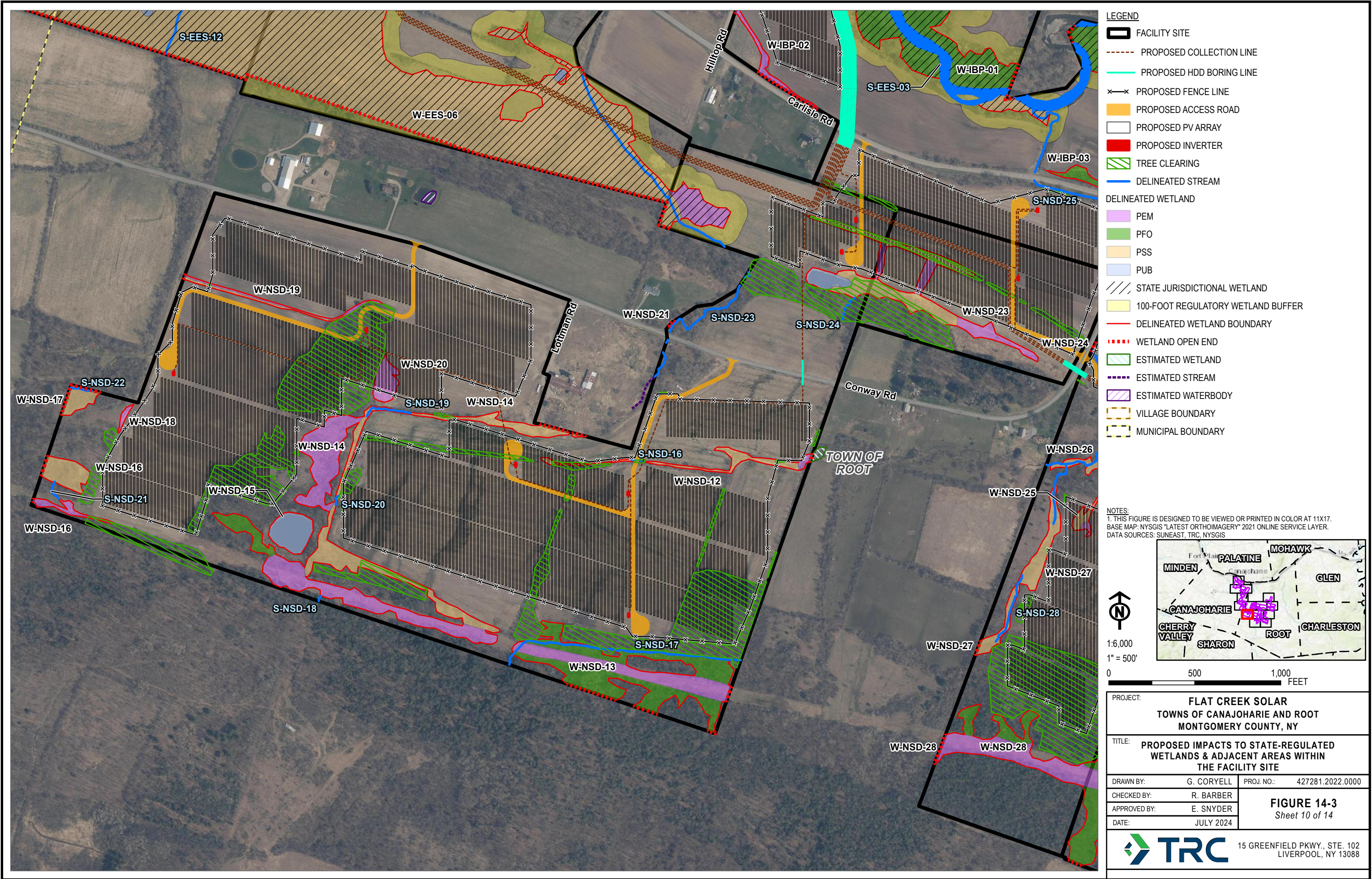
TRC 15 GREENFIELD PKWY., STE. 102
LIVERPOOL, NY 13088

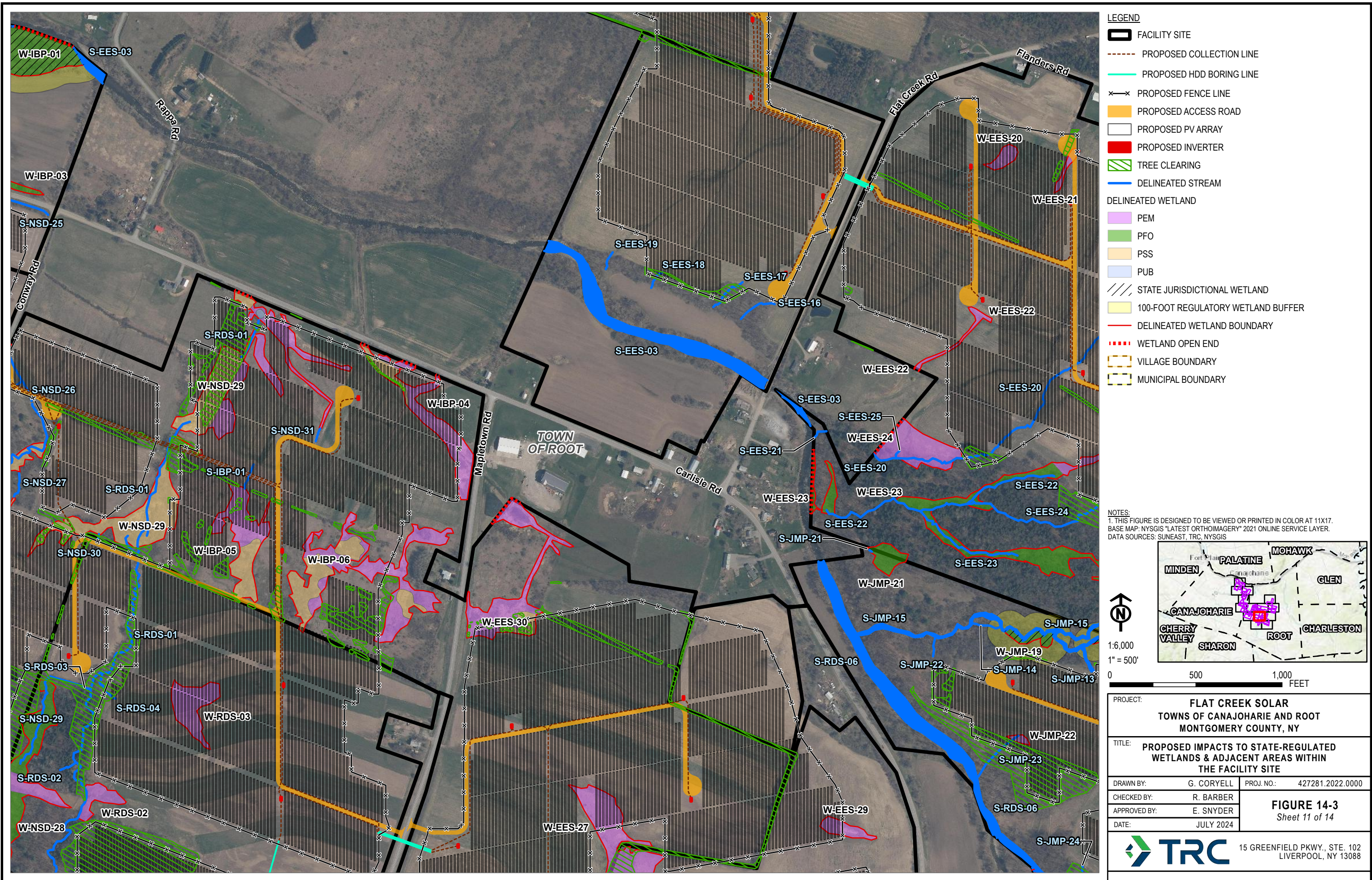


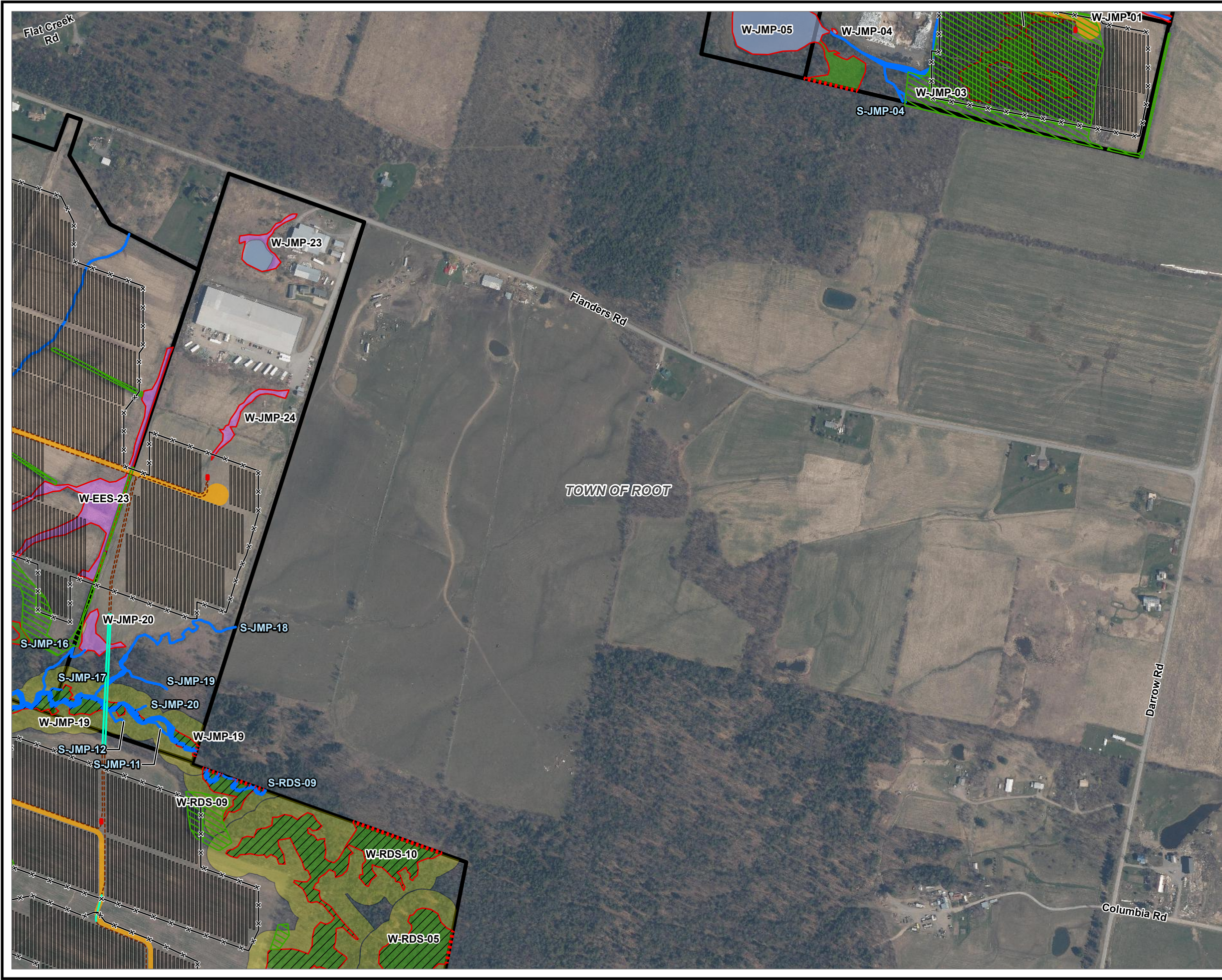












LEGEND

- FACILITY SITE
- PROPOSED COLLECTION LINE
- PROPOSED HDD BORING LINE
- PROPOSED FENCE LINE
- PROPOSED ACCESS ROAD
- PROPOSED PV ARRAY
- PROPOSED INVERTER
- TREE CLEARING
- DELINEATED STREAM
- DELINEATED WETLAND
 - PEM
 - PFO
 - PSS
 - PUB
- STATE JURISDICTIONAL WETLAND
- 100-FOOT REGULATORY WETLAND BUFFER
- DELINEATED WETLAND BOUNDARY
- WETLAND OPEN END
- VILLAGE BOUNDARY
- MUNICIPAL BOUNDARY

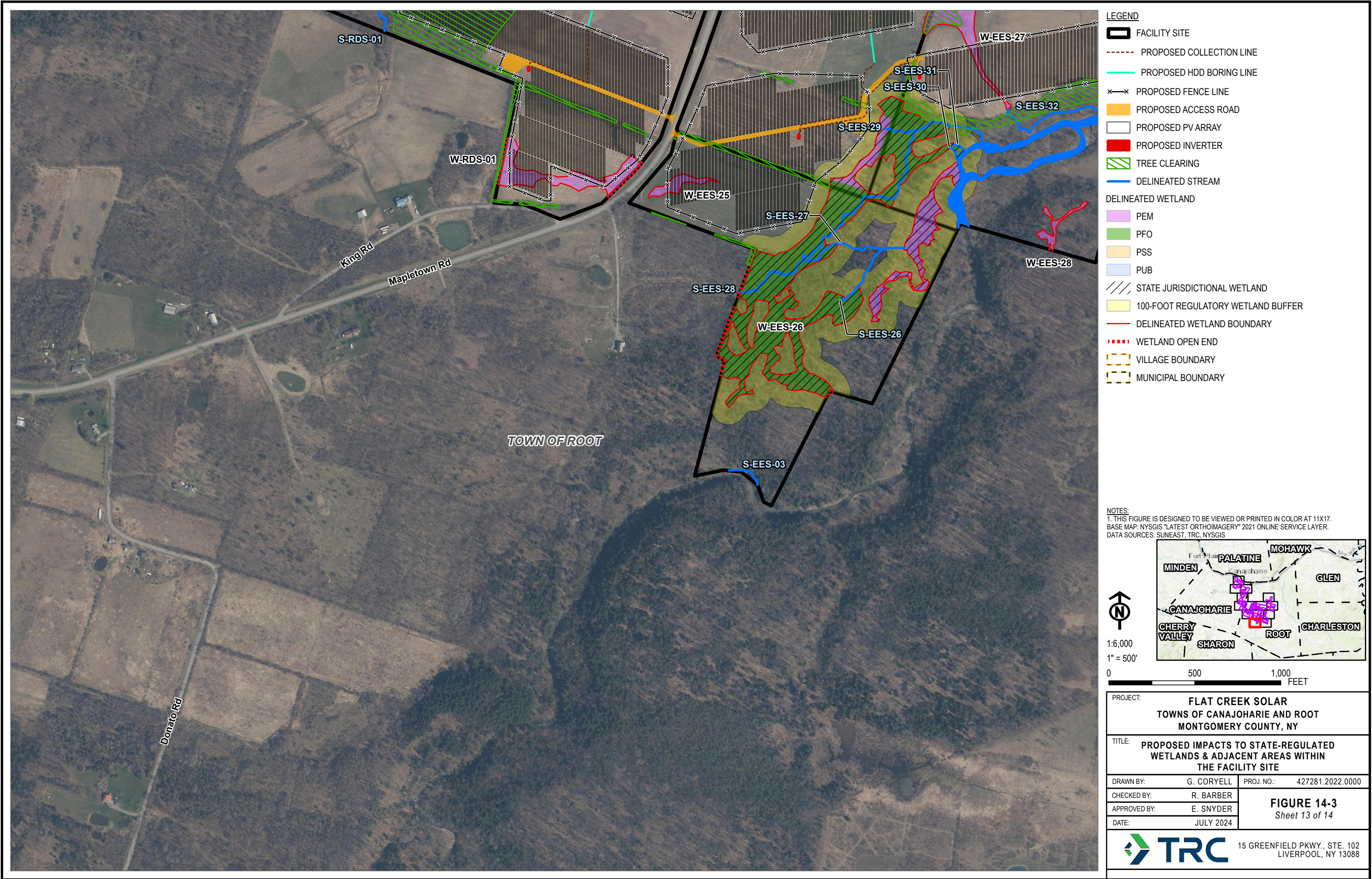
NOTES:

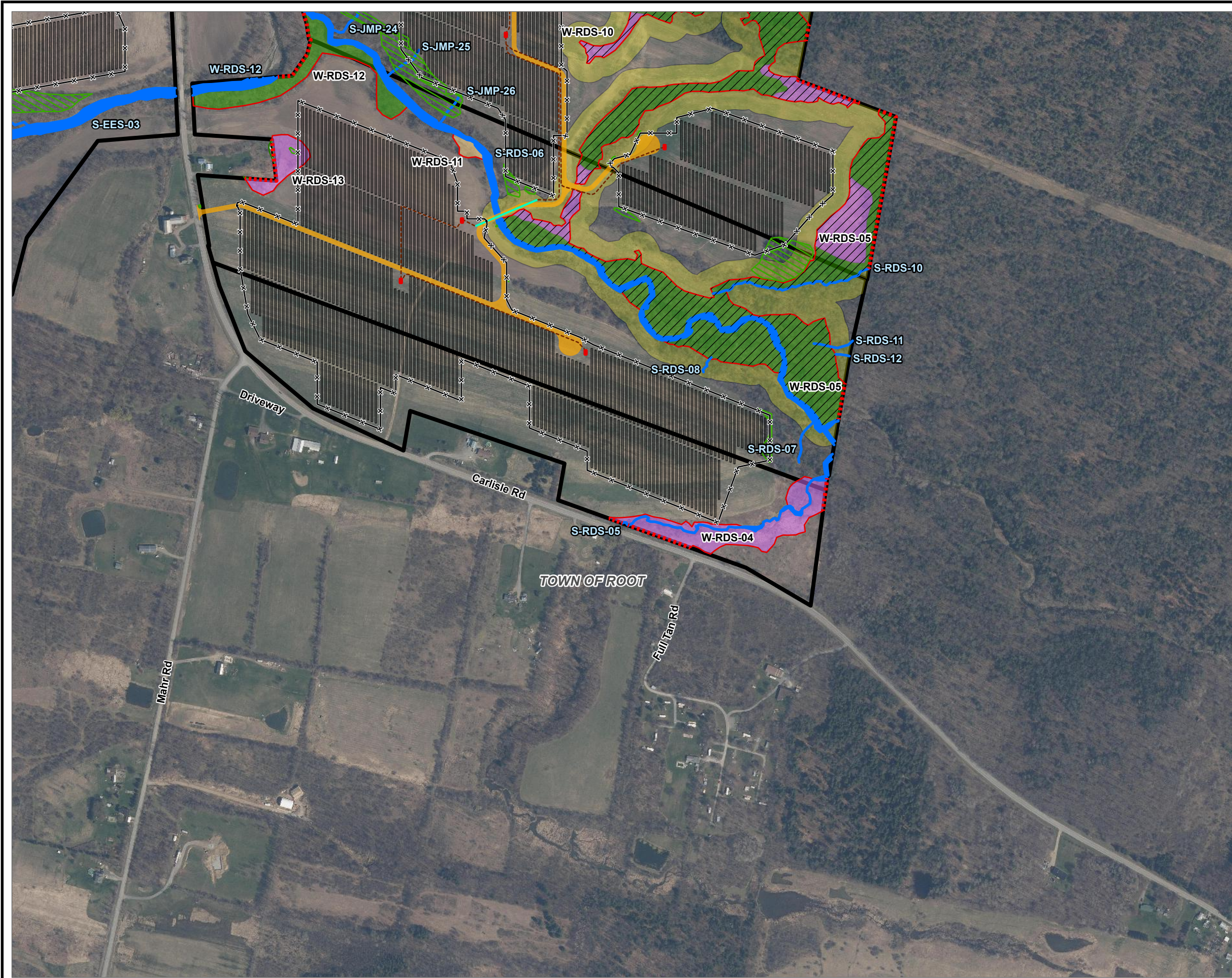
1. THIS FIGURE IS DESIGNED TO BE VIEWED OR PRINTED IN COLOR AT 11X17.
BASE MAP: NYSGIS "LATEST ORTHOMAGERY" 2021 ONLINE SERVICE LAYER.
DATA SOURCES: SUNEAST, TRC, NYSGIS

1:6,000
1" = 500'

PROJECT:		FLAT CREEK SOLAR TOWNS OF CANAJOHARIE AND ROOT MONTGOMERY COUNTY, NY	
TITLE:		PROPOSED IMPACTS TO STATE-REGULATED WETLANDS & ADJACENT AREAS WITHIN THE FACILITY SITE	
DRAWN BY:	G. CORYELL	PROJ. NO.:	427281.2022.0000
CHECKED BY:	R. BARBER	FIGURE 14-3 Sheet 12 of 14	
APPROVED BY:	E. SNYDER		
DATE:	JULY 2024		

15 GREENFIELD PKWY., STE. 102
LIVERPOOL, NY 13088





LEGEND

- FACILITY SITE
- PROPOSED COLLECTION LINE
- PROPOSED HDD BORING LINE
- PROPOSED FENCE LINE
- PROPOSED ACCESS ROAD
- PROPOSED PV ARRAY
- PROPOSED INVERTER
- TREE CLEARING
- DELINEATED STREAM
- DELINEATED WETLAND
 - PEM
 - PFO
 - PSS
 - PUB
- STATE JURISDICTIONAL WETLAND
- 100-FOOT REGULATORY WETLAND BUFFER
- DELINEATED WETLAND BOUNDARY
- WETLAND OPEN END
- ESTIMATED WETLAND
- VILLAGE BOUNDARY
- MUNICIPAL BOUNDARY

NOTES:

1. THIS FIGURE IS DESIGNED TO BE VIEWED OR PRINTED IN COLOR AT 11X17.
BASE MAP: NYSGIS "LATEST ORTHOMAGERY" 2021 ONLINE SERVICE LAYER.
DATA SOURCES: SUNEAST, TRC, NYSGIS

1:6,000
1" = 500'

0 500 1,000 FEET

PROJECT:		FLAT CREEK SOLAR TOWNS OF CANAJOHARIE AND ROOT MONTGOMERY COUNTY, NY	
TITLE:		PROPOSED IMPACTS TO STATE-REGULATED WETLANDS & ADJACENT AREAS WITHIN THE FACILITY SITE	
DRAWN BY:	G. CORYELL	PROJ. NO.:	427281.2022.0000
CHECKED BY:	R. BARBER	FIGURE 14-3 Sheet 14 of 14	
APPROVED BY:	E. SNYDER		
DATE:	JULY 2024		

15 GREENFIELD PKWY., STE. 102
LIVERPOOL, NY 13088