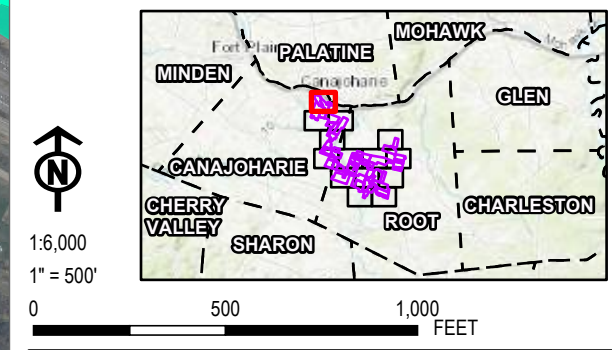
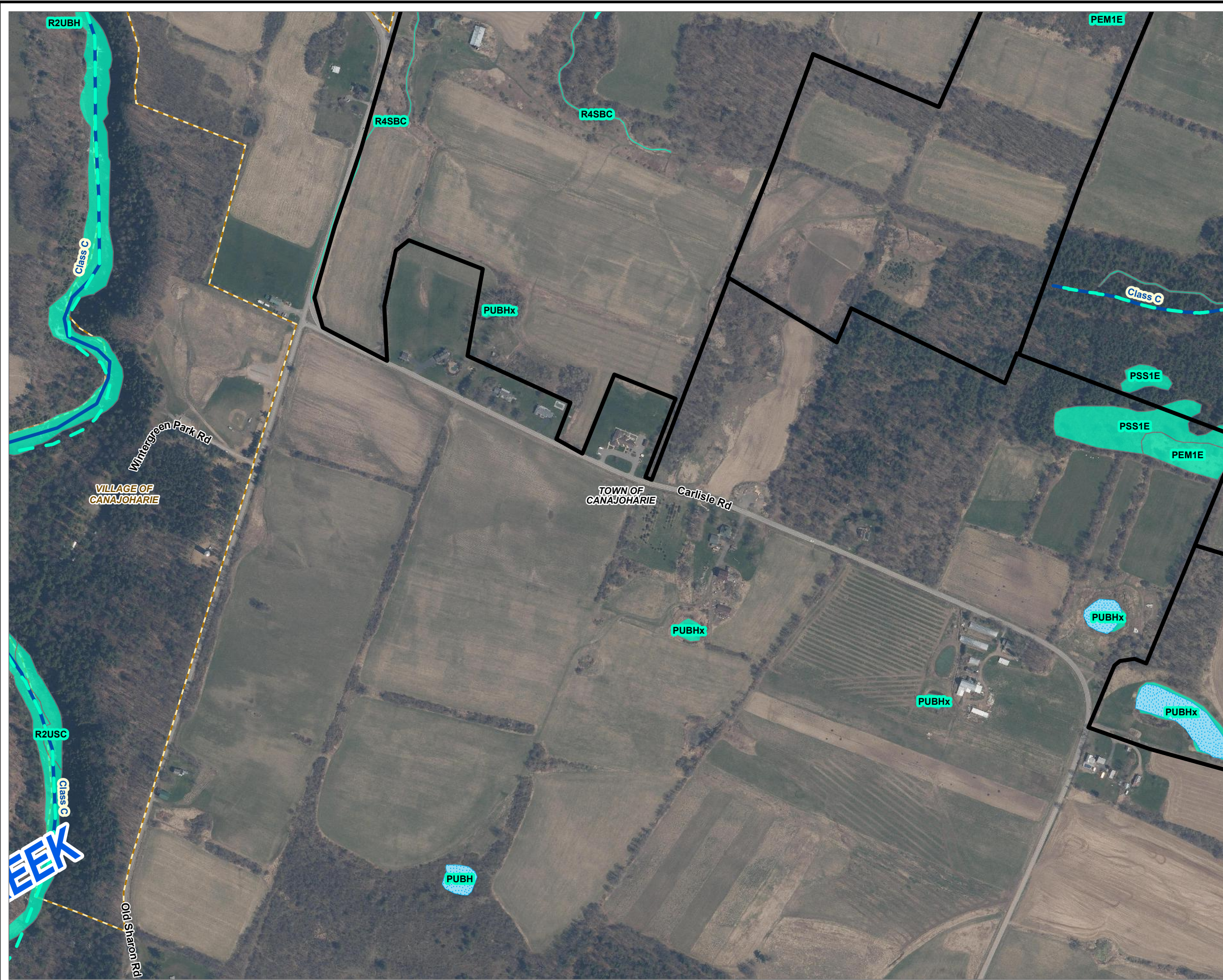


- LEGEND**
- FACILITY SITE
 - WATERBODIES (NHD)
 - WETLANDS (NYSDEC)
 - NYDEC WETLAND 100-FOOT ADJACENT AREA
 - STREAM (NYSDEC)
 - STREAM (NHD)
 - WETLANDS (NWI)
 - VILLAGE BOUNDARY
 - MUNICIPAL BOUNDARY
 - COUNTY BOUNDARY

NOTES:
 1. THIS FIGURE IS DESIGNED TO BE VIEWED OR PRINTED IN COLOR AT 11X17.
 BASE MAP: NYSGIS "LATEST ORTHOIMAGERY" 2021 ONLINE SERVICE LAYER.
 DATA SOURCES: SUNEAST, TRC, NYSGIS, NHD, NWI

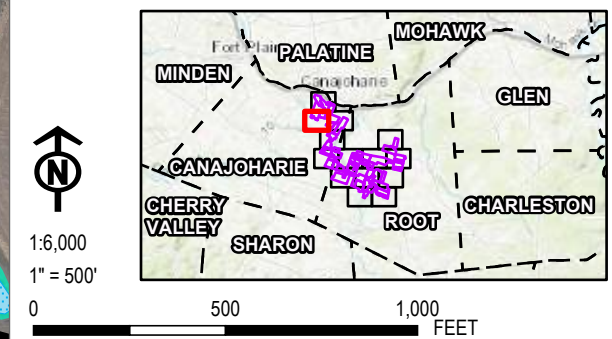


PROJECT: FLAT CREEK SOLAR TOWNS OF CANAJOHARIE AND ROOT MONTGOMERY COUNTY, NY	
TITLE: FEDERAL & STATE REGULATED WETLANDS & ADJACENT AREAS	
DRAWN BY: G. CORYELL	PROJ. NO.: 427281.2022.0000
CHECKED BY: R. BARBER	FIGURE 14-1 Sheet 1 of 14
APPROVED BY: E. SNYDER	
DATE: JUNE 2024	

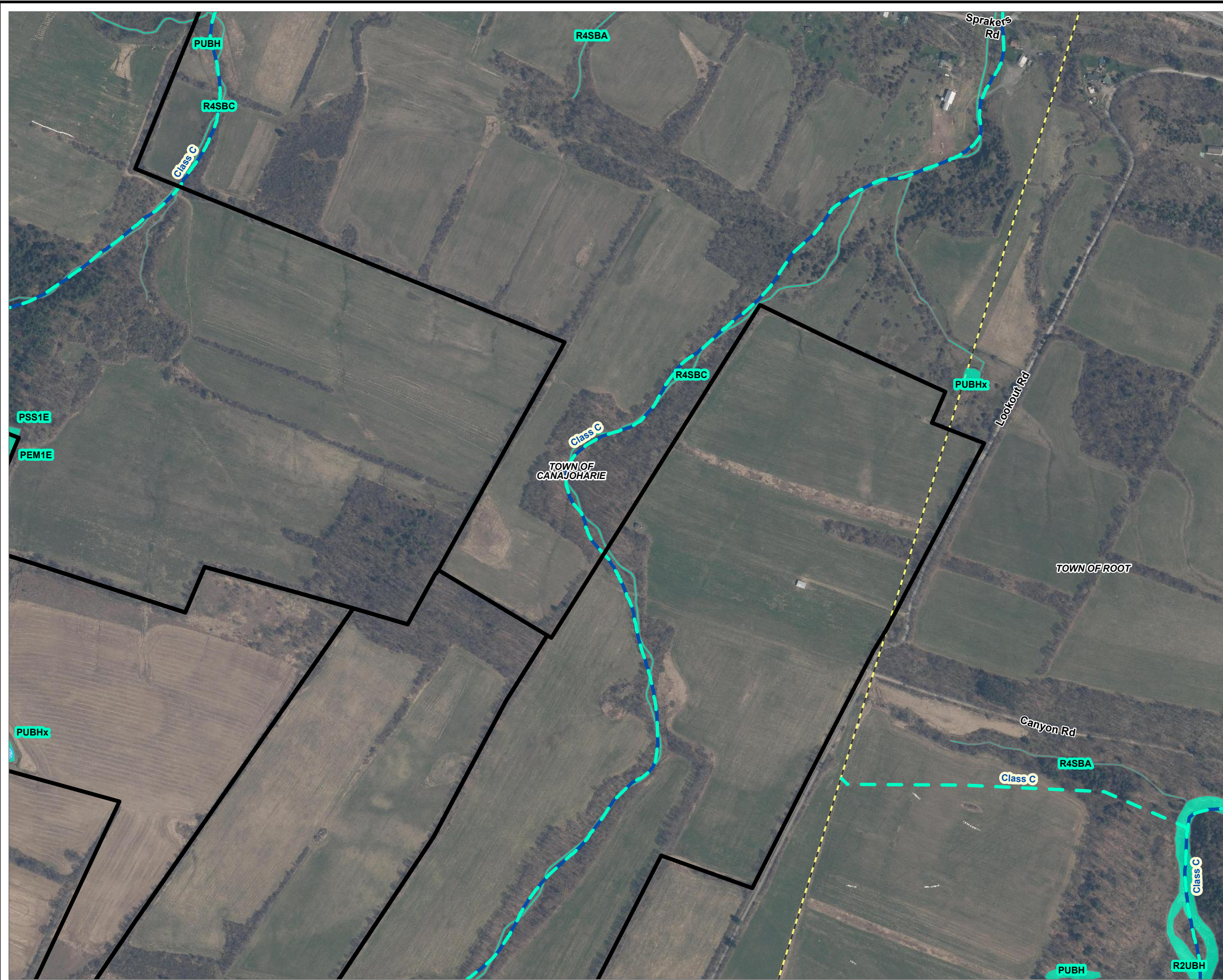


- LEGEND**
- FACILITY SITE
 - WATERBODIES (NHD)
 - WETLANDS (NYSDEC)
 - NYDEC WETLAND 100-FOOT ADJACENT AREA
 - STREAM (NYSDEC)
 - STREAM (NHD)
 - WETLANDS (NWI)
 - VILLAGE BOUNDARY
 - MUNICIPAL BOUNDARY
 - COUNTY BOUNDARY

NOTES:
 1. THIS FIGURE IS DESIGNED TO BE VIEWED OR PRINTED IN COLOR AT 11X17.
 BASE MAP: NYSGIS "LATEST ORTHOIMAGERY" 2021 ONLINE SERVICE LAYER.
 DATA SOURCES: SUNEAST, TRC, NYSGIS, NHD, NWI

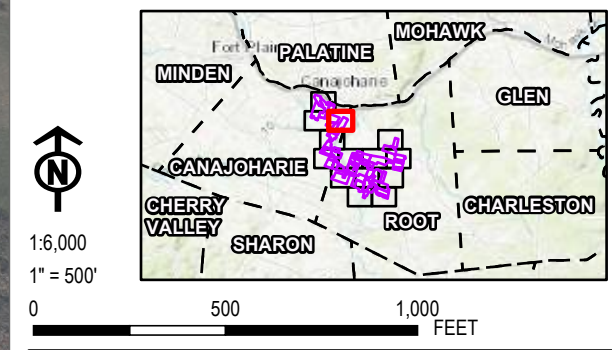


PROJECT: FLAT CREEK SOLAR TOWNS OF CANAJOHARIE AND ROOT MONTGOMERY COUNTY, NY	
TITLE: FEDERAL & STATE REGULATED WETLANDS & ADJACENT AREAS	
DRAWN BY: G. CORYELL	PROJ. NO.: 427281.2022.0000
CHECKED BY: R. BARBER	FIGURE 14-1 Sheet 2 of 14
APPROVED BY: E. SNYDER	
DATE: JUNE 2024	

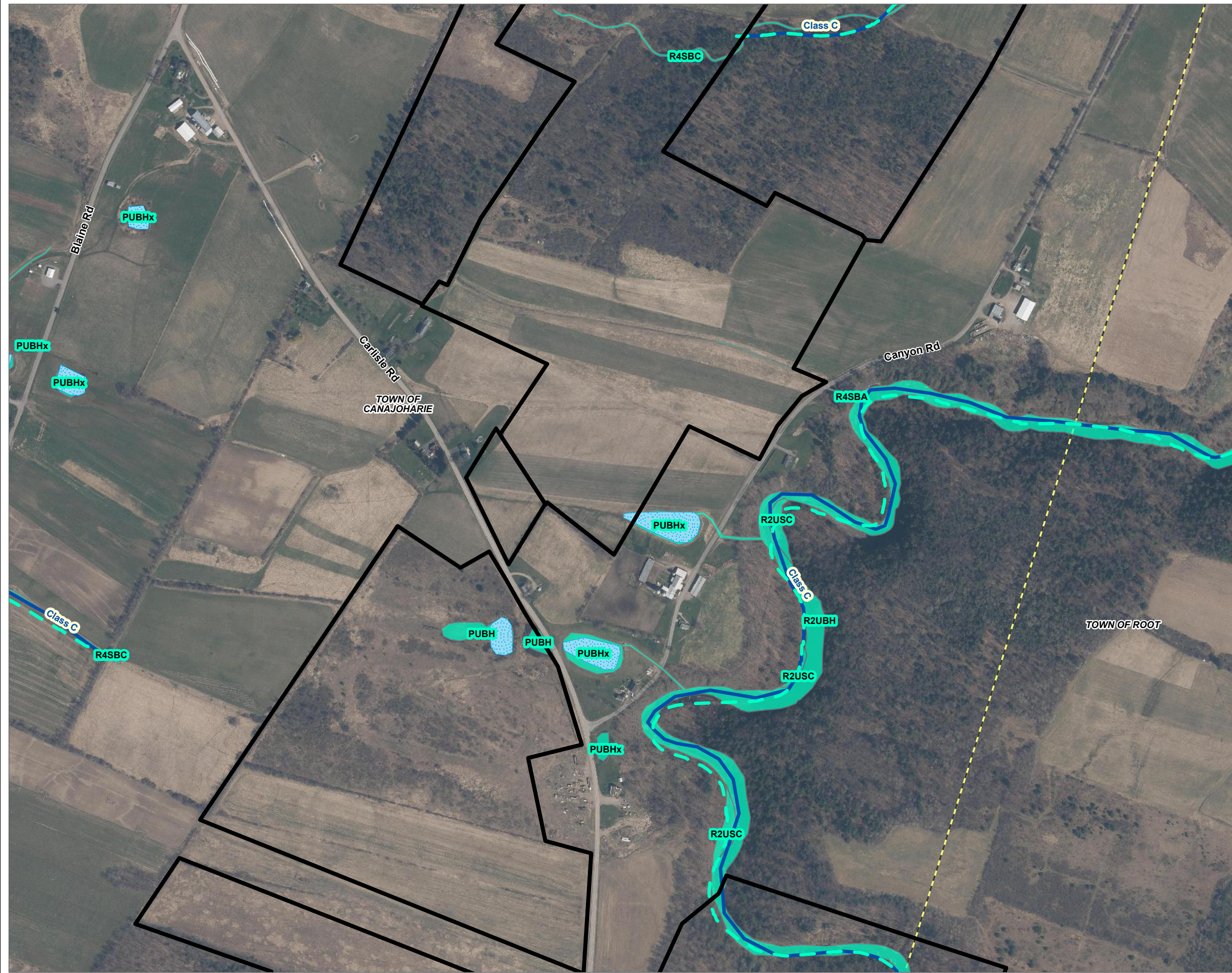


- LEGEND**
- FACILITY SITE
 - WATERBODIES (NHD)
 - WETLANDS (NYSDEC)
 - NYDEC WETLAND 100-FOOT ADJACENT AREA
 - STREAM (NYSDEC)
 - STREAM (NHD)
 - WETLANDS (NWI)
 - VILLAGE BOUNDARY
 - MUNICIPAL BOUNDARY
 - COUNTY BOUNDARY

NOTES:
 1. THIS FIGURE IS DESIGNED TO BE VIEWED OR PRINTED IN COLOR AT 11X17.
 BASE MAP: NYSGIS "LATEST ORTHOIMAGERY" 2021 ONLINE SERVICE LAYER.
 DATA SOURCES: SUNEAST, TRC, NYSGIS, NHD, NWI

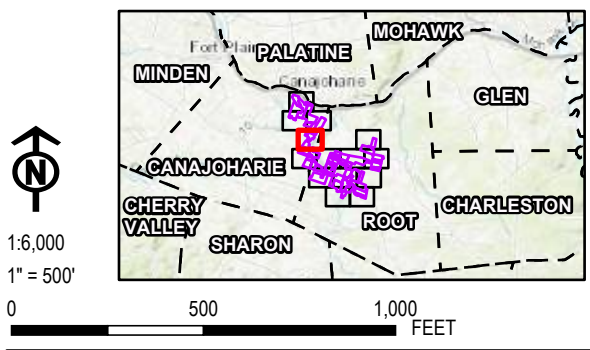


PROJECT: FLAT CREEK SOLAR TOWNS OF CANAJOHARIE AND ROOT MONTGOMERY COUNTY, NY	
TITLE: FEDERAL & STATE REGULATED WETLANDS & ADJACENT AREAS	
DRAWN BY: G. CORYELL	PROJ. NO.: 427281.2022.0000
CHECKED BY: R. BARBER	FIGURE 14-1 Sheet 3 of 14
APPROVED BY: E. SNYDER	
DATE: JUNE 2024	

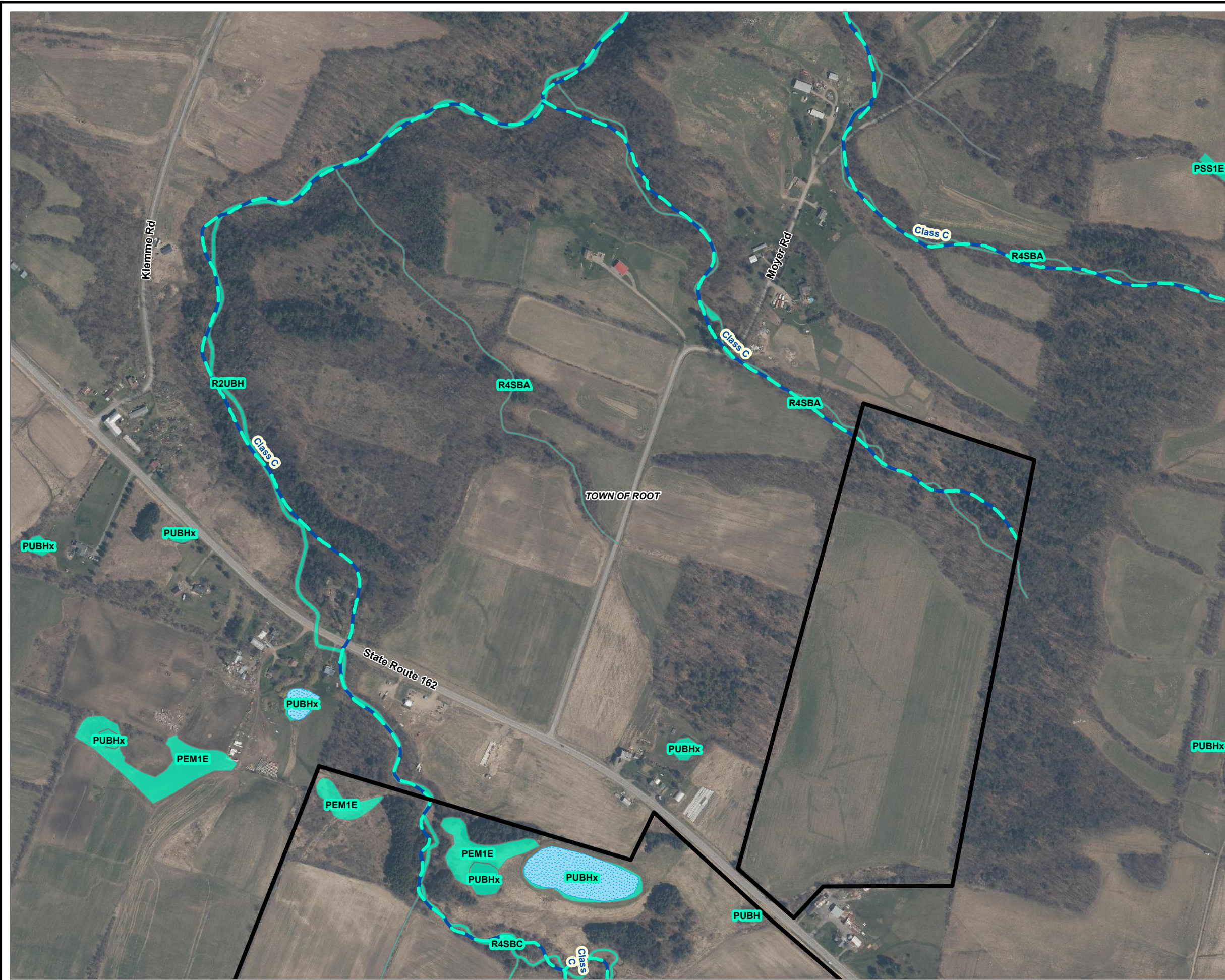


- LEGEND**
- FACILITY SITE
 - WATERBODIES (NHD)
 - WETLANDS (NYSDEC)
 - NYDEC WETLAND 100-FOOT ADJACENT AREA
 - STREAM (NYSDEC)
 - STREAM (NHD)
 - WETLANDS (NWI)
 - VILLAGE BOUNDARY
 - MUNICIPAL BOUNDARY
 - COUNTY BOUNDARY

NOTES:
 1. THIS FIGURE IS DESIGNED TO BE VIEWED OR PRINTED IN COLOR AT 11X17.
 BASE MAP: NYSGIS "LATEST ORTHOIMAGERY" 2021 ONLINE SERVICE LAYER.
 DATA SOURCES: SUNEAST, TRC, NYSGIS, NHD, NWI

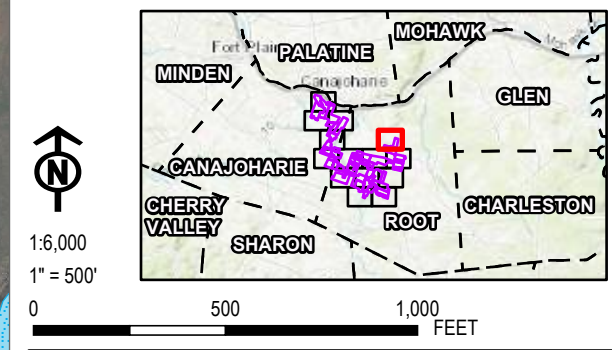


PROJECT:		FLAT CREEK SOLAR TOWNS OF CANAJOHARIE AND ROOT MONTGOMERY COUNTY, NY	
TITLE:		FEDERAL & STATE REGULATED WETLANDS & ADJACENT AREAS	
DRAWN BY:	G. CORYELL	PROJ. NO.:	427281.2022.0000
CHECKED BY:	R. BARBER	FIGURE 14-1 Sheet 4 of 14	
APPROVED BY:	E. SNYDER		
DATE:	JUNE 2024		

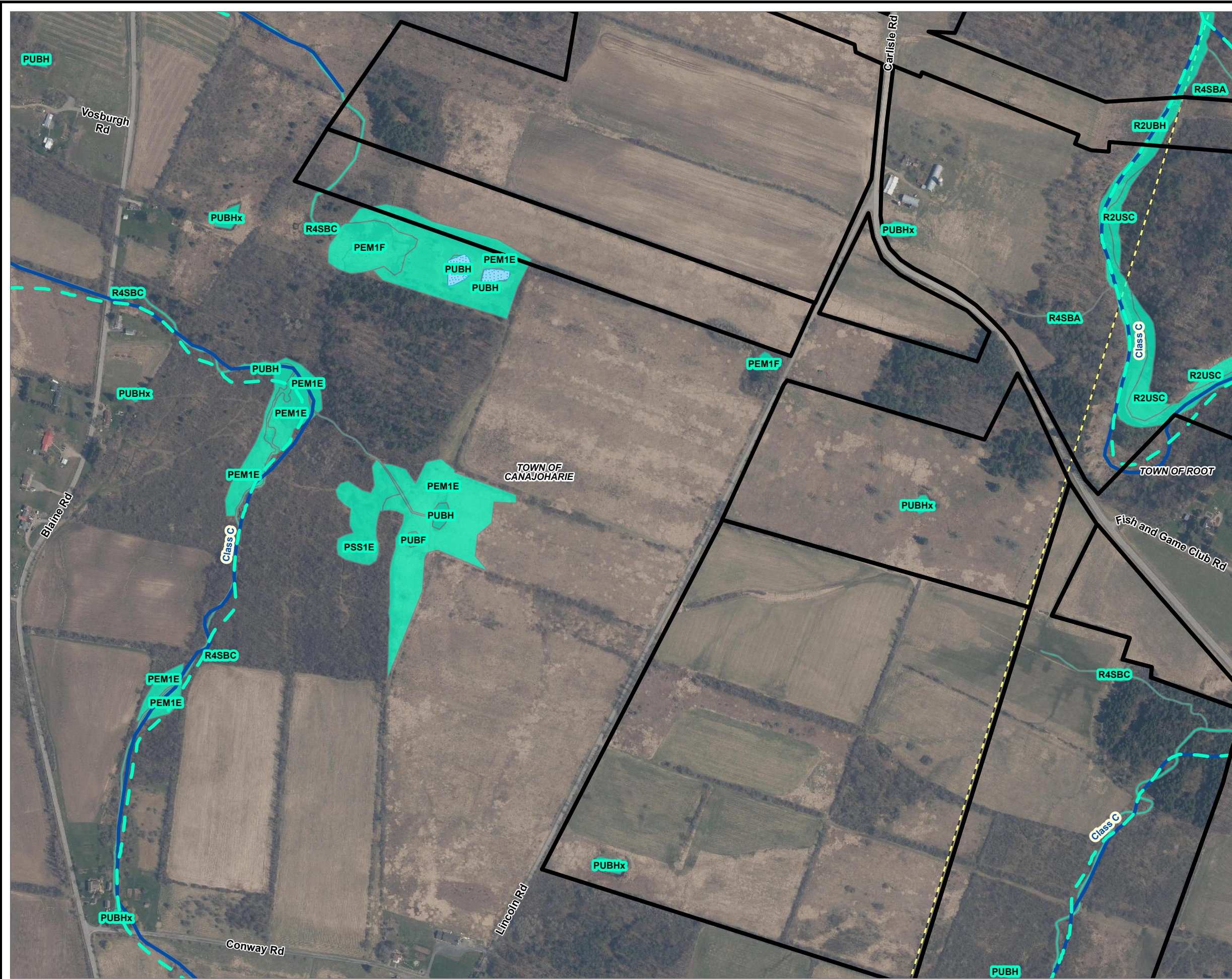


- LEGEND**
- FACILITY SITE
 - WATERBODIES (NHD)
 - WETLANDS (NYSDEC)
 - NYDEC WETLAND 100-FOOT ADJACENT AREA
 - STREAM (NYSDEC)
 - STREAM (NHD)
 - WETLANDS (NWI)
 - VILLAGE BOUNDARY
 - MUNICIPAL BOUNDARY
 - COUNTY BOUNDARY

NOTES:
 1. THIS FIGURE IS DESIGNED TO BE VIEWED OR PRINTED IN COLOR AT 11X17.
 BASE MAP: NYSGIS "LATEST ORTHOIMAGERY" 2021 ONLINE SERVICE LAYER.
 DATA SOURCES: SUNEAST, TRC, NYSGIS, NHD, NWI

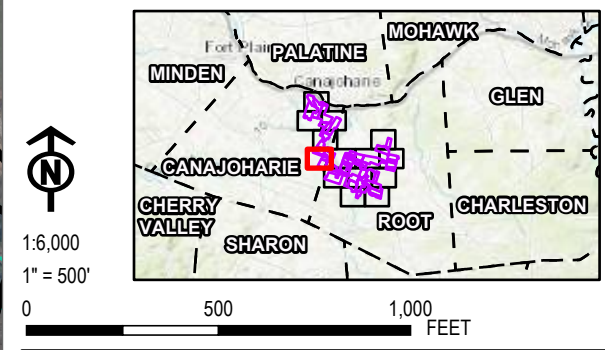


PROJECT: FLAT CREEK SOLAR TOWNS OF CANAJOHARIE AND ROOT MONTGOMERY COUNTY, NY	
TITLE: FEDERAL & STATE REGULATED WETLANDS & ADJACENT AREAS	
DRAWN BY: G. CORYELL	PROJ. NO.: 427281.2022.0000
CHECKED BY: R. BARBER	FIGURE 14-1 Sheet 5 of 14
APPROVED BY: E. SNYDER	
DATE: JUNE 2024	



- LEGEND**
- FACILITY SITE
 - WATERBODIES (NHD)
 - WETLANDS (NYSDEC)
 - NYDEC WETLAND 100-FOOT ADJACENT AREA
 - STREAM (NYSDEC)
 - STREAM (NHD)
 - WETLANDS (NWI)
 - VILLAGE BOUNDARY
 - MUNICIPAL BOUNDARY
 - COUNTY BOUNDARY

NOTES:
 1. THIS FIGURE IS DESIGNED TO BE VIEWED OR PRINTED IN COLOR AT 11X17.
 BASE MAP: NYSGIS "LATEST ORTHOIMAGERY" 2021 ONLINE SERVICE LAYER.
 DATA SOURCES: SUNEAST, TRC, NYSGIS, NHD, NWI

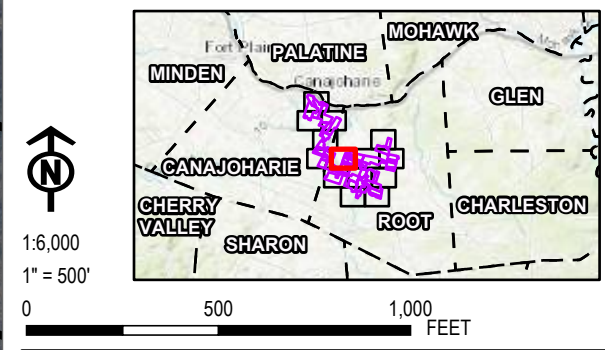


PROJECT:		FLAT CREEK SOLAR	
		TOWNS OF CANAJOHARIE AND ROOT	
		MONTGOMERY COUNTY, NY	
TITLE:			
FEDERAL & STATE REGULATED WETLANDS & ADJACENT AREAS			
DRAWN BY:	G. CORYELL	PROJ. NO.:	427281.2022.0000
CHECKED BY:	R. BARBER	FIGURE 14-1 Sheet 6 of 14	
APPROVED BY:	E. SNYDER		
DATE:	JUNE 2024		



- LEGEND**
- FACILITY SITE
 - WATERBODIES (NHD)
 - WETLANDS (NYSDEC)
 - NYDEC WETLAND 100-FOOT ADJACENT AREA
 - STREAM (NYSDEC)
 - STREAM (NHD)
 - WETLANDS (NWI)
 - VILLAGE BOUNDARY
 - MUNICIPAL BOUNDARY
 - COUNTY BOUNDARY

NOTES:
 1. THIS FIGURE IS DESIGNED TO BE VIEWED OR PRINTED IN COLOR AT 11X17.
 BASE MAP: NYSGIS "LATEST ORTHOIMAGERY" 2021 ONLINE SERVICE LAYER.
 DATA SOURCES: SUNEAST, TRC, NYSGIS, NHD, NWI

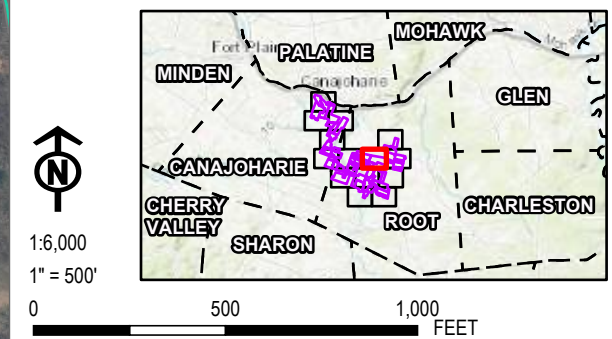


PROJECT:		FLAT CREEK SOLAR	
		TOWNS OF CANAJOHARIE AND ROOT	
		MONTGOMERY COUNTY, NY	
TITLE:			
FEDERAL & STATE REGULATED WETLANDS & ADJACENT AREAS			
DRAWN BY:	G. CORYELL	PROJ. NO.:	427281.2022.0000
CHECKED BY:	R. BARBER	FIGURE 14-1 Sheet 7 of 14	
APPROVED BY:	E. SNYDER		
DATE:	JUNE 2024		

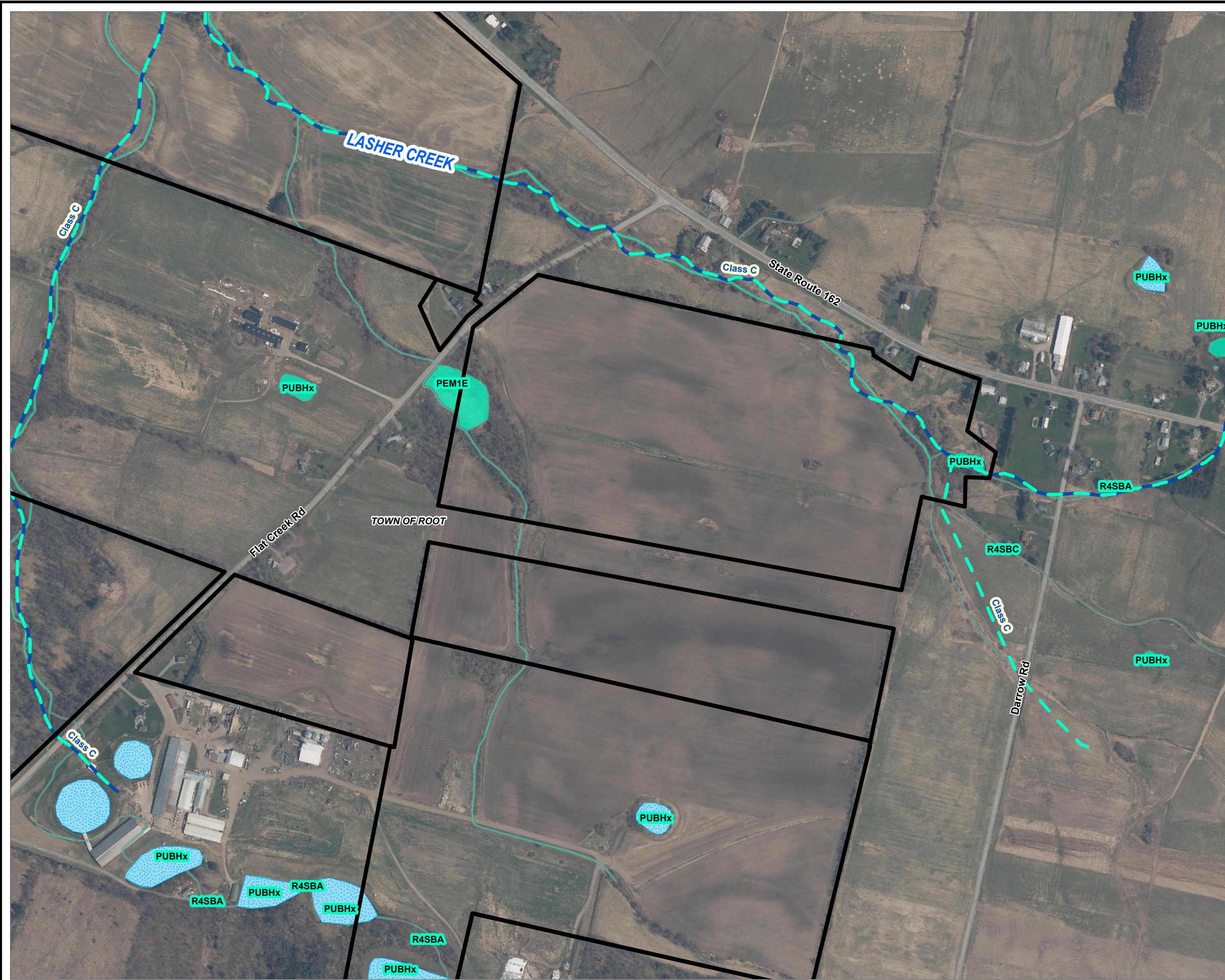


- LEGEND**
- FACILITY SITE
 - WATERBODIES (NHD)
 - WETLANDS (NYSDEC)
 - NYDEC WETLAND 100-FOOT ADJACENT AREA
 - STREAM (NYSDEC)
 - STREAM (NHD)
 - WETLANDS (NWI)
 - VILLAGE BOUNDARY
 - MUNICIPAL BOUNDARY
 - COUNTY BOUNDARY











NOTES:
 1. THIS FIGURE IS DESIGNED TO BE VIEWED OR PRINTED IN COLOR AT 11X17.
 BASE MAP: NYSGIS "LATEST ORTHOIMAGERY" 2021 ONLINE SERVICE LAYER.
 DATA SOURCES: SUNEAST, TRC, NYSGIS, NHD, NWI



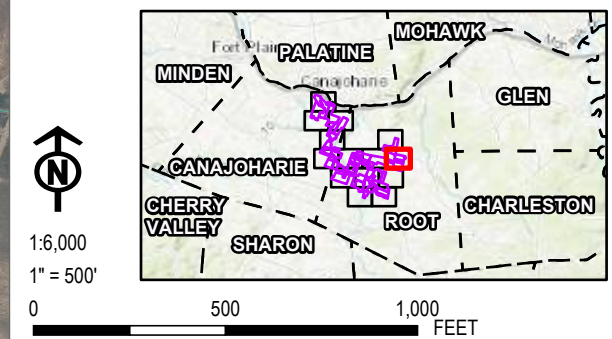
PROJECT:		FLAT CREEK SOLAR TOWNS OF CANAJOHARIE AND ROOT MONTGOMERY COUNTY, NY	
TITLE:		FEDERAL & STATE REGULATED WETLANDS & ADJACENT AREAS	
DRAWN BY:	G. CORYELL	PROJ. NO.:	427281.2022.0000
CHECKED BY:	R. BARBER	FIGURE 14-1 Sheet 8 of 14	
APPROVED BY:	E. SNYDER		
DATE:	JUNE 2024		



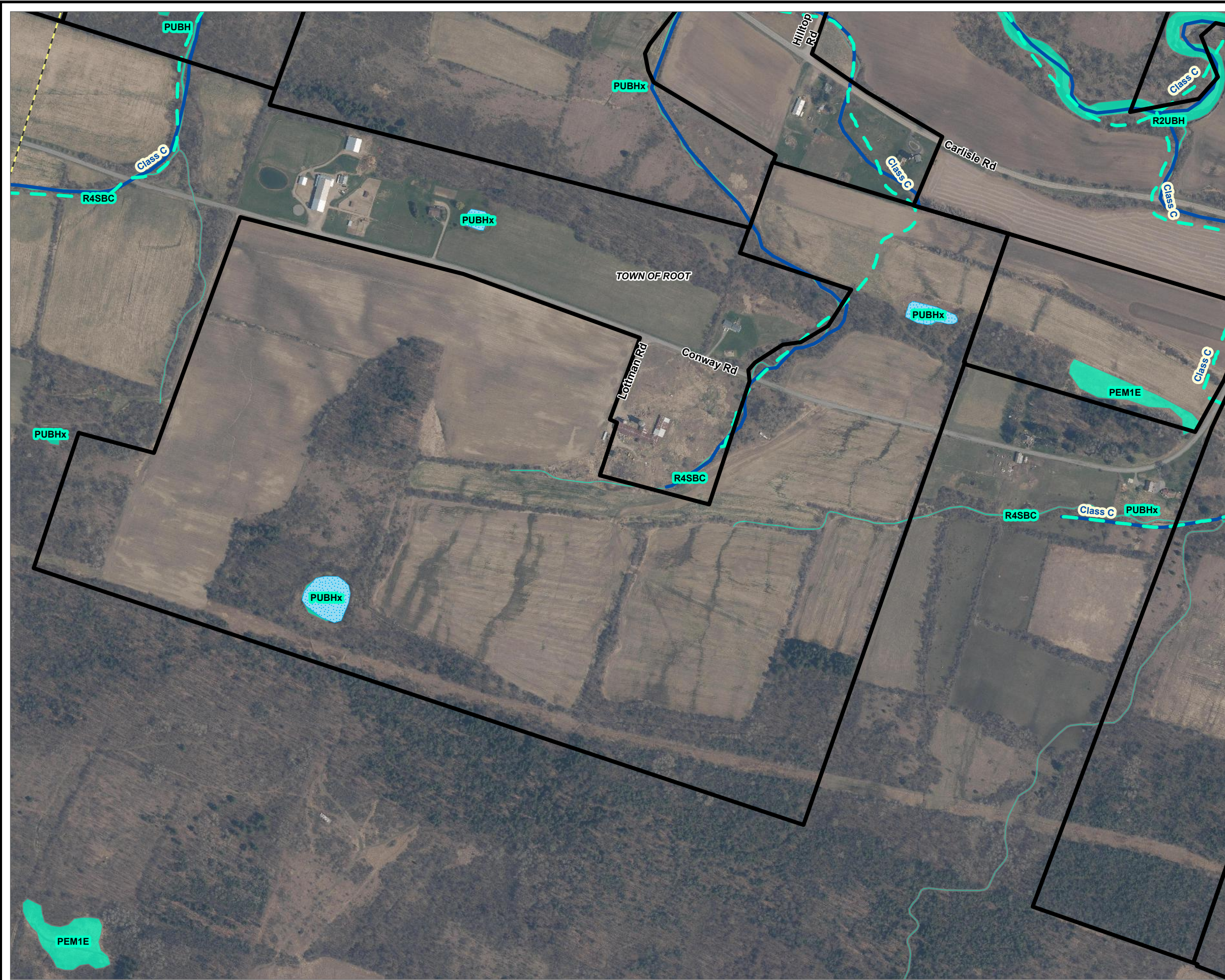
LEGEND

-  FACILITY SITE
-  WATERBODIES (NHD)
-  WETLANDS (NYSDEC)
-  NYDEC WETLAND 100-FOOT ADJACENT AREA
-  STREAM (NYSDEC)
-  STREAM (NHD)
-  WETLANDS (NWI)
-  VILLAGE BOUNDARY
-  MUNICIPAL BOUNDARY
-  COUNTY BOUNDARY

NOTES:
 1. THIS FIGURE IS DESIGNED TO BE VIEWED OR PRINTED IN COLOR AT 11X17.
 BASE MAP: NYSGIS "LATEST ORTHOIMAGERY" 2021 ONLINE SERVICE LAYER.
 DATA SOURCES: SUNEAST, TRC, NYSGIS, NHD, NWI

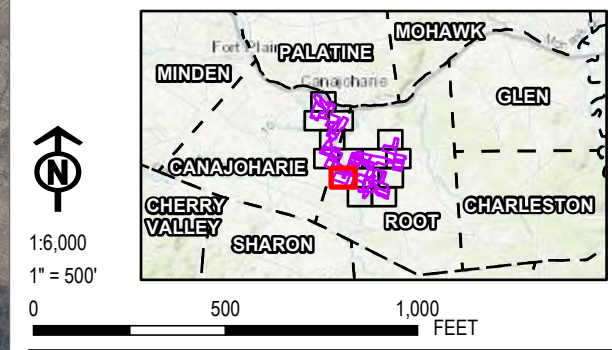


PROJECT:	
FLAT CREEK SOLAR TOWNS OF CANAJOHARIE AND ROOT MONTGOMERY COUNTY, NY	
TITLE:	
FEDERAL & STATE REGULATED WETLANDS & ADJACENT AREAS	
DRAWN BY: G. CORYELL	PROJ. NO.: 427281.2022.0000
CHECKED BY: R. BARBER	FIGURE 14-1 Sheet 9 of 14
APPROVED BY: E. SNYDER	
DATE: JUNE 2024	



- LEGEND**
- FACILITY SITE
 - WATERBODIES (NHD)
 - WETLANDS (NYSDEC)
 - NYDEC WETLAND 100-FOOT ADJACENT AREA
 - STREAM (NYSDEC)
 - STREAM (NHD)
 - WETLANDS (NWI)
 - VILLAGE BOUNDARY
 - MUNICIPAL BOUNDARY
 - COUNTY BOUNDARY

NOTES:
 1. THIS FIGURE IS DESIGNED TO BE VIEWED OR PRINTED IN COLOR AT 11X17.
 BASE MAP: NYSGIS "LATEST ORTHOIMAGERY" 2021 ONLINE SERVICE LAYER.
 DATA SOURCES: SUNEAST, TRC, NYSGIS, NHD, NWI

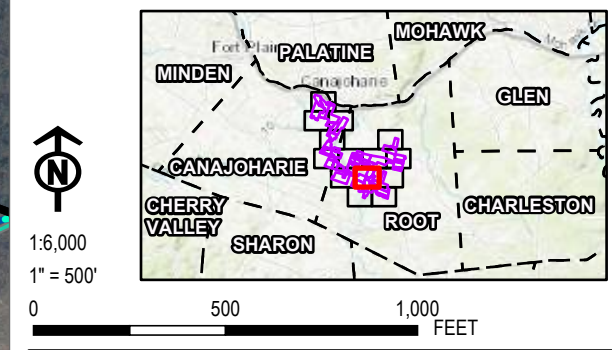


PROJECT:		FLAT CREEK SOLAR TOWNS OF CANAJOHARIE AND ROOT MONTGOMERY COUNTY, NY	
TITLE:			
FEDERAL & STATE REGULATED WETLANDS & ADJACENT AREAS			
DRAWN BY:	G. CORYELL	PROJ. NO.:	427281.2022.0000
CHECKED BY:	R. BARBER	FIGURE 14-1 Sheet 10 of 14	
APPROVED BY:	E. SNYDER		
DATE:	JUNE 2024		

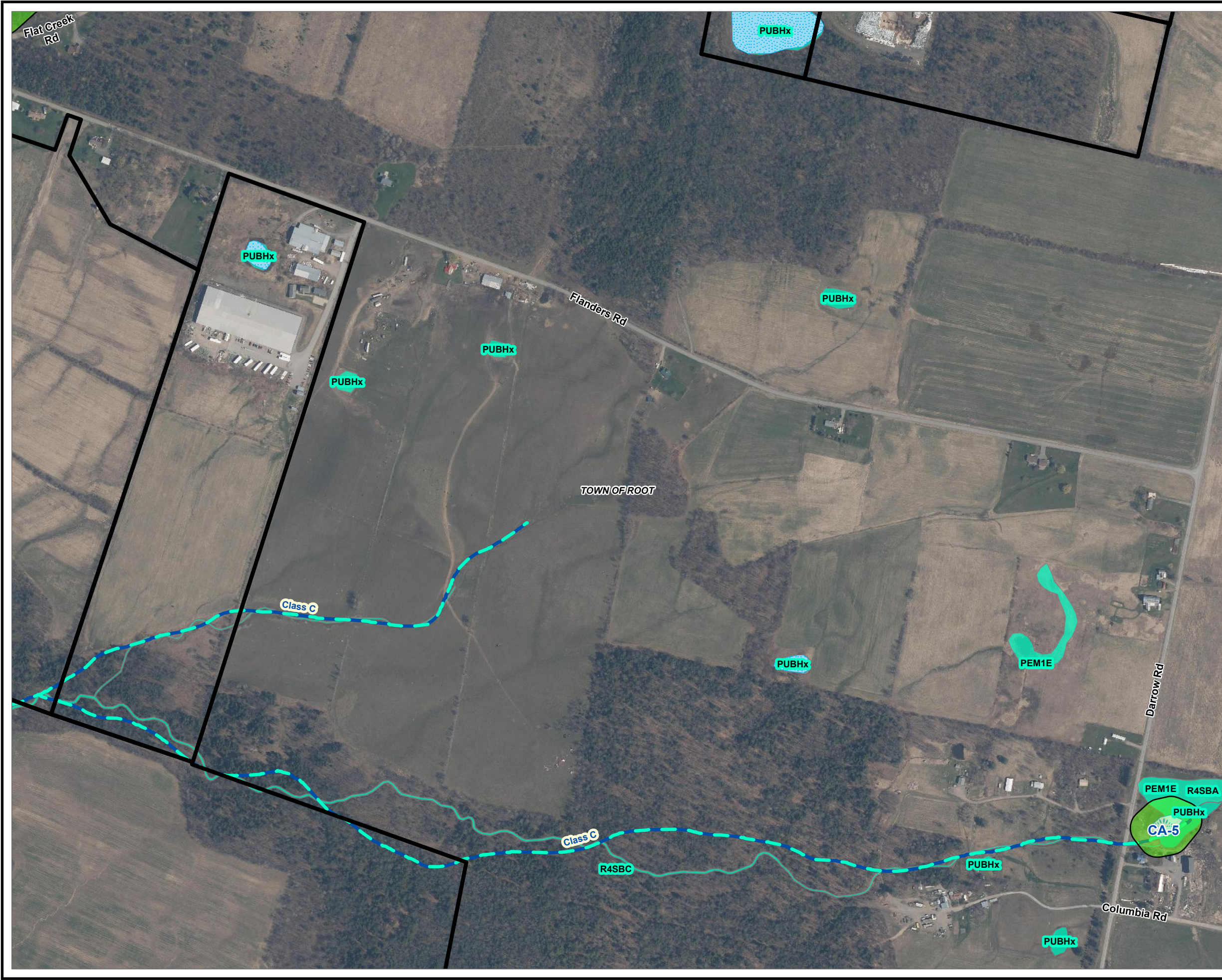


- LEGEND**
- FACILITY SITE
 - WATERBODIES (NHD)
 - WETLANDS (NYSDEC)
 - NYDEC WETLAND 100-FOOT ADJACENT AREA
 - STREAM (NYSDEC)
 - STREAM (NHD)
 - WETLANDS (NWI)
 - VILLAGE BOUNDARY
 - MUNICIPAL BOUNDARY
 - COUNTY BOUNDARY

NOTES:
 1. THIS FIGURE IS DESIGNED TO BE VIEWED OR PRINTED IN COLOR AT 11X17.
 BASE MAP: NYSGIS "LATEST ORTHOIMAGERY" 2021 ONLINE SERVICE LAYER.
 DATA SOURCES: SUNEAST, TRC, NYSGIS, NHD, NWI

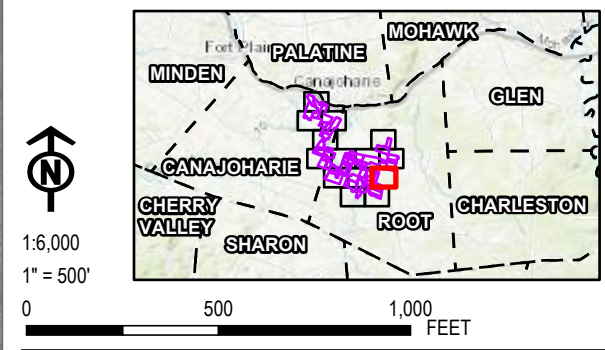


PROJECT: FLAT CREEK SOLAR TOWNS OF CANAJOHARIE AND ROOT MONTGOMERY COUNTY, NY	
TITLE: FEDERAL & STATE REGULATED WETLANDS & ADJACENT AREAS	
DRAWN BY: G. CORYELL	PROJ. NO.: 427281.2022.0000
CHECKED BY: R. BARBER	FIGURE 14-1 Sheet 11 of 14
APPROVED BY: E. SNYDER	
DATE: JUNE 2024	

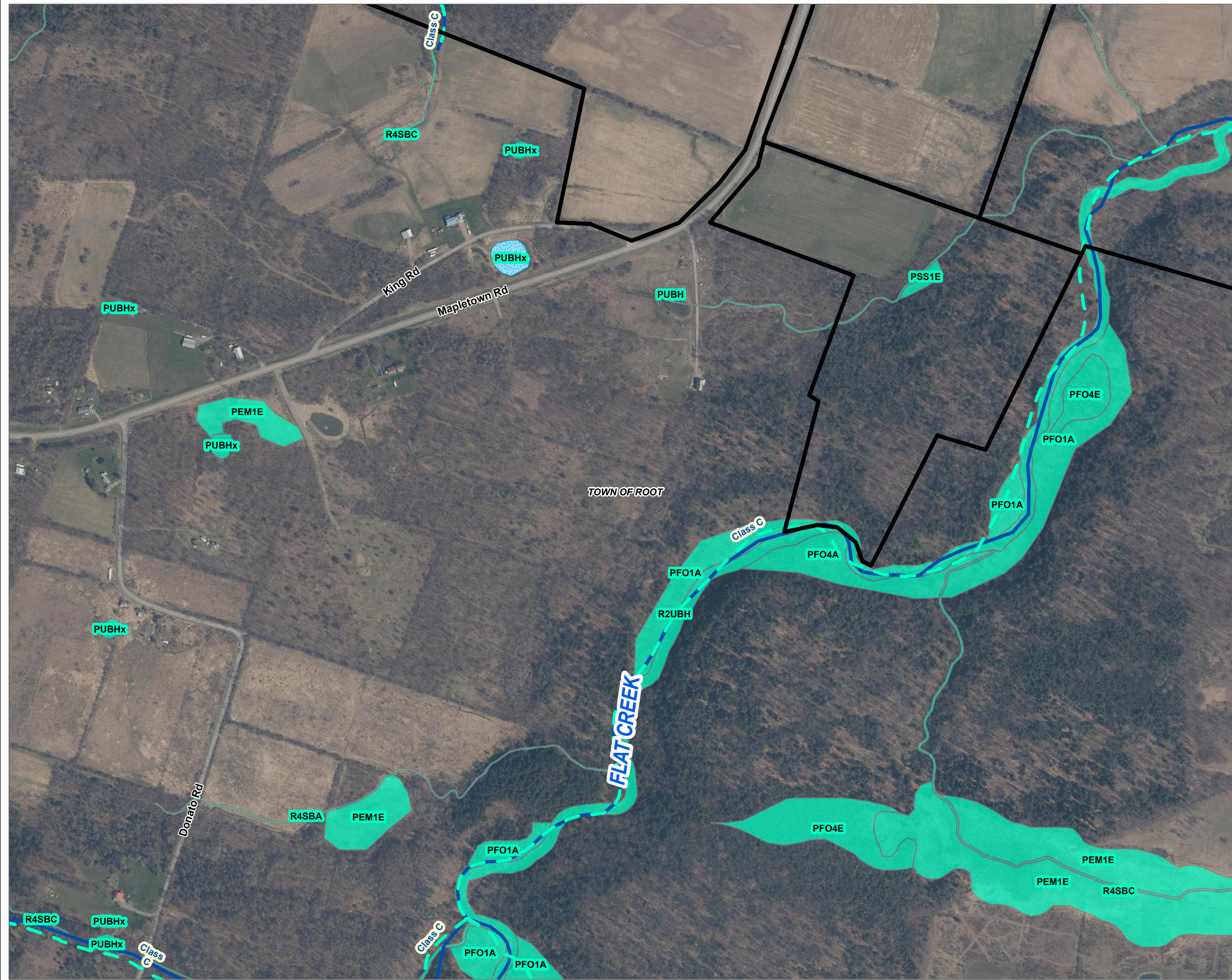


- LEGEND**
- FACILITY SITE
 - WATERBODIES (NHD)
 - WETLANDS (NYSDEC)
 - NYDEC WETLAND 100-FOOT ADJACENT AREA
 - STREAM (NYSDEC)
 - STREAM (NHD)
 - WETLANDS (NWI)
 - VILLAGE BOUNDARY
 - MUNICIPAL BOUNDARY
 - COUNTY BOUNDARY

NOTES:
 1. THIS FIGURE IS DESIGNED TO BE VIEWED OR PRINTED IN COLOR AT 11X17.
 BASE MAP: NYSGIS "LATEST ORTHOIMAGERY" 2021 ONLINE SERVICE LAYER.
 DATA SOURCES: SUNEAST, TRC, NYSGIS, NHD, NWI

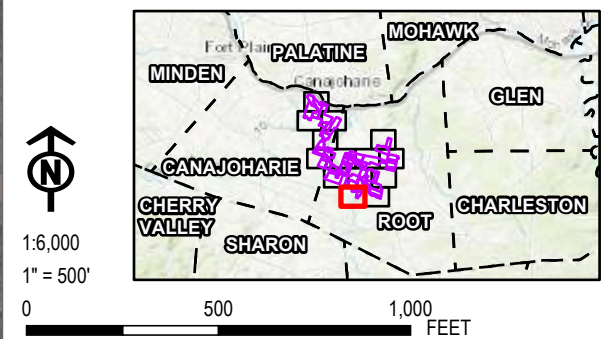


PROJECT: FLAT CREEK SOLAR TOWNS OF CANAJOHARIE AND ROOT MONTGOMERY COUNTY, NY	
TITLE: FEDERAL & STATE REGULATED WETLANDS & ADJACENT AREAS	
DRAWN BY: G. CORYELL	PROJ. NO.: 427281.2022.0000
CHECKED BY: R. BARBER	FIGURE 14-1 Sheet 12 of 14
APPROVED BY: E. SNYDER	
DATE: JUNE 2024	

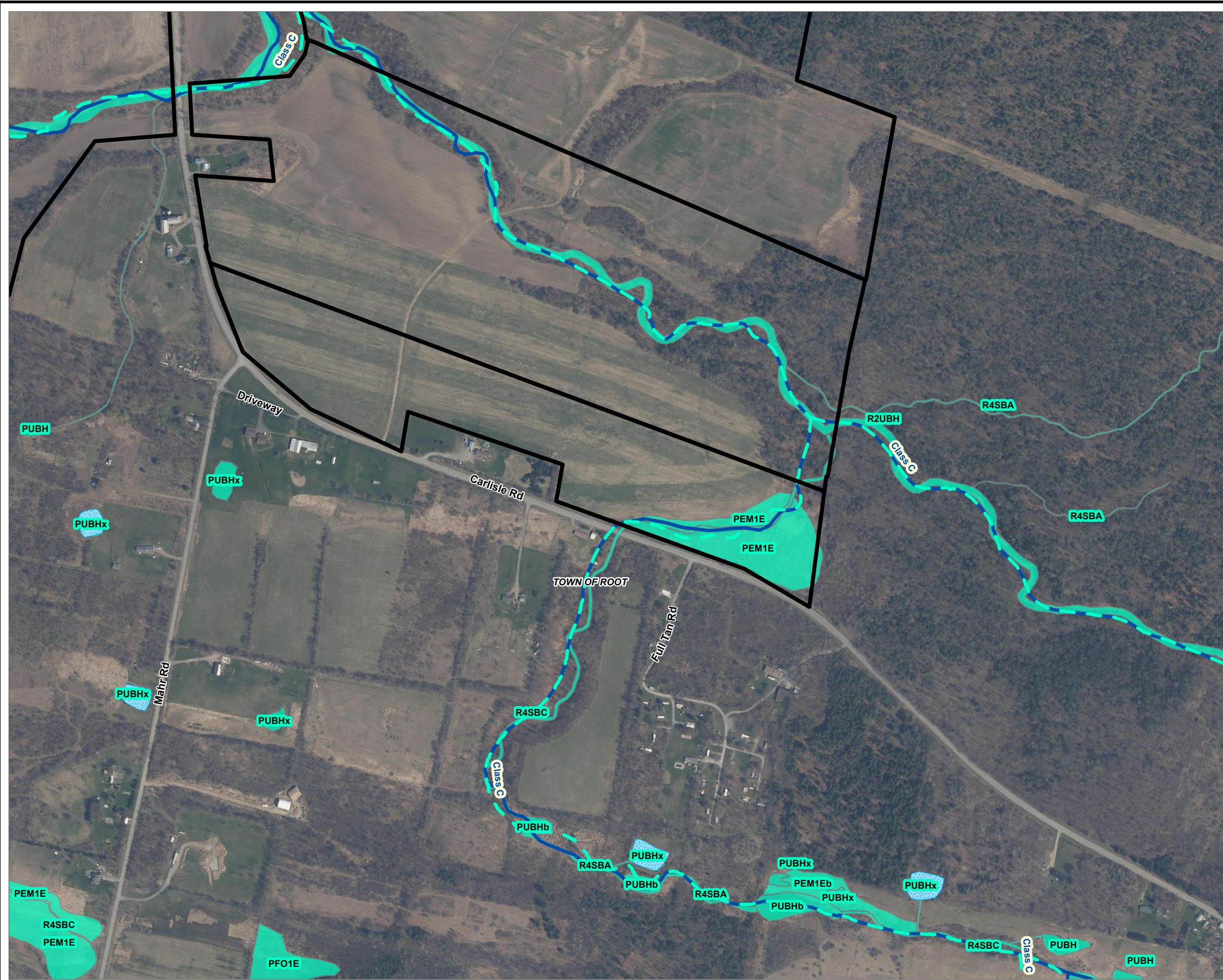


- LEGEND**
- FACILITY SITE
 - WATERBODIES (NHD)
 - WETLANDS (NYSDEC)
 - NYDEC WETLAND 100-FOOT ADJACENT AREA
 - STREAM (NYSDEC)
 - STREAM (NHD)
 - WETLANDS (NWI)
 - VILLAGE BOUNDARY
 - MUNICIPAL BOUNDARY
 - COUNTY BOUNDARY

NOTES:
 1. THIS FIGURE IS DESIGNED TO BE VIEWED OR PRINTED IN COLOR AT 11X17.
 BASE MAP: NYSGIS "LATEST ORTHOIMAGERY" 2021 ONLINE SERVICE LAYER.
 DATA SOURCES: SUNEAST, TRC, NYSGIS, NHD, NWI

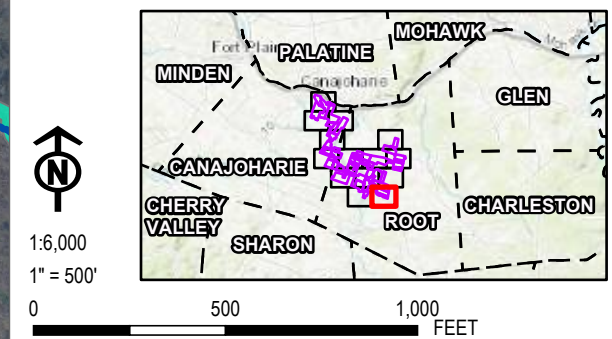


PROJECT: FLAT CREEK SOLAR TOWNS OF CANAJOHARIE AND ROOT MONTGOMERY COUNTY, NY	
TITLE: FEDERAL & STATE REGULATED WETLANDS & ADJACENT AREAS	
DRAWN BY: G. CORYELL	PROJ. NO.: 427281.2022.0000
CHECKED BY: R. BARBER	FIGURE 14-1 Sheet 13 of 14
APPROVED BY: E. SNYDER	
DATE: JUNE 2024	



- LEGEND**
-  FACILITY SITE
 -  WATERBODIES (NHD)
 -  WETLANDS (NYSDEC)
 -  NYDEC WETLAND 100-FOOT ADJACENT AREA
 -  STREAM (NYSDEC)
 -  STREAM (NHD)
 -  WETLANDS (NWI)
 -  VILLAGE BOUNDARY
 -  MUNICIPAL BOUNDARY
 -  COUNTY BOUNDARY

NOTES:
 1. THIS FIGURE IS DESIGNED TO BE VIEWED OR PRINTED IN COLOR AT 11X17.
 BASE MAP: NYSGIS "LATEST ORTHOIMAGERY" 2021 ONLINE SERVICE LAYER.
 DATA SOURCES: SUNEAST, TRC, NYSGIS, NHD, NWI



PROJECT: FLAT CREEK SOLAR TOWNS OF CANAJOHARIE AND ROOT MONTGOMERY COUNTY, NY	
TITLE: FEDERAL & STATE REGULATED WETLANDS & ADJACENT AREAS	
DRAWN BY: G. CORYELL	PROJ. NO.: 427281.2022.0000
CHECKED BY: R. BARBER	FIGURE 14-1 Sheet 14 of 14
APPROVED BY: E. SNYDER	
DATE: JUNE 2024	