

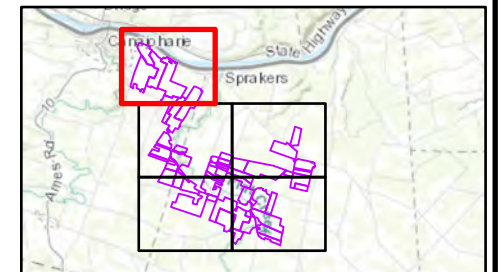
LEGEND

- · — · WATERBODIES (NHD)
- — — — WATERBODIES (NYSDEC)
- ▨ WETLANDS (NYSDEC)
- ▨ WETLANDS (NWI)
- FACILITY SITE
- TOWN BOUNDARY

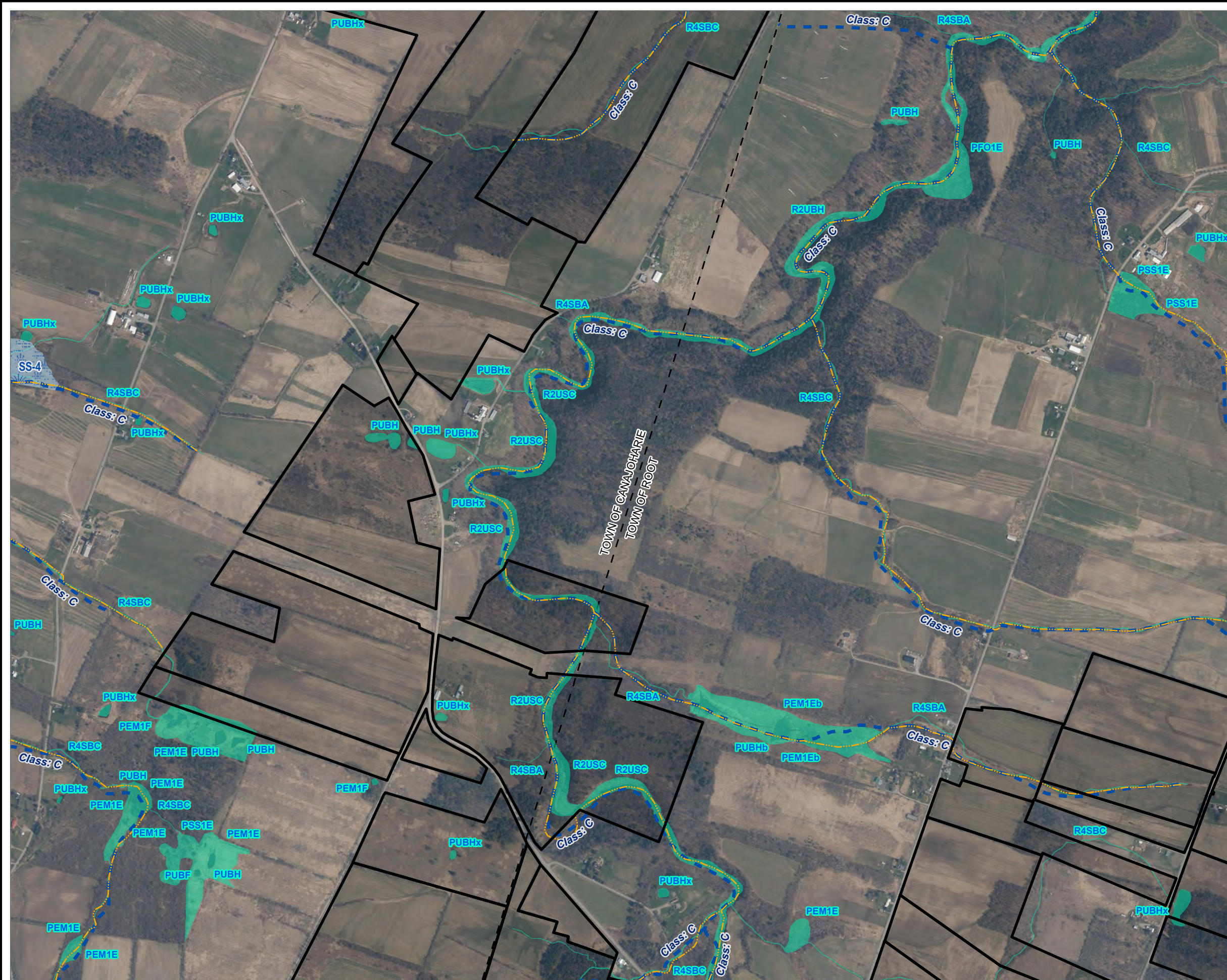
NOTES:
 1. THIS FIGURE IS DESIGNED TO BE VIEWED OR PRINTED IN COLOR AT 11X17.

BASE MAP: WEB MAP SERVICE FROM NY GIS GOV (2021).
 DATA SOURCES: TRC, NYSGIS, NWI, NYSDEC, USFWS, NHD, ESRI.

1:12,000
 1" = 1,000'
 0 1,000 2,000 FEET



PROJECT:		FLAT CREEK SOLAR TOWNS OF CANAJOHARIE AND ROOT MONTGOMERY COUNTY, NY	
TITLE:		NYSDEC & NWI MAPPED SURFACE WATERS	
DRAWN BY:	L. LILL	PROJ. NO.:	427281.2022.0000
CHECKED BY:	G. CORYELL	FIGURE 13-4 Sheet 1 of 5	
APPROVED BY:	S. KRANES		
DATE:	JUNE 2024		

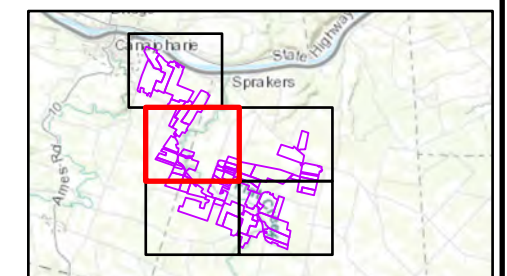


LEGEND

- WATERBODIES (NHD)
- - - WATERBODIES (NYSDEC)
- WETLANDS (NYSDEC)
- WETLANDS (NWI)
- FACILITY SITE
- TOWN BOUNDARY

NOTES:
 1. THIS FIGURE IS DESIGNED TO BE VIEWED OR PRINTED IN COLOR AT 11X17.

BASE MAP: WEB MAP SERVICE FROM NY GIS GOV (2021).
 DATA SOURCES: TRC, NYSGIS, NWI, NYSDEC, USFWS, NHD, ESRI.



1:12,000
 1" = 1,000'



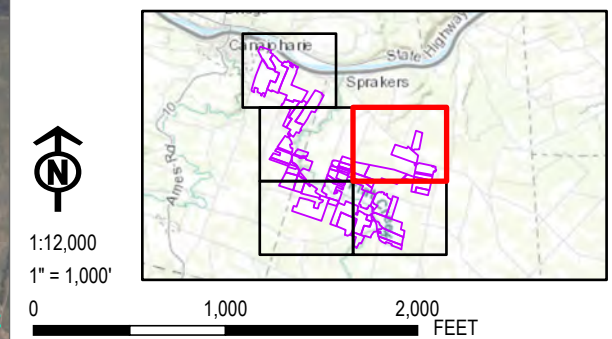
PROJECT:		FLAT CREEK SOLAR
TOWNS OF CANAJOHARIE AND ROOT		
MONTGOMERY COUNTY, NY		
TITLE:		
NYSDEC & NWI MAPPED SURFACE WATERS		
DRAWN BY:	L. LILL	PROJ. NO.: 427281.2022.0000
CHECKED BY:	G. CORYELL	FIGURE 13-4 Sheet 2 of 5
APPROVED BY:	S. KRANES	
DATE:	JUNE 2024	



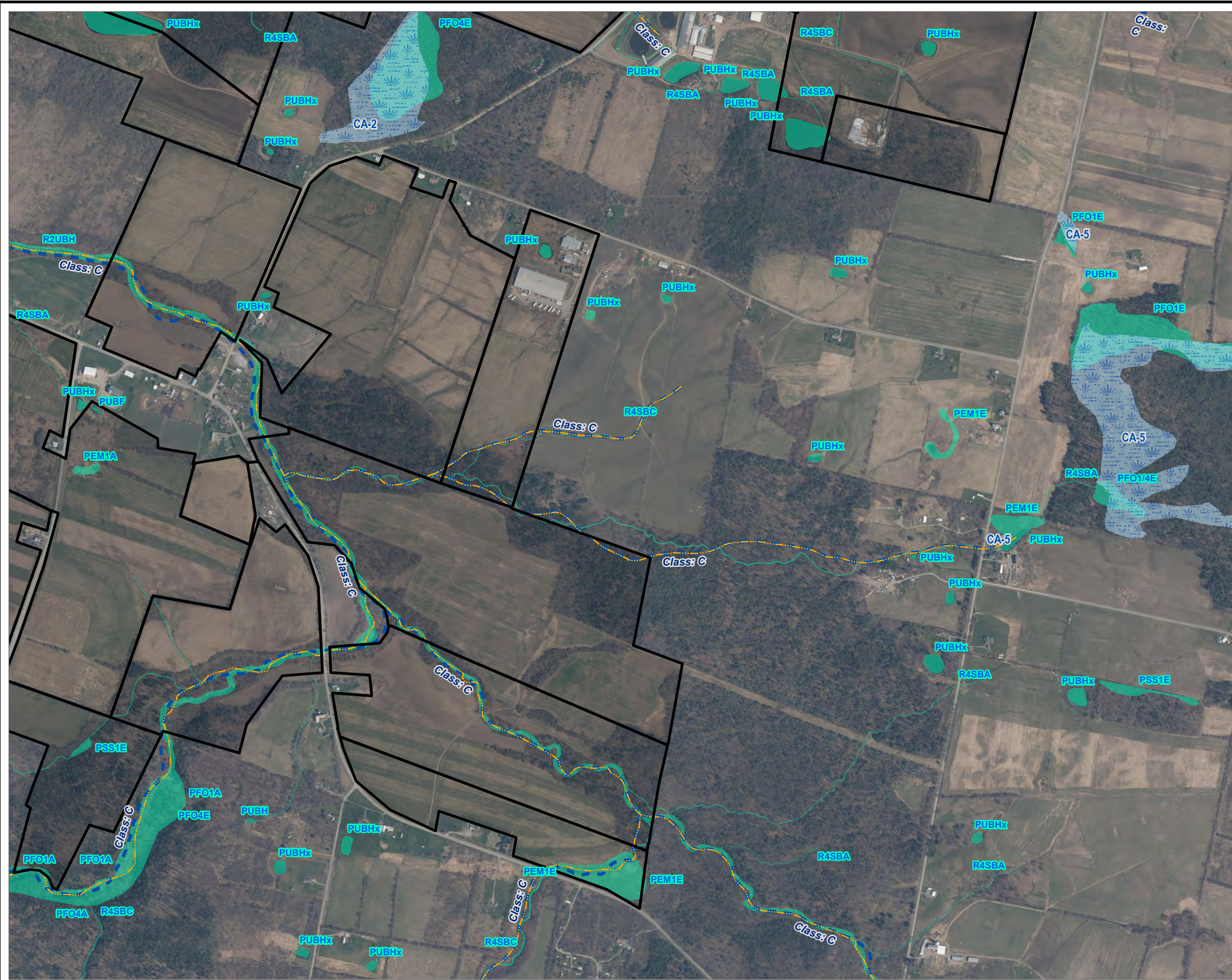
- LEGEND**
- - - WATERBODIES (NHD)
 - - - WATERBODIES (NYSDEC)
 - ▨ WETLANDS (NYSDEC)
 - ▨ WETLANDS (NWI)
 - FACILITY SITE
 - TOWN BOUNDARY

NOTES:
 1. THIS FIGURE IS DESIGNED TO BE VIEWED OR PRINTED IN COLOR AT 11X17.

BASE MAP: WEB MAP SERVICE FROM NY GIS GOV (2021).
 DATA SOURCES: TRC, NYSGIS, NWI, NYSDEC, USFWS, NHD, ESRI.



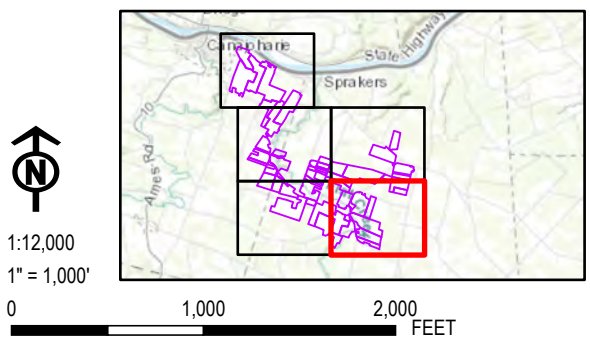
PROJECT:		FLAT CREEK SOLAR	
		TOWNS OF CANAJOHARIE AND ROOT	
		MONTGOMERY COUNTY, NY	
TITLE:			
NYSDEC & NWI MAPPED SURFACE WATERS			
DRAWN BY:	L. LILL	PROJ. NO.:	427281.2022.0000
CHECKED BY:	G. CORYELL	FIGURE 13-4 Sheet 3 of 5	
APPROVED BY:	S. KRANES		
DATE:	JUNE 2024		



- LEGEND**
- WATERBODIES (NHD)
 - WATERBODIES (NYSDEC)
 - WETLANDS (NYSDEC)
 - WETLANDS (NWI)
 - FACILITY SITE
 - TOWN BOUNDARY

NOTES:
 1. THIS FIGURE IS DESIGNED TO BE VIEWED OR PRINTED IN COLOR AT 11X17.

BASE MAP: WEB MAP SERVICE FROM NY GIS GOV (2021).
 DATA SOURCES: TRC, NYSGIS, NWI, NYSDEC, USFWS, NHD, ESRI.



PROJECT:		FLAT CREEK SOLAR	
		TOWNS OF CANAJOHARIE AND ROOT	
		MONTGOMERY COUNTY, NY	
TITLE:			
NYSDEC & NWI MAPPED SURFACE WATERS			
DRAWN BY:	L. LILL	PROJ. NO.:	427281.2022.0000
CHECKED BY:	G. CORYELL	FIGURE 13-4 Sheet 5 of 5	
APPROVED BY:	S. KRANES		
DATE:	JUNE 2024		