



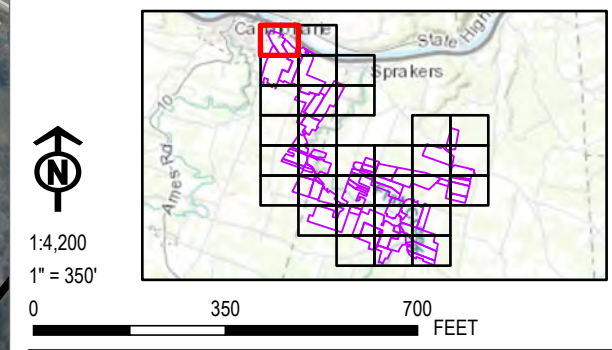
**LEGEND**

- ▲ EXISTING CULVERT
- STREAM PLOT
- DELINEATED STREAM - JURISDICTIONAL STATUS**
- NON-JURISDICTIONAL
- USACE
- FACILITY SITE
- SURVEYED AREA
- TOWN BOUNDARY

**NOTES:**

1. THIS FIGURE IS DESIGNED TO BE VIEWED OR PRINTED IN COLOR AT 11X17.



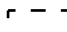
BASE MAP: ESRI "USGS TOPO BASEMAP" 2021 ONLINE SERVICE LAYER.  
DATA SOURCES: TRC, SUNEAST, NYSGIS, ESRI.



PROJECT:		<b>FLAT CREEK SOLAR</b>	
		TOWNS OF CANAJOHARIE AND ROOT	
		MONTGOMERY COUNTY, NY	
TITLE:		<b>DELINEATED SURFACE WATERS</b>	
DRAWN BY:	R. BARBER	PROJ. NO.:	427281.2022.0000
CHECKED BY:	G. CORYELL	<b>FIGURE 13-3</b> Sheet 1 of 31	
APPROVED BY:	S. KRANES		
DATE:	JUNE 2024		

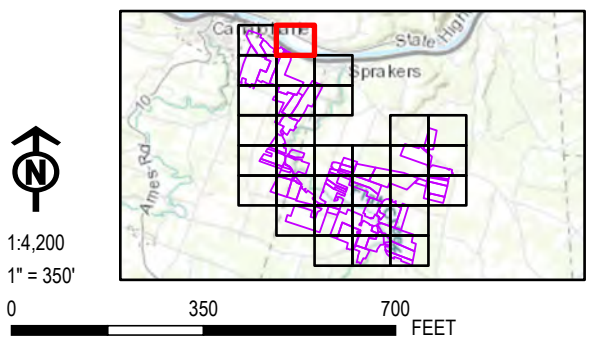




- LEGEND**
-  FACILITY SITE
  -  SURVEYED AREA
  -  TOWN BOUNDARY

**NOTES:**  
 1. THIS FIGURE IS DESIGNED TO BE VIEWED OR PRINTED IN COLOR AT 11X17.

BASE MAP: ESRI "USGS TOPO BASEMAP" 2021 ONLINE SERVICE LAYER.  
 DATA SOURCES: TRC, SUNEAST, NYSGIS, ESRI.



PROJECT:		<b>FLAT CREEK SOLAR</b>	
		TOWNS OF CANAJOHARIE AND ROOT	
		MONTGOMERY COUNTY, NY	
TITLE:			
<b>DELINEATED SURFACE WATERS</b>			
DRAWN BY:	R. BARBER	PROJ. NO.:	427281.2022.0000
CHECKED BY:	G. CORYELL	<b>FIGURE 13-3</b> Sheet 2 of 31	
APPROVED BY:	S. KRANES		
DATE:	JUNE 2024		





**LEGEND**

- ▲ EXISTING CULVERT
- STREAM PLOT
- DELINEATED STREAM - JURISDICTIONAL STATUS**
- NON-JURISDICTIONAL
- USACE
- DELINEATED SURFACE WATER
- ▭ FACILITY SITE
- ▭ SURVEYED AREA
- ▭ TOWN BOUNDARY

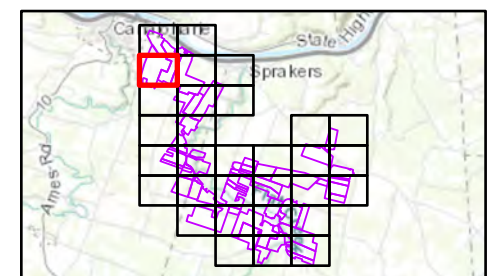
**NOTES:**

1. THIS FIGURE IS DESIGNED TO BE VIEWED OR PRINTED IN COLOR AT 11X17.

BASE MAP: ESRI "USGS TOPO BASEMAP" 2021 ONLINE SERVICE LAYER.  
DATA SOURCES: TRC, SUNEAST, NYSGIS, ESRI.



1:4,200  
1" = 350'



PROJECT: **FLAT CREEK SOLAR**  
TOWNS OF CANAJOHARIE AND ROOT  
MONTGOMERY COUNTY, NY

TITLE: **DELINEATED SURFACE WATERS**

DRAWN BY: R. BARBER	PROJ. NO.: 427281.2022.0000
CHECKED BY: G. CORYELL	<b>FIGURE 13-3</b> Sheet 3 of 31
APPROVED BY: S. KRANES	
DATE: JUNE 2024	

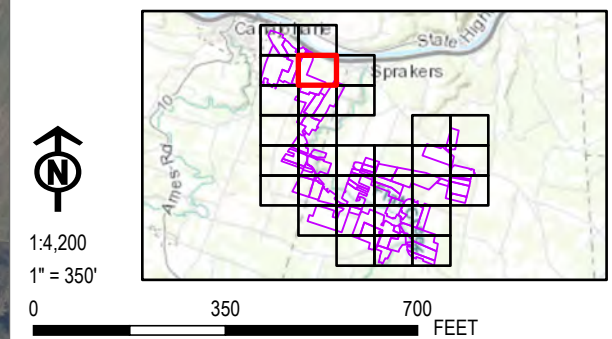




- LEGEND**
- STREAM PLOT
  - DELINEATED STREAM - JURISDICTIONAL STATUS
  - USACE
  - FACILITY SITE
  - SURVEYED AREA
  - TOWN BOUNDARY

**NOTES:**  
 1. THIS FIGURE IS DESIGNED TO BE VIEWED OR PRINTED IN COLOR AT 11X17.

BASE MAP: ESRI "USGS TOPO BASEMAP" 2021 ONLINE SERVICE LAYER.  
 DATA SOURCES: TRC, SUNEAST, NYSGIS, ESRI.



PROJECT:		<b>FLAT CREEK SOLAR</b>	
		TOWNS OF CANAJOHARIE AND ROOT	
		MONTGOMERY COUNTY, NY	
TITLE:		<b>DELINEATED SURFACE WATERS</b>	
DRAWN BY:	R. BARBER	PROJ. NO.:	427281.2022.0000
CHECKED BY:	G. CORYELL	<b>FIGURE 13-3</b> Sheet 4 of 31	
APPROVED BY:	S. KRANES		
DATE:	JUNE 2024		

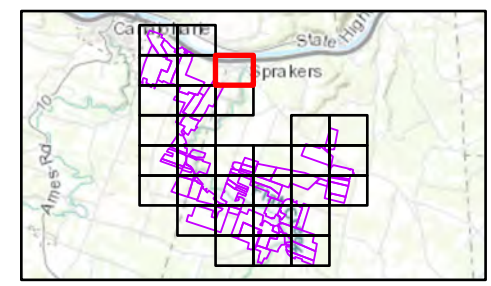




- LEGEND**
- FACILITY SITE
  - SURVEYED AREA
  - TOWN BOUNDARY

**NOTES:**  
 1. THIS FIGURE IS DESIGNED TO BE VIEWED OR PRINTED IN COLOR AT 11X17.

BASE MAP: ESRI "USGS TOPO BASEMAP" 2021 ONLINE SERVICE LAYER.  
 DATA SOURCES: TRC, SUNEAST, NYSGIS, ESRI.





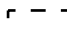
1:4,200  
 1" = 350'



<b>PROJECT:</b>		<b>FLAT CREEK SOLAR TOWNS OF CANAJOHARIE AND ROOT MONTGOMERY COUNTY, NY</b>
<b>TITLE:</b>		<b>DELINEATED SURFACE WATERS</b>
DRAWN BY:	R. BARBER	PROJ. NO.: 427281.2022.0000
CHECKED BY:	G. CORYELL	<b>FIGURE 13-3</b> Sheet 5 of 31
APPROVED BY:	S. KRANES	
DATE:	JUNE 2024	

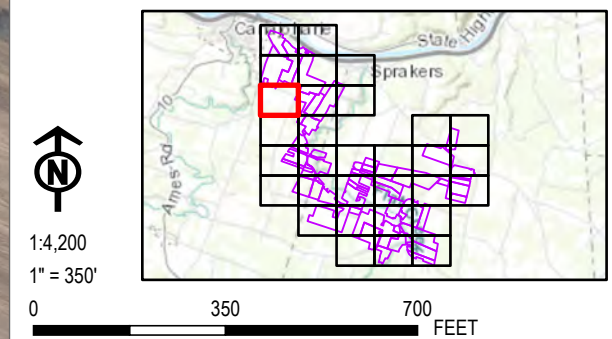




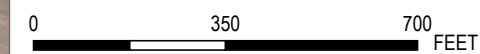
- LEGEND**
-  FACILITY SITE
  -  SURVEYED AREA
  -  TOWN BOUNDARY

**NOTES:**  
 1. THIS FIGURE IS DESIGNED TO BE VIEWED OR PRINTED IN COLOR AT 11X17.

BASE MAP: ESRI "USGS TOPO BASEMAP" 2021 ONLINE SERVICE LAYER.  
 DATA SOURCES: TRC, SUNEAST, NYSGIS, ESRI.



1:4,200  
 1" = 350'



PROJECT:		<b>FLAT CREEK SOLAR</b>	
		<b>TOWNS OF CANAJOHARIE AND ROOT</b>	
		<b>MONTGOMERY COUNTY, NY</b>	
TITLE:		<b>DELINEATED SURFACE WATERS</b>	
DRAWN BY:	R. BARBER	PROJ. NO.:	427281.2022.0000
CHECKED BY:	G. CORYELL	<b>FIGURE 13-3</b> Sheet 6 of 31	
APPROVED BY:	S. KRANES		
DATE:	JUNE 2024		





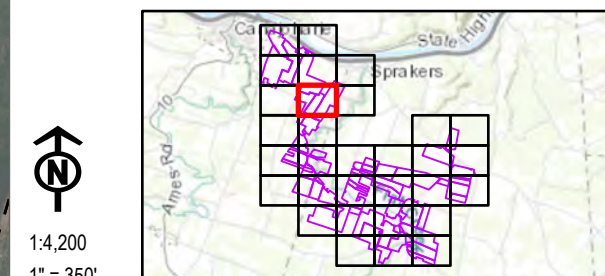
**LEGEND**

- EXISTING CULVERT
- STREAM PLOT
- DELINEATED STREAM - JURISDICTIONAL STATUS**
- NON-JURISDICTIONAL
- USACE
- DELINEATED SURFACE WATER
- FACILITY SITE
- SURVEYED AREA
- TOWN BOUNDARY

**NOTES:**

1. THIS FIGURE IS DESIGNED TO BE VIEWED OR PRINTED IN COLOR AT 11X17.

BASE MAP: ESRI "USGS TOPO BASEMAP" 2021 ONLINE SERVICE LAYER.  
DATA SOURCES: TRC, SUNEAST, NYSGIS, ESRI.



1:4,200  
1" = 350'



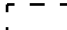


PROJECT:		<b>FLAT CREEK SOLAR</b>	
		TOWNS OF CANAJOHARIE AND ROOT	
		MONTGOMERY COUNTY, NY	
TITLE:		<b>DELINEATED SURFACE WATERS</b>	
DRAWN BY:	R. BARBER	PROJ. NO.:	427281.2022.0000
CHECKED BY:	G. CORYELL	<b>FIGURE 13-3</b> Sheet 7 of 31	
APPROVED BY:	S. KRANES		
DATE:	JUNE 2024		





**LEGEND**

-  FACILITY SITE
-  SURVEYED AREA
-  TOWN BOUNDARY

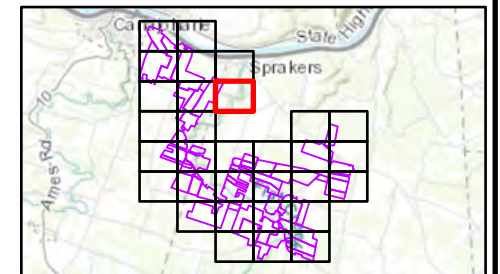
**NOTES:**

1. THIS FIGURE IS DESIGNED TO BE VIEWED OR PRINTED IN COLOR AT 11X17.

BASE MAP: ESRI "USGS TOPO BASEMAP" 2021 ONLINE SERVICE LAYER.  
DATA SOURCES: TRC, SUNEAST, NYSGIS, ESRI.





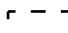
1:4,200  
1" = 350'



PROJECT:		<b>FLAT CREEK SOLAR</b>	
		<b>TOWNS OF CANAJOHARIE AND ROOT</b>	
		<b>MONTGOMERY COUNTY, NY</b>	
TITLE:		<b>DELINEATED SURFACE WATERS</b>	
DRAWN BY:	R. BARBER	PROJ. NO.:	427281.2022.0000
CHECKED BY:	G. CORYELL	<b>FIGURE 13-3</b> Sheet 8 of 31	
APPROVED BY:	S. KRANES		
DATE:	JUNE 2024		

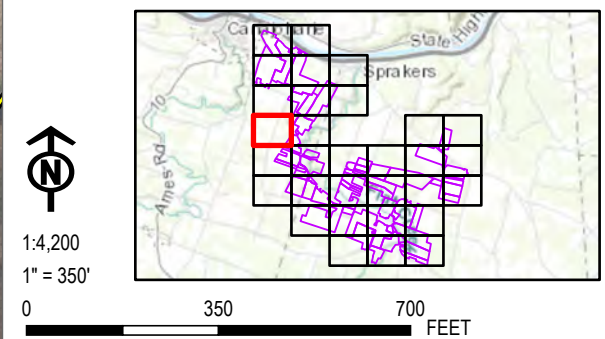




- LEGEND**
-  FACILITY SITE
  -  SURVEYED AREA
  -  TOWN BOUNDARY

**NOTES:**  
 1. THIS FIGURE IS DESIGNED TO BE VIEWED OR PRINTED IN COLOR AT 11X17.

BASE MAP: ESRI "USGS TOPO BASEMAP" 2021 ONLINE SERVICE LAYER.  
 DATA SOURCES: TRC, SUNEAST, NYSGIS, ESRI.



1:4,200  
 1" = 350'




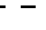


PROJECT:		<b>FLAT CREEK SOLAR</b>	
		TOWNS OF CANAJOHARIE AND ROOT	
		MONTGOMERY COUNTY, NY	
TITLE:			
<b>DELINEATED SURFACE WATERS</b>			
DRAWN BY:	R. BARBER	PROJ. NO.:	427281.2022.0000
CHECKED BY:	G. CORYELL	<b>FIGURE 13-3</b> Sheet 9 of 31	
APPROVED BY:	S. KRANES		
DATE:	JUNE 2024		





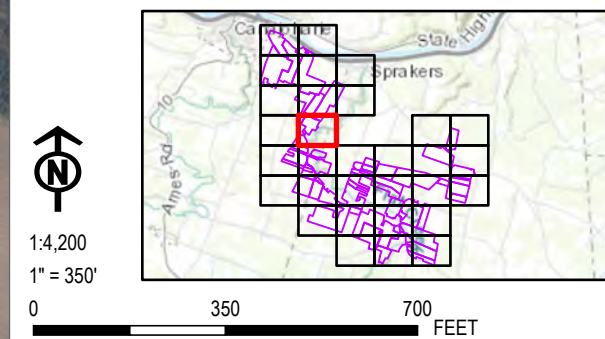
**LEGEND**

-  EXISTING CULVERT
-  FACILITY SITE
-  SURVEYED AREA
-  TOWN BOUNDARY

**NOTES:**

1. THIS FIGURE IS DESIGNED TO BE VIEWED OR PRINTED IN COLOR AT 11X17.

BASE MAP: ESRI "USGS TOPO BASEMAP" 2021 ONLINE SERVICE LAYER.  
DATA SOURCES: TRC, SUNEAST, NYSGIS, ESRI.



PROJECT:		<b>FLAT CREEK SOLAR</b>	
		<b>TOWNS OF CANAJOHARIE AND ROOT</b>	
		<b>MONTGOMERY COUNTY, NY</b>	
TITLE:		<b>DELINEATED SURFACE WATERS</b>	
DRAWN BY:	R. BARBER	PROJ. NO.:	427281.2022.0000
CHECKED BY:	G. CORYELL	<b>FIGURE 13-3</b> Sheet 10 of 31	
APPROVED BY:	S. KRANES		
DATE:	JUNE 2024		





**LEGEND**

- STREAM PLOT
- DELINEATED STREAM - JURISDICTIONAL STATUS**
- USACE
- FACILITY SITE
- SURVEYED AREA
- TOWN BOUNDARY

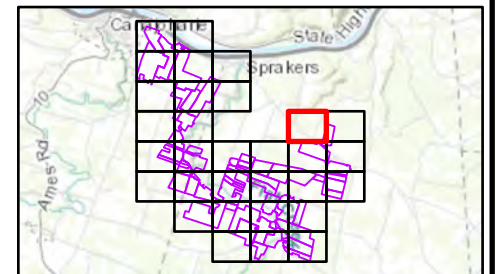
**NOTES:**

1. THIS FIGURE IS DESIGNED TO BE VIEWED OR PRINTED IN COLOR AT 11X17.

BASE MAP: ESRI "USGS TOPO BASEMAP" 2021 ONLINE SERVICE LAYER.  
DATA SOURCES: TRC, SUNEAST, NYSGIS, ESRI.



1:4,200  
1" = 350'



<b>PROJECT:</b>		<b>FLAT CREEK SOLAR TOWNS OF CANAJOHARIE AND ROOT MONTGOMERY COUNTY, NY</b>
<b>TITLE:</b>		<b>DELINEATED SURFACE WATERS</b>
DRAWN BY:	R. BARBER	PROJ. NO.: 427281.2022.0000
CHECKED BY:	G. CORYELL	<b>FIGURE 13-3</b> Sheet 11 of 31
APPROVED BY:	S. KRANES	
DATE:	JUNE 2024	

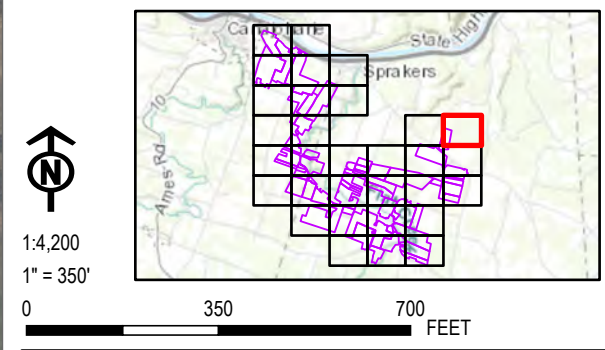




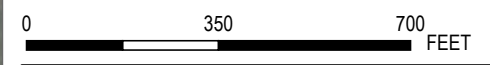
- LEGEND**
- STREAM PLOT
  - DELINEATED STREAM - JURISDICTIONAL STATUS**
  - USACE
  - ▭ FACILITY SITE
  - ▭ SURVEYED AREA
  - - - TOWN BOUNDARY

**NOTES:**  
 1. THIS FIGURE IS DESIGNED TO BE VIEWED OR PRINTED IN COLOR AT 11X17.

BASE MAP: ESRI "USGS TOPO BASEMAP" 2021 ONLINE SERVICE LAYER.  
 DATA SOURCES: TRC, SUNEAST, NYSGIS, ESRI.



1:4,200  
 1" = 350'



<b>PROJECT:</b>		<b>FLAT CREEK SOLAR</b>
		<b>TOWNS OF CANAJOHARIE AND ROOT</b>
		<b>MONTGOMERY COUNTY, NY</b>
<b>TITLE:</b>		<b>DELINEATED SURFACE WATERS</b>
<b>DRAWN BY:</b>	R. BARBER	<b>PROJ. NO.:</b> 427281.2022.0000
<b>CHECKED BY:</b>	G. CORYELL	<b>FIGURE 13-3</b> Sheet 12 of 31
<b>APPROVED BY:</b>	S. KRANES	
<b>DATE:</b>	JUNE 2024	





**LEGEND**

- FACILITY SITE
- SURVEYED AREA
- TOWN BOUNDARY

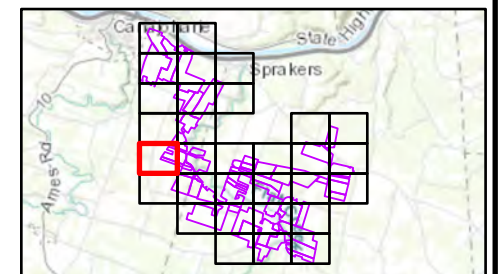
**NOTES:**

1. THIS FIGURE IS DESIGNED TO BE VIEWED OR PRINTED IN COLOR AT 11X17.

BASE MAP: ESRI "USGS TOPO BASEMAP" 2021 ONLINE SERVICE LAYER.  
 DATA SOURCES: TRC, SUNEAST, NYSGIS, ESRI.



1:4,200  
 1" = 350'



<b>PROJECT:</b>		<b>FLAT CREEK SOLAR TOWNS OF CANAJOHARIE AND ROOT MONTGOMERY COUNTY, NY</b>
<b>TITLE:</b>		<b>DELINEATED SURFACE WATERS</b>
<small>DRAWN BY:</small>	R. BARBER	<small>PROJ. NO.:</small> 427281.2022.0000
<small>CHECKED BY:</small>	G. CORYELL	<b>FIGURE 13-3</b> Sheet 13 of 31
<small>APPROVED BY:</small>	S. KRANES	
<small>DATE:</small>	JUNE 2024	





**LEGEND**

- ▲ EXISTING CULVERT
- STREAM PLOT
- DELINEATED STREAM - JURISDICTIONAL STATUS**
- NON-JURISDICTIONAL
- USACE
- USACE/ORES
- DELINEATED SURFACE WATER
- 50-FOOT REGULATORY STREAM BUFFER
- FACILITY SITE
- SURVEYED AREA
- TOWN BOUNDARY

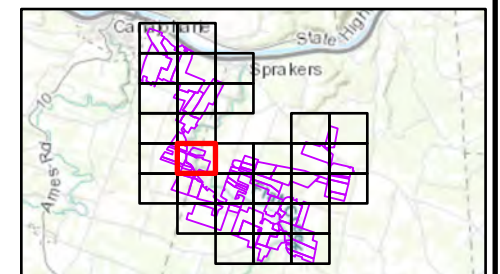
**NOTES:**

1. THIS FIGURE IS DESIGNED TO BE VIEWED OR PRINTED IN COLOR AT 11X17.

BASE MAP: ESRI "USGS TOPO BASEMAP" 2021 ONLINE SERVICE LAYER.  
DATA SOURCES: TRC, SUNEAST, NYSGIS, ESRI.



1:4,200  
1" = 350'



<b>PROJECT:</b>		<b>FLAT CREEK SOLAR TOWNS OF CANAJOHARIE AND ROOT MONTGOMERY COUNTY, NY</b>	
<b>TITLE:</b>		<b>DELINEATED SURFACE WATERS</b>	
DRAWN BY:	R. BARBER	PROJ. NO.:	427281.2022.0000
CHECKED BY:	G. CORYELL	<b>FIGURE 13-3</b> Sheet 14 of 31	
APPROVED BY:	S. KRANES		
DATE:	JUNE 2024		





**LEGEND**

- ▲ EXISTING CULVERT
- STREAM PLOT
- DELINEATED STREAM - JURISDICTIONAL STATUS**
- USACE
- DELINEATED SURFACE WATER
- FACILITY SITE
- SURVEYED AREA
- TOWN BOUNDARY

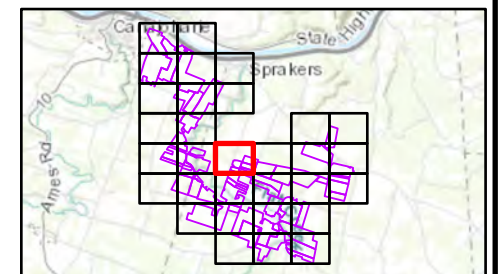
**NOTES:**

1. THIS FIGURE IS DESIGNED TO BE VIEWED OR PRINTED IN COLOR AT 11X17.

BASE MAP: ESRI "USGS TOPO BASEMAP" 2021 ONLINE SERVICE LAYER.  
DATA SOURCES: TRC, SUNEAST, NYSGIS, ESRI.



1:4,200  
1" = 350'



<b>PROJECT:</b>		<b>FLAT CREEK SOLAR TOWNS OF CANAJOHARIE AND ROOT MONTGOMERY COUNTY, NY</b>	
<b>TITLE:</b>		<b>DELINEATED SURFACE WATERS</b>	
DRAWN BY:	R. BARBER	PROJ. NO.:	427281.2022.0000
CHECKED BY:	G. CORYELL	<b>FIGURE 13-3</b> <i>Sheet 15 of 31</i>	
APPROVED BY:	S. KRANES		
DATE:	JUNE 2024		





**LEGEND**

- ▲ EXISTING CULVERT
- STREAM PLOT
- DELINEATED STREAM - JURISDICTIONAL STATUS**
- USACE
- ▭ FACILITY SITE
- ▭ SURVEYED AREA
- - - TOWN BOUNDARY

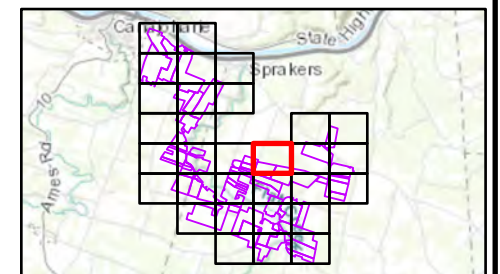
**NOTES:**

1. THIS FIGURE IS DESIGNED TO BE VIEWED OR PRINTED IN COLOR AT 11X17.

BASE MAP: ESRI "USGS TOPO BASEMAP" 2021 ONLINE SERVICE LAYER.  
 DATA SOURCES: TRC, SUNEAST, NYSGIS, ESRI.



1:4,200  
 1" = 350'



<b>PROJECT:</b>		<b>FLAT CREEK SOLAR</b>	
		<b>TOWNS OF CANAJOHARIE AND ROOT</b>	
		<b>MONTGOMERY COUNTY, NY</b>	
<b>TITLE:</b>		<b>DELINEATED SURFACE WATERS</b>	
<b>DRAWN BY:</b>	R. BARBER	<b>PROJ. NO.:</b>	427281.2022.0000
<b>CHECKED BY:</b>	G. CORYELL	<b>FIGURE 13-3</b> Sheet 16 of 31	
<b>APPROVED BY:</b>	S. KRANES		
<b>DATE:</b>	JUNE 2024		





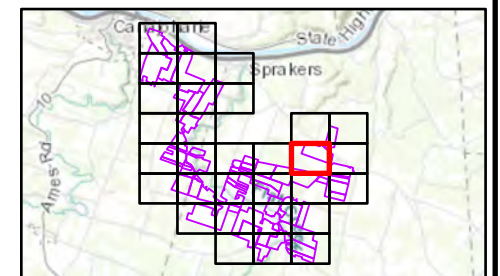
**LEGEND**

- ▲ EXISTING CULVERT
- STREAM PLOT
- DELINEATED STREAM - JURISDICTIONAL STATUS**
- NON-JURISDICTIONAL
- USACE
- DELINEATED SURFACE WATER
- ▭ FACILITY SITE
- ▭ SURVEYED AREA
- ▭ TOWN BOUNDARY

**NOTES:**

1. THIS FIGURE IS DESIGNED TO BE VIEWED OR PRINTED IN COLOR AT 11X17.

BASE MAP: ESRI "USGS TOPO BASEMAP" 2021 ONLINE SERVICE LAYER.  
 DATA SOURCES: TRC, SUNEAST, NYSGIS, ESRI.



1:4,200  
 1" = 350'



PROJECT: **FLAT CREEK SOLAR**  
 TOWNS OF CANAJOHARIE AND ROOT  
 MONTGOMERY COUNTY, NY

TITLE: **DELINEATED SURFACE WATERS**

DRAWN BY: R. BARBER	PROJ. NO.: 427281.2022.0000
CHECKED BY: G. CORYELL	<b>FIGURE 13-3</b> Sheet 17 of 31
APPROVED BY: S. KRANES	
DATE: JUNE 2024	





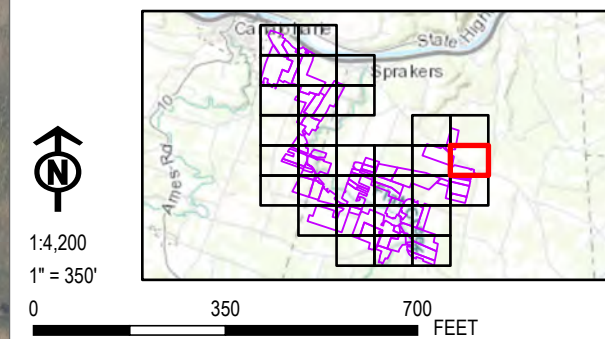
**LEGEND**

- ▲ EXISTING CULVERT
- STREAM PLOT
- DELINEATED STREAM - JURISDICTIONAL STATUS**
- NON-JURISDICTIONAL
- USACE
- DELINEATED SURFACE WATER
- FACILITY SITE
- SURVEYED AREA
- TOWN BOUNDARY

**NOTES:**

1. THIS FIGURE IS DESIGNED TO BE VIEWED OR PRINTED IN COLOR AT 11X17.

BASE MAP: ESRI "USGS TOPO BASEMAP" 2021 ONLINE SERVICE LAYER.  
DATA SOURCES: TRC, SUNEAST, NYSGIS, ESRI.



1:4,200  
1" = 350'



<b>PROJECT:</b>		<b>FLAT CREEK SOLAR TOWNS OF CANAJOHARIE AND ROOT MONTGOMERY COUNTY, NY</b>	
<b>TITLE:</b>		<b>DELINEATED SURFACE WATERS</b>	
DRAWN BY:	R. BARBER	PROJ. NO.:	427281.2022.0000
CHECKED BY:	G. CORYELL	<b>FIGURE 13-3</b> <i>Sheet 18 of 31</i>	
APPROVED BY:	S. KRANES		
DATE:	JUNE 2024		





**LEGEND**

**DELINEATED STREAM - JURISDICTIONAL STATUS**

NON-JURISDICTIONAL

FACILITY SITE

SURVEYED AREA

TOWN BOUNDARY

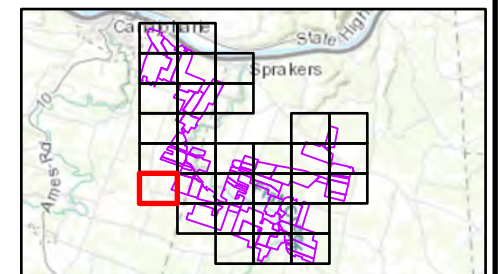
**NOTES:**

1. THIS FIGURE IS DESIGNED TO BE VIEWED OR PRINTED IN COLOR AT 11X17.

BASE MAP: ESRI "USGS TOPO BASEMAP" 2021 ONLINE SERVICE LAYER.  
DATA SOURCES: TRC, SUNEAST, NYSGIS, ESRI.

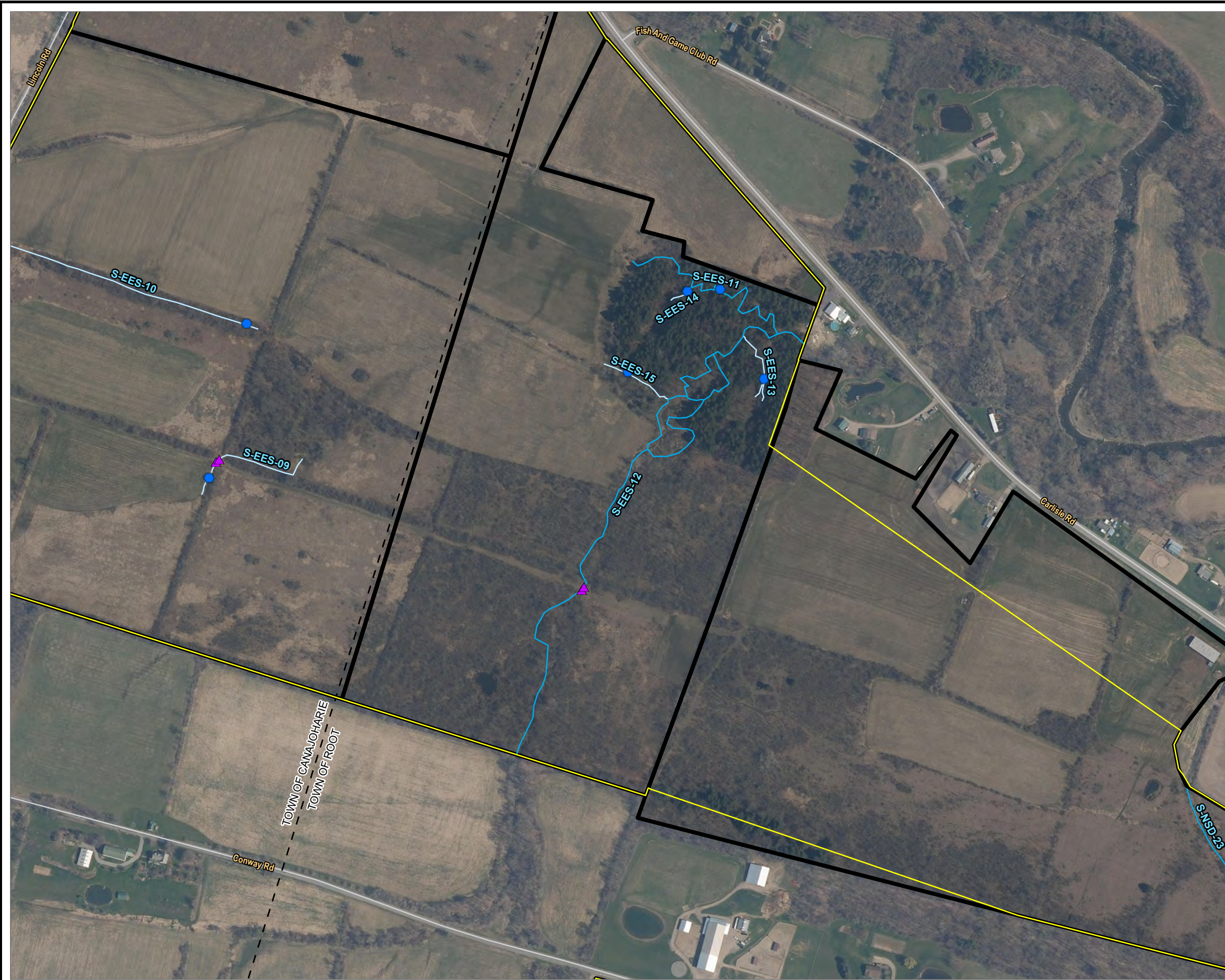


1:4,200  
1" = 350'



PROJECT:		<b>FLAT CREEK SOLAR</b>	
		TOWNS OF CANAJOHARIE AND ROOT	
		MONTGOMERY COUNTY, NY	
TITLE:		<b>DELINEATED SURFACE WATERS</b>	
DRAWN BY:	R. BARBER	PROJ. NO.:	427281.2022.0000
CHECKED BY:	G. CORYELL	<b>FIGURE 13-3</b> Sheet 19 of 31	
APPROVED BY:	S. KRANES		
DATE:	JUNE 2024		





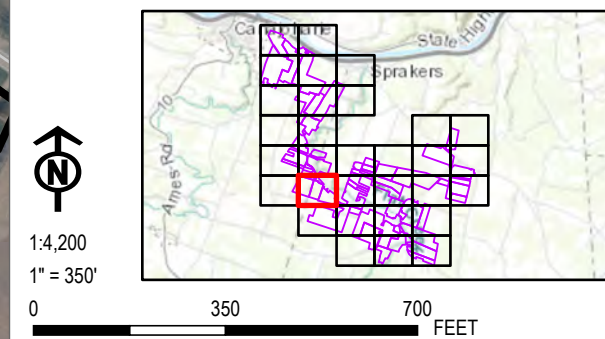
**LEGEND**

- ▲ EXISTING CULVERT
- STREAM PLOT
- DELINEATED STREAM - JURISDICTIONAL STATUS**
- NON-JURISDICTIONAL
- USACE
- FACILITY SITE
- SURVEYED AREA
- TOWN BOUNDARY

**NOTES:**

1. THIS FIGURE IS DESIGNED TO BE VIEWED OR PRINTED IN COLOR AT 11X17.

BASE MAP: ESRI "USGS TOPO BASEMAP" 2021 ONLINE SERVICE LAYER.  
DATA SOURCES: TRC, SUNEAST, NYSGIS, ESRI.



PROJECT: **FLAT CREEK SOLAR**  
TOWNS OF CANAJOHARIE AND ROOT  
MONTGOMERY COUNTY, NY

TITLE: **DELINEATED SURFACE WATERS**

DRAWN BY: R. BARBER	PROJ. NO.: 427281.2022.0000
CHECKED BY: G. CORYELL	<b>FIGURE 13-3</b> Sheet 20 of 31
APPROVED BY: S. KRANES	
DATE: JUNE 2024	





**LEGEND**

- EXISTING CULVERT
- STREAM PLOT
- DELINEATED STREAM - JURISDICTIONAL STATUS**
- USACE
- USACE/ORES
- DELINEATED SURFACE WATER
- 50-FOOT REGULATORY STREAM BUFFER
- FACILITY SITE
- SURVEYED AREA
- TOWN BOUNDARY

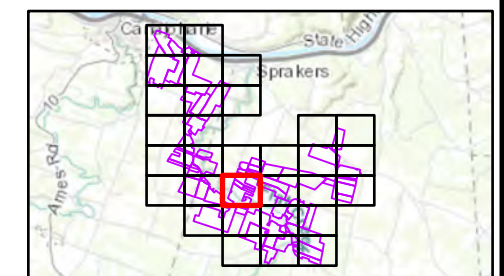
**NOTES:**

1. THIS FIGURE IS DESIGNED TO BE VIEWED OR PRINTED IN COLOR AT 11X17.

BASE MAP: ESRI "USGS TOPO BASEMAP" 2021 ONLINE SERVICE LAYER.  
DATA SOURCES: TRC, SUNEAST, NYSGIS, ESRI.



1:4,200  
1" = 350'



PROJECT:		<b>FLAT CREEK SOLAR</b>	
		TOWNS OF CANAJOHARIE AND ROOT	
		MONTGOMERY COUNTY, NY	
TITLE:			
<b>DELINEATED SURFACE WATERS</b>			
DRAWN BY:	R. BARBER	PROJ. NO.:	427281.2022.0000
CHECKED BY:	G. CORYELL	<b>FIGURE 13-3</b> Sheet 21 of 31	
APPROVED BY:	S. KRANES		
DATE:	JUNE 2024		





**LEGEND**

- ▲ EXISTING CULVERT
- STREAM PLOT
- DELINEATED STREAM - JURISDICTIONAL STATUS**
- USACE
- FACILITY SITE
- SURVEYED AREA
- TOWN BOUNDARY

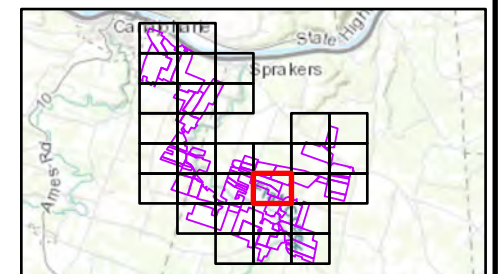
**NOTES:**

1. THIS FIGURE IS DESIGNED TO BE VIEWED OR PRINTED IN COLOR AT 11X17.

BASE MAP: ESRI "USGS TOPO BASEMAP" 2021 ONLINE SERVICE LAYER.  
DATA SOURCES: TRC, SUNEAST, NYSGIS, ESRI.

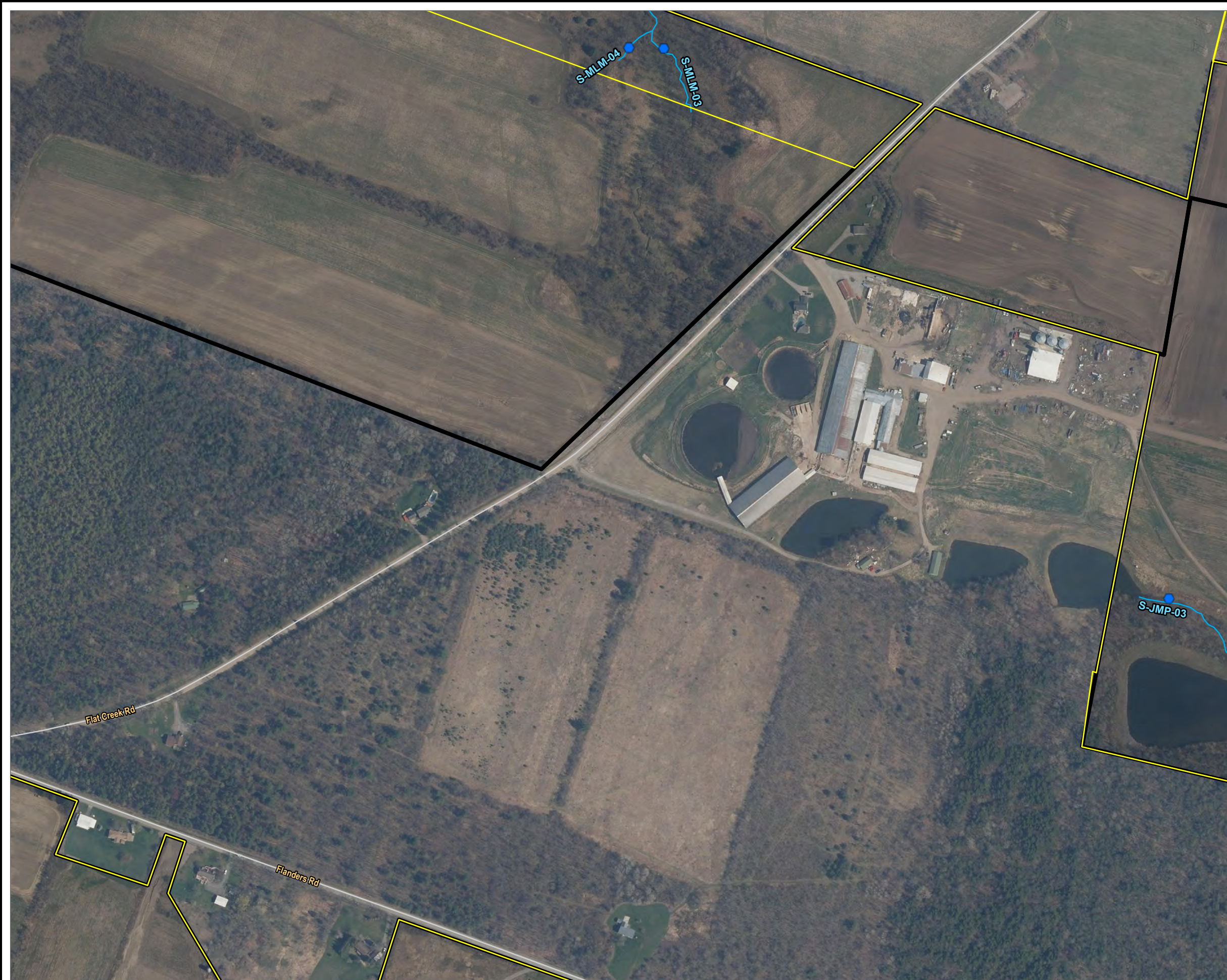


1:4,200  
1" = 350'



<b>PROJECT:</b>		<b>FLAT CREEK SOLAR TOWNS OF CANAJOHARIE AND ROOT MONTGOMERY COUNTY, NY</b>
<b>TITLE:</b>		<b>DELINEATED SURFACE WATERS</b>
DRAWN BY:	R. BARBER	PROJ. NO.: 427281.2022.0000
CHECKED BY:	G. CORYELL	<b>FIGURE 13-3</b> <i>Sheet 22 of 31</i>
APPROVED BY:	S. KRANES	
DATE:	JUNE 2024	





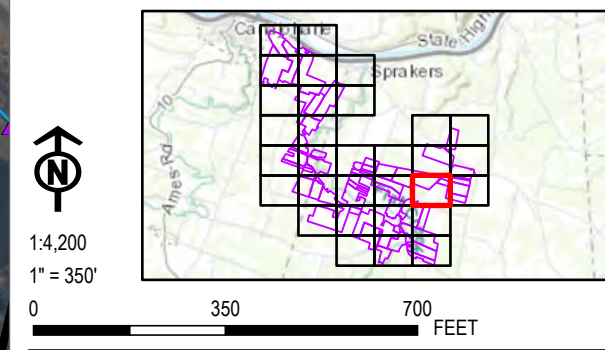
**LEGEND**

- ▲ EXISTING CULVERT
- STREAM PLOT
- DELINEATED STREAM - JURISDICTIONAL STATUS**
- USACE
- ▭ FACILITY SITE
- ▭ SURVEYED AREA
- - - TOWN BOUNDARY

**NOTES:**

1. THIS FIGURE IS DESIGNED TO BE VIEWED OR PRINTED IN COLOR AT 11X17.

BASE MAP: ESRI "USGS TOPO BASEMAP" 2021 ONLINE SERVICE LAYER.  
DATA SOURCES: TRC, SUNEAST, NYSGIS, ESRI.

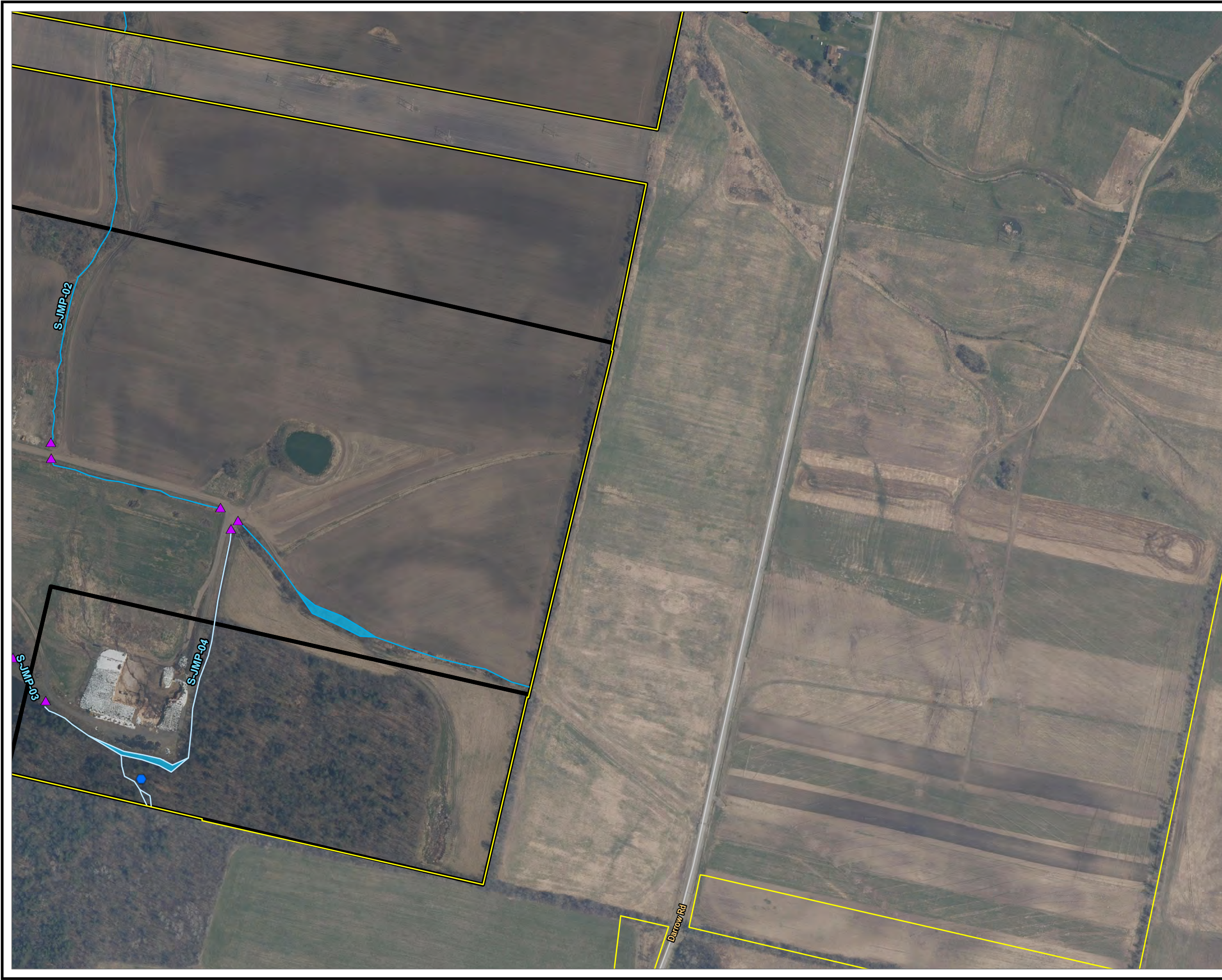


1:4,200  
1" = 350'



PROJECT:		<b>FLAT CREEK SOLAR</b>	
		TOWNS OF CANAJOHARIE AND ROOT	
		MONTGOMERY COUNTY, NY	
TITLE:		<b>DELINEATED SURFACE WATERS</b>	
DRAWN BY:	R. BARBER	PROJ. NO.:	427281.2022.0000
CHECKED BY:	G. CORYELL	<b>FIGURE 13-3</b> Sheet 23 of 31	
APPROVED BY:	S. KRANES		
DATE:	JUNE 2024		

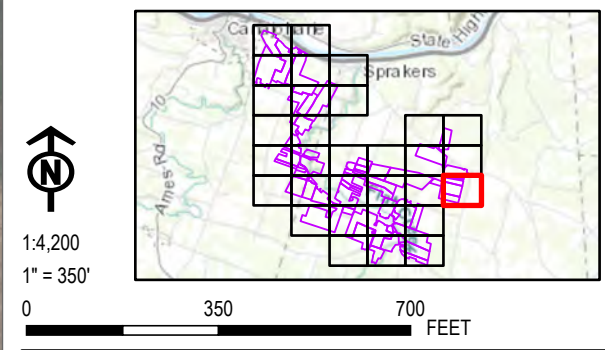




- LEGEND**
- ▲ EXISTING CULVERT
  - STREAM PLOT
- DELINEATED STREAM - JURISDICTIONAL STATUS**
- NON-JURISDICTIONAL
  - USACE
  - DELINEATED SURFACE WATER
  - FACILITY SITE
  - SURVEYED AREA
  - TOWN BOUNDARY

**NOTES:**  
 1. THIS FIGURE IS DESIGNED TO BE VIEWED OR PRINTED IN COLOR AT 11X17.

BASE MAP: ESRI "USGS TOPO BASEMAP" 2021 ONLINE SERVICE LAYER.  
 DATA SOURCES: TRC, SUNEAST, NYSGIS, ESRI.



PROJECT:		<b>FLAT CREEK SOLAR</b>	
		TOWNS OF CANAJOHARIE AND ROOT	
		MONTGOMERY COUNTY, NY	
TITLE:			
<b>DELINEATED SURFACE WATERS</b>			
DRAWN BY:	R. BARBER	PROJ. NO.:	427281.2022.0000
CHECKED BY:	G. CORYELL	<b>FIGURE 13-3</b> Sheet 24 of 31	
APPROVED BY:	S. KRANES		
DATE:	JUNE 2024		





**LEGEND**

- ▲ EXISTING CULVERT
- STREAM PLOT
- DELINEATED STREAM - JURISDICTIONAL STATUS**
- NON-JURISDICTIONAL
- USACE
- FACILITY SITE
- SURVEYED AREA
- TOWN BOUNDARY

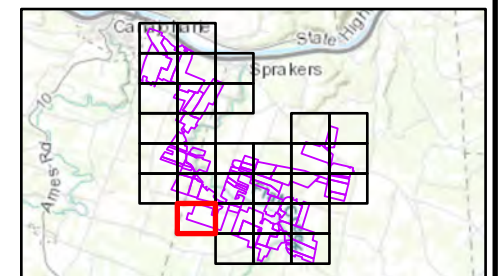
**NOTES:**

1. THIS FIGURE IS DESIGNED TO BE VIEWED OR PRINTED IN COLOR AT 11X17.

BASE MAP: ESRI "USGS TOPO BASEMAP" 2021 ONLINE SERVICE LAYER.  
DATA SOURCES: TRC, SUNEAST, NYSGIS, ESRI.



1:4,200  
1" = 350'



PROJECT:		<b>FLAT CREEK SOLAR</b>	
		TOWNS OF CANAJOHARIE AND ROOT	
		MONTGOMERY COUNTY, NY	
TITLE:			
<b>DELINEATED SURFACE WATERS</b>			
DRAWN BY:	R. BARBER	PROJ. NO.:	427281.2022.0000
CHECKED BY:	G. CORYELL	<b>FIGURE 13-3</b> Sheet 25 of 31	
APPROVED BY:	S. KRANES		
DATE:	JUNE 2024		





**LEGEND**

- ▲ EXISTING CULVERT
- STREAM PLOT
- DELINEATED STREAM - JURISDICTIONAL STATUS**
- NON-JURISDICTIONAL
- USACE
- FACILITY SITE
- SURVEYED AREA
- TOWN BOUNDARY

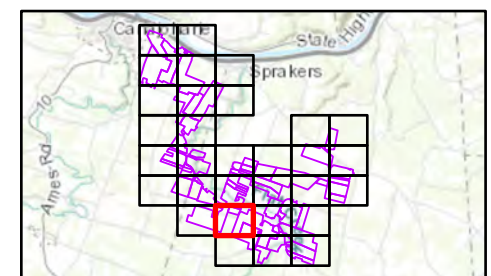
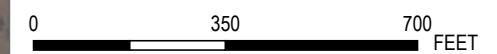
**NOTES:**

1. THIS FIGURE IS DESIGNED TO BE VIEWED OR PRINTED IN COLOR AT 11X17.

BASE MAP: ESRI "USGS TOPO BASEMAP" 2021 ONLINE SERVICE LAYER. DATA SOURCES: TRC, SUNEAST, NYSGIS, ESRI.



1:4,200  
1" = 350'



PROJECT: **FLAT CREEK SOLAR**  
TOWNS OF CANAJOHARIE AND ROOT  
MONTGOMERY COUNTY, NY

TITLE: **DELINEATED SURFACE WATERS**

DRAWN BY: R. BARBER	PROJ. NO.: 427281.2022.0000
CHECKED BY: G. CORYELL	<b>FIGURE 13-3</b> Sheet 26 of 31
APPROVED BY: S. KRANES	
DATE: JUNE 2024	





**LEGEND**

- EXISTING CULVERT
- STREAM PLOT
- DELINEATED STREAM - JURISDICTIONAL STATUS**
- NON-JURISDICTIONAL
- USACE
- USACE/ORES
- DELINEATED SURFACE WATER
- 50-FOOT REGULATORY STREAM BUFFER
- FACILITY SITE
- SURVEYED AREA
- TOWN BOUNDARY

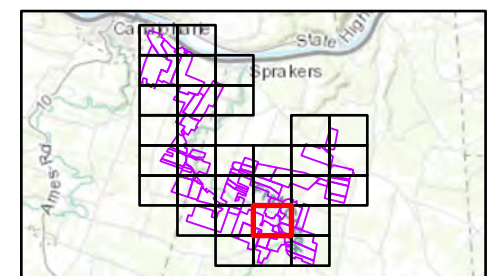
**NOTES:**

1. THIS FIGURE IS DESIGNED TO BE VIEWED OR PRINTED IN COLOR AT 11X17.

BASE MAP: ESRI "USGS TOPO BASEMAP" 2021 ONLINE SERVICE LAYER. DATA SOURCES: TRC, SUNEAST, NYSGIS, ESRI.



1:4,200  
1" = 350'



PROJECT: **FLAT CREEK SOLAR**  
TOWNS OF CANAJOHARIE AND ROOT  
MONTGOMERY COUNTY, NY

TITLE: **DELINEATED SURFACE WATERS**

DRAWN BY: R. BARBER	PROJ. NO.: 427281.2022.0000
CHECKED BY: G. CORYELL	<b>FIGURE 13-3</b> Sheet 27 of 31
APPROVED BY: S. KRANES	
DATE: JUNE 2024	





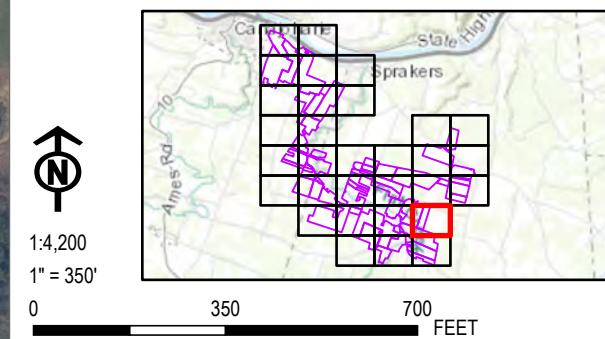
**LEGEND**

- STREAM PLOT
- DELINEATED STREAM - JURISDICTIONAL STATUS**
- NON-JURISDICTIONAL
- USACE
- DELINEATED SURFACE WATER
- FACILITY SITE
- SURVEYED AREA
- TOWN BOUNDARY

**NOTES:**

1. THIS FIGURE IS DESIGNED TO BE VIEWED OR PRINTED IN COLOR AT 11X17.

BASE MAP: ESRI "USGS TOPO BASEMAP" 2021 ONLINE SERVICE LAYER.  
DATA SOURCES: TRC, SUNEAST, NYSGIS, ESRI.



<b>PROJECT:</b>		<b>FLAT CREEK SOLAR TOWNS OF CANAJOHARIE AND ROOT MONTGOMERY COUNTY, NY</b>
<b>TITLE:</b>		<b>DELINEATED SURFACE WATERS</b>
DRAWN BY:	R. BARBER	PROJ. NO.: 427281.2022.0000
CHECKED BY:	G. CORYELL	<b>FIGURE 13-3</b> <i>Sheet 28 of 31</i>
APPROVED BY:	S. KRANES	
DATE:	JUNE 2024	

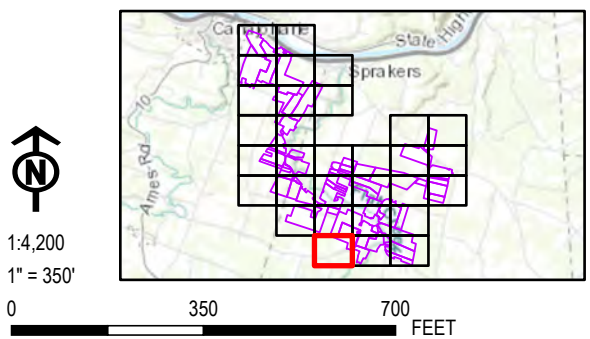




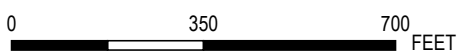
- LEGEND**
- ▲ EXISTING CULVERT
  - STREAM PLOT
- DELINEATED STREAM - JURISDICTIONAL STATUS**
- USACE
  - ▭ FACILITY SITE
  - ▭ SURVEYED AREA
  - - - TOWN BOUNDARY

**NOTES:**  
 1. THIS FIGURE IS DESIGNED TO BE VIEWED OR PRINTED IN COLOR AT 11X17.

BASE MAP: ESRI "USGS TOPO BASEMAP" 2021 ONLINE SERVICE LAYER.  
 DATA SOURCES: TRC, SUNEAST, NYSGIS, ESRI.

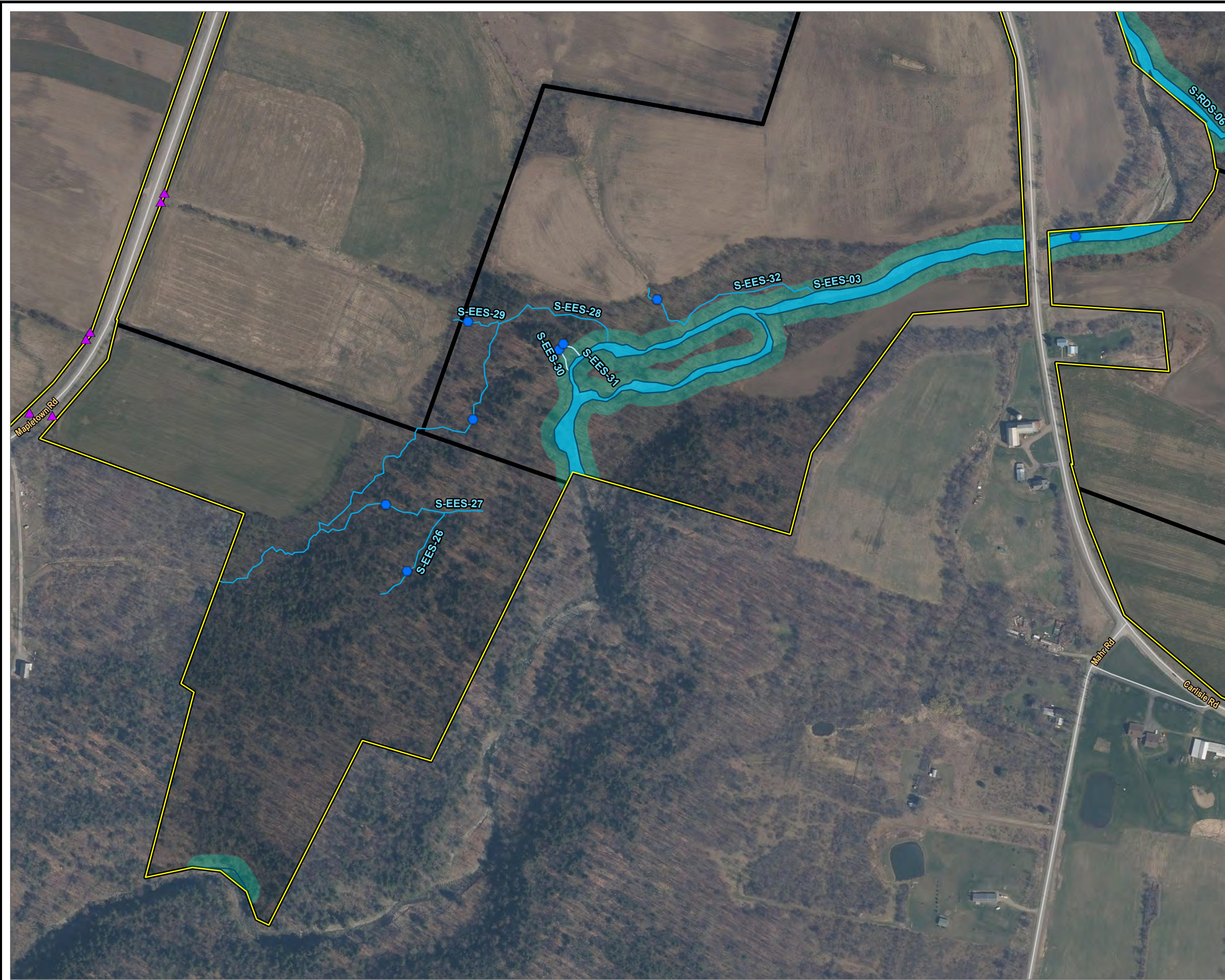


1:4,200  
 1" = 350'



PROJECT:		<b>FLAT CREEK SOLAR</b>	
		<b>TOWNS OF CANAJOHARIE AND ROOT</b>	
		<b>MONTGOMERY COUNTY, NY</b>	
TITLE:		<b>DELINEATED SURFACE WATERS</b>	
DRAWN BY:	R. BARBER	PROJ. NO.:	427281.2022.0000
CHECKED BY:	G. CORYELL	<b>FIGURE 13-3</b> Sheet 29 of 31	
APPROVED BY:	S. KRANES		
DATE:	JUNE 2024		





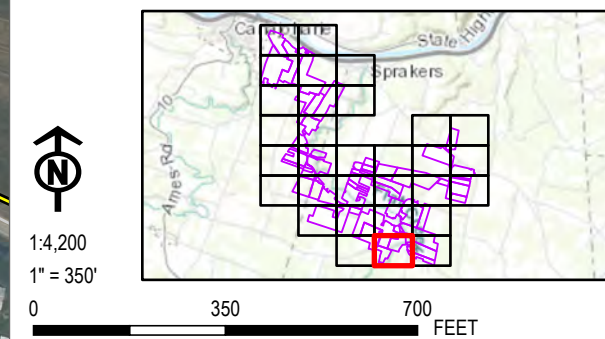
**LEGEND**

- ▲ EXISTING CULVERT
- STREAM PLOT
- DELINEATED STREAM - JURISDICTIONAL STATUS**
- NON-JURISDICTIONAL
- USACE
- USACE/ORES
- DELINEATED SURFACE WATER
- 50-FOOT REGULATORY STREAM BUFFER
- FACILITY SITE
- SURVEYED AREA
- TOWN BOUNDARY

**NOTES:**

1. THIS FIGURE IS DESIGNED TO BE VIEWED OR PRINTED IN COLOR AT 11X17.

BASE MAP: ESRI "USGS TOPO BASEMAP" 2021 ONLINE SERVICE LAYER.  
DATA SOURCES: TRC, SUNEAST, NYSGIS, ESRI.

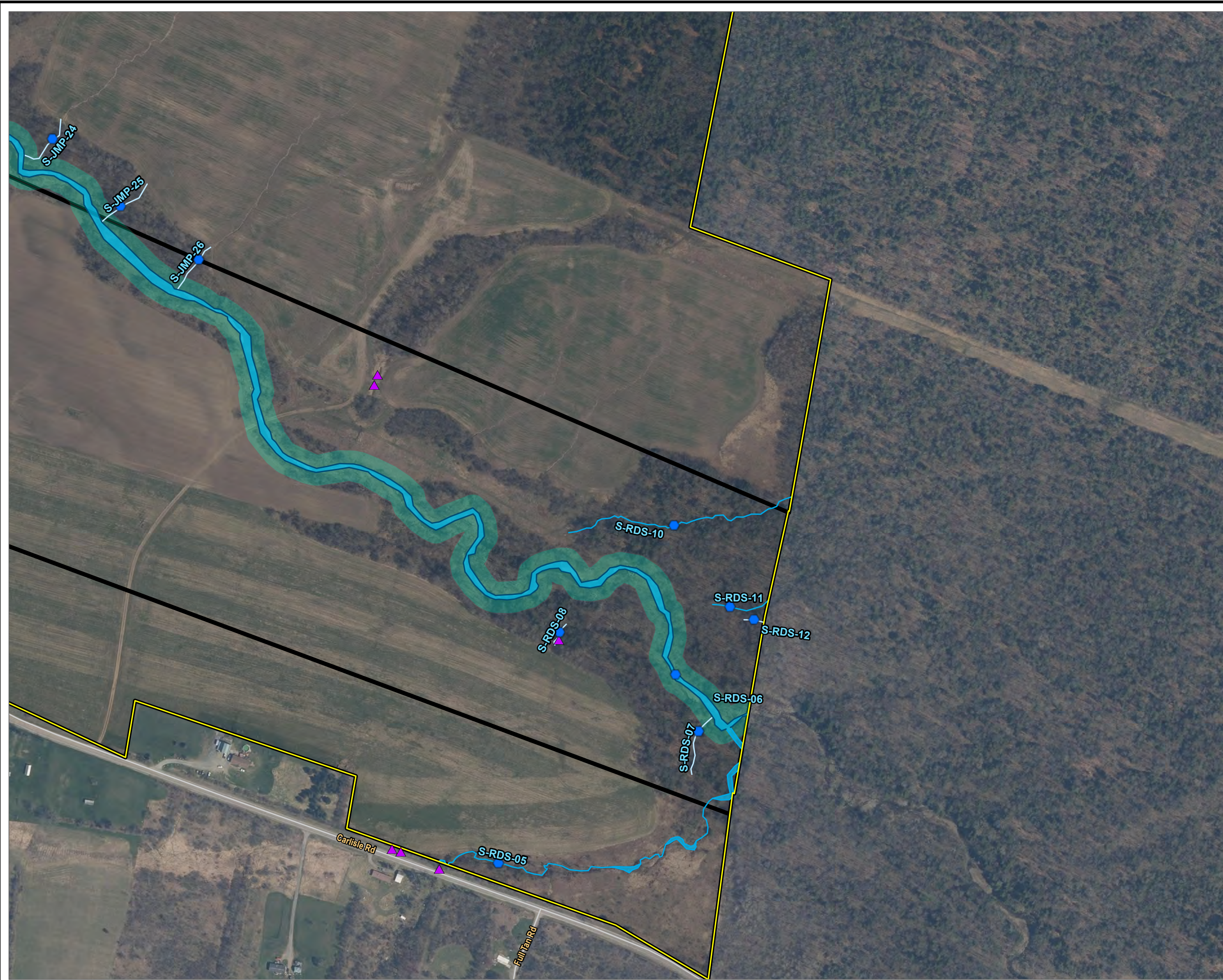


PROJECT: **FLAT CREEK SOLAR**  
TOWNS OF CANAJOHARIE AND ROOT  
MONTGOMERY COUNTY, NY

TITLE: **DELINEATED SURFACE WATERS**

DRAWN BY: R. BARBER	PROJ. NO.: 427281.2022.0000	<b>FIGURE 13-3</b> <i>Sheet 30 of 31</i>
CHECKED BY: G. CORYELL		
APPROVED BY: S. KRANES		
DATE: JUNE 2024		





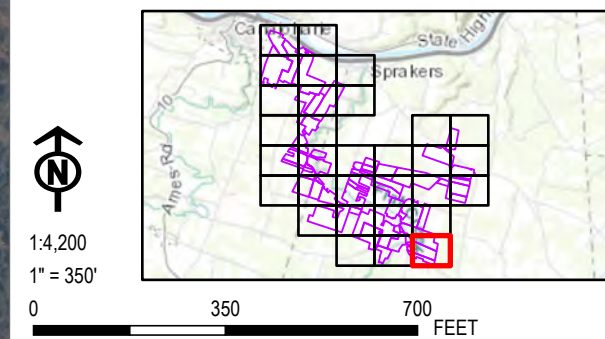
**LEGEND**

- EXISTING CULVERT
- STREAM PLOT
- DELINEATED STREAM - JURISDICTIONAL STATUS**
- NON-JURISDICTIONAL
- USACE
- USACE/ORES
- DELINEATED SURFACE WATER
- 50-FOOT REGULATORY STREAM BUFFER
- FACILITY SITE
- SURVEYED AREA
- TOWN BOUNDARY

**NOTES:**

1. THIS FIGURE IS DESIGNED TO BE VIEWED OR PRINTED IN COLOR AT 11X17.

BASE MAP: ESRI "USGS TOPO BASEMAP" 2021 ONLINE SERVICE LAYER.  
 DATA SOURCES: TRC, SUNEAST, NYSGIS, ESRI.



PROJECT: **FLAT CREEK SOLAR**  
 TOWNS OF CANAJOHARIE AND ROOT  
 MONTGOMERY COUNTY, NY

TITLE: **DELINEATED SURFACE WATERS**

DRAWN BY: R. BARBER	PROJ. NO.: 427281.2022.0000
CHECKED BY: G. CORYELL	<b>FIGURE 13-3</b> Sheet 31 of 31
APPROVED BY: S. KRANES	
DATE: JUNE 2024	