

**LEGEND**

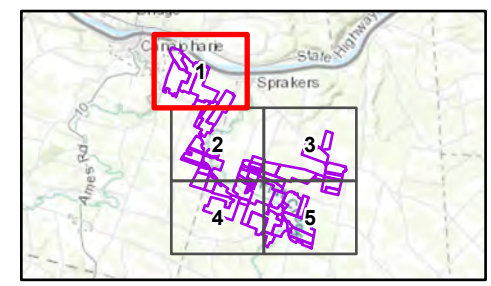
- FACILITY SITE
- VILLAGE BOUNDARY
- TOWN BOUNDARY
- COUNTY BOUNDARY

**DEPTH TO HIGH GROUNDWATER**

- 0 CM
- 1 - 20 CM
- 23 - 46 CM
- 48 - 76 CM
- 137 - 201 CM

**NOTES:**  
 1. THIS FIGURE IS DESIGNED TO BE VIEWED OR PRINTED IN COLOR AT 11X17.

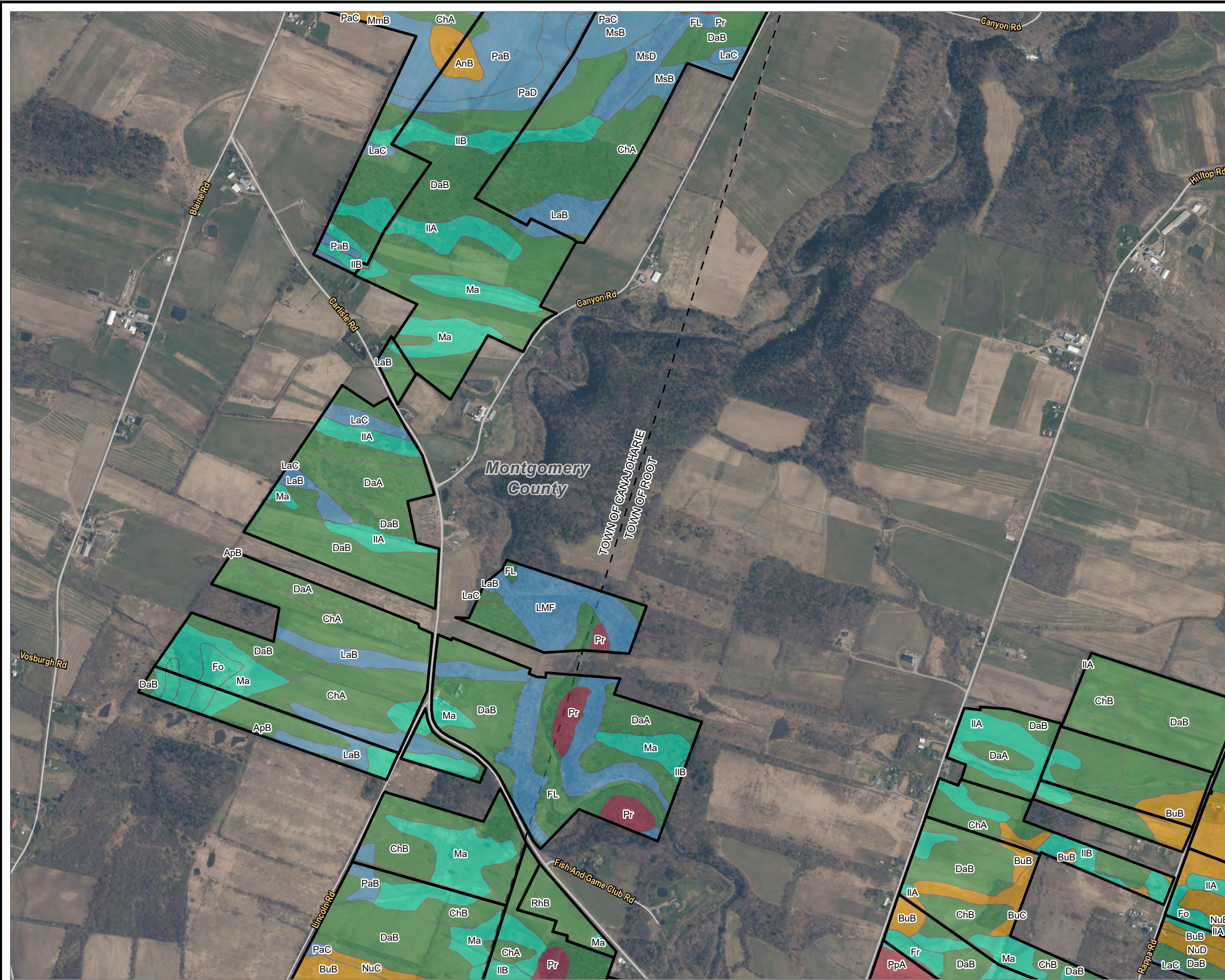
BASE MAP: WEB MAP SERVICE FROM NY GIS GOV (2021).  
 DATA SOURCES: TRC, SUNEAST, NYSGIS, NYSDEC NRCS, ESRI.



1:12,000  
 1" = 1,000'

PROJECT:		<b>FLAT CREEK SOLAR</b>	
		<b>TOWNS OF CANAJOHARIE AND ROOT</b>	
		<b>MONTGOMERY COUNTY, NY</b>	
TITLE:			
<b>DEPTH TO HIGH GROUNDWATER</b>			
DRAWN BY:	A. CORDAS	PROJ. NO.:	427281.2022.0000
CHECKED BY:	G. CORYELL	<b>FIGURE 13-1</b> Sheet 1 of 5	
APPROVED BY:	S. KRANES		
DATE:	JUNE 2024		





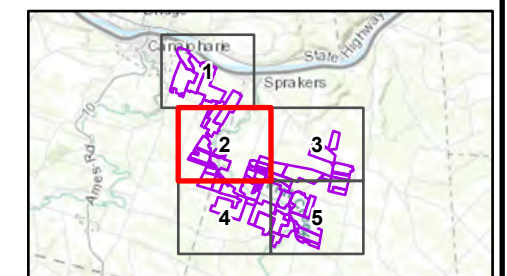
**LEGEND**

- FACILITY SITE
  - VILLAGE BOUNDARY
  - TOWN BOUNDARY
  - COUNTY BOUNDARY
- DEPTH TO HIGH GROUNDWATER
- 0 CM
  - 1 - 20 CM
  - 23 - 46 CM
  - 48 - 76 CM
  - 137 - 201 CM

**NOTES:**

1. THIS FIGURE IS DESIGNED TO BE VIEWED OR PRINTED IN COLOR AT 11X17.

BASE MAP: WEB MAP SERVICE FROM NY GIS GOV (2021).  
 DATA SOURCES: TRC, SUNEAST, NYSGIS, NYSDEC NRCS, ESRI.

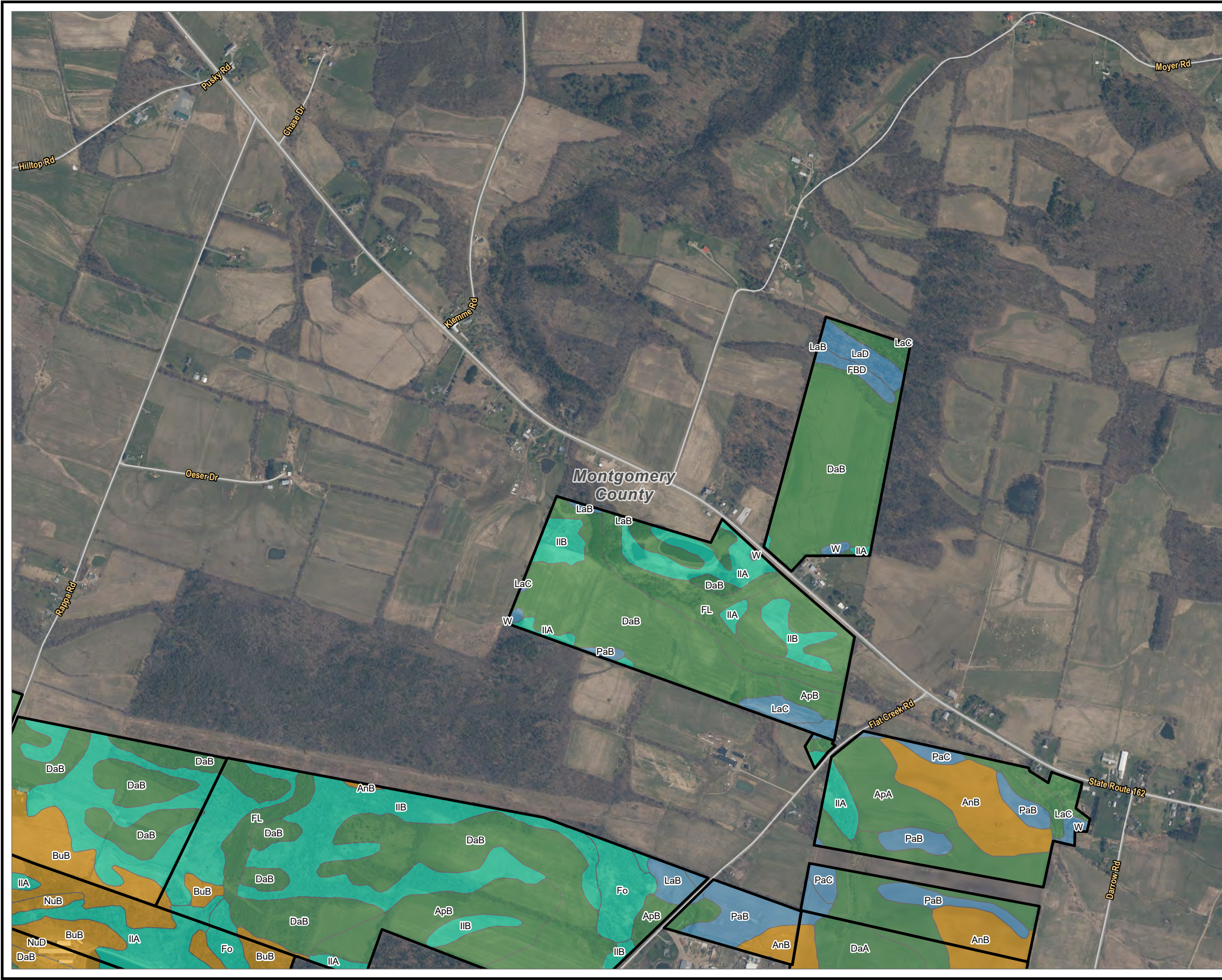


1:12,000  
 1" = 1,000'



PROJECT:		<b>FLAT CREEK SOLAR</b> TOWNS OF CANAJOHARIE AND ROOT MONTGOMERY COUNTY, NY	
TITLE: <b>DEPTH TO HIGH GROUNDWATER</b>			
DRAWN BY:	A. CORDAS	PROJ. NO.:	427281.2022.0000
CHECKED BY:	G. CORYELL	<b>FIGURE 13-1</b> Sheet 2 of 5	
APPROVED BY:	S. KRANES		
DATE:	JUNE 2024		





**LEGEND**

- FACILITY SITE
- VILLAGE BOUNDARY
- TOWN BOUNDARY
- COUNTY BOUNDARY

**DEPTH TO HIGH GROUNDWATER**

- 0 CM
- 1 - 20 CM
- 23 - 46 CM
- 48 - 76 CM
- 137 - 201 CM

**NOTES:**  
 1. THIS FIGURE IS DESIGNED TO BE VIEWED OR PRINTED IN COLOR AT 11X17.

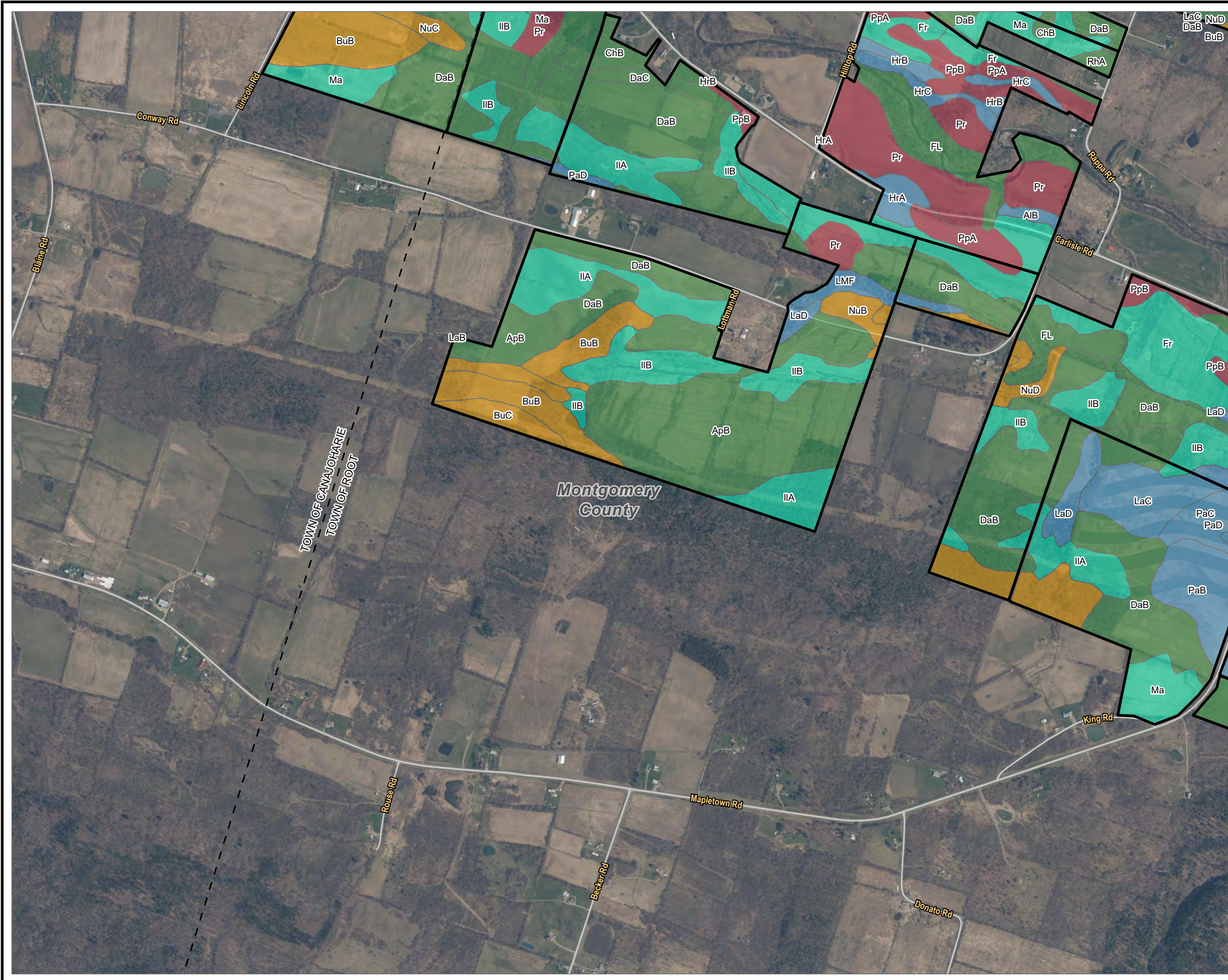
BASE MAP: WEB MAP SERVICE FROM NY GIS GOV (2021).  
 DATA SOURCES: TRC, SUNEAST, NYSGIS, NYSDEC NRCS, ESRI.

1:12,000  
 1" = 1,000'

PROJECT:		<b>FLAT CREEK SOLAR</b> TOWNS OF CANAJOHARIE AND ROOT MONTGOMERY COUNTY, NY
TITLE:		<b>DEPTH TO HIGH GROUNDWATER</b>
DRAWN BY:	A. CORDAS	PROJ. NO.: 427281.2022.0000
CHECKED BY:	G. CORYELL	<b>FIGURE 13-1</b> Sheet 3 of 5
APPROVED BY:	S. KRANES	
DATE:	JUNE 2024	

15 GREENFIELD PKWY., STE. 102  
 LIVERPOOL, NY 13088





**LEGEND**

- FACILITY SITE
- VILLAGE BOUNDARY
- TOWN BOUNDARY
- COUNTY BOUNDARY

**DEPTH TO HIGH GROUNDWATER**

- 0 CM
- 1 - 20 CM
- 23 - 46 CM
- 48 - 76 CM
- 137 - 201 CM

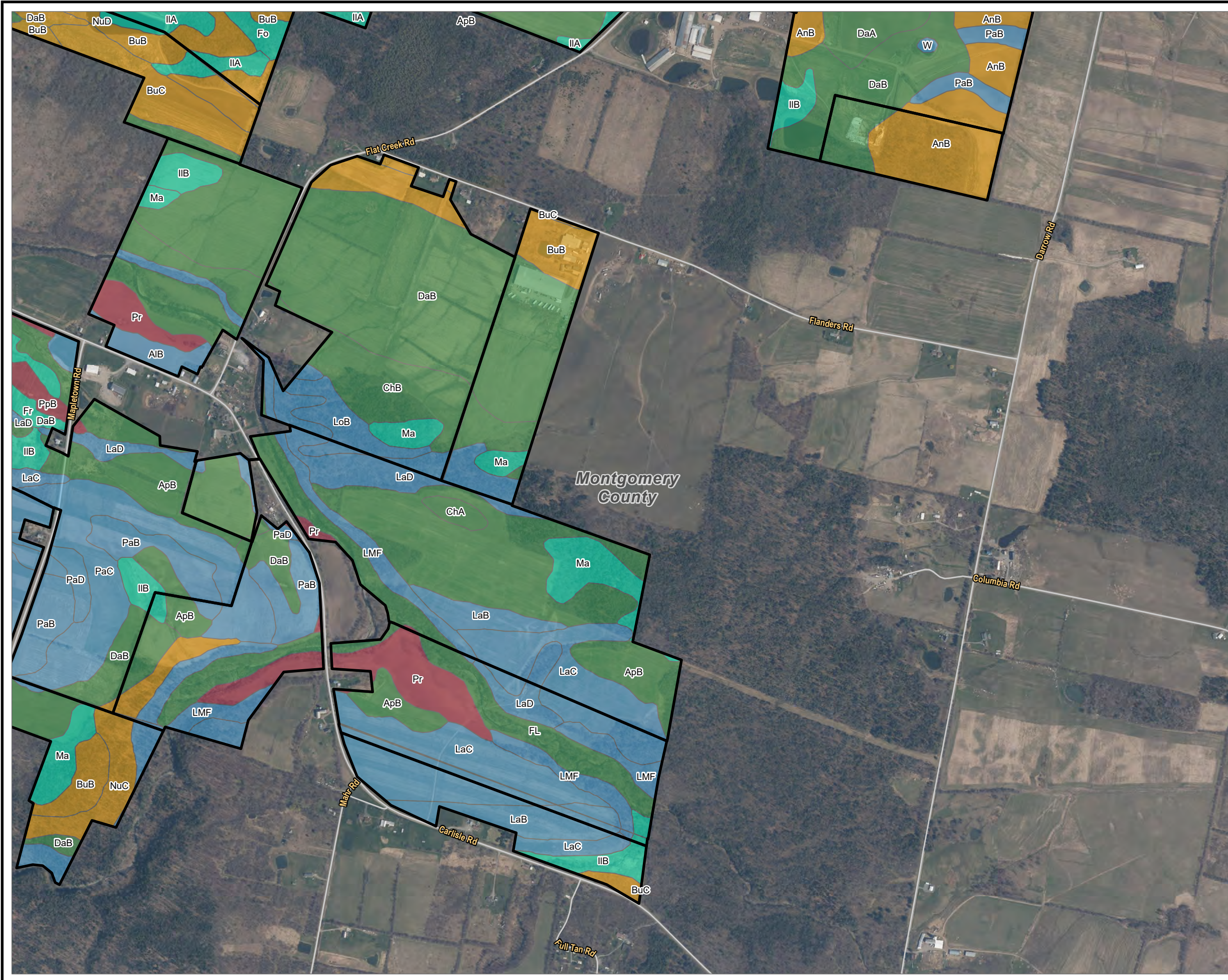
**NOTES:**  
 1. THIS FIGURE IS DESIGNED TO BE VIEWED OR PRINTED IN COLOR AT 11X17.

BASE MAP: WEB MAP SERVICE FROM NY GIS GOV (2021).  
 DATA SOURCES: TRC, SUNEAST, NYSGIS, NYSDEC NRCS, ESRI.

1:12,000  
 1" = 1,000'

PROJECT:		<b>FLAT CREEK SOLAR</b> TOWNS OF CANAJOHARIE AND ROOT MONTGOMERY COUNTY, NY	
TITLE:		<b>DEPTH TO HIGH GROUNDWATER</b>	
DRAWN BY:	A. CORDAS	PROJ. NO.:	427281.2022.0000
CHECKED BY:	G. CORYELL	<b>FIGURE 13-1</b> Sheet 4 of 5	
APPROVED BY:	S. KRANES		
DATE:	JUNE 2024		





**LEGEND**

- FACILITY SITE
- VILLAGE BOUNDARY
- TOWN BOUNDARY
- COUNTY BOUNDARY

**DEPTH TO HIGH GROUNDWATER**

- 0 CM
- 1 - 20 CM
- 23 - 46 CM
- 48 - 76 CM
- 137 - 201 CM

**NOTES:**  
 1. THIS FIGURE IS DESIGNED TO BE VIEWED OR PRINTED IN COLOR AT 11X17.

BASE MAP: WEB MAP SERVICE FROM NY GIS GOV (2021).  
 DATA SOURCES: TRC, SUNEAST, NYSGIS, NYSDEC NRCS, ESRI.

1:12,000  
 1" = 1,000'

PROJECT:		<b>FLAT CREEK SOLAR</b>	
		TOWNS OF CANAJOHARIE AND ROOT	
		MONTGOMERY COUNTY, NY	
TITLE:			
<b>DEPTH TO HIGH GROUNDWATER</b>			
DRAWN BY:	A. CORDAS	PROJ. NO.:	427281.2022.0000
CHECKED BY:	G. CORYELL	<b>FIGURE 13-1</b> Sheet 5 of 5	
APPROVED BY:	S. KRANES		
DATE:	JUNE 2024		