

MUSYM	MUNAME	ACRES
AIB	Alton gravelly loam, 3 to 8 percent slopes	9.78
AnB	Angola silt loam, 3 to 8 percent slopes	79.52
ApA	Appleton silt loam, 0 to 3 percent slopes	38.94
ApB	Appleton silt loam, 3 to 8 percent slopes	292.60
BuB	Burdett channery silt loam, 3 to 8 percent slopes	158.73
BuC	Burdett channery silt loam, 8 to 15 percent slopes	44.01
CFL	Cut and fill land	7.16
ChA	Churchville silty clay loam, 0 to 3 percent slopes	67.46
ChB	Churchville silty clay loam, 3 to 8 percent slopes	196.54
DaA	Darien silt loam, 0 to 3 percent slopes	42.84
DaB	Darien silt loam, 3 to 8 percent slopes	936.82
DaC	Darien silt loam, 8 to 15 percent slopes	4.97
FBD	Farmington-Rock outcrop association, moderately steep	3.86
FL	Fluvaquents, loamy	153.20
Fo	Fonda mucky silty clay loam	28.40
Fr	Fredon silt loam	59.71
HrA	Howard gravelly silt loam, 0 to 3 percent slopes	5.01
HrB	Howard gravelly silt loam, 3 to 8 percent slopes	3.30
HrC	Howard gravelly silt loam, 8 to 15 percent slopes	6.44
IIA	Ilion silt loam, 0 to 3 percent slopes	138.31
IIB	Ilion silt loam, 3 to 8 percent slopes	192.99
LaB	Lansing silt loam, 3 to 8 percent slopes	178.09
LaC	Lansing silt loam, 8 to 15 percent slopes	258.37

MUSYM	MUNAME	ACRES
LaD	Lansing silt loam, 15 to 25 percent slopes	111.57
LMF	Lansing and Mohawk soils, 25 to 60 percent slopes	97.19
LoB	Lordstown gravelly silt loam, 3 to 8 percent slopes	10.46
Ma	Madalin silty clay loam, 0 to 3 percent slopes	161.51
Md	Madalin silty clay loam, moderately shallow variant	0.11
MmB	Manheim silt loam, 3 to 8 percent slopes	5.18
MsB	Mohawk silt loam, 3 to 8 percent slopes	14.45
MsD	Mohawk silt loam, 15 to 25 percent slopes	10.81
NuB	Nunda channery silt loam, 3 to 8 percent slopes	7.09
NuC	Nunda channery silt loam, 8 to 15 percent slopes	23.23
NuD	Nunda channery silt loam, 15 to 25 percent slopes	12.72
PaB	Palatine silt loam, 3 to 8 percent slopes	126.31
PaC	Palatine silt loam, 8 to 15 percent slopes	83.07
PaD	Palatine silt loam, 15 to 25 percent slopes	51.83
PpA	Phelps gravelly loam, 0 to 3 percent slopes	15.30
PpB	Phelps gravelly loam, 3 to 8 percent slopes	16.74
Pr	Phelps gravelly loam, fan	89.67
RhA	Rhinebeck silty clay loam, 0 to 3 percent slopes	2.45
RhB	Rhinebeck silty clay loam, 3 to 8 percent slopes	14.47
RLF	Rock outcrop-Farmington association, very steep	8.10
W	Water	3.96
WaB	Wassaic silt loam, 3 to 8 percent slopes	9.74
WaC	Wassaic silt loam, 8 to 15 percent slopes	10.69

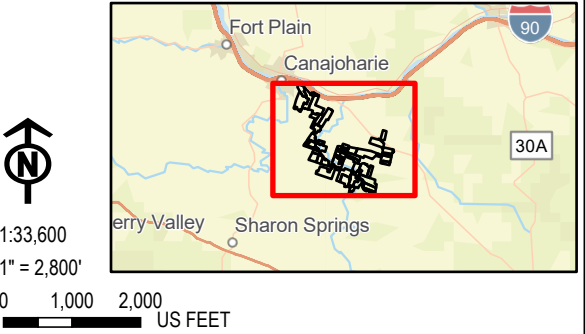
LEGEND

- FACILITY SITE
- NRCS SOILS

NOTES:  
1. THIS FIGURE IS DESIGNED TO BE VIEWED OR PRINTED IN COLOR AT 11X17.

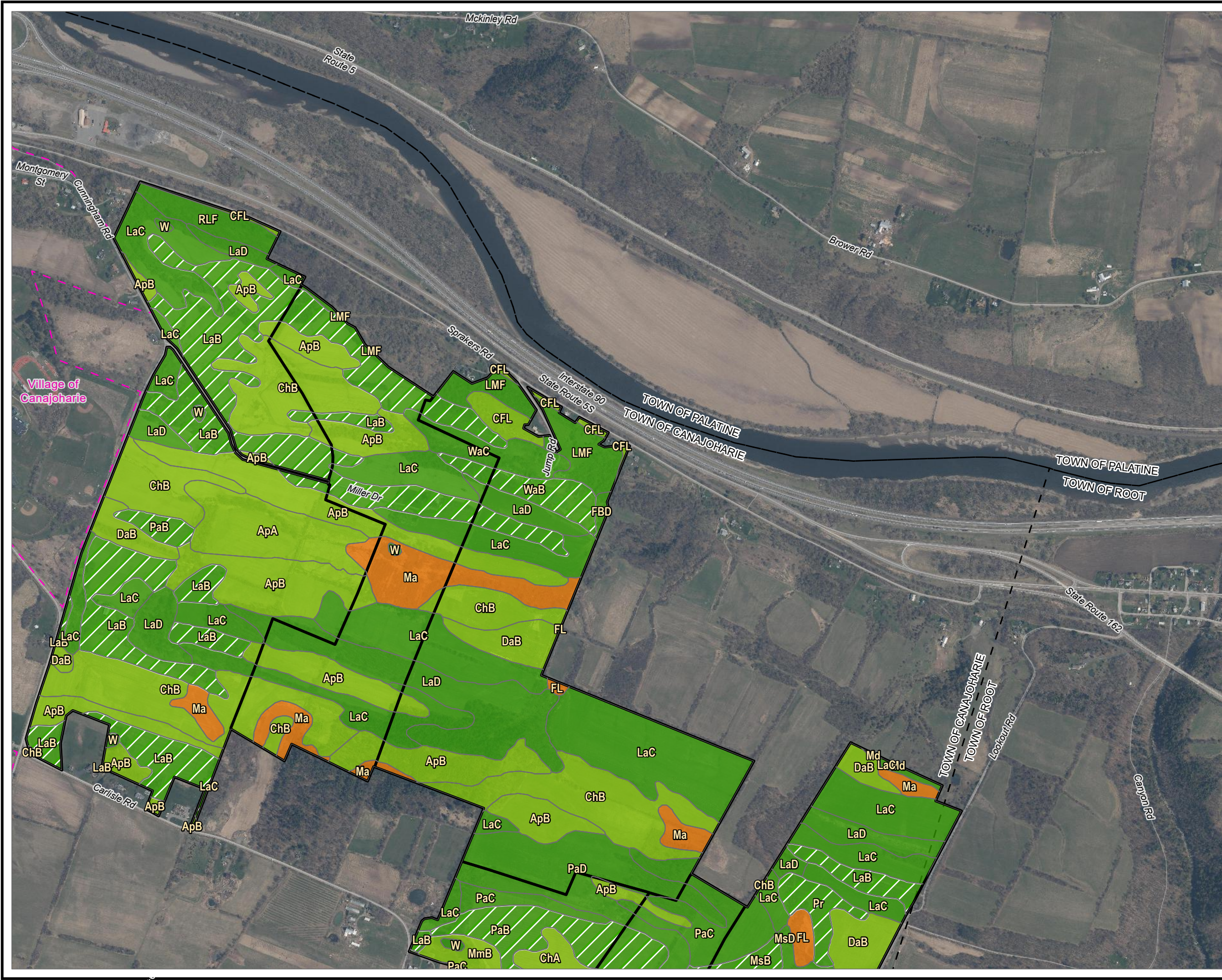
BASE MAP: NYSGIS "LATEST ORTHOIMAGERY" 2021 ONLINE SERVICE LAYER.

DATA SOURCES: SUNEAST, TRC, NYSGIS, USGS, ESRI, NRCS.



PROJECT: <b>FLAT CREEK SOLAR TOWNS OF CANAJOHARIE AND ROOT MONTGOMERY COUNTY, NY</b>	
TITLE: <b>NRCS SOIL TYPES OVERVIEW</b>	
DRAWN BY: R. BARBER	PROJ. NO.: 427281.2022.0000
CHECKED BY: G. CORYELL	<b>FIGURE 10-3</b>
APPROVED BY: S. KRANES	
DATE: JUNE 2024	





**LEGEND**

- FACILITY SITE
- HYDRIC RATING (0%)
- HYDRIC RATING (1 - 32%)
- HYDRIC RATING (66 - 99%)
- MINERAL SOIL GROUPS 1-4
- VILLAGE BOUNDARY
- TOWN BOUNDARY

**NOTES:**

1. THIS FIGURE IS DESIGNED TO BE VIEWED OR PRINTED IN COLOR AT 11X17.

BASE MAP: NYSGIS "LATEST ORTHOIMAGERY" 2021 ONLINE SERVICE LAYER.

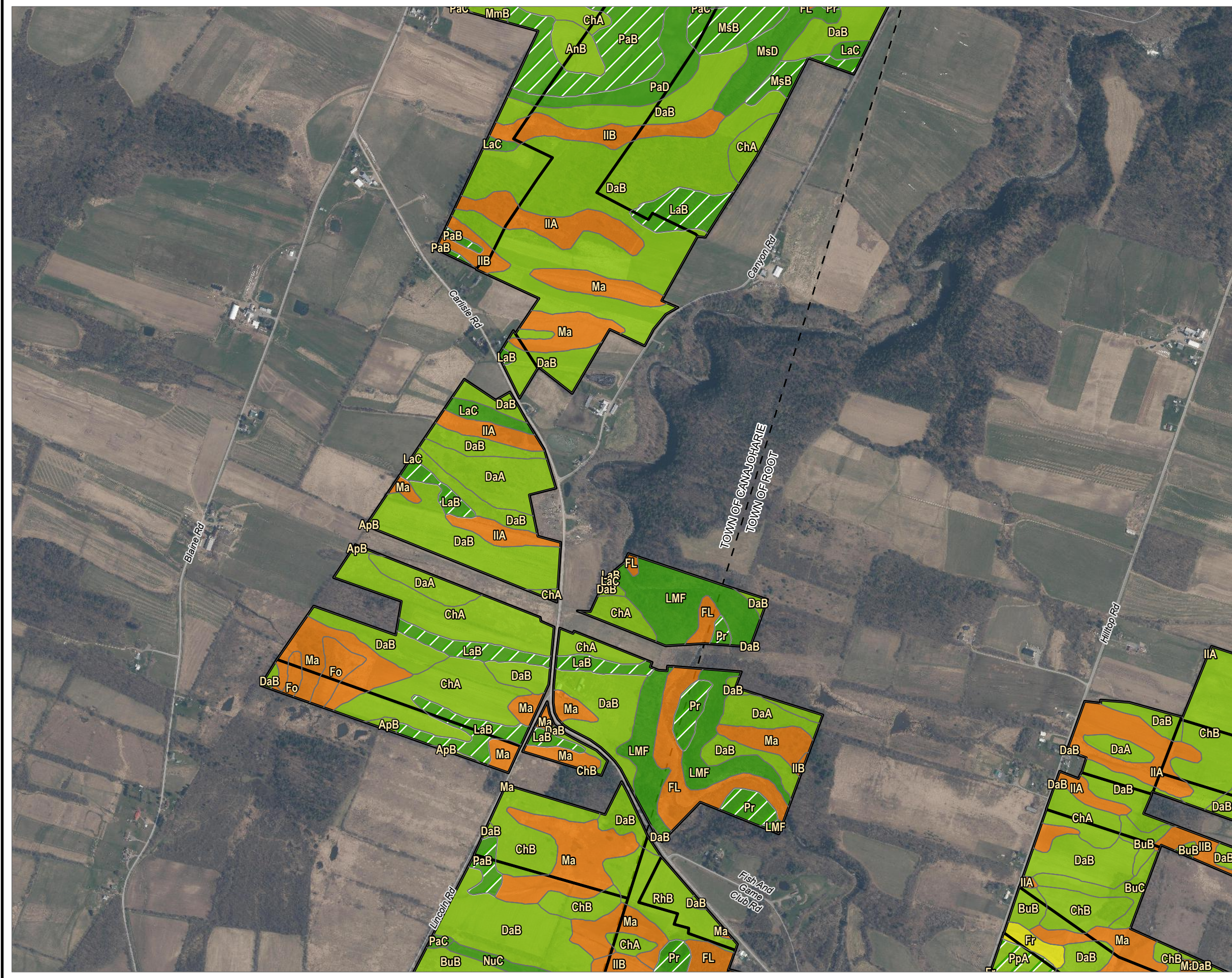
DATA SOURCES: SUNEAST, TRC, NYSGIS, USGS, ESRI, NRCS.

1:12,000  
1" = 1,000'

PROJECT:		<b>FLAT CREEK SOLAR</b>	
		<b>TOWNS OF CANAJOHARIE AND ROOT</b>	
		<b>MONTGOMERY COUNTY, NY</b>	
TITLE:		<b>NRCS SOIL TYPES</b>	
DRAWN BY:	R. BARBER	PROJ. NO.:	427281.2022.0000
CHECKED BY:	G. CORYELL	<b>FIGURE 10-3</b> Sheet 1 of 5	
APPROVED BY:	S. KRANES		
DATE:	JUNE 2024		

15 GREENFIELD PKWY., STE. 102  
LIVERPOOL, NY 13088





**LEGEND**

- FACILITY SITE
- HYDRIC RATING (0%)
- HYDRIC RATING (1 - 32%)
- HYDRIC RATING (33 - 65%)
- HYDRIC RATING (66 - 99%)
- MINERAL SOIL GROUPS 1-4
- TOWN BOUNDARY

**NOTES:**

1. THIS FIGURE IS DESIGNED TO BE VIEWED OR PRINTED IN COLOR AT 11X17.

BASE MAP: NYSGIS "LATEST ORTHOIMAGERY" 2021 ONLINE SERVICE LAYER.

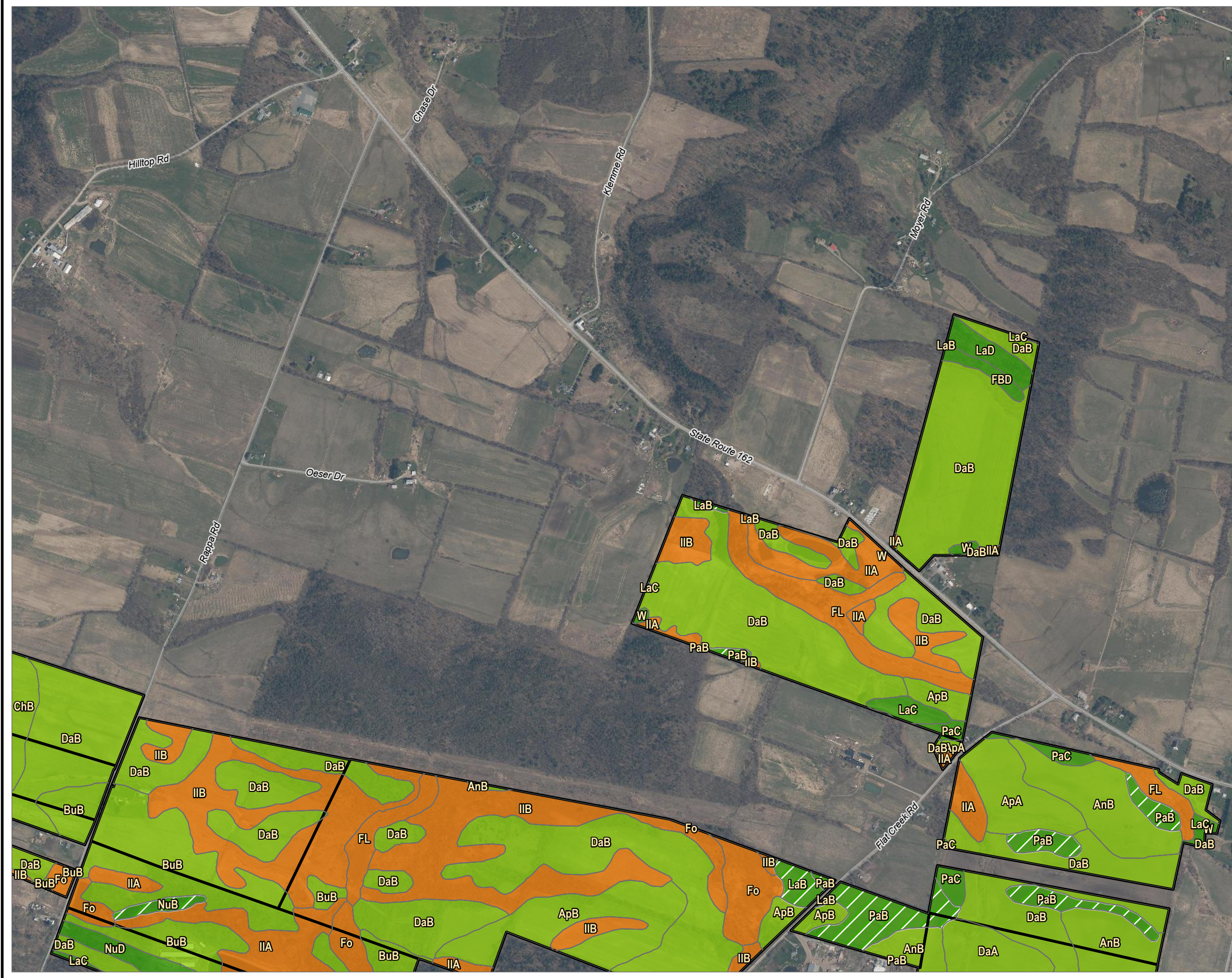
DATA SOURCES: SUNEAST, TRC, NYSGIS, USGS, ESRI, NRCS.

1:12,000  
1" = 1,000'

PROJECT:		<b>FLAT CREEK SOLAR</b> TOWNS OF CANAJOHARIE AND ROOT MONTGOMERY COUNTY, NY	
TITLE:		<b>NRCS SOIL TYPES</b>	
DRAWN BY:	R. BARBER	PROJ. NO.:	427281.2022.0000
CHECKED BY:	G. CORYELL	<b>FIGURE 10-3</b> Sheet 2 of 5	
APPROVED BY:	S. KRANES		
DATE:	JUNE 2024		

15 GREENFIELD PKWY., STE. 102  
LIVERPOOL, NY 13088





**LEGEND**

- FACILITY SITE
- HYDRIC RATING (0%)
- HYDRIC RATING (1 - 32%)
- HYDRIC RATING (66 - 99%)
- MINERAL SOIL GROUPS 1-4
- TOWN BOUNDARY

**NOTES:**

1. THIS FIGURE IS DESIGNED TO BE VIEWED OR PRINTED IN COLOR AT 11X17.

BASE MAP: NYSGIS "LATEST ORTHOIMAGERY" 2021 ONLINE SERVICE LAYER.

DATA SOURCES: SUNEAST, TRC, NYSGIS, USGS, ESRI, NRCS.

1:12,000  
1" = 1,000'

PROJECT:

**FLAT CREEK SOLAR**  
**TOWNS OF CANAJOHARIE AND ROOT**  
**MONTGOMERY COUNTY, NY**

TITLE:

**NRCS SOIL TYPES**

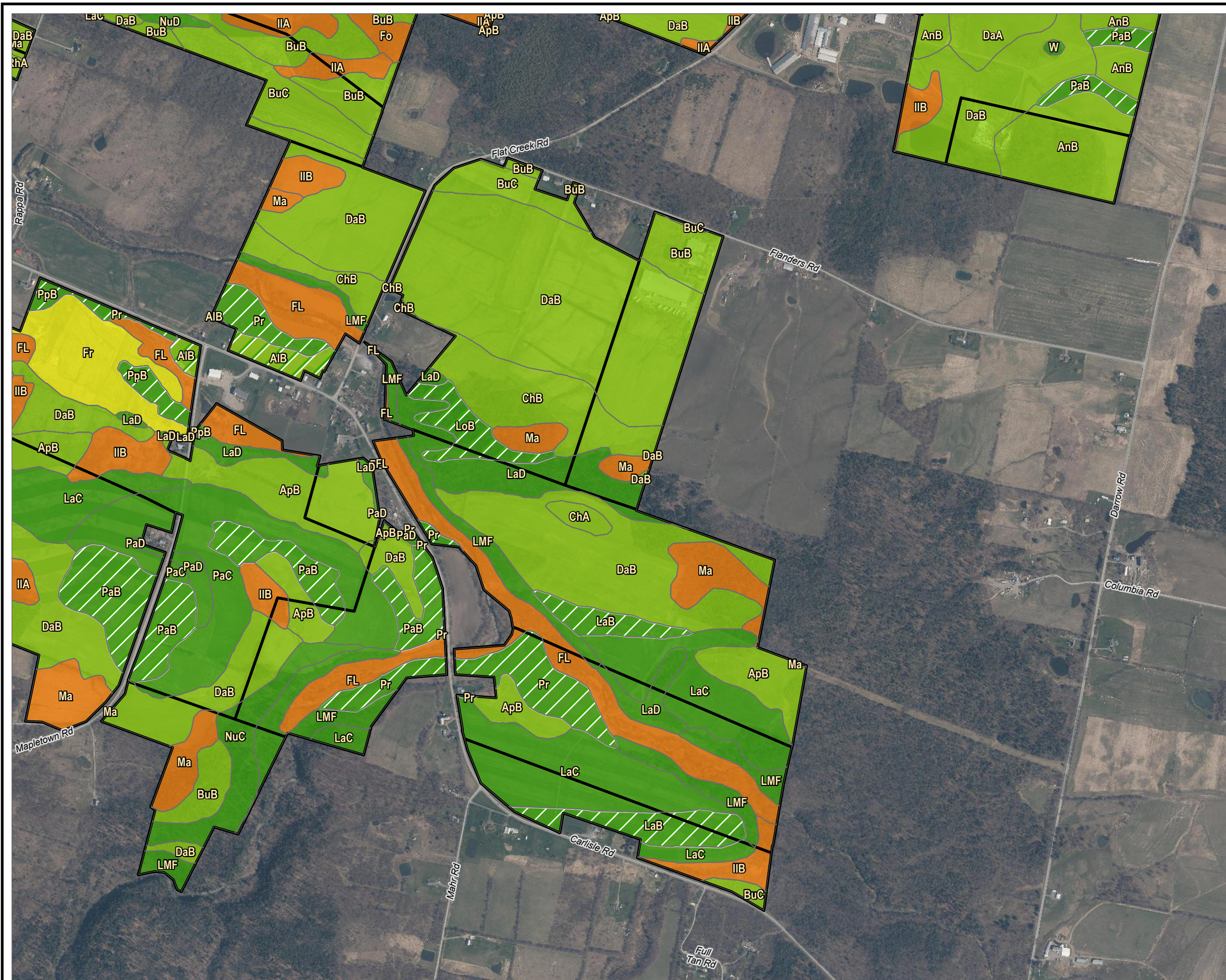
DRAWN BY:	R. BARBER	PROJ. NO.:	427281.2022.0000
CHECKED BY:	G. CORYELL	<b>FIGURE 10-3</b> Sheet 3 of 5	
APPROVED BY:	S. KRANES		
DATE:	JUNE 2024		

15 GREENFIELD PKWY., STE. 102  
LIVERPOOL, NY 13088









**LEGEND**

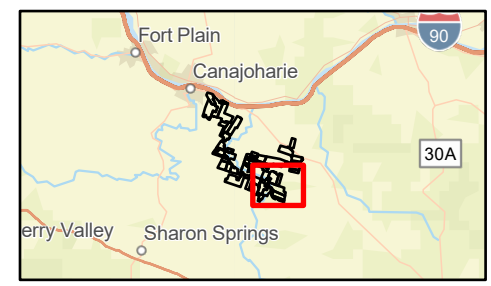
- FACILITY SITE
- HYDRIC RATING (0%)
- HYDRIC RATING (1 - 32%)
- HYDRIC RATING (33 - 65%)
- HYDRIC RATING (66 - 99%)
- MINERAL SOIL GROUPS 1-4
- TOWN BOUNDARY

**NOTES:**  
1. THIS FIGURE IS DESIGNED TO BE VIEWED OR PRINTED IN COLOR AT 11X17.

BASE MAP: NYSGIS "LATEST ORTHOIMAGERY" 2021 ONLINE SERVICE LAYER.

DATA SOURCES: SUNEAST, TRC, NYSGIS, USGS, ESRI, NRCS.

1:12,000  
1" = 1,000'  
0 1,000 2,000 US FEET



PROJECT:		FLAT CREEK SOLAR TOWNS OF CANAJOHARIE AND ROOT MONTGOMERY COUNTY, NY	
TITLE:		NRCS SOIL TYPES	
DRAWN BY:	R. BARBER	PROJ. NO.:	427281.2022.0000
CHECKED BY:	G. CORYELL	<b>FIGURE 10-3</b> Sheet 5 of 5	
APPROVED BY:	S. KRANES		
DATE:	JUNE 2024		