

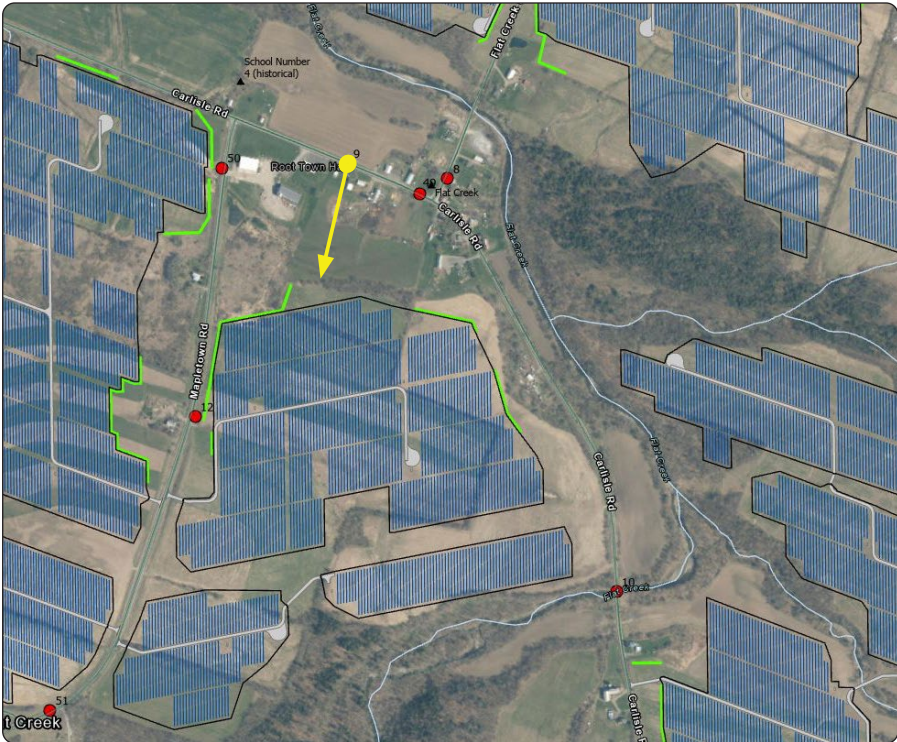
VP9 - Carlisle Road from the community of Flat Creek

Existing Conditions

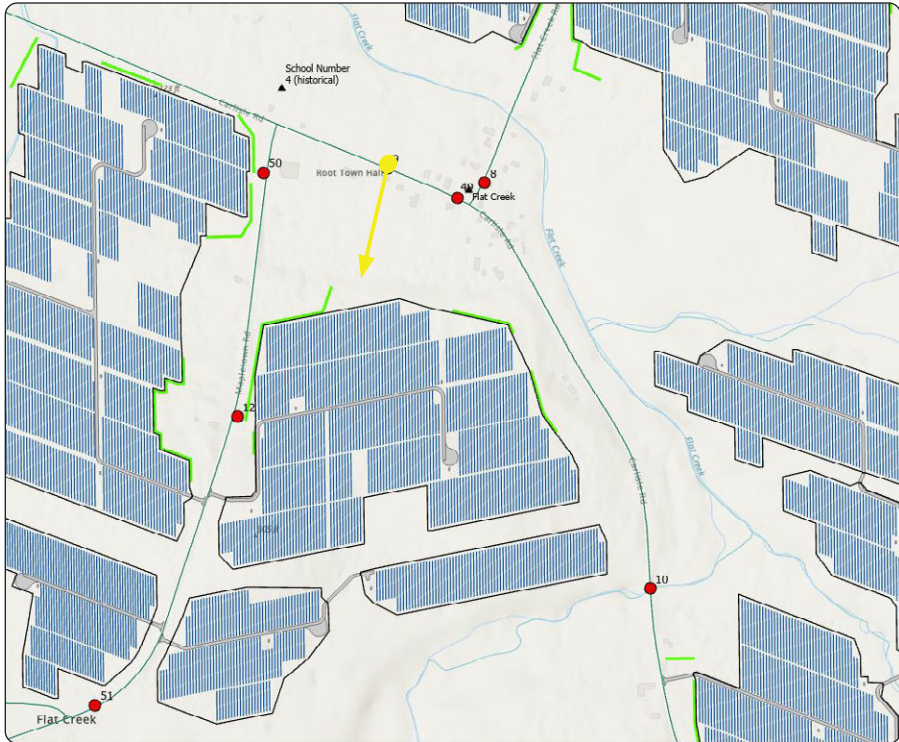


SSW

Viewpoint Location Aerial Map



Viewpoint Location Topographic Map



Viewpoint Location Details

Viewpoint Coordinates	42.84324, -74.50359
Town	Root
Landscape Similarity Zone	1,3
Distance to Project	1,035 Feet
Direction of View	South-Southwest
Lens Focal Length	35 mm Equivalent
Date/Time of Photo	3/25/2021, 12:23 PM
Comments	Photo representative of the community of Flat Creek from Carlisle Road (306 AADT) in vicinity to the Root Town Hall from Distance Zone 1.







VP16 - Conway Road

Existing Conditions



S

Viewpoint Location Aerial Map



Viewpoint Location Topographic Map



Viewpoint Location Details

Viewpoint Coordinates	42.846761, -74.532898
Town	Root
Landscape Similarity Zone	1,2,3
Distance to Project	212 Feet
Direction of View	South
Lens Focal Length	35 mm Equivalent
Date/Time of Photo	3/25/2021, 1:58 PM
Comments	Location recommended by Town of Root during a meeting with the Applicant. The photo depicts a foreground view of the Facility from a non-participating landowner. View also representative of a local road within Distance Zone 1.







VP21 - Currytown Road

Existing Conditions

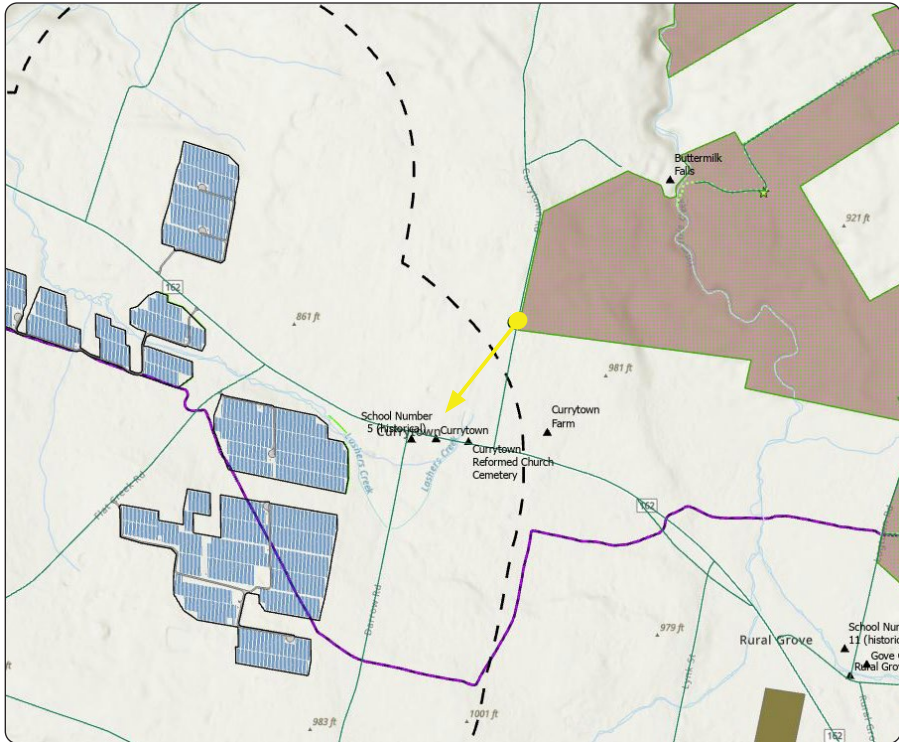


SW

Viewpoint Location Aerial Map



Viewpoint Location Topographic Map



Viewpoint Location Details

Viewpoint Coordinates	42.86283, -74.45954
Town	Root
Landscape Similarity Zone	1,2,3
Distance to Project	0.6 Miles
Direction of View	Southwest
Lens Focal Length	35 mm Equivalent
Date/Time of Photo	3/25/2021, 3:38 PM
Comments	Photo demonstrates view from Yatesville Falls State Forest, Currytown Road (Montgomery County Scenic Byway), and community of Currytown. This is also an ORES suggested VP location from Distance Zone 2.







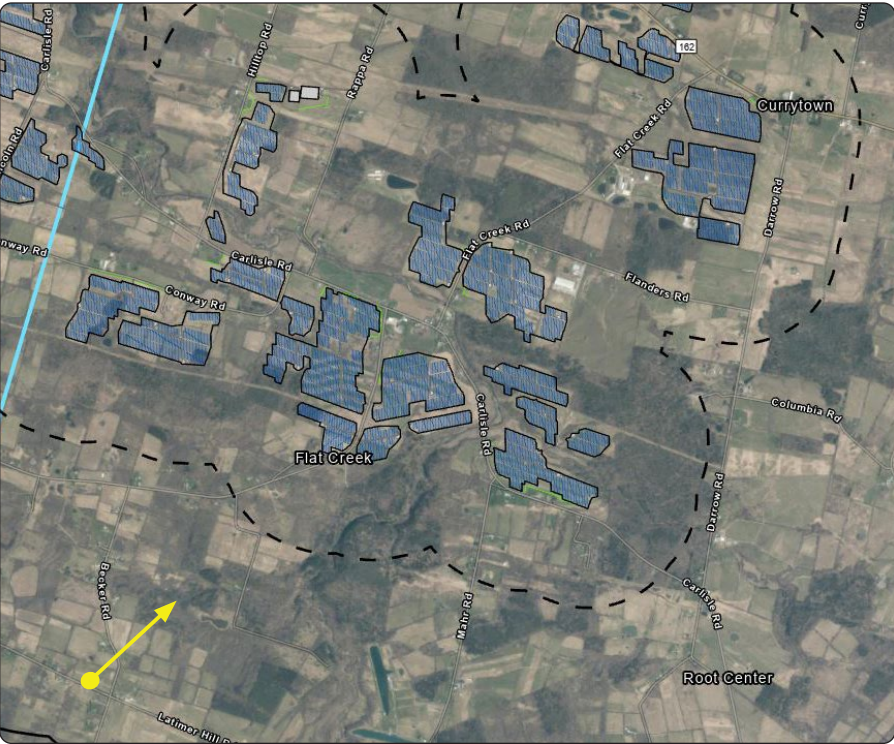
VP23 - Latimer Hill Road

Existing Conditions

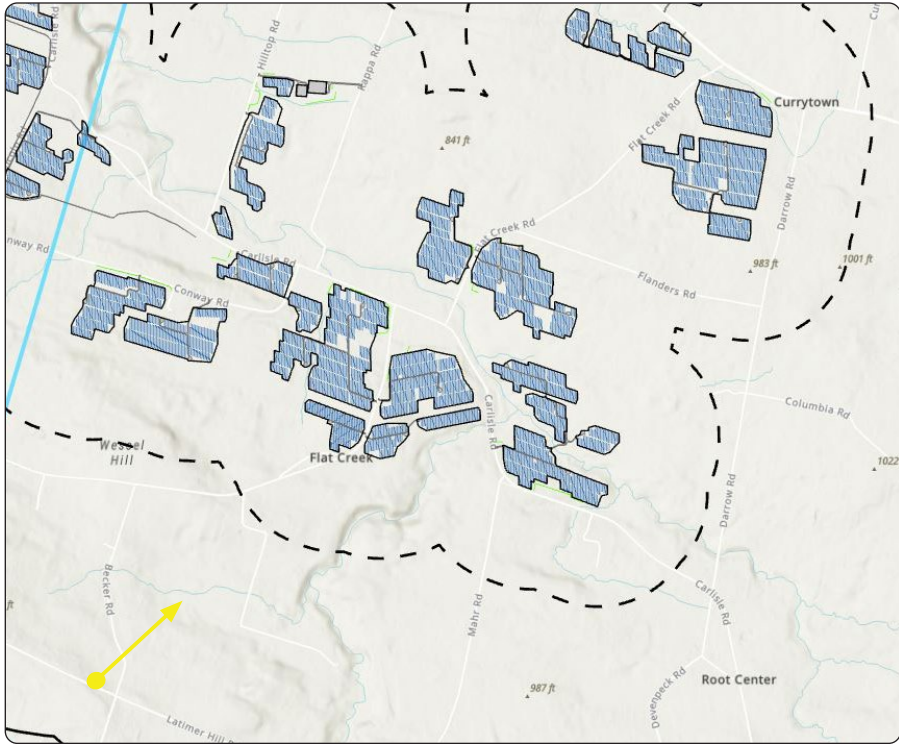


NE

Viewpoint Location Aerial Map



Viewpoint Location Topographic Map



Viewpoint Location Details

Viewpoint Coordinates	42.816721, -74.536628
Town	Root
Landscape Similarity Zone	1,3
Distance to Project	2.65 Miles
Direction of View	Northeast
Lens Focal Length	35 mm Equivalent
Date/Time of Photo	4/7/2021, 3:36 PM
Comments	Photo illustrates vantage point south of the Facility from Distance Zone 2 and depicts potential visibility from Latimer Hill Road (Montgomery County Scenic Byway)







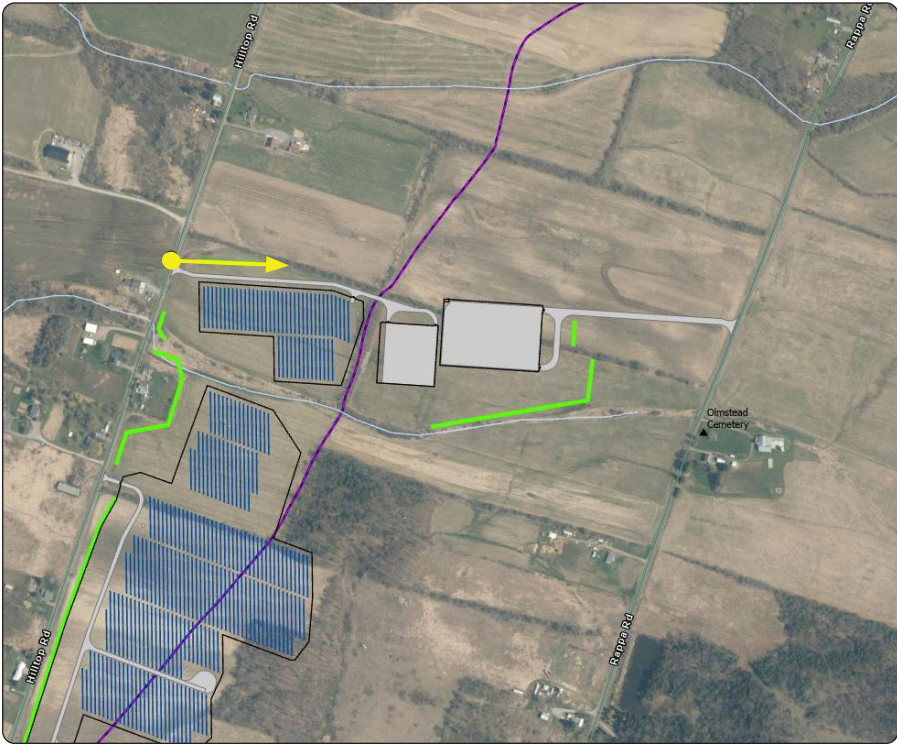
VP31 - Hilltop Road

Existing Conditions

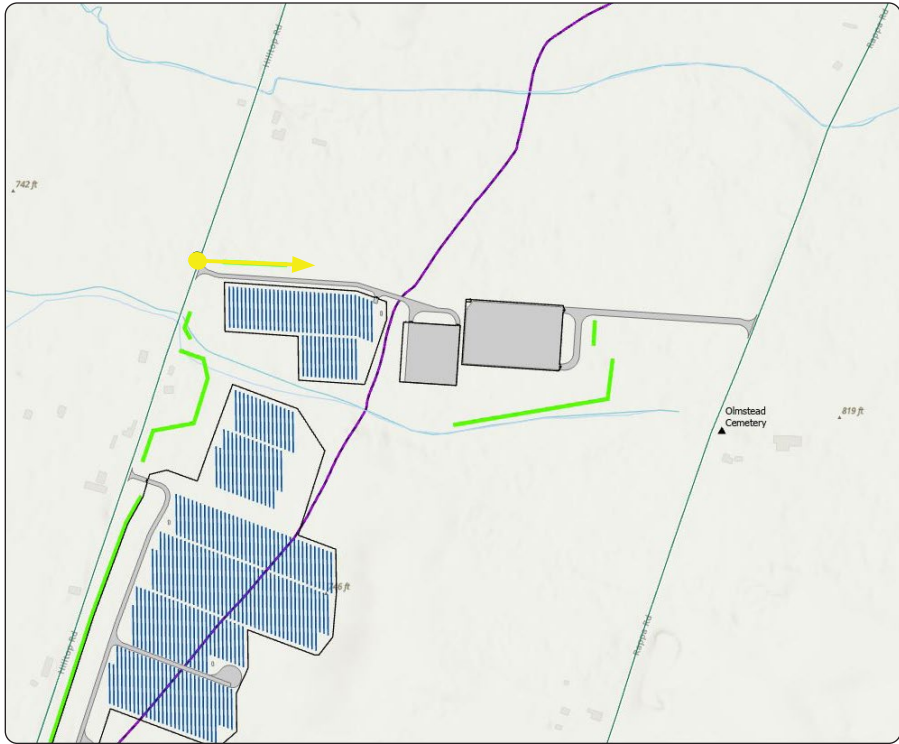


E

Viewpoint Location Aerial Map



Viewpoint Location Topographic Map



Viewpoint Location Details

Viewpoint Coordinates	42.86102, -74.51961
Town	Root
Landscape Similarity Zone	1,3
Distance to Project	225 Feet
Direction of View	East
Lens Focal Length	35 mm Equivalent
Date/Time of Photo	4/11/2022, 9:24 AM
Comments	Adjacent to several residences on Hilltop Road, a Montgomery County Scenic Byway, facing toward the POI Switchyard and Collector Substation. This is also an ORES suggested VP location from Distance Zone 1.







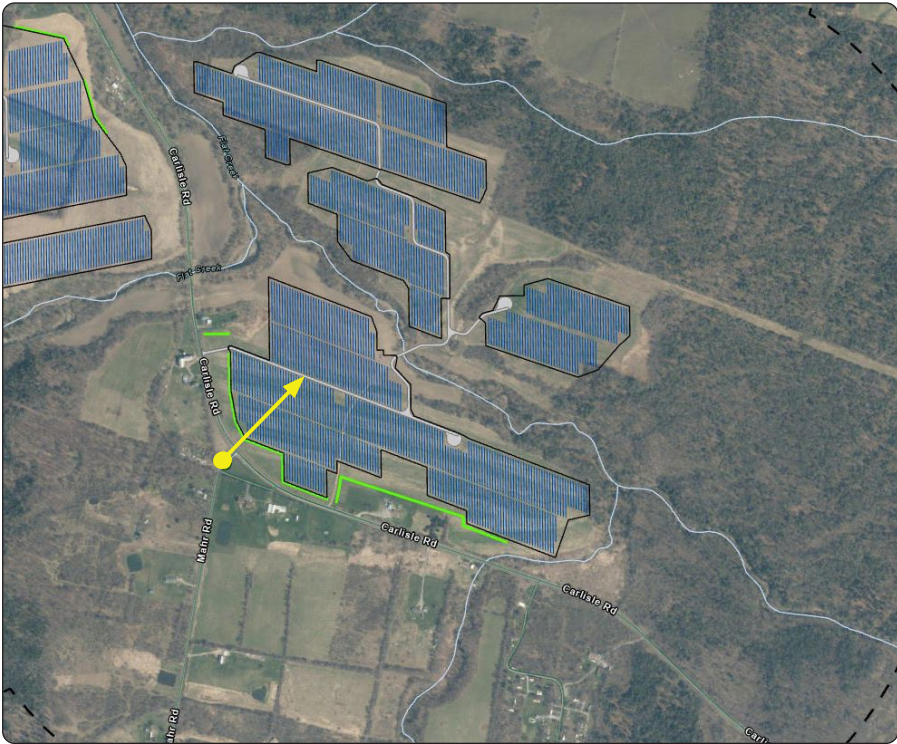
VP48 - Intersection of Carlisle Road and Mahr Road, near the community of Flat Creek

Existing Conditions

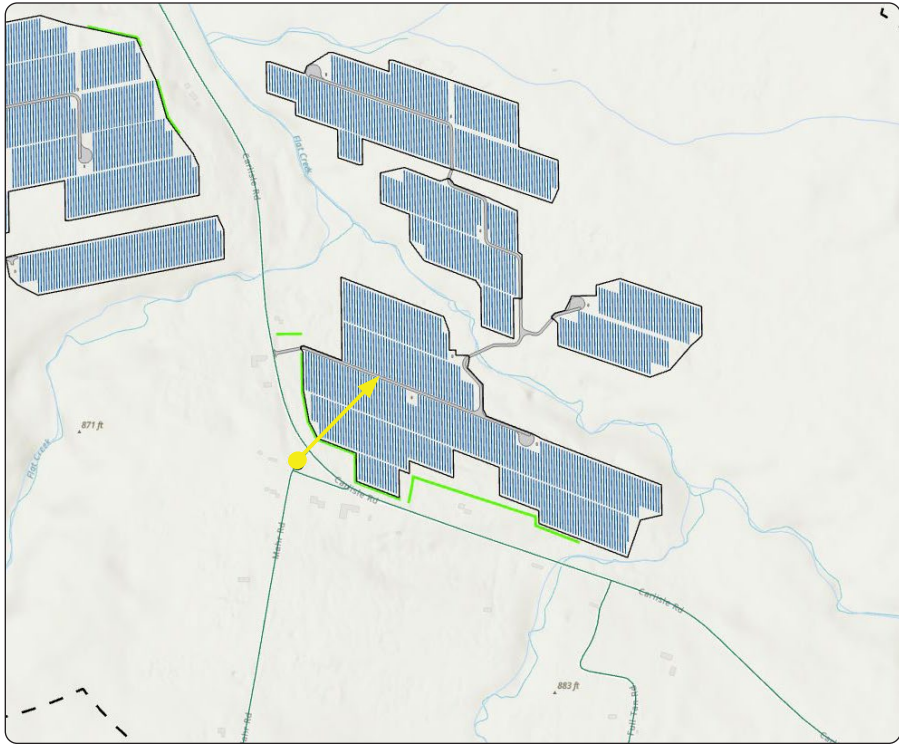


NE

Viewpoint Location Aerial Map



Viewpoint Location Topographic Map



Viewpoint Location Details

Viewpoint Coordinates	42.83128, -74.4961
Town	Root
Landscape Similarity Zone	1,2,3
Distance to Project	250 Feet
Direction of View	Northeast
Lens Focal Length	35 mm Equivalent
Date/Time of Photo	4/11/2022, 1:26 PM
Comments	Demonstrates a representative view from Carlisle Road (306 AADT) near the community of Flat Creek. View is in vicinity to several rural residences within Distance Zone 1.







VP62 - South Gray Road

Existing Conditions

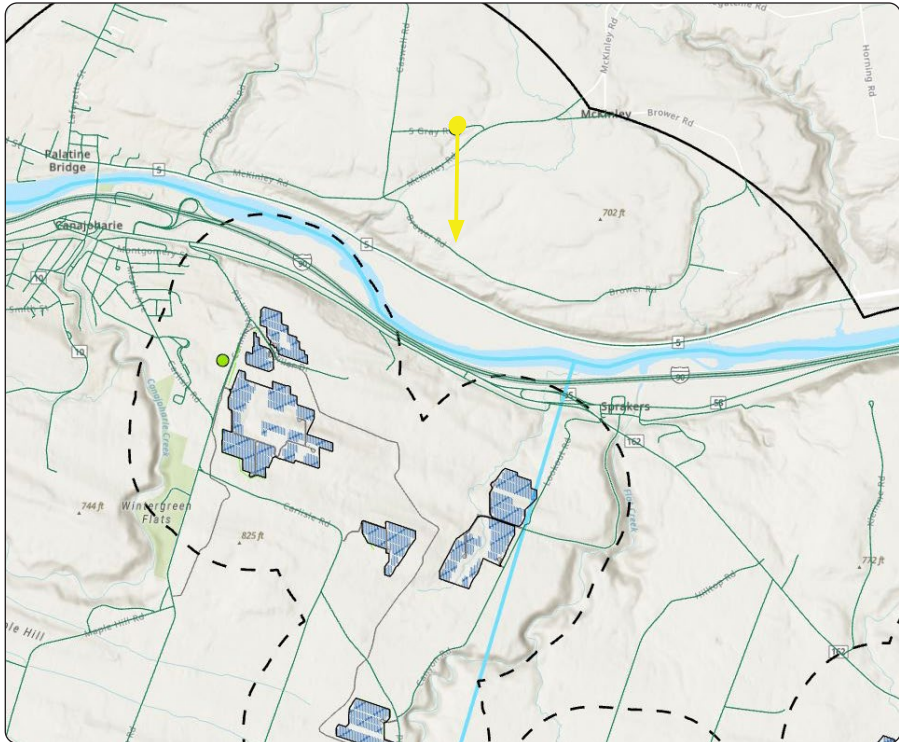


S

Viewpoint Location Aerial Map



Viewpoint Location Topographic Map



Viewpoint Location Details

Viewpoint Coordinates	42.91319, -74.53279
Town	Palatine
Landscape Similarity Zone	1,3
Distance to Project	1.7 Miles
Direction of View	South
Lens Focal Length	35 mm Equivalent
Date/Time of Photo	4/11/2022, 2:58 PM
Comments	Representative view from the community of McKinley from Distance Zone 2. Demonstrative of cumulative effect from the Caswell and South Gray Road Solar Farm and proposed Facility.