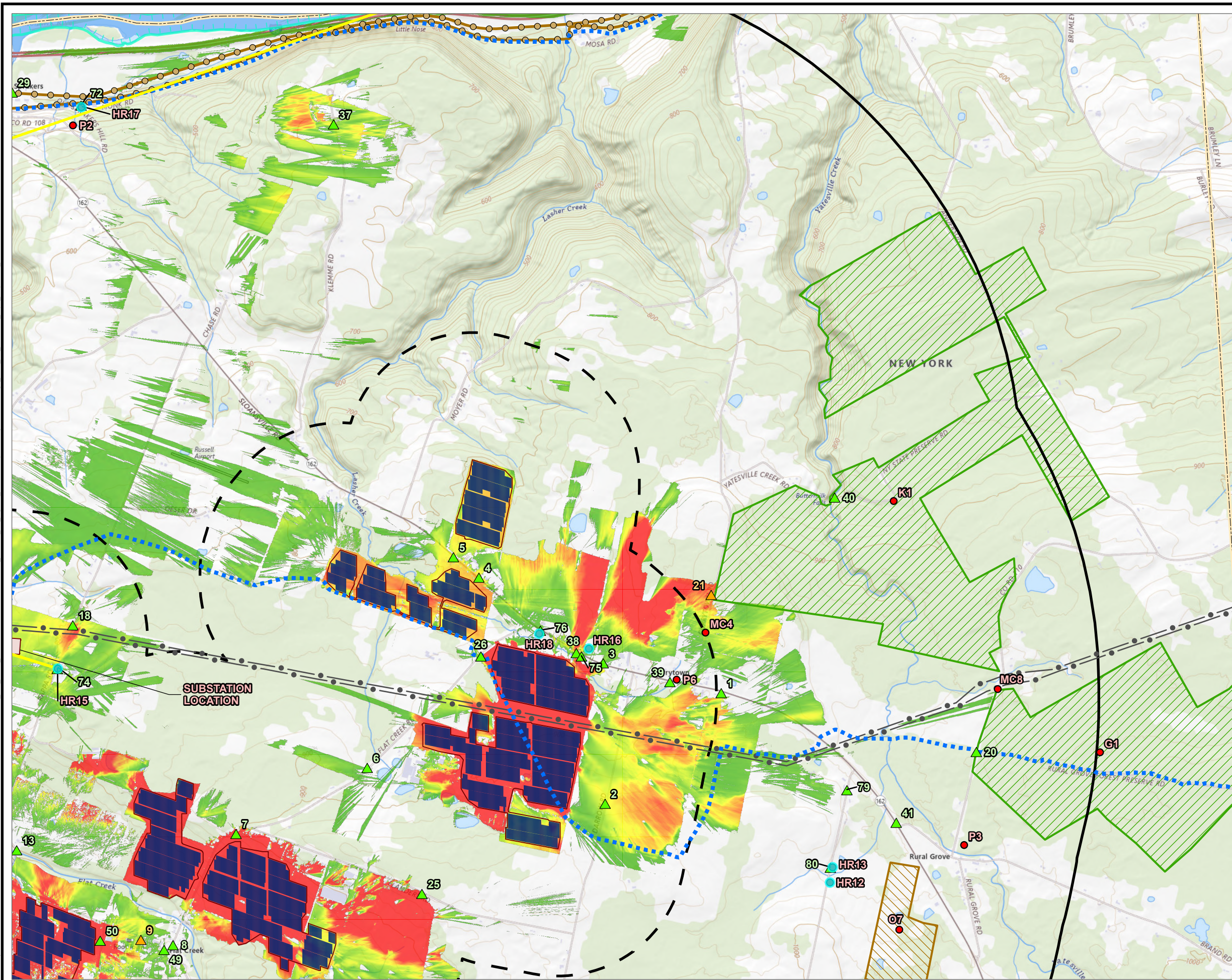


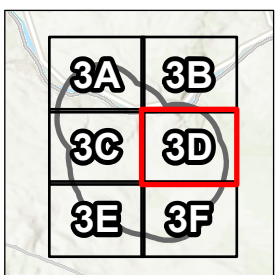
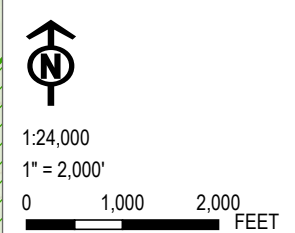
Coordinate System: NAD 1983 StatePlane New York East FIPS 3101 Feet, Map Rotation: 0
-- Saved By: MBILLINGS on 6/28/2024, 15:57:42 PM, File Path: T:\PROJECTS\SunEast\427281 - Flat Creek Solar\9-VISUAL\APRX\FlatCreek_Revised_VS_Figures_June2024.aprx, Layout Name: Fig3_AtoD_PV_Viewshed_Topo_MapSeries_11x17L




- ▲ SIMULATED VIEWPOINT LOCATION (DEF QUERY)
- ▲ VIEWPOINT LOCATION (DEF QUERY)
- AESTHETIC RESOURCES
- ➔ LINE-OF-SIGHT
- REVOLUTIONARY SCENIC BYWAY/ADIRONDACK TRAIL
- NYS SNOWMOBILE TRAILS
- NYS BIKE TRAIL
- EXISTING TRANSMISSION
- DISTANCE ZONE 2 - 0.5 TO 2.0 MILES
- DISTANCE ZONE 1 - 0.0 TO 0.5 MILES
- PROPOSED FENCE LINE
- PROPOSED ARRAY LOCATION
- HISTORIC DISTRICT
- STATE FOREST
- WETLANDS RESERVE PROGRAM PARCEL
- VILLAGE BOUNDARY
- MUNICIPAL BOUNDARY
- POTENTIAL VISIBILITY OF SOLAR ARRAYS
 - MORE PANELS VISIBLE
 - LESS PANELS VISIBLE

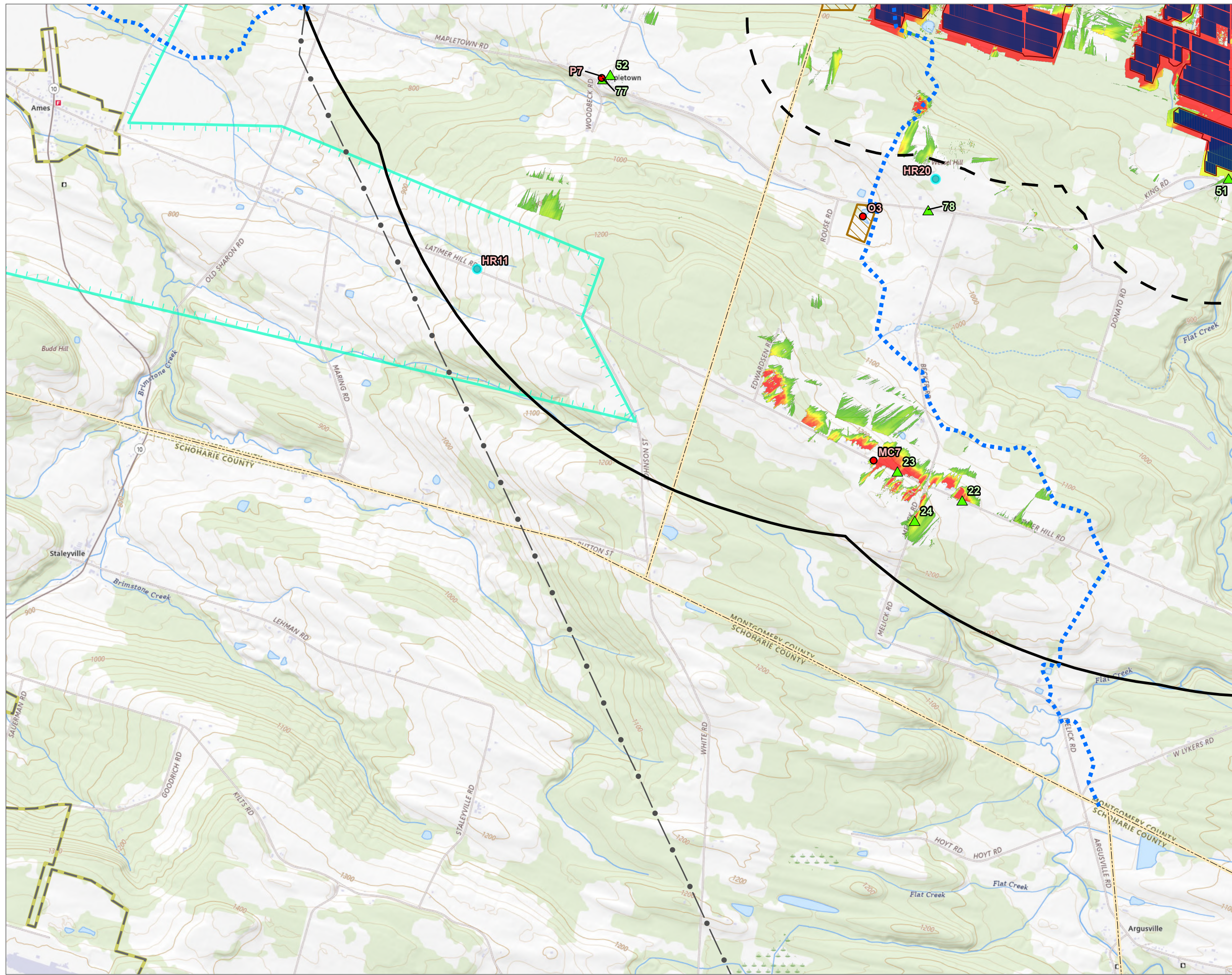
NOTES:
1. THIS FIGURE SHOWS VISIBILITY OF PANELS BASED ON JUNE 2024 PROJECT DESIGN.
2. THE FULL MAP EXTENT SHOWN ON THIS FIGURE IS WITHIN THE ERIE CANALWAY NATIONAL HERITAGE CORRIDOR AND MOHAWK VALLEY STATE HERITAGE CORRIDOR.

BASE MAP: USGS TOPO MAP
DATA SOURCES: TRC



FLAT CREEK SOLAR NY LLC TOWN OF CANAJOHARIE & ROOT MONTGOMERY COUNTY, NY	
TITLE: POTENTIAL VISIBILITY AND VISUAL RESOURCES FOR SOLAR ARRAYS	
DRAWN BY: M. BILLINGS	PROJ. NO.: 427281
CHECKED BY: B. MASTERSON	FIGURE 3D
APPROVED BY: J. BARTOS	
DATE: JULY 2024	
	
10 HEMINGWAY DRIVE 2ND FLOOR EAST PROVIDENCE, RI 02915 PHONE: 401.330.1236	
FILE:	FlatCreek_Revised_VS_Figures_June2024.aprx

Coordinate System: NAD 1983 StatePlane New York East FIPS 3101 Feet, Map Rotation: 0
-- Saved By: MBILLINGS on 6/28/2024, 15:57:42 PM, File Path: T:\1-PROJECTS\SunEast\427281_Flat_Creek_Solar\9-VISUAL\APRX\FlatCreek_Revised_VS_Figures_June2024.aprx, Layout Name: Fig3_AtoD_PV_Viewshed_Topo_MapSeries_11x17L



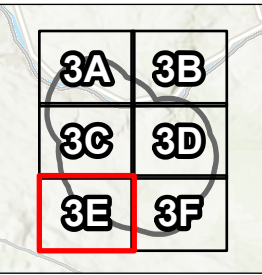
- ▲ SIMULATED VIEWPOINT LOCATION (DEF QUERY)
- ▲ VIEWPOINT LOCATION (DEF QUERY)
- AESTHETIC RESOURCES
- LINE-OF-SIGHT
- REVOLUTIONARY SCENIC BYWAY/ADIRONDACK TRAIL
- NYS SNOWMOBILE TRAILS
- NYS BIKE TRAIL
- EXISTING TRANSMISSION
- DISTANCE ZONE 2 - 0.5 TO 2.0 MILES
- DISTANCE ZONE 1 - 0.0 TO 0.5 MILES
- PROPOSED FENCE LINE
- PROPOSED ARRAY LOCATION
- HISTORIC DISTRICT
- STATE FOREST
- WETLANDS RESERVE PROGRAM PARCEL
- VILLAGE BOUNDARY
- MUNICIPAL BOUNDARY
- POTENTIAL VISIBILITY OF SOLAR ARRAYS
- MORE PANELS VISIBLE
- LESS PANELS VISIBLE


NOTES:
1. THIS FIGURE SHOWS VISIBILITY OF PANELS BASED ON JUNE 2024 PROJECT DESIGN.
2. THE FULL MAP EXTENT SHOWN ON THIS FIGURE IS WITHIN THE ERIE CANALWAY NATIONAL HERITAGE CORRIDOR AND MOHAWK VALLEY STATE HERITAGE CORRIDOR.

BASE MAP: USGS TOPO MAP
DATA SOURCES: TRC

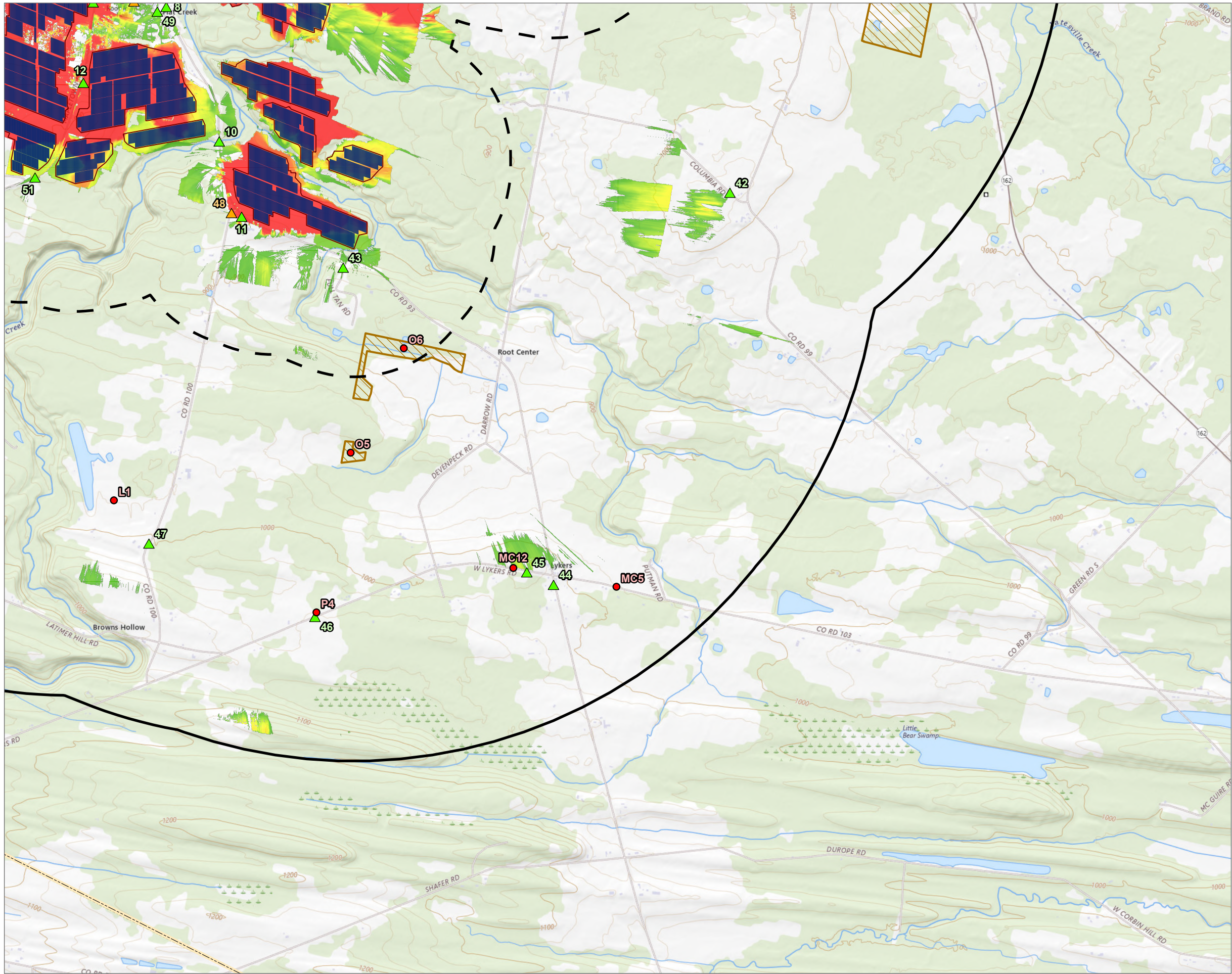


1:24,000
1" = 2,000'
0 1,000 2,000 FEET



FLAT CREEK SOLAR NY LLC TOWN OF CANAJOHARIE & ROOT MONTGOMERY COUNTY, NY			
TITLE: POTENTIAL VISIBILITY AND VISUAL RESOURCES FOR SOLAR ARRAYS			
DRAWN BY: M. BILLINGS		PROJ. NO.: 427281	
CHECKED BY: B. MASTERSON		FIGURE 3E	
APPROVED BY: J. BARTOS			
DATE: JULY 2024			
		10 HEMINGWAY DRIVE 2ND FLOOR EAST PROVIDENCE, RI 02915 PHONE: 401.330.1236	
FILE:		FlatCreek Revised VS_Figures_June2024.aprx	

Coordinate System: NAD 1983 StatePlane New York East FIPS 3101 Feet, Map Rotation: 0
-- Saved By: MBILLINGS on 6/28/2024, 15:57:42 PM, File Path: T:\1-PROJECTS\SunEast\427281_Flat_Creek_Solar\9-VISUAL\APRX\Fig3_Flat_Creek_VS_Figures_June2024.aprx, Layout Name: Fig3_AtoD_PV_Viewshed_Topo_MapSeries_T1xT1L



- SIMULATED VIEWPOINT LOCATION (DEF QUERY)
- VIEWPOINT LOCATION (DEF QUERY)
- AESTHETIC RESOURCES
- LINE-OF-SIGHT
- REVOLUTIONARY SCENIC BYWAY/ADIRONDACK TRAIL
- NYS SNOWMOBILE TRAILS
- NYS BIKE TRAIL
- EXISTING TRANSMISSION
- DISTANCE ZONE 2 - 0.5 TO 2.0 MILES
- DISTANCE ZONE 1 - 0.0 TO 0.5 MILES
- PROPOSED FENCE LINE
- PROPOSED ARRAY LOCATION
- HISTORIC DISTRICT
- STATE FOREST
- WETLANDS RESERVE PROGRAM PARCEL
- VILLAGE BOUNDARY
- MUNICIPAL BOUNDARY
- POTENTIAL VISIBILITY OF SOLAR ARRAYS**
 - MORE PANELS VISIBLE
 - LESS PANELS VISIBLE

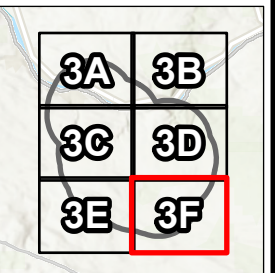
NOTES:
1. THIS FIGURE SHOWS VISIBILITY OF PANELS BASED ON JUNE 2024 PROJECT DESIGN.
2. THE FULL MAP EXTENT SHOWN ON THIS FIGURE IS WITHIN THE ERIE CANALWAY NATIONAL HERITAGE CORRIDOR AND MOHAWK VALLEY STATE HERITAGE CORRIDOR.

BASE MAP: USGS TOPO MAP
DATA SOURCES: TRC



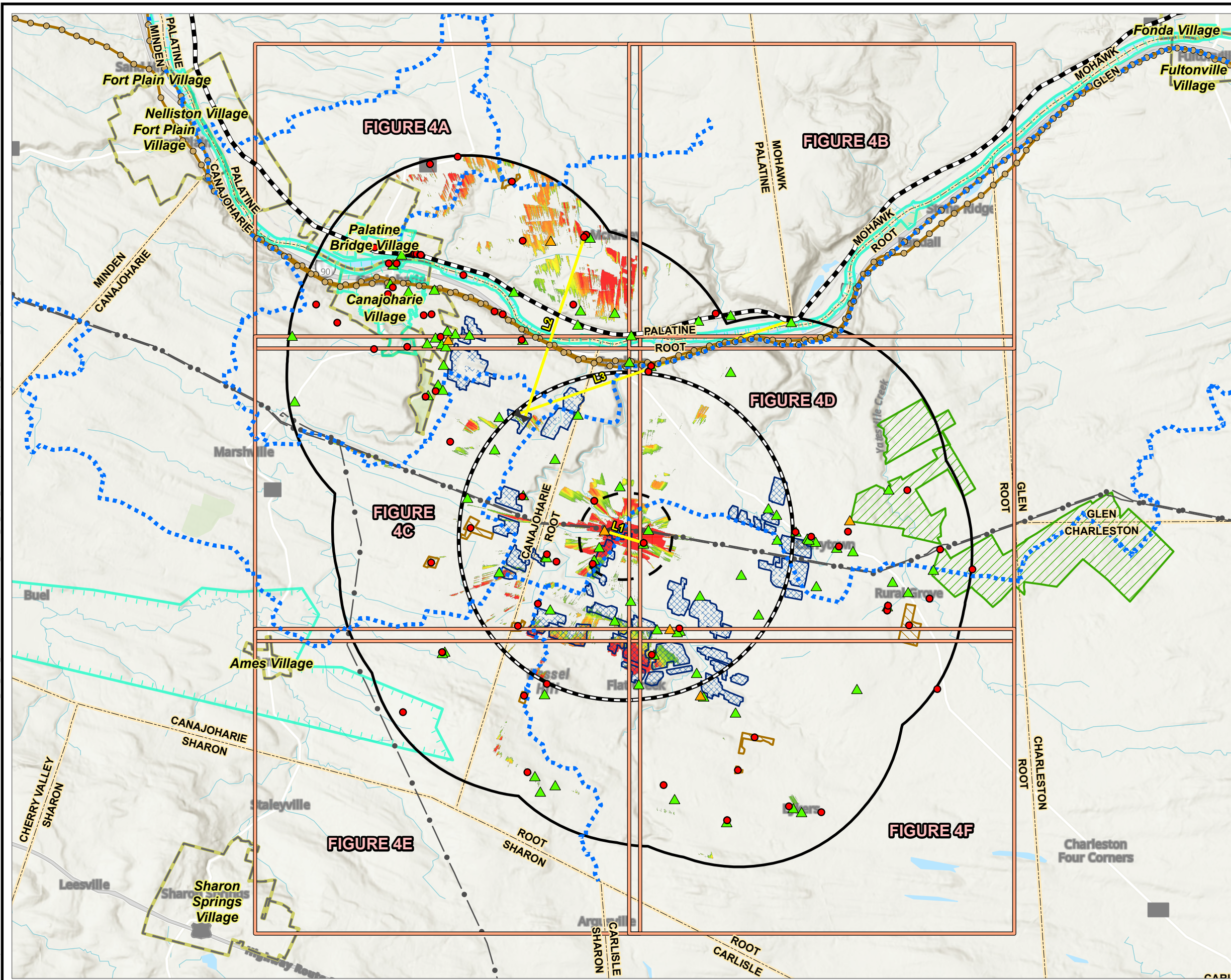
1:24,000
1" = 2,000'

0 1,000 2,000 FEET



FLAT CREEK SOLAR NY LLC TOWN OF CANAJOHARIE & ROOT MONTGOMERY COUNTY, NY			
TITLE:		POTENTIAL VISIBILITY AND VISUAL RESOURCES FOR SOLAR ARRAYS	
DRAWN BY:	M. BILLINGS	PROJ. NO.:	427281
CHECKED BY:	B. MASTERSON	FIGURE 3F	
APPROVED BY:	J. BARTOS		
DATE:	JULY 2024		
		10 HEMINGWAY DRIVE 2ND FLOOR EAST PROVIDENCE, RI 02915 PHONE: 401.330.1236	
FILE:		FlatCreek Revised VS_Figures_June2024.aprx	

Coordinate System: NAD 1983 StatePlane New York East FIPS 3101 Feet, Map Rotation: 0
-- Saved By: MBILLINGS on 6/28/2024, 15:57:42 PM, File Path: T:\1-PROJECTS\SunEast\427281-Flat Creek, Solar\9-VISUAL\APRX\Fig4_POT_Visual_VS_Figures_June2024.aprx, Layout Name: Fig4_POT_Visual_VS_Figures_June2024.aprx, Layer: VS_Figures_June2024.aprx




- VIEWPOINT LOCATION
 - SIMULATED VIEWPOINT LOCATION
 - AESTHETIC RESOURCES
 - NYS BIKE TRAIL
 - NYS SNOWMOBILE TRAILS
 - REVOLUTIONARY SCENIC BYWAY/ADIRONDACK TRAIL
 - PROPOSED FENCE LINE
 - PROPOSED ARRAY LOCATION
 - MAP INDEX
 - LINE-OF-SIGHT
 - HISTORIC DISTRICT
 - STATE FOREST
 - WETLANDS RESERVE PROGRAM PARCEL
 - EXISTING TRANSMISSION
 - VILLAGE BOUNDARY
 - MUNICIPAL BOUNDARY
 - POI - 0.0 TO 0.5 MILES
 - POI - 0.5 TO 2 MILES
 - VISUAL STUDY AREA
- POTENTIAL VISIBILITY OF SUBSTATION, POI, AND TRANSMISSION STRUCTURES
- MORE POI VISIBLE
- LESS POI VISIBLE

NOTES:
1. THIS FIGURE SHOWS VISIBILITY OF COLLECTOR SUBSTATION, NYPA POI SWITCHYARD, AND TRANSMISSION STRUCTURES BASED ON JUNE 2024 PROJECT DESIGN.
2. THE FULL MAP EXTENT SHOWN ON THIS FIGURE IS WITHIN THE ERIE CANALWAY NATIONAL HERITAGE CORRIDOR AND MOHAWK VALLEY STATE HERITAGE CORRIDOR.

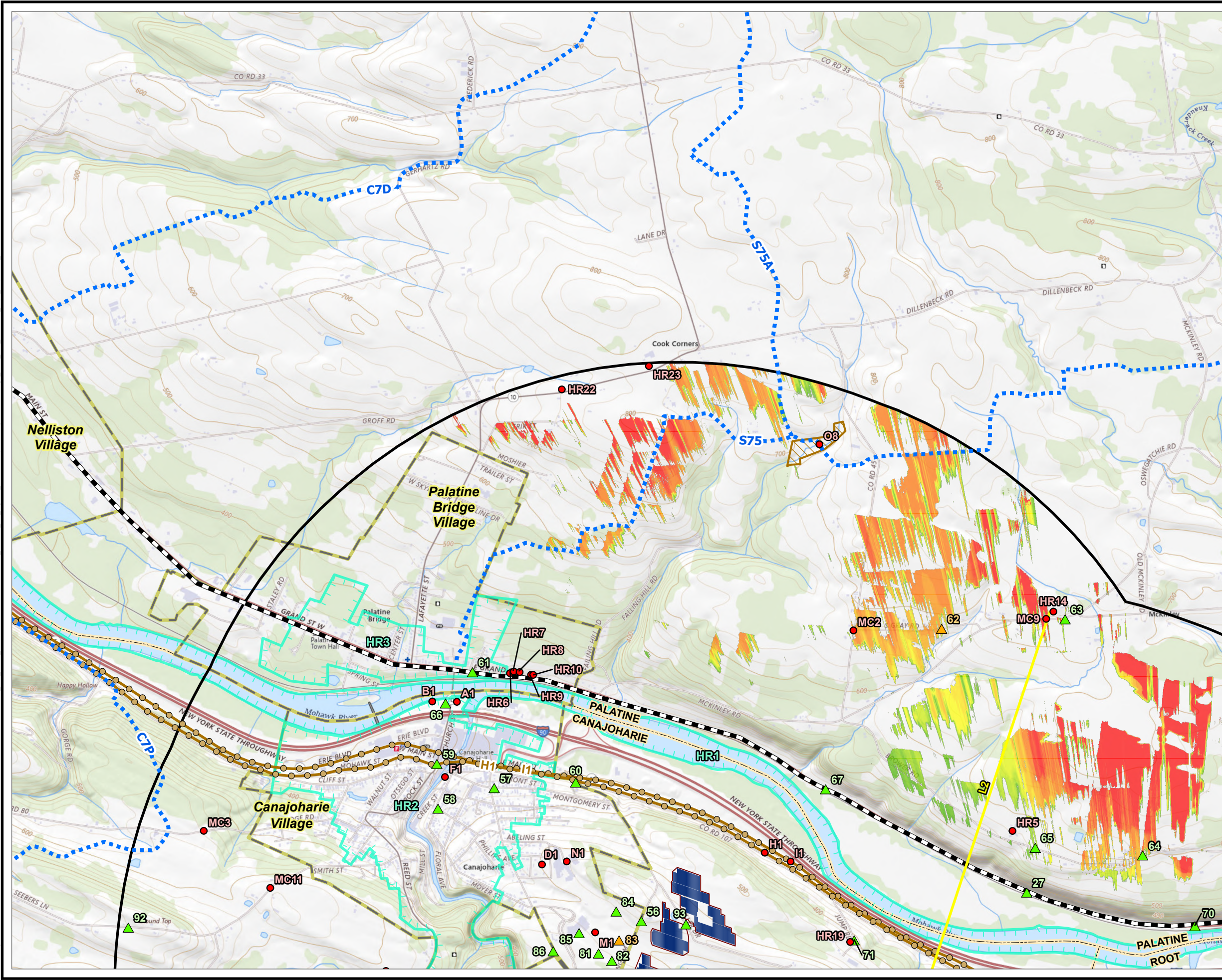
BASE MAP: USGS TOPO MAP
DATA SOURCES: TRC



1:76,032
1 INCH = 1.2 MILES
0 0.6 1.2 MILES

FLAT CREEK SOLAR NY LLC TOWN OF CANAJOHARIE & ROOT MONTGOMERY COUNTY, NY		
TITLE: POTENTIAL VISIBILITY AND VISUAL RESOURCES FOR COLLECTOR SUBSTATION, POI SWITCHYARD, AND TRANSMISSION STRUCTURES		
DRAWN BY:	M. BILLINGS	PROJ. NO.: 427281
CHECKED BY:	B. MASTERSON	FIGURE 4
APPROVED BY:	J. BARTOS	
DATE:	JULY 2024	
		10 HEMINGWAY DRIVE 2ND FLOOR EAST PROVIDENCE, RI 02915 PHONE: 401.330.1236
FILE: FlatCreek Revised VS_Figures_June2024.aprx		

Coordinate System: NAD 1983 StatePlane New York East FIPS 3101 Feet. Map Rotation: 0
-- Saved By: MBILLINGS on 6/28/2024, 15:57:42 PM. File Path: T:\PROJECTS\SunEast\427281_Flat_Creek_Solar\VISUAL\APRX\Fig4_Creek_VS_Figures_June2024.aprx. Layout Name: Fig4_AtoD_POI_Viewshed_Topo_MapSeries_11x17L



- SIMULATED VIEWPOINT LOCATION
 - VIEWPOINT LOCATION
 - AESTHETIC RESOURCES
 - LINE-OF-SIGHT
 - REVOLUTIONARY SCENIC BYWAY/ADIRONDACK TRAIL
 - NYS SNOWMOBILE TRAILS
 - NYS BIKE TRAIL
 - EXISTING TRANSMISSION
 - PROPOSED FENCE LINE
 - PROPOSED ARRAY LOCATION
 - HISTORIC DISTRICT
 - STATE FOREST
 - WETLANDS RESERVE PROGRAM PARCEL
 - VILLAGE BOUNDARY
 - MUNICIPAL BOUNDARY
 - POI - 0.5 TO 2 MILES
 - POI - 0.0 TO 0.5 MILES
 - VISUAL STUDY AREA
- POTENTIAL VISIBILITY OF SUBSTATION, POI, AND TRANSMISSION STRUCTURES
- MORE POI VISIBLE
 - LESS POI VISIBLE

NOTES:
1. THIS FIGURE SHOWS VISIBILITY OF COLLECTOR SUBSTATION, NYPA POI SWITCHYARD, AND TRANSMISSION STRUCTURES BASED ON JUNE 2024 PROJECT DESIGN.
2. THE FULL MAP EXTENT SHOWN ON THIS FIGURE IS WITHIN THE ERIE CANALWAY NATIONAL HERITAGE CORRIDOR AND MOHAWK VALLEY STATE HERITAGE CORRIDOR.

BASE MAP: USGS TOPO MAP
DATA SOURCES: TRC

N

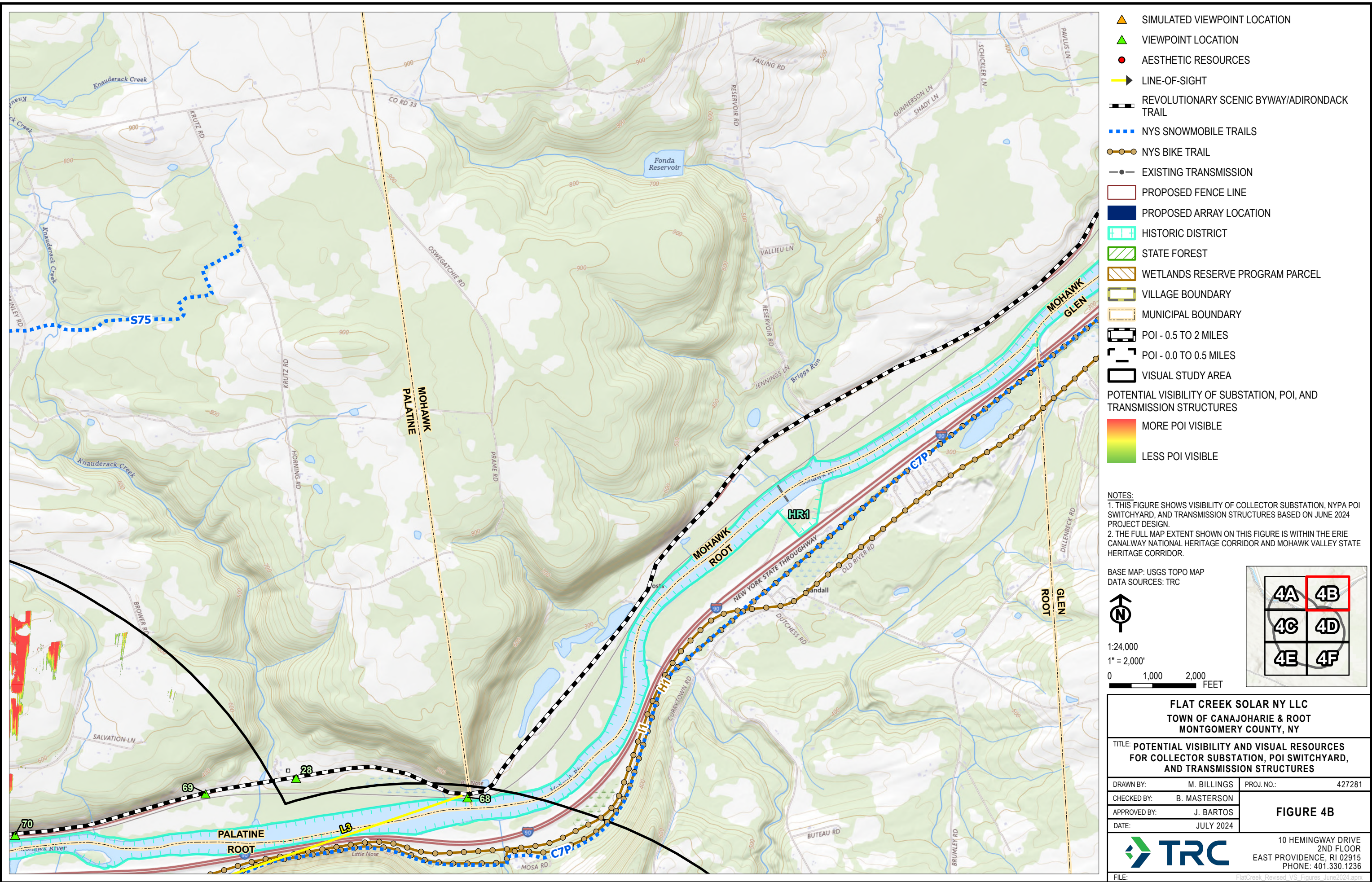
1:24,000
1" = 2,000'

0 1,000 2,000 FEET

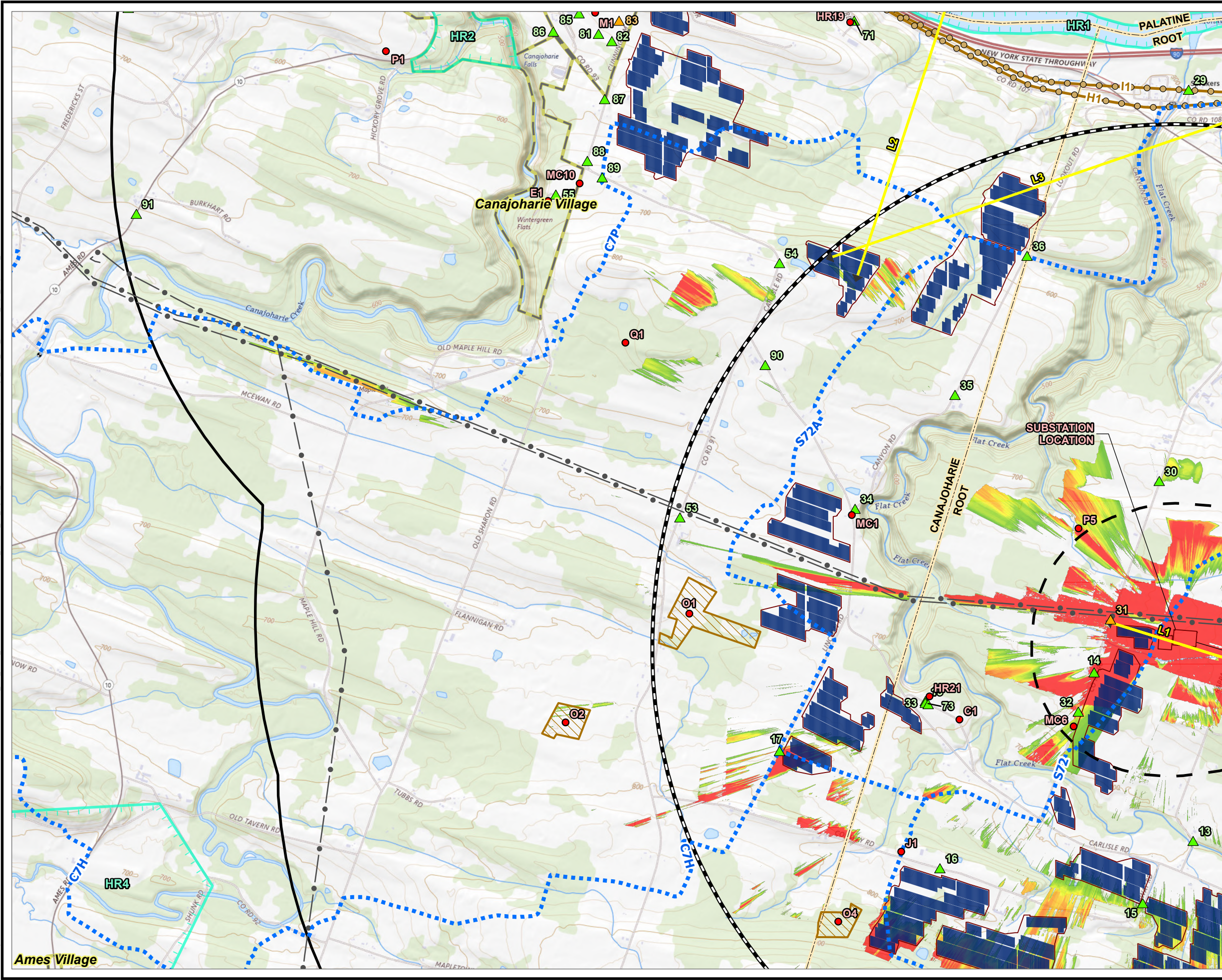
4A	4B
4C	4D
4E	4F

FLAT CREEK SOLAR NY LLC TOWN OF CANAJOHARIE & ROOT MONTGOMERY COUNTY, NY	
TITLE: POTENTIAL VISIBILITY AND VISUAL RESOURCES FOR COLLECTOR SUBSTATION, POI SWITCHYARD, AND TRANSMISSION STRUCTURES	
DRAWN BY: M. BILLINGS	PROJ. NO.: 427281
CHECKED BY: B. MASTERSON	FIGURE 4A
APPROVED BY: J. BARTOS	
DATE: JULY 2024	
TRC	
10 HEMINGWAY DRIVE 2ND FLOOR EAST PROVIDENCE, RI 02915 PHONE: 401.330.1236	
FILE:	FlatCreek Revised VS_Figures_June2024.aprx

Coordinate System: NAD 1983 StatePlane New York East FIPS 3101 Feet, Map Rotation: 0
-- Saved By: MBILLINGS on 6/28/2024, 15:57:42 PM, File Path: T:\1-PROJECTS\SunEast\427281_Flat_Creek_Solar\9-VISUAL\APRX\FlatCreek_Revised_VS_Figures_June2024.aprx, Layout Name: Fig4_AtoD_POI_Viewshed_Topo_Mapseries_11x17L



Coordinate System: NAD 1983 StatePlane New York East FIPS 3101 Feet, Map Rotation: 0
-- Saved By: MBILLINGS on 6/28/2024, 15:57:42 PM, File Path: T:\1-PROJECTS\SunEast\427281_Flat_Creek_Solar\9-VISUAL\APRX\FlatCreek_Revised_VS_Figures_June2024.aprx, Layout Name: Fig4_AtoD_POI_Viewshed_Topo_MapSeries_11x17L



- ▲ SIMULATED VIEWPOINT LOCATION
- ▲ VIEWPOINT LOCATION
- AESTHETIC RESOURCES
- LINE-OF-SIGHT
- REVOLUTIONARY SCENIC BYWAY/ADIRONDACK TRAIL
- NYS SNOWMOBILE TRAILS
- NYS BIKE TRAIL
- EXISTING TRANSMISSION
- PROPOSED FENCE LINE
- PROPOSED ARRAY LOCATION
- HISTORIC DISTRICT
- STATE FOREST
- WETLANDS RESERVE PROGRAM PARCEL
- VILLAGE BOUNDARY
- MUNICIPAL BOUNDARY
- POI - 0.5 TO 2 MILES
- POI - 0.0 TO 0.5 MILES
- VISUAL STUDY AREA
- POTENTIAL VISIBILITY OF SUBSTATION, POI, AND TRANSMISSION STRUCTURES
- MORE POI VISIBLE
- LESS POI VISIBLE


NOTES:
1. THIS FIGURE SHOWS VISIBILITY OF COLLECTOR SUBSTATION, NYPA POI SWITCHYARD, AND TRANSMISSION STRUCTURES BASED ON JUNE 2024 PROJECT DESIGN.
2. THE FULL MAP EXTENT SHOWN ON THIS FIGURE IS WITHIN THE ERIE CANALWAY NATIONAL HERITAGE CORRIDOR AND MOHAWK VALLEY STATE HERITAGE CORRIDOR.

BASE MAP: USGS TOPO MAP
DATA SOURCES: TRC

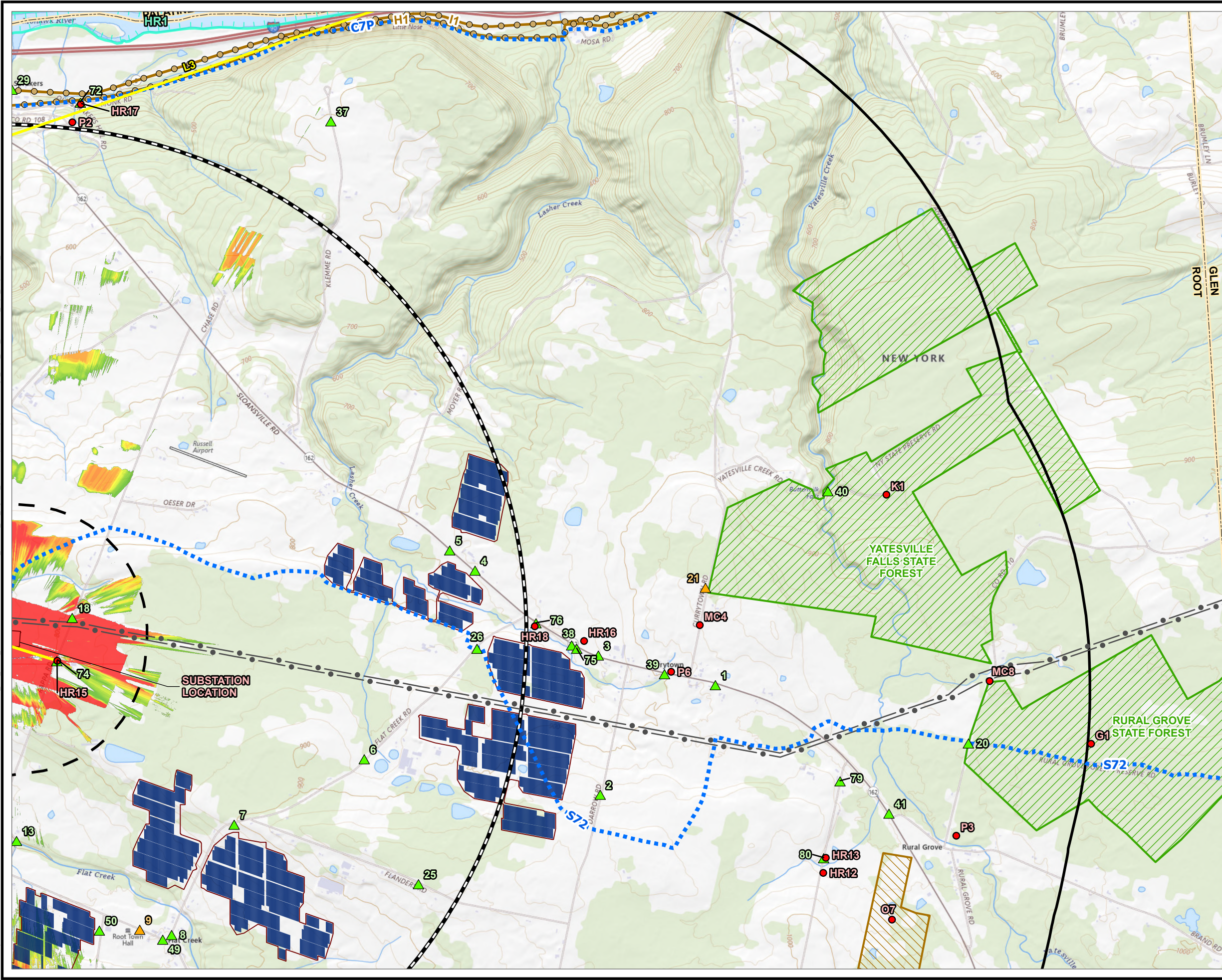
1:24,000
1" = 2,000'
0 1,000 2,000 FEET

↑ N

4A	4B
4C	4D
4E	4F

FLAT CREEK SOLAR NY LLC TOWN OF CANAJOHARIE & ROOT MONTGOMERY COUNTY, NY	
TITLE: POTENTIAL VISIBILITY AND VISUAL RESOURCES FOR COLLECTOR SUBSTATION, POI SWITCHYARD, AND TRANSMISSION STRUCTURES	
DRAWN BY: M. BILLINGS	PROJ. NO.: 427281
CHECKED BY: B. MASTERSON	FIGURE 4C
APPROVED BY: J. BARTOS	
DATE: JULY 2024	
 10 HEMINGWAY DRIVE 2ND FLOOR EAST PROVIDENCE, RI 02915 PHONE: 401.330.1236	
FILE: FlatCreek Revised VS_Figures_June2024.aprx	

Coordinate System: NAD 1983 StatePlane New York East FIPS 3101 Feet. Map Rotation: 0
-- Saved By: MBILLINGS on 6/28/2024, 15:57:42 PM. File Path: T:\PROJECTS\SunEast\427281 - Flat Creek Solar\VISUAL\APRX\FlatCreek_Revised_VS_Figures_June2024.aprx. Layout Name: Fig4_AtoD_POI_Viewshed_Topo_MapSeries_11x17L



- ▲ SIMULATED VIEWPOINT LOCATION
 - ▲ VIEWPOINT LOCATION
 - AESTHETIC RESOURCES
 - ➔ LINE-OF-SIGHT
 - REVOLUTIONARY SCENIC BYWAY/ADIRONDACK TRAIL
 - NYS SNOWMOBILE TRAILS
 - NYS BIKE TRAIL
 - EXISTING TRANSMISSION
 - PROPOSED FENCE LINE
 - PROPOSED ARRAY LOCATION
 - ▨ HISTORIC DISTRICT
 - ▨ STATE FOREST
 - ▨ WETLANDS RESERVE PROGRAM PARCEL
 - ▨ VILLAGE BOUNDARY
 - ▨ MUNICIPAL BOUNDARY
 - 🚚 POI - 0.5 TO 2 MILES
 - 🚚 POI - 0.0 TO 0.5 MILES
 - 📏 VISUAL STUDY AREA
- POTENTIAL VISIBILITY OF SUBSTATION, POI, AND TRANSMISSION STRUCTURES
- 🔴 MORE POI VISIBLE
- 🟢 LESS POI VISIBLE


NOTES:
1. THIS FIGURE SHOWS VISIBILITY OF COLLECTOR SUBSTATION, NYPA POI SWITCHYARD, AND TRANSMISSION STRUCTURES BASED ON JUNE 2024 PROJECT DESIGN.
2. THE FULL MAP EXTENT SHOWN ON THIS FIGURE IS WITHIN THE ERIE CANALWAY NATIONAL HERITAGE CORRIDOR AND MOHAWK VALLEY STATE HERITAGE CORRIDOR.

BASE MAP: USGS TOPO MAP
DATA SOURCES: TRC

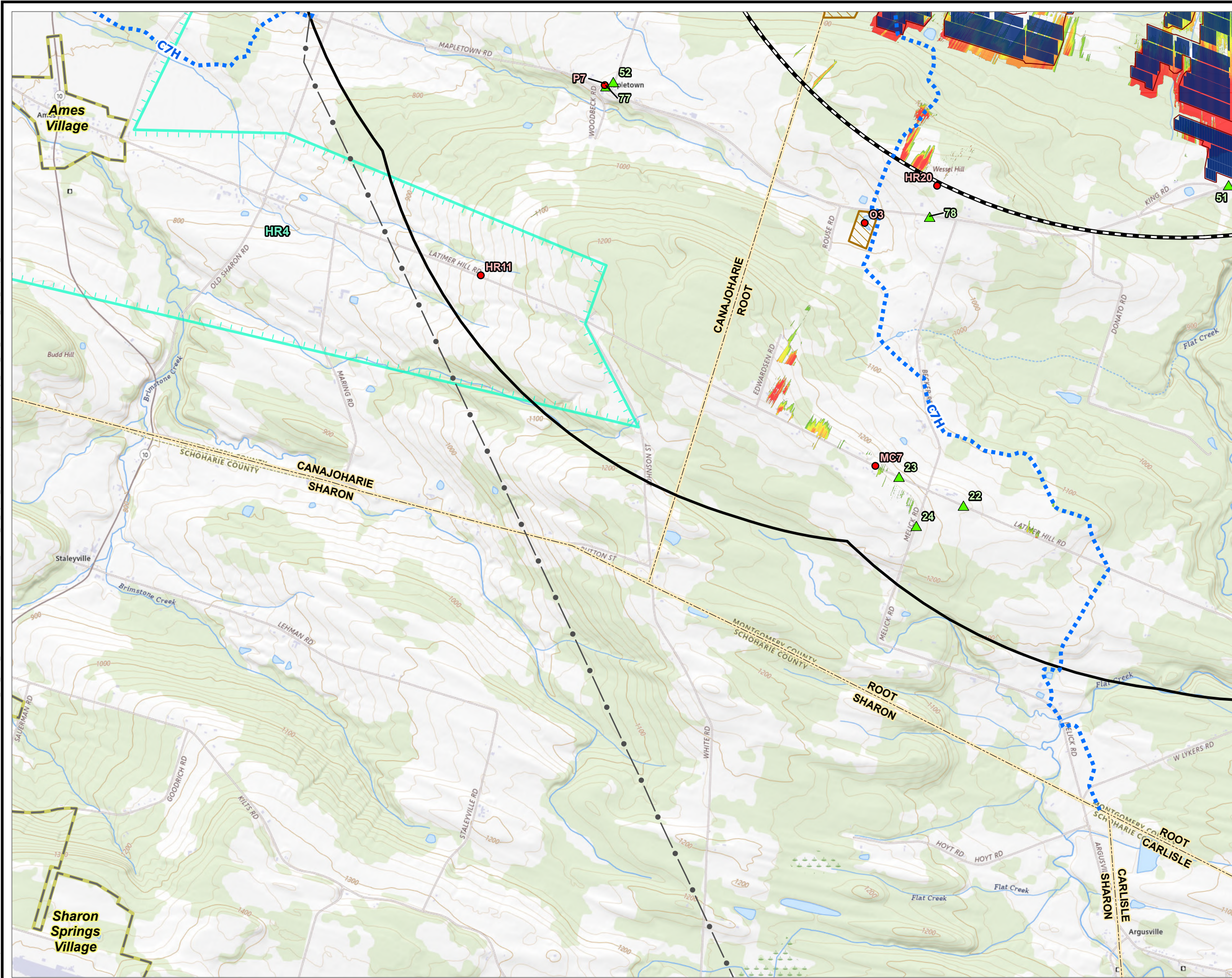
📍

1:24,000
1" = 2,000'
0 1,000 2,000 FEET

4A	4B
4C	4D
4E	4F

FLAT CREEK SOLAR NY LLC TOWN OF CANAJOHARIE & ROOT MONTGOMERY COUNTY, NY	
TITLE: POTENTIAL VISIBILITY AND VISUAL RESOURCES FOR COLLECTOR SUBSTATION, POI SWITCHYARD, AND TRANSMISSION STRUCTURES	
DRAWN BY: M. BILLINGS	PROJ. NO.: 427281
CHECKED BY: B. MASTERSON	FIGURE 4D
APPROVED BY: J. BARTOS	
DATE: JULY 2024	
 10 HEMINGWAY DRIVE 2ND FLOOR EAST PROVIDENCE, RI 02915 PHONE: 401.330.1236	
FILE: FlatCreek_Revised_VS_Figures_June2024.aprx	

Coordinate System: NAD 1983 StatePlane New York East FIPS 3101 Feet. Map Rotation: 0
-- Saved By: MBILLINGS on 6/28/2024, 15:57:42 PM. File Path: T:\1-PROJECTS\SunEast\427281_Flat_Creek_Solar\9-VISUAL\APRX\FlatCreek_Revised_VS_Figures_June2024.aprx. Layout Name: Fig4_AtoD_POI_Viewshed_Topo_MapSeries_11x17L



- ▲ SIMULATED VIEWPOINT LOCATION
- ▲ VIEWPOINT LOCATION
- AESTHETIC RESOURCES
- ➔ LINE-OF-SIGHT
- REVOLUTIONARY SCENIC BYWAY/ADIRONDACK TRAIL
- NYS SNOWMOBILE TRAILS
- NYS BIKE TRAIL
- EXISTING TRANSMISSION
- PROPOSED FENCE LINE
- PROPOSED ARRAY LOCATION
- ▨ HISTORIC DISTRICT
- ▨ STATE FOREST
- ▨ WETLANDS RESERVE PROGRAM PARCEL
- ▨ VILLAGE BOUNDARY
- ▨ MUNICIPAL BOUNDARY
- ⬢ POI - 0.5 TO 2 MILES
- ⬢ POI - 0.0 TO 0.5 MILES
- ⬢ VISUAL STUDY AREA
- POTENTIAL VISIBILITY OF SUBSTATION, POI, AND TRANSMISSION STRUCTURES
- MORE POI VISIBLE
- LESS POI VISIBLE


NOTES:
1. THIS FIGURE SHOWS VISIBILITY OF COLLECTOR SUBSTATION, NYPA POI SWITCHYARD, AND TRANSMISSION STRUCTURES BASED ON JUNE 2024 PROJECT DESIGN.
2. THE FULL MAP EXTENT SHOWN ON THIS FIGURE IS WITHIN THE ERIE CANALWAY NATIONAL HERITAGE CORRIDOR AND MOHAWK VALLEY STATE HERITAGE CORRIDOR.

BASE MAP: USGS TOPO MAP
DATA SOURCES: TRC

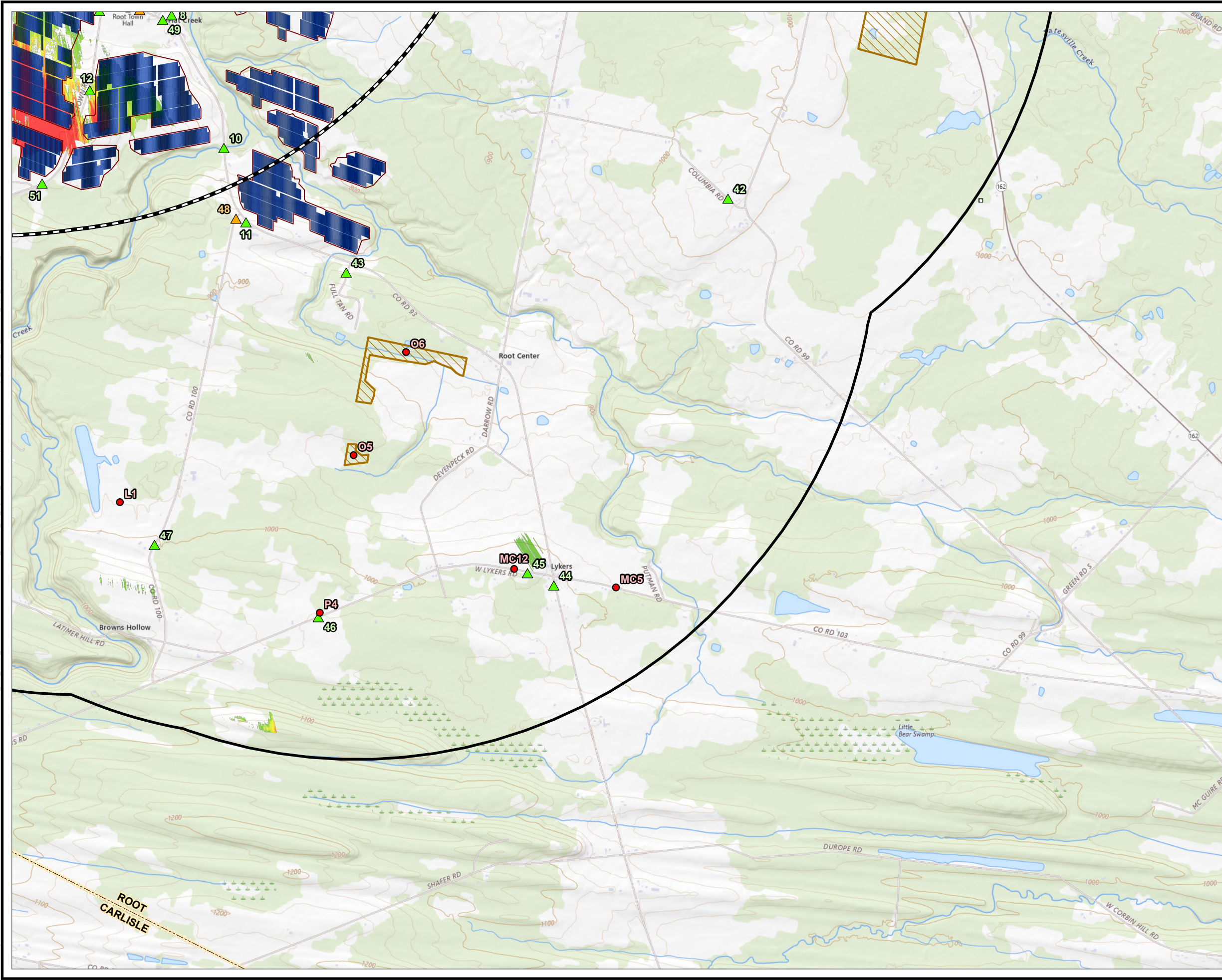
1:24,000
1" = 2,000'
0 1,000 2,000 FEET

↑ N

4A	4B
4C	4D
4E	4F

FLAT CREEK SOLAR NY LLC TOWN OF CANAJOHARIE & ROOT MONTGOMERY COUNTY, NY	
TITLE: POTENTIAL VISIBILITY AND VISUAL RESOURCES FOR COLLECTOR SUBSTATION, POI SWITCHYARD, AND TRANSMISSION STRUCTURES	
DRAWN BY: M. BILLINGS	PROJ. NO.: 427281
CHECKED BY: B. MASTERSON	FIGURE 4E
APPROVED BY: J. BARTOS	
DATE: JULY 2024	
 10 HEMINGWAY DRIVE 2ND FLOOR EAST PROVIDENCE, RI 02915 PHONE: 401.330.1236	
FILE:	FlatCreek Revised VS_Figures_June2024.aprx

Coordinate System: NAD 1983 StatePlane New York East FIPS 3101 Feet. Map Rotation: 0
-- Saved By: MBILLINGS on 6/28/2024, 15:57:42 PM. File Path: T:\1-PROJECTS\SunEast\427281_Flat_Creek_Solar\9-VISUAL\APRX\Fig4_Flat_Creek_VS_Figures_June2024.aprx. Layout Name: Fig4_AtoD_POI_Viewshed_Topo_MapSeries_11x17L



- SIMULATED VIEWPOINT LOCATION
 - VIEWPOINT LOCATION
 - AESTHETIC RESOURCES
 - LINE-OF-SIGHT
 - REVOLUTIONARY SCENIC BYWAY/ADIRONDACK TRAIL
 - NYS SNOWMOBILE TRAILS
 - NYS BIKE TRAIL
 - EXISTING TRANSMISSION
 - PROPOSED FENCE LINE
 - PROPOSED ARRAY LOCATION
 - HISTORIC DISTRICT
 - STATE FOREST
 - WETLANDS RESERVE PROGRAM PARCEL
 - VILLAGE BOUNDARY
 - MUNICIPAL BOUNDARY
 - POI - 0.5 TO 2 MILES
 - POI - 0.0 TO 0.5 MILES
 - VISUAL STUDY AREA
- POTENTIAL VISIBILITY OF SUBSTATION, POI, AND TRANSMISSION STRUCTURES
- MORE POI VISIBLE
 - LESS POI VISIBLE

NOTES:
1. THIS FIGURE SHOWS VISIBILITY OF COLLECTOR SUBSTATION, NYPA POI SWITCHYARD, AND TRANSMISSION STRUCTURES BASED ON JUNE 2024 PROJECT DESIGN.
2. THE FULL MAP EXTENT SHOWN ON THIS FIGURE IS WITHIN THE ERIE CANALWAY NATIONAL HERITAGE CORRIDOR AND MOHAWK VALLEY STATE HERITAGE CORRIDOR.

BASE MAP: USGS TOPO MAP
DATA SOURCES: TRC

1:24,000
1" = 2,000'

0 1,000 2,000 FEET

FLAT CREEK SOLAR NY LLC TOWN OF CANAJOHARIE & ROOT MONTGOMERY COUNTY, NY		
TITLE: POTENTIAL VISIBILITY AND VISUAL RESOURCES FOR COLLECTOR SUBSTATION, POI SWITCHYARD, AND TRANSMISSION STRUCTURES		
DRAWN BY: M. BILLINGS	PROJ. NO.: 427281	FIGURE 4F
CHECKED BY: B. MASTERSON		
APPROVED BY: J. BARTOS		
DATE: JULY 2024		
		10 HEMINGWAY DRIVE 2ND FLOOR EAST PROVIDENCE, RI 02915 PHONE: 401.330.1236
FILE:	FlatCreek Revised VS_Figures_June2024.aprx	