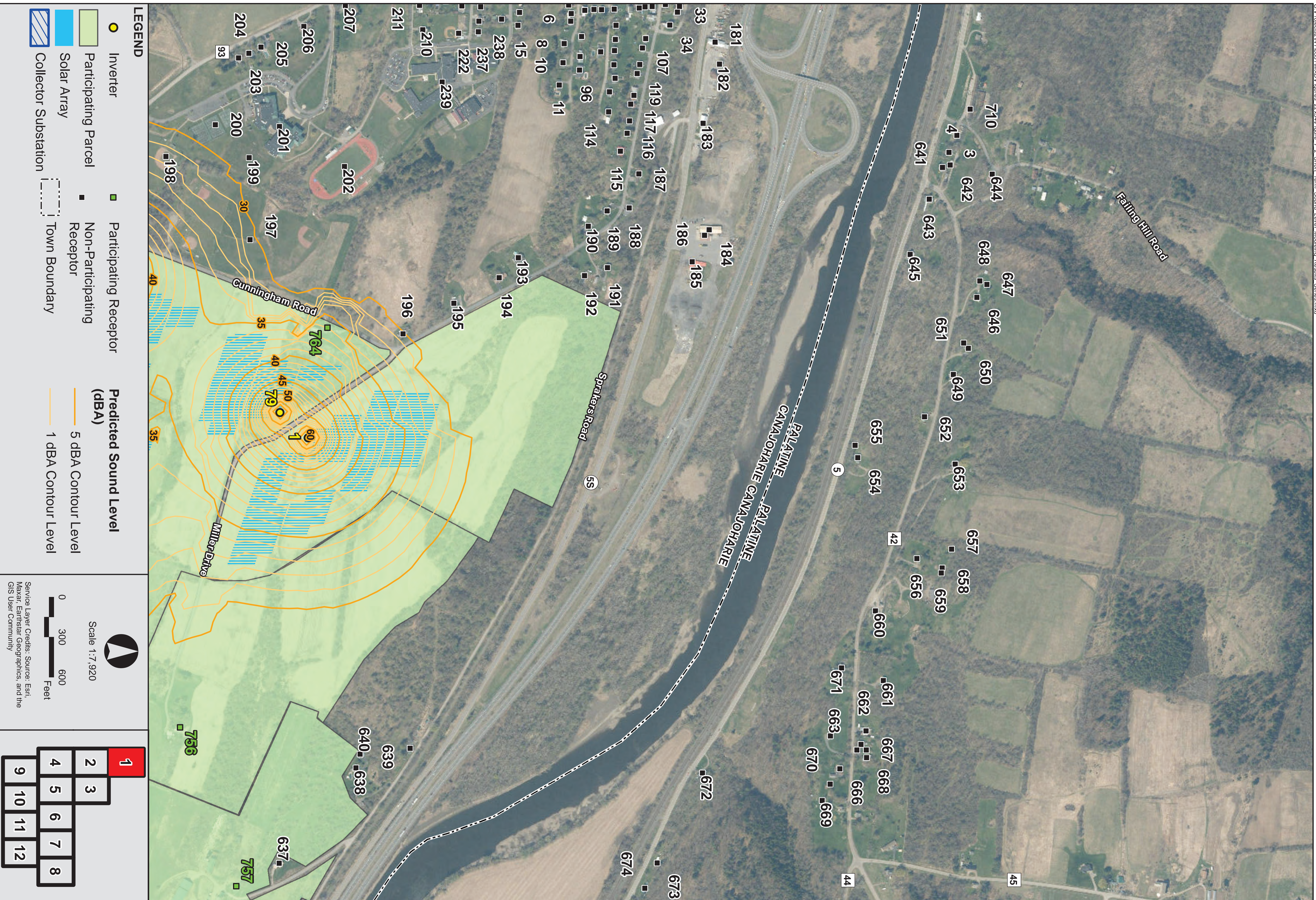


Flat Creek Solar Montgomery County, New York



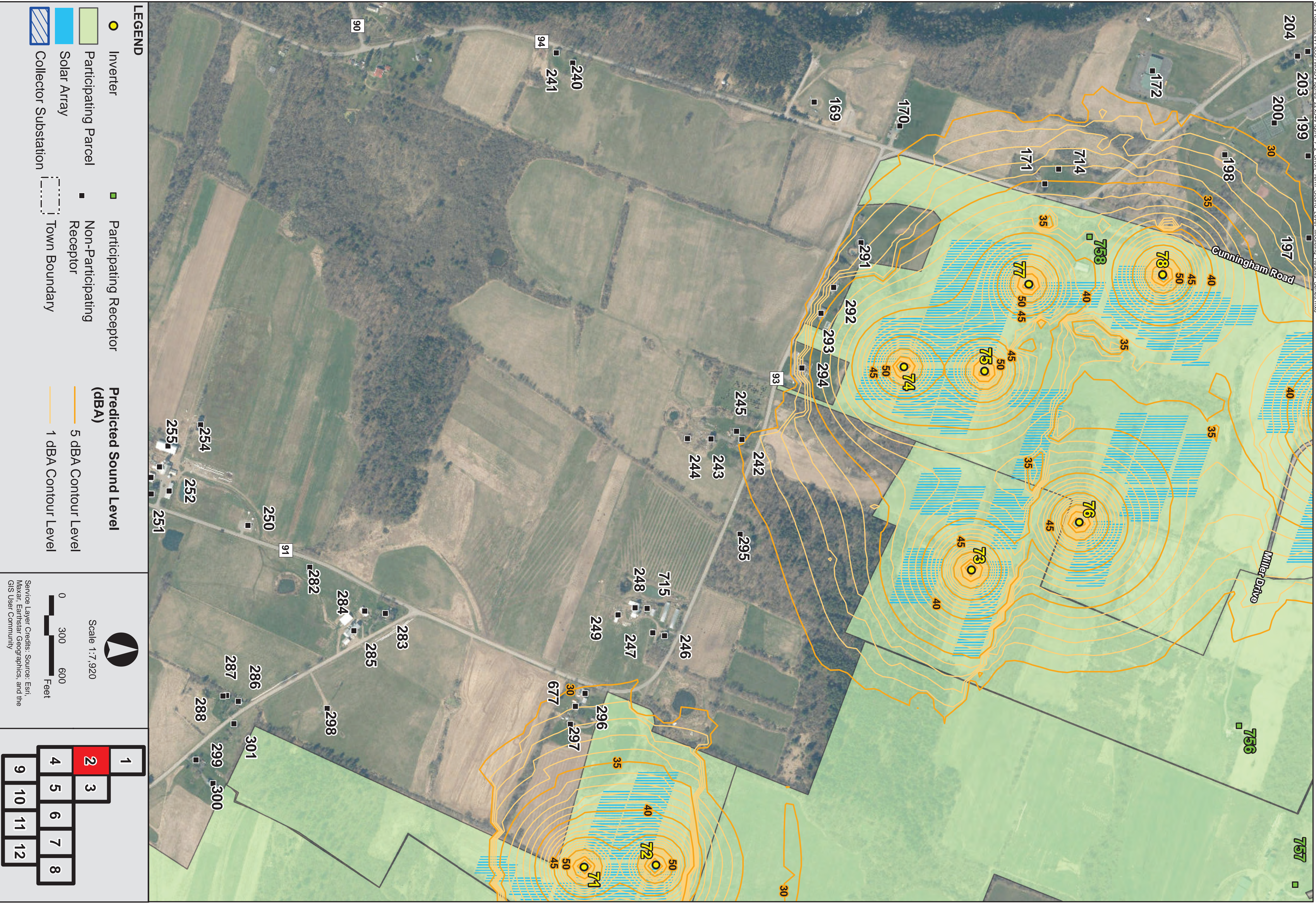


Flat Creek Solar Montgomery County, New York



Figure 7-2, Map 1 of 12  
Short-Term Sound Level Modeling Results



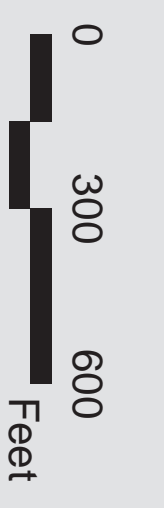


**LEGEND**

- Inverter
- Participating Parcel
- Solar Array
- Collector Substation
- Participating Receptor
- Non-Participating Receptor
- Town Boundary
- Predicted Sound Level (dBA)
- 5 dBA Contour Level
- 1 dBA Contour Level



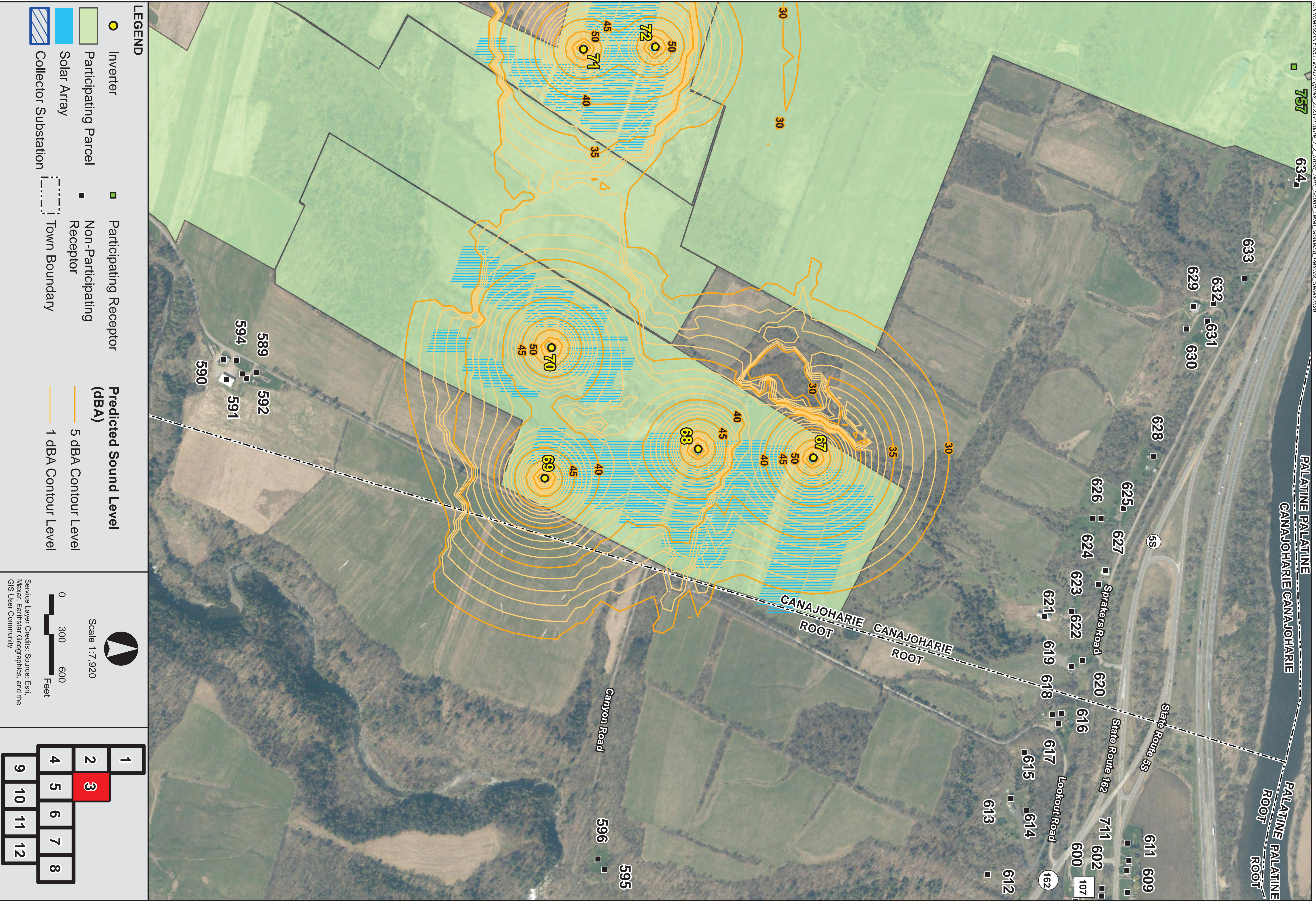
Scale 1:7,920



Service Layer Credits: Source: Esri, Maxar, Earthstar Geographics, and the GIS User Community

|   |    |    |    |   |  |
|---|----|----|----|---|--|
| 1 | 2  | 3  |    |   |  |
| 4 | 5  | 6  | 7  | 8 |  |
| 9 | 10 | 11 | 12 |   |  |



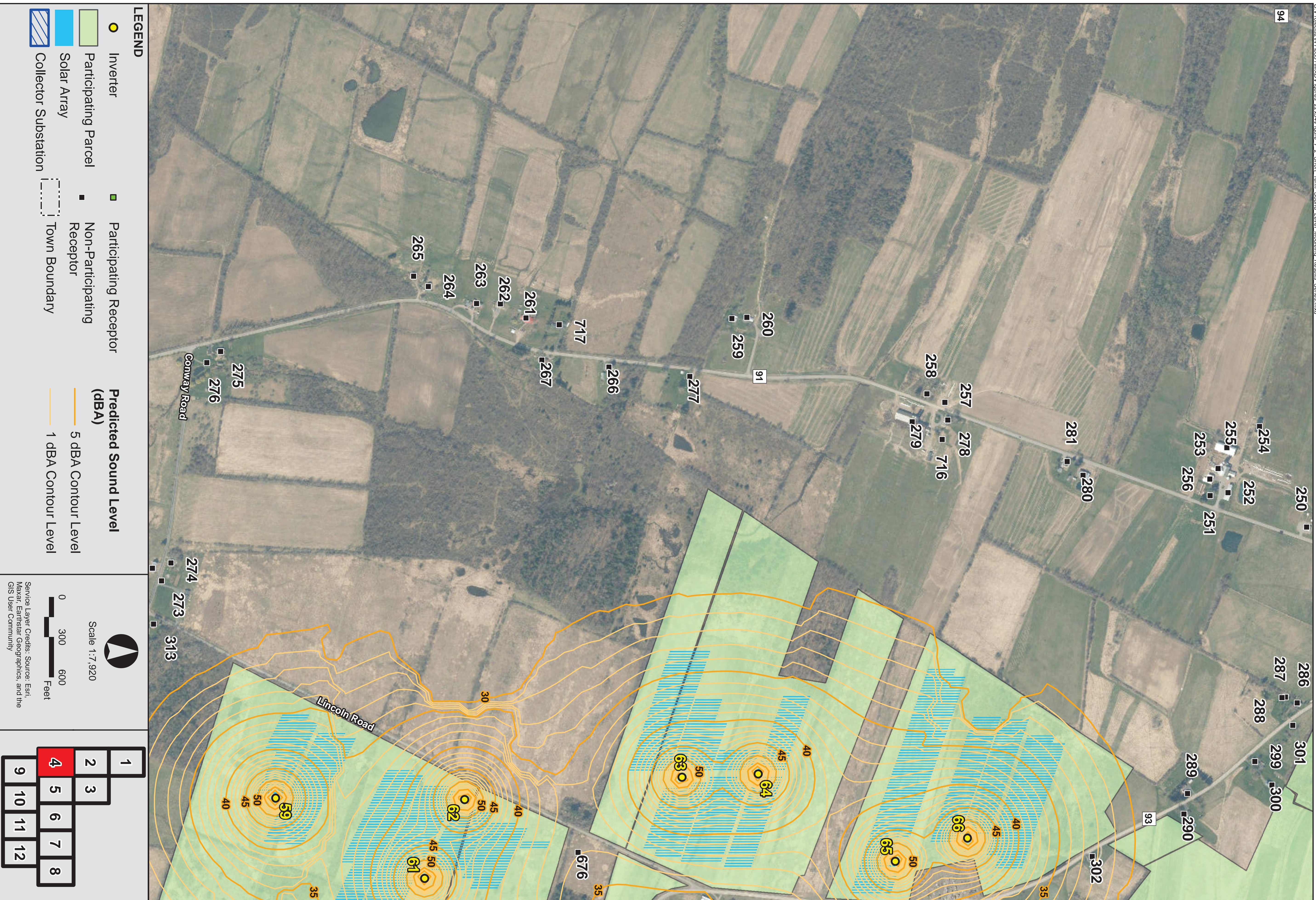


Flat Creek Solar Montgomery County, New York



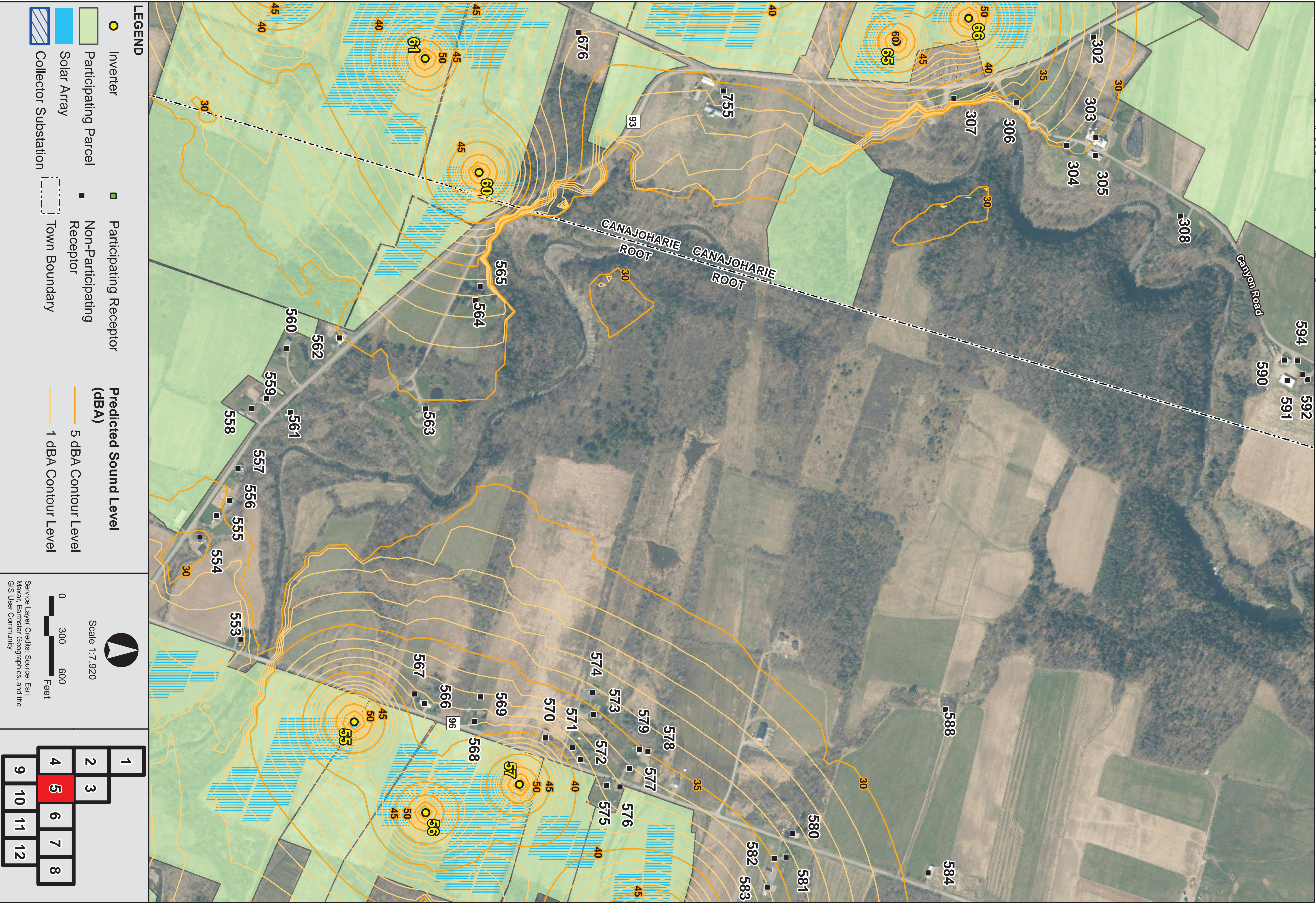
Figure 7-2, Map 3 of 12  
Short-Term Sound Level Modeling Results



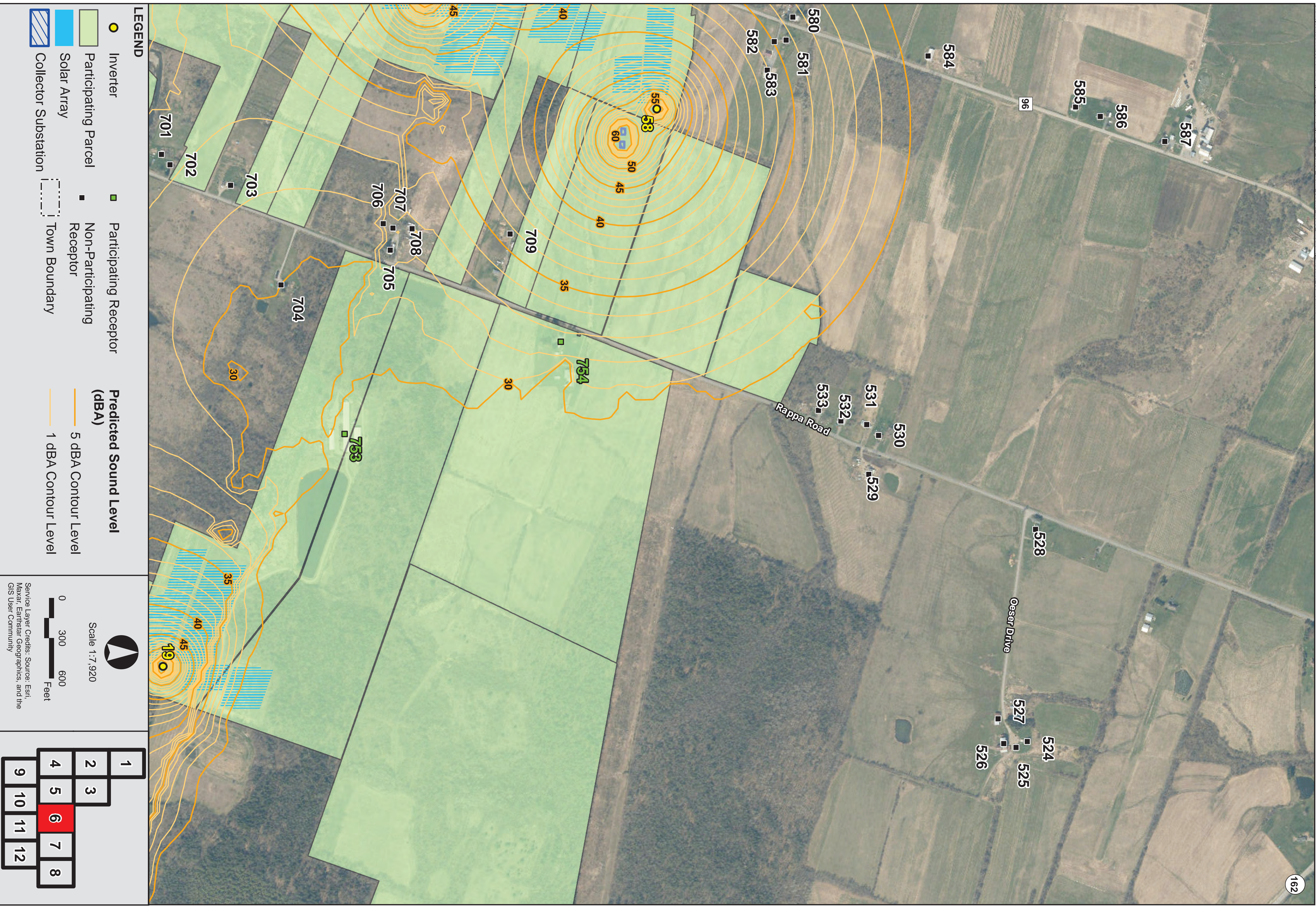


Flat Creek Solar Montgomery County, New York

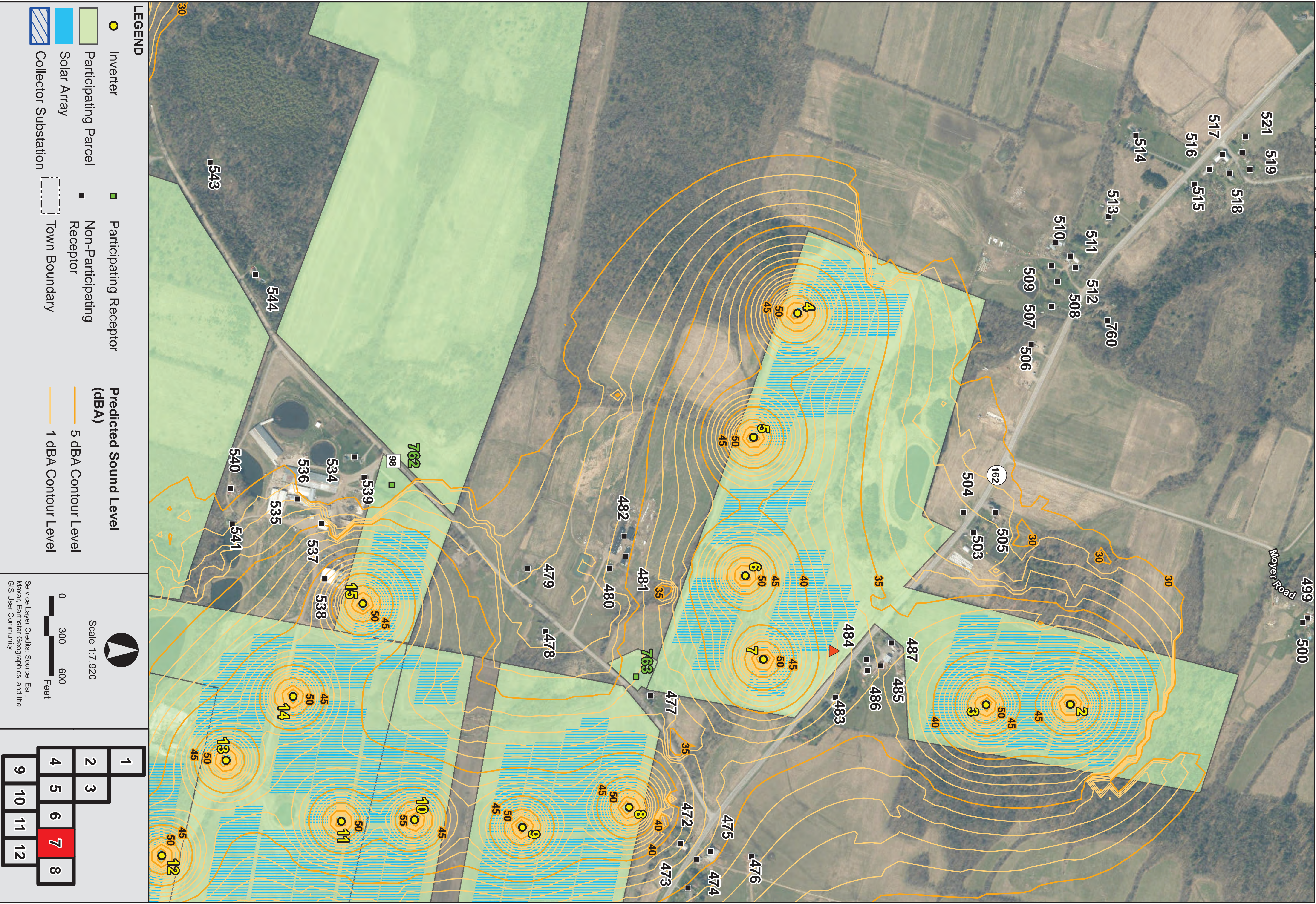










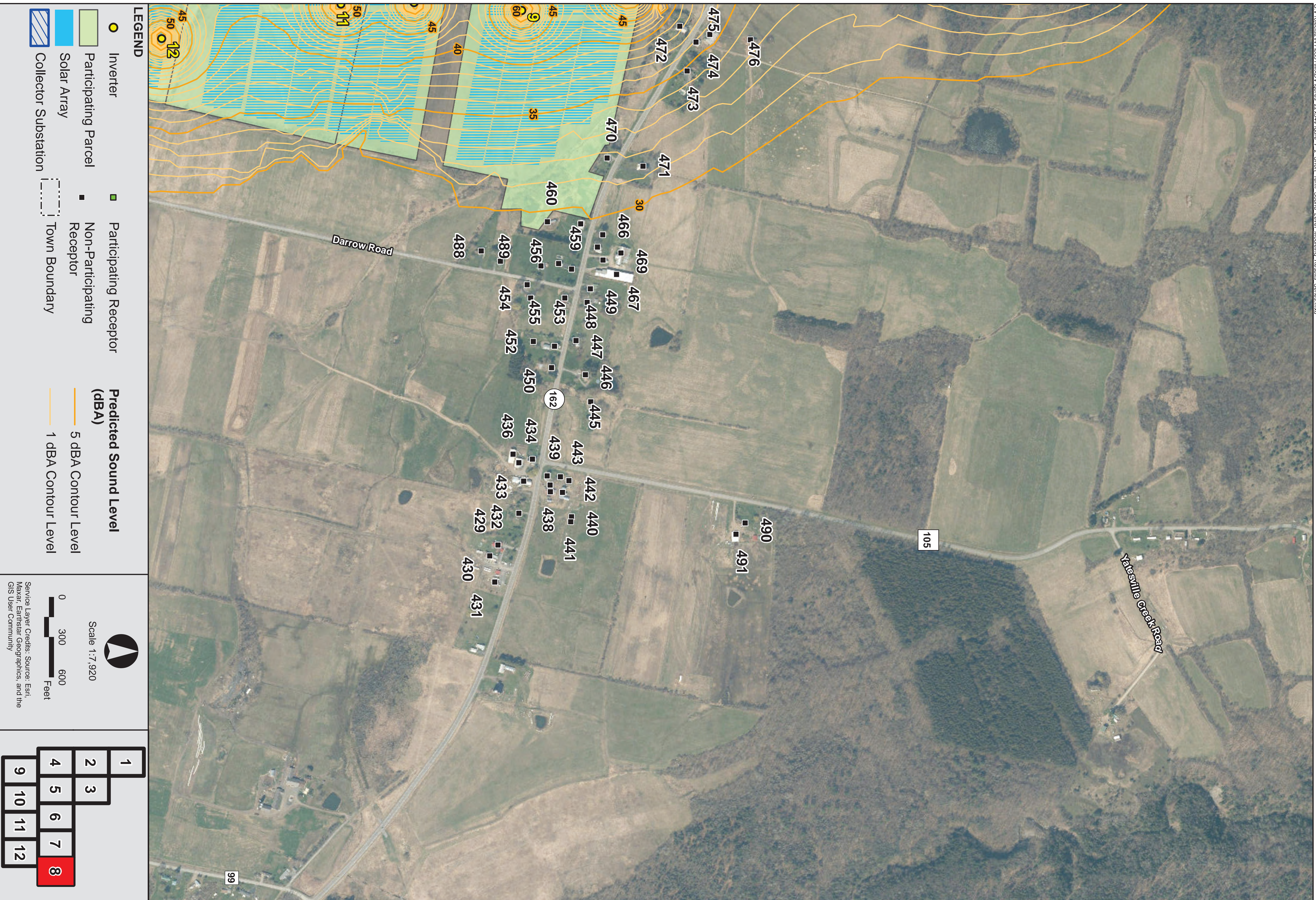


Flat Creek Solar Montgomery County, New York



Figure 7-2, Map 7 of 12  
Short-Term Sound Level Modeling Results

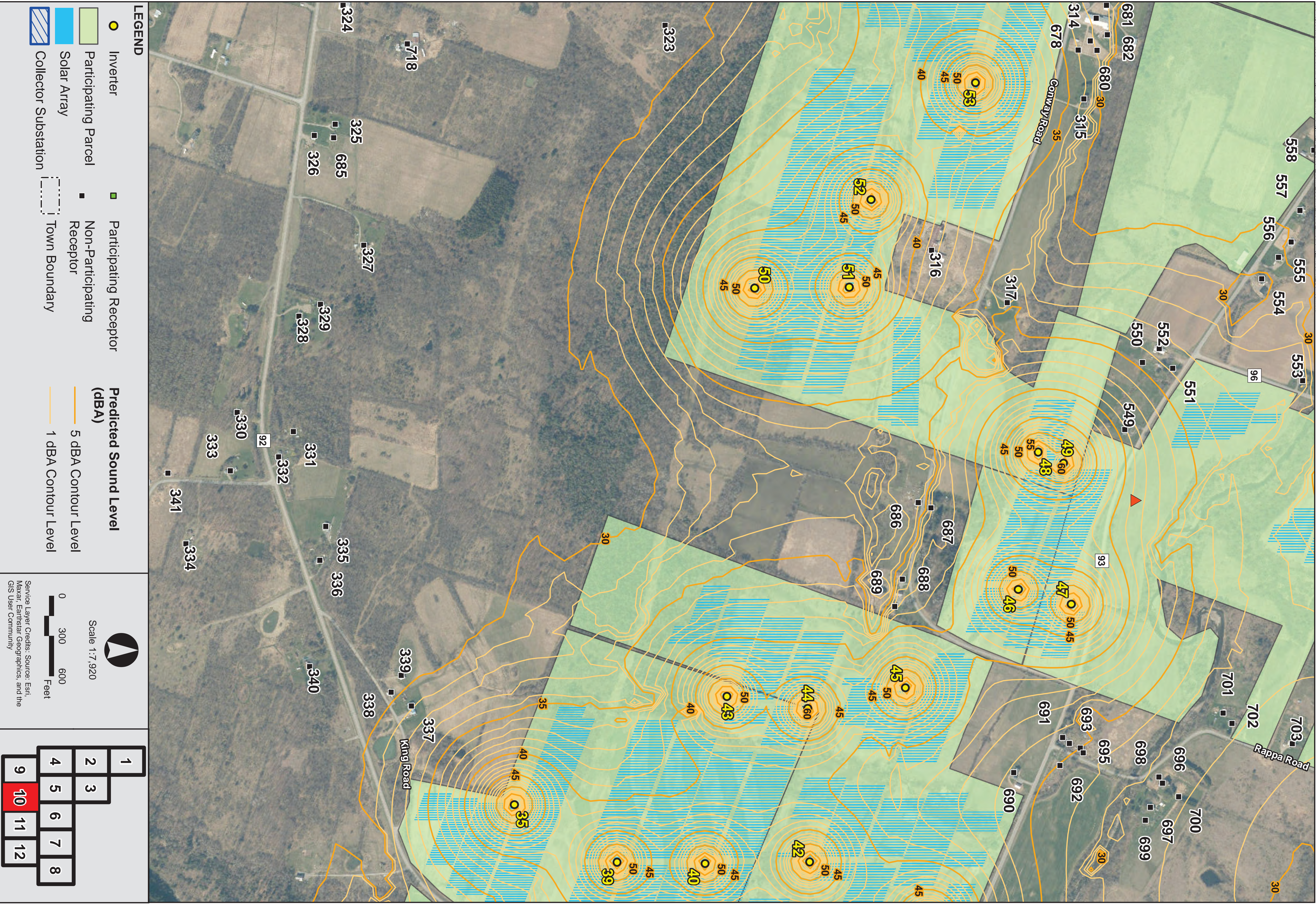




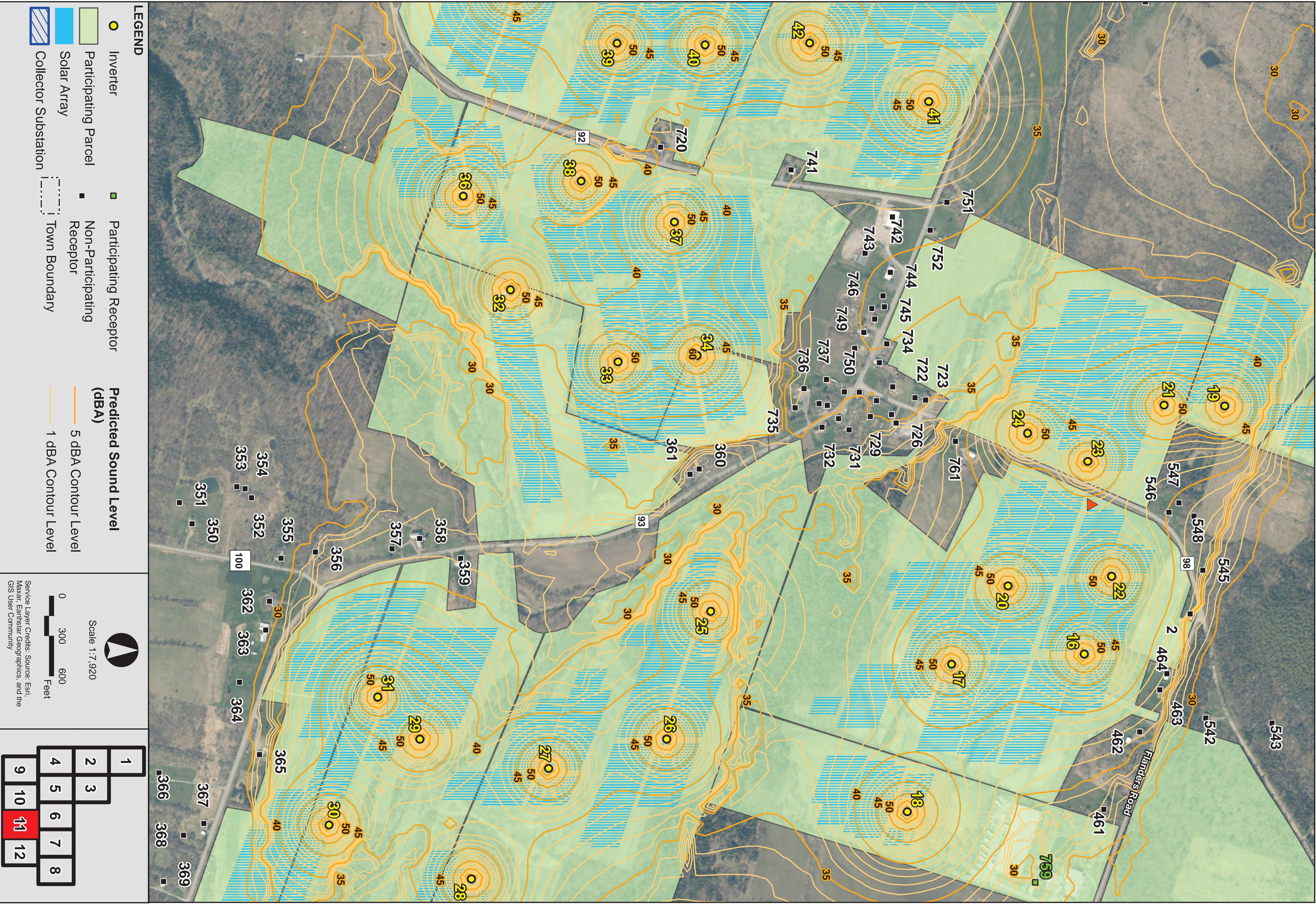








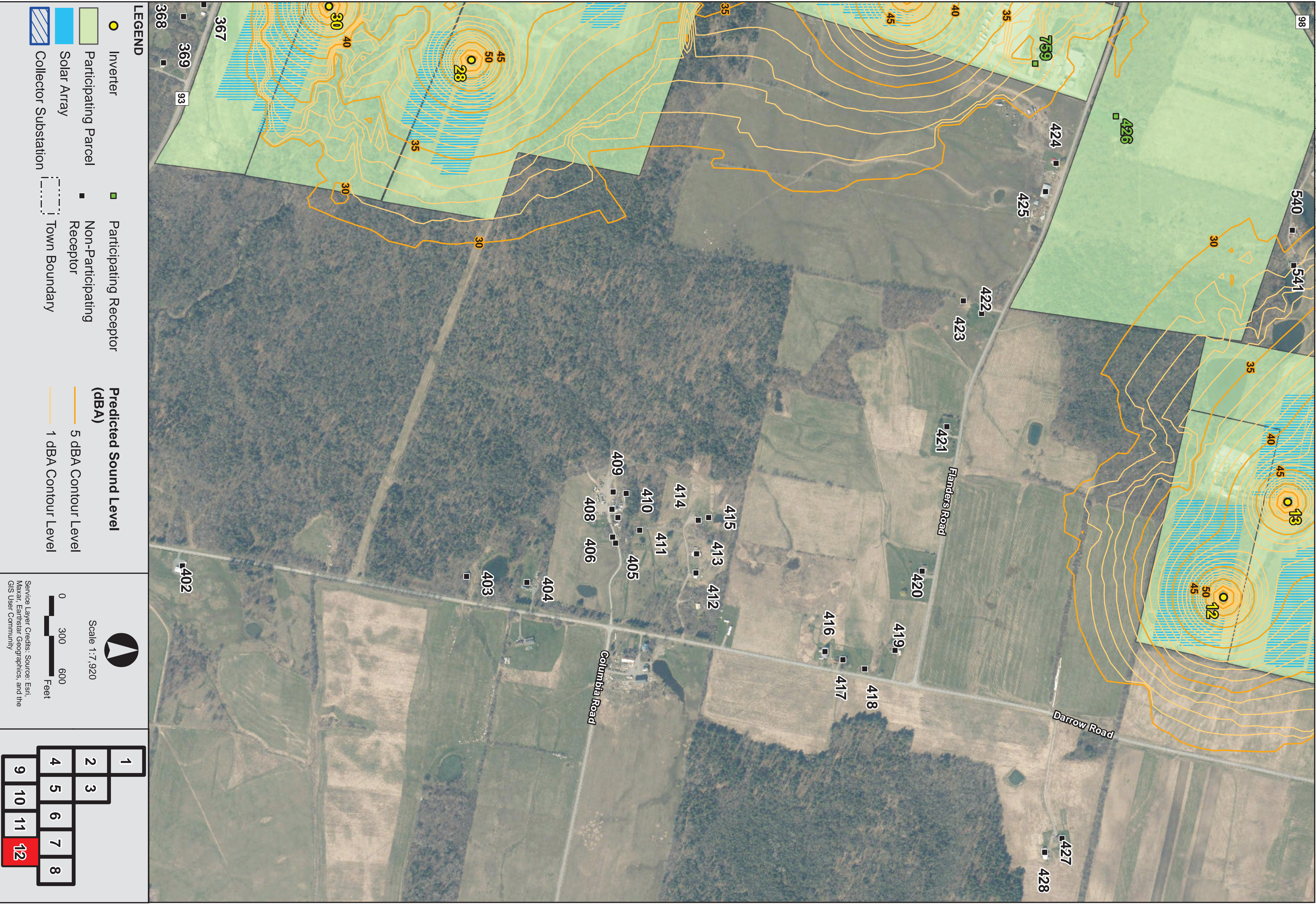




Flat Creek Solar Montgomery County, New York

Figure 7-2, Map 11 of 12  
Short-Term Sound Level Modeling Results





Flat Creek Solar Montgomery County, New York



Figure 7-2, Map 12 of 12  
Short-Term Sound Level Modeling Results