

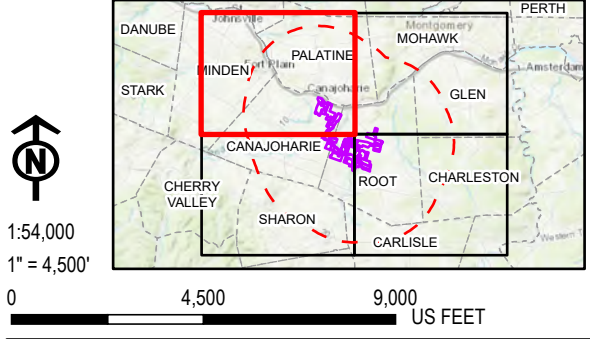
LEGEND

- APPROXIMATE LOCATION OF AVANGRID MOHAWK SOLAR PROJECT
- APPROXIMATE LOCATION OF PROPOSED 80 MW PROJECT
- APPROXIMATE LOCATION OF NEXAMP COMMUNITY SOLAR FARM
- COMPRESSOR STATION
- ELECTRIC SUBSTATION
- OIL OR GAS WELL
- POWER PLANT
- ELECTRIC TRANSMISSION
- NATURAL GAS PIPELINE
- RAILROAD
- PADDS
- AGRICULTURAL
- COMMERCIAL
- COMMUNITY SERVICES
- INDUSTRIAL
- PUBLIC SERVICES
- RECREATION AND ENTERTAINMENT
- RESIDENTIAL
- VACANT LAND
- WILD, FORESTED, CONSERVATION LANDS AND PUBLIC PARKS
- FACILITY SITE
- FIVE-MILE STUDY AREA BOUNDARY
- VILLAGE BOUNDARY
- TOWN BOUNDARY
- COUNTY BOUNDARY

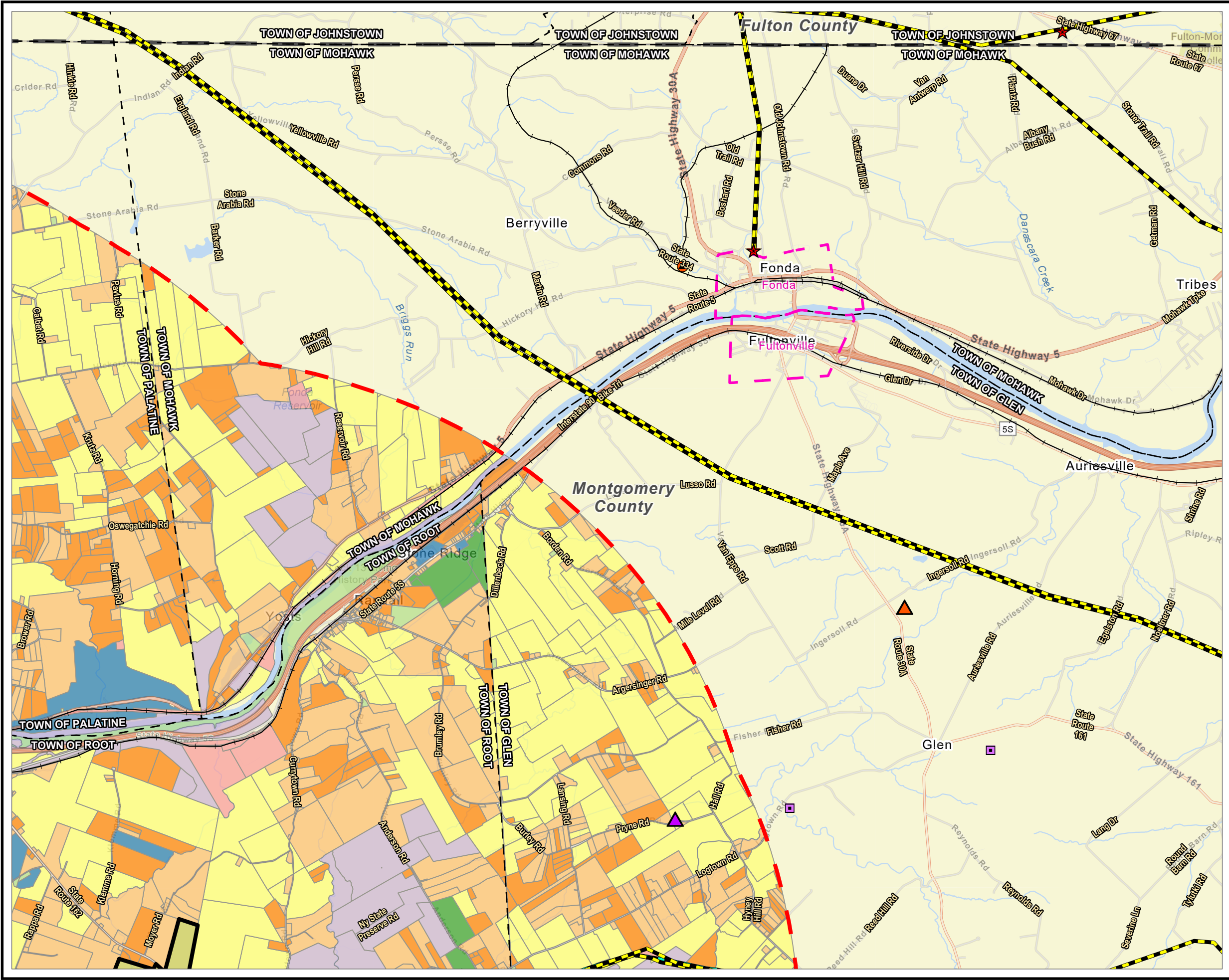
NOTES:

1. LAND USE IS DERIVED FROM LAND USE CODES IN NY PARCEL DATA.
2. THIS FIGURE IS DESIGNED TO BE VIEWED OR PRINTED IN COLOR AT 11X17.

BASE MAP: ESRI "WORLD STREET MAP" 2021 ONLINE SERVICE LAYER.
 DATA SOURCES: SUNEAST, NYSGIS, REXTAG, TRC



PROJECT: FLAT CREEK SOLAR	
TOWNS OF CANAJOHARIE AND ROOT	
MONTGOMERY COUNTY, NY	
TITLE: CURRENT LAND USE AND MAJOR UTILITY INFRASTRUCTURE IN THE STUDY AREA	
DRAWN BY: R. BARBER	PROJ. NO.: 427281.2022.0000
CHECKED BY: G. CORYELL	FIGURE 3-3 Sheet 1 of 4
APPROVED BY: S. KRANES	
DATE: JULY 2024	



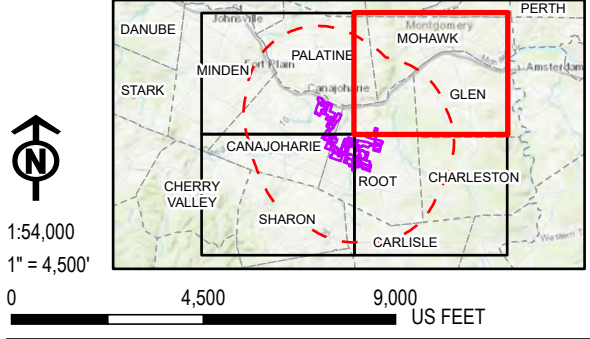
LEGEND

- APPROXIMATE LOCATION OF CONNECTGEN MILL POINT SOLAR PROJECT
- APPROXIMATE LOCATION OF CONNECTGEN MILL POINT SOLAR II PROJECT
- ELECTRIC SUBSTATION
- OIL OR GAS WELL
- PETROCHEMICAL FACILITY
- ELECTRIC TRANSMISSION
- NATURAL GAS PIPELINE
- RAILROAD
- PADDS
- AGRICULTURAL
- COMMERCIAL
- COMMUNITY SERVICES
- INDUSTRIAL
- PUBLIC SERVICES
- RESIDENTIAL
- VACANT LAND
- WILD, FORESTED, CONSERVATION LANDS AND PUBLIC PARKS
- FACILITY SITE
- FIVE-MILE STUDY AREA BOUNDARY
- VILLAGE BOUNDARY
- TOWN BOUNDARY
- COUNTY BOUNDARY

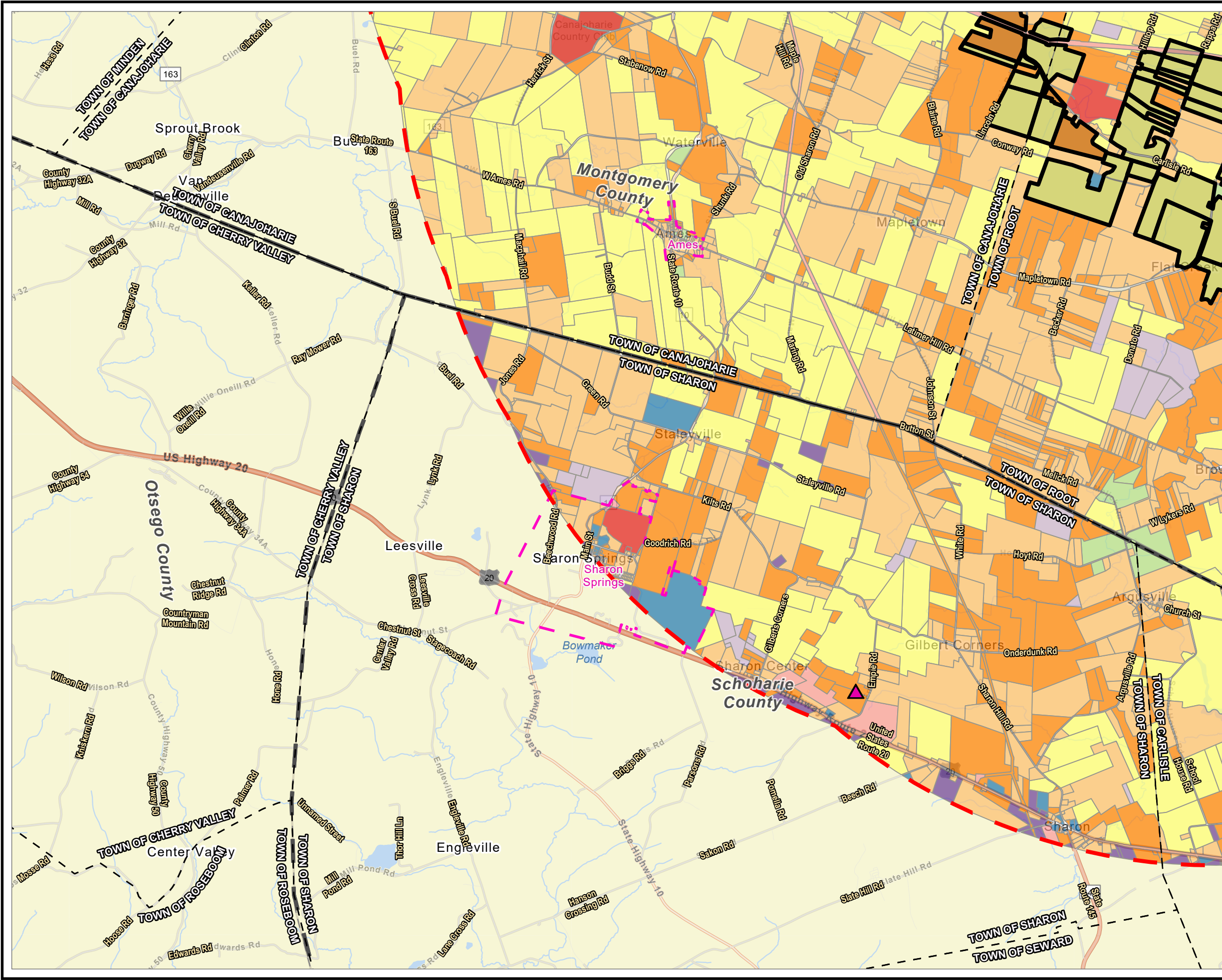
NOTES:

1. LAND USE IS DERIVED FROM LAND USE CODES IN NY PARCEL DATA.
2. THIS FIGURE IS DESIGNED TO BE VIEWED OR PRINTED IN COLOR AT 11X17.

BASE MAP: ESRI "WORLD STREET MAP" 2021 ONLINE SERVICE LAYER.
 DATA SOURCES: SUNEAST, NYSGIS, REXTAG, TRC



PROJECT:		FLAT CREEK SOLAR TOWNS OF CANAJOHARIE AND ROOT MONTGOMERY COUNTY, NY	
TITLE:			
CURRENT LAND USE AND MAJOR UTILITY INFRASTRUCTURE IN THE STUDY AREA			
DRAWN BY:	R. BARBER	PROJ. NO.:	427281.2022.0000
CHECKED BY:	G. CORYELL	FIGURE 3-3 Sheet 2 of 4	
APPROVED BY:	S. KRANES		
DATE:	JULY 2024		



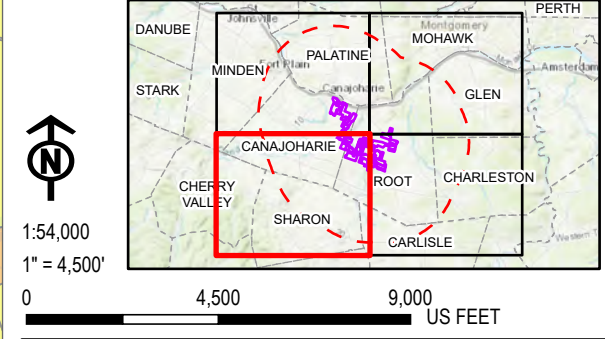
LEGEND

- APPROXIMATE LOCATION OF NEXTERA EAST POINT SOLAR PROJECT
- ELECTRIC SUBSTATION
- OIL OR GAS WELL
- POWER PLANT
- ELECTRIC TRANSMISSION
- NATURAL GAS PIPELINE
- RAILROAD
- PADDs
- AGRICULTURAL
- COMMERCIAL
- COMMUNITY SERVICES
- PUBLIC SERVICES
- RECREATION AND ENTERTAINMENT
- RESIDENTIAL
- VACANT LAND
- WILD, FORESTED, CONSERVATION LANDS AND PUBLIC PARKS
- NO DATA
- FACILITY SITE
- FIVE-MILE STUDY AREA BOUNDARY
- VILLAGE BOUNDARY
- TOWN BOUNDARY
- COUNTY BOUNDARY

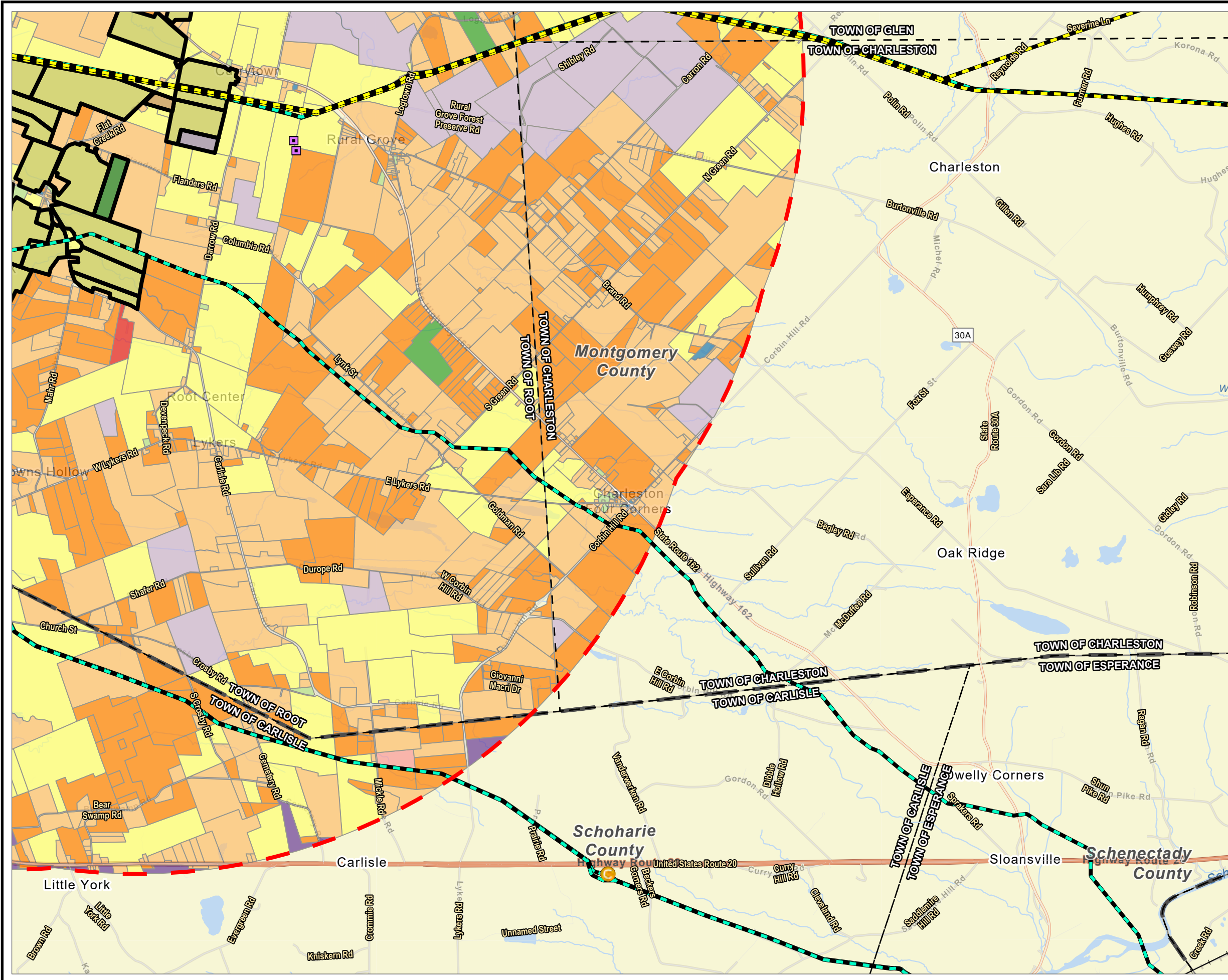
NOTES:

1. LAND USE IS DERIVED FROM LAND USE CODES IN NY PARCEL DATA.
2. THIS FIGURE IS DESIGNED TO BE VIEWED OR PRINTED IN COLOR AT 11X17.

BASE MAP: ESRI "WORLD STREET MAP" 2021 ONLINE SERVICE LAYER.
 DATA SOURCES: SUNEAST, NYSGIS, REXTAG, TRC



PROJECT: FLAT CREEK SOLAR	
TOWNS OF CANAJOHARIE AND ROOT	
MONTGOMERY COUNTY, NY	
TITLE: CURRENT LAND USE AND MAJOR UTILITY INFRASTRUCTURE IN THE STUDY AREA	
DRAWN BY: R. BARBER	PROJ. NO.: 427281.2022.0000
CHECKED BY: G. CORYELL	FIGURE 3-3 Sheet 3 of 4
APPROVED BY: S. KRANES	
DATE: JULY 2024	

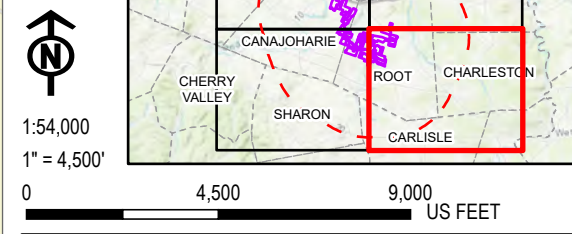
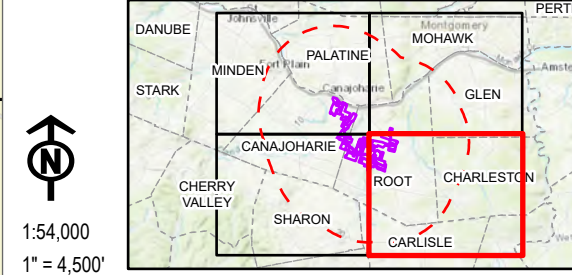


LEGEND

- COMPRESSOR STATION
- OIL OR GAS WELL
- ELECTRIC TRANSMISSION
- NATURAL GAS PIPELINE
- RAILROAD
- PADDs
- AGRICULTURAL
- COMMERCIAL
- COMMUNITY SERVICES
- INDUSTRIAL
- PUBLIC SERVICES
- RECREATION AND ENTERTAINMENT
- RESIDENTIAL
- VACANT LAND
- WILD, FORESTED, CONSERVATION LANDS AND PUBLIC PARKS
- NO DATA
- FACILITY SITE
- FIVE-MILE STUDY AREA BOUNDARY
- TOWN BOUNDARY
- COUNTY BOUNDARY

NOTES:
 1. LAND USE IS DERIVED FROM LAND USE CODES IN NY PARCEL DATA.
 2. THIS FIGURE IS DESIGNED TO BE VIEWED OR PRINTED IN COLOR AT 11X17.

BASE MAP: ESRI "WORLD STREET MAP" 2021 ONLINE SERVICE LAYER.
 DATA SOURCES: SUNEAST, NYSGIS, REXTAG, TRC



PROJECT: FLAT CREEK SOLAR TOWNS OF CANAJOHARIE AND ROOT MONTGOMERY COUNTY, NY	
TITLE: CURRENT LAND USE AND MAJOR UTILITY INFRASTRUCTURE IN THE STUDY AREA	
DRAWN BY: R. BARBER	PROJ. NO.: 427281.2022.0000
CHECKED BY: G. CORYELL	FIGURE 3-3 Sheet 4 of 4
APPROVED BY: S. KRANES	
DATE: JULY 2024	