

LEGEND

FACILITY SITE

1,000-FT BUFFER OF FACILITY SITE

TOWN BOUNDARY

LAND USE

AGRICULTURAL

COMMERCIAL

COMMUNITY SERVICES

PUBLIC SERVICES

RECREATION & ENTERTAINMENT

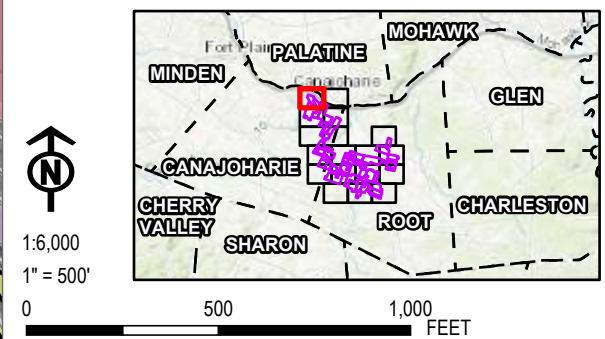
RESIDENTIAL

VACANT LAND

WILD, FORESTED, CONSERVATION LANDS AND PUBLIC PARKS

TAX PARCEL

- NOTES:**
1. LAND USE IS DERIVED FROM LAND USE CODES IN NY PARCEL DATA.
 2. THIS FIGURE IS DESIGNED TO BE VIEWED OR PRINTED IN COLOR AT 11X17.
 3. THIS FIGURE DEPICTS PARCEL BOUNDARIES AS SHOWN IN MONTGOMERY COUNTY GIS PARCEL DATA. THESE BOUNDARIES ARE NOT SURVEY ACCURATE AND THUS MAY NOT ALWAYS MATCH THE SURVEYED BOUNDARY OF THE FACILITY SITE AS DEPICTED ON OTHER FIGURES WHERE APPLICABLE.



PROJECT: FLAT CREEK SOLAR
TOWNS OF CANAJOHARIE AND ROOT
MONTGOMERY COUNTY, NY

TITLE: TAX PARCEL MAP WITHIN
1000 FEET OF FACILITY SITE

DRAWN BY: R. BARBER **PROJ. NO.:** 427281.2022.0000

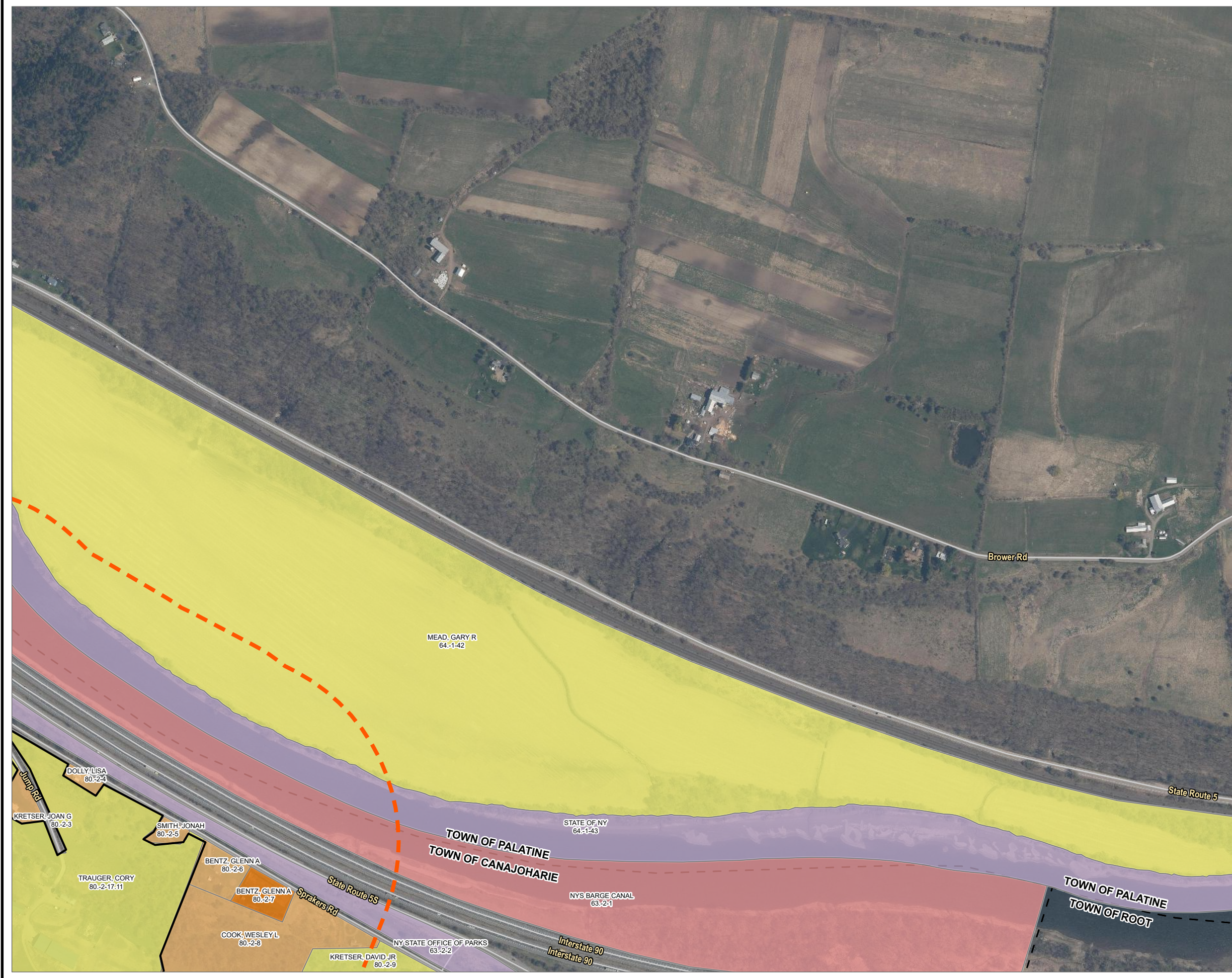
CHECKED BY: G. CORYELL

APPROVED BY: S. KRANES

DATE: JULY 2024

FIGURE 3-2
Sheet 1 of 18

TRC 15 GREENFIELD PKWY., STE. 102
LIVERPOOL, NY 13088



LEGEND

FACILITY SITE

1,000-FT BUFFER OF FACILITY SITE

TOWN BOUNDARY

LAND USE

AGRICULTURAL

PUBLIC SERVICES

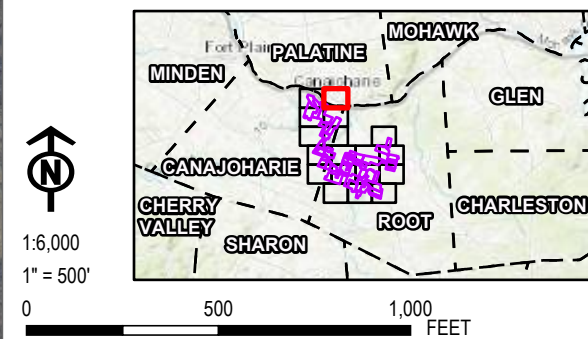
RESIDENTIAL

VACANT LAND

WILD, FORESTED, CONSERVATION LANDS AND PUBLIC PARKS

TAX PARCEL

- NOTES:**
1. LAND USE IS DERIVED FROM LAND USE CODES IN NY PARCEL DATA.
 2. THIS FIGURE IS DESIGNED TO BE VIEWED OR PRINTED IN COLOR AT 11X17.
 3. THIS FIGURE DEPICTS PARCEL BOUNDARIES AS SHOWN IN MONTGOMERY COUNTY GIS PARCEL DATA. THESE BOUNDARIES ARE NOT SURVEY ACCURATE AND THUS MAY NOT ALWAYS MATCH THE SURVEYED BOUNDARY OF THE FACILITY SITE AS DEPICTED ON OTHER FIGURES WHERE APPLICABLE.



PROJECT:		FLAT CREEK SOLAR TOWNS OF CANAJOHARIE AND ROOT MONTGOMERY COUNTY, NY	
TITLE:		TAX PARCEL MAP WITHIN 1000 FEET OF FACILITY SITE	
DRAWN BY:	R. BARBER	PROJ. NO.:	427281.2022.0000
CHECKED BY:	G. CORYELL	FIGURE 3-2 Sheet 2 of 18	
APPROVED BY:	S. KRANES		
DATE:	JULY 2024		
		15 GREENFIELD PKWY., STE. 102 LIVERPOOL, NY 13088	



LEGEND

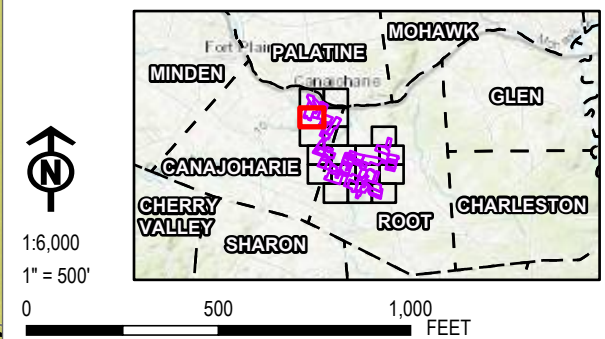
- FACILITY SITE
- 1,000-FT BUFFER OF FACILITY SITE
- TOWN BOUNDARY
- LAND USE**
- AGRICULTURAL
- COMMERCIAL
- COMMUNITY SERVICES
- RECREATION & ENTERTAINMENT
- RESIDENTIAL
- VACANT LAND
- WILD, FORESTED, CONSERVATION LANDS AND PUBLIC PARKS
- TAX PARCEL

NOTES:

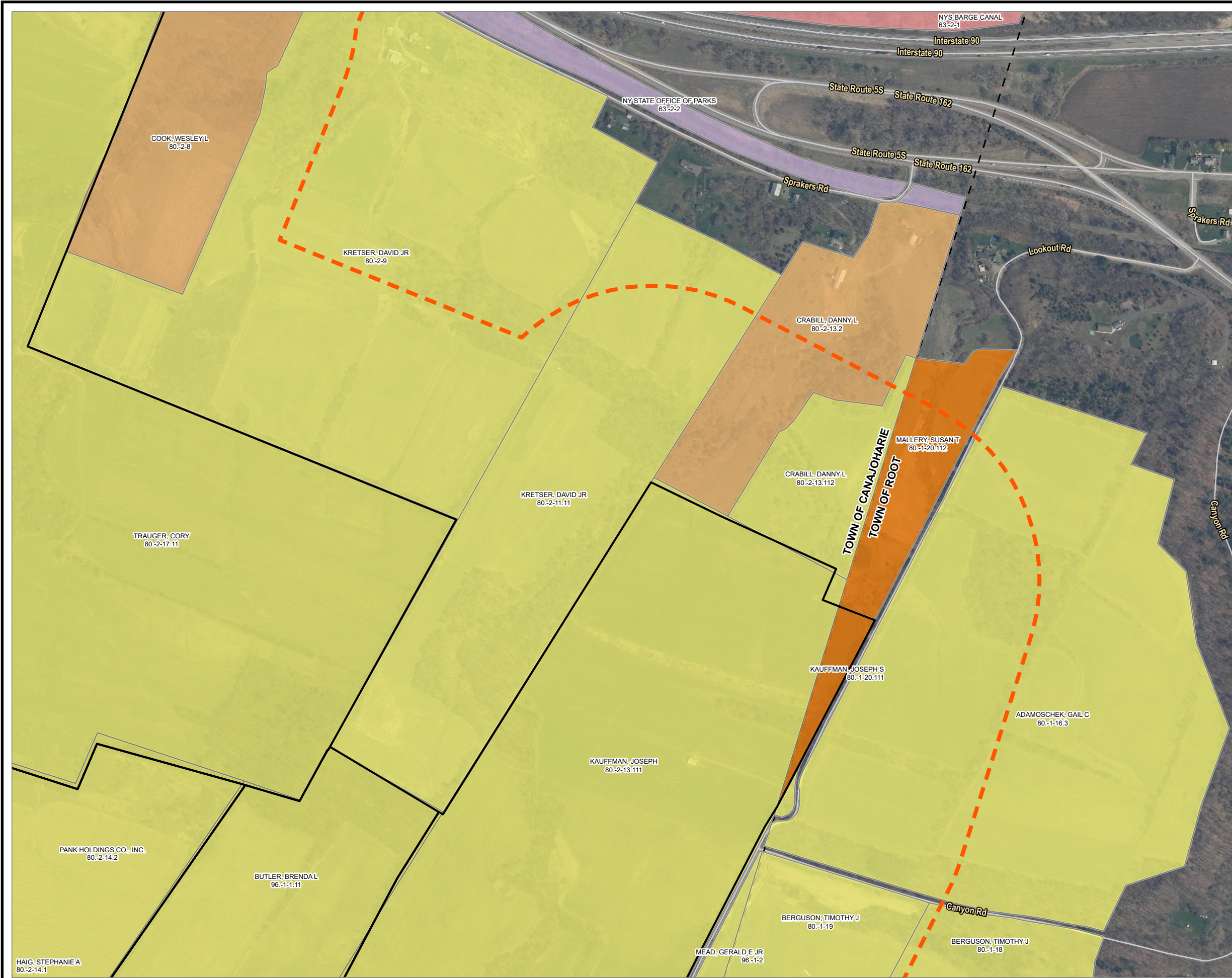
1. LAND USE IS DERIVED FROM LAND USE CODES IN NY PARCEL DATA.

2. THIS FIGURE IS DESIGNED TO BE VIEWED OR PRINTED IN COLOR AT 11X17.

3. THIS FIGURE DEPICTS PARCEL BOUNDARIES AS SHOWN IN MONTGOMERY COUNTY GIS PARCEL DATA. THESE BOUNDARIES ARE NOT SURVEY ACCURATE AND THUS MAY NOT ALWAYS MATCH THE SURVEYED BOUNDARY OF THE FACILITY SITE AS DEPICTED ON OTHER FIGURES WHERE APPLICABLE.



PROJECT:		FLAT CREEK SOLAR TOWNS OF CANAJOHARIE AND ROOT MONTGOMERY COUNTY, NY	
TITLE:		TAX PARCEL MAP WITHIN 1000 FEET OF FACILITY SITE	
DRAWN BY:	R. BARBER	PROJ. NO.:	427281.2022.0000
CHECKED BY:	G. CORYELL	FIGURE 3-2 Sheet 3 of 18	
APPROVED BY:	S. KRANES		
DATE:	JULY 2024		
		15 GREENFIELD PKWY., STE. 102 LIVERPOOL, NY 13088	



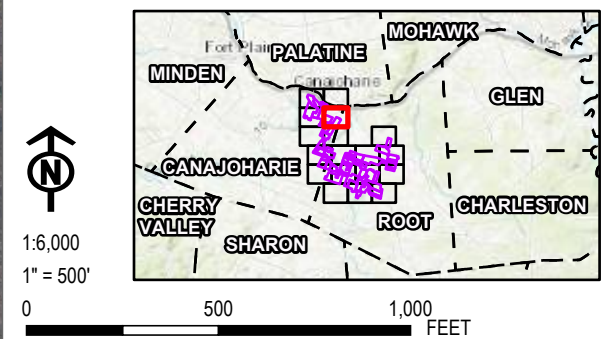
LEGEND

- FACILITY SITE
- 1,000-FT BUFFER OF FACILITY SITE
- TOWN BOUNDARY

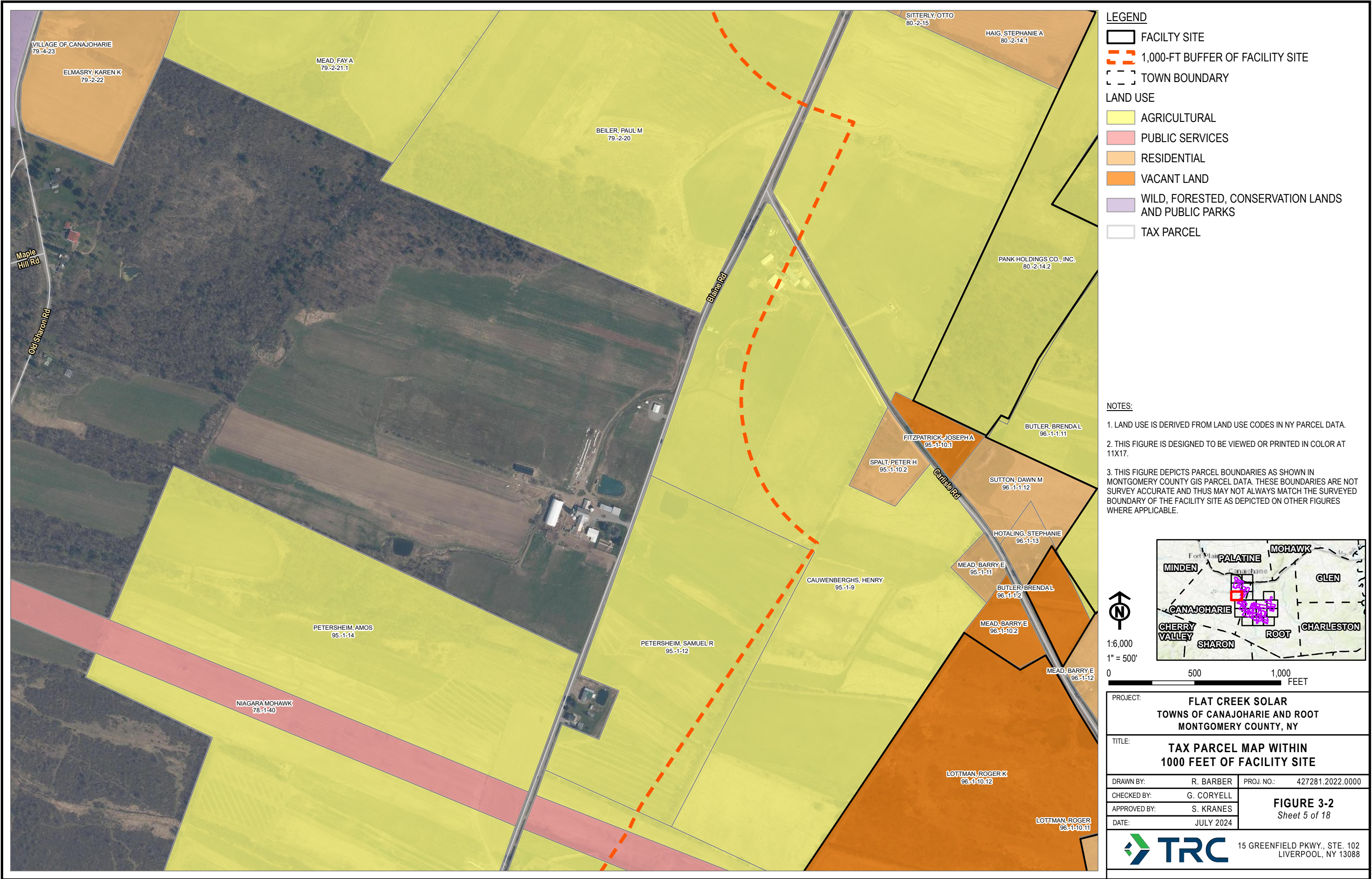
LAND USE

- AGRICULTURAL
- PUBLIC SERVICES
- RESIDENTIAL
- VACANT LAND
- WILD, FORESTED, CONSERVATION LANDS AND PUBLIC PARKS
- TAX PARCEL

- NOTES:**
1. LAND USE IS DERIVED FROM LAND USE CODES IN NY PARCEL DATA.
 2. THIS FIGURE IS DESIGNED TO BE VIEWED OR PRINTED IN COLOR AT 11X17.
 3. THIS FIGURE DEPICTS PARCEL BOUNDARIES AS SHOWN IN MONTGOMERY COUNTY GIS PARCEL DATA. THESE BOUNDARIES ARE NOT SURVEY ACCURATE AND THUS MAY NOT ALWAYS MATCH THE SURVEYED BOUNDARY OF THE FACILITY SITE AS DEPICTED ON OTHER FIGURES WHERE APPLICABLE.



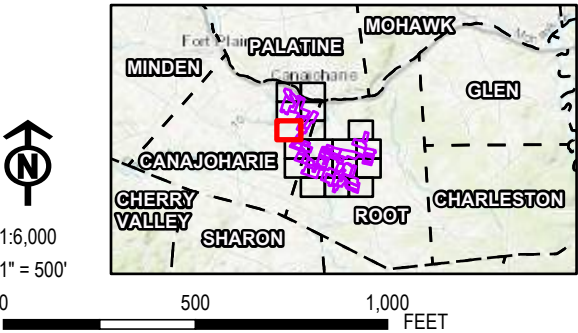
PROJECT:		FLAT CREEK SOLAR TOWNS OF CANAJOHARIE AND ROOT MONTGOMERY COUNTY, NY	
TITLE:		TAX PARCEL MAP WITHIN 1000 FEET OF FACILITY SITE	
DRAWN BY:	R. BARBER	PROJ. NO.:	427281.2022.0000
CHECKED BY:	G. CORYELL	FIGURE 3-2 Sheet 4 of 18	
APPROVED BY:	S. KRANES		
DATE:	JULY 2024		



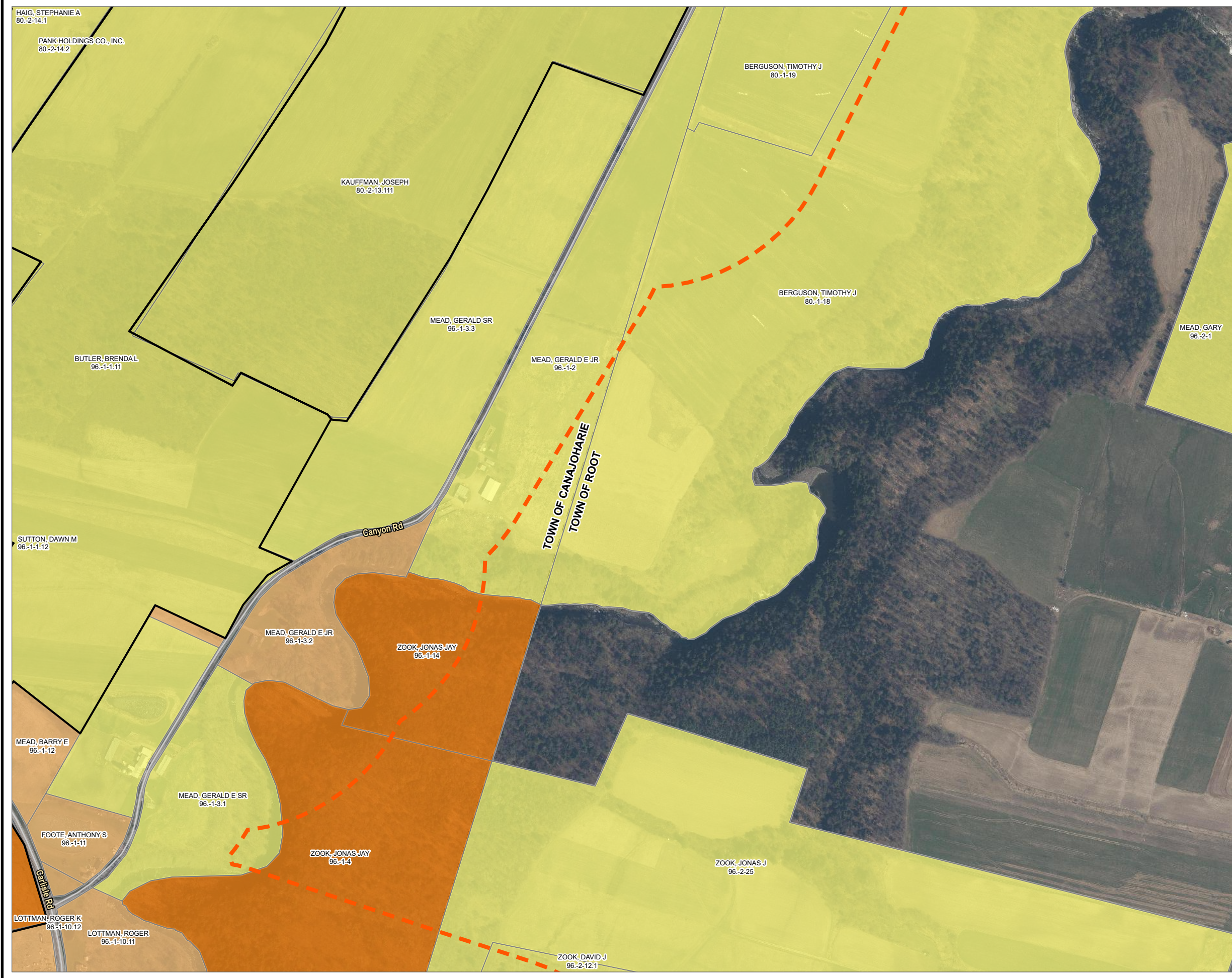
LEGEND

- FACILITY SITE
- 1,000-FT BUFFER OF FACILITY SITE
- TOWN BOUNDARY
- LAND USE**
- AGRICULTURAL
- PUBLIC SERVICES
- RESIDENTIAL
- VACANT LAND
- WILD, FORESTED, CONSERVATION LANDS AND PUBLIC PARKS
- TAX PARCEL

- NOTES:**
1. LAND USE IS DERIVED FROM LAND USE CODES IN NY PARCEL DATA.
 2. THIS FIGURE IS DESIGNED TO BE VIEWED OR PRINTED IN COLOR AT 11X17.
 3. THIS FIGURE DEPICTS PARCEL BOUNDARIES AS SHOWN IN MONTGOMERY COUNTY GIS PARCEL DATA. THESE BOUNDARIES ARE NOT SURVEY ACCURATE AND THUS MAY NOT ALWAYS MATCH THE SURVEYED BOUNDARY OF THE FACILITY SITE AS DEPICTED ON OTHER FIGURES WHERE APPLICABLE.



PROJECT:		FLAT CREEK SOLAR TOWNS OF CANAJOHARIE AND ROOT MONTGOMERY COUNTY, NY	
TITLE:		TAX PARCEL MAP WITHIN 1000 FEET OF FACILITY SITE	
DRAWN BY:	R. BARBER	PROJ. NO.:	427281.2022.0000
CHECKED BY:	G. CORYELL	FIGURE 3-2 Sheet 5 of 18	
APPROVED BY:	S. KRANES		
DATE:	JULY 2024		



LEGEND

FACILITY SITE

1,000-FT BUFFER OF FACILITY SITE

TOWN BOUNDARY

LAND USE

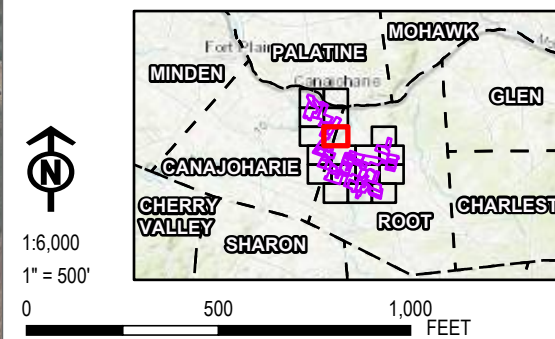
AGRICULTURAL

RESIDENTIAL

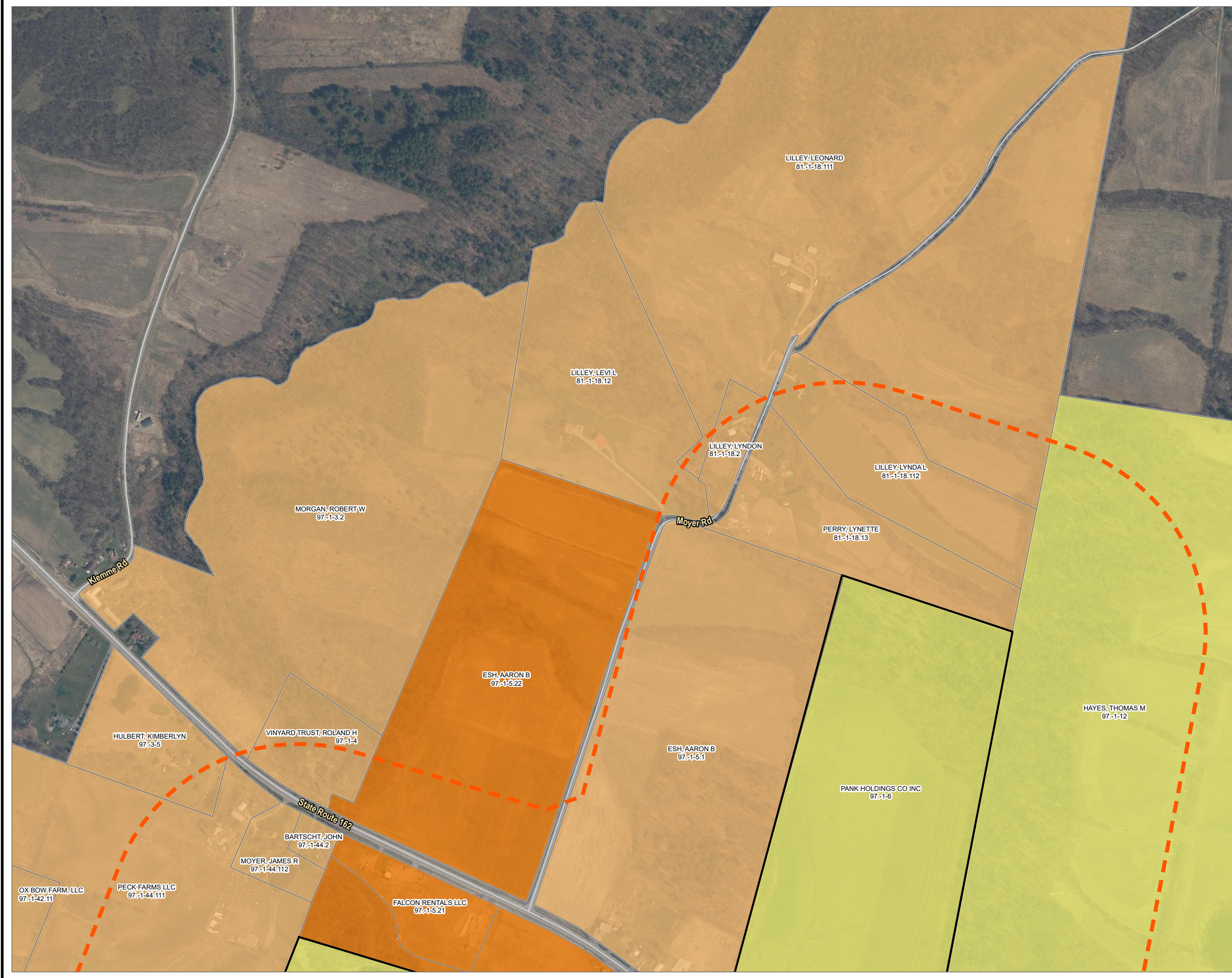
VACANT LAND

TAX PARCEL

- NOTES:**
1. LAND USE IS DERIVED FROM LAND USE CODES IN NY PARCEL DATA.
 2. THIS FIGURE IS DESIGNED TO BE VIEWED OR PRINTED IN COLOR AT 11X17.
 3. THIS FIGURE DEPICTS PARCEL BOUNDARIES AS SHOWN IN MONTGOMERY COUNTY GIS PARCEL DATA. THESE BOUNDARIES ARE NOT SURVEY ACCURATE AND THUS MAY NOT ALWAYS MATCH THE SURVEYED BOUNDARY OF THE FACILITY SITE AS DEPICTED ON OTHER FIGURES WHERE APPLICABLE.



PROJECT: FLAT CREEK SOLAR TOWNS OF CANAJOHARIE AND ROOT MONTGOMERY COUNTY, NY	
TITLE: TAX PARCEL MAP WITHIN 1000 FEET OF FACILITY SITE	
DRAWN BY: R. BARBER	PROJ. NO.: 427281.2022.0000
CHECKED BY: G. CORYELL	FIGURE 3-2 Sheet 6 of 18
APPROVED BY: S. KRANES	
DATE: JULY 2024	
15 GREENFIELD PKWY., STE. 102 LIVERPOOL, NY 13088	



LEGEND

FACILITY SITE

1,000-FT BUFFER OF FACILITY SITE

TOWN BOUNDARY

LAND USE

AGRICULTURAL

RESIDENTIAL

VACANT LAND

TAX PARCEL

NOTES:
1. LAND USE IS DERIVED FROM LAND USE CODES IN NY PARCEL DATA.
2. THIS FIGURE IS DESIGNED TO BE VIEWED OR PRINTED IN COLOR AT 11X17.
3. THIS FIGURE DEPICTS PARCEL BOUNDARIES AS SHOWN IN MONTGOMERY COUNTY GIS PARCEL DATA. THESE BOUNDARIES ARE NOT SURVEY ACCURATE AND THUS MAY NOT ALWAYS MATCH THE SURVEYED BOUNDARY OF THE FACILITY SITE AS DEPICTED ON OTHER FIGURES WHERE APPLICABLE.

N

1:6,000
1" = 500'

0

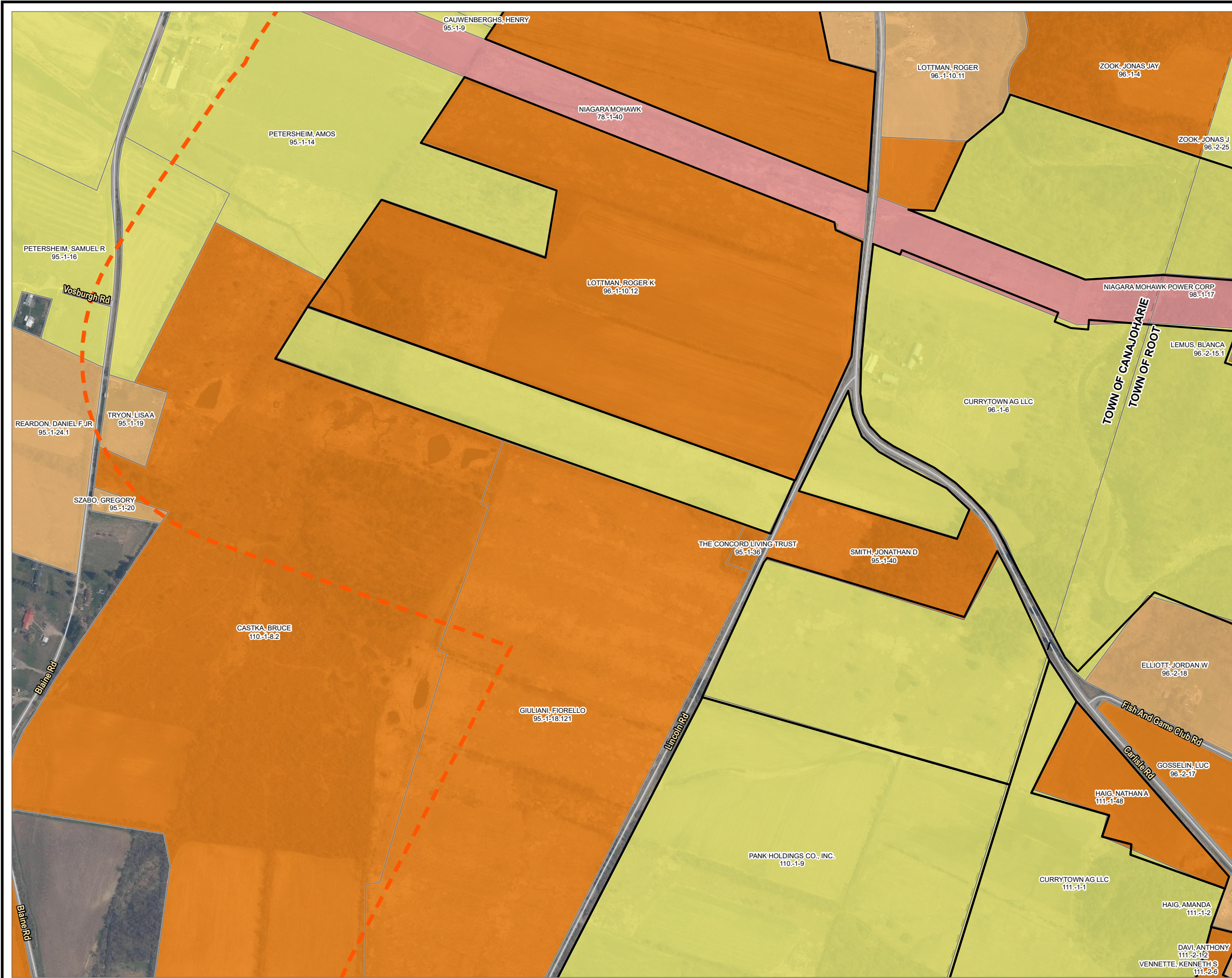
500

1,000

FEET

PROJECT:		FLAT CREEK SOLAR TOWNS OF CANAJOHARIE AND ROOT MONTGOMERY COUNTY, NY	
TITLE:		TAX PARCEL MAP WITHIN 1000 FEET OF FACILITY SITE	
DRAWN BY:	R. BARBER	PROJ. NO.:	427281.2022.0000
CHECKED BY:	G. CORYELL	FIGURE 3-2 Sheet 7 of 18	
APPROVED BY:	S. KRANES		
DATE:	JULY 2024		

15 GREENFIELD PKWY., STE. 102
LIVERPOOL, NY 13088



LEGEND

FACILITY SITE

1,000-FT BUFFER OF FACILITY SITE

TOWN BOUNDARY

LAND USE

AGRICULTURAL

PUBLIC SERVICES

RESIDENTIAL

VACANT LAND

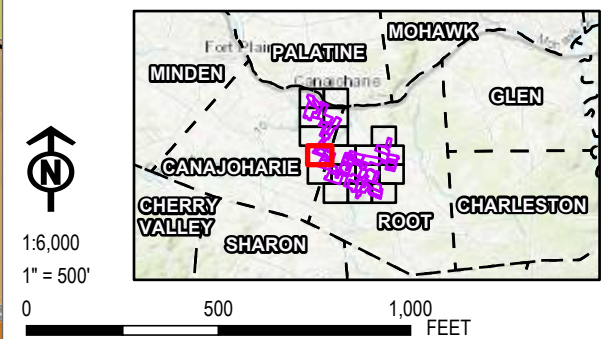
TAX PARCEL

NOTES:

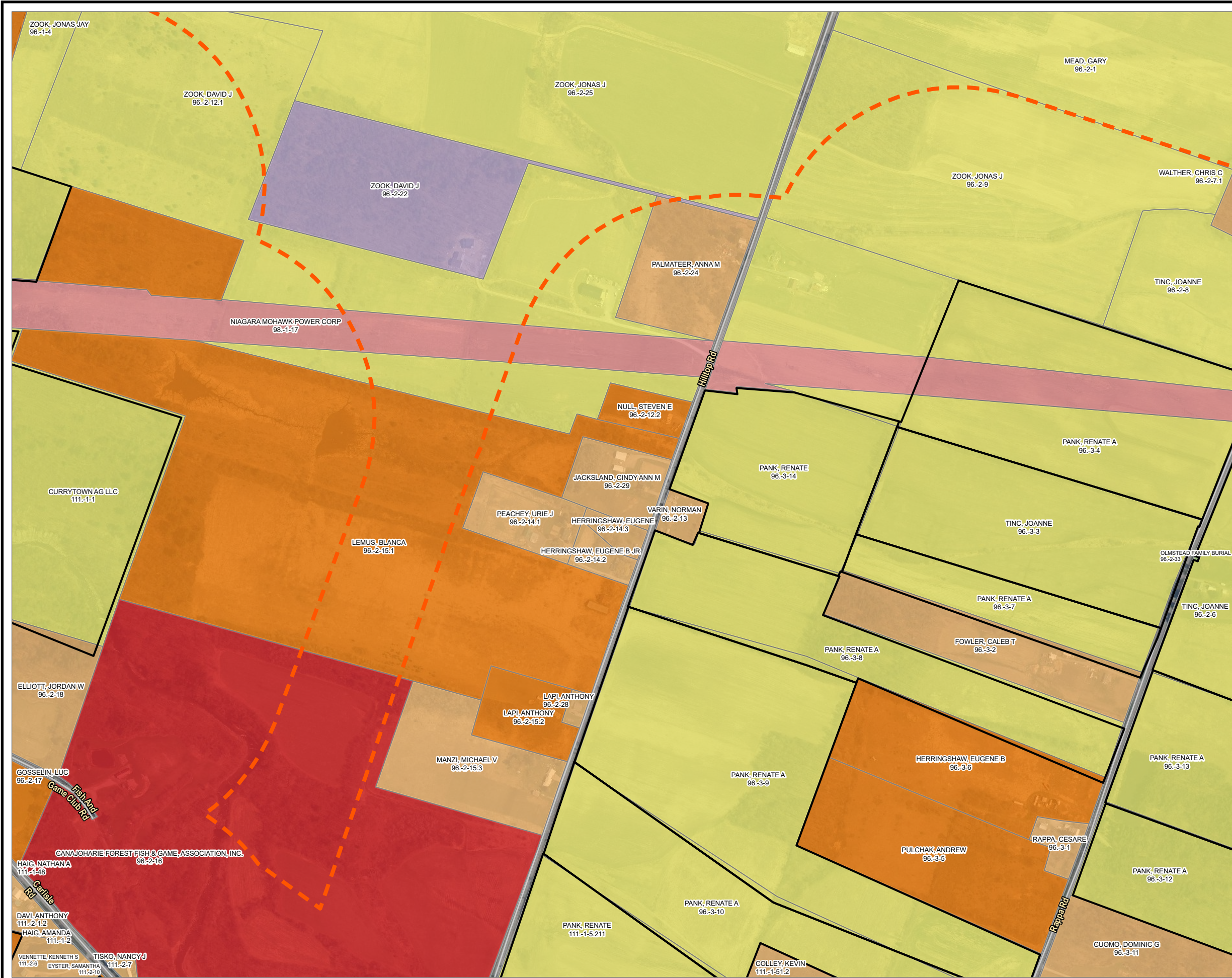
1. LAND USE IS DERIVED FROM LAND USE CODES IN NY PARCEL DATA.

2. THIS FIGURE IS DESIGNED TO BE VIEWED OR PRINTED IN COLOR AT 11X17.

3. THIS FIGURE DEPICTS PARCEL BOUNDARIES AS SHOWN IN MONTGOMERY COUNTY GIS PARCEL DATA. THESE BOUNDARIES ARE NOT SURVEY ACCURATE AND THUS MAY NOT ALWAYS MATCH THE SURVEYED BOUNDARY OF THE FACILITY SITE AS DEPICTED ON OTHER FIGURES WHERE APPLICABLE.



PROJECT:		FLAT CREEK SOLAR TOWNS OF CANAJOHARIE AND ROOT MONTGOMERY COUNTY, NY	
TITLE:		TAX PARCEL MAP WITHIN 1000 FEET OF FACILITY SITE	
DRAWN BY:	R. BARBER	PROJ. NO.:	427281.2022.0000
CHECKED BY:	G. CORYELL	FIGURE 3-2 Sheet 8 of 18	
APPROVED BY:	S. KRANES		
DATE:	JULY 2024		
		15 GREENFIELD PKWY., STE. 102 LIVERPOOL, NY 13088	



LEGEND

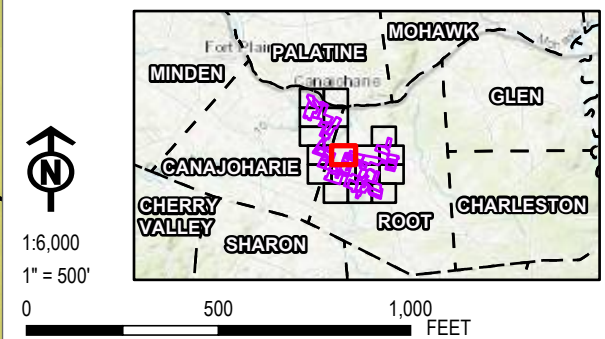
- FACILITY SITE
- 1,000-FT BUFFER OF FACILITY SITE
- TOWN BOUNDARY
- LAND USE
 - AGRICULTURAL
 - COMMUNITY SERVICES
 - PUBLIC SERVICES
 - RECREATION & ENTERTAINMENT
 - RESIDENTIAL
 - VACANT LAND
 - WILD, FORESTED, CONSERVATION LANDS AND PUBLIC PARKS
 - TAX PARCEL


NOTES:

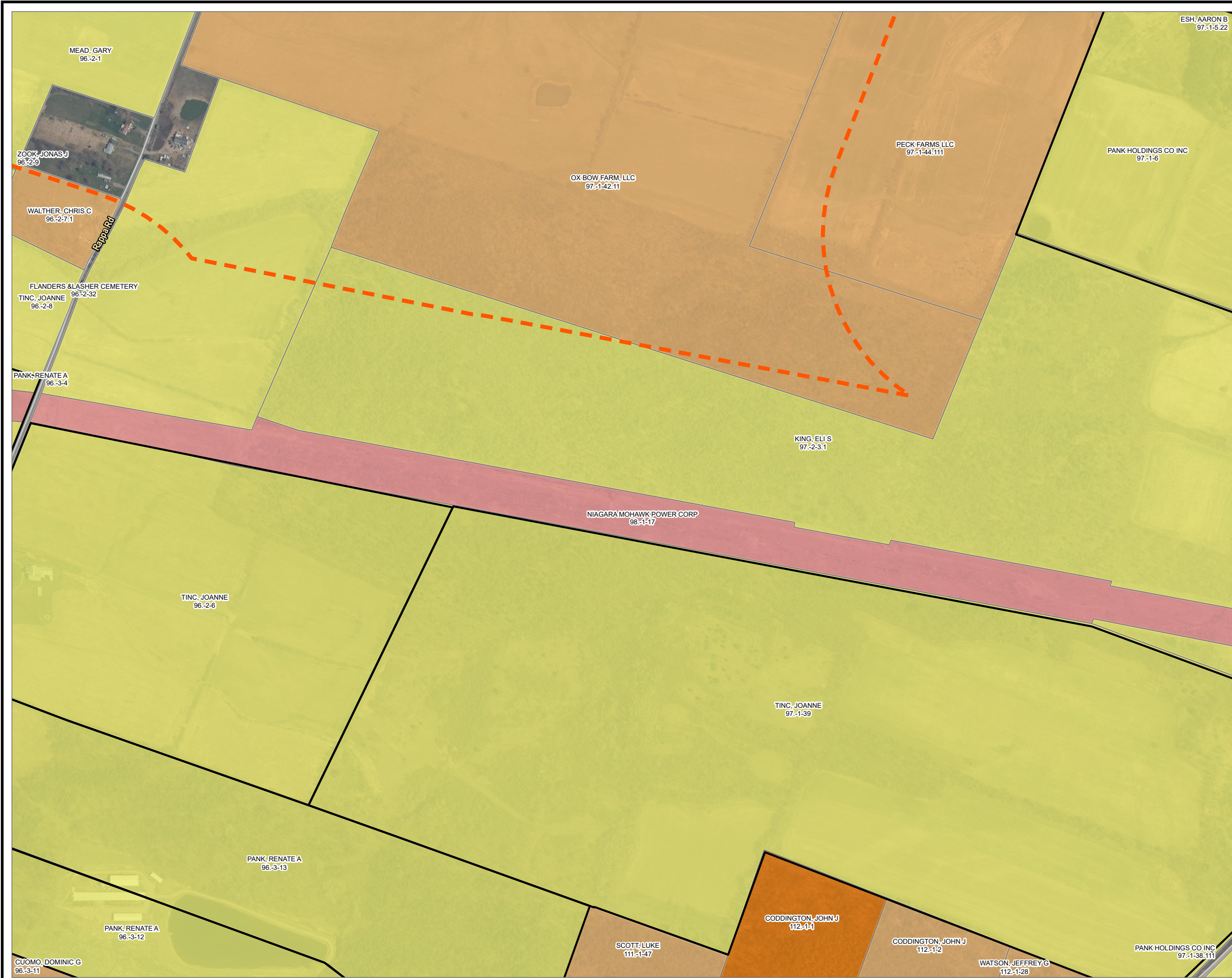
1. LAND USE IS DERIVED FROM LAND USE CODES IN NY PARCEL DATA.

2. THIS FIGURE IS DESIGNED TO BE VIEWED OR PRINTED IN COLOR AT 11X17.

3. THIS FIGURE DEPICTS PARCEL BOUNDARIES AS SHOWN IN MONTGOMERY COUNTY GIS PARCEL DATA. THESE BOUNDARIES ARE NOT SURVEY ACCURATE AND THUS MAY NOT ALWAYS MATCH THE SURVEYED BOUNDARY OF THE FACILITY SITE AS DEPICTED ON OTHER FIGURES WHERE APPLICABLE.



PROJECT: FLAT CREEK SOLAR TOWNS OF CANAJOHARIE AND ROOT MONTGOMERY COUNTY, NY	
TITLE: TAX PARCEL MAP WITHIN 1000 FEET OF FACILITY SITE	
DRAWN BY: R. BARBER	PROJ. NO.: 427281.2022.0000
CHECKED BY: G. CORYELL	FIGURE 3-2 Sheet 9 of 18
APPROVED BY: S. KRANES	
DATE: JULY 2024	
 15 GREENFIELD PKWY., STE. 102 LIVERPOOL, NY 13088	



LEGEND

FACILITY SITE

1,000-FT BUFFER OF FACILITY SITE

TOWN BOUNDARY

LAND USE

AGRICULTURAL

COMMUNITY SERVICES

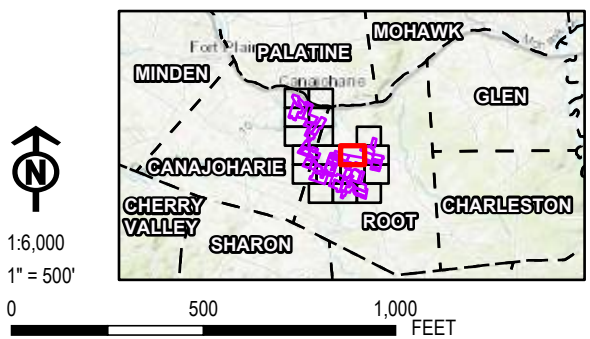
PUBLIC SERVICES

RESIDENTIAL

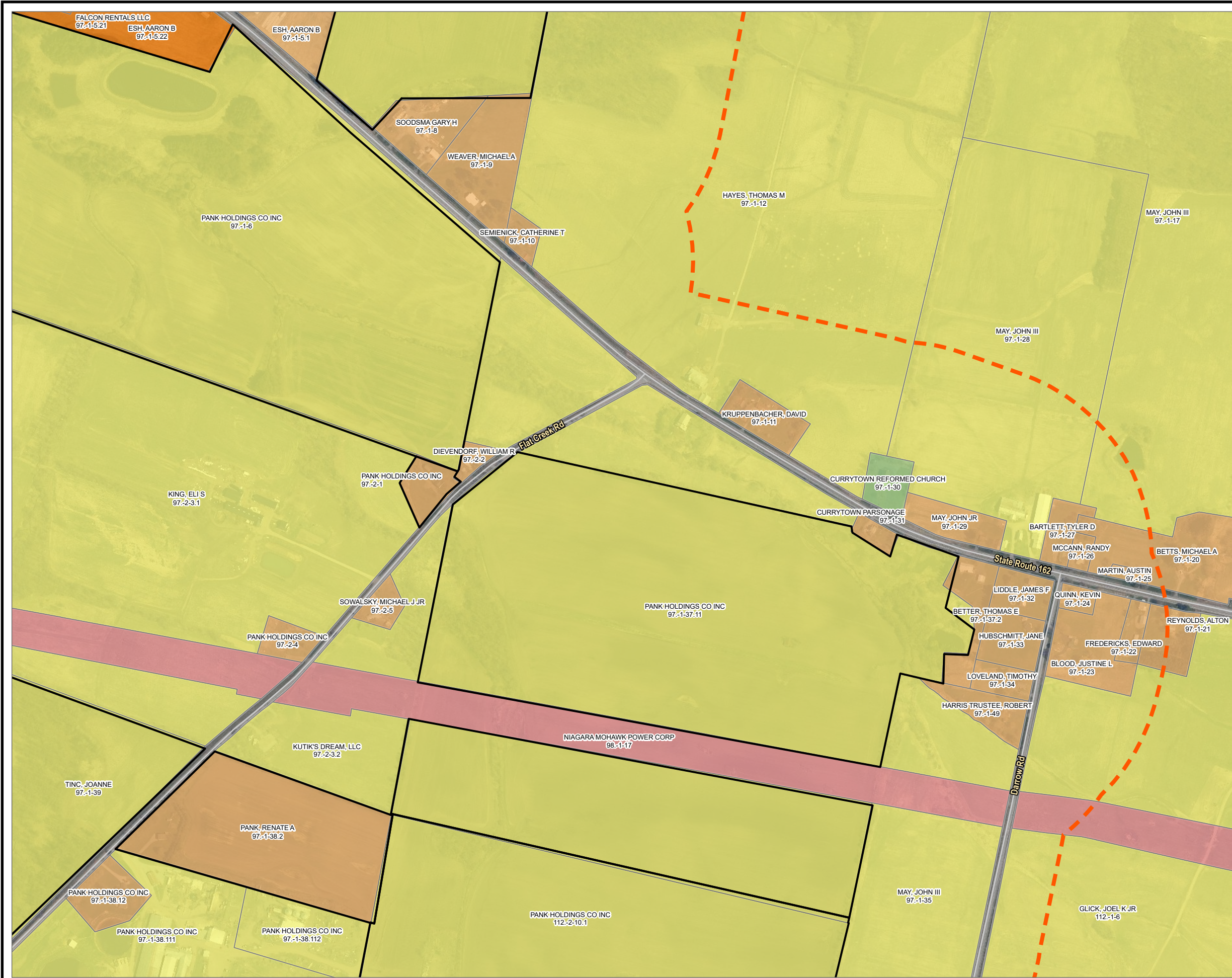
VACANT LAND

TAX PARCEL

- NOTES:**
1. LAND USE IS DERIVED FROM LAND USE CODES IN NY PARCEL DATA.
 2. THIS FIGURE IS DESIGNED TO BE VIEWED OR PRINTED IN COLOR AT 11X17.
 3. THIS FIGURE DEPICTS PARCEL BOUNDARIES AS SHOWN IN MONTGOMERY COUNTY GIS PARCEL DATA. THESE BOUNDARIES ARE NOT SURVEY ACCURATE AND THUS MAY NOT ALWAYS MATCH THE SURVEYED BOUNDARY OF THE FACILITY SITE AS DEPICTED ON OTHER FIGURES WHERE APPLICABLE.



PROJECT:		FLAT CREEK SOLAR TOWNS OF CANAJOHARIE AND ROOT MONTGOMERY COUNTY, NY	
TITLE:		TAX PARCEL MAP WITHIN 1000 FEET OF FACILITY SITE	
DRAWN BY:	R. BARBER	PROJ. NO.:	427281.2022.0000
CHECKED BY:	G. CORYELL	FIGURE 3-2 Sheet 10 of 18	
APPROVED BY:	S. KRANES		
DATE:	JULY 2024		
		15 GREENFIELD PKWY., STE. 102 LIVERPOOL, NY 13088	



LEGEND

FACILITY SITE

1,000-FT BUFFER OF FACILITY SITE

TOWN BOUNDARY

LAND USE

AGRICULTURAL

COMMUNITY SERVICES

PUBLIC SERVICES

RESIDENTIAL

VACANT LAND

TAX PARCEL

NOTES:
1. LAND USE IS DERIVED FROM LAND USE CODES IN NY PARCEL DATA.
2. THIS FIGURE IS DESIGNED TO BE VIEWED OR PRINTED IN COLOR AT 11X17.
3. THIS FIGURE DEPICTS PARCEL BOUNDARIES AS SHOWN IN MONTGOMERY COUNTY GIS PARCEL DATA. THESE BOUNDARIES ARE NOT SURVEY ACCURATE AND THUS MAY NOT ALWAYS MATCH THE SURVEYED BOUNDARY OF THE FACILITY SITE AS DEPICTED ON OTHER FIGURES WHERE APPLICABLE.

N

1:6,000
1" = 500'

0

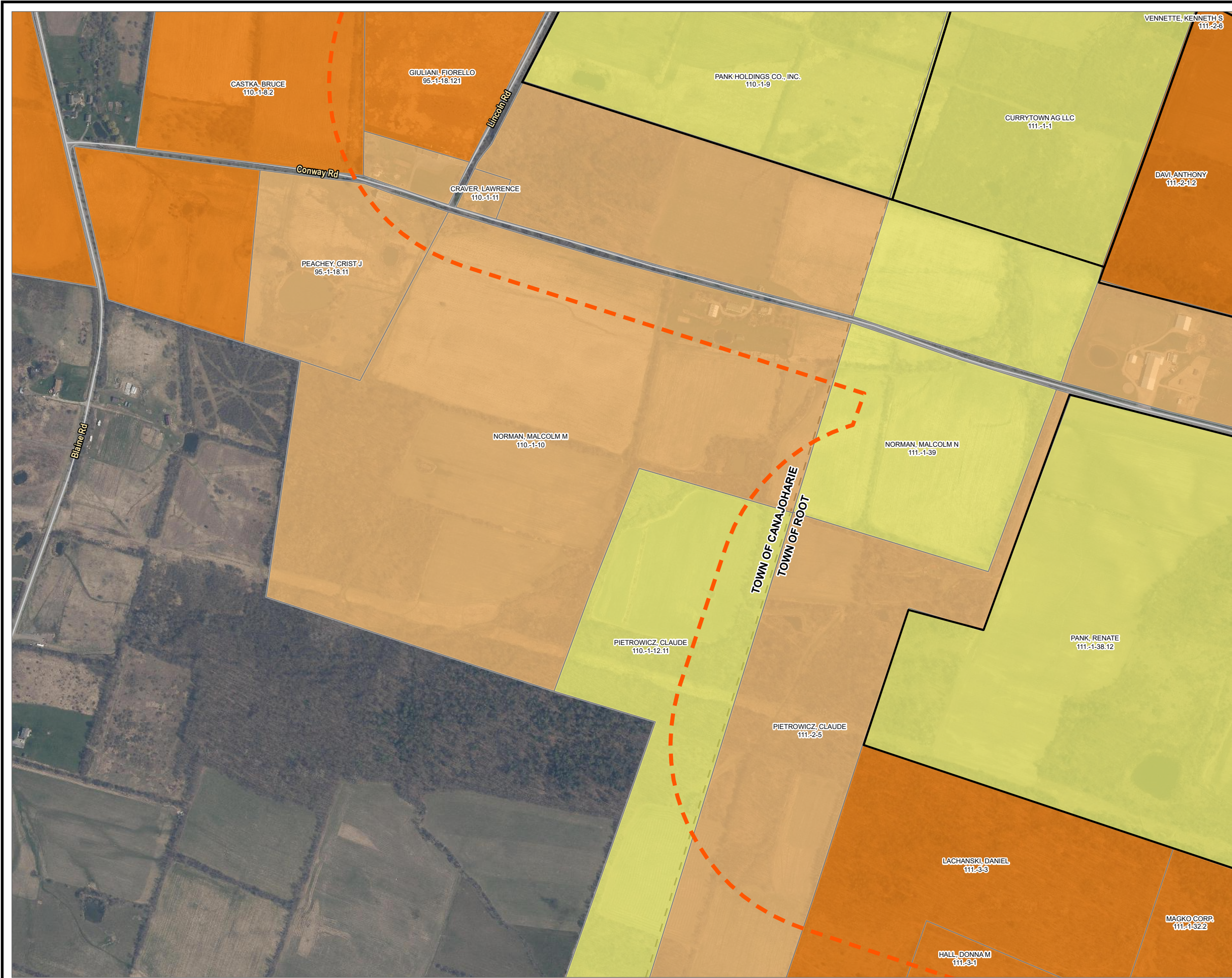
500

1,000

FEET

PROJECT: FLAT CREEK SOLAR TOWNS OF CANAJOHARIE AND ROOT MONTGOMERY COUNTY, NY	
TITLE: TAX PARCEL MAP WITHIN 1000 FEET OF FACILITY SITE	
DRAWN BY: R. BARBER	PROJ. NO.: 427281.2022.0000
CHECKED BY: G. CORYELL	FIGURE 3-2 Sheet 11 of 18
APPROVED BY: S. KRANES	
DATE: JULY 2024	

15 GREENFIELD PKWY., STE. 102
LIVERPOOL, NY 13088



LEGEND

FACILITY SITE

1,000-FT BUFFER OF FACILITY SITE

TOWN BOUNDARY

LAND USE

AGRICULTURAL

RESIDENTIAL

VACANT LAND

TAX PARCEL

NOTES:
1. LAND USE IS DERIVED FROM LAND USE CODES IN NY PARCEL DATA.
2. THIS FIGURE IS DESIGNED TO BE VIEWED OR PRINTED IN COLOR AT 11X17.
3. THIS FIGURE DEPICTS PARCEL BOUNDARIES AS SHOWN IN MONTGOMERY COUNTY GIS PARCEL DATA. THESE BOUNDARIES ARE NOT SURVEY ACCURATE AND THUS MAY NOT ALWAYS MATCH THE SURVEYED BOUNDARY OF THE FACILITY SITE AS DEPICTED ON OTHER FIGURES WHERE APPLICABLE.

N

1:6,000
1" = 500'

0

500

1,000

FEET

PROJECT:
**FLAT CREEK SOLAR
TOWNS OF CANAJOHARIE AND ROOT
MONTGOMERY COUNTY, NY**

TITLE:
**TAX PARCEL MAP WITHIN
1000 FEET OF FACILITY SITE**

DRAWN BY: R. BARBER

PROJ. NO.: 427281.2022.0000

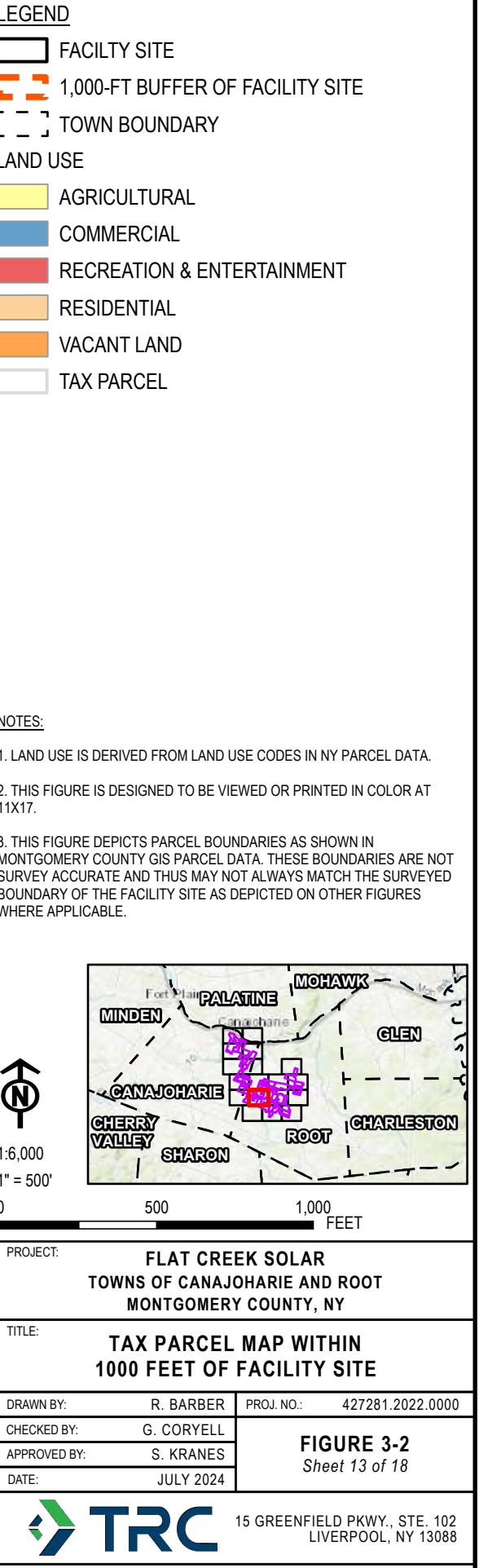
CHECKED BY: G. CORYELL

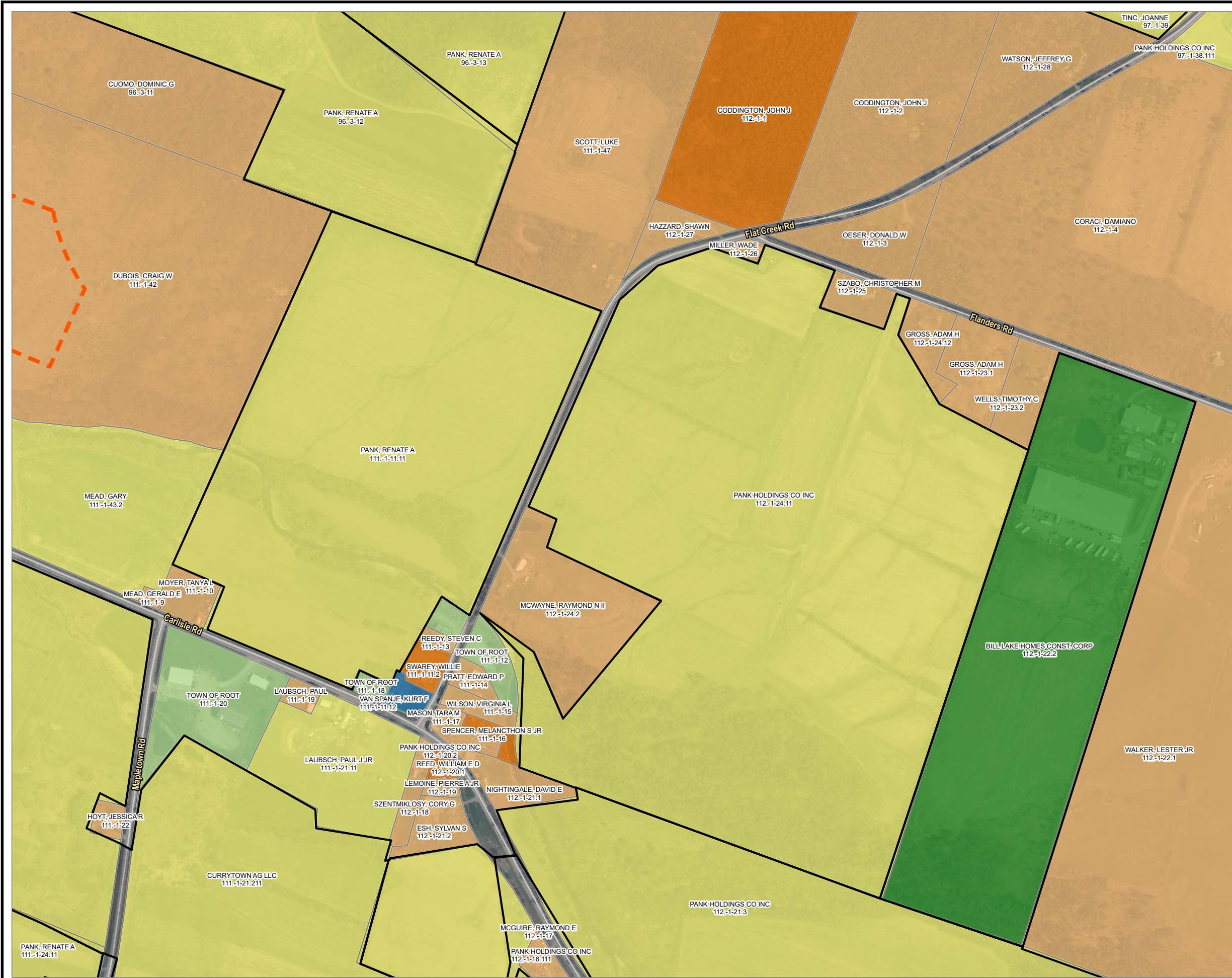
APPROVED BY: S. KRANES

DATE: JULY 2024

FIGURE 3-2
Sheet 12 of 18

15 GREENFIELD PKWY., STE. 102
LIVERPOOL, NY 13088

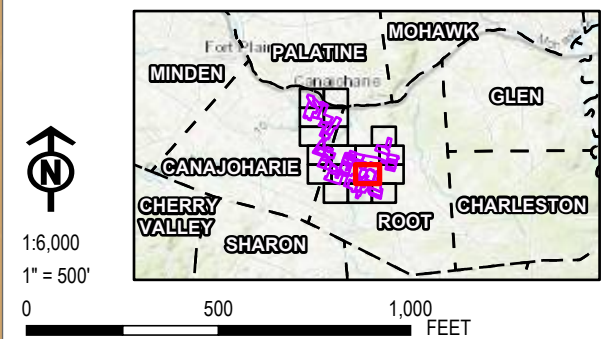





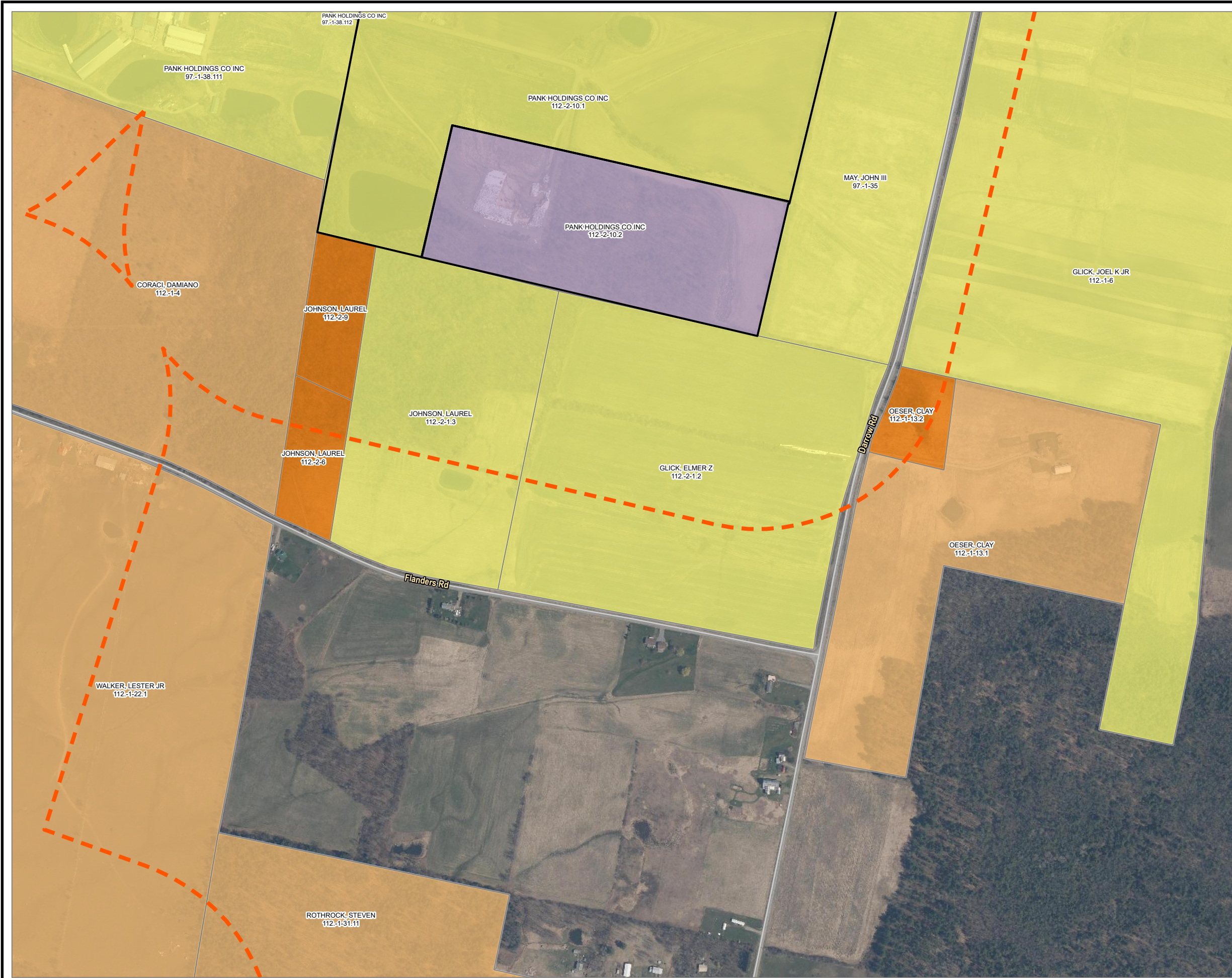
LEGEND

- FACILITY SITE
- 1,000-FT BUFFER OF FACILITY SITE
- TOWN BOUNDARY
- LAND USE**
- AGRICULTURAL
- COMMERCIAL
- COMMUNITY SERVICES
- INDUSTRIAL
- RESIDENTIAL
- VACANT LAND
- TAX PARCEL

- NOTES:**
1. LAND USE IS DERIVED FROM LAND USE CODES IN NY PARCEL DATA.
 2. THIS FIGURE IS DESIGNED TO BE VIEWED OR PRINTED IN COLOR AT 11X17.
 3. THIS FIGURE DEPICTS PARCEL BOUNDARIES AS SHOWN IN MONTGOMERY COUNTY GIS PARCEL DATA. THESE BOUNDARIES ARE NOT SURVEY ACCURATE AND THUS MAY NOT ALWAYS MATCH THE SURVEYED BOUNDARY OF THE FACILITY SITE AS DEPICTED ON OTHER FIGURES WHERE APPLICABLE.



PROJECT: FLAT CREEK SOLAR TOWNS OF CANAJOHARIE AND ROOT MONTGOMERY COUNTY, NY	
TITLE: TAX PARCEL MAP WITHIN 1000 FEET OF FACILITY SITE	
DRAWN BY: R. BARBER	PROJ. NO.: 427281.2022.0000
CHECKED BY: G. CORYELL	FIGURE 3-2 <i>Sheet 14 of 18</i>
APPROVED BY: S. KRANES	
DATE: JULY 2024	
 15 GREENFIELD PKWY., STE. 102 LIVERPOOL, NY 13088	



LEGEND

FACILITY SITE

1,000-FT BUFFER OF FACILITY SITE

TOWN BOUNDARY

LAND USE

AGRICULTURAL

RESIDENTIAL

VACANT LAND

WILD, FORESTED, CONSERVATION LANDS AND PUBLIC PARKS

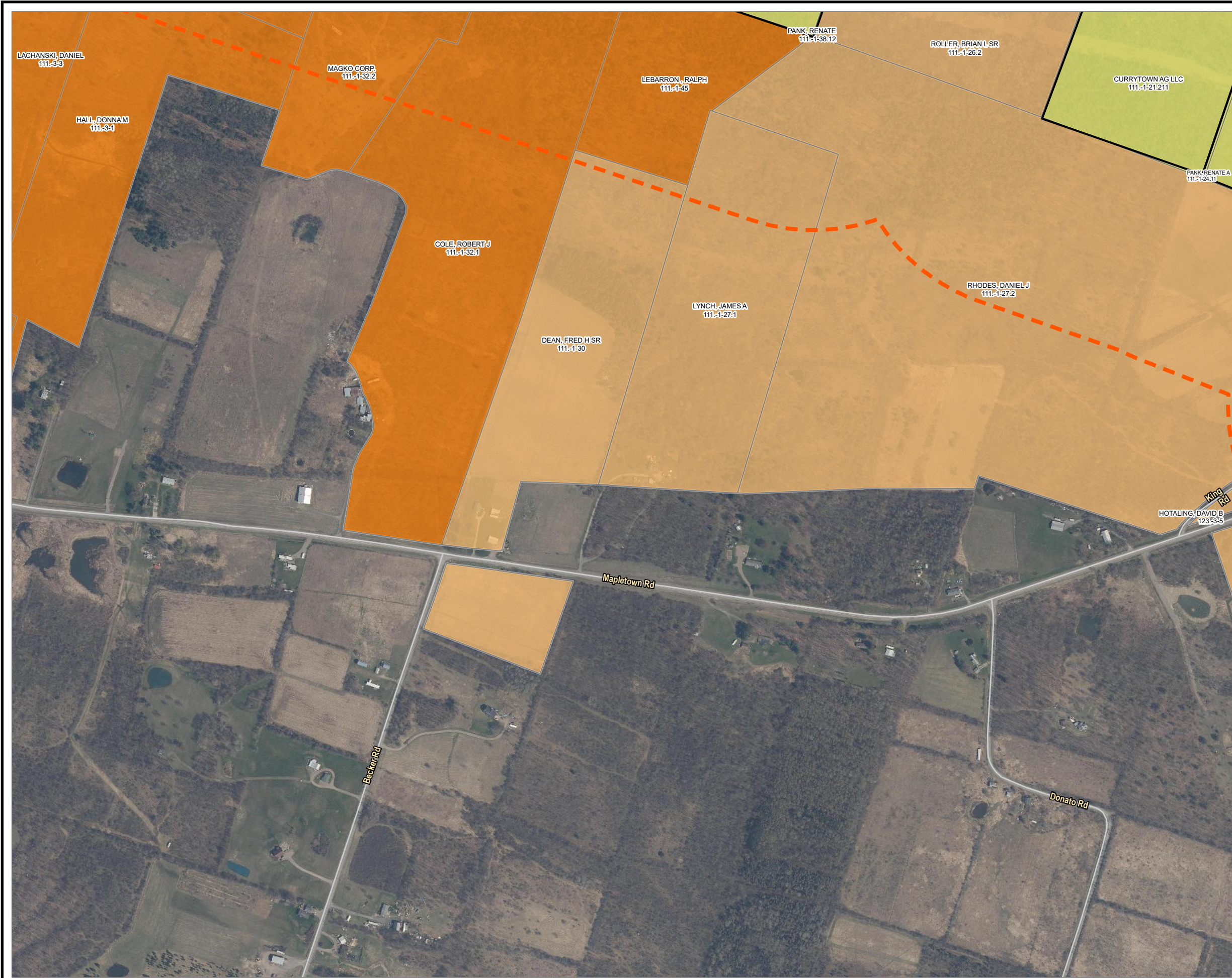
TAX PARCEL

- NOTES:**
1. LAND USE IS DERIVED FROM LAND USE CODES IN NY PARCEL DATA.
 2. THIS FIGURE IS DESIGNED TO BE VIEWED OR PRINTED IN COLOR AT 11X17.
 3. THIS FIGURE DEPICTS PARCEL BOUNDARIES AS SHOWN IN MONTGOMERY COUNTY GIS PARCEL DATA. THESE BOUNDARIES ARE NOT SURVEY ACCURATE AND THUS MAY NOT ALWAYS MATCH THE SURVEYED BOUNDARY OF THE FACILITY SITE AS DEPICTED ON OTHER FIGURES WHERE APPLICABLE.

1:6,000
1" = 500'

0 500 1,000 FEET

PROJECT:		FLAT CREEK SOLAR TOWNS OF CANAJOHARIE AND ROOT MONTGOMERY COUNTY, NY	
TITLE:		TAX PARCEL MAP WITHIN 1000 FEET OF FACILITY SITE	
DRAWN BY:	R. BARBER	PROJ. NO.:	427281.2022.0000
CHECKED BY:	G. CORYELL	FIGURE 3-2 Sheet 15 of 18	
APPROVED BY:	S. KRANES		
DATE:	JULY 2024		



LEGEND

FACILITY SITE

1,000-FT BUFFER OF FACILITY SITE

TOWN BOUNDARY

LAND USE

AGRICULTURAL

RESIDENTIAL

VACANT LAND

TAX PARCEL

NOTES:
1. LAND USE IS DERIVED FROM LAND USE CODES IN NY PARCEL DATA.
2. THIS FIGURE IS DESIGNED TO BE VIEWED OR PRINTED IN COLOR AT 11X17.
3. THIS FIGURE DEPICTS PARCEL BOUNDARIES AS SHOWN IN MONTGOMERY COUNTY GIS PARCEL DATA. THESE BOUNDARIES ARE NOT SURVEY ACCURATE AND THUS MAY NOT ALWAYS MATCH THE SURVEYED BOUNDARY OF THE FACILITY SITE AS DEPICTED ON OTHER FIGURES WHERE APPLICABLE.

N

1:6,000
1" = 500'

0

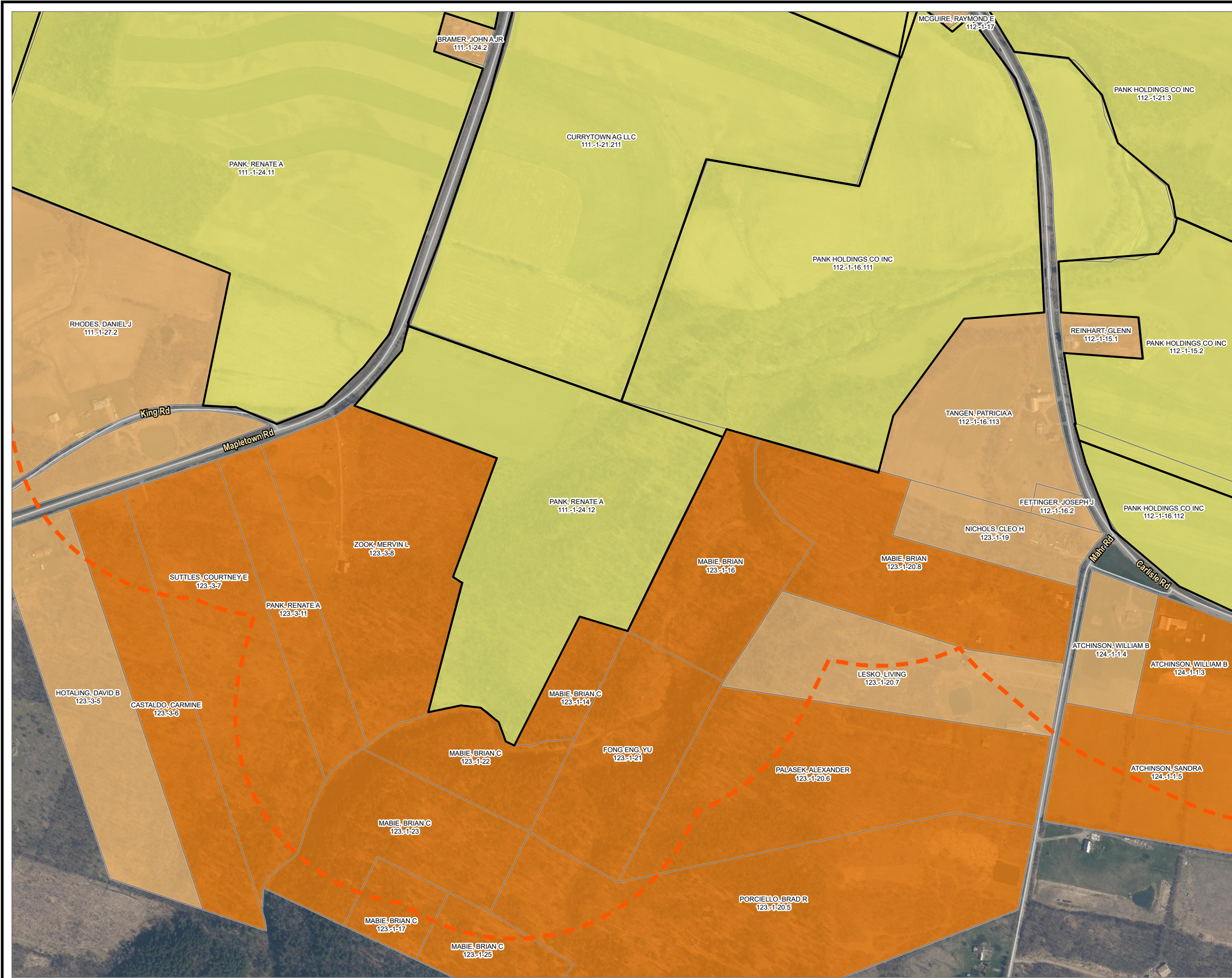
500

1,000

FEET

PROJECT:		FLAT CREEK SOLAR TOWNS OF CANAJOHARIE AND ROOT MONTGOMERY COUNTY, NY	
TITLE:		TAX PARCEL MAP WITHIN 1000 FEET OF FACILITY SITE	
DRAWN BY:	R. BARBER	PROJ. NO.:	427281.2022.0000
CHECKED BY:	G. CORYELL	FIGURE 3-2 Sheet 16 of 18	
APPROVED BY:	S. KRANES		
DATE:	JULY 2024		

15 GREENFIELD PKWY., STE. 102
LIVERPOOL, NY 13088



LEGEND

FACILITY SITE

1,000-FT BUFFER OF FACILITY SITE

TOWN BOUNDARY

LAND USE

AGRICULTURAL

RESIDENTIAL

VACANT LAND

TAX PARCEL

NOTES:
1. LAND USE IS DERIVED FROM LAND USE CODES IN NY PARCEL DATA.
2. THIS FIGURE IS DESIGNED TO BE VIEWED OR PRINTED IN COLOR AT 11X17.
3. THIS FIGURE DEPICTS PARCEL BOUNDARIES AS SHOWN IN MONTGOMERY COUNTY GIS PARCEL DATA. THESE BOUNDARIES ARE NOT SURVEY ACCURATE AND THUS MAY NOT ALWAYS MATCH THE SURVEYED BOUNDARY OF THE FACILITY SITE AS DEPICTED ON OTHER FIGURES WHERE APPLICABLE.

N

1:6,000
1" = 500'

0

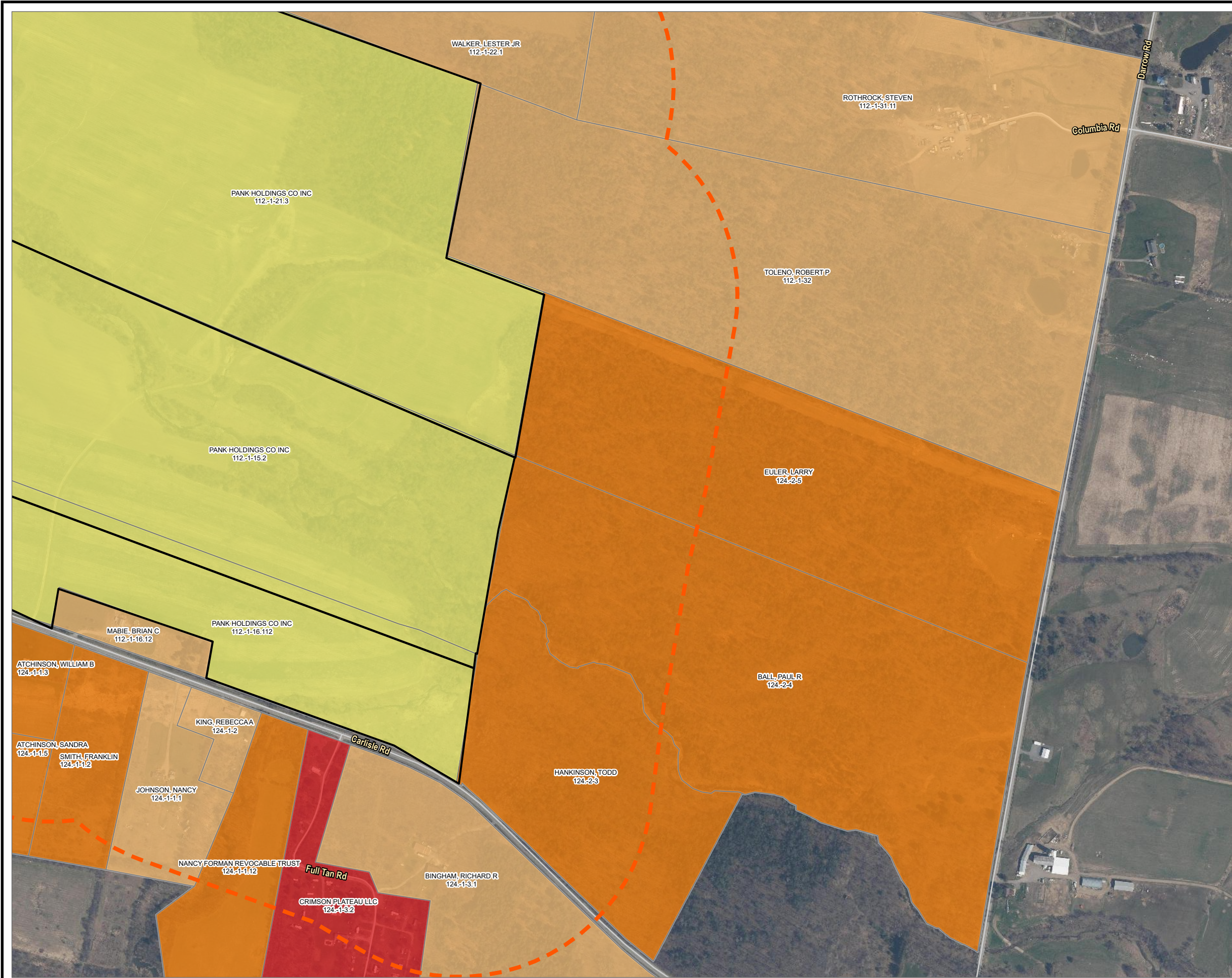
500

1,000

FEET

PROJECT: FLAT CREEK SOLAR TOWNS OF CANAJOHARIE AND ROOT MONTGOMERY COUNTY, NY	
TITLE: TAX PARCEL MAP WITHIN 1000 FEET OF FACILITY SITE	
DRAWN BY: R. BARBER	PROJ. NO.: 427281.2022.0000
CHECKED BY: G. CORYELL	FIGURE 3-2 Sheet 17 of 18
APPROVED BY: S. KRANES	
DATE: JULY 2024	

15 GREENFIELD PKWY., STE. 102
LIVERPOOL, NY 13088



LEGEND

FACILITY SITE

1,000-FT BUFFER OF FACILITY SITE

TOWN BOUNDARY

LAND USE

AGRICULTURAL

RECREATION & ENTERTAINMENT

RESIDENTIAL

VACANT LAND

TAX PARCEL

NOTES:
1. LAND USE IS DERIVED FROM LAND USE CODES IN NY PARCEL DATA.
2. THIS FIGURE IS DESIGNED TO BE VIEWED OR PRINTED IN COLOR AT 11X17.
3. THIS FIGURE DEPICTS PARCEL BOUNDARIES AS SHOWN IN MONTGOMERY COUNTY GIS PARCEL DATA. THESE BOUNDARIES ARE NOT SURVEY ACCURATE AND THUS MAY NOT ALWAYS MATCH THE SURVEYED BOUNDARY OF THE FACILITY SITE AS DEPICTED ON OTHER FIGURES WHERE APPLICABLE.

N

1:6,000
1" = 500'

0

500

1,000

FEET

PROJECT:

FLAT CREEK SOLAR
TOWNS OF CANAJOHARIE AND ROOT
MONTGOMERY COUNTY, NY

TITLE:

TAX PARCEL MAP WITHIN
1000 FEET OF FACILITY SITE

DRAWN BY:

R. BARBER

PROJ. NO.:

427281.2022.0000

CHECKED BY:

G. CORYELL

APPROVED BY:

S. KRANES

DATE:

JULY 2024

FIGURE 3-2
Sheet 18 of 18

15 GREENFIELD PKWY., STE. 102
LIVERPOOL, NY 13088