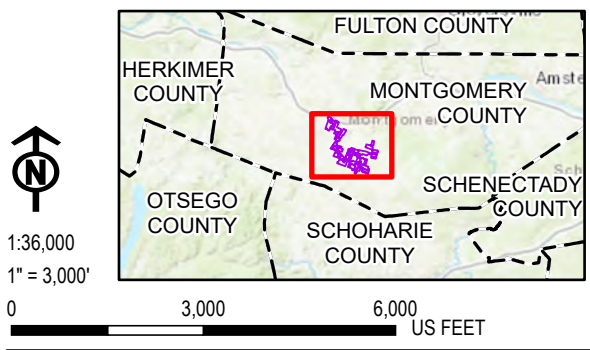


- LEGEND**
- FACILITY SITE
  - PROPOSED LIMIT OF DISTURBANCE
  - PROPOSED POINT OF INTERCONNECTION
  - EXISTING 115 KV TRANSMISSION LINE
  - PROPOSED COLLECTION ALIGNMENT
  - PROPOSED FENCE LINE
  - PROPOSED ACCESS ROAD
  - PROPOSED PV ARRAY
  - PROPOSED SUBSTATION
  - PROPOSED SWITCH YARD
  - TREE CLEARING
  - VILLAGE BOUNDARY
  - TOWN BOUNDARY

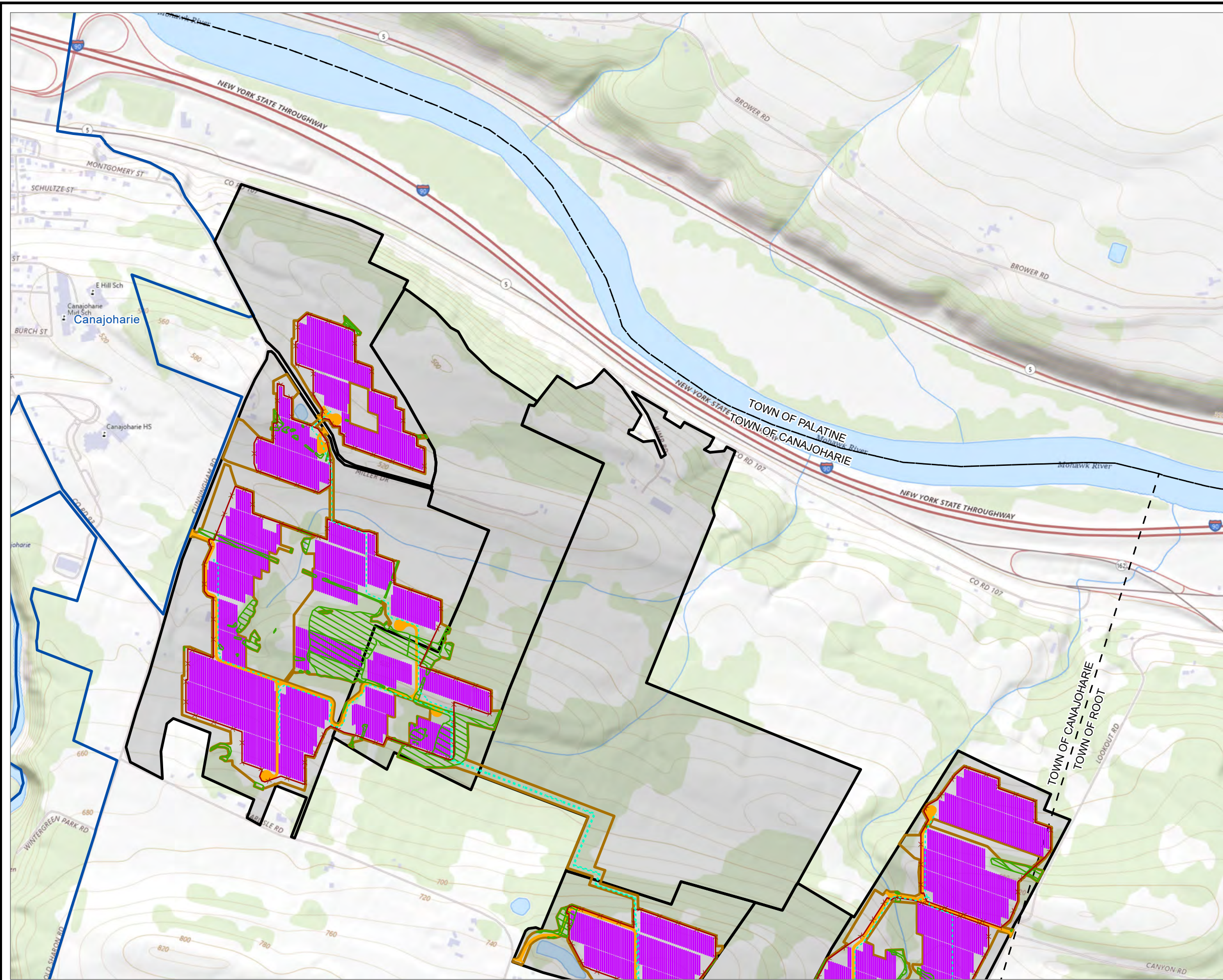
**NOTES:**  
 1. THIS FIGURE IS DESIGNED TO BE VIEWED OR PRINTED IN COLOR AT 11X17.

BASE MAP: USGS NATIONAL MAP  
 DATA SOURCES: SUNEAST, ESRI, TRC, USGS



<b>PROJECT:</b>		<b>FLAT CREEK SOLAR TOWNS OF CANAJOHARIE AND ROOT MONTGOMERY COUNTY, NY</b>
<b>TITLE:</b>		<b>TOPOGRAPHIC MAPS OF FACILITY SITE</b>
DRAWN BY:	R. BARBER	PROJ. NO.: 427281.2022.0000
CHECKED BY:	G. CORYELL	<b>FIGURE 3-1 Overview</b>
APPROVED BY:	S. KRANES	
DATE:	JULY 2024	



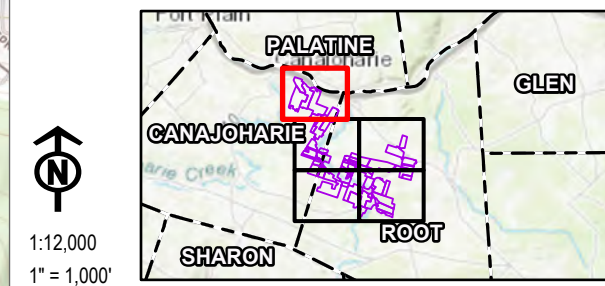


**LEGEND**

- FACILITY SITE
- PROPOSED LIMIT OF DISTURBANCE
- PROPOSED POINT OF INTERCONNECTION
- EXISTING 115 KV TRANSMISSION LINE
- PROPOSED COLLECTION ALIGNMENT
- ✕ PROPOSED FENCE LINE
- PROPOSED ACCESS ROAD
- PROPOSED PV ARRAY
- PROPOSED SUBSTATION
- TREE CLEARING
- VILLAGE BOUNDARY
- TOWN BOUNDARY

**NOTES:**  
 1. THIS FIGURE IS DESIGNED TO BE VIEWED OR PRINTED IN COLOR AT 11X17.

BASE MAP: USGS NATIONAL MAP  
 DATA SOURCES: SUNEAST, ESRI, TRC, USGS



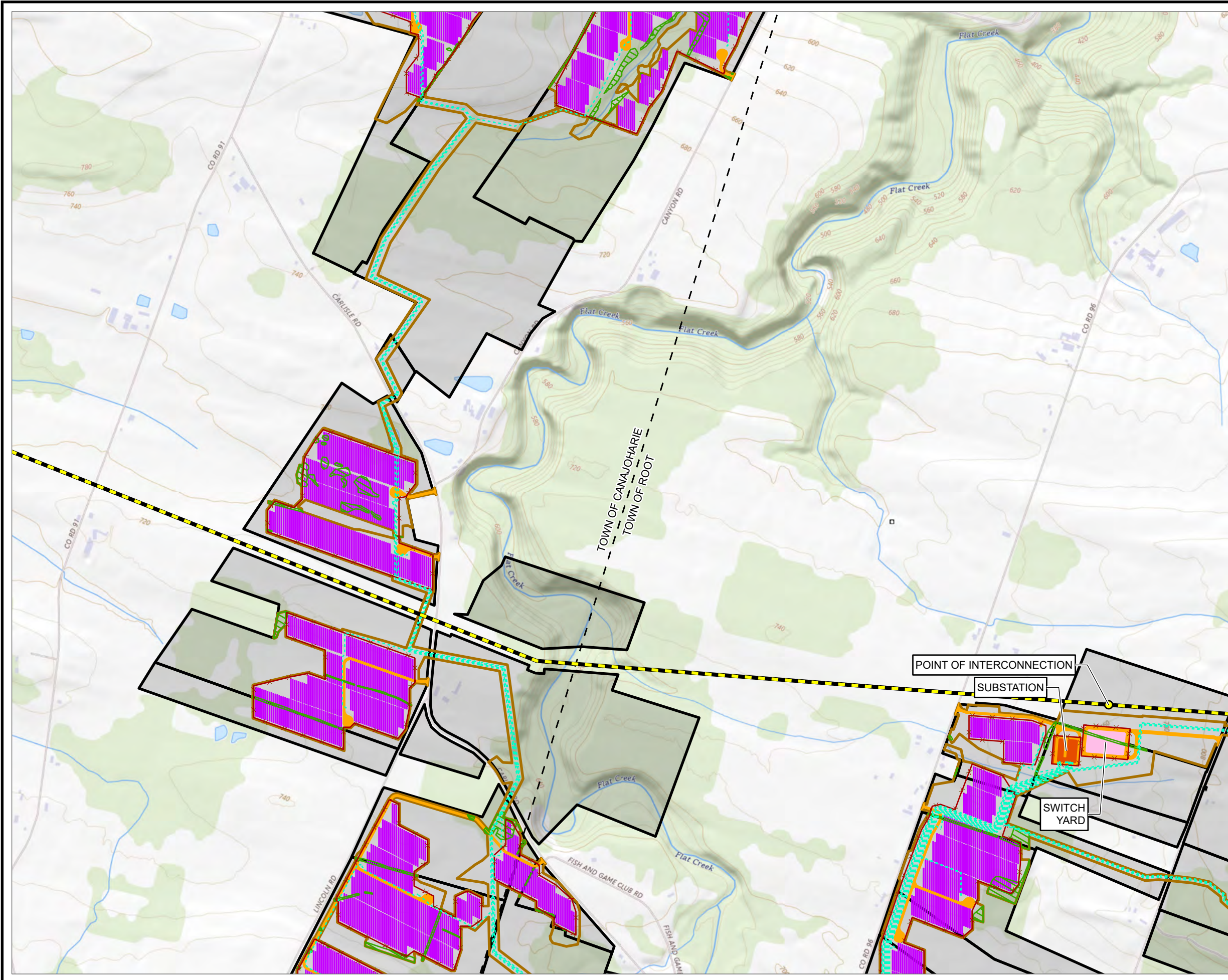
1:12,000  
 1" = 1,000'  
 0 1,000 2,000 US FEET

PROJECT: **FLAT CREEK SOLAR  
 TOWNS OF CANAJOHARIE AND ROOT  
 MONTGOMERY COUNTY, NY**

TITLE: **TOPOGRAPHIC MAPS OF FACILITY SITE**

DRAWN BY: R. BARBER	PROJ. NO.: 427281.2022.0000
CHECKED BY: G. CORYELL	<b>FIGURE 3-1</b> Sheet 1 of 5
APPROVED BY: S. KRANES	
DATE: JULY 2024	

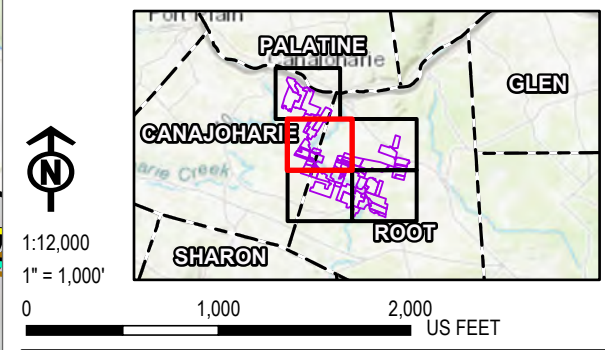




- LEGEND**
- FACILITY SITE
  - PROPOSED LIMIT OF DISTURBANCE
  - PROPOSED POINT OF INTERCONNECTION
  - EXISTING 115 KV TRANSMISSION LINE
  - PROPOSED COLLECTION ALIGNMENT
  - ✕ PROPOSED FENCE LINE
  - PROPOSED ACCESS ROAD
  - PROPOSED PV ARRAY
  - PROPOSED SUBSTATION
  - PROPOSED SWITCH YARD
  - TREE CLEARING
  - TOWN BOUNDARY

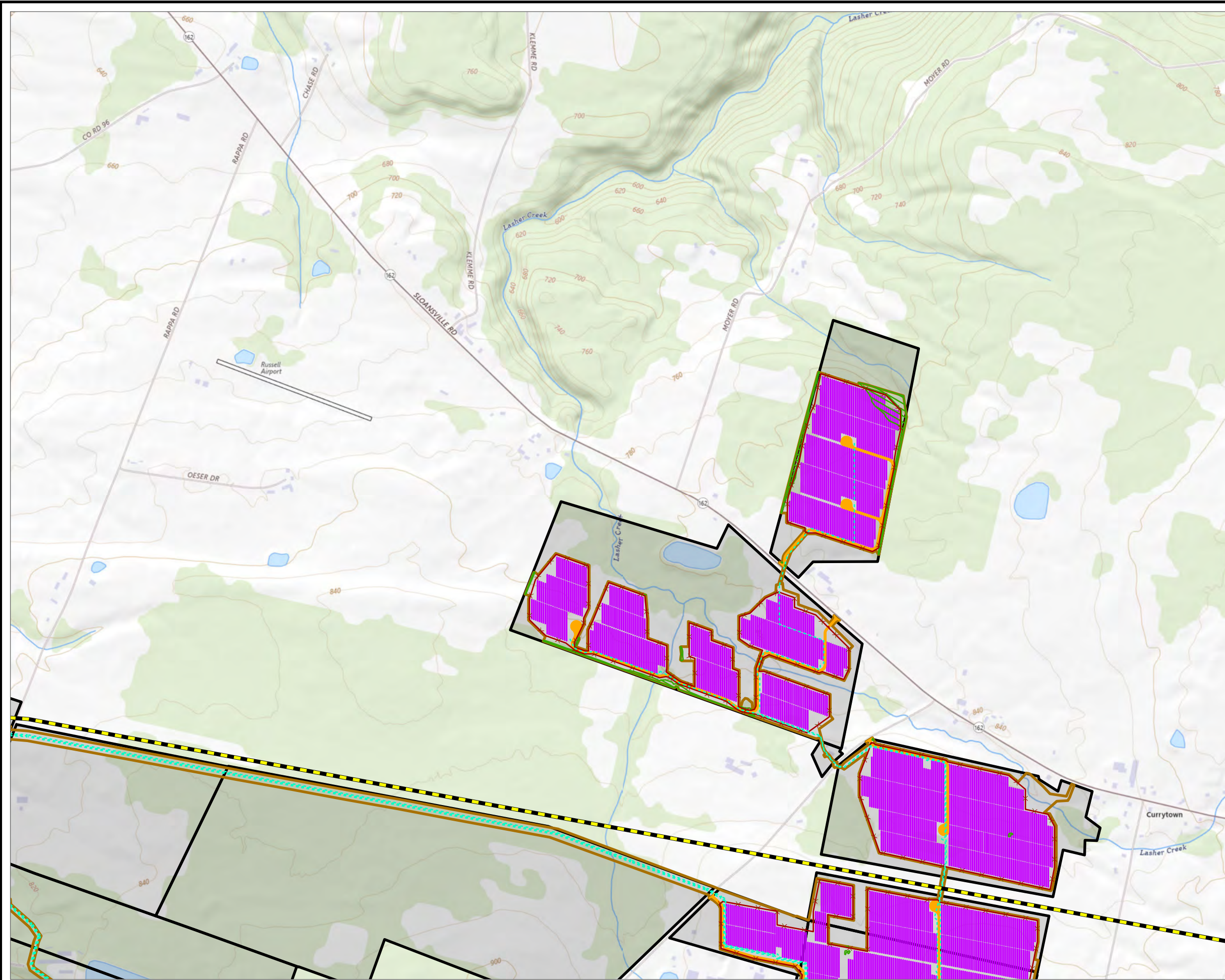
**NOTES:**  
 1. THIS FIGURE IS DESIGNED TO BE VIEWED OR PRINTED IN COLOR AT 11X17.

BASE MAP: USGS NATIONAL MAP  
 DATA SOURCES: SUNEAST, ESRI, TRC, USGS



<b>PROJECT:</b>		<b>FLAT CREEK SOLAR TOWNS OF CANAJOHARIE AND ROOT MONTGOMERY COUNTY, NY</b>
<b>TITLE:</b>		<b>TOPOGRAPHIC MAPS OF FACILITY SITE</b>
DRAWN BY:	R. BARBER	PROJ. NO.: 427281.2022.0000
CHECKED BY:	G. CORYELL	<b>FIGURE 3-1</b> Sheet 2 of 5
APPROVED BY:	S. KRANES	
DATE:	JULY 2024	



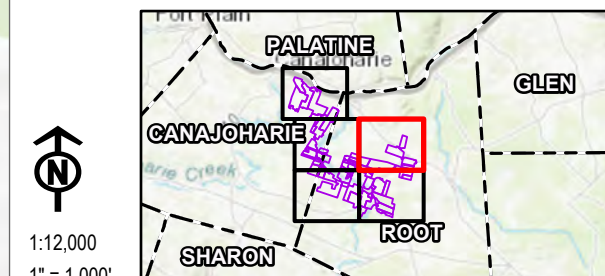


**LEGEND**

- FACILITY SITE
- PROPOSED LIMIT OF DISTURBANCE
- PROPOSED POINT OF INTERCONNECTION
- EXISTING 115 KV TRANSMISSION LINE
- PROPOSED COLLECTION ALIGNMENT
- PROPOSED FENCE LINE
- PROPOSED ACCESS ROAD
- PROPOSED PV ARRAY
- PROPOSED SUBSTATION
- TREE CLEARING
- TOWN BOUNDARY

**NOTES:**  
 1. THIS FIGURE IS DESIGNED TO BE VIEWED OR PRINTED IN COLOR AT 11X17.

BASE MAP: USGS NATIONAL MAP  
 DATA SOURCES: SUNEAST, ESRI, TRC, USGS



1:12,000  
 1" = 1,000'

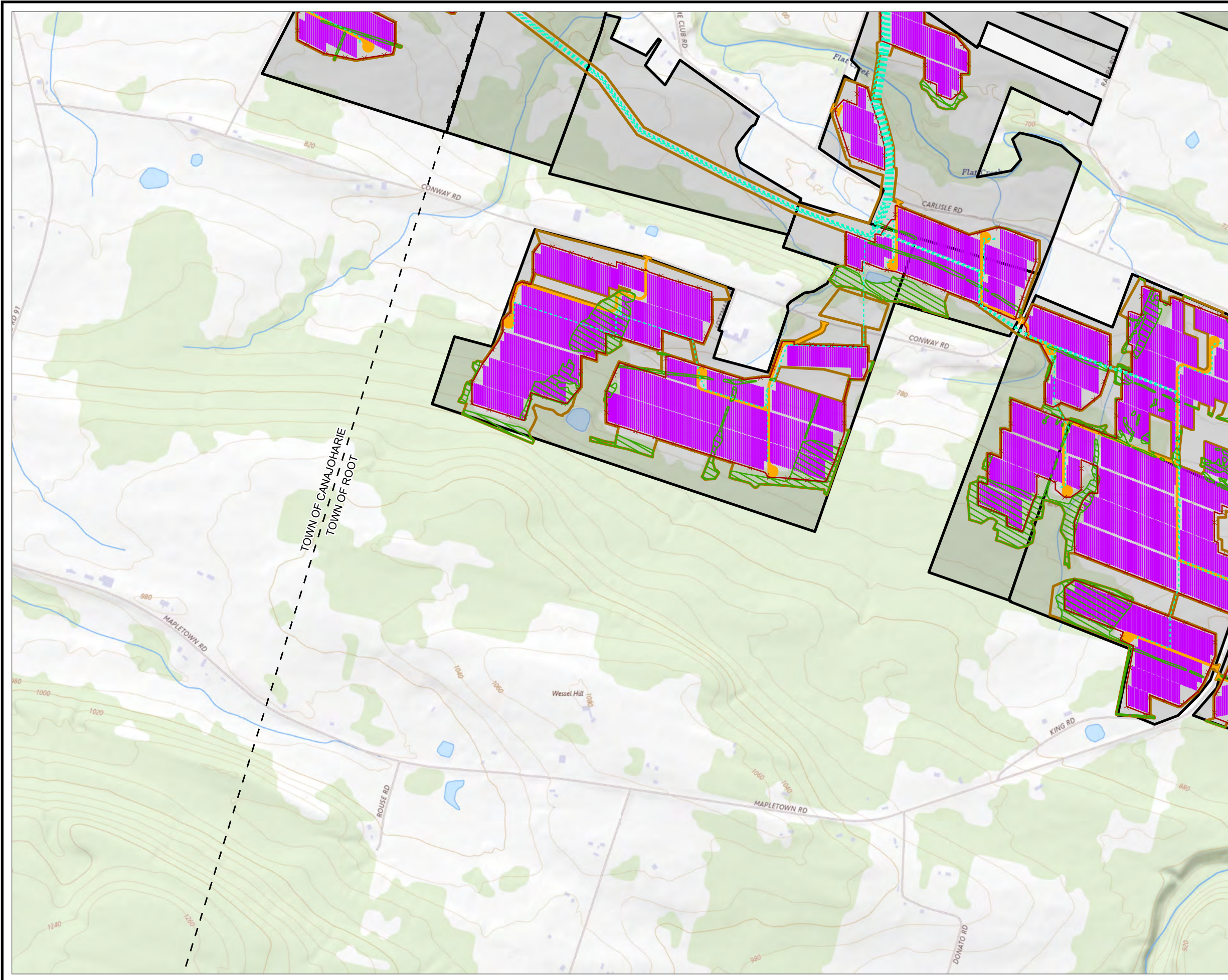


PROJECT: **FLAT CREEK SOLAR**  
**TOWNS OF CANAJOHARIE AND ROOT**  
**MONTGOMERY COUNTY, NY**

TITLE: **TOPOGRAPHIC MAPS OF FACILITY SITE**

DRAWN BY: R. BARBER	PROJ. NO.: 427281.2022.0000
CHECKED BY: G. CORYELL	<b>FIGURE 3-1</b> Sheet 3 of 5
APPROVED BY: S. KRANES	
DATE: JULY 2024	

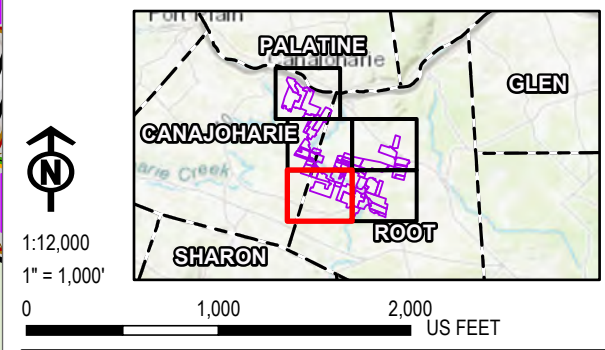




- LEGEND**
- FACILITY SITE
  - PROPOSED LIMIT OF DISTURBANCE
  - PROPOSED POINT OF INTERCONNECTION
  - EXISTING 115 KV TRANSMISSION LINE
  - PROPOSED COLLECTION ALIGNMENT
  - PROPOSED FENCE LINE
  - PROPOSED ACCESS ROAD
  - PROPOSED PV ARRAY
  - PROPOSED SUBSTATION
  - TREE CLEARING
  - TOWN BOUNDARY

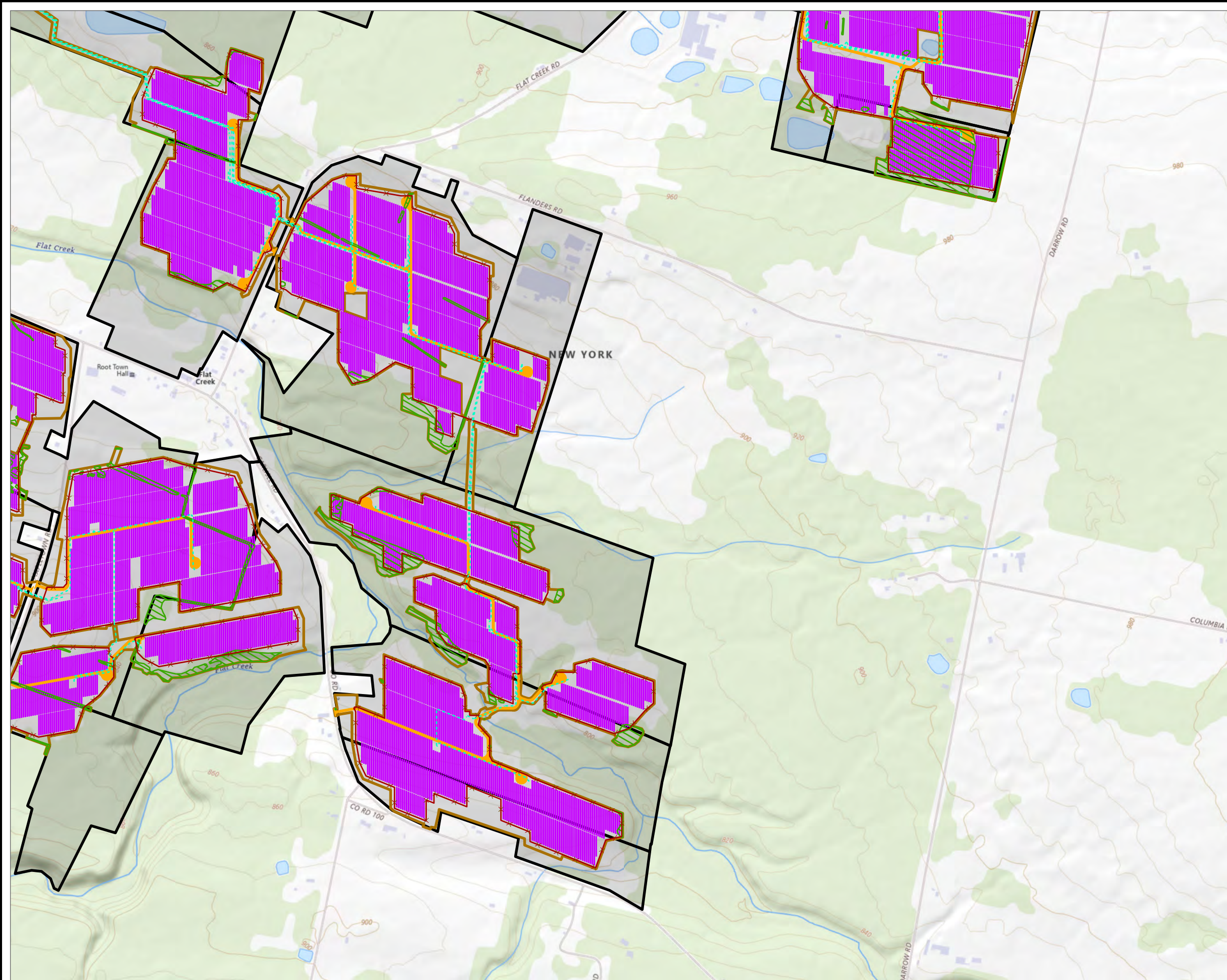
**NOTES:**  
 1. THIS FIGURE IS DESIGNED TO BE VIEWED OR PRINTED IN COLOR AT 11X17.

BASE MAP: USGS NATIONAL MAP  
 DATA SOURCES: SUNEAST, ESRI, TRC, USGS














PROJECT:		<b>FLAT CREEK SOLAR</b> TOWNS OF CANAJOHARIE AND ROOT MONTGOMERY COUNTY, NY	
TITLE: <b>TOPOGRAPHIC MAPS OF FACILITY SITE</b>			
DRAWN BY:	R. BARBER	PROJ. NO.:	427281.2022.0000
CHECKED BY:	G. CORYELL	<b>FIGURE 3-1</b> Sheet 4 of 5	
APPROVED BY:	S. KRANES		
DATE:	JULY 2024		



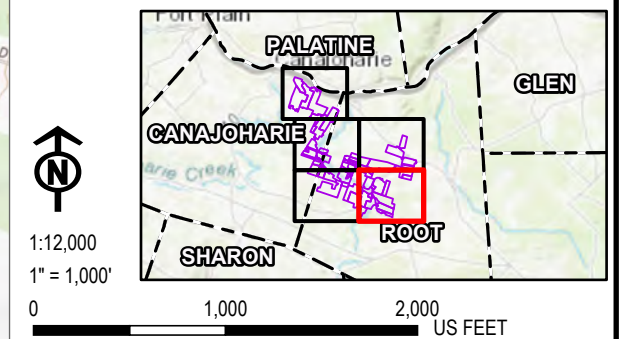


**LEGEND**

-  FACILITY SITE
-  PROPOSED LIMIT OF DISTURBANCE
-  PROPOSED POINT OF INTERCONNECTION
-  EXISTING 115 KV TRANSMISSION LINE
-  PROPOSED COLLECTION ALIGNMENT
-  PROPOSED FENCE LINE
-  PROPOSED ACCESS ROAD
-  PROPOSED PV ARRAY
-  PROPOSED SUBSTATION
-  TREE CLEARING
-  TOWN BOUNDARY

**NOTES:**  
 1. THIS FIGURE IS DESIGNED TO BE VIEWED OR PRINTED IN COLOR AT 11X17.

BASE MAP: USGS NATIONAL MAP  
 DATA SOURCES: SUNEAST, ESRI, TRC, USGS



1:12,000  
 1" = 1,000'  
 0 1,000 2,000 US FEET

PROJECT:		<b>FLAT CREEK SOLAR</b>	
		<b>TOWNS OF CANAJOHARIE AND ROOT</b>	
		<b>MONTGOMERY COUNTY, NY</b>	
TITLE:			
<b>TOPOGRAPHIC MAPS OF FACILITY SITE</b>			
DRAWN BY:	R. BARBER	PROJ. NO.:	427281.2022.0000
CHECKED BY:	G. CORYELL	<b>FIGURE 3-1</b> Sheet 5 of 5	
APPROVED BY:	S. KRANES		
DATE:	JULY 2024		