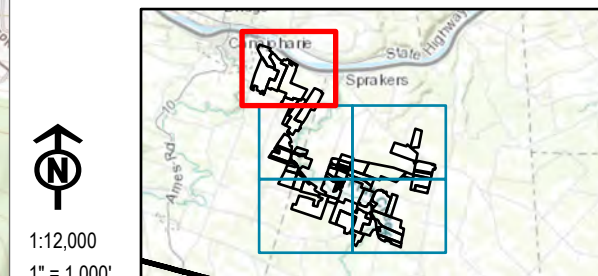


LEGEND

- FACILITY SITE
- PROPOSED COLLECTION ALIGNMENT
- PROPOSED FENCE LINE
- PROPOSED ACCESS ROAD
- PROPOSED PV ARRAY
- PROPOSED INVERTER
- TOWN BOUNDARY

NOTES:
 1. THIS FIGURE IS DESIGNED TO BE VIEWED OR PRINTED IN COLOR AT 11X17.

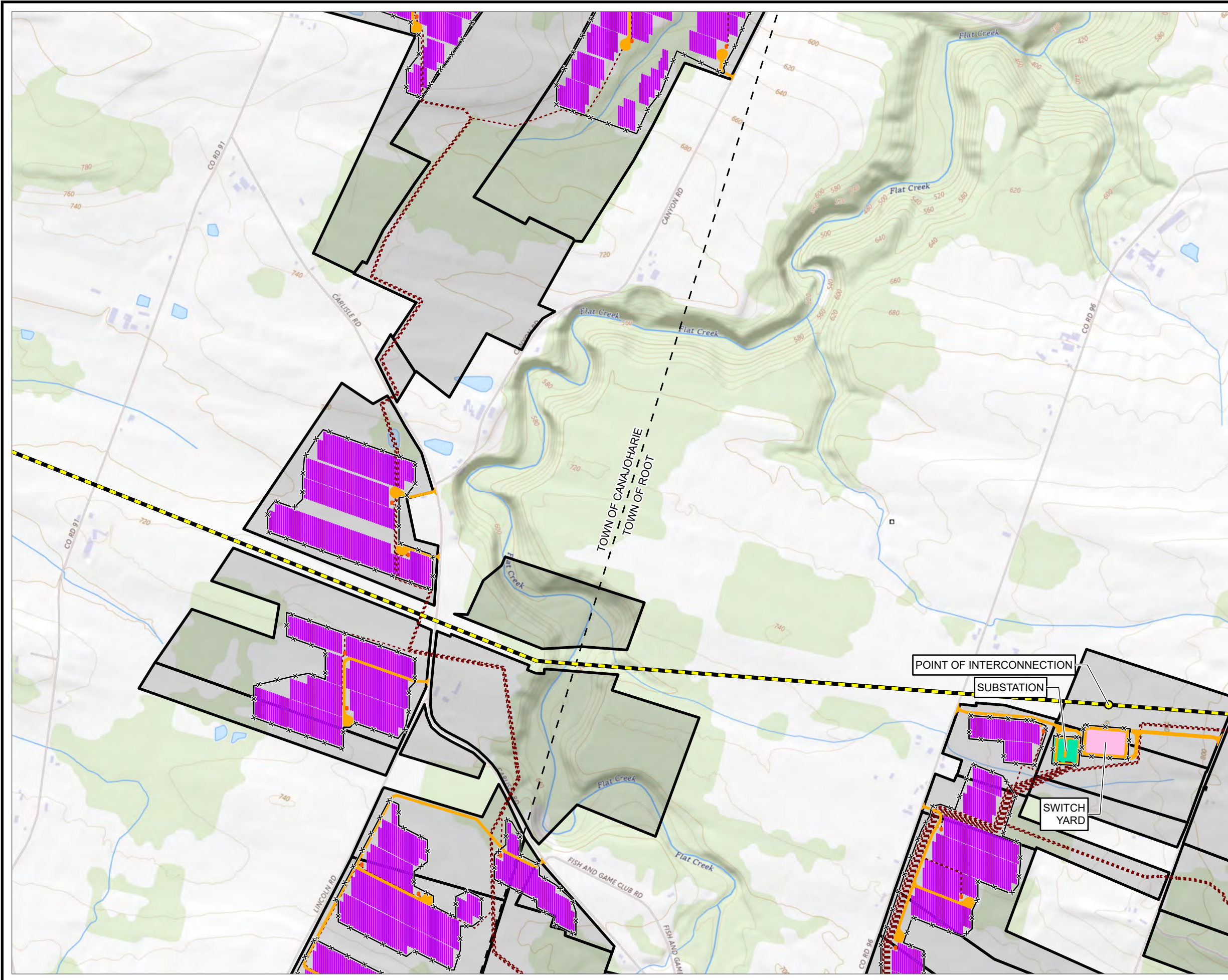
BASE MAP: USGS NATIONAL MAP ONLINE SERVICE LAYER.
 DATA SOURCES: TRC, NYSGIS, SUNEAST.



1:12,000
 1" = 1,000'



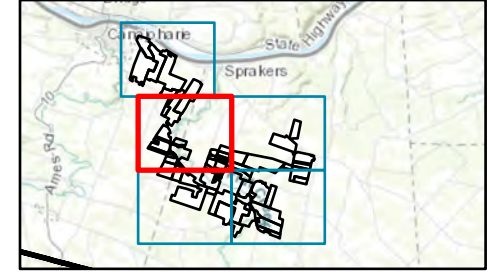
PROJECT:		FLAT CREEK SOLAR TOWNS OF CANAJOHARIE AND ROOT MONTGOMERY COUNTY, NY
TITLE:		
FACILITY COMPONENT LOCATIONS		
DRAWN BY:	R. BARBER	PROJ. NO.: 427281.2022.0000
CHECKED BY:	G. CORYELL	FIGURE 2-2 Sheet 1 of 5
APPROVED BY:	S. KRANES	
DATE:	JULY 2024	



- LEGEND**
- FACILITY SITE
 - PROPOSED POINT OF INTERCONNECTION
 - EXISTING TRANSMISSION LINE
 - PROPOSED COLLECTION ALIGNMENT
 - PROPOSED FENCE LINE
 - PROPOSED ACCESS ROAD
 - PROPOSED PV ARRAY
 - PROPOSED INVERTER
 - PROPOSED SUBSTATION
 - PROPOSED SWITCH YARD
 - TOWN BOUNDARY

NOTES:
 1. THIS FIGURE IS DESIGNED TO BE VIEWED OR PRINTED IN COLOR AT 11X17.

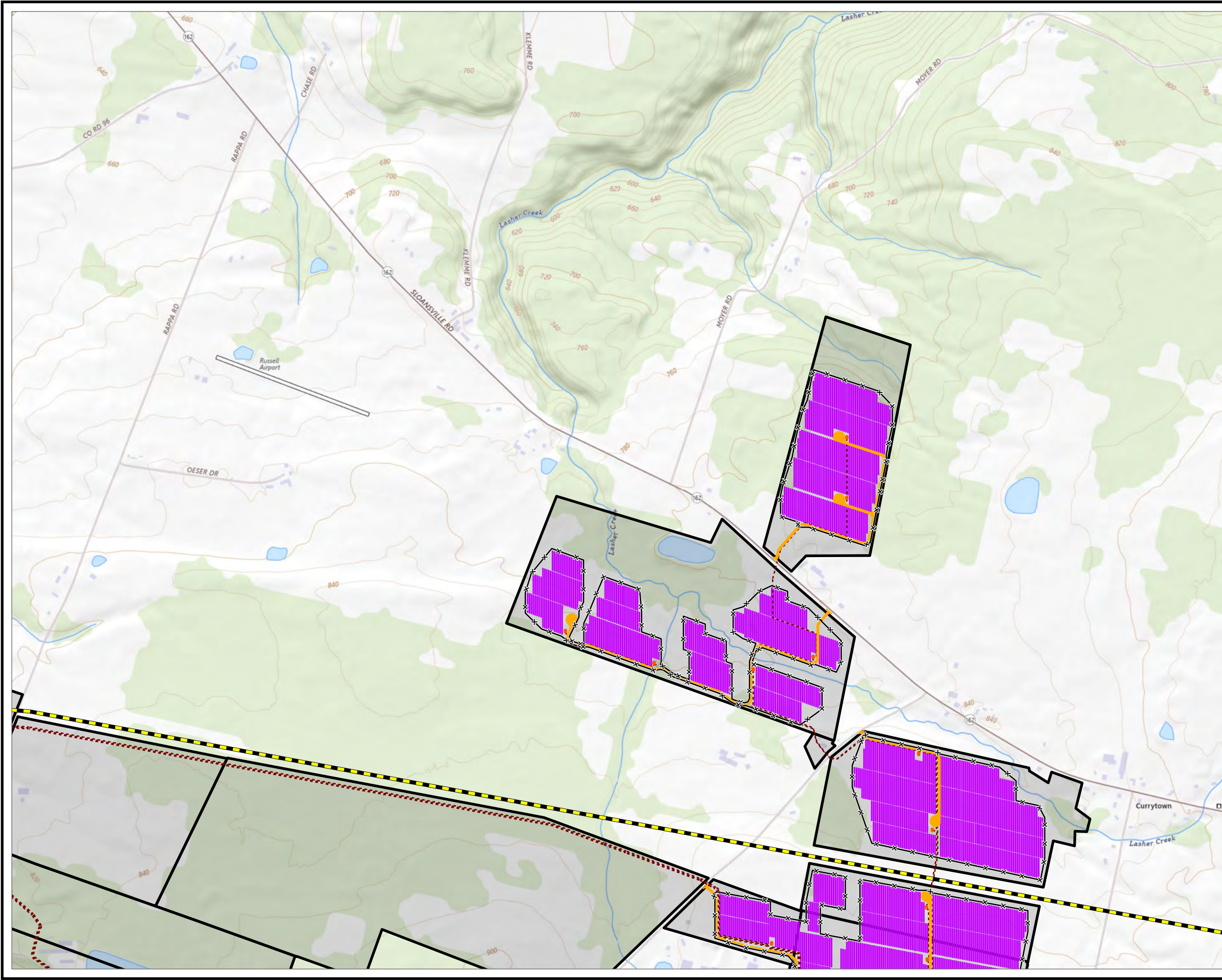
BASE MAP: USGS NATIONAL MAP ONLINE SERVICE LAYER.
 DATA SOURCES: TRC, NYSGIS, SUNEAST.



1:12,000
 1" = 1,000'
 0 1,000 2,000 US FEET

POINT OF INTERCONNECTION
 SUBSTATION
 SWITCH YARD

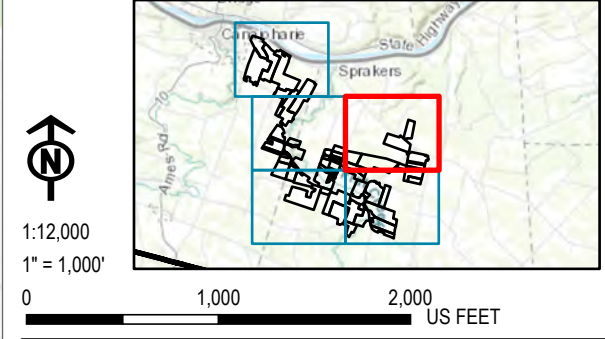
PROJECT:		FLAT CREEK SOLAR TOWNS OF CANAJOHARIE AND ROOT MONTGOMERY COUNTY, NY	
TITLE: FACILITY COMPONENT LOCATIONS			
DRAWN BY:	R. BARBER	PROJ. NO.:	427281.2022.0000
CHECKED BY:	G. CORYELL	FIGURE 2-2 Sheet 2 of 5	
APPROVED BY:	S. KRANES		
DATE:	JULY 2024		



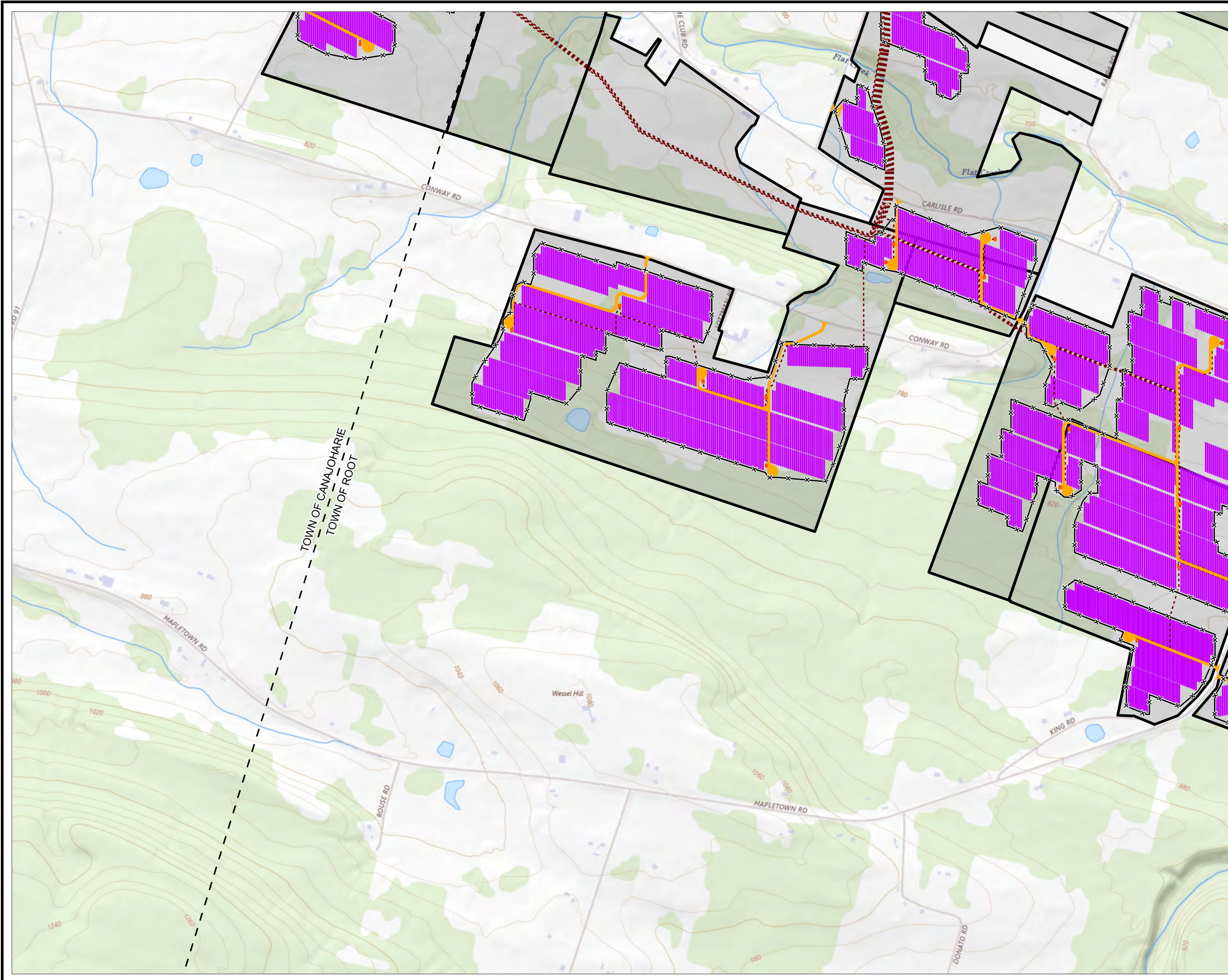
- LEGEND**
- FACILITY SITE
 - EXISTING TRANSMISSION LINE
 - PROPOSED COLLECTION ALIGNMENT
 - PROPOSED FENCE LINE
 - PROPOSED ACCESS ROAD
 - PROPOSED PV ARRAY
 - PROPOSED INVERTER
 - TOWN BOUNDARY

NOTES:
 1. THIS FIGURE IS DESIGNED TO BE VIEWED OR PRINTED IN COLOR AT 11X17.

BASE MAP: USGS NATIONAL MAP ONLINE SERVICE LAYER.
 DATA SOURCES: TRC, NYSGIS, SUNEAST.



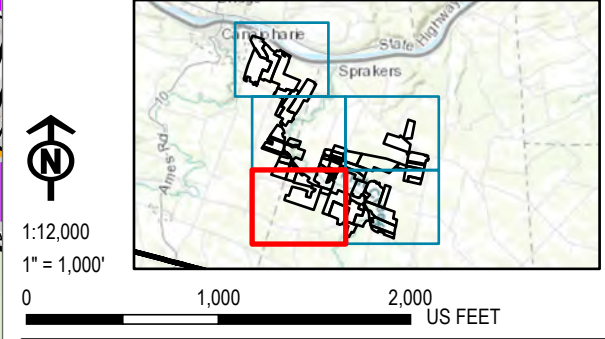
PROJECT:		FLAT CREEK SOLAR TOWNS OF CANAJOHARIE AND ROOT MONTGOMERY COUNTY, NY
TITLE:		FACILITY COMPONENT LOCATIONS
DRAWN BY:	R. BARBER	PROJ. NO.: 427281.2022.0000
CHECKED BY:	G. CORYELL	FIGURE 2-2 Sheet 3 of 5
APPROVED BY:	S. KRANES	
DATE:	JULY 2024	



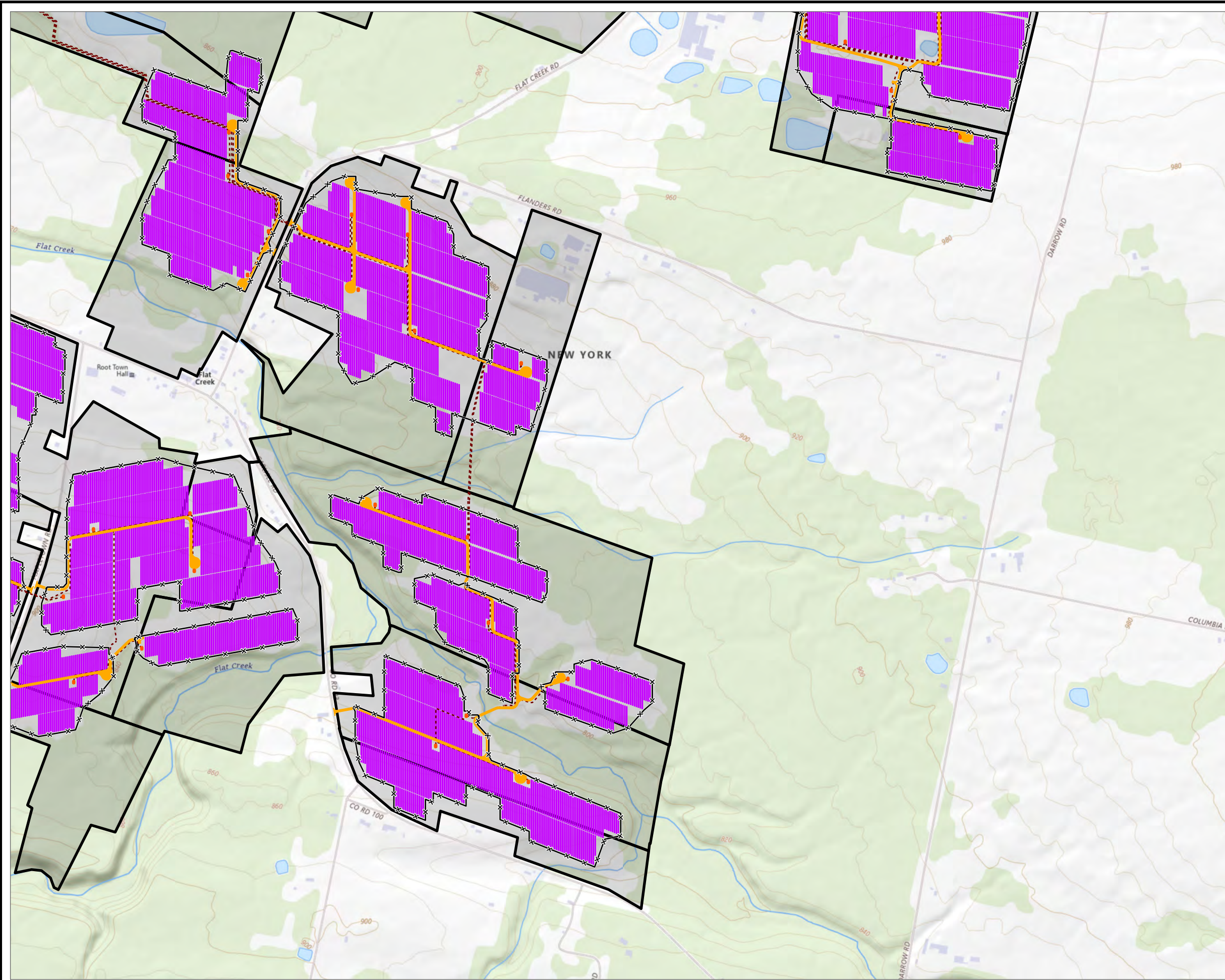
- LEGEND**
- FACILITY SITE
 - PROPOSED COLLECTION ALIGNMENT
 - PROPOSED FENCE LINE
 - PROPOSED ACCESS ROAD
 - PROPOSED PV ARRAY
 - PROPOSED INVERTER
 - TOWN BOUNDARY

NOTES:
 1. THIS FIGURE IS DESIGNED TO BE VIEWED OR PRINTED IN COLOR AT 11X17.

BASE MAP: USGS NATIONAL MAP ONLINE SERVICE LAYER.
 DATA SOURCES: TRC, NYSGIS, SUNEAST.



PROJECT:		FLAT CREEK SOLAR TOWNS OF CANAJOHARIE AND ROOT MONTGOMERY COUNTY, NY	
TITLE:			
FACILITY COMPONENT LOCATIONS			
DRAWN BY:	R. BARBER	PROJ. NO.:	427281.2022.0000
CHECKED BY:	G. CORYELL	FIGURE 2-2 Sheet 4 of 5	
APPROVED BY:	S. KRANES		
DATE:	JULY 2024		

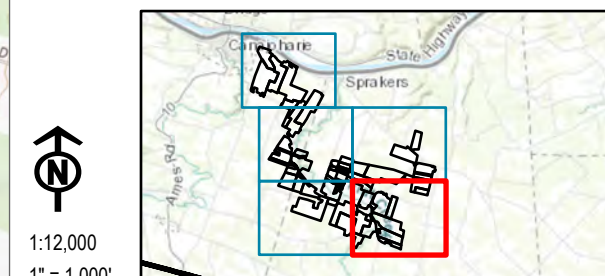


LEGEND

- FACILITY SITE
- PROPOSED COLLECTION ALIGNMENT
- PROPOSED FENCE LINE
- PROPOSED ACCESS ROAD
- PROPOSED PV ARRAY
- PROPOSED INVERTER
- TOWN BOUNDARY

NOTES:
 1. THIS FIGURE IS DESIGNED TO BE VIEWED OR PRINTED IN COLOR AT 11X17.

BASE MAP: USGS NATIONAL MAP ONLINE SERVICE LAYER.
 DATA SOURCES: TRC, NYSGIS, SUNEAST.



1:12,000
 1" = 1,000'



PROJECT:		FLAT CREEK SOLAR TOWNS OF CANAJOHARIE AND ROOT MONTGOMERY COUNTY, NY
TITLE:		FACILITY COMPONENT LOCATIONS
DRAWN BY:	R. BARBER	PROJ. NO.: 427281.2022.0000
CHECKED BY:	G. CORYELL	FIGURE 2-2 Sheet 5 of 5
APPROVED BY:	S. KRANES	
DATE:	JULY 2024	