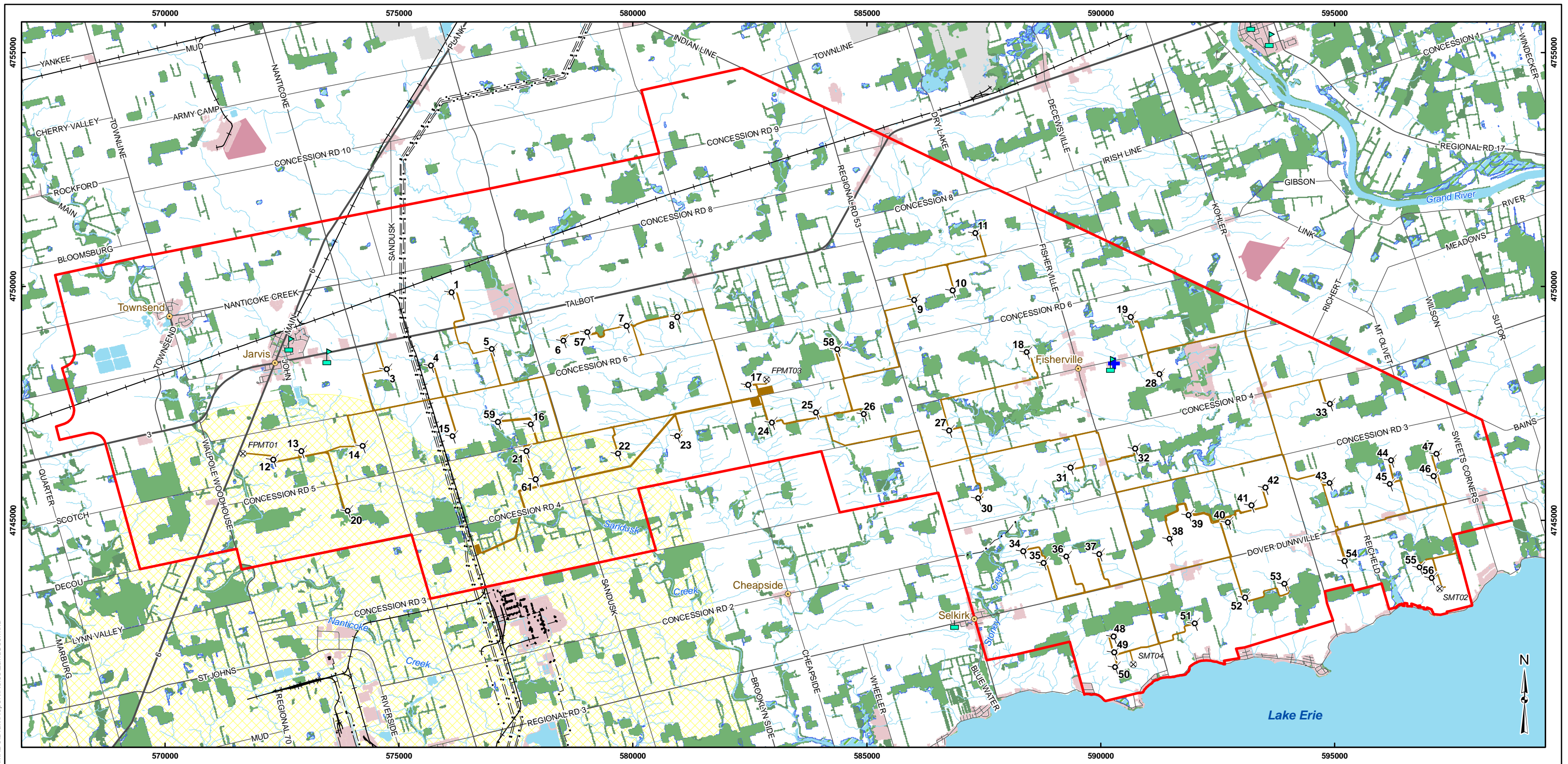




APPENDIX A

Project Area Land Use

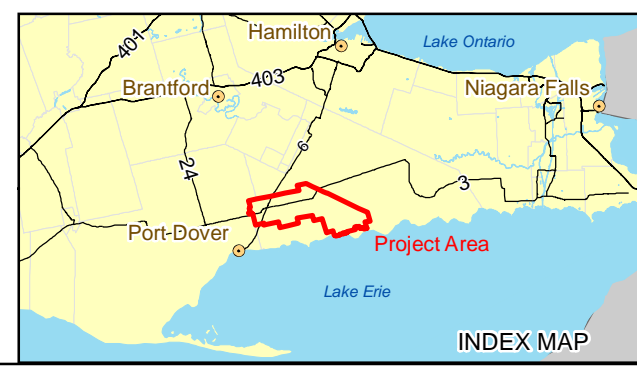
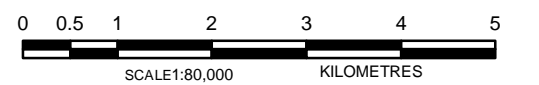


G:\Projects\2010\10-1151-0035_NextEraNaticoke\Wind\GIS\MXD\Draft\Report\Noise\LandUse.mxd

LEGEND	
	Turbine
	School
	Health Care Facility
	Meteorological Tower
	Watercourse
	Hydro One Transmission Line
	Highway
	Major Road
	Local Road
	Railway
	Project Location
	Project Area
	Haldimand County Industrial Influence Area
Land Use (SOLRIS / NRVIS)	
	Natural Area
	Forest
	Pit \ Quarry
	Urban \ Industrial
	Wetland
	Water
	Agriculture
	Airport

REFERENCE
 Base Data - MNR NRVIS, obtained 2004, CANMAP v2008.4
 Land Use - SOLRIS, 2000
 Produced by Golder Associates Ltd under licence from Ontario Ministry of Natural Resources, © Queens Printer 2010
 Projection: UTM Datum: NAD 83 Coordinate System: UTM Zone 17

NOTES:
 1. All Project Location includes disturbance area
 2. Turbines 2, 29 and 60 do not exist
 3. Turbine 62 is a Siemens SWT-2.221-93 Low Noise wind turbine. All other turbines are Siemens SWT-2.221-101 Low Noise wind turbines.



PROJECT	Summerhaven Wind Energy Centre		
TITLE	PROJECT AREA LAND USE		
 Golder Associates Mississauga, Ontario	PROJECT NO. 10-1151-0035	SCALE AS SHOWN	REV.
	DESIGN JR 27 Aug. 2010	FIGURE: X A	
	GIS BC 3 Aug. 2011		
	CHECK PP 3 Aug. 2011		
REVIEW JW 3 Aug. 2011			