

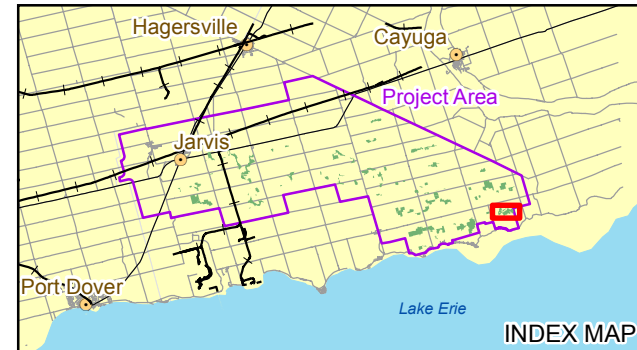



LEGEND

- | | | |
|--------------------------------|-------------------------------|---|
| Project Location | Transmission Line | Golden Data |
| ⊙ Turbine and Number | — Transmission Line | ▭ ELC Boundary |
| ⊗ Meteorological Tower | ▭ Project Area | ▨ Significant Habitat of Species of Conservation Concern – Chimney Crayfish |
| — Overhead Cable | Base Data | ▨ Candidate Habitat of Species of Conservation Concern – Chimney Crayfish |
| — Underground Cable – Trenched | — Road | |
| — Underground Cable – Bored | — Railway | |
| | — Hydro One Transmission Line | |
| | ▭ Water | |

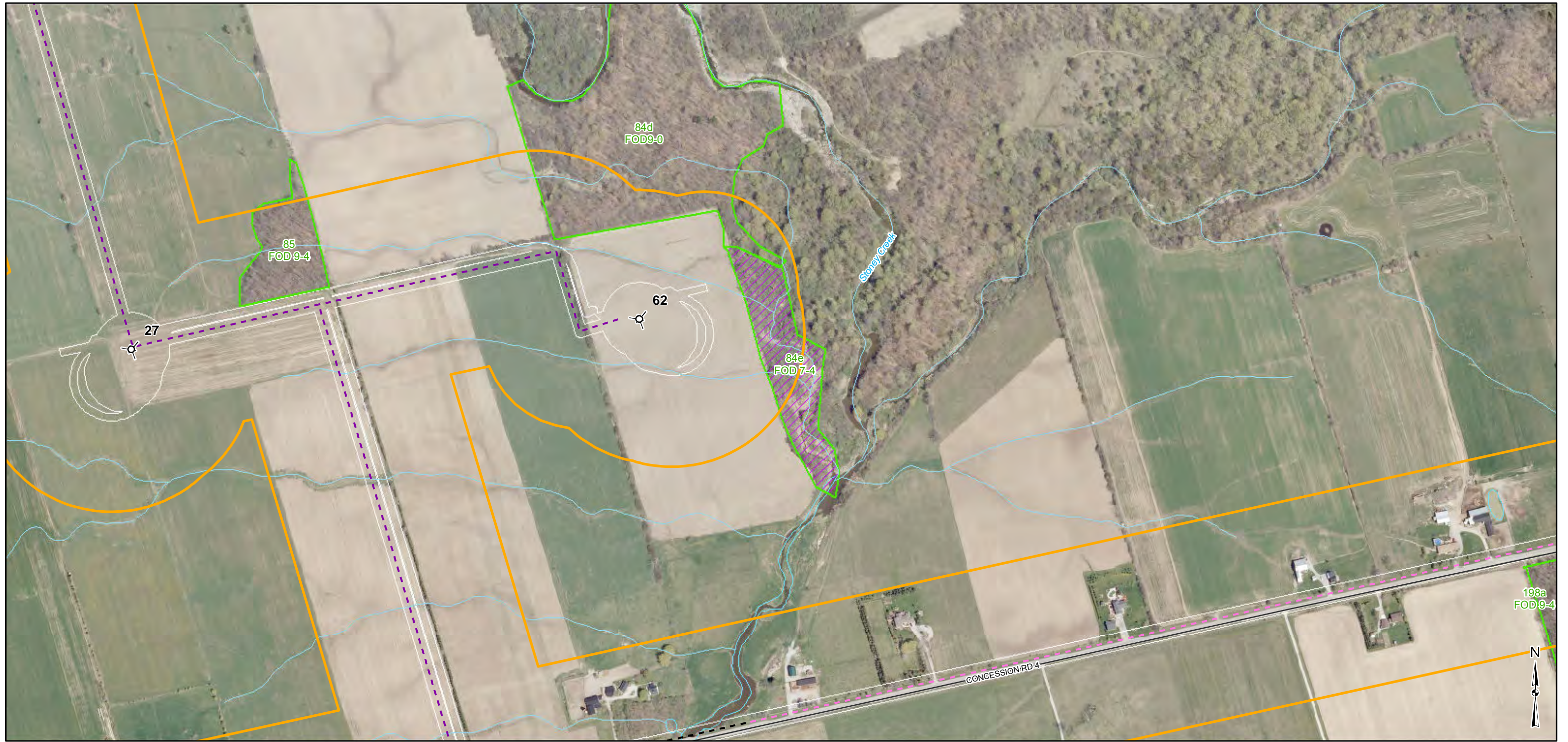
REFERENCE

Base Data - MNR NRVIS, obtained 2004, CANMAP v2008.4
 Produced by Golder Associates Ltd under licence from Ontario Ministry of Natural Resources, © Queens Printer 2010
 Projection: UTM Datum: NAD 83 Coordinate System: UTM Zone 17



PROJECT		Summerhaven Wind Energy Centre	
TITLE		SITE INVESTIGATION OF HABITAT OF SPECIES OF CONSERVATION CONCERN - CHIMNEY CRAYFISH	
PROJECT NO.	10-1151-0035	SCALE AS SHOWN	REV.
DESIGN	JR 27 Aug. 2010		FIGURE: 4-4a
GIS	PPI/JB 17 May. 2011		
CHECK	DM 17 May. 2011		
REVIEW			

G:\Projects\2010\10-1151-0035_NextEraNaticoke\Wind\GIS\MXDs\Draft\Report\NaturalHeritage\EOS\Fig_4a_HabitatOfSpeciesOfConservationConcern.mxd



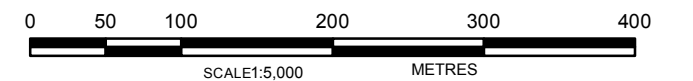
LEGEND

- Project Location**
- Turbine and Number
 - Meteorological Tower
 - Overhead Cable
 - Underground Cable – Trenched
 - Underground Cable – Bored
- Base Data**
- Transmission Line
 - Project Area
 - Road
 - Railway
 - Hydro One Transmission Line
 - Water

- Golder Data**
- ELC Boundary
 - Significant Rare Vegetation
 - Candidate Rare Vegetation

REFERENCE

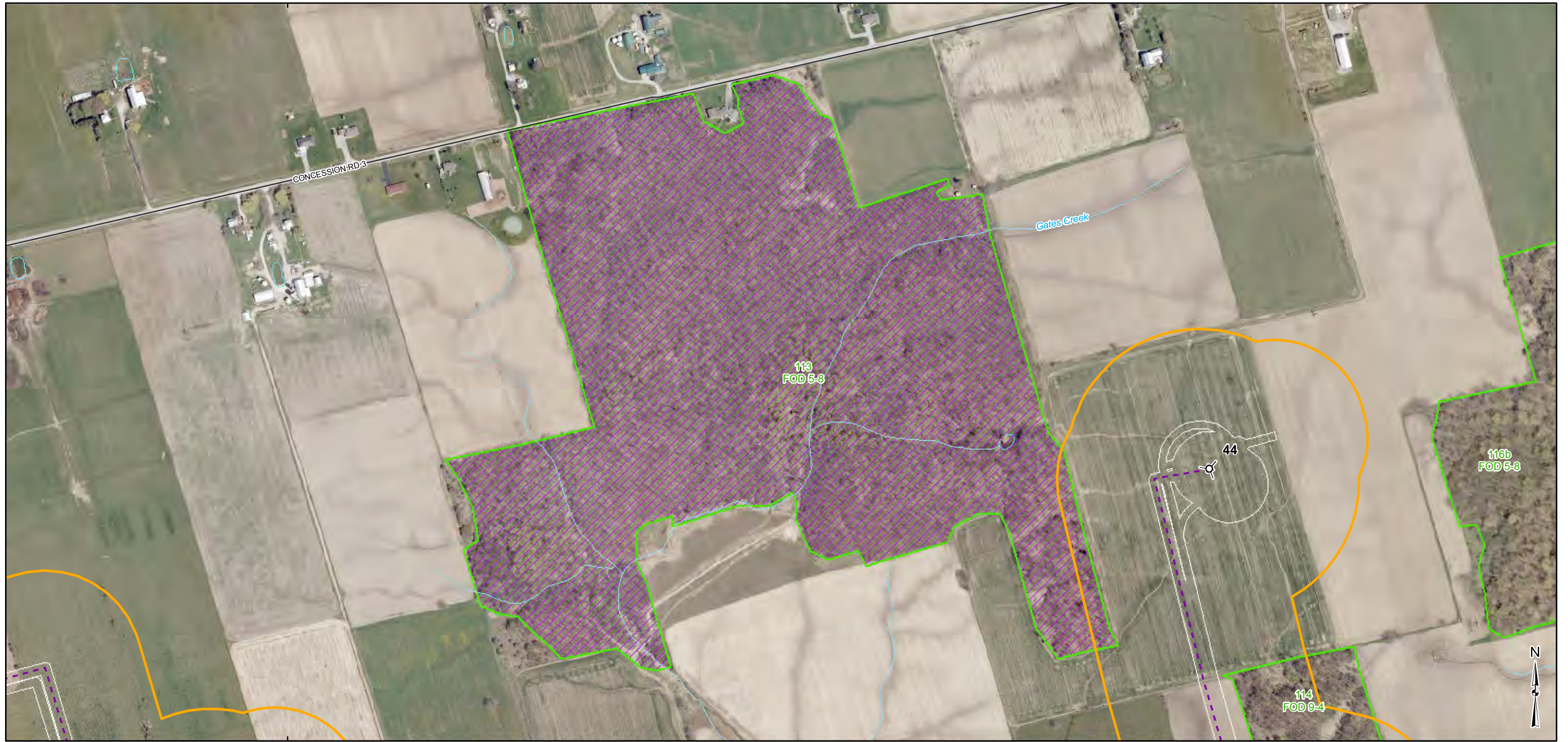
Base Data - MNR NRVIS, obtained 2004, CANMAP v2008.4
 Produced by Golder Associates Ltd under licence from Ontario Ministry of Natural Resources, © Queens Printer 2010
 Projection: UTM Datum: NAD 83 Coordinate System: UTM Zone 17



PROJECT	Summerhaven Wind Energy Centre			
TITLE	SITE INVESTIGATION OF RARE VEGETATION			
 Mississauga, Ontario	PROJECT NO.	10-1151-0035	SCALE AS SHOWN	REV.
	DESIGN	JR	27 Aug. 2010	FIGURE: 4-5a
	GIS	PP/JB	17 May. 2011	
	CHECK	DM	17 May. 2011	
REVIEW				

G:\Projects\2010\10-1151-0035_NextEraNaticoke\Wind\GIS\MXDs\Draft\Report\NaturalHeritage\EOS\Fig4_5a_RareVegetation.mxd

595000



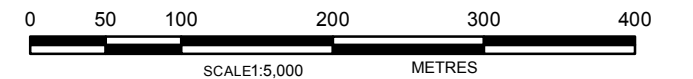
595000

LEGEND

- | | | |
|------------------------------|-----------------------------|---|
| Project Location | Transmission Line | Golder Data |
| Turbine and Number | Project Area | ELC Boundary |
| Meteorological Tower | Base Data | Significant Sites Supporting Area Sensitive Species |
| Overhead Cable | Road | Candidate Sites Supporting Area Sensitive Species |
| Underground Cable – Trenched | Railway | |
| Underground Cable – Bored | Hydro One Transmission Line | |
| | Water | |

REFERENCE

Base Data - MNR NRVIS, obtained 2004, CANMAP v2008.4
 Produced by Golder Associates Ltd under licence from Ontario Ministry of Natural Resources, © Queens Printer 2010
 Projection: UTM Datum: NAD 83 Coordinate System: UTM Zone 17



PROJECT	Summerhaven Wind Energy Centre			
TITLE	SITE INVESTIGATION OF SITES SUPPORTING AREA SENSITIVE SPECIES			
 Golder Associates Mississauga, Ontario	PROJECT NO.	10-1151-0035	SCALE AS SHOWN	REV.
	DESIGN	JR	27 Aug. 2010	FIGURE: 4-6a
	GIS	PP/JB	17 May, 2011	
	CHECK	DM	17 May, 2011	
REVIEW				

G:\Projects\2010\10-1151-0035_NextEraNaticokeWind\GIS\MapDocs\DraftReport\NaturalHeritage\EOS\Fig4_6a_SitesSupportingAreaSensitiveSpecies.mxd

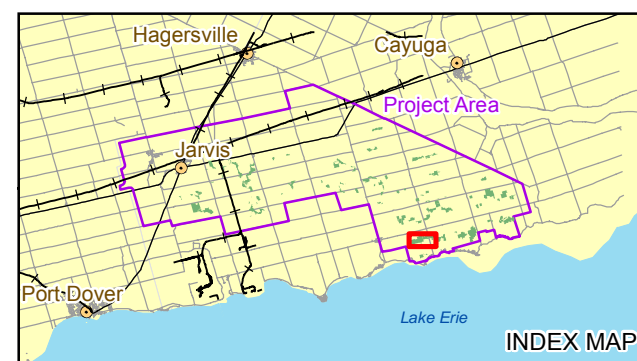



LEGEND

Project Location	Transmission Line	Golden Data
⊗ Turbine and Number	— Transmission Line	▭ ELC Boundary
⊗ Meteorological Tower	▭ Project Area	▨ Significant Sites Supporting Area Sensitive Species
— Overhead Cable	— Road	▨ Candidate Sites Supporting Area Sensitive Species
— Underground Cable – Trenched	— Railway	
— Underground Cable – Bored	— Hydro One Transmission Line	
	▭ Water	

REFERENCE

Base Data - MNR NRVIS, obtained 2004, CANMAP v2008.4
 Produced by Golder Associates Ltd under licence from Ontario Ministry of Natural Resources, © Queens Printer 2010
 Projection: UTM Datum: NAD 83 Coordinate System: UTM Zone 17



PROJECT	Summerhaven Wind Energy Centre			
TITLE	SITE INVESTIGATION OF SITES SUPPORTING AREA SENSITIVE SPECIES			
 Golder Associates Mississauga, Ontario	PROJECT NO. 10-1151-0035	SCALE AS SHOWN	REV.	FIGURE: 4-6b
	DESIGN JR 27 Aug. 2010			
	GIS PPI/JB 17 May, 2011			
	CHECK DM 17 May, 2011			

G:\Projects\2010\10-1151-0035_NextEraNaticokeWind\GIS\MapDocs\Draft\Report\NaturalHeritage\EOS\Fig4_6b_SitesSupportingAreaSensitiveSpecies.mxd

595000



595000

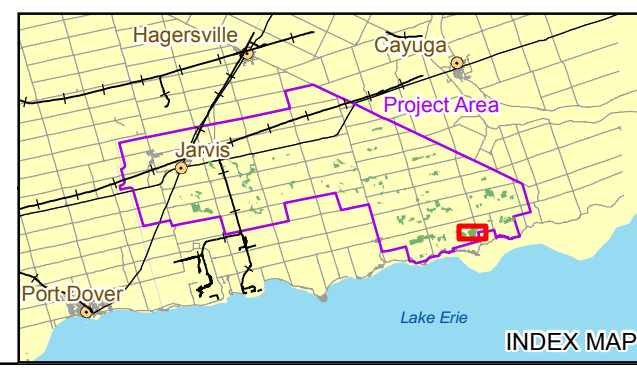


LEGEND

Project Location	Transmission Line	Golder Data
⊗ Turbine and Number	— Road	▭ ELC Boundary
⊗ Meteorological Tower	— Railway	▨ Significant Sites Supporting Area Sensitive Species
— Overhead Cable	— Hydro One Transmission Line	▨ Candidate Sites Supporting Area Sensitive Species
— Underground Cable – Trenched	□ Water	
— Underground Cable – Bored		

REFERENCE

Base Data - MNR NRVIS, obtained 2004, CANMAP v2008.4
 Produced by Golder Associates Ltd under licence from Ontario Ministry of Natural Resources, © Queens Printer 2010
 Projection: UTM Datum: NAD 83 Coordinate System: UTM Zone 17



PROJECT	Summerhaven Wind Energy Centre			
TITLE	SITE INVESTIGATION OF SITES SUPPORTING AREA SENSITIVE SPECIES			
	PROJECT NO. 10-1151-0035	SCALE AS SHOWN	REV.	
DESIGN	JR 27 Aug. 2010			
GIS	PP/JB 17 May. 2011			
CHECK	DM 17 May. 2011			
REVIEW				

Golder Associates
Mississauga, Ontario

FIGURE: 4-6c

G:\Projects\2010\10-1151-0035_NextEraNaticoke\Wind\GIS\MXDs\Draft\Report\NaturalHeritage\EOS\Fig4_6c_SitesSupportingAreaSensitiveSpecies.mxd

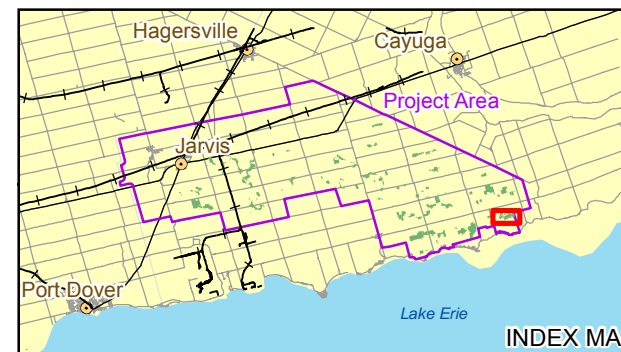


LEGEND

- | | | |
|------------------------------|-----------------------------|---|
| Project Location | Transmission Line | Golder Data |
| Turbine and Number | Project Area | ELC Boundary |
| Meteorological Tower | Base Data | Significant Sites Supporting Area Sensitive Species |
| Overhead Cable | Road | Candidate Sites Supporting Area Sensitive Species |
| Underground Cable – Trenched | Railway | |
| Underground Cable – Bored | Hydro One Transmission Line | |
| | Water | |

REFERENCE

Base Data - MNR NRVIS, obtained 2004, CANMAP v2008.4
 Produced by Golder Associates Ltd under licence from Ontario Ministry of Natural Resources, © Queens Printer 2010
 Projection: UTM Datum: NAD 83 Coordinate System: UTM Zone 17



PROJECT	Summerhaven Wind Energy Centre			
TITLE	SITE INVESTIGATION OF SITES SUPPORTING AREA SENSITIVE SPECIES			
 Golder Associates Mississauga, Ontario	PROJECT NO.	10-1151-0035	SCALE AS SHOWN	REV.
	DESIGN	JR 27 Aug. 2010	FIGURE: 4-6d	
	GIS	PP/JB 17 May. 2011		
	CHECK	DM 17 May. 2011		
REVIEW				

G:\Projects\2010\10-1151-0035_NextEraNaticokeWind\GIS\MapDocs\Draft\Report\NaturalHeritage\EOS\Fig4_6d_SitesSupportingAreaSensitiveSpecies.mxd

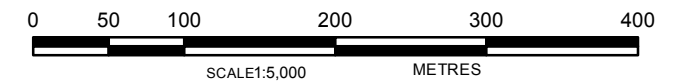


LEGEND

- | | | |
|--|--|---|
| Project Location | Base Data | Golder Data |
| <ul style="list-style-type: none"> Turbine and Number Meteorological Tower Overhead Cable Underground Cable – Trenched Underground Cable – Bored | <ul style="list-style-type: none"> Transmission Line Project Area Road Railway Hydro One Transmission Line Water | <ul style="list-style-type: none"> ELC Boundary Significant Sites Supporting Area Sensitive Species Candidate Sites Supporting Area Sensitive Species |

REFERENCE

Base Data - MNR NRVIS, obtained 2004, CANMAP v2008.4
 Produced by Golder Associates Ltd under licence from Ontario Ministry of Natural Resources, © Queens Printer 2010
 Projection: UTM Datum: NAD 83 Coordinate System: UTM Zone 17



PROJECT	Summerhaven Wind Energy Centre			
TITLE	SITE INVESTIGATION OF SITES SUPPORTING AREA SENSITIVE SPECIES			
 Golder Associates Mississauga, Ontario	PROJECT NO. 10-1151-0035	SCALE AS SHOWN	REV.	FIGURE: 4-6e
	DESIGN JR 27 Aug. 2010			
	GIS PP/JB 17 May. 2011			
	CHECK DM 17 May. 2011			

G:\Projects\2010\10-1151-0035_NextEraNaticokeWind\GIS\MapDocs\DraftReport\NaturalHeritage\EOS\Fig4_6e_SitesSupportingAreaSensitiveSpecies.mxd

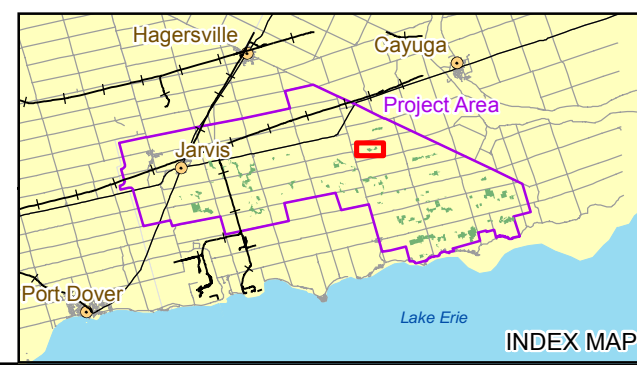


LEGEND

- | | | |
|---|--|---|
| <p>Project Location</p> <ul style="list-style-type: none"> Turbine and Number Meteorological Tower Overhead Cable Underground Cable – Trenched Underground Cable – Bored | <p>Base Data</p> <ul style="list-style-type: none"> Transmission Line Project Area Road Railway Hydro One Transmission Line Water | <p>Golden Data</p> <ul style="list-style-type: none"> ELC Boundary Significant Sites of Woodlands Supporting Amphibian Breeding Ponds Candidate Sites of Woodlands Supporting Amphibian Breeding Ponds |
|---|--|---|

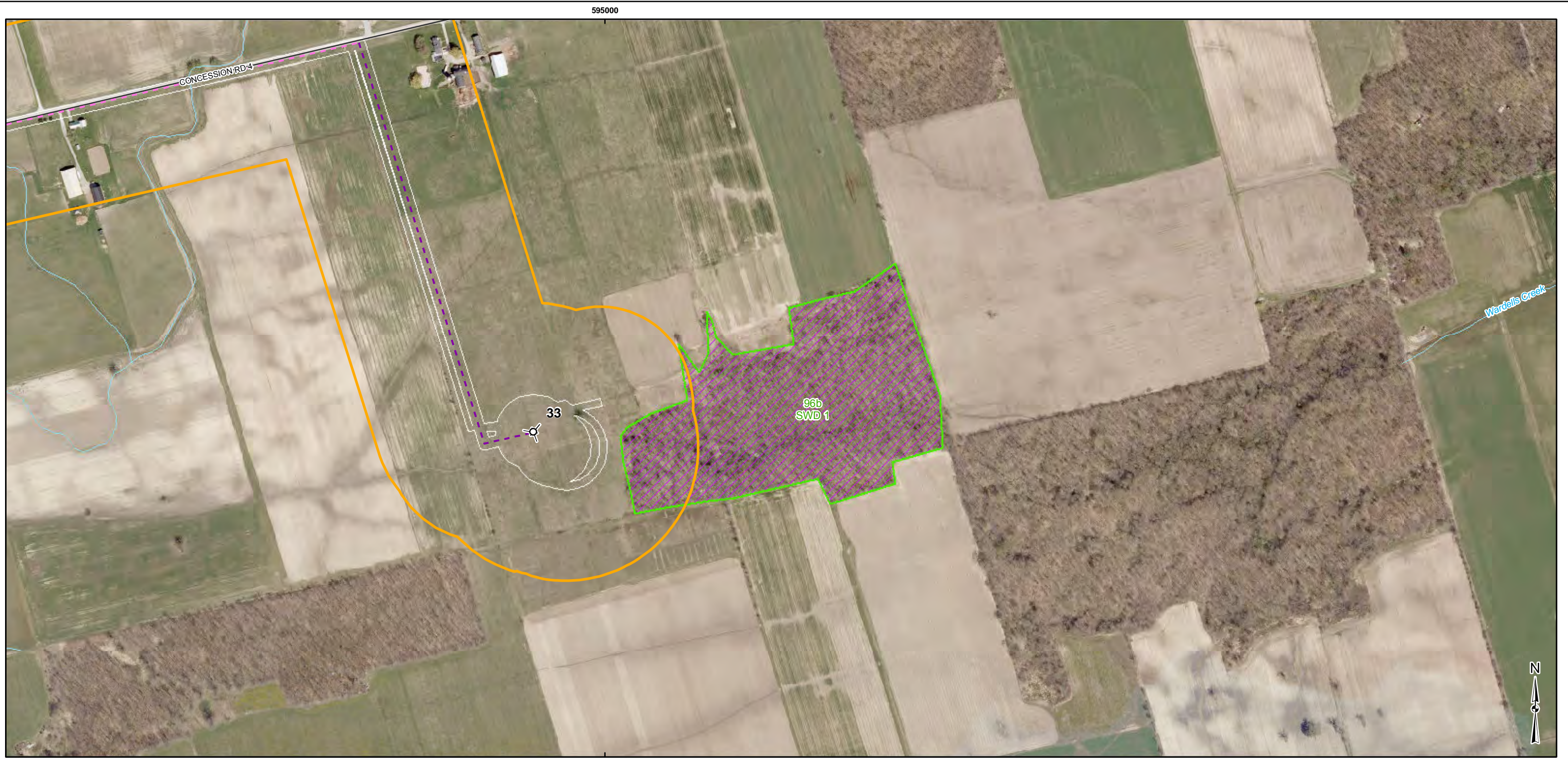
REFERENCE

Base Data - MNR NRVIS, obtained 2004, CANMAP v2008.4
 Produced by Golder Associates Ltd under licence from Ontario Ministry of Natural Resources, © Queens Printer 2010
 Projection: UTM Datum: NAD 83 Coordinate System: UTM Zone 17



PROJECT		Summerhaven Wind Energy Centre	
TITLE		SITE INVESTIGATION OF WOODLANDS SUPPORTING AMPHIBIAN BREEDING PONDS	
Golder Associates Mississauga, Ontario		PROJECT NO. 10-1151-0035 DESIGN JR 27 Aug. 2010 GIS PPI/JB 17 May. 2011 CHECK DM 17 May. 2011 REVIEW	SCALE AS SHOWN REV. FIGURE: 4-7a

G:\Projects\2010\10-1151-0035_NextEraNaticokeWind\GIS\MapDocs\Draft\Report\NaturalHeritage\EOS\Fig4_7a_WoodlandsSupportingAmphibianBreedingPonds.mxd

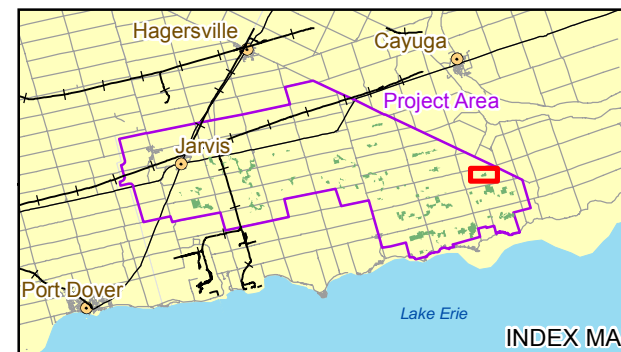
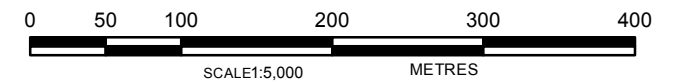


LEGEND

- | | | |
|------------------------------|-----------------------------|--|
| Project Location | Transmission Line | Golder Data |
| Turbine and Number | Project Area | ELC Boundary |
| Meteorological Tower | Base Data | Significant Sites of Woodlands Supporting Amphibian Breeding Ponds |
| Overhead Cable | Road | Candidate Sites of Woodlands Supporting Amphibian Breeding Ponds |
| Underground Cable – Trenched | Railway | |
| Underground Cable – Bored | Hydro One Transmission Line | |
| | Water | |

REFERENCE

Base Data - MNR NRVIS, obtained 2004, CANMAP v2008.4
 Produced by Golder Associates Ltd under licence from Ontario Ministry of Natural Resources, © Queens Printer 2010
 Projection: UTM Datum: NAD 83 Coordinate System: UTM Zone 17



PROJECT	Summerhaven Wind Energy Centre			
TITLE	SITE INVESTIGATION OF WOODLANDS SUPPORTING AMPHIBIAN BREEDING PONDS			
	PROJECT NO. 10-1151-0035	SCALE AS SHOWN	REV.	
DESIGN	JR 27 Aug. 2010			
GIS	PP/JB 17 May. 2011			
CHECK	DM 17 May. 2011			
REVIEW				

FIGURE: 4-7b



G:\Projects\2010\10-1151-0035_NextEraNaticokeWind\GIS\MapDocs\Draft\Report\NaturalHeritage\EOS\Fig4_7b_WoodlandsSupportingAmphibianBreedingPonds.mxd

G:\Projects\2010\10-1151-0035_NextEraNaticokeWind\GIS\MapDocs\DraftReport\NaturalHeritage\EOS\Fig4_8a_AreasofHighDiversity.mxd

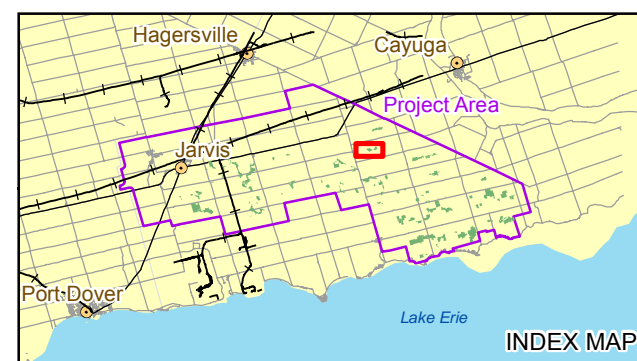
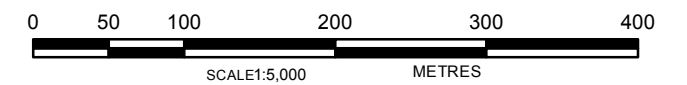



LEGEND

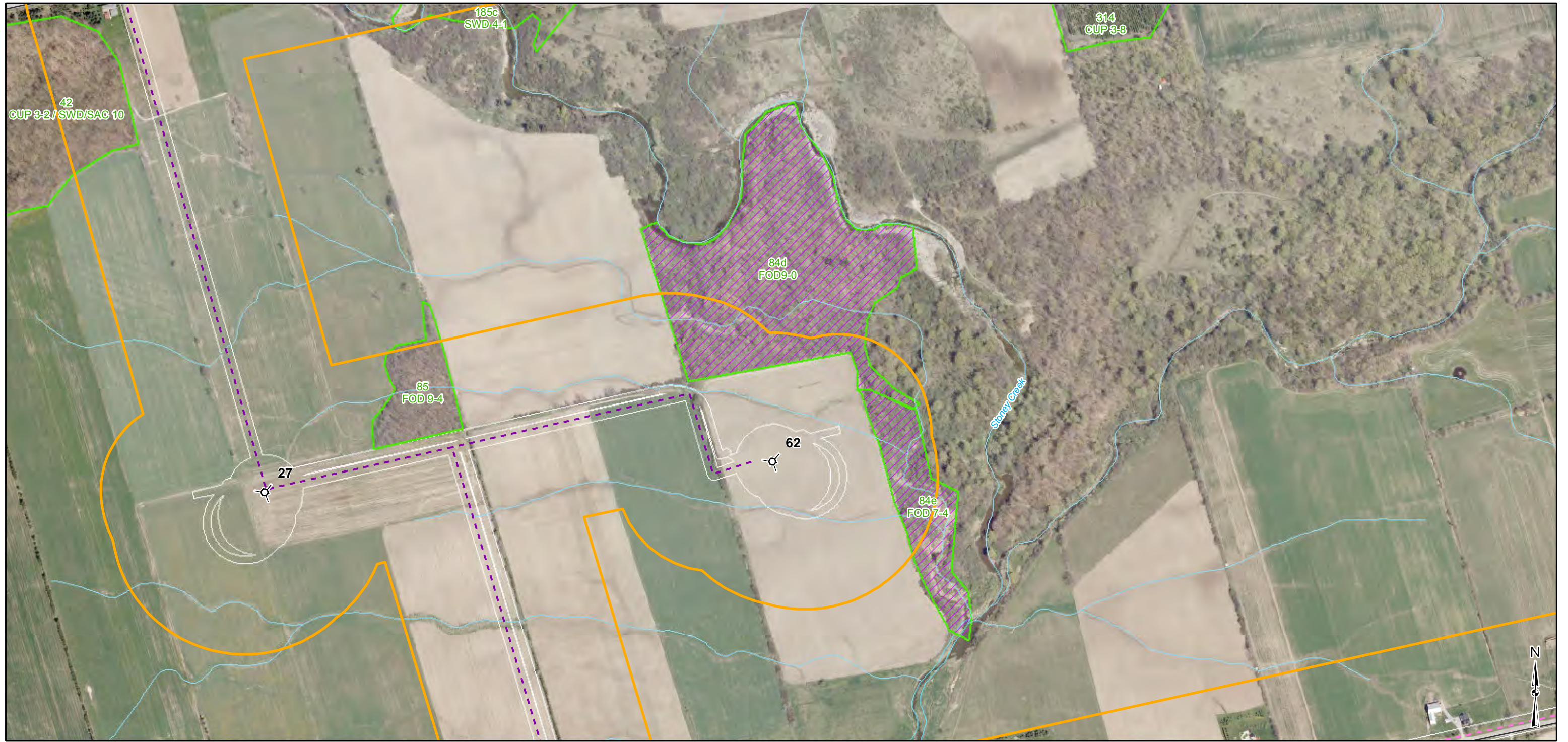
Project Location	Transmission Line	Golden Data
⊗ Turbine and Number	— Transmission Line	□ ELC Boundary
⊗ Meteorological Tower	□ Project Area	▨ Significant Sites of Areas of High Diversity
— Overhead Cable	— Road	▨ Candidate Sites of Areas of High Diversity
— Underground Cable – Trenched	— Railway	
— Underground Cable – Bored	— Hydro One Transmission Line	
	□ Water	

REFERENCE

Base Data - MNR NRVIS, obtained 2004, CANMAP v2008.4
 Produced by Golder Associates Ltd under licence from Ontario Ministry of Natural Resources, © Queens Printer 2010
 Projection: UTM Datum: NAD 83 Coordinate System: UTM Zone 17



PROJECT	Summerhaven Wind Energy Centre		
TITLE	SITE INVESTIGATION OF AREAS OF HIGH DIVERSITY		
 Golder Associates Mississauga, Ontario	PROJECT NO. 10-1151-0035	SCALE AS SHOWN	REV.
	DESIGN JR 27 Aug. 2010	FIGURE: 4-8a	
	GIS PPI/JB 17 May. 2011		
	CHECK DM 17 May. 2011		
	REVIEW		



LEGEND

- | | | |
|--------------------------------|-------------------------------|--|
| Project Location | Transmission Line | Golder Data |
| ⊗ Turbine and Number | — Transmission Line | ▭ ELC Boundary |
| ⊗ Meteorological Tower | ▭ Project Area | ▨ Significant Sites of Areas of High Diversity |
| — Overhead Cable | — Road | ▨ Candidate Sites of Areas of High Diversity |
| — Underground Cable – Trenched | — Railway | |
| — Underground Cable – Bored | — Hydro One Transmission Line | |
| | ▭ Water | |

REFERENCE

Base Data - MNR NRVIS, obtained 2004, CANMAP v2008.4
 Produced by Golder Associates Ltd under licence from Ontario Ministry of Natural Resources, © Queens Printer 2010
 Projection: UTM Datum: NAD 83 Coordinate System: UTM Zone 17



PROJECT	Summerhaven Wind Energy Centre		
TITLE	SITE INVESTIGATION OF AREAS OF HIGH DIVERSITY		
	PROJECT NO. 10-1151-0035	SCALE AS SHOWN	REV.
DESIGN	JR 27 Aug. 2010		
GIS	PP/JB 17 May. 2011		
CHECK	DM 17 May. 2011		
REVIEW			



FIGURE: 4-8b

G:\Projects\2010\10-1151-0035_NextEraNaticoke\Wind\GIS\MapDocs\DraftReport\NaturalHeritage\EOS\Fig4_8b_AreasofHighDiversity.mxd

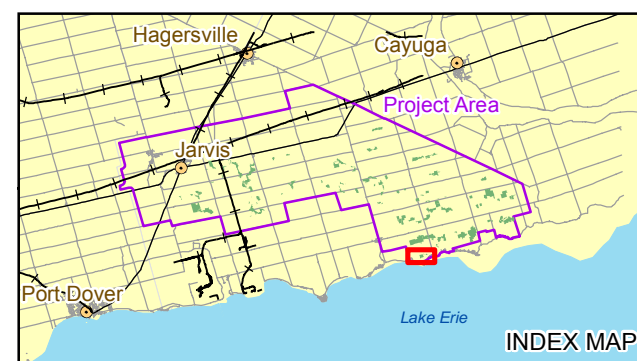


LEGEND

Project Location	Transmission Line	Golder Data
⊗ Turbine and Number	— Transmission Line	▭ ELC Boundary
⊗ Meteorological Tower	▭ Project Area	▨ Significant Sites of Areas of High Diversity
— Overhead Cable	— Road	▨ Candidate Sites of Areas of High Diversity
— Underground Cable – Trenched	— Railway	
— Underground Cable – Bored	— Hydro One Transmission Line	
	▭ Water	

REFERENCE

Base Data - MNR NRVIS, obtained 2004, CANMAP v2008.4
 Produced by Golder Associates Ltd under licence from Ontario Ministry of Natural Resources, © Queens Printer 2010
 Projection: UTM Datum: NAD 83 Coordinate System: UTM Zone 17



PROJECT	Summerhaven Wind Energy Centre		
TITLE	SITE INVESTIGATION OF AREAS OF HIGH DIVERSITY		
	PROJECT NO. 10-1151-0035	SCALE AS SHOWN	REV.
	DESIGN JR 27 Aug. 2010		
	GIS PPI/JB 17 May. 2011		
	CHECK DM 17 May. 2011		
	REVIEW		

Golder Associates
Mississauga, Ontario

FIGURE: 4-8c

G:\Projects\2010\10-1151-0035_NextEraNaticoke\Wind\GIS\MapDocs\Draft\Report\NaturalHeritage\EOS\Fig4_8c_AreasofHighDiversity.mxd

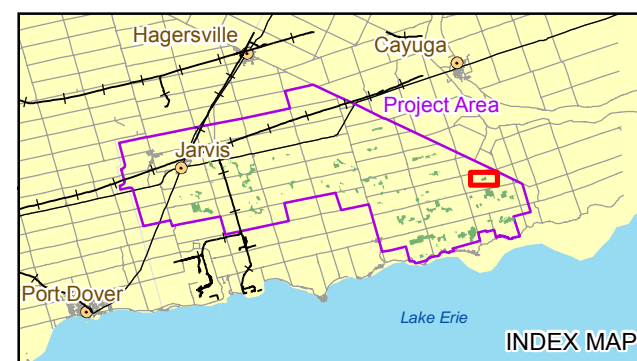


LEGEND

Project Location	Base Data	Golder Data
<ul style="list-style-type: none"> Turbine and Number Meteorological Tower Overhead Cable Underground Cable – Trenched Underground Cable – Bored 	<ul style="list-style-type: none"> Transmission Line Project Area Road Railway Hydro One Transmission Line Water 	<ul style="list-style-type: none"> ELC Boundary Significant Sites of Areas of High Diversity Candidate Sites of Areas of High Diversity

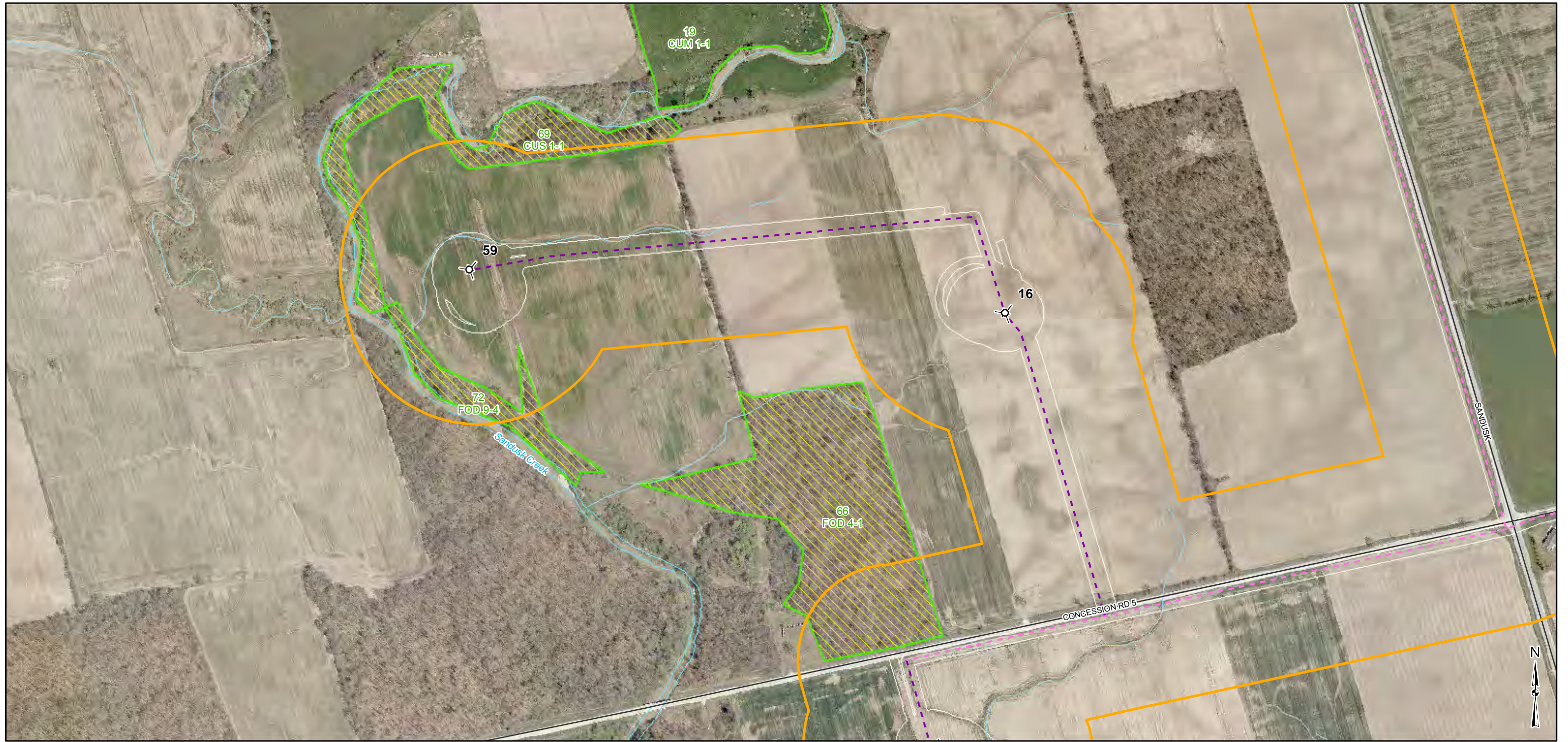
REFERENCE

Base Data - MNR NRVIS, obtained 2004, CANMAP v2008.4
 Produced by Golder Associates Ltd under licence from Ontario Ministry of Natural Resources, © Queens Printer 2010
 Projection: UTM Datum: NAD 83 Coordinate System: UTM Zone 17



PROJECT	Summerhaven Wind Energy Centre			
TITLE	SITE INVESTIGATION OF AREAS OF HIGH DIVERSITY			
 Mississauga, Ontario	PROJECT NO.	10-1151-0035	SCALE AS SHOWN	REV.
	DESIGN	JR	27 Aug. 2010	FIGURE: 4-8d
	GIS	PP/JB	17 May, 2011	
	CHECK	DM	17 May, 2011	
	REVIEW			

G:\Projects\2010\10-1151-0035_NextEraNaticokeWind\GIS\MXDs\Draft\Report\NaturalHeritage\EOS\Fig4_8d_AreasofHighDiversity.mxd



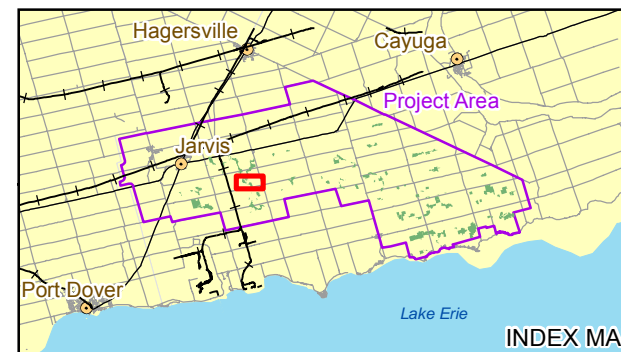
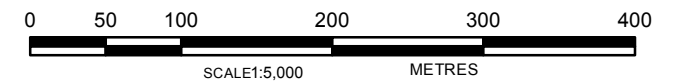
LEGEND

- Project Location**
- Turbine and Number
 - Meteorological Tower
 - Overhead Cable
 - Underground Cable – Trenched
 - Underground Cable – Bored
- Base Data**
- Transmission Line
 - Project Area
 - Road
 - Railway
 - Hydro One Transmission Line
 - Water

- Golder Data**
- ELC Boundary
 - Significant Sites of Areas of High Diversity
 - Candidate Sites of Areas of High Diversity

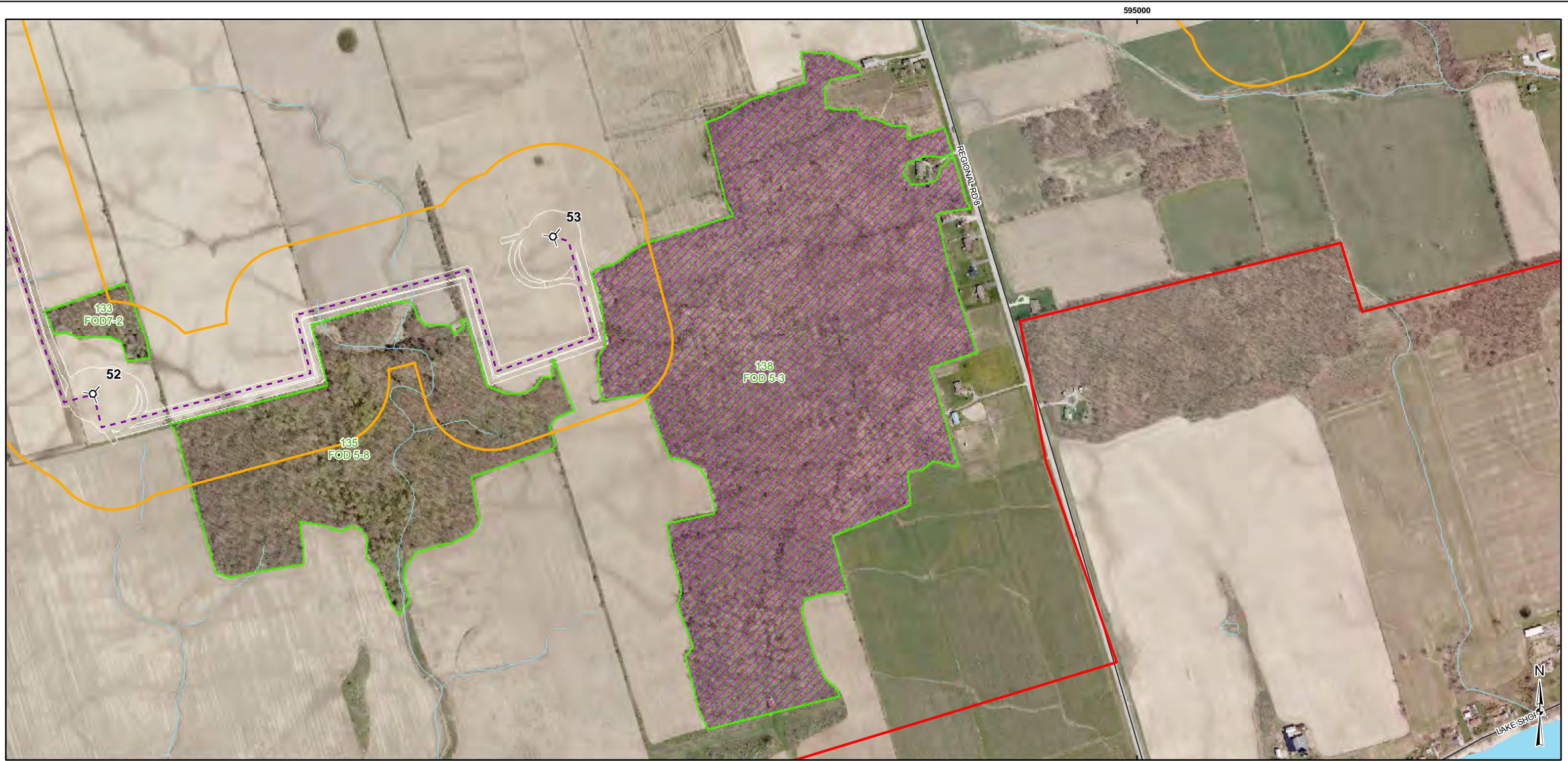
REFERENCE

Base Data - MNR NRVIS, obtained 2004, CANMAP v2008.4
 Produced by Golder Associates Ltd under licence from Ontario Ministry of Natural Resources, © Queens Printer 2010
 Projection: UTM Datum: NAD 83 Coordinate System: UTM Zone 17



PROJECT	Summerhaven Wind Energy Centre		
TITLE	SITE INVESTIGATION OF AREAS OF HIGH DIVERSITY		
 Golder Associates Mississauga, Ontario	PROJECT NO. 10-1151-0035	SCALE AS SHOWN	REV.
	DESIGN JR 27 Aug. 2010	FIGURE: 4-8e	
	GIS PPI/JB 17 May, 2011		
	CHECK DM 17 May, 2011		
	REVIEW		

G:\Projects\2010\10-1151-0035_NextEraNaticokeWind\GIS\MapDocs\DraftReport\NaturalHeritage\EOS\Fig4_8e_AreasofHighDiversity.mxd

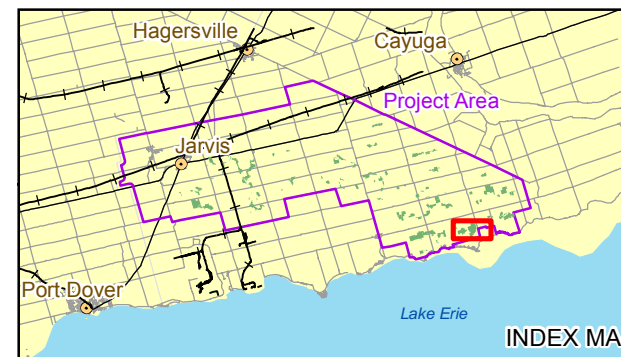


LEGEND

- | | | |
|------------------------------|-----------------------------|--|
| Project Location | Transmission Line | Golden Data |
| Turbine and Number | Project Area | ELC Boundary |
| Meteorological Tower | Base Data | Significant Sites of Areas of High Diversity |
| Overhead Cable | Road | Candidate Sites of Areas of High Diversity |
| Underground Cable – Trenched | Railway | |
| Underground Cable – Bored | Hydro One Transmission Line | |
| | Water | |

REFERENCE

Base Data - MNR NRVIS, obtained 2004, CANMAP v2008.4
 Produced by Golder Associates Ltd under licence from Ontario Ministry of Natural Resources, © Queens Printer 2010
 Projection: UTM Datum: NAD 83 Coordinate System: UTM Zone 17



PROJECT	Summerhaven Wind Energy Centre		
TITLE	SITE INVESTIGATION OF AREAS OF HIGH DIVERSITY		
 Mississauga, Ontario	PROJECT NO.	10-1151-0035	SCALE AS SHOWN
	DESIGN	JR 27 Aug. 2010	REV.
	GIS	PP/JB 17 May, 2011	FIGURE: 4-8f
	CHECK	DM 17 May, 2011	
	REVIEW		

G:\Projects\2010\10-1151-0035_NextEraNaticokeWind\GIS\MXDs\Draft\Report\NaturalHeritage\EOS\Fig4_8f_AreasofHighDiversity.mxd