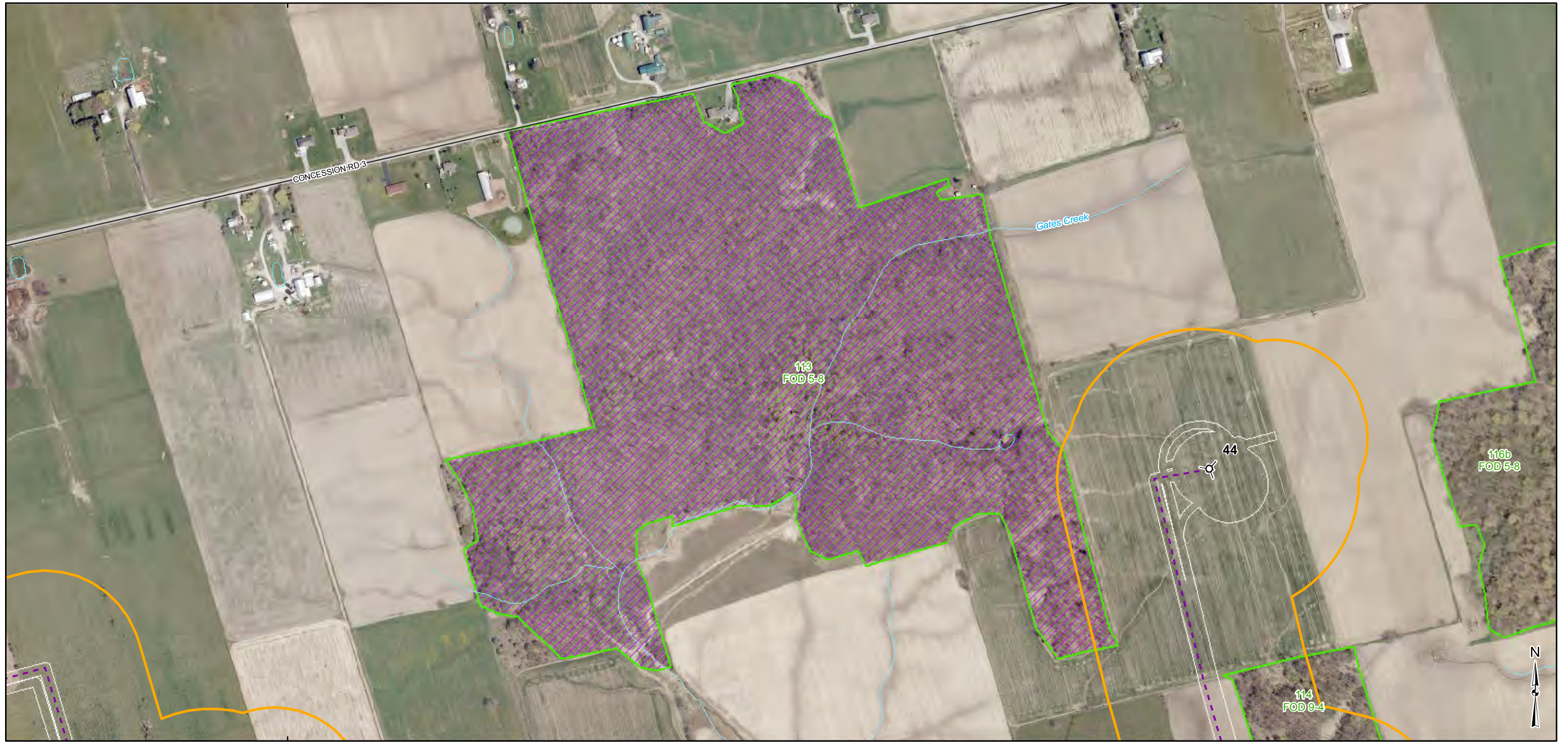


595000



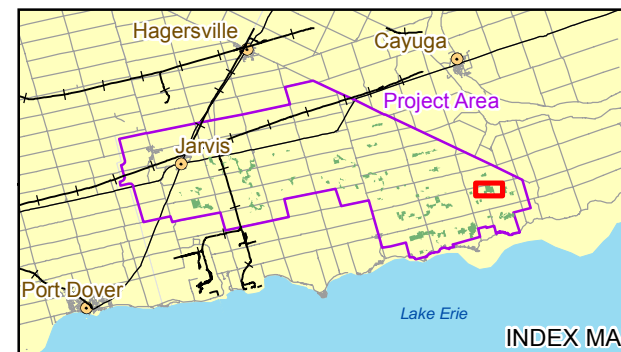
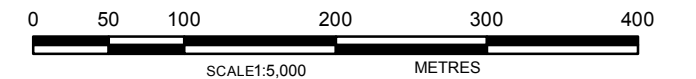
595000

LEGEND

- | | | |
|------------------------------|-----------------------------|---|
| Project Location | Transmission Line | Golder Data |
| Turbine and Number | Project Area | ELC Boundary |
| Meteorological Tower | Base Data | Significant Landbird Migratory Stopover Habitat |
| Overhead Cable | Road | Candidate Landbird Migratory Stopover Habitat |
| Underground Cable – Trenched | Railway | |
| Underground Cable – Bored | Hydro One Transmission Line | |
| | Water | |

REFERENCE

Base Data - MNR NRVIS, obtained 2004, CANMAP v2008.4
 Produced by Golder Associates Ltd under licence from Ontario Ministry of Natural Resources, © Queens Printer 2010
 Projection: UTM Datum: NAD 83 Coordinate System: UTM Zone 17



PROJECT	Summerhaven Wind Energy Centre		
TITLE	SITE INVESTIGATION OF LANDBIRD MIGRATORY STOPOVER HABITAT		
 Golder Associates Mississauga, Ontario	PROJECT NO. 10-1151-0035	SCALE AS SHOWN	REV.
	DESIGN JR 27 Aug. 2010	FIGURE: 4-1a	
	GIS PPI/JB 16 May. 2011		
	CHECK DM 16 May. 2011		
REVIEW			

G:\Projects\2010\10-1151-0035_NextEraNaticokeWind\GIS\MapDocs\Draft\Report\NaturalHeritage\EOS\Fig4_1a_LandbirdMigratoryStopoverHabitat.mxd

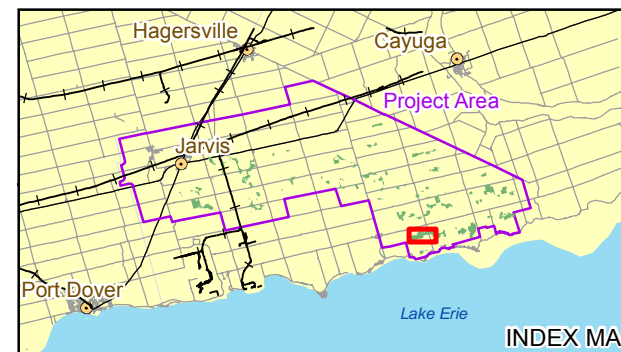
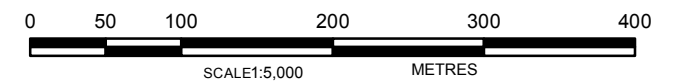


LEGEND

- | | | |
|------------------------------|-----------------------------|---|
| Project Location | Transmission Line | Golder Data |
| Turbine and Number | Project Area | ELC Boundary |
| Meteorological Tower | Base Data | Significant Landbird Migratory Stopover Habitat |
| Overhead Cable | Road | Candidate Landbird Migratory Stopover Habitat |
| Underground Cable – Trenched | Railway | |
| Underground Cable – Bored | Hydro One Transmission Line | |
| | Water | |

REFERENCE

Base Data - MNR NRVIS, obtained 2004, CANMAP v2008.4
 Produced by Golder Associates Ltd under licence from Ontario Ministry of Natural Resources, © Queens Printer 2010
 Projection: UTM Datum: NAD 83 Coordinate System: UTM Zone 17



PROJECT		Summerhaven Wind Energy Centre	
TITLE		SITE INVESTIGATION OF LANDBIRD MIGRATORY STOPOVER HABITAT	
PROJECT NO. 10-1151-0035		SCALE AS SHOWN	REV.
DESIGN	JR 27 Aug. 2010	 Mississauga, Ontario	FIGURE: 4-1b
GIS	PP/JB 16 May, 2011		
CHECK	DM 16 May, 2011		
REVIEW			

G:\Projects\2010\10-1151-0035_NextEraNaticokeWind\GIS\MapDocs\Draft\Report\NaturalHeritage\EOS\Fig4_1b_LandbirdMigratoryStopoverHabitat.mxd

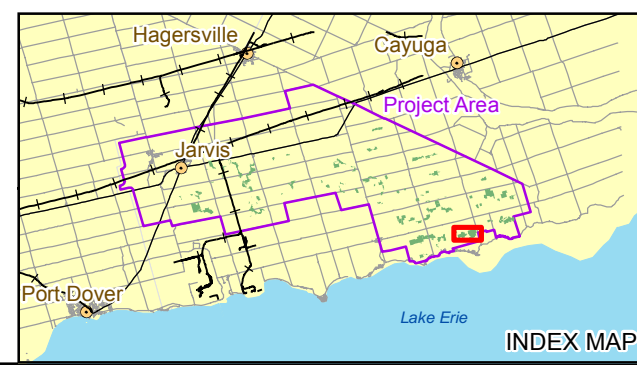
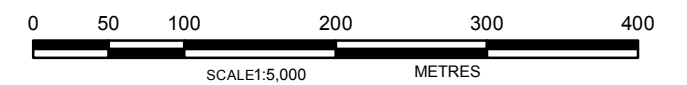


LEGEND

Project Location	Transmission Line	Golder Data
Turbine and Number	Project Area	ELC Boundary
Meteorological Tower	Base Data	Significant Landbird Migratory Stopover Habitat
Overhead Cable	Road	Candidate Landbird Migratory Stopover Habitat
Underground Cable – Trenched	Railway	
Underground Cable – Bored	Hydro One Transmission Line	
	Water	

REFERENCE

Base Data - MNR NRVIS, obtained 2004, CANMAP v2008.4
 Produced by Golder Associates Ltd under licence from Ontario Ministry of Natural Resources, © Queens Printer 2010
 Projection: UTM Datum: NAD 83 Coordinate System: UTM Zone 17



PROJECT	Summerhaven Wind Energy Centre			
TITLE	SITE INVESTIGATION OF LANDBIRD MIGRATORY STOPOVER HABITAT			
 Mississauga, Ontario	PROJECT NO. 10-1151-0035	SCALE AS SHOWN	REV.	FIGURE: 4-1c
	DESIGN JR 27 Aug. 2010			
	GIS PPI/JB 17 May. 2011			
	CHECK DM 17 May. 2011			

G:\Projects\2010\10-1151-0035_NextEraNaticokeWind\GIS\MapDocs\Draft\Report\NaturalHeritage\EOS\Fig4_1c_LandbirdMigratoryStopoverHabitat.mxd

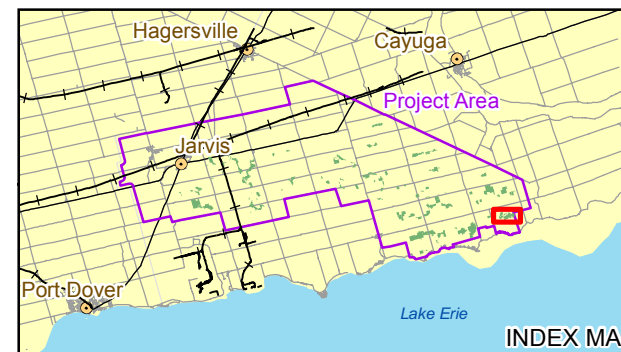


LEGEND

- | | | |
|--------------------------------|-------------------------------|---|
| Project Location | Transmission Line | Golder Data |
| ⊗ Turbine and Number | — Transmission Line | ▭ ELC Boundary |
| ⊗ Meteorological Tower | ▭ Project Area | ▨ Significant Landbird Migratory Stopover Habitat |
| — Overhead Cable | Base Data | ▨ Candidate Landbird Migratory Stopover Habitat |
| — Underground Cable – Trenched | — Road | |
| — Underground Cable – Bored | — Railway | |
| | — Hydro One Transmission Line | |
| | ▭ Water | |

REFERENCE

Base Data - MNR NRVIS, obtained 2004, CANMAP v2008.4
 Produced by Golder Associates Ltd under licence from Ontario Ministry of Natural Resources, © Queens Printer 2010
 Projection: UTM Datum: NAD 83 Coordinate System: UTM Zone 17

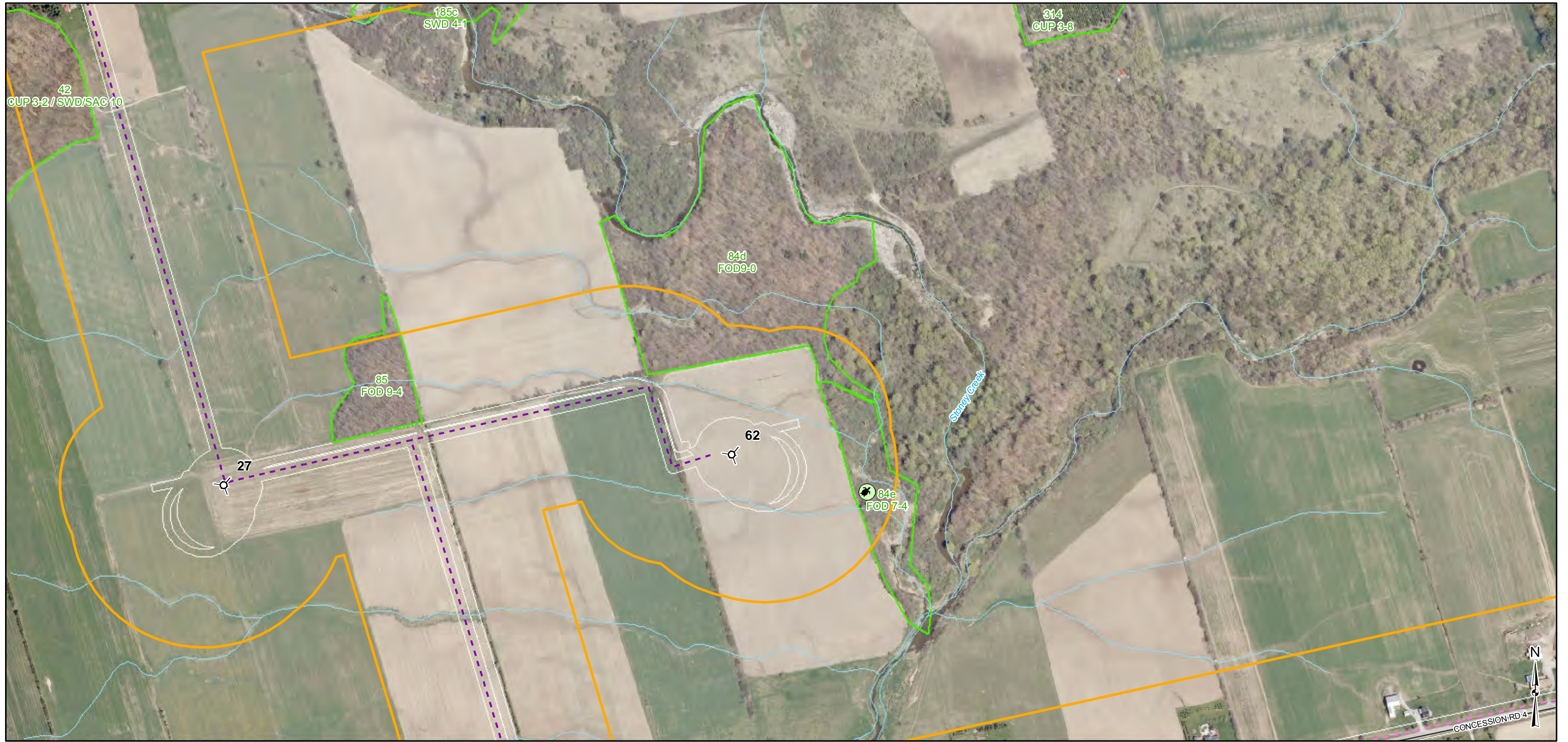


PROJECT	Summerhaven Wind Energy Centre			
TITLE	SITE INVESTIGATION OF LANDBIRD MIGRATORY STOPOVER HABITAT			
	PROJECT NO. 10-1151-0035	SCALE AS SHOWN	REV.	
	DESIGN JR 27 Aug. 2010			
	GIS PP/JB 17 May. 2011			
	CHECK DM 17 May. 2011			
	REVIEW			



FIGURE: 4-1d

G:\Projects\2010\10-1151-0035_NextEraNaticokeWind\GIS\MapXDs\Draft\Report\NaturalHeritage\EOS\Fig4_1d_LandbirdMigratoryStopoverHabitat.mxd

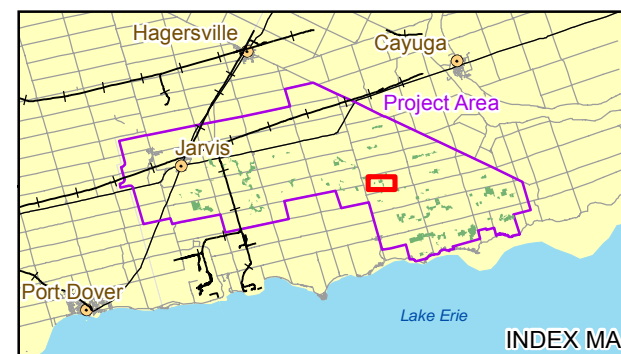


LEGEND

- | | | |
|------------------------------|-----------------------------|---------------------|
| Project Location | Transmission Line | Golder Data |
| Turbine and Number | Project Area | ELC Boundary |
| Meteorological Tower | Base Data | Reptile Hibernacula |
| Overhead Cable | Road | |
| Underground Cable – Trenched | Railway | |
| Underground Cable – Bored | Hydro One Transmission Line | |
| | Water | |

REFERENCE

Base Data - MNR NRVIS, obtained 2004, CANMAP v2008.4
 Produced by Golder Associates Ltd under licence from Ontario Ministry of Natural Resources, © Queens Printer 2010
 Projection: UTM Datum: NAD 83 Coordinate System: UTM Zone 17



PROJECT	Summerhaven Wind Energy Centre			
TITLE	SITE INVESTIGATION OF REPTILE HIBERNACULA			
Golder Associates Mississauga, Ontario	PROJECT NO.	10-1151-0035	SCALE AS SHOWN	REV.
	DESIGN	JR 27 Aug. 2010	FIGURE: 4-2a	
	GIS	PP/JB 17 May, 2011		
	CHECK	DM 17 May, 2011		
	REVIEW			

G:\Projects\2010\10-1151-0035_NextEraNaticoke\Wind\GIS\MXDs\Draft\Report\NaturalHeritage\EOS\Fig4_2a_ReptileHibernacula.mxd

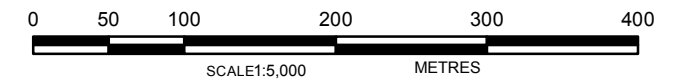



LEGEND

- | | | |
|--------------------------------|-------------------------------|-----------------------|
| Project Location | Transmission Line | Golder Data |
| ⊗ Turbine and Number | — Transmission Line | ▭ ELC Boundary |
| ⊗ Meteorological Tower | ▭ Project Area | ⊗ Reptile Hibernacula |
| — Overhead Cable | — Road | |
| — Underground Cable – Trenched | — Railway | |
| — Underground Cable – Bored | — Hydro One Transmission Line | |
| | ▭ Water | |

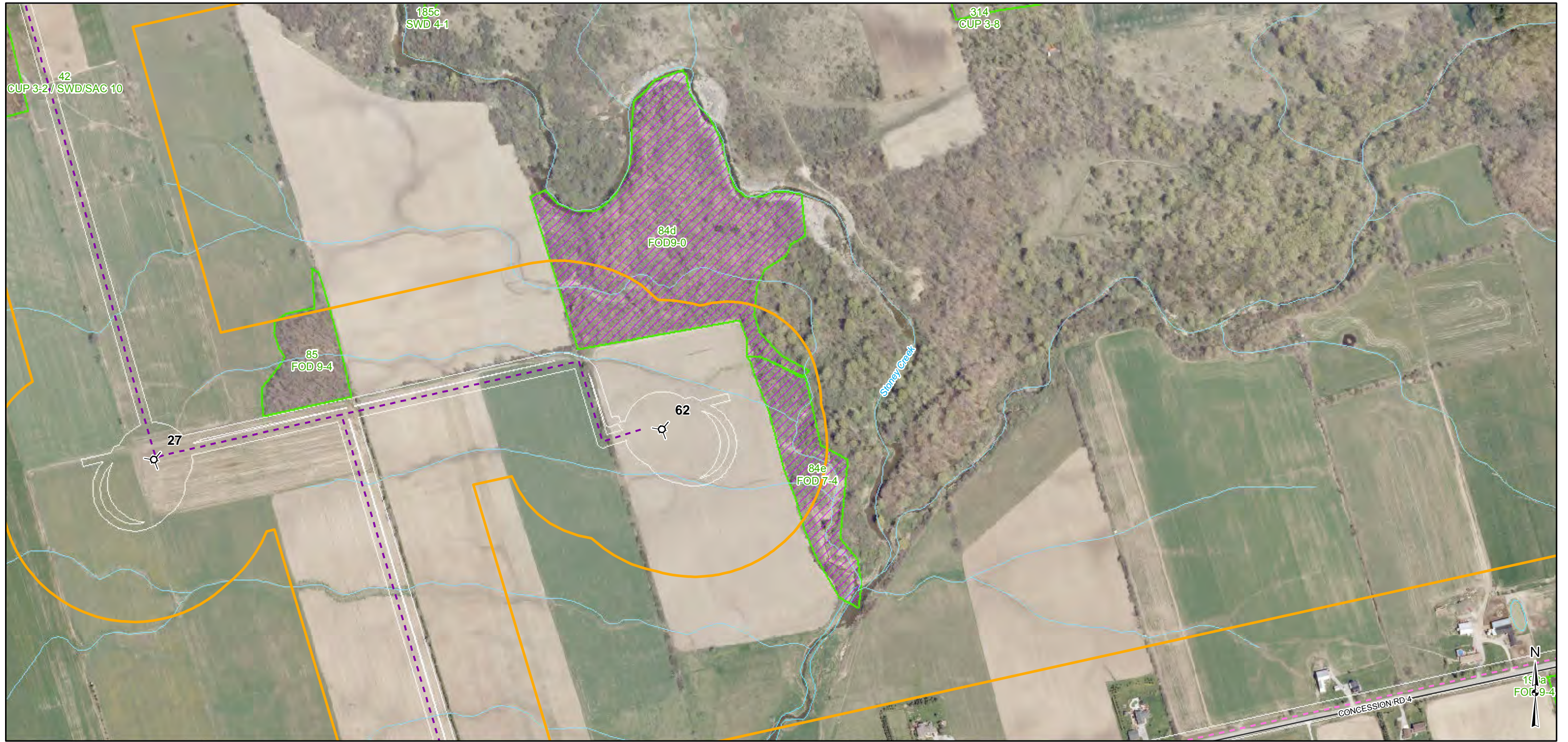
REFERENCE

Base Data - MNR NRVIS, obtained 2004, CANMAP v2008.4
 Produced by Golder Associates Ltd under licence from Ontario Ministry of Natural Resources, © Queens Printer 2010
 Projection: UTM Datum: NAD 83 Coordinate System: UTM Zone 17



PROJECT	Summerhaven Wind Energy Centre			
TITLE	SITE INVESTIGATION OF REPTILE HIBERNACULA			
 Mississauga, Ontario	PROJECT NO.	10-1151-0035	SCALE AS SHOWN	REV.
	DESIGN	JR 27 Aug. 2010	FIGURE: 4-2b	
	GIS	PP/JB 17 May, 2011		
	CHECK	DM 17 May, 2011		
	REVIEW			

G:\Projects\2010\10-1151-0035_NextEraNaticokeWind\GIS\MXDs\Draft\Report\NaturalHeritage\EOS\Fig4_2b_ReptileHibernacula.mxd



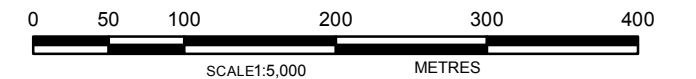
LEGEND

- Project Location**
- Turbine and Number
 - Meteorological Tower
 - Overhead Cable
 - Underground Cable – Trenched
 - Underground Cable – Bored
- Base Data**
- Transmission Line
 - Project Area
 - Road
 - Railway
 - Hydro One Transmission Line
 - Water

- Golder Data**
- ELC Boundary
 - Significant Bat Maternity Roost Habitat
 - Candidate Bat Maternity Roost Habitat

REFERENCE

Base Data - MNR NRVIS, obtained 2004, CANMAP v2008.4
 Produced by Golder Associates Ltd under licence from Ontario Ministry of Natural Resources, © Queens Printer 2010
 Projection: UTM Datum: NAD 83 Coordinate System: UTM Zone 17



PROJECT	Summerhaven Wind Energy Centre			
TITLE	SITE INVESTIGATION OF BAT MATERNITY ROOST HABITAT			
 Golder Associates Mississauga, Ontario	PROJECT NO.	10-1151-0035	SCALE AS SHOWN	REV.
	DESIGN	JR	27 Aug. 2010	FIGURE: 4-3a
	GIS	PP/JB	17 May. 2011	
	CHECK	DM	17 May. 2011	
	REVIEW			

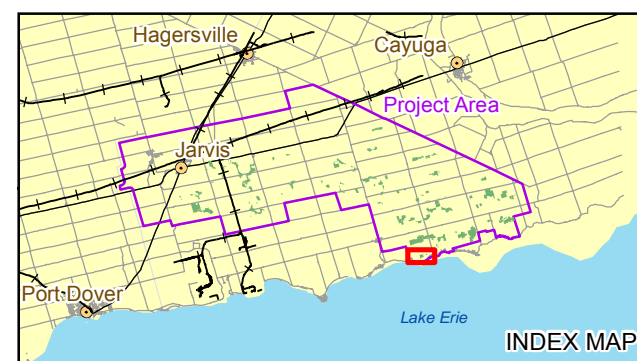



LEGEND

Project Location	Base Data	Golder Data
⊗ Turbine and Number	— Road	▭ ELC Boundary
⊗ Meteorological Tower	— Railway	▨ Significant Bat Maternity Roost Habitat
— Overhead Cable	— Hydro One Transmission Line	▨ Candidate Bat Maternity Roost Habitat
— Underground Cable – Trenched	□ Water	
— Underground Cable – Bored		

REFERENCE

Base Data - MNR NRVIS, obtained 2004, CANMAP v2008.4
 Produced by Golder Associates Ltd under licence from Ontario Ministry of Natural Resources, © Queens Printer 2010
 Projection: UTM Datum: NAD 83 Coordinate System: UTM Zone 17



PROJECT	Summerhaven Wind Energy Centre		
TITLE	SITE INVESTIGATION OF BAT MATERNITY ROOST HABITAT		
 Mississauga, Ontario	PROJECT NO. 10-1151-0035	SCALE AS SHOWN	REV.
	DESIGN JR 27 Aug. 2010	FIGURE: 4-3b	
	GIS PPI/JB 17 May. 2011		
	CHECK DM 17 May. 2011		
REVIEW			

G:\Projects\2010\10-1151-0035_NextEraNaticoke\Wind\GIS\MapXDs\Draft\Report\NaturalHeritage\EOS\Fig4_3b_BatMaternityRoostHabitat.mxd

595000



595000

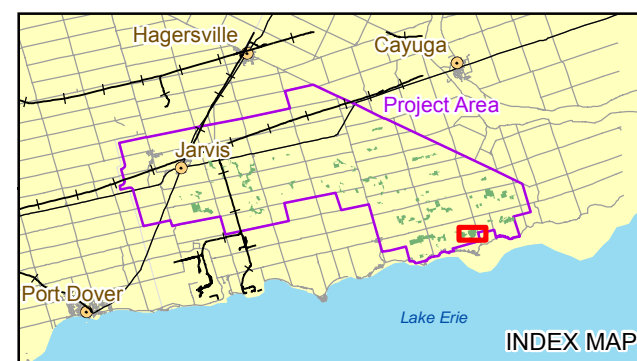


LEGEND

- | | | |
|------------------------------|-----------------------------|---|
| Project Location | Transmission Line | Golder Data |
| Turbine and Number | Project Area | ELC Boundary |
| Meteorological Tower | Base Data | Significant Bat Maternity Roost Habitat |
| Overhead Cable | Road | Candidate Bat Maternity Roost Habitat |
| Underground Cable – Trenched | Railway | |
| Underground Cable – Bored | Hydro One Transmission Line | |
| | Water | |

REFERENCE

Base Data - MNR NRVIS, obtained 2004, CANMAP v2008.4
 Produced by Golder Associates Ltd under licence from Ontario Ministry of Natural Resources, © Queens Printer 2010
 Projection: UTM Datum: NAD 83 Coordinate System: UTM Zone 17



PROJECT	Summerhaven Wind Energy Centre			
TITLE	SITE INVESTIGATION OF BAT MATERNITY ROOST HABITAT			
 Mississauga, Ontario	PROJECT NO.	10-1151-0035	SCALE AS SHOWN	REV.
	DESIGN	JR	27 Aug. 2010	FIGURE: 4-3C
	GIS	PP/JB	17 May, 2011	
	CHECK	DM	17 May, 2011	
REVIEW				

G:\Projects\2010\10-1151-0035_NextEraNaticokeWind\GIS\MapDocs\DraftReport\NaturalHeritage\EOS\Fig4_3c_BatMaternityRoostHabitat.mxd