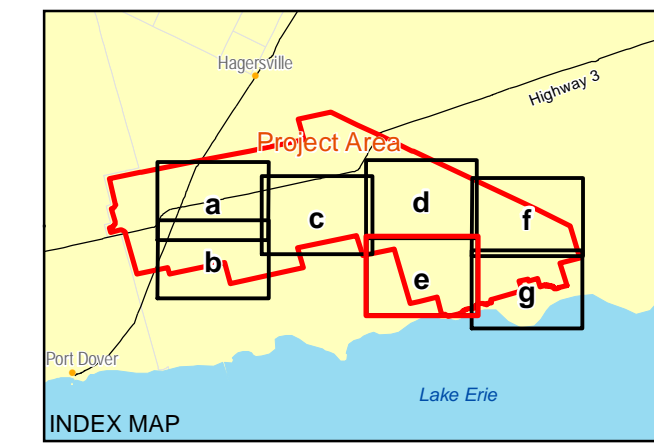




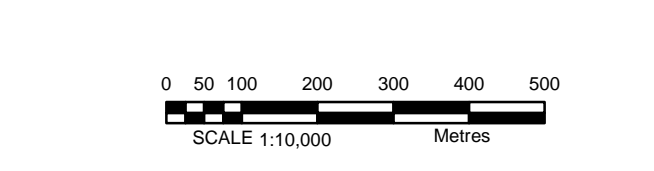
- LEGEND**
- Project Location**
- Turbine And Number
  - Turbine Blade Limit
  - Meteorological Tower
  - Overhead Cable
  - Underground Cable - Directional Drill of Punch/Bore
  - Underground Cable - Trenched
  - Transmission Line
  - Substation
  - Switchyard and Hydro One Point of Interconnect
  - Temporary Storage / Laydown Area
  - Construction Field Offices and Temporary Storage
  - Access/Service Road
  - 120m From Project Location
- Significant Natural Features (known or candidate)**
- Known Natural Feature
  - Provincially Significant Wetland (MNR)
  - Life Science ANSI
  - Earth Science ANSI
  - Not Significant Valleyland
  - Significant Valleyland
  - Not Significant Wetland
  - Significant Wetland
  - Not Significant Woodland
  - Significant Woodland
- Ecological Land Classification**
- Cultural (CU)
  - Forest (FO)
  - Marsh (MA)
  - Open Aquatic (OA)
  - Swamp (SW)
- Base Data**
- Community
  - Highway
  - Major Road
  - Local Road
  - Railway
  - Hydro One Transmission Line
  - Watercourse
  - Water (NRVIS)
  - Wetland (NRVIS)
  - Provincial Park
  - Conservation Area
  - Lot Boundary
  - Project Area



**REFERENCE**

1. Base Data - MNR NRVIS, obtained 2004, CANMAP v2008.4
2. Imagery - FirstBase Solutions / Haldimand County, 2006.
3. Natural Features compiled by Golden from NRVIS base data, NHC Natural Areas and MNR Wetland and ANSI data, obtained 2010
4. Valleylands made from Haldimand County Hazardland data, obtained 2010

Produced by Golden Associates Ltd under licence from Ontario Ministry of Natural Resources, © Queens Printer 2010  
 Projection: Transverse Mercator Datum: NAD 83 Coordinate System: UTM Zone 17



PROJECT: Summerhaven Wind Energy Centre

TITLE: SITE INVESTIGATION OF WETLANDS, WOODLAND AND VALLEYLANDS

PROJECT NO. 10151-0015 SCALE AS SHOWN REV. 1

ISSUED: 11 May 2008

DATE: 27 Jan 2011

DESIGNER: GOLDEN ASSOCIATES

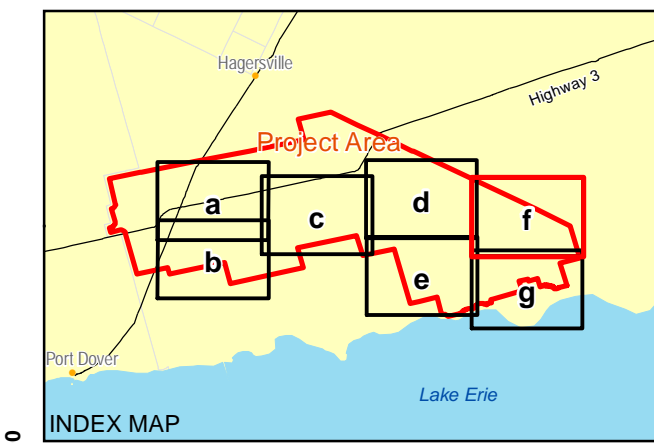
CLIENT: GOLDEN ASSOCIATES

FIGURE: 3e

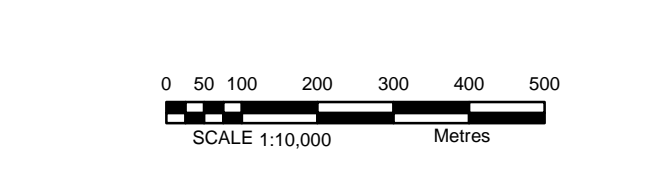
© Project 2011 10151-0015 - Name is a trademark of Golden Associates Ltd. All rights reserved. Evaluation of this document is prohibited.



- LEGEND**
- Project Location**
- Turbine And Number
  - Turbine Blade Limit
  - Meteorological Tower
  - Overhead Cable
  - Underground Cable - Directional Drill of Punch/Bore
  - Underground Cable - Trenched
  - Transmission Line
  - Substation
  - Switchyard and Hydro One Point of Interconnect
  - Temporary Storage / Laydown Area
  - Construction Field Offices and Temporary Storage
  - Access/Service Road
  - 120m From Project Location
- Significant Natural Features (known or candidate)**
- Known Natural Feature
  - Provincially Significant Wetland (MNR)
  - Life Science ANSI
  - Earth Science ANSI
  - Not Significant Valleyland
  - Significant Valleyland
  - Not Significant Wetland
  - Significant Wetland
  - Not Significant Woodland
  - Significant Woodland
- Ecological Land Classification**
- Cultural (CU)
  - Forest (FO)
  - Marsh (MA)
  - Open Aquatic (OA)
  - Swamp (SW)
- Base Data**
- Community
  - Highway
  - Major Road
  - Local Road
  - Railway
  - Hydro One Transmission Line
  - Watercourse
  - Water (NRVIS)
  - Wetland (NRVIS)
  - Provincial Park
  - Conservation Area
  - Lot Boundary
  - Project Area



- REFERENCE**
- Base Data - MNR NRVIS, obtained 2004, CANMAP v2008.4
  - Imagery - FirstBase Solutions / Haldimand County, 2006.
  - Natural Features compiled by Golden from NRVIS base data, NHC Natural Areas and MNR Wetland and ANSI data, obtained 2010
  - Valleylands made from Haldimand County Hazardland data, obtained 2010



PROJECT: Summerhaven Wind Energy Centre

TITLE: SITE INVESTIGATION OF WETLANDS, WOODLAND AND VALLEYLANDS

PROJECT NO: 10151-0005 SCALE AS SHOWN REV: 01

DATE: 15 May 2008

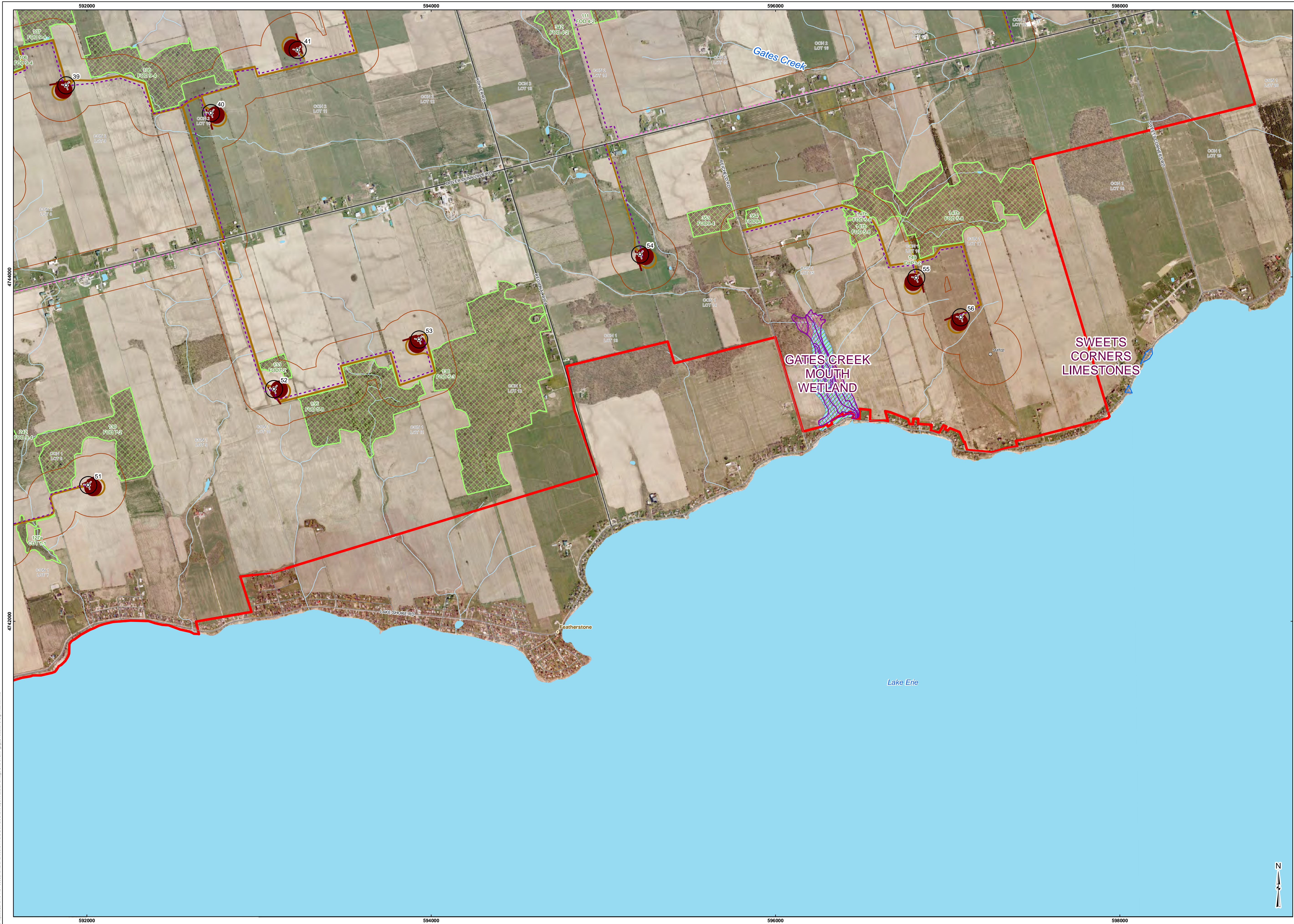
DATE: 27 Jan 2011

DATE: 27 Jan 2011

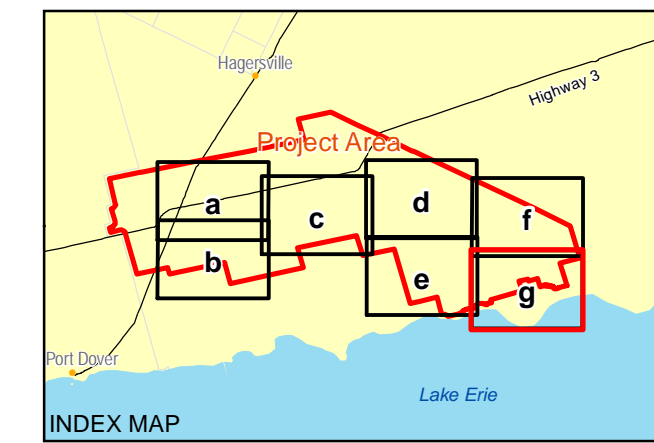
DATE: 27 Jan 2011

FIGURE: 3f

© Project 2011 10151-0005. North is indicated by the North Arrow. All rights reserved. Golden Associates Ltd. All other rights reserved.



- LEGEND**
- Project Location**
- Turbine And Number
  - Turbine Blade Limit
  - Meteorological Tower
  - Overhead Cable
  - Underground Cable - Directional Drill of Punch/Bore
  - Underground Cable - Trenched
  - Transmission Line
  - Substation
  - Switchyard and Hydro One Point of Interconnect
  - Temporary Storage / Laydown Area
  - Construction Field Offices and Temporary Storage
  - Access/Service Road
  - 120m From Project Location
- Significant Natural Features (known or candidate)**
- Known Natural Feature
  - Provincially Significant Wetland (MNR)
  - Life Science ANSI
  - Earth Science ANSI
  - Not Significant Valleyland
  - Significant Valleyland
  - Not Significant Wetland
  - Significant Wetland
  - Not Significant Woodland
  - Significant Woodland
- Ecological Land Classification**
- Cultural (CU)
  - Forest (FO)
  - Marsh (MA)
  - Open Aquatic (OA)
  - Swamp (SW)
- Base Data**
- Community
  - Highway
  - Major Road
  - Local Road
  - Railway
  - Hydro One Transmission Line
  - Watercourse
  - Water (NRVIS)
  - Wetland (NRVIS)
  - Provincial Park
  - Conservation Area
  - Lot Boundary
  - Project Area



**REFERENCE**

- Base Data - MNR NRVIS, obtained 2004, CANMAP v2008.4
- Imagery - FirstBase Solutions / Haldimand County, 2006.
- Natural Features compiled by Golden from NRVIS base data, NHC Natural Areas and MNR Wetland and ANSI data, obtained 2010
- Valleylands made from Haldimand County Hazardland data, obtained 2010

Produced by Golden Associates Ltd under licence from Ontario Ministry of Natural Resources, © Queens Printer 2010  
 Projection: Transverse Mercator Datum: NAD 83 Coordinate System: UTM Zone 17



PROJECT	Summerhaven Wind Energy Centre
TITLE	SITE INVESTIGATION OF WETLANDS, WOODLAND AND VALLEYLANDS
PROJECT NO.	10155-0005
DATE	15 Aug 2008
SCALE AS SHOWN	
REV.	
DESIGN	PP
DATE	27 Jan 2011
REVISION	
DATE	27 Jan 2011
FIGURE:	3g

© Project 2010 10155-0005 - Name: E:\land\lake\win\GIS\MXD\SiteInvestigation\Map\Fig3g\_EvaluationOfSignificance.mxd