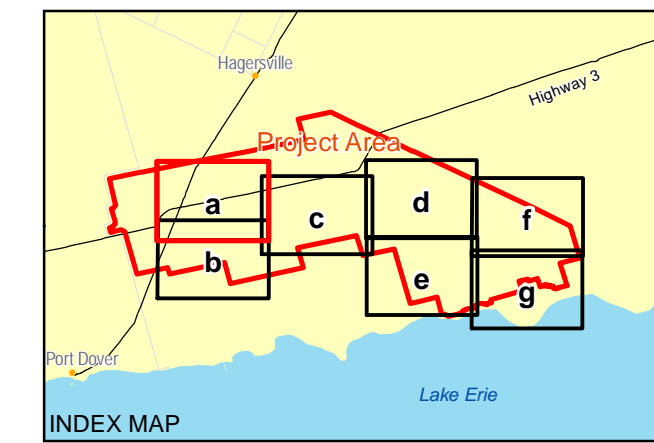


- LEGEND**
- Project Location**
- Turbine And Number
  - Turbine Blade Limit
  - Meteorological Tower
  - Overhead Cable
  - Underground Cable - Directional Drill of Punch/Bore
  - Underground Cable - Trenched
  - Transmission Line
  - Substation
  - Switchyard and Hydro One Point of Interconnect
  - Temporary Storage / Laydown Area
  - Construction Field Offices and Temporary Storage
  - Access/Service Road
  - 120m From Project Location
- Significant Natural Features (known or candidate)**
- Known Natural Feature
  - Provincially Significant Wetland (MNR)
  - Life Science ANSI
  - Earth Science ANSI
  - Not Significant Valleyland
  - Significant Valleyland
  - Not Significant Wetland
  - Significant Wetland
  - Not Significant Woodland
  - Significant Woodland
- Ecological Land Classification**
- Cultural (CU)
  - Forest (FO)
  - Marsh (MA)
  - Open Aquatic (OA)
  - Swamp (SW)
- Base Data**
- Community
  - Highway
  - Major Road
  - Local Road
  - Railway
  - Hydro One Transmission Line
  - Watercourse
  - Water (NRVIS)
  - Wetland (NRVIS)
  - Provincial Park
  - Conservation Area
  - Lot Boundary
  - Project Area



- REFERENCE**
1. Base Data - MNR NRVIS, obtained 2004, CANMAP v2008.4
  2. Imagery - FirstBase Solutions / Halton County, 2006.
  3. Natural Features compiled by Golden from NRVIS base data, NHC Natural Areas and MNR Wetland and ANSI data, obtained 2010
  4. Valleylands made from Halton County Hazardous data, obtained 2010
- Produced by Golden Associates Ltd under licence from Ontario Ministry of Natural Resources, © Queens Printer 2010  
 Projection: Transverse Mercator Datum: NAD 83 Coordinate System: UTM Zone 17

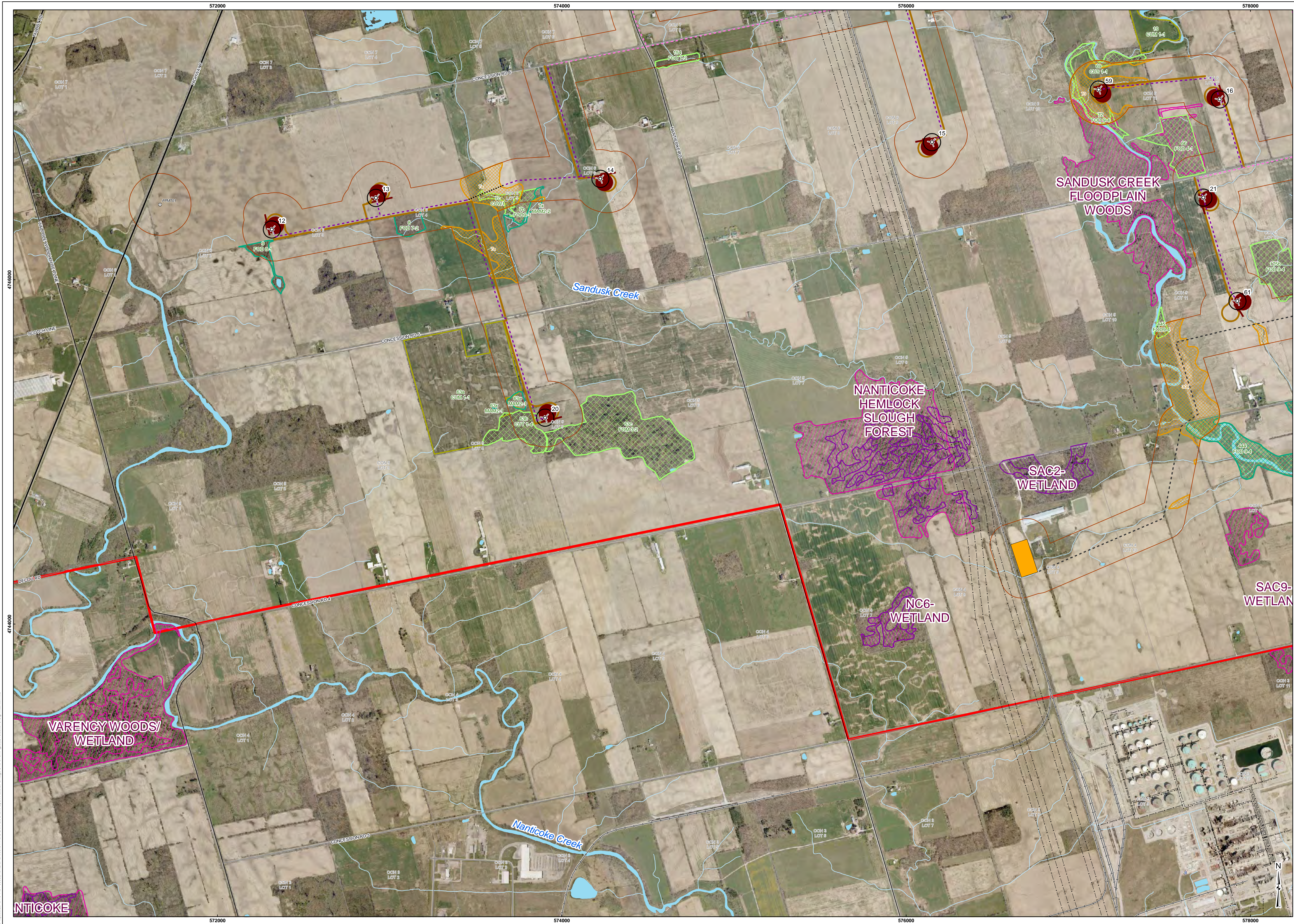


PROJECT	Summerhaven Wind Energy Centre
TITLE	SITE INVESTIGATION OF WETLANDS, WOODLAND AND VALLEYLANDS
PROJECT NO.	10151-0005
DATE	15 May 2008
SCALE AS SHOWN	REV.
DATE	27 Jan 2011
DESIGNED BY	REV.
DATE	27 Jan 2011
DEVELOPED BY	REV.
DATE	27 Jan 2011

Golden Associates  
 Mississauga, Ontario

FIGURE: 3a





- LEGEND**
- Project Location**
- Turbine And Number
  - Turbine Blade Limit
  - Meteorological Tower
  - Overhead Cable
  - Underground Cable - Directional Drill of Punch/Bore
  - Underground Cable - Trenched
  - Transmission Line
  - Substation
  - Switchyard and Hydro One Point of Interconnect
  - Temporary Storage / Laydown Area
  - Construction Field Offices and Temporary Storage
  - Access/Service Road
  - 120m From Project Location
- Significant Natural Features (known or candidate)**
- Known Natural Feature
  - Provincially Significant Wetland (MNR)
  - Life Science ANSI
  - Earth Science ANSI
  - Not Significant Valleyland
  - Significant Valleyland
  - Not Significant Wetland
  - Significant Wetland
  - Not Significant Woodland
  - Significant Woodland
- Ecological Land Classification**
- Cultural (CU)
  - Forest (FO)
  - Marsh (MA)
  - Open Aquatic (OA)
  - Swamp (SW)
- Base Data**
- Community
  - Highway
  - Major Road
  - Local Road
  - Railway
  - Hydro One Transmission Line
  - Watercourse
  - Water (NRVIS)
  - Wetland (NRVIS)
  - Provincial Park
  - Conservation Area
  - Lot Boundary
  - Project Area



**REFERENCE**

1. Base Data - MNR NRVIS, obtained 2004, CANMAP v2008.4
2. Imagery - FirstBase Solutions / Haldimand County, 2006.
3. Natural Features compiled by Golden from NRVIS base data, NHC Natural Areas and MNR Wetland and ANSI data, obtained 2010
4. Valleylands made from Haldimand County Hazardland data, obtained 2010

Produced by Golden Associates Ltd under licence from Ontario Ministry of Natural Resources, © Queens Printer 2010  
 Projection: Transverse Mercator Datum: NAD 83 Coordinate System: UTM Zone 17

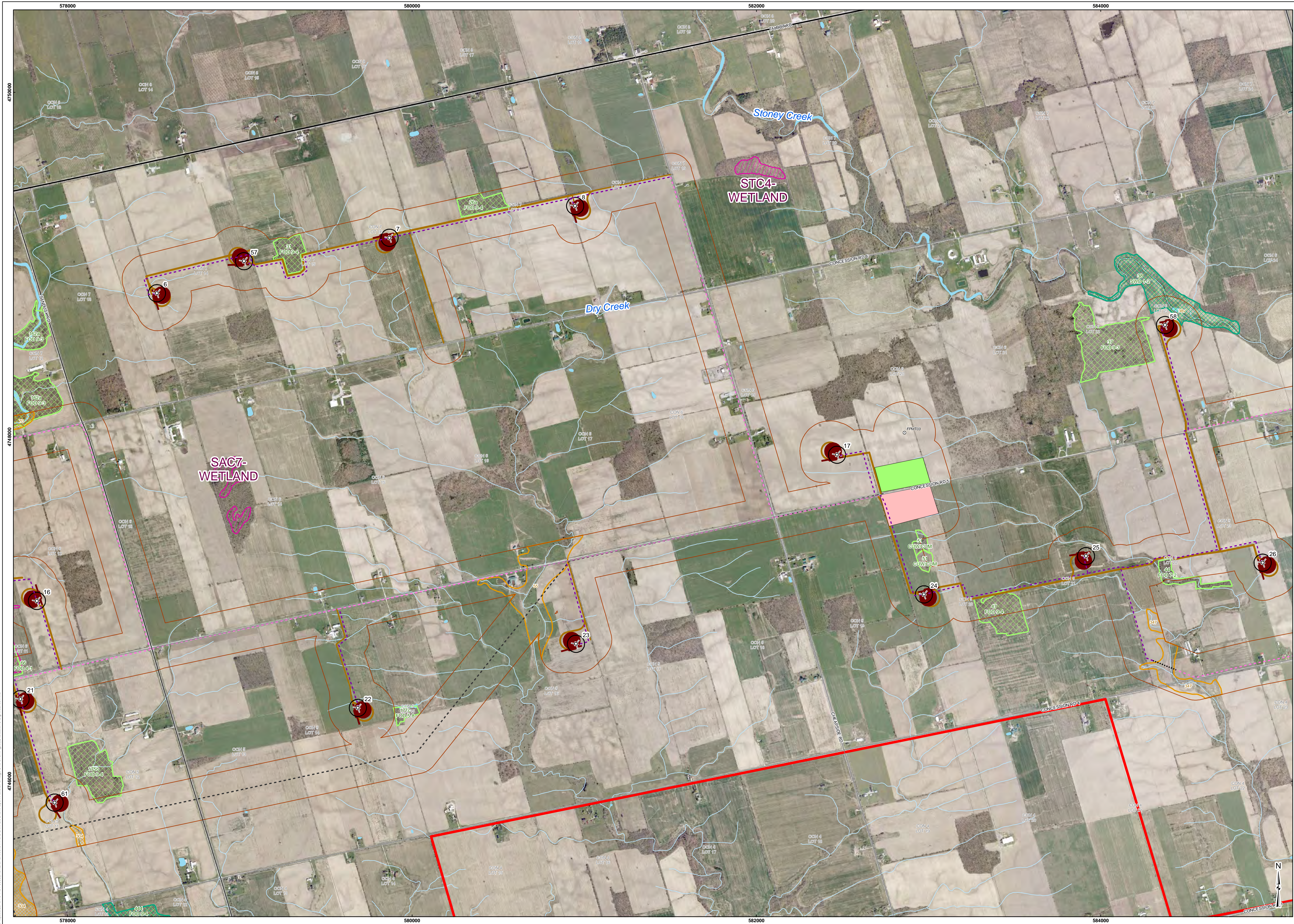
0 50 100 200 300 400 500  
 SCALE 1:10,000  
 Metres

**PROJECT**  
 Summerhaven Wind Energy Centre

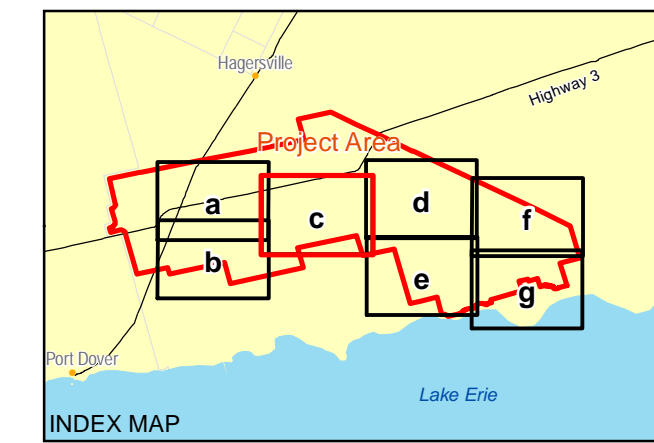
**TITLE**  
 SITE INVESTIGATION OF WETLANDS, WOODLAND AND VALLEYLANDS

**FIGURE: 3b**

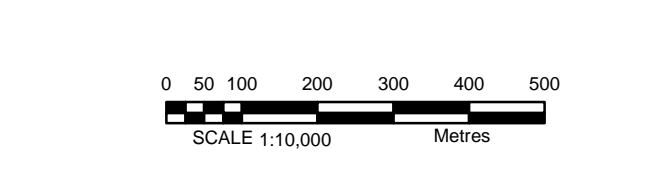




- LEGEND**
- Project Location**
- Turbine And Number
  - Turbine Blade Limit
  - Meteorological Tower
  - Overhead Cable
  - Underground Cable - Directional Drill of Punch/Bore
  - Underground Cable - Trenched
  - Transmission Line
  - Substation
  - Switchyard and Hydro One Point of Interconnect
  - Temporary Storage / Laydown Area
  - Construction Field Offices and Temporary Storage
  - Access/Service Road
  - 120m From Project Location
- Significant Natural Features (known or candidate)**
- Known Natural Feature
  - Provincially Significant Wetland (MNR)
  - Life Science ANSI
  - Earth Science ANSI
  - Not Significant Valleyland
  - Significant Valleyland
  - Not Significant Wetland
  - Significant Wetland
  - Not Significant Woodland
  - Significant Woodland
- Ecological Land Classification**
- Cultural (CU)
  - Forest (FO)
  - Marsh (MA)
  - Open Aquatic (OA)
  - Swamp (SW)
- Base Data**
- Community
  - Highway
  - Major Road
  - Local Road
  - Railway
  - Hydro One Transmission Line
  - Watercourse
  - Water (NRVIS)
  - Wetland (NRVIS)
  - Provincial Park
  - Conservation Area
  - Lot Boundary
  - Project Area



- REFERENCE**
1. Base Data - MNR NRVIS, obtained 2004, CANMAP v2008.4
  2. Imagery - FirstBase Solutions / Haldimand County, 2006.
  3. Natural Features compiled by Golden from NRVIS base data, NHC Natural Areas and MNR Wetland and ANSI data, obtained 2010
  4. Valleylands made from Haldimand County Hazardland data, obtained 2010
- Produced by Golden Associates Ltd under licence from  
 Ontario Ministry of Natural Resources, © Queens Printer 2010  
 Projection: Transverse Mercator Datum: NAD 83 Coordinate System: UTM Zone 17



PROJECT: Summerhaven Wind Energy Centre

TITLE: SITE INVESTIGATION OF WETLANDS, WOODLAND AND VALLEYLANDS

PROJECT NO: 10151-0005 SCALE AS SHOWN REV: 01

DATE: 27 Jan 2011

DESIGNED BY: [Name]

DRAWN BY: [Name]

CHECKED BY: [Name]

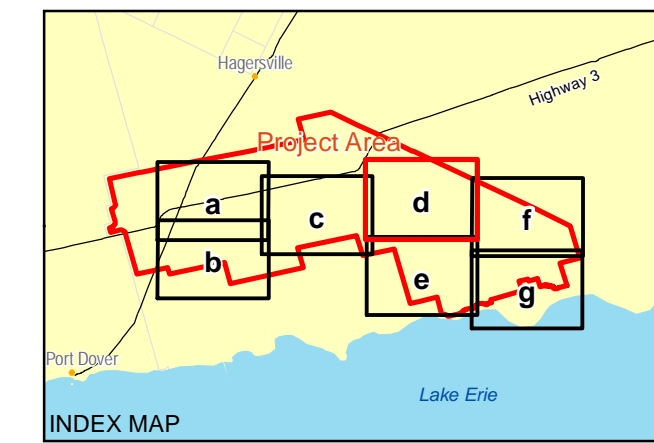
APPROVED BY: [Name]

FIGURE: 3c





- LEGEND**
- Project Location**
- Turbine And Number
  - Turbine Blade Limit
  - Meteorological Tower
  - Overhead Cable
  - Underground Cable - Directional Drill of Punch/Bore
  - Underground Cable - Trenched
  - Transmission Line
  - Substation
  - Switchyard and Hydro One Point of Interconnect
  - Temporary Storage / Laydown Area
  - Construction Field Offices and Temporary Storage
  - Access/Service Road
  - 120m From Project Location
- Significant Natural Features (known or candidate)**
- Known Natural Feature
  - Provincially Significant Wetland (MNR)
  - Life Science ANSI
  - Earth Science ANSI
  - Not Significant Valleyland
  - Significant Valleyland
  - Not Significant Wetland
  - Significant Wetland
  - Not Significant Woodland
  - Significant Woodland
- Ecological Land Classification**
- Cultural (CU)
  - Forest (FO)
  - Marsh (MA)
  - Open Aquatic (OA)
  - Swamp (SW)
- Base Data**
- Community
  - Highway
  - Major Road
  - Local Road
  - Railway
  - Hydro One Transmission Line
  - Watercourse
  - Water (NRVIS)
  - Wetland (NRVIS)
  - Provincial Park
  - Conservation Area
  - Lot Boundary
  - Project Area



- REFERENCE**
1. Base Data - MNR NRVIS, obtained 2004, CANMAP v2008.4
  2. Imagery - FirstBase Solutions / Haldimand County, 2006.
  3. Natural Features compiled by Golden from NRVIS base data, NHIC Natural Areas and MNR Wetland and ANSI data, obtained 2010
  4. Valleylands made from Haldimand County Hazardland data, obtained 2010

Produced by Golden Associates Ltd under licence from Ontario Ministry of Natural Resources, © Queens Printer 2010  
 Projection: Transverse Mercator Datum: NAD 83 Coordinate System: UTM Zone 17

0 50 100 200 300 400 500  
 SCALE 1:10,000 Metres

PROJECT: Summerhaven Wind Energy Centre  
 TITLE: SITE INVESTIGATION OF WETLANDS, WOODLAND AND VALLEYLANDS

PROJECT NO. 10155-0005 SCALE AS SHOWN REV. 01  
 DATE: 11 May 2008  
 GS: 27 Jan 2011  
 DELIVER: 27 Jan 2011

Golden ASSOCIATES  
 Mississauga, Ontario

FIGURE: 3d