



- LEGEND**
- Project Location**
- Turbine And Number
  - Turbine Blade Limit
  - Overhead Cable
  - Underground Cable - Directional Drill of Punch/Bore
  - Underground Cable - Trenched
  - Transmission Line
  - Substation
  - Switchyard and Hydro One Point of Interconnect
  - Temporary Storage / Laydown Area
  - Construction Field Offices and Temporary Storage
  - Access/Service Road
  - Meteorological Tower
  - 120m From Project Location
- OWES Wetland Type**
- Marsh
  - Swamp
- Ecological Land Classification**
- Cultural (CU)
  - Forest (FO)
  - Marsh (MA)
  - Open Aquatic (OA)
  - Swamp (SW)
- Significant Natural Features (known or candidate)**
- Known Natural Feature
  - Provincially Significant Wetland
  - Life Science ANSI
  - Earth Science ANSI
  - Valleyland
- Base Data**
- Community
  - Highway
  - Major Road
  - Local Road
  - Railway
  - Hydro One Transmission Line
  - Watercourse
  - Water (NRVIS)
  - Wetland (NRVIS)
  - Provincial Park
  - Conservation Area
  - Lot Boundary
  - Project Area



- REFERENCE**
1. Base Data - MNR NRVIS, obtained 2004, CANMAP v2008.4
  2. Imagery - FirstBase Solutions / Haldimand County, 2006.
  3. Natural Features compiled by Golden from NRVIS base data, NHC Natural Areas and MNR Wetland and ANSI data, obtained 2010
  4. Valleylands made from Haldimand County Hazardland data, obtained 2010

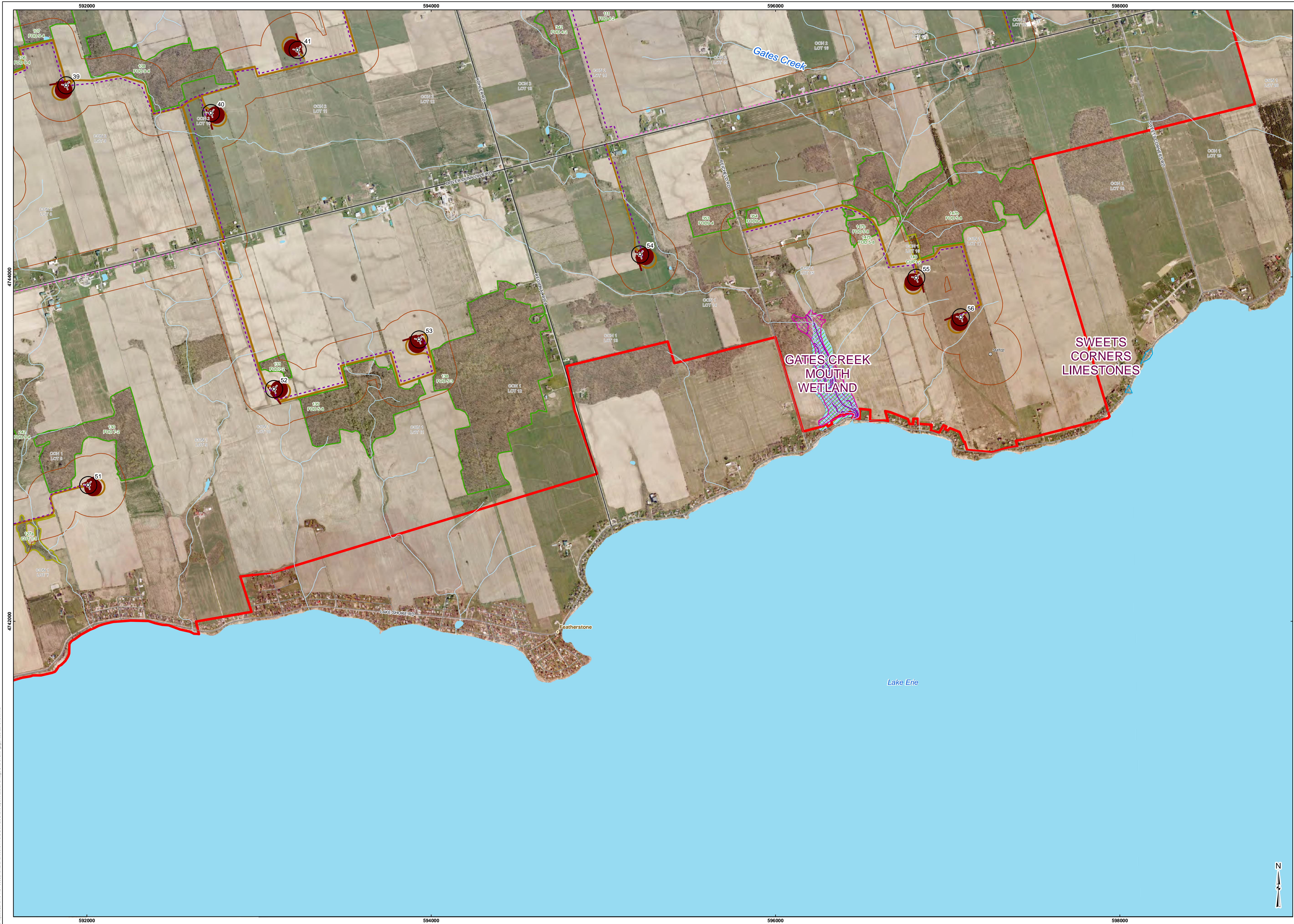
Produced by Golden Associates Ltd under licence from Ontario Ministry of Natural Resources, © Queens Printer 2010  
 Projection: Transverse Mercator Datum: NAD 83 Coordinate System: UTM Zone 17

0 50 100 200 300 400 500  
 SCALE 1:10,000 Metres

PROJECT	Summerhaven Wind Energy Centre
TITLE	SITE INVESTIGATIONS PLANNING
PROJECT NO.	10151-0005
DATE	15 Aug 2008
SCALE AS SHOWN	REV.
GS	FP
DATE	27 Jan 2011
DEVELOP	27 Jan 2011

**FIGURE 2f**





- LEGEND**
- Project Location**
- Turbine And Number
  - Turbine Blade Limit
  - Overhead Cable
  - Underground Cable - Directional Drill of Punch/Bore
  - Underground Cable - Trenched
  - Transmission Line
  - Substation
  - Switchyard and Hydro One Point of Interconnect
  - Temporary Storage / Laydown Area
  - Construction Field Offices and Temporary Storage
  - Access/Service Road
  - Meteorological Tower
  - 120m From Project Location
- OWES Wetland Type**
- Marsh
  - Swamp
- Ecological Land Classification**
- Cultural (CU)
  - Forest (FO)
  - Marsh (MA)
  - Open Aquatic (OA)
  - Swamp (SW)
- Significant Natural Features (known or candidate)**
- Known Natural Feature
  - Provincially Significant Wetland
  - Life Science ANSI
  - Earth Science ANSI
  - Valleyland
- Base Data**
- Community
  - Highway
  - Major Road
  - Local Road
  - Railway
  - Hydro One Transmission Line
  - Watercourse
  - Water (NRVIS)
  - Wetland (NRVIS)
  - Provincial Park
  - Conservation Area
  - Lot Boundary
  - Project Area



**REFERENCE**

- Base Data - MNR NRVIS, obtained 2004, CANMAP v2008.4
- Imagery - FirstBase Solutions / Haldimand County, 2006.
- Natural Features compiled by Goldier from NRVIS base data, NHC Natural Areas and MNR Wetland and ANSI data, obtained 2010
- Valleylands made from Haldimand County Hazardland data, obtained 2010

Produced by Goldier Associates Ltd under licence from  
 Ontario Ministry of Natural Resources, © Queens Printer 2010  
 Projection: Transverse Mercator Datum: NAD 83 Coordinate System: UTM Zone 17

0 50 100 200 300 400 500  
 Metres

SCALE 1:10,000

**PROJECT**  
 Summerhaven Wind Energy Centre

**TITLE**  
 SITE INVESTIGATIONS PLANNING

**Goldier ASSOCIATES**  
 Mississauga, Ontario

PROJECT NO. 10151-0015  
 SCALE AS SHOWN  
 REV. 27 JAN 2011

FIGURE: 2g