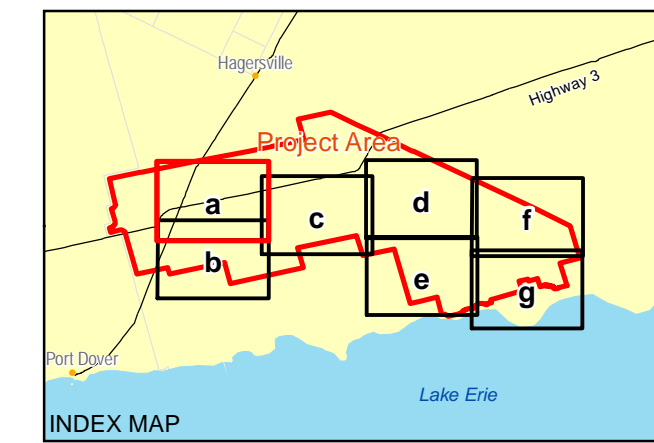


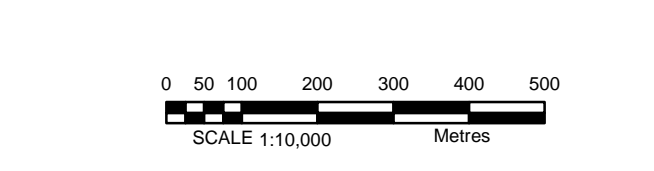
- LEGEND**
- Project Location**
- Turbine And Number
  - Turbine Blade Limit
  - Overhead Cable
  - Underground Cable - Directional Drill of Punch/Bore
  - Underground Cable - Trenched
  - Transmission Line
  - Substation
  - Switchyard and Hydro One Point of Interconnect
  - Temporary Storage / Laydown Area
  - Construction Field Offices and Temporary Storage
  - Access/Service Road
  - Meteorological Tower
  - 120m From Project Location
- OWES Wetland Type**
- Marsh
  - Swamp
- Ecological Land Classification**
- Cultural (CU)
  - Forest (FO)
  - Marsh (MA)
  - Open Aquatic (OA)
  - Swamp (SW)
- Significant Natural Features (known or candidate)**
- Known Natural Feature
  - Provincially Significant Wetland
  - Life Science ANSI
  - Earth Science ANSI
  - Valleyland
- Base Data**
- Community
  - Highway
  - Major Road
  - Local Road
  - Railway
  - Hydro One Transmission Line
  - Watercourse
  - Water (NRVIS)
  - Wetland (NRVIS)
  - Provincial Park
  - Conservation Area
  - Lot Boundary
  - Project Area



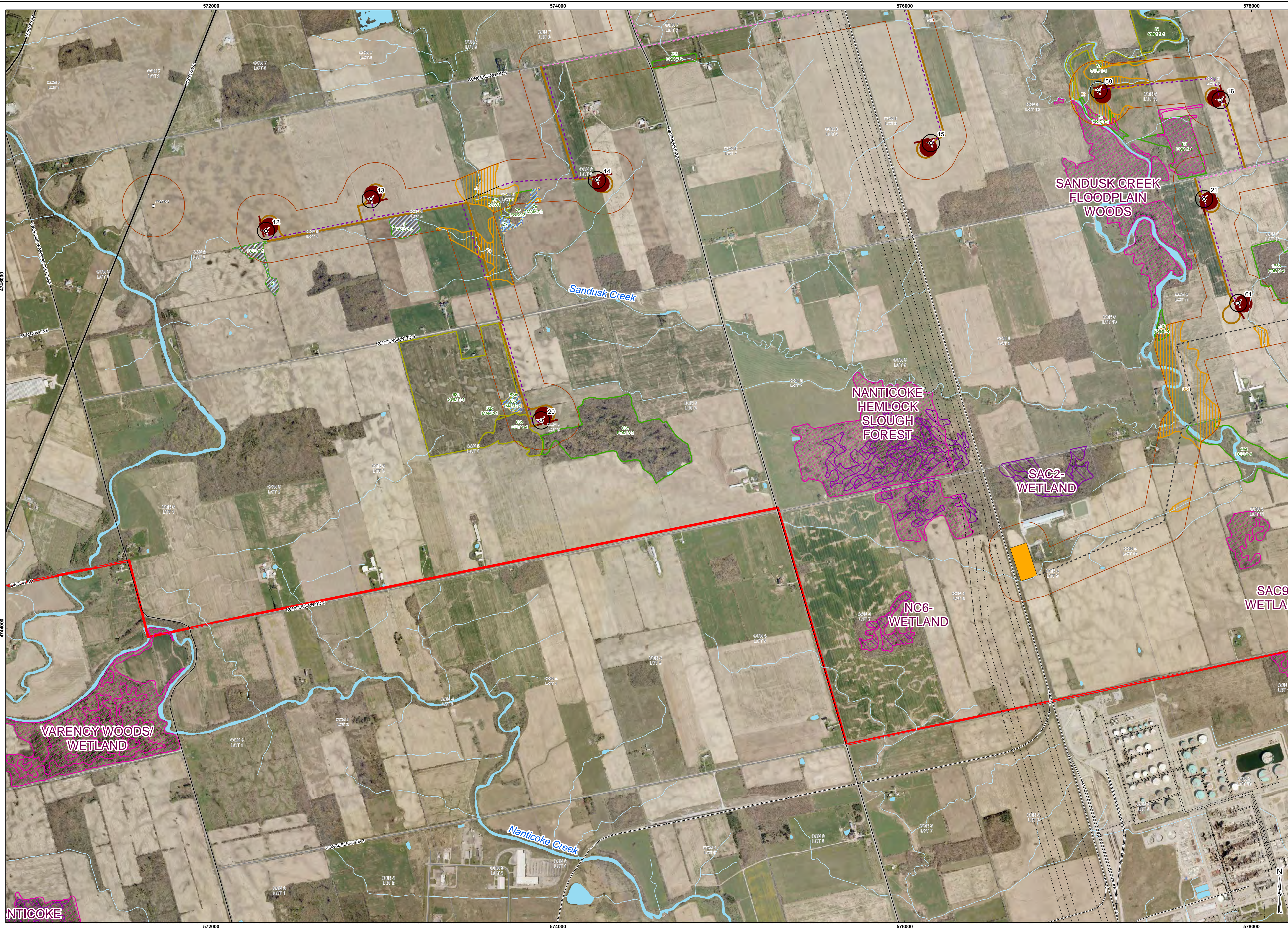
**REFERENCE**

1. Base Data - MNR NRVIS, obtained 2004, CANMAP v2008.4
2. Imagery - FirstBase Solutions / Haldimand County, 2006.
3. Natural Features compiled by Golden from NRVIS base data, NHC Natural Areas and MNR Wetland and ANSI data, obtained 2010
4. Valleylands made from Haldimand County Hazardland data, obtained 2010

Produced by Golden Associates Ltd under licence from Ontario Ministry of Natural Resources, © Queens Printer 2010  
 Projection: Transverse Mercator Datum: NAD 83 Coordinate System: UTM Zone 17



PROJECT	Summerhaven Wind Energy Centre																				
TITLE	SITE INVESTIGATIONS PLANNING																				
	<table border="1"> <tr> <td>PROJECT NO.</td> <td>10151-0005</td> <td>SCALE AS SHOWN</td> <td>REV.</td> </tr> <tr> <td>DATE</td> <td>15 May 2008</td> <td></td> <td></td> </tr> <tr> <td>DESIGNER</td> <td>PP</td> <td>27 Jan 2011</td> <td></td> </tr> <tr> <td>CHECKER</td> <td>PP</td> <td>27 Jan 2011</td> <td></td> </tr> <tr> <td>APPROVER</td> <td>PP</td> <td>27 Jan 2011</td> <td></td> </tr> </table>	PROJECT NO.	10151-0005	SCALE AS SHOWN	REV.	DATE	15 May 2008			DESIGNER	PP	27 Jan 2011		CHECKER	PP	27 Jan 2011		APPROVER	PP	27 Jan 2011	
PROJECT NO.	10151-0005	SCALE AS SHOWN	REV.																		
DATE	15 May 2008																				
DESIGNER	PP	27 Jan 2011																			
CHECKER	PP	27 Jan 2011																			
APPROVER	PP	27 Jan 2011																			
	FIGURE: 2a																				



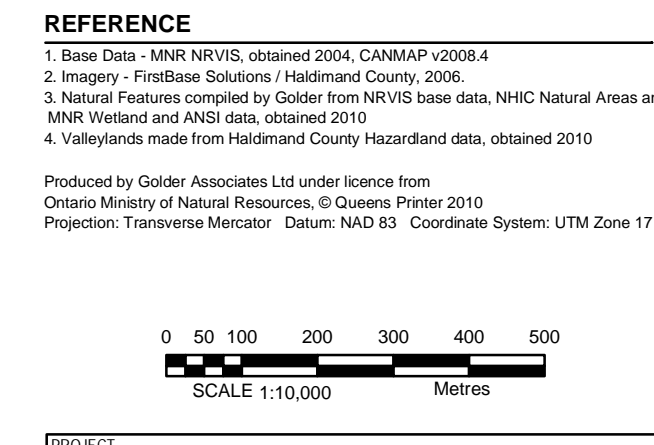
- LEGEND**
- Project Location**
- Turbine And Number
  - Turbine Blade Limit
  - Overhead Cable
  - Underground Cable - Directional Drill of Punch/Bore
  - Underground Cable - Trenched
  - Transmission Line
  - Substation
  - Switchyard and Hydro One Point of Interconnect
  - Temporary Storage / Laydown Area
  - Construction Field Offices and Temporary Storage
  - Access/Service Road
  - Meteorological Tower
  - 120m From Project Location
- OWES Wetland Type**
- Marsh
  - Swamp
- Ecological Land Classification**
- Cultural (CU)
  - Forest (FO)
  - Marsh (MA)
  - Open Aquatic (OA)
  - Swamp (SW)
- Significant Natural Features (known or candidate)**
- Known Natural Feature
  - Provincially Significant Wetland
  - Life Science ANSI
  - Earth Science ANSI
  - Valleyland
- Base Data**
- Community
  - Highway
  - Major Road
  - Local Road
  - Railway
  - Hydro One Transmission Line
  - Watercourse
  - Water (NRVIS)
  - Wetland (NRVIS)
  - Provincial Park
  - Conservation Area
  - Lot Boundary
  - Project Area



**REFERENCE**

1. Base Data - MNR NRVIS, obtained 2004, CANMAP v2008.4
2. Imagery - FirstBase Solutions / Haldimand County, 2006.
3. Natural Features compiled by Golden from NRVIS base data, NHC Natural Areas and MNR Wetland and ANSI data, obtained 2010
4. Valleylands made from Haldimand County Hazardland data, obtained 2010

Produced by Golden Associates Ltd under licence from Ontario Ministry of Natural Resources, © Queens Printer 2010  
 Projection: Transverse Mercator Datum: NAD 83 Coordinate System: UTM Zone 17



PROJECT: Summerhaven Wind Energy Centre

TITLE: SITE INVESTIGATIONS PLANNING

PROJECT NO. 10151-0005 SCALE AS SHOWN REV. 1

DATE: 27 Jan 2011

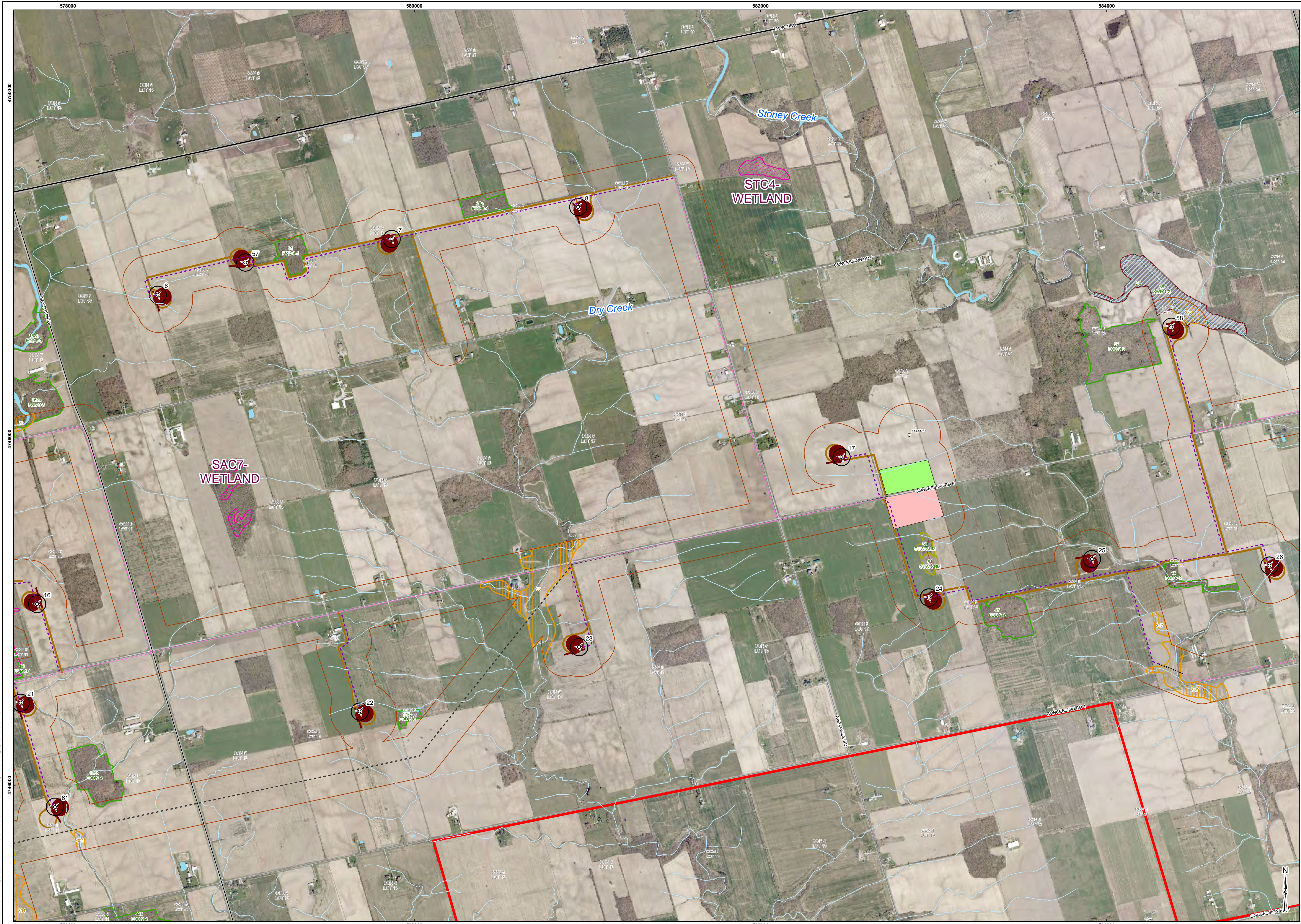
DATE: 27 Jan 2011

DATE: 27 Jan 2011

DATE: 27 Jan 2011

**FIGURE: 2b**

© Project 2011 10151-0005 Nanticoke Hemlock Slough Forest and Wetland Data, Records Review and



**LEGEND**

**Project Location**

- Turbine And Number
- Turbine Blade Limit
- Overhead Cable
- Underground Cable - Directional Drill of Punch/Bore
- Underground Cable - Trenched
- Transmission Line
- Substation
- Switchyard and Hydro One Point of Interconnect
- Temporary Storage / Laydown Area
- Construction Field Offices and Temporary Storage
- Access/Service Road
- Meteorological Tower
- 120m From Project Location

**OWES Wetland Type**

- Marsh
- Swamp

**Ecological Land Classification**

- Cultural (CU)
- Forest (FO)
- Marsh (MA)
- Open Aquatic (OA)
- Swamp (SW)

**Significant Natural Features (known or candidate)**

- Known Natural Feature
- Provincially Significant Wetland
- Life Science ANSI
- Earth Science ANSI
- Valleyland

**Base Data**

- Community
- Highway
- Major Road
- Local Road
- Railway
- Hydro One Transmission Line
- Watercourse
- Water (NRVIS)
- Wetland (NRVIS)
- Provincial Park
- Conservation Area
- Lot Boundary
- Project Area

**INDEX MAP**

**REFERENCE**

- Base Data - MNR NRVIS, obtained 2004, CANMAP v2008.4
- Imagery - FirstBase Solutions / Haldimand County, 2006.
- Natural Features compiled by Golden from NRVIS base data, NHC Natural Areas and MNR Wetland and ANSI data, obtained 2010
- Valleylands made from Haldimand County Hazardland data, obtained 2010

Produced by Golden Associates Ltd under licence from Ontario Ministry of Natural Resources, © Queens Printer 2010  
Projection: Transverse Mercator Datum: NAD 83 Coordinate System: UTM Zone 17

0 50 100 200 300 400 500  
SCALE 1:10,000  
Metres

**PROJECT**  
Summerhaven Wind Energy Centre

**TITLE**  
SITE INVESTIGATIONS PLANNING

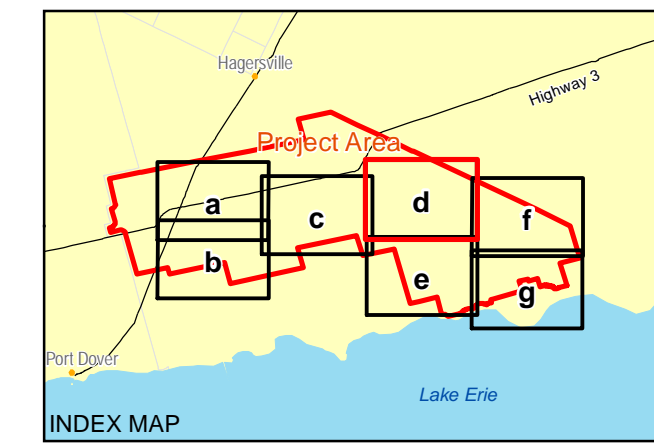
**Golden ASSOCIATES**  
Mississauga, Ontario

PROJECT NO. 10151-0015  
SCALE AS SHOWN  
REV.  
DATE  
27 JAN 2011  
27 JAN 2011  
27 JAN 2011

**FIGURE: 2c**



- LEGEND**
- Project Location**
- Turbine And Number
  - Turbine Blade Limit
  - Underground Cable - Directional Drill of Punch/Bore
  - Underground Cable - Trenched
  - Transmission Line
  - Substation
  - Switchyard and Hydro One Point of Interconnect
  - Temporary Storage / Laydown Area
  - Construction Field Offices and Temporary Storage
  - Access/Service Road
  - Meteorological Tower
  - 120m From Project Location
- OWES Wetland Type**
- Marsh
  - Swamp
- Ecological Land Classification**
- Cultural (CU)
  - Forest (FO)
  - Marsh (MA)
  - Open Aquatic (OA)
  - Swamp (SW)
- Significant Natural Features (known or candidate)**
- Known Natural Feature
  - Provincially Significant Wetland
  - Life Science ANSI
  - Earth Science ANSI
  - Valleyland
- Base Data**
- Community
  - Highway
  - Major Road
  - Local Road
  - Railway
  - Hydro One Transmission Line
  - Watercourse
  - Water (NRVIS)
  - Wetland (NRVIS)
  - Provincial Park
  - Conservation Area
  - Lot Boundary
  - Project Area



**REFERENCE**

1. Base Data - MNR NRVIS, obtained 2004, CANMAP v2008.4
2. Imagery - FirstBase Solutions / Haldimand County, 2006.
3. Natural Features compiled by Golden from NRVIS base data, NHC Natural Areas and MNR Wetland and ANSI data, obtained 2010
4. Valleylands made from Haldimand County Hazardland data, obtained 2010

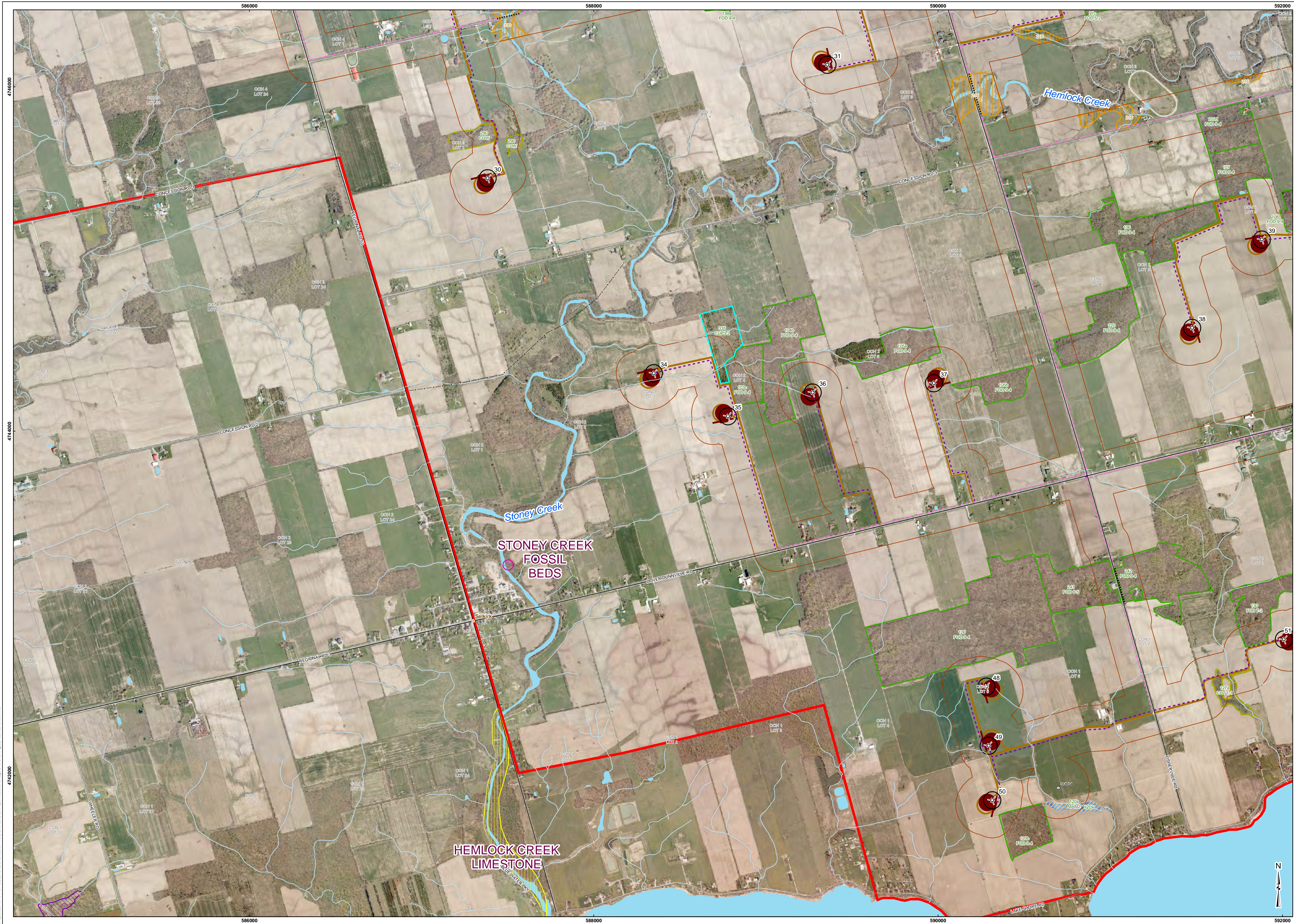
Produced by Golden Associates Ltd under licence from Ontario Ministry of Natural Resources, © Queens Printer 2010  
 Projection: Transverse Mercator Datum: NAD 83 Coordinate System: UTM Zone 18

0 50 100 200 300 400 500  
 SCALE 1:10,000 Metres

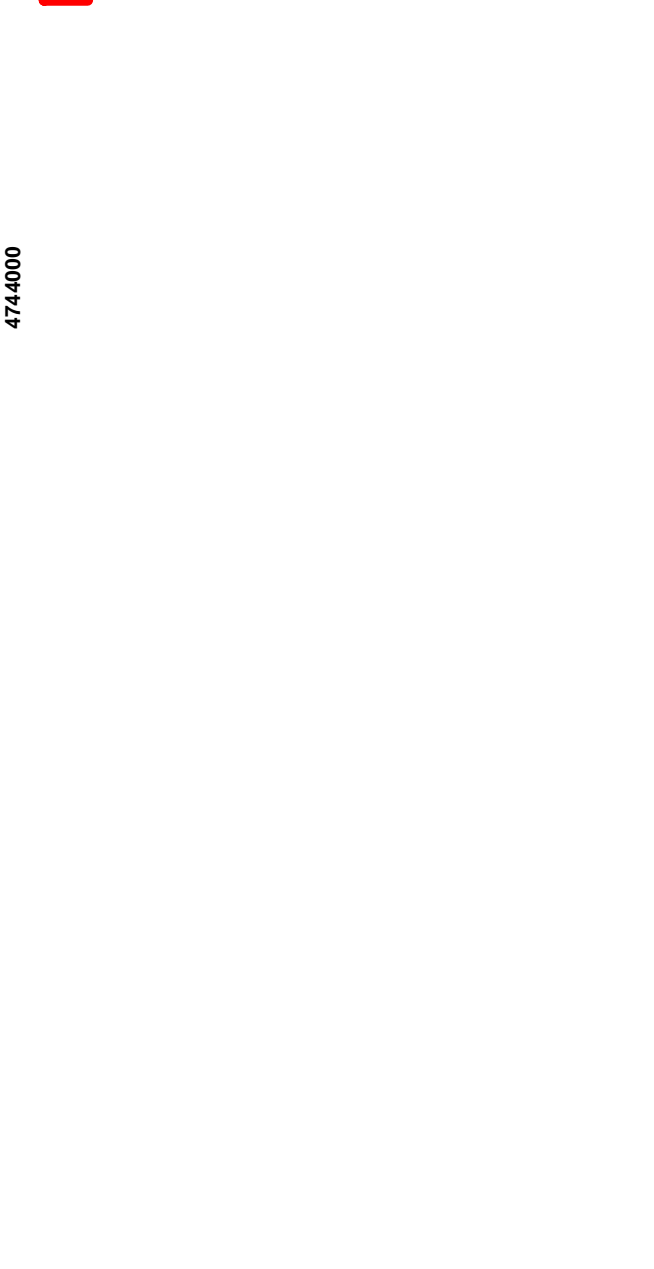
PROJECT: Summerhaven Wind Energy Centre  
 TITLE: SITE INVESTIGATIONS PLANNING

PROJECT NO. 1015-0015	SCALE AS SHOWN	REV.
DATE: 11 May 2010		
CS: 27 Jan 2011		
DESIGN: 27 Jan 2011		
REVISION: 27 Jan 2011		

**FIGURE: 2d**



- LEGEND**
- Project Location**
- Turbine And Number
  - Turbine Blade Limit
  - Overhead Cable
  - Underground Cable - Directional Drill of Punch/Bore
  - Underground Cable - Trenched
  - Transmission Line
  - Substation
  - Switchyard and Hydro One Point of Interconnect
  - Temporary Storage / Laydown Area
  - Construction Field Offices and Temporary Storage
  - Access/Service Road
  - Meteorological Tower
  - 120m From Project Location
- OWES Wetland Type**
- Marsh
  - Swamp
- Ecological Land Classification**
- Cultural (CU)
  - Forest (FO)
  - Marsh (MA)
  - Open Aquatic (OA)
  - Swamp (SW)
- Significant Natural Features (known or candidate)**
- Known Natural Feature
  - Provincially Significant Wetland
  - Life Science ANSI
  - Earth Science ANSI
  - Valleyland
- Base Data**
- Community
  - Highway
  - Major Road
  - Local Road
  - Railway
  - Hydro One Transmission Line
  - Watercourse
  - Water (NRVIS)
  - Wetland (NRVIS)
  - Provincial Park
  - Conservation Area
  - Lot Boundary
  - Project Area



**REFERENCE**

1. Base Data - MNR NRVIS, obtained 2004, CANMAP v2008.4
2. Imagery - FirstBase Solutions / Halton County, 2006.
3. Natural Features compiled by Golden from NRVIS base data, NHC Natural Areas and MNR Wetland and ANSI data, obtained 2010
4. Valleylands made from Halton County Hazardland data, obtained 2010

Produced by Golden Associates Ltd under licence from Ontario Ministry of Natural Resources, © Queens Printer 2010  
 Projection: Transverse Mercator Datum: NAD 83 Coordinate System: UTM Zone 17

0 50 100 200 300 400 500  
 SCALE 1:10,000  
 Metres

**PROJECT**  
 Summerhaven Wind Energy Centre

**TITLE**  
 SITE INVESTIGATIONS PLANNING

**FIGURE: 2e**

PROJECT NO. 10151-0010	SCALE AS SHOWN	REV.
DATE: 11 May 2008		
GS: RP	27 Jan 2011	
DEVELOP: 201	27 Jan 2011	

© Project 2010 10151-0010. Name: E:\Projects\10151-0010\Drawings\SiteInvestigations\SiteInvestigations.mxd, Records/Review.mxd  
 474000 474000 474000 474000