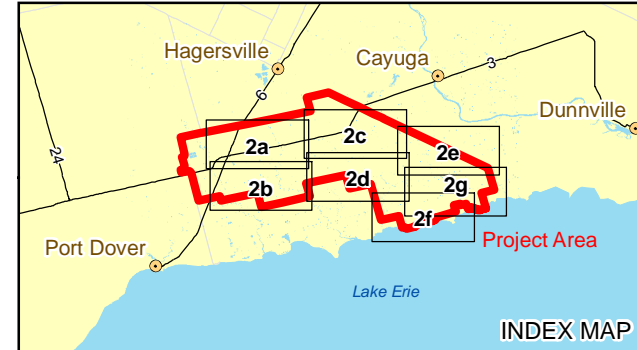
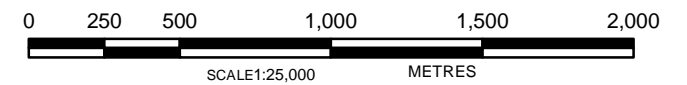


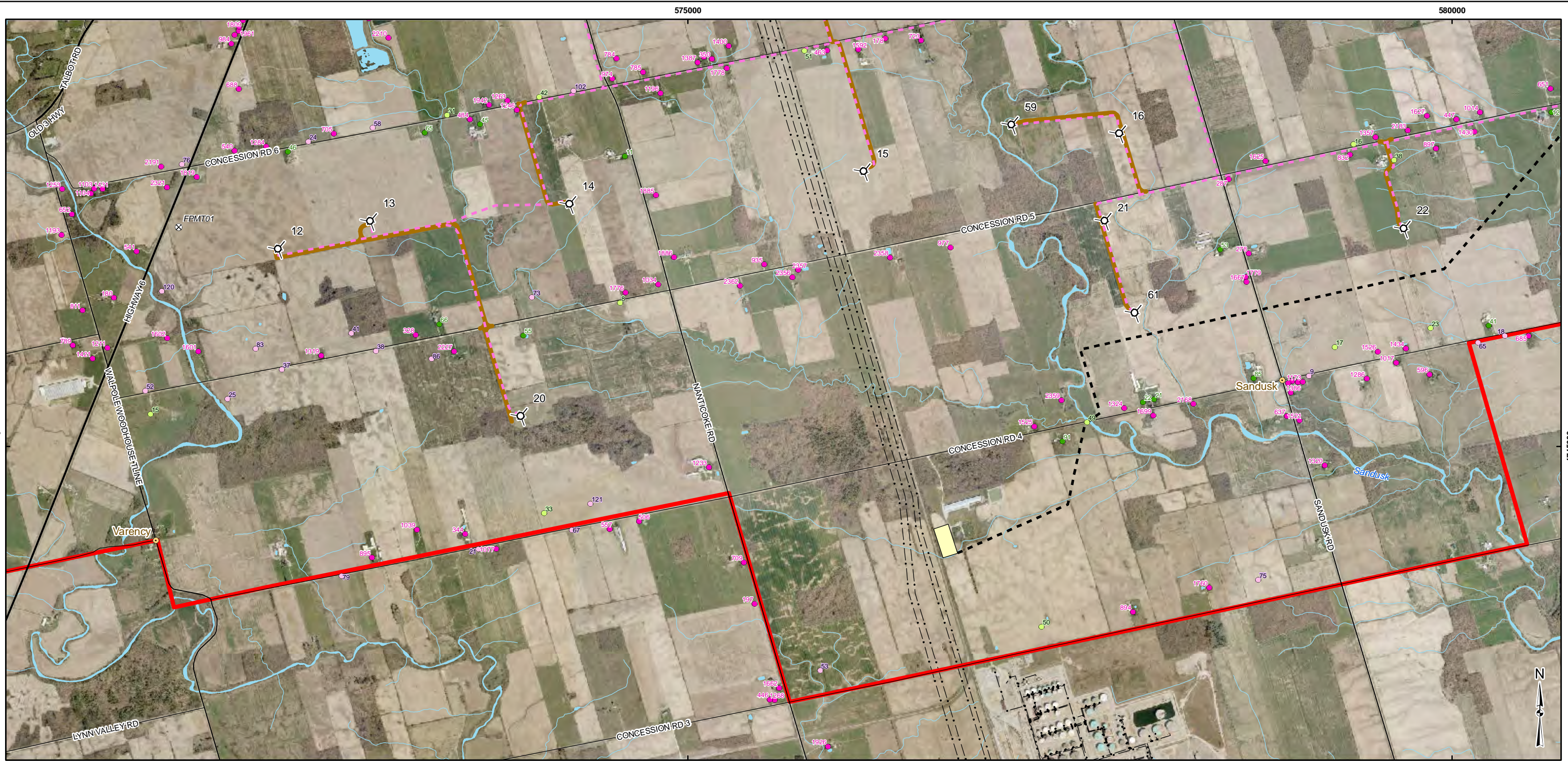
- LEGEND**
- Turbine Location
 - Point of Reception
 - Participating Receptor
 - Vacant Point of Reception
 - Vacant Participating Receptor
 - Meteorological Tower
 - Cable
 - Transmission Line
 - Project Area
 - Substation
 - Point of Interconnect/Switchyard
 - Office
 - Access Road
 - Community
 - Hydro One Transmission Line
 - Highway
 - Regional Road
 - Local Road
 - Watercourse
 - Wetland
 - Waterbody

REFERENCE
 Base Data - MNR NRVIS, obtained 2004, CANMAP v2008.4
 Imagery - First Base Solutions & Haldimand County, flown 2006
 Produced by Golder Associates Ltd under licence from Ontario Ministry of Natural Resources, © Queens Printer 2010
 Projection: UTM Datum: NAD 83 Coordinate System: UTM Zone 17



PROJECT	Summerhaven Wind Energy Centre		
TITLE	NOISE MODELING RECEPTORS		
 Golder Associates Mississauga, Ontario	PROJECT NO. 10-1151-0035	SCALE AS SHOWN	REV.
	DESIGN JR 27 Aug. 2010		
	GIS ME 3 Aug. 2011		
	CHECK PP/JS 3 Aug. 2011		
REVIEW JT 3 Aug. 2011			FIGURE: 2a

G:\Projects\2010\10-1151-0035_NextEraNanticoke\Wind\GIS\MXD\Draft\Report\Noise\ReceptorMapA.mxd

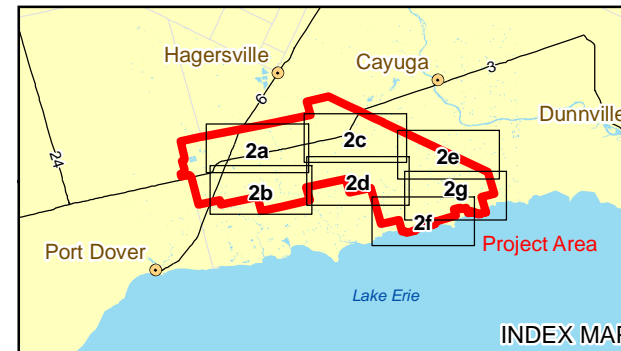
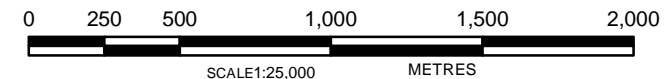


LEGEND

- Turbine Location
- Point of Reception
- Participating Receptor
- Vacant Point of Reception
- Vacant Participating Receptor
- Meteorological Tower
- Cable
- Transmission Line
- Project Area
- Substation
- Point of Interconnect/Switchyard
- Office
- Access Road
- Community
- Hydro One Transmission Line
- Highway
- Regional Road
- Local Road
- Watercourse
- Wetland
- Waterbody

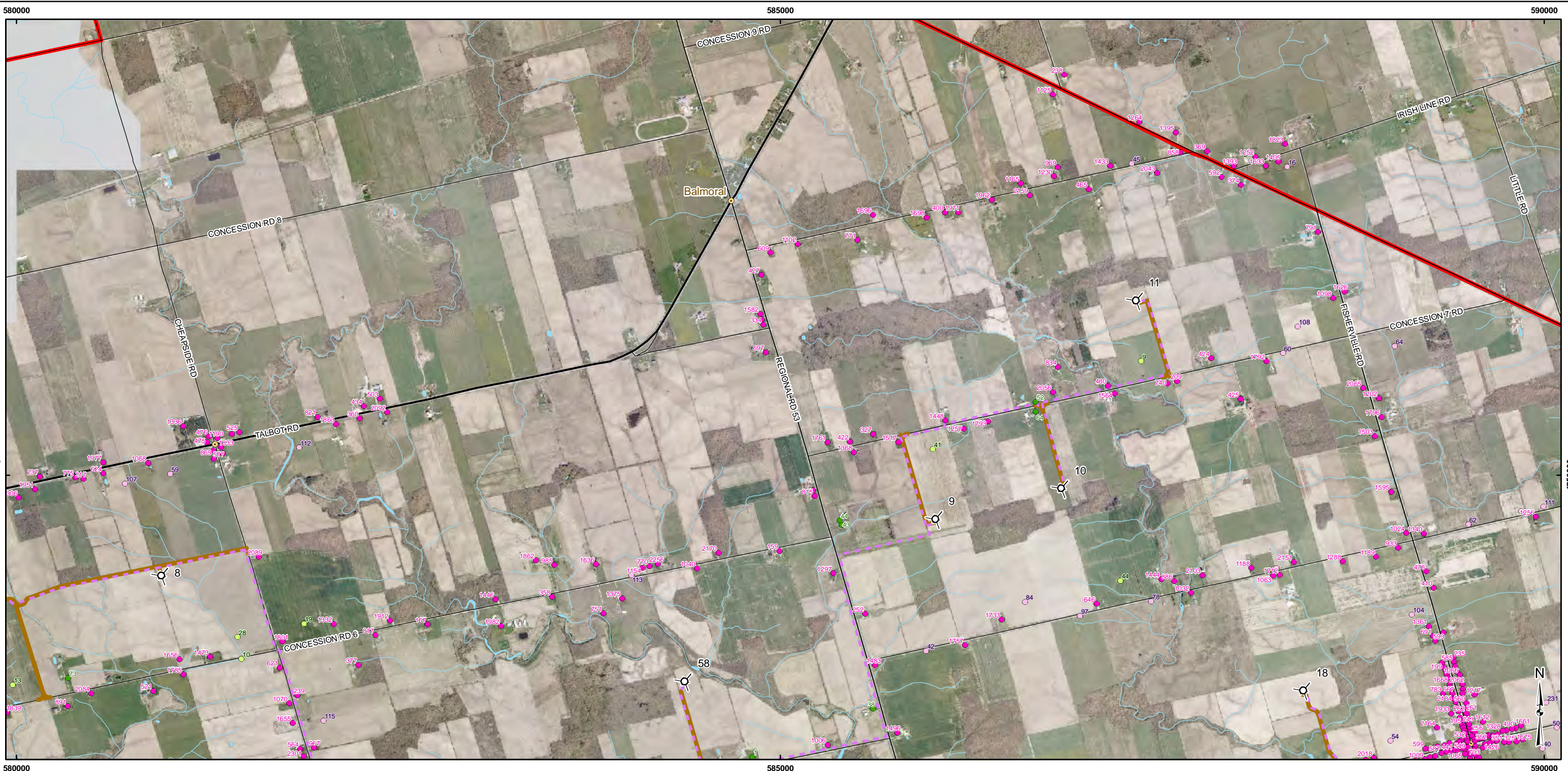
REFERENCE

Base Data - MNR NRVIS, obtained 2004, CANMAP v2008.4
 Imagery - First Base Solutions & Haldimand County, flown 2006
 Produced by Golder Associates Ltd under licence from Ontario Ministry of Natural Resources, © Queens Printer 2010
 Projection: UTM Datum: NAD 83 Coordinate System: UTM Zone 17



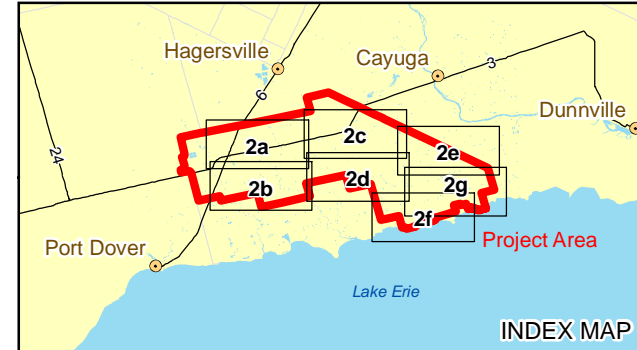
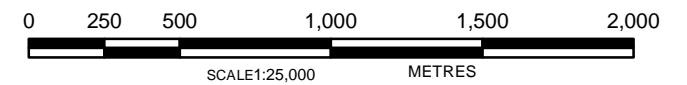
PROJECT	Summerhaven Wind Energy Centre		
TITLE	NOISE MODELING RECEPTORS		
 Golder Associates Mississauga, Ontario	PROJECT NO.	10-1151-0035	SCALE AS SHOWN
	DESIGN	JR 27 Aug. 2010	REV.
	GIS	ME 3 Aug. 2011	
	CHECK	PP/SI 3 Aug. 2011	
	REVIEW	JT 3 Aug. 2011	
			FIGURE: 2b

G:\Projects\2010\10-1151-0035_NextEraNaticoke\Wind\GIS\MXDs\Draft\Report\Noise\ReceptorMapB.mxd



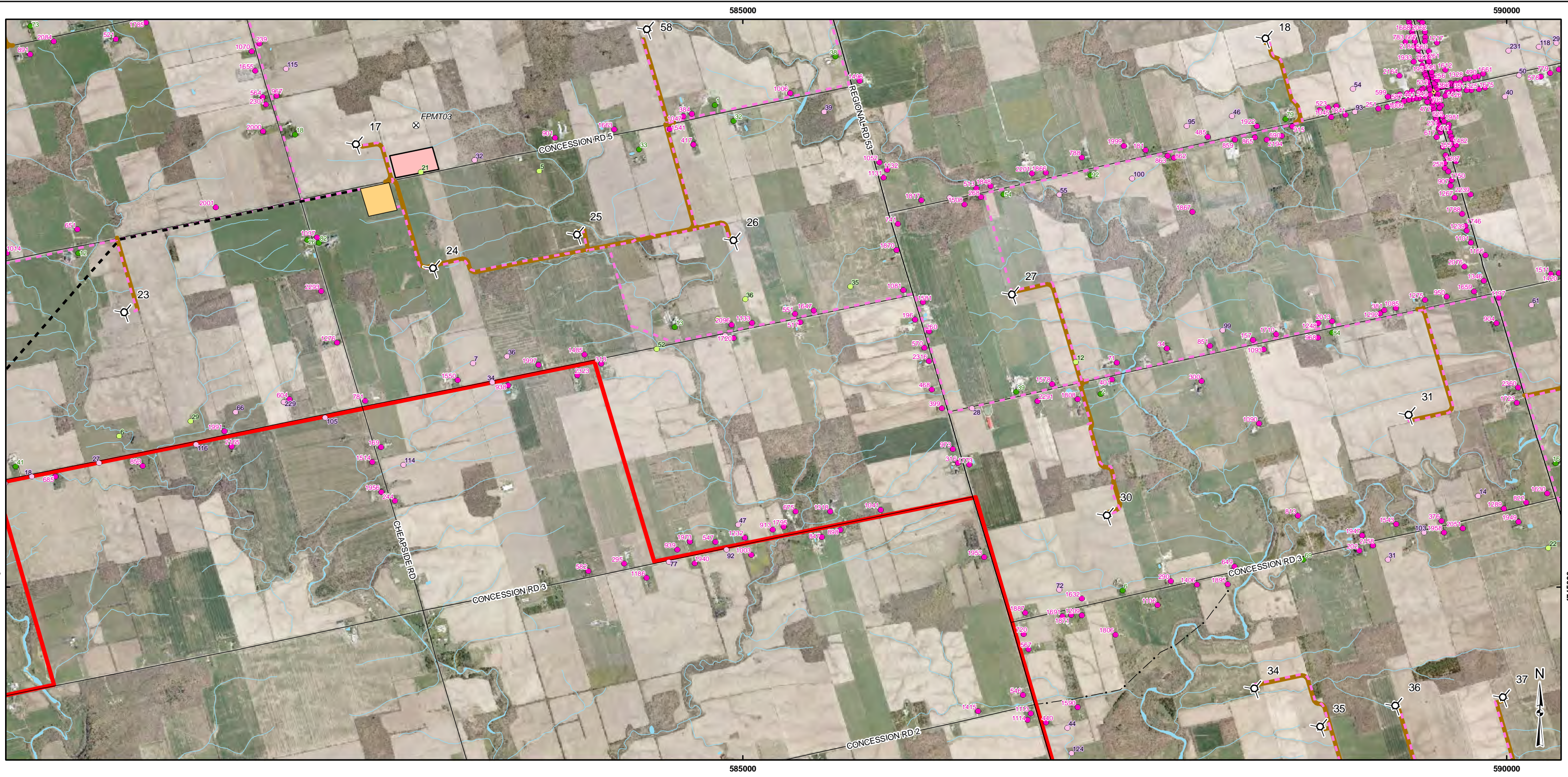
- LEGEND**
- Turbine Location
 - Point of Reception
 - Participating Receptor
 - Vacant Point of Reception
 - Vacant Participating Receptor
 - Meteorological Tower
 - Cable
 - Transmission Line
 - Project Area
 - Substation
 - Office
 - Access Road
 - Community
 - Hydro One Transmission Line
 - Highway
 - Regional Road
 - Local Road
 - Watercourse
 - Wetland
 - Waterbody

REFERENCE
 Base Data - MNR NRVIS, obtained 2004, CANMAP v2008.4
 Imagery - First Base Solutions & Haldimand County, flown 2006
 Produced by Golder Associates Ltd under licence from Ontario Ministry of Natural Resources, © Queens Printer 2010
 Projection: UTM Datum: NAD 83 Coordinate System: UTM Zone 17



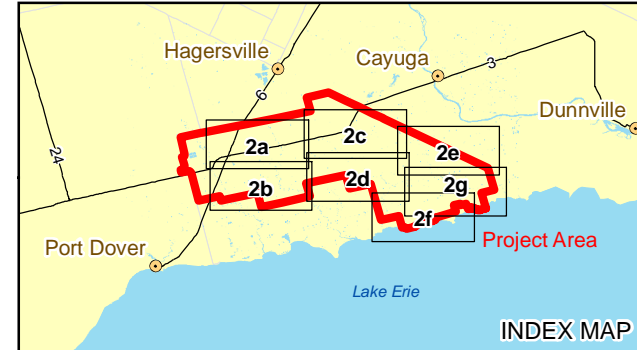
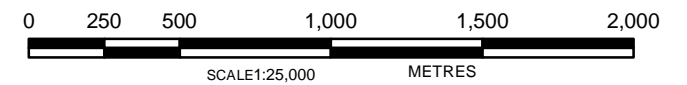
PROJECT	Summerhaven Wind Energy Centre		
TITLE	NOISE MODELING RECEPTORS		
 Golder Associates Mississauga, Ontario	PROJECT NO.	10-1151-0035	SCALE AS SHOWN
	DESIGN	JR 27 Aug. 2010	REV.
	GIS	ME 3 Aug. 2011	FIGURE: 2c
	CHECK	PP/SI 3 Aug. 2011	
REVIEW	JT 3 Aug. 2011		

G:\Projects\2010\10-1151-0035_NextEraNaticoke\Wind\GIS\MXD\Draft\Report\Noise\ReceptorMapC.mxd



- LEGEND**
- Turbine Location
 - Point of Reception
 - Participating Receptor
 - Vacant Point of Reception
 - Vacant Participating Receptor
 - Meteorological Tower
 - Cable
 - Transmission Line
 - Project Area
 - Substation
 - Office
 - Point Of Interconnect/Switchyard
 - Access Road
 - Community
 - Hydro One Transmission Line
 - Highway
 - Regional Road
 - Local Road
 - Watercourse
 - Wetland
 - Waterbody

REFERENCE
 Base Data - MNR NRVIS, obtained 2004, CANMAP v2008.4
 Imagery - First Base Solutions & Haldimand County, flown 2006
 Produced by Golder Associates Ltd under licence from Ontario Ministry of Natural Resources, © Queens Printer 2010
 Projection: UTM Datum: NAD 83 Coordinate System: UTM Zone 17

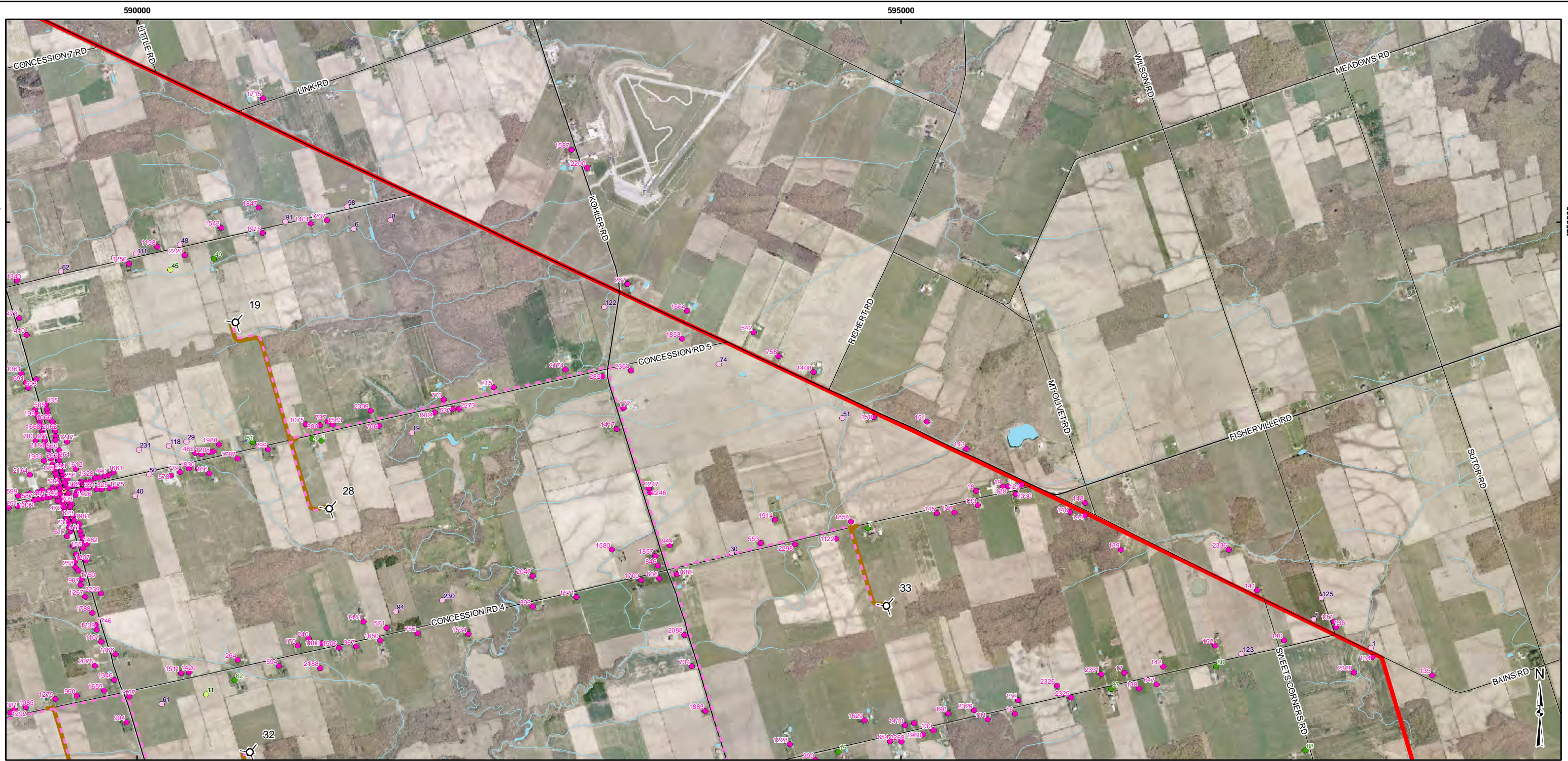


PROJECT		Summerhaven Wind Energy Centre	
TITLE		NOISE MODELING RECEPTORS	
PROJECT NO. 10-1151-0035	SCALE AS SHOWN	REV.	
DESIGN JR 27 Aug. 2010			
GIS ME 3 Aug. 2011			
CHECK PP/SI 3 Aug. 2011			
REVIEW JT 3 Aug. 2011			

FIGURE: 2d

Golder Associates
Mississauga, Ontario

G:\Projects\2010\10-1151-0035_NextEraNaticoke\Wind\GIS\MXD\Draft\Report\Noise\ReceptorMapD.mxd

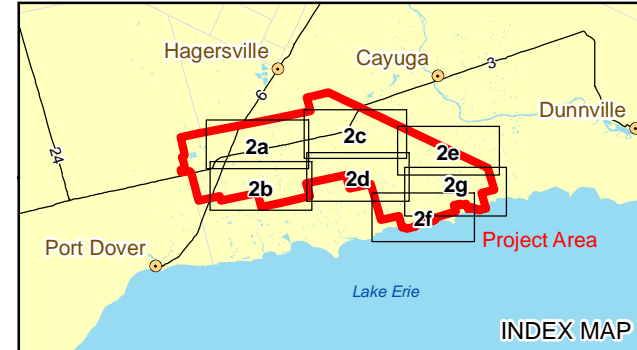
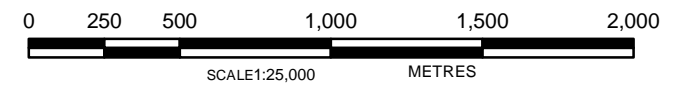


LEGEND

- Turbine Location
- Point of Reception
- Participating Receptor
- Vacant Point of Reception
- Vacant Participating Receptor
- Meteorological Tower
- Cable
- Transmission Line
- Project Area
- Substation
- Point Of Interconnect/Switchyard
- Access Road
- Community
- Hydro One Transmission Line
- Highway
- Regional Road
- Local Road
- Watercourse
- Wetland
- Waterbody

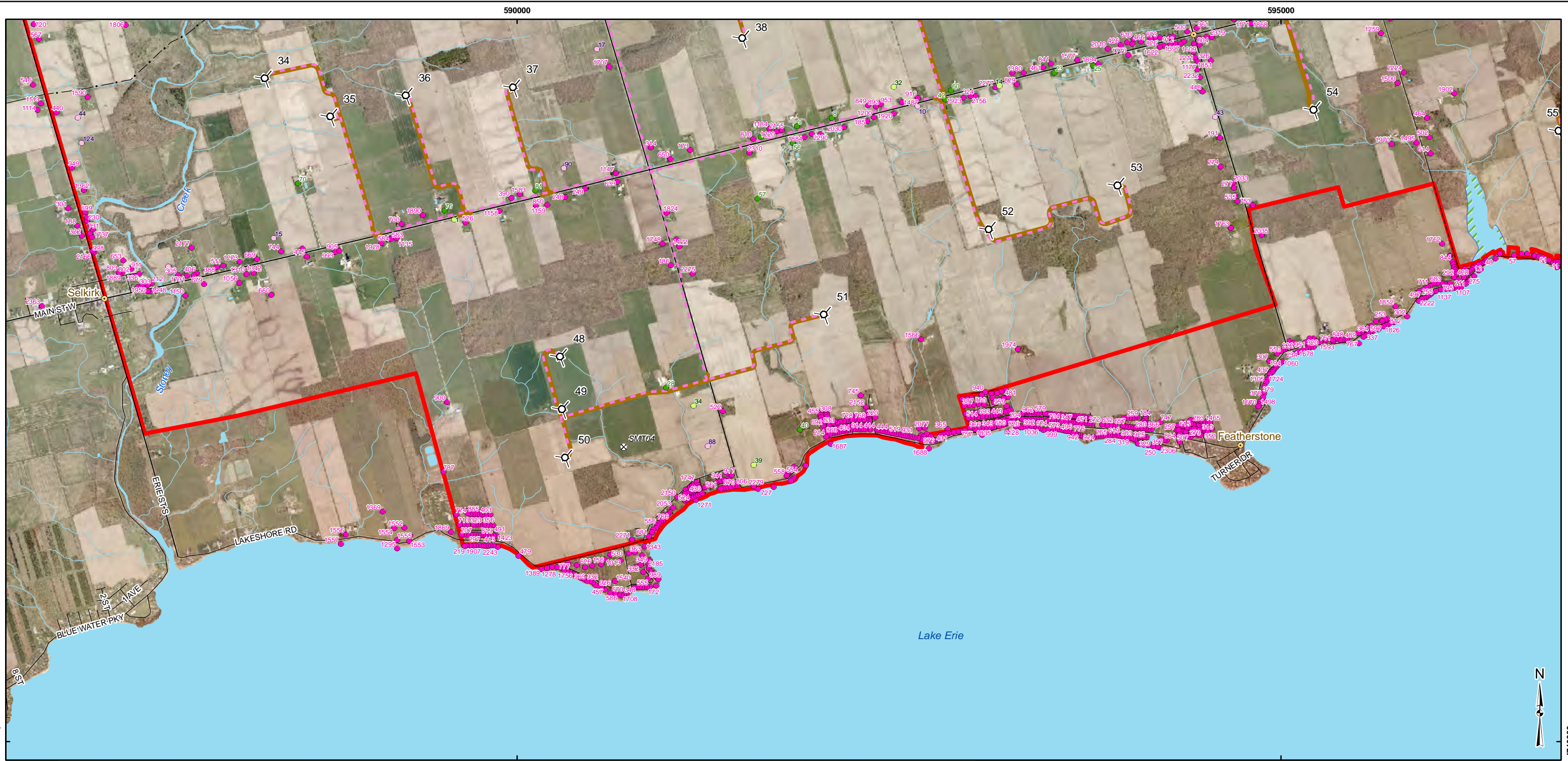
REFERENCE

Base Data - MNR NRVIS, obtained 2004, CANMAP v2008.4
 Imagery - First Base Solutions & Haldimand County, flown 2006
 Produced by Golder Associates Ltd under licence from Ontario Ministry of Natural Resources, © Queens Printer 2010
 Projection: UTM Datum: NAD 83 Coordinate System: UTM Zone 17



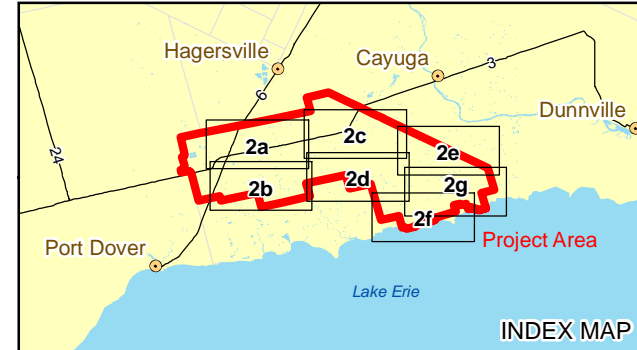
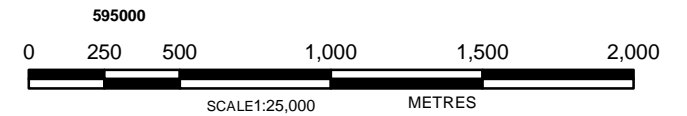
PROJECT	Summerhaven Wind Energy Centre		
TITLE	NOISE MODELING RECEPTORS		
 Golder Associates Mississauga, Ontario	PROJECT NO. 10-1151-0035	SCALE AS SHOWN	REV.
	DESIGN JR 27 Aug. 2010		
	GIS ME 3 Aug. 2011		
	CHECK PPS/JT 3 Aug. 2011		
	REVIEW JT 3 Aug. 2011		
FIGURE: 2e			

G:\Projects\2010\10-1151-0035_NextEraNaticoke\Wind\GIS\MXDs\Draft\Report\Noise\ReceptorMapE.mxd



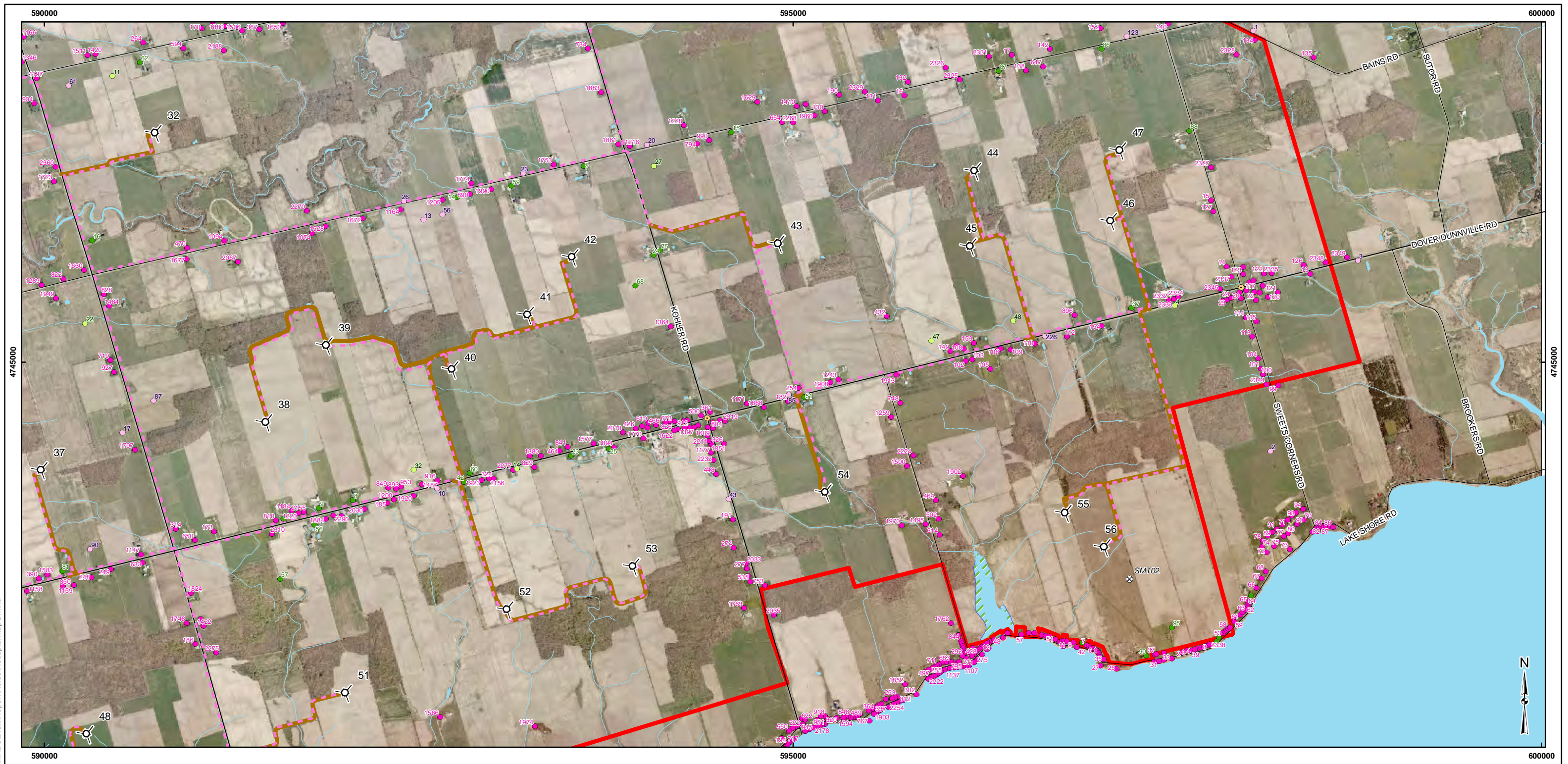
- LEGEND**
- Turbine Location
 - Point of Reception
 - Participating Receptor
 - Vacant Point of Reception
 - Vacant Participating Receptor
 - Meteorological Tower
 - Cable
 - Transmission Line
 - Project Area
 - Substation
 - Office
 - Point Of Interconnect/Switchyard
 - Access Road
 - Community
 - Hydro One Transmission Line
 - Highway
 - Regional Road
 - Local Road
 - Watercourse
 - Wetland
 - Waterbody

REFERENCE
 Base Data - MNR NRVIS, obtained 2004, CANMAP v2008.4
 Imagery - First Base Solutions & Haldimand County, flown 2006
 Produced by Golder Associates Ltd under licence from Ontario Ministry of Natural Resources, © Queens Printer 2010
 Projection: UTM Datum: NAD 83 Coordinate System: UTM Zone 17



PROJECT	Summerhaven Wind Energy Centre		
TITLE	NOISE MODELING RECEPTORS		
 Golder Associates Mississauga, Ontario	PROJECT NO. 10-1151-0035	SCALE AS SHOWN	REV.
	DESIGN JR 27 Aug. 2010	 FIGURE: 2f	
	GIS ME 3 Aug. 2011		
	CHECK PP/SI 3 Aug. 2011		
REVIEW JT 3 Aug. 2011			

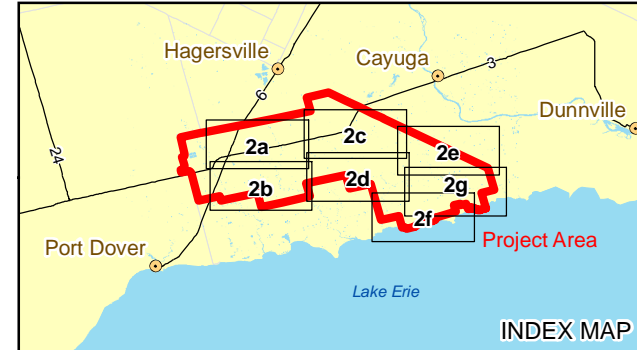
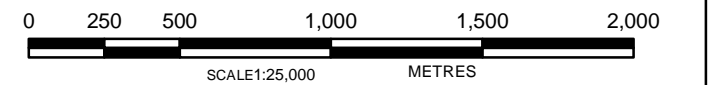
G:\Projects\2010\10-1151-0035_NextEraNaticoke\Wind\GIS\MXD\Draft\Report\Noise\ReceptorMapF.mxd



G:\Projects\2010\10-1151-0035_NextEraNaticoke\Wind\GIS\MXD\Draft\Report\Noise\ReceptorMapG.mxd

- LEGEND**
- Turbine Location
 - Cable
 - Transmission Line
 - Community
 - Point of Reception
 - Participating Receptor
 - Vacant Point of Reception
 - Vacant Participating Receptor
 - Meteorological Tower
 - Project Area
 - Substation
 - Office
 - Point Of Interconnect/Switchyard
 - Access Road
 - Hydro One Transmission Line
 - Highway
 - Regional Road
 - Local Road
 - Watercourse
 - Wetland
 - Waterbody

REFERENCE
 Base Data - MNR NRVIS, obtained 2004, CANMAP v2008.4
 Imagery - First Base Solutions & Haldimand County, flown 2006
 Produced by Golder Associates Ltd under licence from Ontario Ministry of Natural Resources, © Queens Printer 2010
 Projection: UTM Datum: NAD 83 Coordinate System: UTM Zone 17



PROJECT	Summerhaven Wind Energy Centre		
TITLE	NOISE MODELING RECEPTORS		
 Golder Associates Mississauga, Ontario	PROJECT NO.	10-1151-0035	SCALE AS SHOWN
	DESIGN	JR 27 Aug. 2010	REV.
	GIS	ME 3 Aug. 2011	
	CHECK	PP/SI 3 Aug. 2011	
	REVIEW	JT 3 Aug. 2011	
FIGURE: 2g			