

Summerhaven WIND ENERGY CENTRE NEWS

VOL. 2

SPRING 2012



WELCOME

In this newsletter, you will find the latest updates on Summerhaven Wind, LP, a wholly owned subsidiary of NextEra Energy Canada, ULC ("Summerhaven"), as well as details on the regulatory process and answers to some of the most commonly asked questions.

Since our last newsletter, there are two important updates we want to share with you, which are explained in further detail over the next couple of pages:

1. In March 2012, Ontario's Ministry of the Environment issued a Renewable Energy Approval (REA) for the Summerhaven Wind Energy Centre project.
2. Subsequently, three notices of public appeals were filed at the end of March, in accordance with the Environmental Bill of Rights Act. The formal process at the Environmental Review Tribunal has begun. One appeal was withdrawn by the appellant.

We are also very proud to have recently signed a Community Vibrancy Fund agreement with Haldimand County. Should all participants' proposed renewable energy projects proceed, this fund will contribute approximately \$40 million into Haldimand County over the next twenty years.

Wind is a safe and reliable energy source, however, we know that there are many complex issues that require ongoing consideration and discussion. We are committed to continuing to work closely with the public at large and the Haldimand community. **Your voice counts and your opinion matters** – we hope this and future newsletters provide valuable information, but we also encourage you to share any comments, questions or suggestions for topics you would like to see included in future newsletters.

Kind regards,

Ben Greenhouse
Director
Summerhaven Wind Energy Centre

CONTACT US

For more information or to contact us directly:

- CALL OUR TOLL-FREE NUMBER:
1.877.257.7330
- EMAIL:
Summerhaven.Wind@NextEraEnergy.com
- VISIT OUR WEBSITE:
www.NextEraEnergyCanada.com
- WRITE TO:
NextEra Energy Canada
5500 North Service Road, Suite 205
Burlington, ON L7L 6W6

IN THIS EDITION

- Welcome
- About NextEra Energy Canada
- About the Summerhaven Wind Energy Centre
- Community Vibrancy Fund
- Frequently Asked Questions
- The Renewable Energy Approval Process
- Why Wind?

ABOUT NEXTERA ENERGY CANADA

- NextEra Energy Canada is a subsidiary of NextEra Energy Resources, LLC, the largest generator of wind energy in North America.
- NextEra Energy Resources operates 90 wind projects in 3 provinces and 17 states with more than 8,800 wind turbines providing over 8,500 megawatts of generation.
- NextEra Energy Resources is focused on developing clean, renewable energy. Approximately 95 per cent of our electricity comes from clean or renewable sources.



We value your privacy. Information will be collected and used in accordance with the Freedom of Information and Protection of Privacy Act, and will be maintained on file for use during the planning process for the proposed wind centres.

ABOUT THE SUMMERHAVEN WIND ENERGY CENTRE PROJECT

LOCATION:

The Summerhaven Wind Energy Centre will be located on private land in Haldimand County, Ontario. This location has been specifically chosen because of the site's current agricultural and industrial land use, potential to capture energy from the wind and access to transmission lines.

As we move forward, we are committed to maintaining the highest standards for the construction and operations of the wind turbines. As part of this, we will ensure factors related to health, the natural environment and local economy will be considered in every step of our construction and maintenance process.

ECONOMIC BENEFITS:

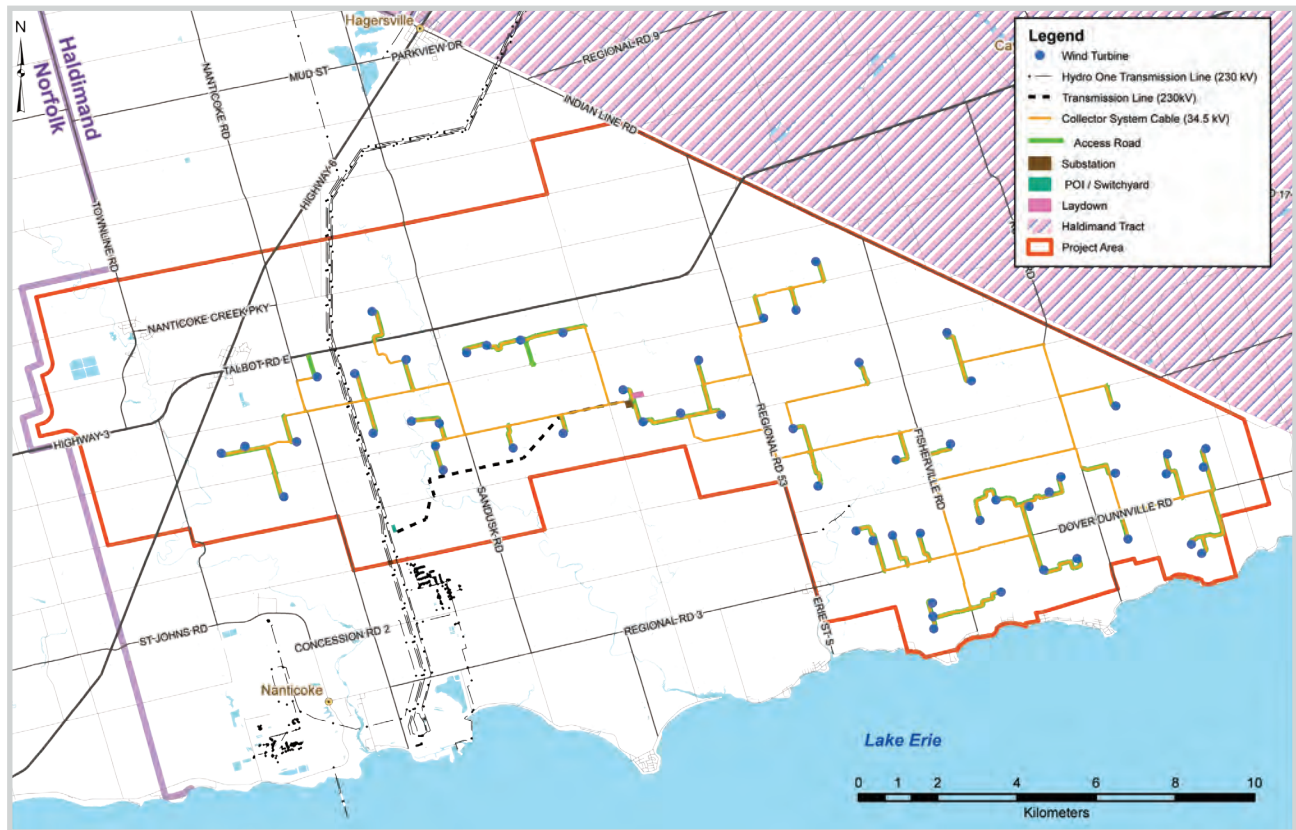
For Haldimand County, we anticipate the project will have a positive economic impact over its 20 year lifespan - driving jobs, wages, increased tax revenues and business activity for other industries in the area.

We estimate the proposed project will contribute \$135 million in corporate income tax and \$9 million in property taxes to the local County as well as approximately \$28 million in landowner payments.

In addition, the proposed project will help contribute approximately \$40 million to the community in accordance with a Community Vibrancy Fund agreement with the county (see below).

QUICK FACTS:

- We anticipate the Summerhaven Wind Energy Centre will ultimately generate up to 124.4 MW through 56 wind turbines.
- At maximum capacity, this will produce enough energy to power approximately 32,200 homes.
- We estimate the project will create about 250 construction jobs and 6-8 full time and local operations jobs.



COMMUNITY VIBRANCY FUND

In addition to the significant economic benefits the project will bring on its own, last Fall, Summerhaven Wind, LP, along with four other renewable energy developers, entered into a voluntary, non-legislated Community Vibrancy Fund Agreement.

The agreement was made between Haldimand County Council, Summerhaven Wind, LP and subsidiaries of four other renewable energy companies: Capital Power Corporation, Niagara

Region Wind Corporation, Pattern Energy and Samsung.

Should all the projects proceed, Haldimand will receive \$2 million every year for 20 years to support community initiatives and partnerships. This is one of the first agreements in Ontario and, we believe, represents a landmark in the relationship between municipalities and renewable energy providers.

Haldimand may use this fund in a variety of ways including:

- Land stewardship
- Recreational facilities
- Police, fire and healthcare support
- Roads and infrastructure

FREQUENTLY ASKED QUESTIONS

In our conversations with community members, we are often asked questions that are relevant to the entire community – we have answered some commonly asked questions below. If you have any additional questions or would like further information, please do not hesitate to contact us.

Q: WHAT DID SUMMERHAVEN DO TO ITS REA APPLICATION TO INCORPORATE COMMUNITY FEEDBACK?

A: Community feedback matters because it helps us to understand what is important to you and the community and how our plan can change to meet your needs.

One of the changes we made include the removal of a proposed wind turbine location. Even though this particular turbine met all setback requirements, it was deemed too close to the county's growth area, around Jarvis. Additionally, we altered some turbine access roads and collection cable routes to address concerns raised by local emergency service providers.

These changes are described in the REA Submission Design Change Report dated August 2011, which can be found on the website - www.NextEraEnergyCanada.com. In turn, we have updated the Noise Study Report (now dated August 2011) to reflect these changes.

Q: WHEN CAN WE EXPECT CONSTRUCTION TO BEGIN?

A: Currently, we anticipate construction to begin in the summer or fall for a period of four to six months. Although the construction of wind turbines is relatively quick compared to other types of power plants, this process will require heavy equipment, including bulldozers, graders, trenching machines, concrete trucks, flatbed trucks and large cranes.

Prior to construction, we will work with the Ministry of Transportation and local police to ensure that the equipment is delivered in a safe manner. Summerhaven always works to the highest safety standards and requires our contractors to do the same. We will keep you informed throughout the construction process.

Q: HOW WILL INQUIRIES BE PROCESSED AS THE PROJECT PROPOSAL MOVES FORWARD?

A: As part of the REA process, Summerhaven has established an official complaints procedure to ensure that all local issues and concerns are officially addressed. As part of this process, Summerhaven will carefully record and respond

to every inquiry by first notifying the County of Haldimand district office within two working days of receiving the request, and then responding within eight working days.

Q: HOW WILL WIND FARMS IMPACT FUTURE ECONOMIC DEVELOPMENT?

A: We have found that our wind farms have a positive impact by increasing the economic base of a community through stable, reliable income for landowners, additional tax revenue, new construction jobs and full-time permanent jobs once the plant is operational. Indirect income to local businesses, including motels, caterers and office supply companies add to the economic contribution of the project. Furthermore, wind farms increase the economic return on agricultural operations in the area, preserving traditional land use.

Q: WHAT IMPACT DO WIND TURBINES HAVE ON OUR HEALTH?

A: NextEra takes concerns about human health very seriously.

Although much has been written about health effects associated with wind turbines, we have found no credible, scientifically peer-reviewed study that demonstrates a link between wind turbines and negative health effects.

In May 2010, the Chief Medical Officer of Health of Ontario conducted a report titled *"The Potential Health Impacts of Wind Turbines"* which states¹:

"Scientific evidence available to date does not demonstrate a direct causal link between wind turbine noise and adverse health

effects. The sound level from wind turbines at common residential setbacks is not sufficient to cause hearing impairment or other direct health effects, and there is no scientific evidence to date that vibration from low frequency wind turbine noise causes adverse health effects."

In *"Health effects and wind turbines: A review of the literature"*, Canadian based Loren D. Knopper and Christopher Ollson state:

"To date, no peer reviewed articles demonstrate a direct causal link between people living in proximity to modern wind turbines, the noise they emit and resulting physiological health effects."²

Canadian Wind Energy Association's *"Wind Turbine Sound and Health Effects: An Expert Panel Review"* states:

- Sound from wind turbines does not pose a risk of hearing loss or any other adverse health effect in humans;
- Sub-audible, low frequency sound and infrasound from wind turbines do not present a risk to human health;
- Some people may be annoyed at the presence of sound from wind turbines. Annoyance is not a pathological entity; and
- A major cause of concern about wind turbine sound is its fluctuating nature. Some may find this sound annoying, a reaction that depends primarily on personal characteristics as opposed to the intensity of the sound level.³

¹ The report can be found at: http://www.health.gov.on.ca/en/public/publications/ministry_reports/wind_turbine/wind_turbine.pdf

² The report can be found at: <http://www.ehjournal.net/content/10/1/78>

³ The report can be found at: http://www.canwea.ca/pdf/talkwind/Wind_Turbine_Sound_and_Health_Effects.pdf



THE RENEWABLE ENERGY APPROVAL PROCESS

Proposed wind and renewable energy projects in Ontario must go through an approval process regulated by the Ministry of the Environment and the Ministry of Natural Resources. Under the Renewable Energy Approval (REA) process, a proposed wind project must show that it meets the guidelines as set out by Ontario's Green Energy Act.

As part of the REA process, Summerhaven undertook and supplied a number of comprehensive studies that assessed how the proposed project will impact the cultural and heritage resources, natural environment as well as the local community. These studies were included as a formal component of our REA documentation which was reviewed by a number of provincial government agencies including the Ministry of Natural Resources, the Ministry of Transportation, the Ministry of Tourism, Culture and Sport, as well as conservation authorities. These studies are available on our website for your review at, www.NextEraEnergyCanada.com.

In March 2012, Ontario's Ministry of the Environment approved the REA for the Summerhaven Wind Energy Centre project. Subsequently, three notices of appeal were filed in accordance with the Environmental Bill of Rights Act. One appeal was withdrawn by the appellant. Summerhaven is respectful of this process and the proceedings which will take place over the next few months.

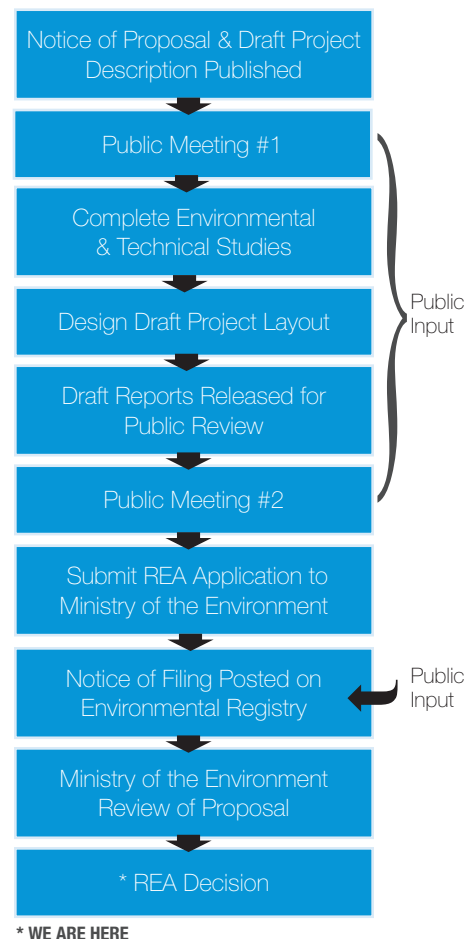
WHAT WILL HAPPEN NEXT?

Summerhaven is in the process of finalizing plans to begin construction. A detailed traffic management plan will be in place and communicated to the local community prior to the start of construction.

In addition, as part of the REA requirements, Summerhaven will establish a Community Liaison Committee, which will provide local residents and members of the public with a forum to exchange ideas. The Committee will meet at least twice a year for 2 years to update local residents on the project and answer questions relating to the construction, installation and operation of the wind turbine project. More information on this committee and how to be involved will be available on our website and notices in the local newspapers within the next 2 months.

As part of the REA process, Summerhaven has established an official complaints procedure to ensure that all local issues and concerns are officially addressed. As part of this process, Summerhaven will carefully record and respond to every complaint by first notifying the County of Haldimand district office within two working days of receiving the complaint, and then responding within eight working days.

OVERVIEW OF THE APPROVAL PROCESS



WHY WIND?

The Ontario Government has identified a need to increase clean, renewable energy generation in Ontario through renewable energy projects including solar farms and wind turbines. This is intended to reduce our province's dependence on traditional forms of energy while boosting investment and creating local jobs.

Not only are wind turbines considered 'clean energy' as they help reduce our dependence on fossil fuels without producing harmful waste, greenhouse gases or water emissions, they can also bring a host of benefits to your local community. While the costs of fuel for many forms of conventional energy are volatile, the cost of wind energy is fixed. This means that once a wind farm is built, the price of electricity is stable for the lifespan of the wind turbine – approximately 20-30 years.

Developments in technology have also resulted in more efficient wind turbine production and the last twenty years has seen the cost of wind

generated electricity drop significantly. On top of this, there has been a threefold increase in the amount of power wind turbines can generate, making wind an increasingly cost-effective energy resource. The construction and maintenance of wind turbines also benefits your local community as they stimulate economic growth.

BY 2018⁵, IT IS ANTICIPATED THAT THE WIND ENERGY SECTOR WILL ATTRACT BILLIONS OF DOLLARS OF PRIVATE INVESTMENTS TO ONTARIO, AND ONCE THE WIND TURBINES ARE INSTALLED AND PRODUCING POWER, MORE THAN HALF OF THIS – APPROXIMATELY \$8.5 BILLION⁶ – WILL BE SPENT LOCALLY IN COMMUNITIES ACROSS THE PROVINCE

IN ONTARIO ALONE, LANDOWNERS ARE EXPECTED TO BENEFIT FROM OVER \$1 BILLION IN LEASE PAYMENTS OVER THE 20-YEAR LIFESPAN OF PROJECTS – ENSURING THAT THEY AND THEIR FAMILIES CAN CONTINUE TO RELY ON THE LAND AS A VALUED SOURCE OF INCOME FOR GENERATIONS TO COME.

Looking ahead, when the wind turbines are decommissioned, there is no hazardous cleanup and newer, more efficient models could potentially take their place, making the cost of wind energy even more economical.

Lastly, wind energy diversifies and increases farmers' incomes as they continue to rely on traditional land use while receiving payments to lease a small portion of their land.

For these reasons, we believe wind turbines are a win-win situation for all.

⁵ ClearSky Advisors

⁶ Economic Impacts of the Wind Energy Sector in Ontario