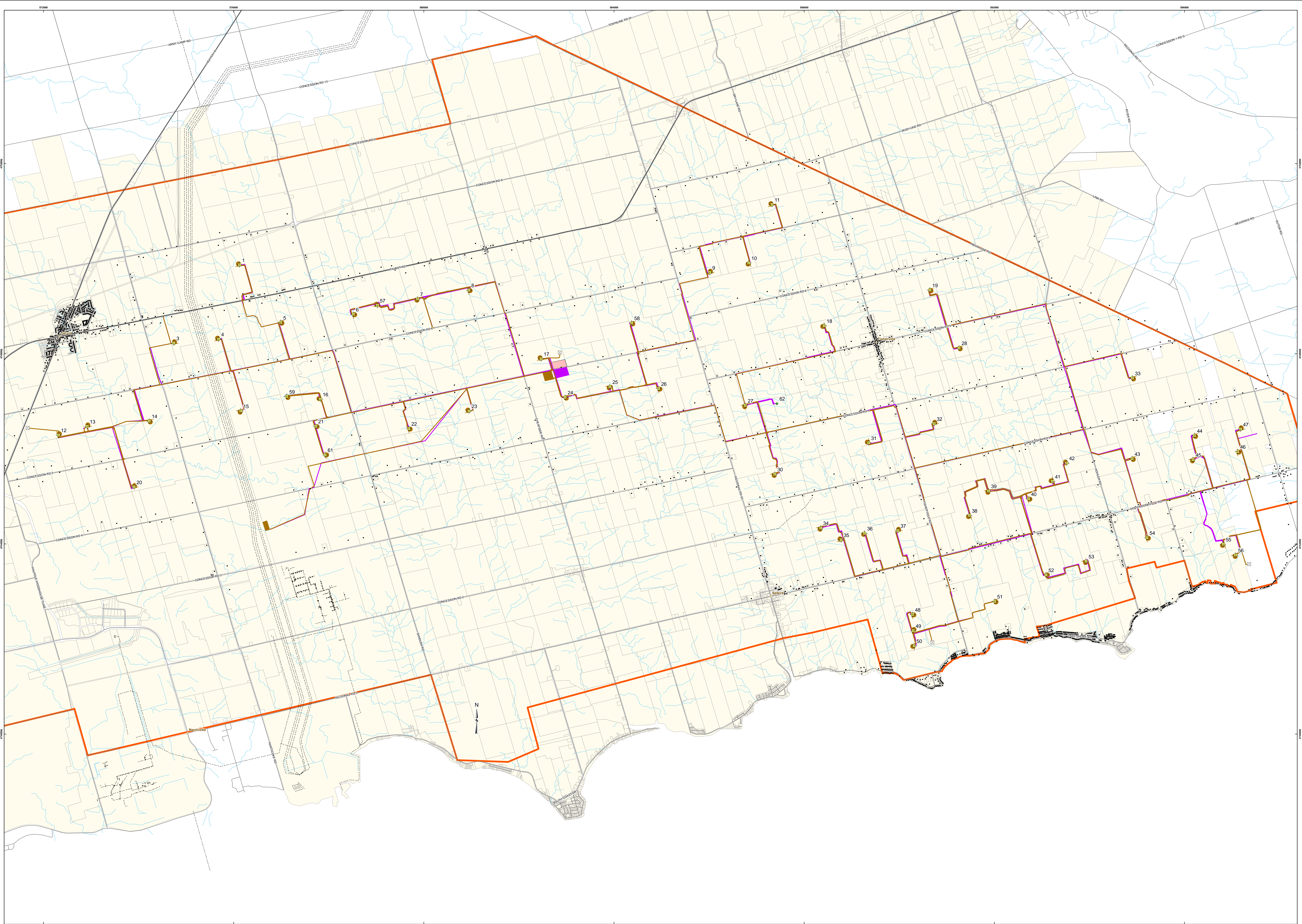




APPENDIX B

Comparison of June 13, 2011 REA Submission Project Design and Current Design



LEGEND

Current Design	June 13, 2011 REA Design	Mile Tower
Project Location	Project Location	Water Resource
		Community
		Public Use Transportation Lane
		Highway
		Regional Road
		Local Road
		Watercourse
		Landfill (city change)
		Project Area

REFERENCE

Base Data - MNR NFWIS, obtained 2004, CANMAP 2008.4
 Produced by Golden Associates Ltd under license from
 Ontario Ministry of Natural Resources, © Queens Printer 2009
 Projection: Transverse Mercator Datum: NAD 83 Coordinate System: UTM Zone 17

0 200 400 600 800 1,000 1,600 2,000
1:50,000

PROJECT: NEXTERA SUMMERHAVEN WIND PROJECT
 TITLE: COMPARISON OF JUNE 13, 2011 REA DESIGN AND CURRENT DESIGN
 PROJECT NO: 10-101-0000 SCALE AS SHOWN REV: _____
 DATE: 06/18/2011
 DRAWN BY: J. GIBSON
 CHECKED BY: J. GIBSON
 APPROVED BY: J. GIBSON

DRAFT Golden Associates
 Multi-Sector Services

APPENDIX B



APPENDIX C

Comparison Figures of Previous and Current Designs

Design change 1



Summerhaven Wind Farm

Nanticoke,
Ontario

Legend

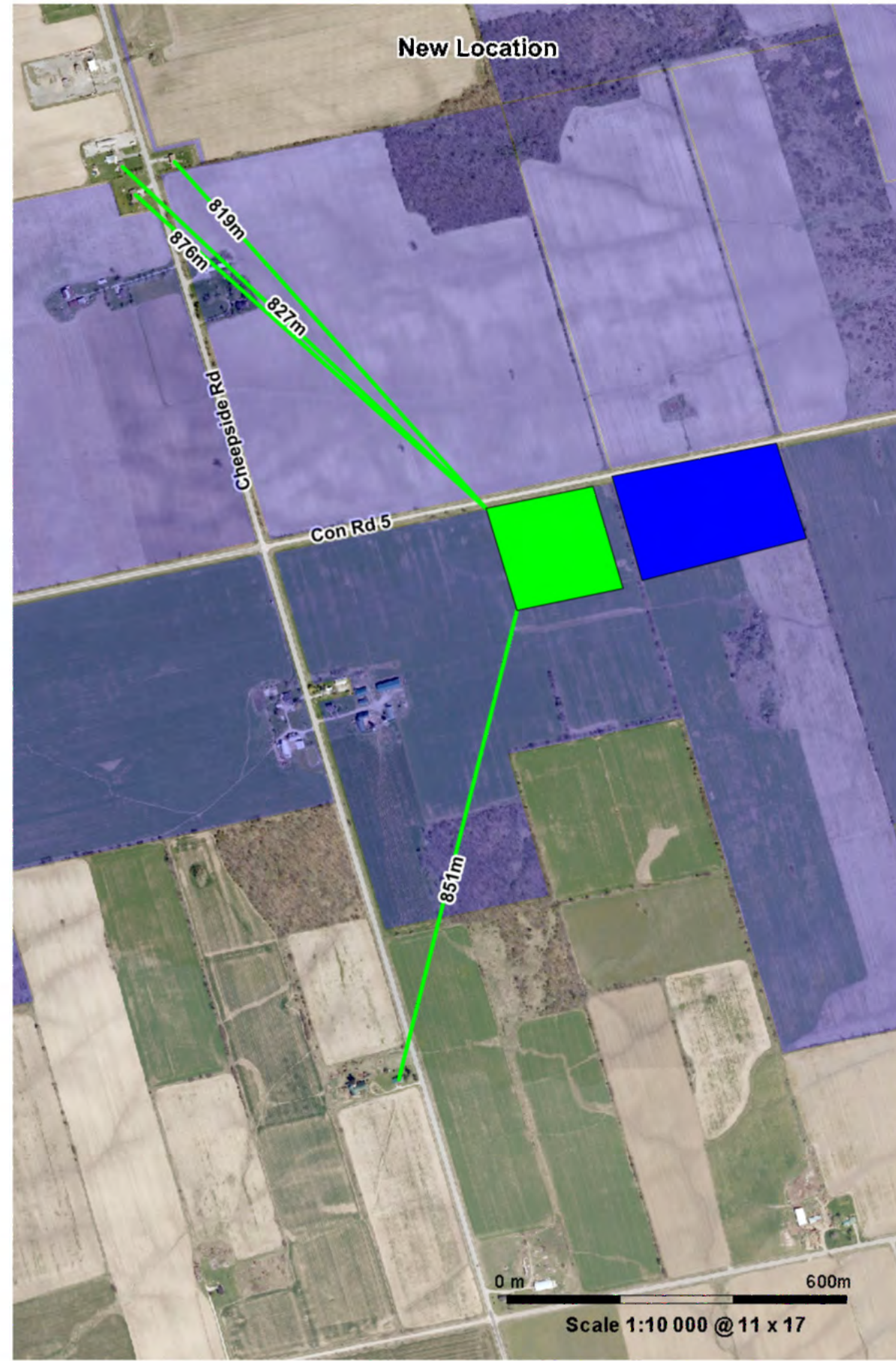
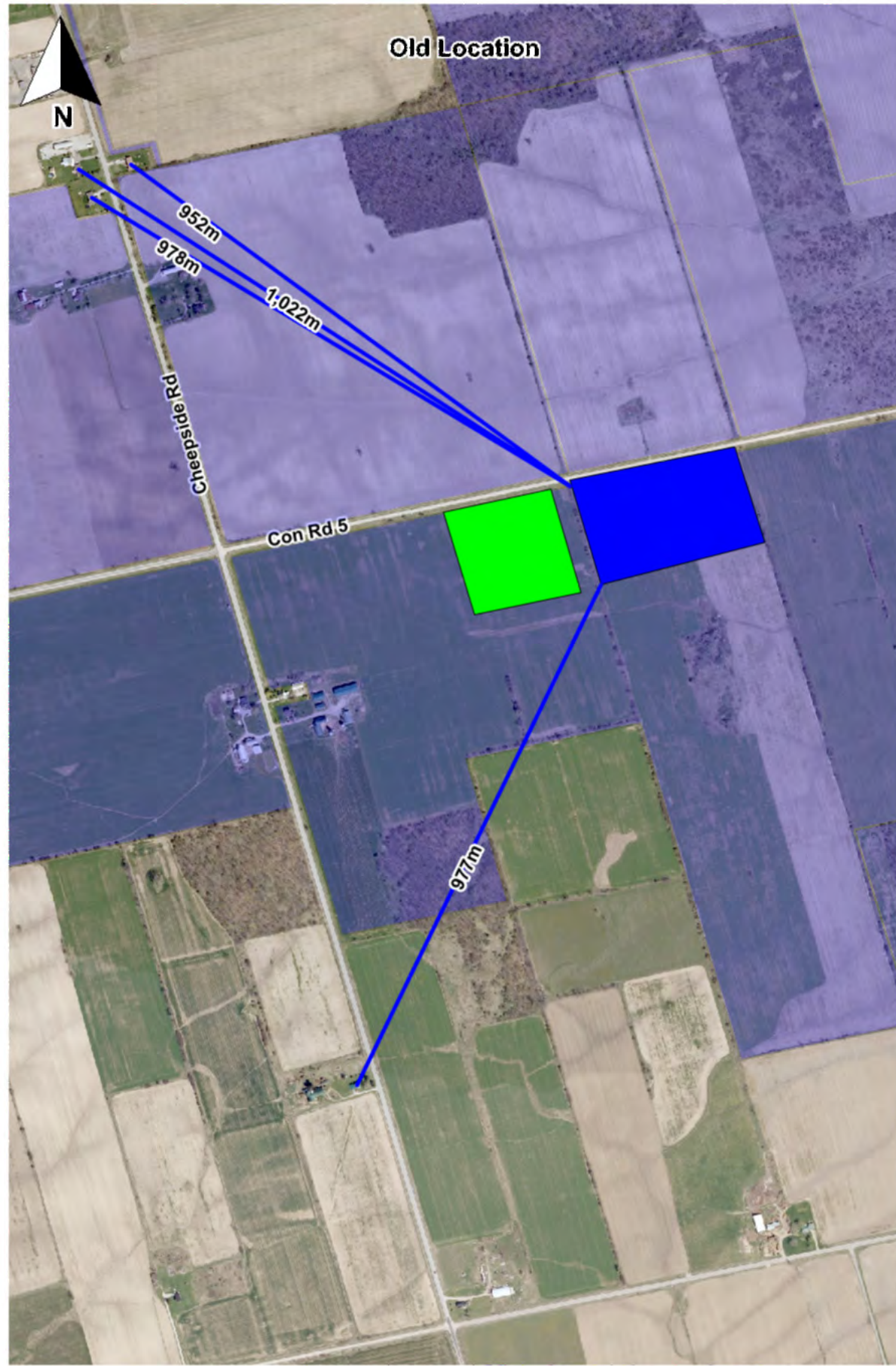
- Turbine location
- Met tower location
- Met tower cable
- Access track
- Collector cable
- Parcel fabric

Met Tower
Re-design

UTM (NAD 83) Zone 17
NAN_M529_CPK D10811

This map/drawing and any information herein is for general presentation purposes only. The drawing and associated electronic files are not intended for use in any engineering or detailed design plans. These drawings were created using MapInfo, and Air Energy TCI Inc. (AET) makes no warranty as to the accuracy of dimensions or any other information or notes contained herein. The receiver agrees to indemnify, defend and hold harmless AET, its officers, agents, and employees from and against any and all claims, suits, losses, damages or costs, including reasonable attorney's fees, arising from the use of these drawings or files. AET shall not be liable for any edits or amendments made to these drawings by the receiver after receipt. Any queries should be directed to Air Energy TCI Inc. Freephone: 1-888-942-1923

Design Change 2



Summerhaven Wind Farm

Nanticoke,
Ontario

Legend

- New substation location
- Old substation location
- Parcels under option

Substation Location Move

UTM (NAD 83) Zone 17
NAN_M53D_CPK D10811

This map/drawing and any information herein is for general presentation purposes only. The drawing and associated electronic files are not intended for use in any engineering or detailed design plans. These drawings were created using MapInfo, and Ais Energy TCI Inc. (AET) makes no warranty as to the accuracy of dimensions or any other information or notes contained herein. The receiver agrees to indemnify, defend and hold harmless AET, its officers, agents, and employees from and against any and all claims, suits, losses, damages or costs, including reasonable attorney's fees, arising from the use of these drawings or files. AET shall not be liable for any edits or amendments made to these drawings by the receiver after receipt. Any queries should be directed to Ais Energy TCI Inc. Freephone: 1-888-942-1923

Scale 1:10 000 @ 11 x 17





Design Change 4



Summerhaven Wind Farm

Nanticoke,
Ontario

Legend

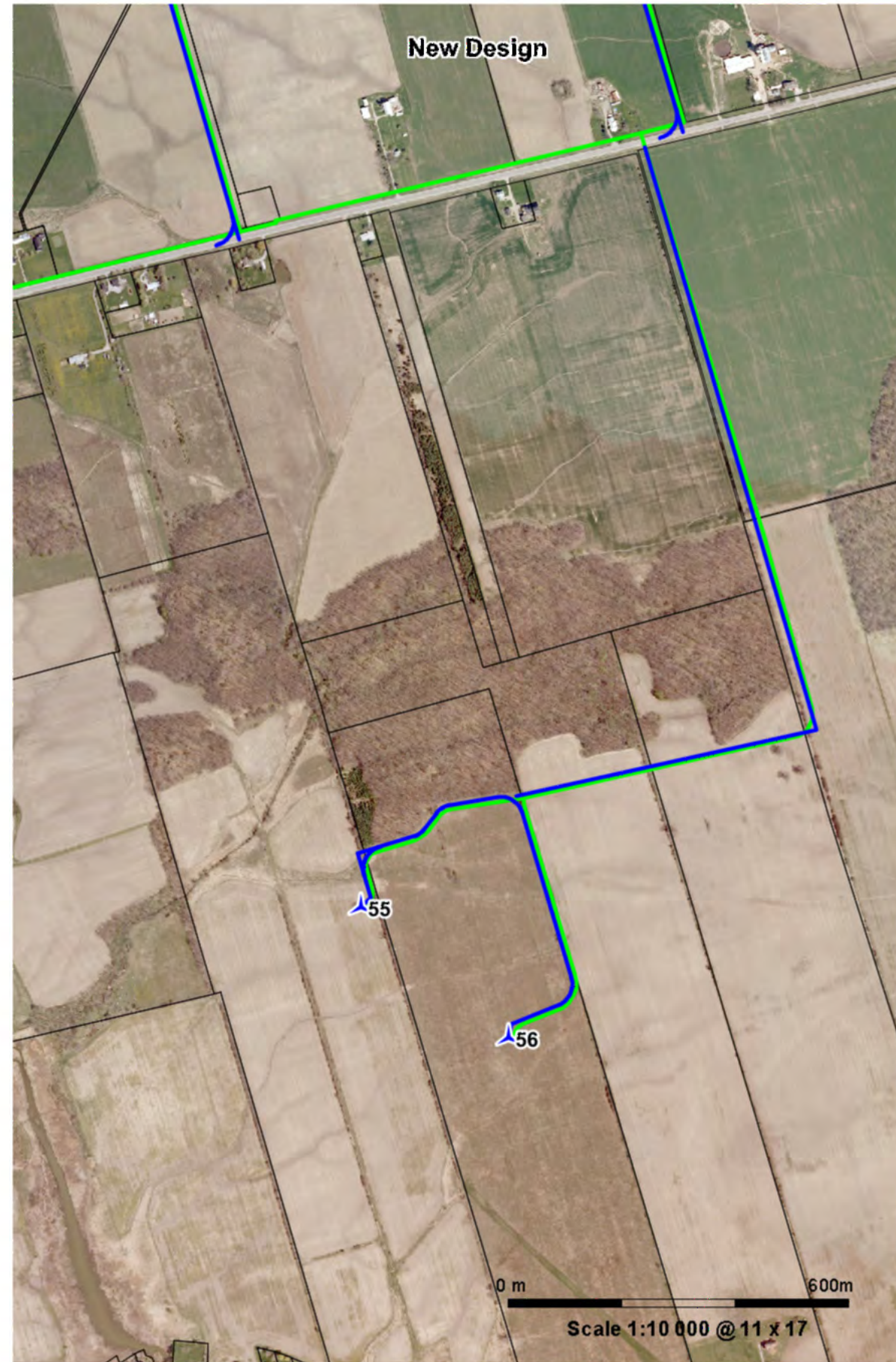
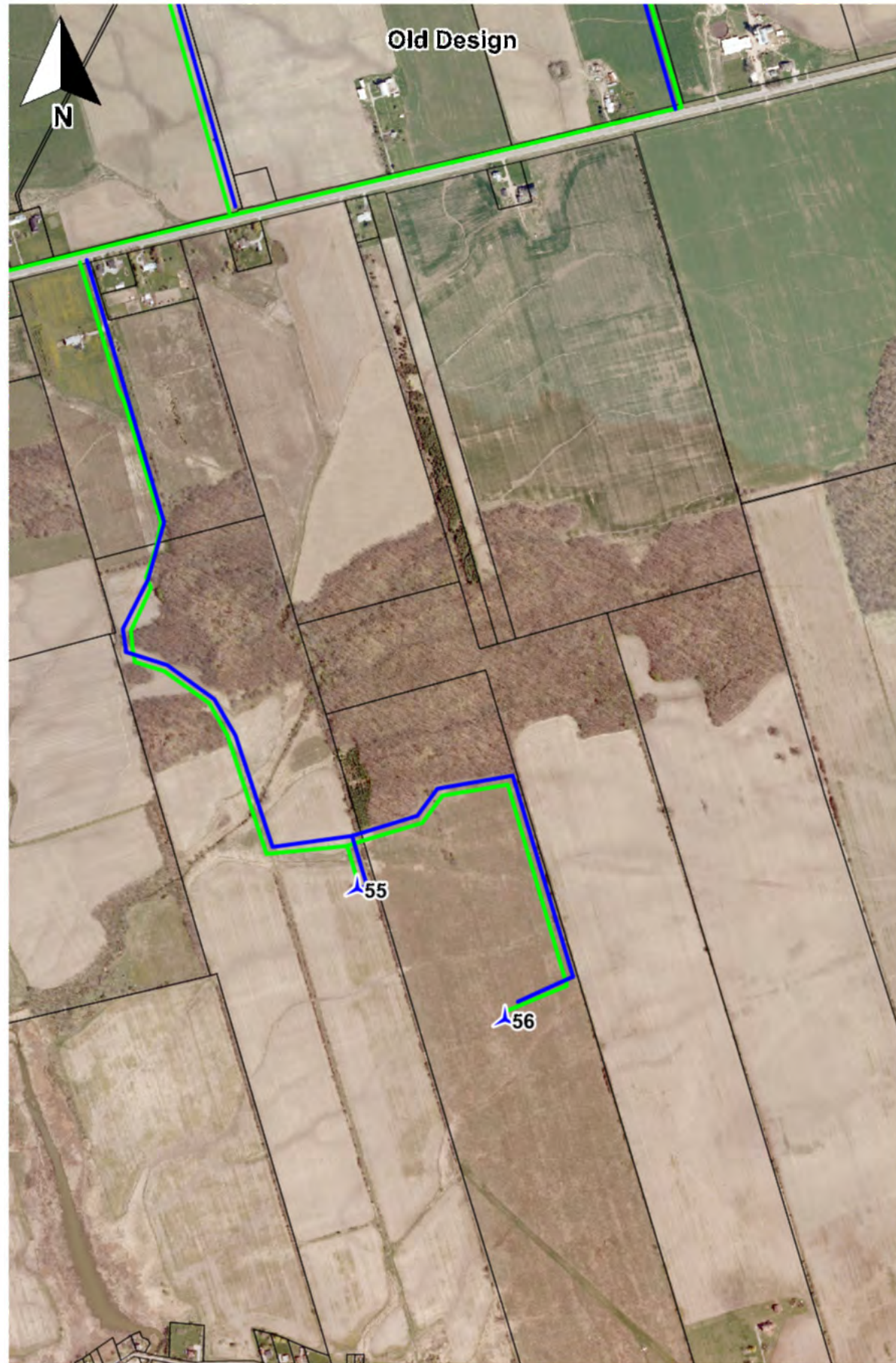
-  Turbine location
-  Access track
-  Collector cable
-  Parcel fabric

Removal of
Turbine 62

UTM (NAD 83) Zone 17
NAN_M531_CPK D10811

This map/drawing and any information herein is for general presentation purposes only. The drawing and associated electronic files are not intended for use in any engineering or detailed design plans. These drawings were created using MapInfo, and Ais Energy TCI Inc. (AET) makes no warranty as to the accuracy of dimensions or any other information or notes contained herein. The receiver agrees to indemnify, defend and hold harmless AET, its officers, agents, and employees from and against any and all claims, suits, losses, damages or costs, including reasonable attorney's fees, arising from the use of these drawings or files. AET shall not be liable for any edits or amendments made to these drawings by the receiver after receipt. Any queries should be directed to Ais Energy TCI Inc. Freephone: 1-888-942-1923





Design Change 5



Summerhaven Wind Farm

Nanticoke,
Ontario

Legend

-  Turbine location
-  Access track
-  Collector cable
-  Parcel fabric

Re-Design Access and Cable Turbine 55 and 56

UTM (NAD 83) Zone 17
NAN_M532_CPK D10811

This map/drawing and any information herein is for general presentation purposes only. The drawing and associated electronic files are not intended for use in any engineering or detailed design plans. These drawings were created using MapInfo, and Air Energy TCI Inc. (AET) makes no warranty as to the accuracy of dimensions or any other information or notes contained herein. The receiver agrees to indemnify, defend and hold harmless AET, its officers, agents, and employees from and against any and all claims, suits, losses, damages or costs, including reasonable attorney's fees, arising from the use of these drawings or files. AET shall not be liable for any edits or amendments made to these drawings by the receiver after receipt. Any queries should be directed to Air Energy TCI Inc. Freephone: 1-888-942-1923

At Golder Associates we strive to be the most respected global company providing consulting, design, and construction services in earth, environment, and related areas of energy. Employee owned since our formation in 1960, our focus, unique culture and operating environment offer opportunities and the freedom to excel, which attracts the leading specialists in our fields. Golder professionals take the time to build an understanding of client needs and of the specific environments in which they operate. We continue to expand our technical capabilities and have experienced steady growth with employees who operate from offices located throughout Africa, Asia, Australasia, Europe, North America, and South America.

Africa	+ 27 11 254 4800
Asia	+ 86 21 6258 5522
Australasia	+ 61 3 8862 3500
Europe	+ 356 21 42 30 20
North America	+ 1 800 275 3281
South America	+ 55 21 3095 9500

solutions@golder.com
www.golder.com

Golder Associates Ltd.
2390 Argentia Road
Mississauga, Ontario, L5N 5Z7
Canada
T: +1 (905) 567 4444

