

G:\Projects\2010\10-1151-0035_NextEra\Naticoke\Wind\GIS\MapDocs\Drawn\Report\Project\Description\Project\LocationMap.mxd



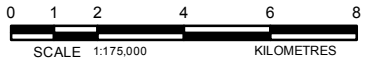
LEGEND

- Community
- Highway
- Major Road
- Local Road
- Water
- Project Area
- Project Location
- Wooded Area
- Haldimand Tract
- Provincial Park
- Conservation Area
- Municipal Boundary



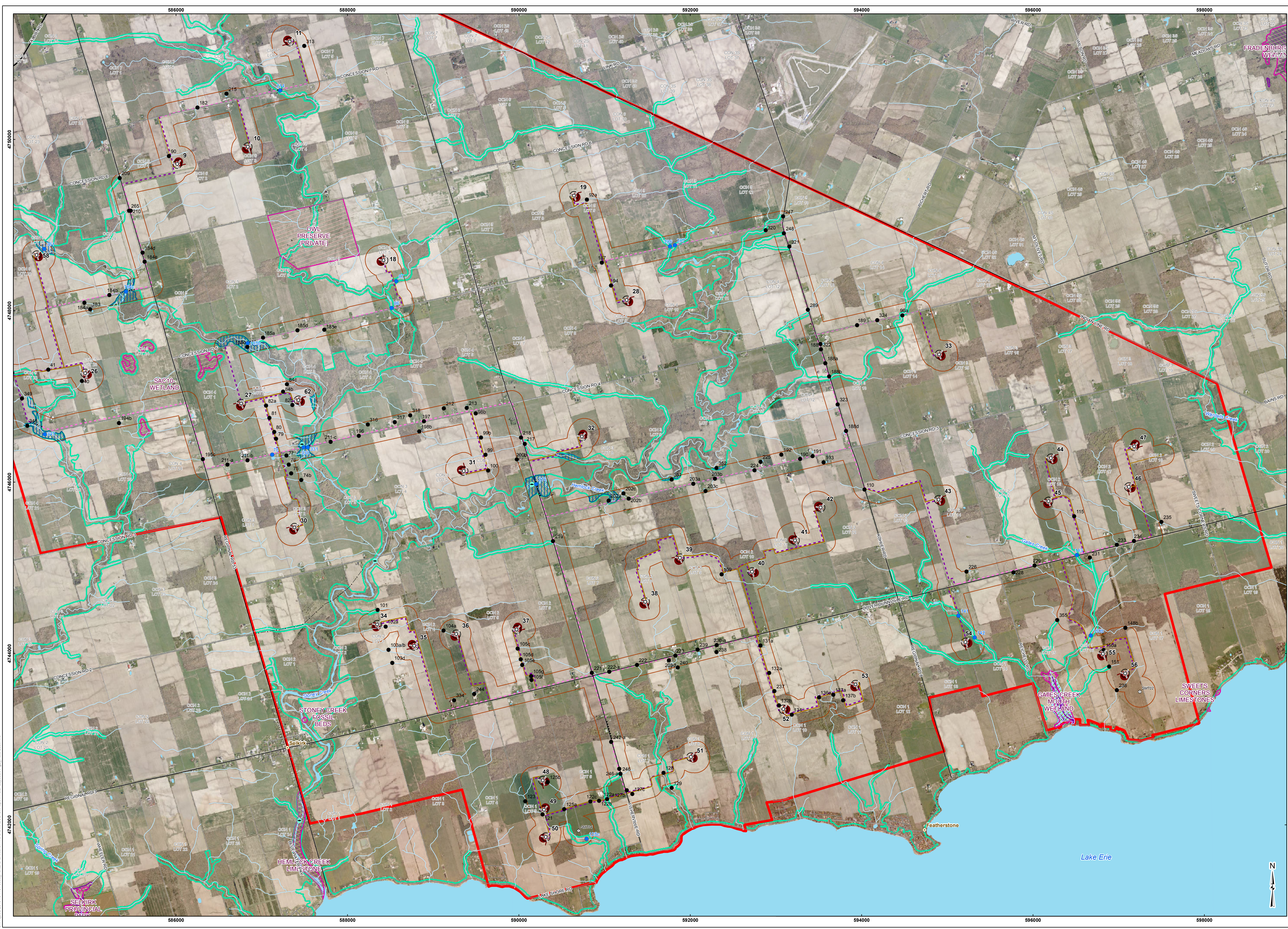
REFERENCE

Base Data - MNR NRVIS, obtained 2004, CANMAP v2008.4
 Produced by Golder Associates Ltd under licence from
 Ontario Ministry of Natural Resources, © Queens Printer 2009
 Projection: UTM Datum: NAD 83 Coordinate System: UTM Zone 17



PROJECT		Summerhaven Wind Energy Centre	
TITLE		PROJECT AREA	
<p>Golder Associates Mississauga, Ontario</p>	PROJECT NO. 10-1151-0035	SCALE AS SHOWN	REV.
	DESIGN PP 7 Apr. 2010		
	GIS BC 26 Sep. 2010		
	CHECK PP 26 Sep. 2010		
	REVIEW JW 26 Sep. 2010		

FIGURE: 1



LEGEND

Project Location

- Turbine and Number
- Meteorological Tower
- Underground Cable - Directional Drill of Punch/Bore
- Underground Cable - Trenched
- Overhead Cable
- Switchyard and Hydro One Point of Interconnect
- Construction Field Offices and Temporary Storage
- Access Road
- Temporary Storage / Laydown Area
- Turbine Blade Limit
- Reg. 55/09 Natural Heritage/Water
- Setback From Project Location

Natural Heritage Field and Survey Points

- Non-Waterbody Field Point
- Waterbody Field Point
- MNR Fish Survey Point

Significant Natural Features (Known or Candidate)

- Regionally Significant Natural Feature
- Provincially Significant Natural Feature
- Significant Valleyland
- Riverine Hazard Lands
- Long Point Region Conservation Authority (LPRCA) Regulation Limit

Base Data

- Community
- Highway
- Major Road
- Local Road
- Railway
- Hydro One Transmission Line
- Watercourse
- Water (NRVIS)
- Wetland (NRVIS)
- Provincial Park
- Conservation Area
- Lot Boundary
- Project Area

NOTES

See Site Plan Report for description of substation and transmission options.

INDEX MAP

REFERENCE

- Base Data - MNR NRVIS, obtained 2004, CANMAP v2008.4
- Imagery - FirstBase Solutions / Halton County, 2006
- Natural Features compiled by Golden from NRVIS base data, NIHC Natural Areas and MNR Wetland and ANS data, obtained 2010
- Riverine Hazard Lands provided by Halton County
- MNR Fish Survey Points obtained on December 14, 2009
- LPRCA Reg Limits provided by Long Point Region Conservation Authority, 2009

Produced by Golden Associates Ltd under licence from Ontario Ministry of Natural Resources, © Queens Printer 2010
 Projection: Transverse Mercator Datum: NAD 83 Coordinate System: UTM Zone 17

0 100 200 400 600 800 1,000
 SCALE 1:20,000 METRES

PROJECT
 Summerhaven Wind Energy Centre

TITLE
 WATER ASSESSMENT FEATURES EAST

FIGURE: 2



LEGEND

Project Location

- Turbine and Number
- Underground Cable - Directional Drill of Punch/Bore
- Underground Cable - Trenched
- Overhead Cable
- Transmission Line
- Substation
- Switchyard and Hydro One Point of Interconnect
- Construction Field Offices and Temporary Storage
- Access Road
- Temporary Storage / Laydown Area
- Turbine Blade Limit
- O.Reg.359/09 Natural Heritage/Water Setback From Project Location

Natural Heritage Field and Survey Points

- Non-Waterbody Field Point
- Waterbody Field Point
- MNR Fish Survey Point

Significant Natural Features (known or candidate)

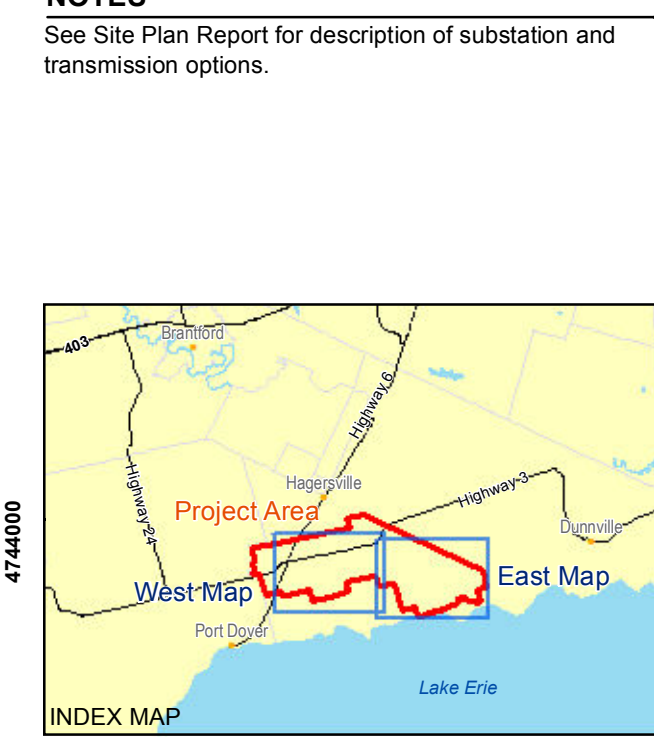
- Regionally Significant Natural Feature
- Provincially Significant Natural Feature
- Significant Wetland
- Riverine Hazard Lands
- Long Point Region Conservation Authority (LPRCA) Regulation Limit

Base Data

- Community
- Highway
- Major Road
- Local Road
- Railway
- Hydro One Transmission Line
- Watercourse
- Water (NRVIS)
- Wetland (NRVIS)
- Provincial Park
- Conservation Area
- Lot Boundary
- Project Area

NOTES

See Site Plan Report for description of substation and transmission options.



REFERENCE

- Base Data - MNR NRVIS, obtained 2004, CANMAP v2008.4
- Imagery - FirstBase Solutions / Halton County, 2006
- Natural Features compiled by Goldenrod from NRVIS base data, NIHC Natural Areas and MNR Wetland and ANS data, obtained 2010
- Riverine Hazard Lands provided by Halton County
- MNR Fish Survey Points obtained on December 14, 2009
- LPRCA Reg Limits provided by Long Point Region Conservation Authority, 2009

Produced by Golden Associates Ltd under license from Ontario Ministry of Natural Resources, © Queens Printer 2010
 Projection: Transverse Mercator Datum: NAD 83 Coordinate System: UTM Zone 17

0 100 200 400 600 800 1,000
 SCALE 1:20,000 METRES

PROJECT
 Summerhaven Wind Energy Centre

TITLE
 WATER ASSESSMENT FEATURES WEST

FIGURE: 3