

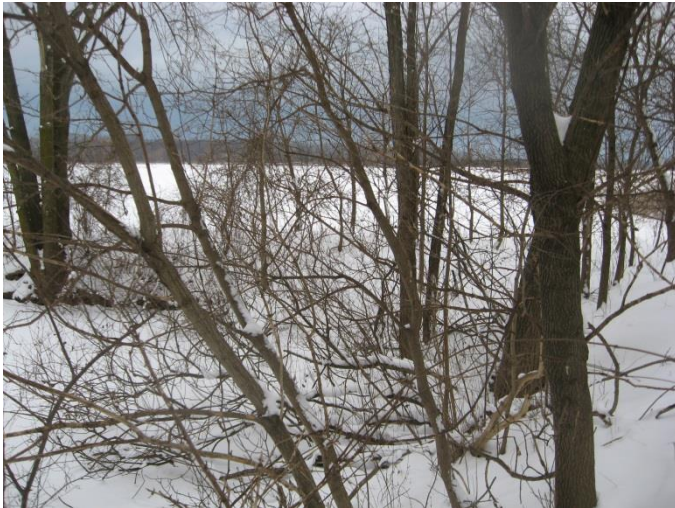
**B2. Photographic Log of Pre-
construction Dewatering
Monitoring on December 18, 2013**

Appendix B2. Photographic Log of Pre-construction Dewatering Monitoring on December 18, 2013**Monitoring Location M1**

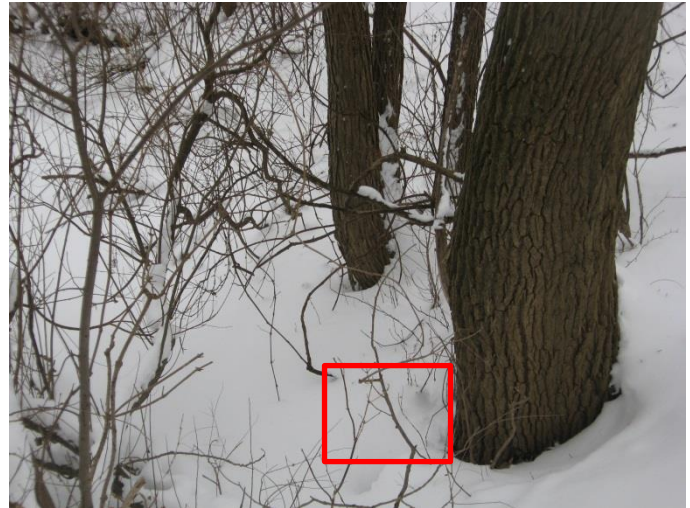
Photograph 1. ↑
Pond and surrounding vegetation covered in snow, facing west.



Photograph 2. ↑
East end of pond frozen and covered in snow.



Photograph 3. ↑
Manitoba Maple (*Acer negundo*) trees surrounding pond.



Photograph 4. ↑
Location of culvert on east side of pond covered in snow.

Appendix B2. Photographic Log of Pre-construction Dewatering Monitoring on December 18, 2013

Photograph 5. ↑

Location of culvert draining out into watercourse east of and behind pond. Watercourse behind pond is frozen.



Photograph 6. ↑

Mini-piezometer and staff gauge installed at east end of pond and covered in snow, facing west.

Appendix B2. Photographic Log of Pre-construction Dewatering Monitoring on December 18, 2013

Monitoring Location R1



Photograph 7. ↑
Cultural meadows surrounding banks of frozen pond, facing east from monitoring location.



Photograph 8. ↑
Surrounding cultural meadows and Phragmites on banks of pond covered in snow, facing west from monitoring location.



Photograph 9. ↑
Red-osier thicket and cultural meadow on north bank of pond.



Photograph 10. ↑
Possible snow covered muskrat den located on south bank, across from monitoring location.

Appendix B2. Photographic Log of Pre-construction Dewatering Monitoring on December 18, 2013**Photograph 11. ↑**

Mini-piezometer and staff gauge location, ice visible.

**B3. Photographic Log of Pre-
construction Dewatering
Monitoring on January 24, 2014**

Appendix B3. Photographic Log of Pre-construction Dewatering Monitoring on January 24, 2014

Monitoring Location M1



Photograph 1. ↑

Pond and surrounding vegetation covered in snow, facing west.

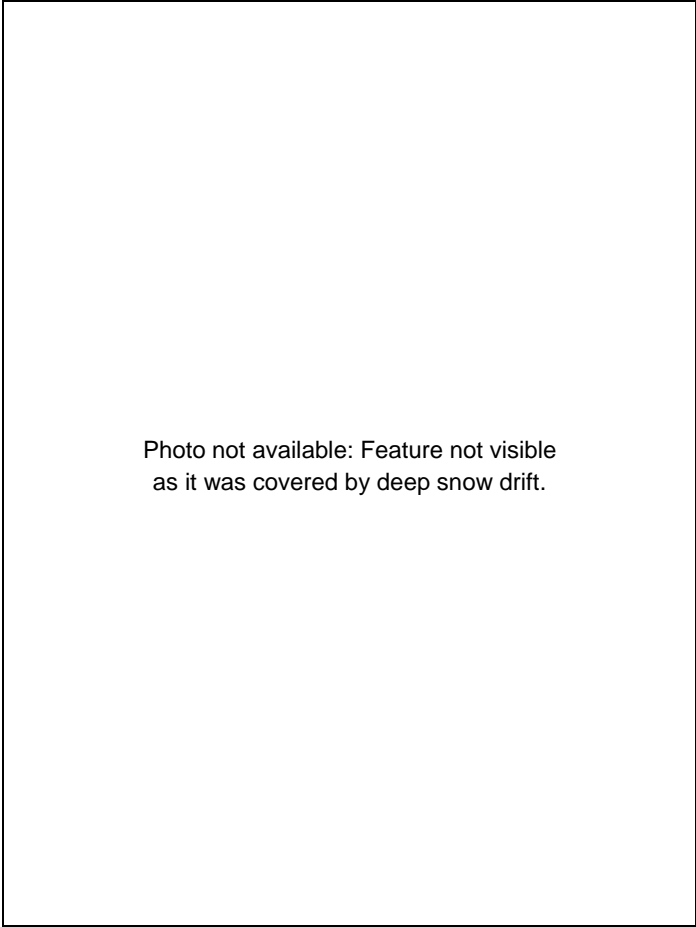


Photo not available: Feature not visible
as it was covered by deep snow drift.

Photograph 2. ↑

East end of pond frozen and covered in snow.

Appendix B3. Photographic Log of Pre-construction Dewatering Monitoring on January 24, 2014**Photograph 3. ↑**Manitoba Maple (*Acer negundo*) trees surrounding pond.

Photo not available: Feature not visible
as it was covered by deep snow drift.

Photograph 4. ↑

Location of culvert on east side of pond covered in snow.

Appendix B3. Photographic Log of Pre-construction Dewatering Monitoring on January 24, 2014

Photo not available: Feature not visible
as it was covered by deep snow drift.

Photograph 5. ↑

Location of culvert draining out into
watercourse east of and behind pond.

**Photograph 6. ↑**

Mini-piezometer and staff gauge installed at east
end of pond and covered in snow, facing west.

Appendix B3. Photographic Log of Pre-construction Dewatering Monitoring on January 24, 2014

Monitoring Location R1



Photograph 7. ↑

Cultural meadows surrounding banks of frozen pond, facing east from monitoring location.



Photograph 8. ↑

Surrounding cultural meadows and Phragmites on banks of pond covered in snow, facing west from monitoring location

Photo not available: Feature not visible as it was covered by deep snow drift.

Photograph 9. ↑

Red-osier thicket and cultural meadow on north bank of pond.

Photo not available: Feature not visible as it was covered by deep snow drift.

Photograph 10. ↑

Possible snow covered muskrat den located on south bank, across from monitoring location.



Photograph 11. ↑

Mini-piezometer and staff gauge location, covered in snow.

**B4. Photographic Log of Pre-
construction Dewatering
Monitoring on February 25, 2014**

Appendix B4. Photographic Log of Pre-construction Dewatering Monitoring on February 25, 2014

Monitoring Location M1



Photograph 1. ↑

Pond and surrounding vegetation covered in snow, facing west.



Photograph 2. ↑

East end of pond frozen and cover in snow.



Photograph 3. ↑

Manitoba Maple (*Acer negundo*) trees surrounding pond.



Photograph 4. ↑

Location of culvert on east side of pond covered in snow.

Appendix B4. Photographic Log of Pre-construction Dewatering Monitoring on February 25, 2014

Photo not available: Feature not visible
as it was covered by deep snow.



Photograph 5. ↑
Location of culvert draining out into
watercourse east of and behind pond.

Photograph 6. ↑
Mini-piezometer and staff gauge installed
at east end of pond, facing west.

Appendix B4. Photographic Log of Pre-construction Dewatering Monitoring on February 25, 2014

Monitoring Location R1



Photograph 7. ↑
Cultural meadows surrounding banks of pond,
facing east from monitoring location.



Photograph 8. ↑
Surrounding cultural meadows and Phragmites on
banks of pond, facing west from monitoring location.



Photograph 9. ↑
Red-osier thicket and cultural meadow
on north bank of pond.



Photograph 10. ↑
Possible muskrat den located on south
bank, across from monitoring location.

Appendix B4. Photographic Log of Pre-construction Dewatering Monitoring on February 25, 2014

Photograph 11. ↑
Mini-piezometer and staff gauge
location, covered in snow.

**B5. Photographic Log of Pre-
construction Dewatering
Monitoring on March 25, 2014**

Appendix B5. Photographic Log of Pre-construction Dewatering Monitoring on March 25, 2014

Monitoring Location M1



Photograph 1. ↑
Pond and surrounding vegetation covered in snow, facing west.



Photograph 2. ↑
East end of pond frozen and cover in snow.



Photograph 3. ↑
Manitoba Maple (*Acer negundo*) trees surrounding pond.



Photograph 4. ↑
Location of culvert on east side of pond partially covered in snow.

Appendix B5. Photographic Log of Pre-construction Dewatering Monitoring on March 25, 2014



Photograph 5. ↑
Location of culvert draining out into watercourse east of and behind pond.



Photograph 6. ↑
Mini-piezometer and staff gauge installed at east end of pond, facing west. Note staff gauge is buried beneath ice.

Appendix B5. Photographic Log of Pre-construction Dewatering Monitoring on March 25, 2014

Monitoring Location R1



Photograph 7. ↑
Cultural meadows surrounding banks of pond,
facing east from monitoring location.



Photograph 8. ↑
Surrounding cultural meadows and Phragmites on
banks of pond, facing west from monitoring location.



Photograph 9. ↑
Red-osier thicket and cultural meadow
on north bank of pond.



Photograph 10. ↑
Possible muskrat den located on south
bank, across from monitoring location.

Appendix B5. Photographic Log of Pre-construction Dewatering Monitoring on March 25, 2014

Photograph 11. ↑
Mini-piezometer and staff gauge location.