

NOTICE OF CHANGE TO A RENEWABLE ENERGY PROJECT

Project Name and OPA Reference Number: Jericho Wind Energy Centre, F-002172-WIN-130-601

Dated at Lambton and Middlesex Counties this 29th of August, 2014

Project Location: the Municipality of Lambton Shores and the Township of Warwick, Lambton County, Ontario and the Municipality of North Middlesex, Middlesex County, Ontario

Jericho Wind, LP, a wholly owned subsidiary of NextEra Energy Canada, LP, received a Renewable Energy Approval (REA) for the Jericho Wind Energy Centre (the "Project") on April 14, 2014 (REA Approval # 585-9HH-GQR). The proposal to engage in the project and the project itself is subject to the provisions of the *Environmental Protection Act* (ACT) Part V.0.1 and Ontario Regulation 359/09 (Regulation).

This notice is being distributed at the request of the Ministry of the Environment and Climate Change to advise of a recent proposed modification to the Project. The proposed modification results from the potential to require a greater amount of dewatering at certain turbines as outlined in the REA, specifically, the modification includes:

- Increasing the amount of water-taking allowed during the excavation and installation of turbine foundations for 57 turbines.

In all cases, Jericho will only remove the minimum amount of water needed for safe construction practices.

The Project modification described in the Project Modification Report does not change the overall conclusion of the Project Description Report (February, 2013) and associated Revision to the Project Description Report (October, 2013) which state that "this project can be constructed, installed and operated without any significant adverse residual effects to the environment. Post-construction monitoring related to effects on wildlife, including birds and bats, will be undertaken to confirm this conclusion."

A Project Modification Report is available for public inspection on the Project Website - <http://www.nexteraenergycanada.com/projects/jericho.shtml>.

To learn more about the project or to communicate concerns, please contact:

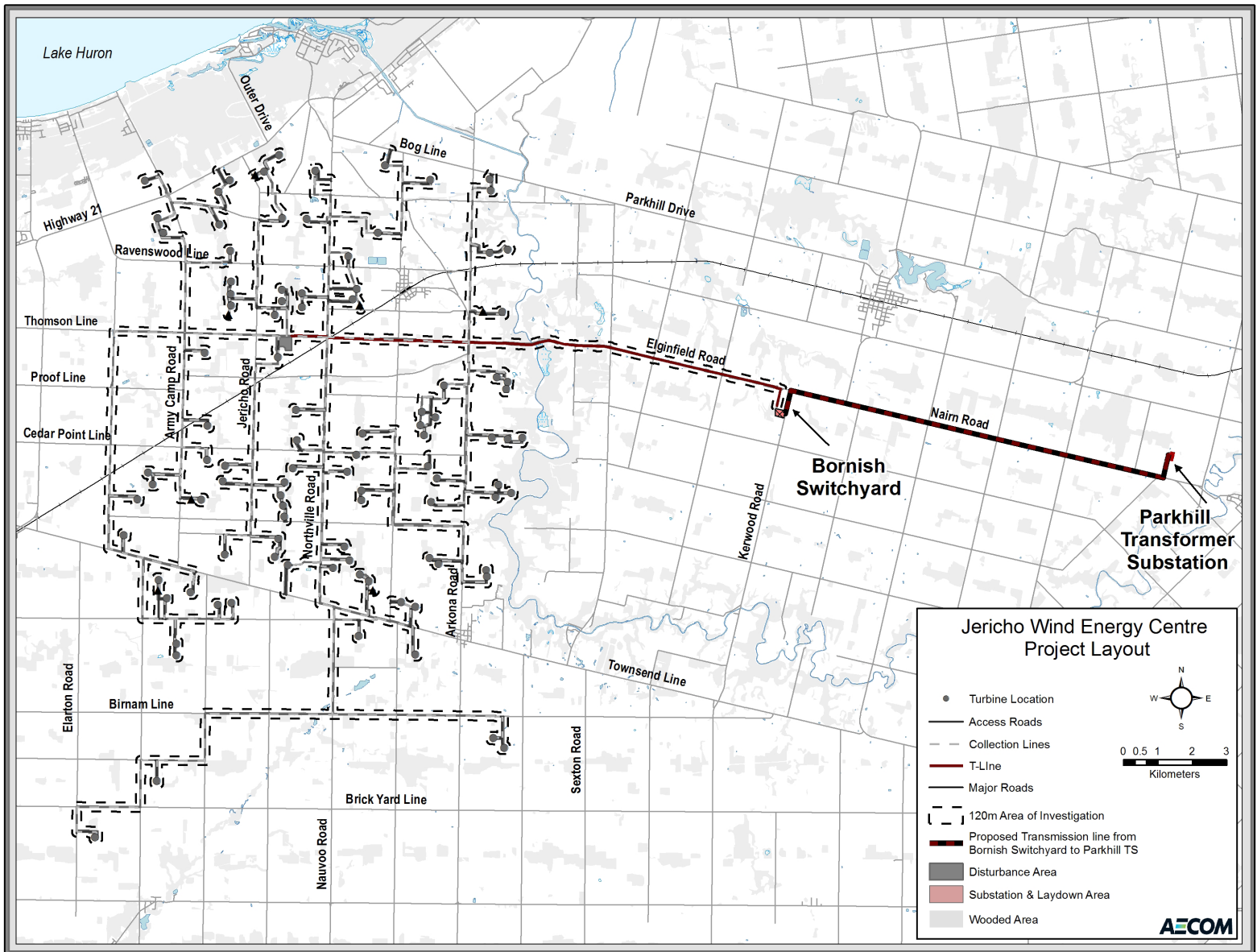
Derek Dudek
Community Relations Consultant
Jericho Wind, LP
390 Bay Street, Suite 1720
Toronto, ON M5H 2Y2

Toll-free Project Line: 1-877-257-7330

Email: Jericho.Wind@NextEraEnergy.com

Website: <http://www.nexteraenergycanada.com/projects/jericho.shtml>

Project Layout



**Jericho Wind Energy Centre
Project Layout**

- Turbine Location
- Access Roads
- - - Collection Lines
- T-Line
- Major Roads
- - - 120m Area of Investigation
- █ Proposed Transmission line from Bornish Switchyard to Parkhill TS
- █ Disturbance Area
- █ Substation & Laydown Area
- █ Wooded Area

0 0.5 1 2 3
Kilometers

AECOM