

**Appendix A6. Notice of Final
Public Meeting**



NOTICE OF PUBLIC MEETING

To be held by Jericho Wind, Inc., regarding a Proposal to Engage in a Renewable Energy Project

Project Name: Jericho Wind Energy Centre

Project Location: the Municipality of Lambton Shores and the Township of Warwick, Lambton County, Ontario and the Municipality of North Middlesex, Middlesex County, Ontario

Dated at Lambton and Middlesex Counties this the 26 of November 2012

Jericho Wind, Inc. is planning to engage in a renewable energy project in respect of which the issuance of a renewable energy approval is required. The proposal to engage in the project and the project itself are subject to the provisions of the Environmental Protection Act (ACT) Part V.0.1 and Ontario Regulation 359/09 (Regulation). This notice must be distributed in accordance with Section 15 of the Regulation prior to an application being submitted and assessed for completeness by the Ministry of the Environment.

The purpose of the meetings is to provide residents an opportunity to review and discuss the draft documentation related to the Project's Renewable Energy Approval. Public meetings will be held for the project on the following dates:

DATE: February 6, 2013	DATE: February 7, 2013	DATE: February 8, 2013
TIME: 5:00 p.m. to 8:00 p.m.	TIME: 5:00 p.m. to 8:00 p.m.	TIME: 5:00 p.m. to 8:00 p.m.
PLACE: Centennial Hall 101 Centennial Ave. Watford, ON	PLACE: Ailsa Craig Community Centre 155 Annie Ada Shipley Street Ailsa Craig, ON	PLACE: Kimball Hall 6276 Townsend Line Forest, ON

Project Description:

Pursuant to the Act and Regulation, the facility, in respect of which this project is to be engaged in, is a Class 4 Wind Facility. If approved, this facility would have a total maximum name plate capacity of up to 150-megawatts.

Documents for Public Inspection:

The Draft Project Description Report titled "Project Description Report – Jericho Wind Energy Centre" describes the project as consisting of 97 wind turbines (however, only approximately 92 will be constructed), turbine access roads, pad-mounted step-up transformers, an operations and maintenance building, meteorological towers, construction staging areas and electrical collector lines in the Wind Energy Centre Study Area and an overhead 115 kV transmission line from the proposed Jericho Transformer Substation to the proposed Bornish Switchyard and continuing to the proposed Parkhill Transformer Substation, please refer to **Figure 1**.

Jericho Wind, Inc. has prepared the following draft supporting documents in order to comply with the requirements of the Act and Regulation: Project Description Report; Construction Plan Report; Design and Operations Report; Decommissioning Plan Report; Wind Turbine Specifications Report; Natural Heritage Assessment Report; Water Assessment and Water Body Report; Stage 1 and 2 Archaeological Assessment Reports; Heritage Assessment Report; and Noise Study Report.

Written copies of these draft supporting documents will be made available for public inspection on November 27, 2012, at the Municipality of North Middlesex and Middlesex County, Municipality of Lambton Shores, Township of Warwick, and Lambton County municipal offices and at www.NextEraEnergyCanada.com.

Municipality of Lambton Shores
7883 Amtelecom Parkway, Forest

Middlesex County
399 Ridout Street North, London

Lambton County
789 Broadway Street, Wyoming

Municipality of North Middlesex
229 Parkhill Main Street, Parkhill

Township of Warwick
6332 Nauvoo Road, Watford

Written copies will also be available at the public meetings.

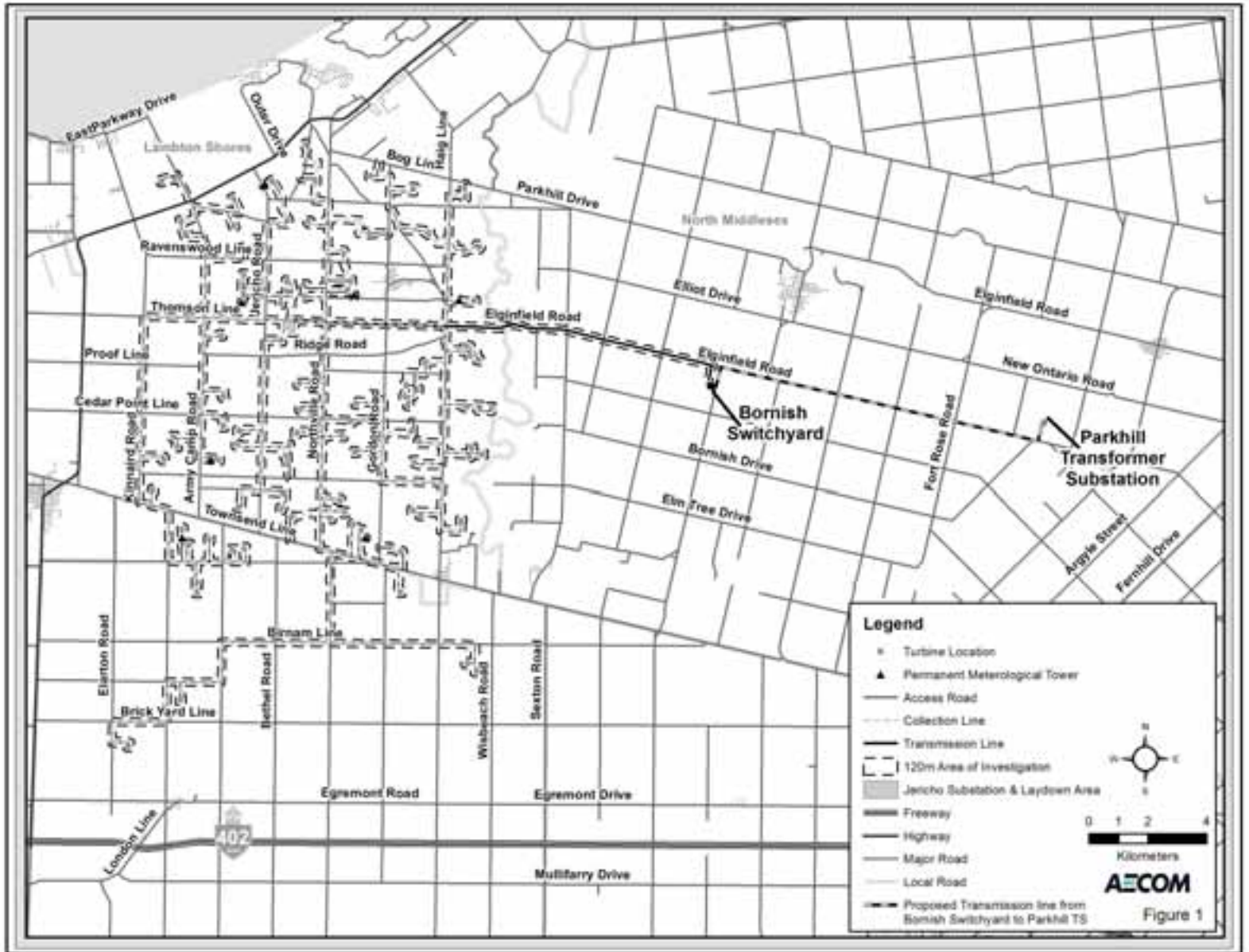
Should you wish to provide comments after the final public meetings, they can be forwarded directly to the Ministry of the Environment.

Project Contact and Information: To learn more about the project proposal or to communicate concerns please contact:

Derek Dudek, Community Relations Consultant
NextEra Energy Canada, ULC
390 Bay Street, Suite 1720
Toronto, ON M5H 2Y2

Toll-free Project Line: 1-877-257-7330
Email: Jericho.Wind@NextEraEnergy.com
Website: www.NextEraEnergyCanada.com

Figure 1: Jericho Wind Energy Centre Project Layout





NOTICE OF PUBLIC MEETING
To be held by Jericho Wind, Inc., regarding a
Proposal to Engage in a Renewable Energy Project
Note: Change of Venue for February 8, 2013 Meeting

Project Name: Jericho Wind Energy Centre

Project Location: the Municipality of Lambton Shores and the Township of Warwick, Lambton County, Ontario and the Municipality of North Middlesex, Middlesex County, Ontario

Dated at Lambton and Middlesex Counties on February 6, 2013

Jericho Wind, Inc. is planning to engage in a renewable energy project in respect of which the issuance of a renewable energy approval is required. The proposal to engage in the project and the project itself are subject to the provisions of the Environmental Protection Act (ACT) Part V.0.1 and Ontario Regulation 359/09 (Regulation). This notice must be distributed in accordance with Section 15 of the Regulation prior to an application being submitted and assessed for completeness by the Ministry of the Environment.

The purpose of the meetings is to provide residents an opportunity to review and discuss the draft documentation related to the Project's Renewable Energy Approval. Public meetings will be held for the project on the following dates:

DATE: February 6, 2013	DATE: February 7, 2013	DATE: February 8, 2013
TIME: 5:00 p.m. to 8:00 p.m.	TIME: 5:00 p.m. to 8:00 p.m.	TIME: 5:00 p.m. to 8:30 p.m.
PLACE: Centennial Hall 101 Centennial Ave. Watford, ON	PLACE: Ailsa Craig Community Centre 155 Annie Ada Shipley Street Ailsa Craig, ON	PLACE: **CHANGE OF VENUE** Legacy Recreation Centre 16 Allen Street Thedford, ON

Project Description:

Pursuant to the Act and Regulation, the facility, in respect of which this project is to be engaged in, is a Class 4 Wind Facility. If approved, this facility would have a total maximum name plate capacity of up to 150-megawatts.

Documents for Public Inspection:

The Draft Project Description Report titled "Project Description Report – Jericho Wind Energy Centre" describes the project as consisting of 97 wind turbines (however, only approximately 92 will be constructed), turbine access roads, pad-mounted step-up transformers, an operations and maintenance building, meteorological towers, construction staging areas and electrical collector lines in the Wind Energy Centre Study Area and an overhead 115 kV transmission line from the proposed Jericho Transformer Substation to the proposed Bornish Switchyard and continuing to the proposed Parkhill Transformer Substation, please refer to **Figure 1**.

Jericho Wind, Inc. has prepared the following draft supporting documents in order to comply with the requirements of the Act and Regulation: Project Description Report; Construction Plan Report; Design and Operations Report; Decommissioning Plan Report; Wind Turbine Specifications Report; Natural Heritage Assessment Report; Water Assessment and Water Body Report; Stage 1 and 2 Archaeological Assessment Reports; Heritage Assessment Report; and Noise Study Report.

Written copies of these draft supporting documents have been available for public inspection since November 27, 2012, at the Municipality of North Middlesex and Middlesex County, Municipality of Lambton Shores, Township of Warwick, and Lambton County municipal offices and at www.NextEraEnergyCanada.com.

Municipality of Lambton Shores
7883 Amtelecom Parkway, Forest

Middlesex County
399 Ridout Street North, London

Lambton County
789 Broadway Street, Wyoming

Municipality of North Middlesex
229 Parkhill Main Street, Parkhill

Township of Warwick
6332 Nauvoo Road, Watford

Written copies will also be available at the public meetings.

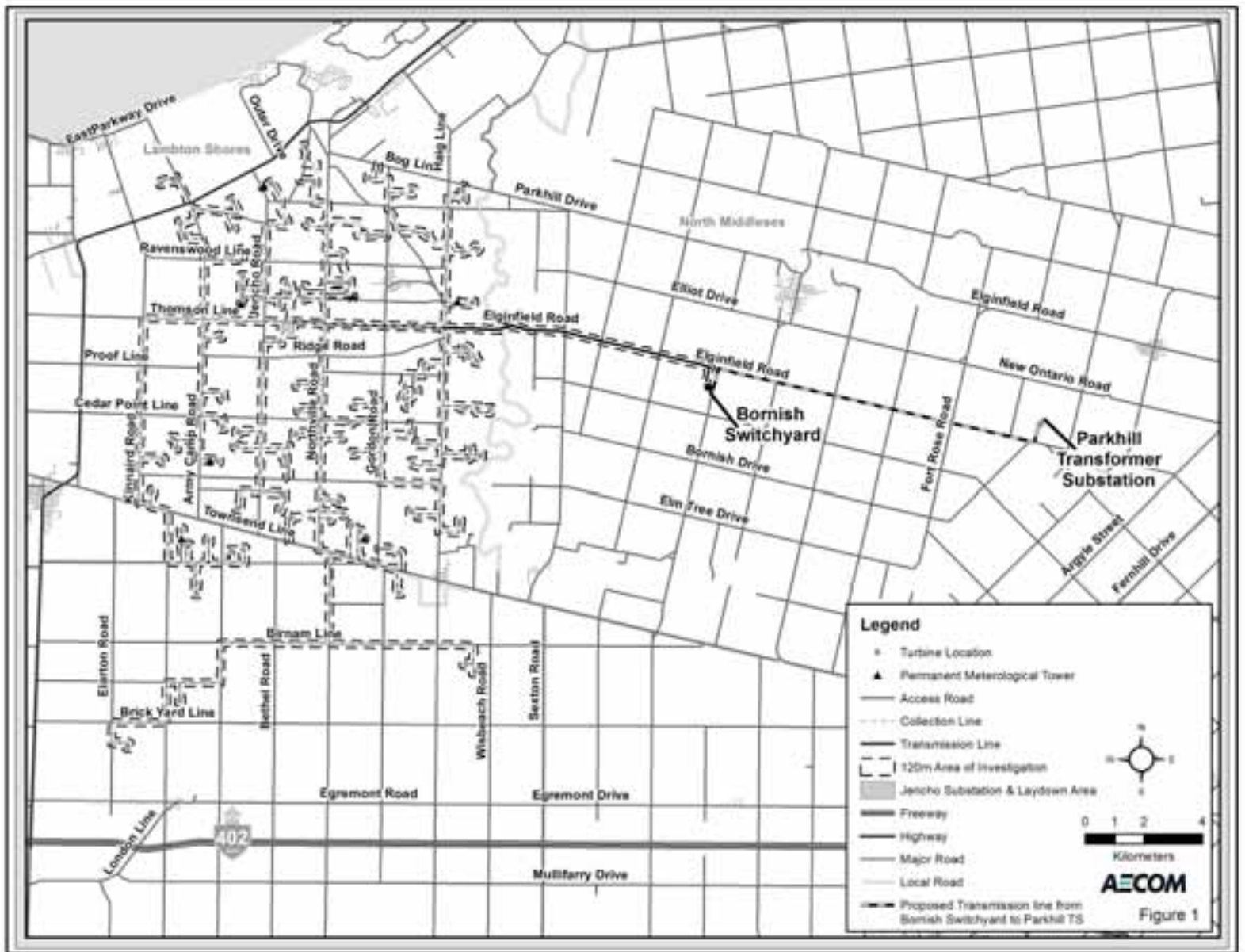
Should you wish to provide comments after the final public meetings, they can be forwarded directly to the Ministry of the Environment.

Project Contact and Information: To learn more about the project proposal or to communicate concerns please contact:

Derek Dudek, Community Relations Consultant
NextEra Energy Canada, ULC
390 Bay Street, Suite 1720
Toronto, ON M5H 2Y2

Toll-free Project Line: 1-877-257-7330
Email: Jericho.Wind@NextEraEnergy.com
Website: www.NextEraEnergyCanada.com

Figure 1: Jericho Wind Energy Centre Project Layout



Welcome!

NextEra Energy Canada welcomes you to tonight's event.

We are here to:

- ✦ Present the final turbine and transmission line route layout for the Jericho Wind Energy Centre
- ✦ Present field study findings and how we propose to address any effects
- ✦ Receive your comments
- ✦ Answer your questions
- ✦ Discuss draft reports



WIND ENERGY CENTRE - OPEN HOUSE

A Leader in Clean Energy

NextEra Energy Canada is an indirect, wholly-owned subsidiary of NextEra Energy Resources. NextEra Energy Resources, LLC is the largest generator of wind energy in North America.

NextEra Energy Canada

NextEra Energy Canada is a leading renewable energy developer in Canada focused on developing electricity derived from clean, renewable sources. Our Canadian operations are headquartered in Toronto, Ontario. We are the owner and operator of five wind energy projects and two solar energy projects in the following provinces:

- ✦ Quebec: Mount Copper and Mount Miller Wind Energy Centres
- ✦ Nova Scotia: Pubnico Point Wind Energy Centre
- ✦ Alberta: Ghost Pine Wind Energy Centre
- ✦ Ontario: Conestogo Wind Energy Centre and the Sombra and Moore Solar Energy Centres

NextEra Energy Canada is currently working toward approval of six wind energy centres in Ontario. We currently have two projects that received Renewable Energy Approval (REA), one which is operational and one under construction.

NextEra Energy Resources

We are:

- ✦ The operator of over 100 wind projects in 19 states and four provinces with over 9,000 wind turbines providing over 10,000 megawatts of generation
- ✦ The second largest global generator of renewable energy
- ✦ The largest generator of both wind and solar power in North America operating wind energy facilities for over 24 years

Did you know that NextEra Energy Resources...

- ✦ Began developing renewable energy projects in 1989?
- ✦ Has approximately 4,500 employees in North America?
- ✦ Generates approximately 95% of its electricity from clean or renewable sources?



Why is Southwestern Ontario considered a great choice for wind energy?

Wind developers favour Southwestern Ontario for two main reasons:

1. Strong and consistent wind levels, particularly around the Great Lakes
 - ✦ Wind data measuring wind speeds at heights of 30 metres (98 feet), 41.5 metres (136 feet) and 48.5 metres (159 feet) has been collected in the Project Study Area since 2007
 - ✦ Wind speeds are viable for commercial wind energy generation
2. Available and adjacent electricity transmission
 - ✦ The region is well served by existing and planned transmission lines (such as Hydro One's Bruce to Milton line) that have available capacity to receive the electricity generated by the project



Benefits of Wind Power

Environmental Compatibility

- ✦ Creates no air or water pollution
- ✦ Minimal greenhouse gas emissions
- ✦ Efficient and reliable
- ✦ Allows land to remain in agricultural use
- ✦ Does not use water in power generation
- ✦ Low environmental impact
- ✦ Free, renewable energy source

Local Economic Benefits

- ✦ Provides new employment opportunities
- ✦ Adds tax base to the local municipalities
- ✦ Supports the economy through purchases of regional goods and services
- ✦ Provides 8 to 10 local full time jobs and 200-300 construction jobs
- ✦ Delivers landowner lease payments
- ✦ Provides Community Vibrancy Funds to support local initiatives

Over the next 20 years, we estimate the project will contribute:

- ✦ \$200 million in corporate income tax
- ✦ \$20 million in property tax revenue
- ✦ \$30 million in landowner payments

Price Stability

- ✦ Decentralizes power production
- ✦ No fuel cost
- ✦ Helps stabilize the cost of power
- ✦ Electricity produced domestically



Ontario's Renewable Energy Approval Process

- The Renewable Energy Approval (REA) process, outlined in Ontario Regulation 359/09, is a requirement for large wind power projects under Ontario's Green Energy Act
- NextEra Energy Canada will submit a Renewable Energy Approval application to the Ontario Ministry of the Environment (MOE) for each project
- The MOE will assess the application for completeness and then undertake a technical review to determine whether to issue an approval
- Other agencies, including the Ministry of Natural Resources (MNR), the Ministry of Transportation (MTO), the Ministry of Tourism, Culture and Sport (MTCS) and local conservation authorities and municipalities will provide input

Reports included in application:

Reports were submitted in draft for public review on November 8, 2012

- ✦ **Project Description Report** – to provide an overview of the project and a summary of all the required REA reports
- ✦ **Archaeology and Cultural Heritage Assessment Reports** – to identify potential effects on archaeological and cultural heritage resources
- ✦ **Natural Heritage Assessment Report** – to identify potential effects on birds, bats, other wildlife, woodlands, wetlands, areas of natural and scientific interest
- ✦ **Noise Assessment Report** – to ensure the project is in compliance with noise regulations
- ✦ **Water Body and Water Assessment Report** – to identify potential effects on streams, seepage areas and lakes
- ✦ **Construction Plan, Design and Operations, Decommissioning Reports** – to describe these activities and identify mitigation measures to address any potential effects resulting from the various project phases
- ✦ **Consultation Report** – to demonstrate how Jericho Wind, Inc. engaged local governments, Aboriginal groups and the community during the project
- ✦ **Wind Turbine Specifications** – to describe the turbine technology selected for the project

Renewable Energy in Ontario

The Green Energy and Green Economy Act

- Developed to stimulate the “green” economy in Ontario

Key Components:

- Provincial obligation to purchase green energy
- Priority grid access for renewable energy projects
- Long-term fixed-price power contracts
- Coordinated regulatory and approvals process

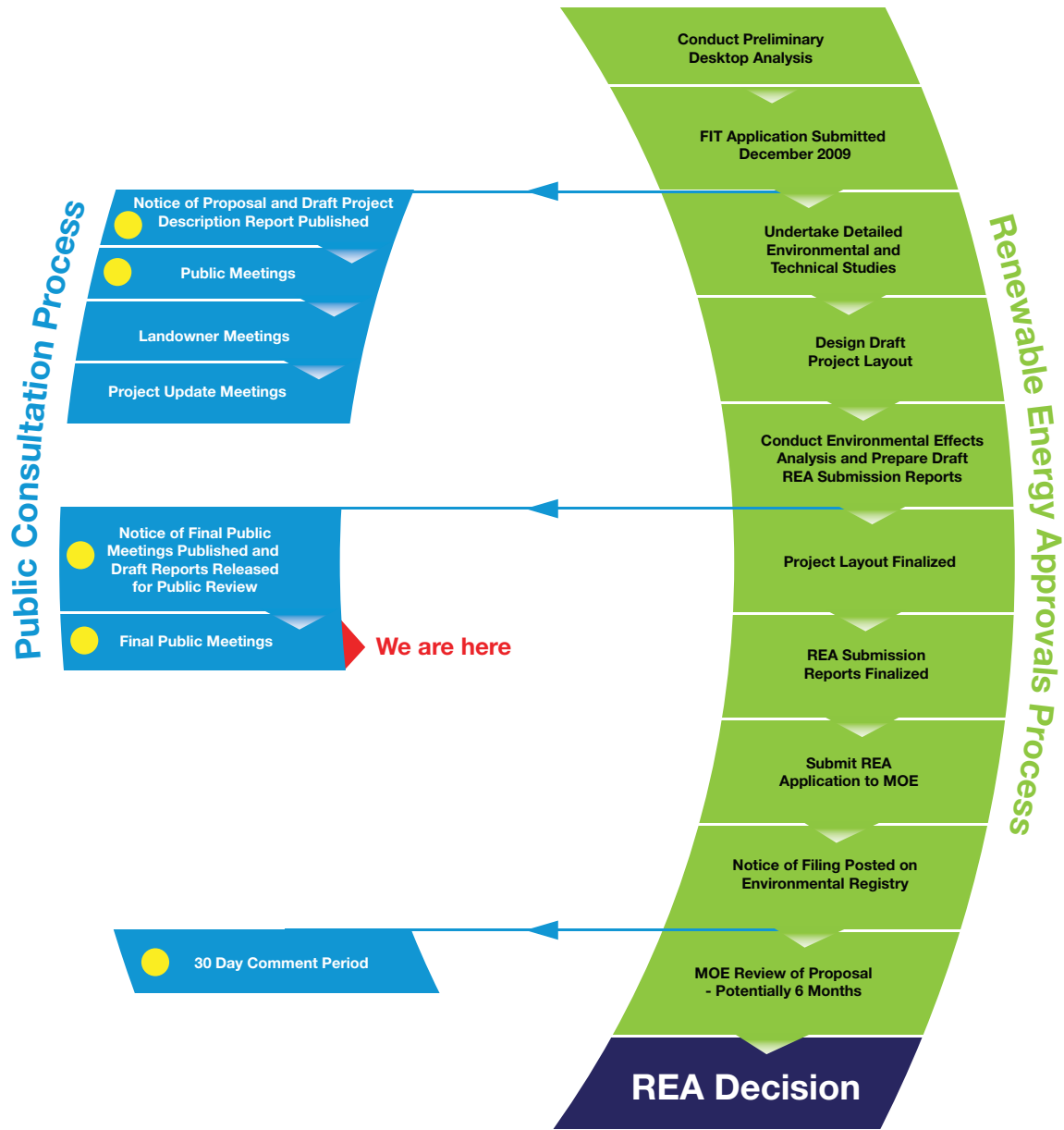


Provincial Green Energy Initiatives and the Feed-in-Tariff Program:

- Feed-in-Tariff (FIT) Program, launched by the Ontario Power Authority, is North America's first comprehensive guaranteed pricing structure for renewable electricity production
- The FIT Program offers stable prices and long-term contracts to green energy projects that encourage investment in renewable energy and economic development across the Province
- NextEra Energy Canada has six projects that were awarded FIT contracts on July 4, 2011:
 - ✦ Adelaide Wind Energy Centre
 - ✦ Bluewater Wind Energy Centre
 - ✦ Bornish Wind Energy Centre
 - ✦ East Durham Wind Energy Centre
 - ✦ Goshen Wind Energy Centre
 - ✦ Jericho Wind Energy Centre

We have two additional projects (Conestogo and Summerhaven Wind Energy Centres) which have been awarded a FIT contract by the Ontario Power Authority and have received the Renewable Energy Approval. The Conestogo Wind Energy Centre began commercial operation in December 2012. The Summerhaven Wind Energy Centre is anticipated to be in commercial operation in the summer of 2013.

Renewable Energy Approval Process



The Jericho Project

- The proposed Jericho Wind Energy Centre is located in the Municipality of Lambton Shores and the Township of Warwick in Lambton County and the Municipality of North Middlesex in Middlesex County
- The Wind Energy Centre will be able to generate up to 150 megawatts of electricity
- Although Jericho Wind, Inc. is seeking an REA for up to 97 turbine locations, approximately 92 turbines are proposed to be constructed for the Project

Facility components for the Jericho Wind Energy Centre will include:

- ✦ Turbine laydown and storage areas (including temporary staging areas, crane pads and turnaround areas surrounding each wind turbine);
- ✦ Construction laydown to provide temporary storage of construction materials, and temporary construction offices and ancillary equipment such as electrical service from the local electrical distribution line;
- ✦ A transformer substation and ancillary equipment;
- ✦ 34.5 kV electrical collection lines to connect the turbines to the proposed transformer substation and other ancillary equipment such as above-ground junction boxes;
- ✦ A 115 kV transmission line to run from the proposed Project transformer substation to the proposed Bornish switchyard. A common 115 kV transmission line will carry electricity from the proposed Adelaide, Bornish and Jericho Wind Energy Centres to Hydro One's 500 kV transmission line;
- ✦ Turbine access roads;
- ✦ Permanent meteorological towers; and
- ✦ An operations and maintenance building and ancillary equipment such as an electrical service line connected to the local distribution service.



Your Concerns... Our Response

Q: How loud are wind turbines?

A: With the evolution of modern wind turbine technology, the mechanical noise from the turbine is almost undetectable. Turbines only run when the wind is blowing and the sound of the wind masks most of the noise. What's more, wind projects in Ontario are under strict sound guidelines, as prescribed by the Ministry of the Environment. For residences in the area, the Jericho Wind Energy Centre will be quieter than many common sounds – such as a quiet room.

NextEra is committed to meeting the sound limit requirements set by the Ministry of the Environment. If concerns regarding sound level arise, we will investigate and, if necessary, remedy the situation as soon as possible.

Q: This area is a stopping point for migrating Tundra Swans. Will you consider this when deciding where to put a wind turbine?

A: Yes, we continue to consult with local organizations to understand the swans' migration route and stopover areas. This information was considered, along with environmental, local infrastructure and socio-economic information, when determining where best to place a wind turbine.

Q: Do turbines pose a danger to area wildlife (e.g., birds or bats)?

A: When properly sited, wind turbines present less of a danger to wildlife than other structures such as buildings and roads. Turbines have been located as carefully as possible to minimize any effects on wildlife. Jericho Wind, Inc. has worked closely with the relevant experts to assess any potential effects on wildlife, including birds and bats.

Q: What impact do wind turbines have on our health?

A: We take concerns about human health very seriously. Although much has been written about health effects associated with wind turbines, we have found no credible, scientifically peer-reviewed study that demonstrates a link between wind turbines and negative health effects. For more information, please review the Health and Wind Turbines information board.

Your Concerns... Our Response

Q: What effect will a wind farm have on the value of my property?

A: Based on available research, we are not aware of any credible evidence to indicate a decline in property values from the siting of a wind farm. Independent studies have been conducted by Ontario municipalities, leading universities, and other entities which have concluded that the construction of a wind facility does not detract from property values.

Q: Do wind turbines cause stray voltage?

A: Stray voltage is a low-level current or shock (typically under 10 volts) that can be caused by improper grounding or, in some cases, an ungrounded electrical system. Stray voltage is not a consequence of wind energy. It may be present in any electrical distribution system regardless of source and may be especially prevalent on working farms because of the nature of these operations.

Industry best practices will be adopted at all times to minimize the risk of stray voltage and ensure our Wind Energy Centres are built and maintained within acceptable levels, as prescribed by the local safety code. While we do not intend to connect the Jericho Wind Energy Centre to the local distribution system that serves barns and houses in the area, we are aware that transmission lines – when not properly designed – can induce current on nearby distribution lines. To address this and to minimize the impact on local distribution customers, we are already working closely with Hydro One.

Q: Who pays to decommission the turbines?

A: Jericho Wind, Inc. is responsible for any decommissioning costs. The process to decommission the turbines has been established through the Renewable Energy Approval process, which specifies the need for a Decommissioning Plan. The community has an opportunity to provide input and comment on the plan that will be part of the application filed with the Ministry of the Environment.

For a complete list of comments and questions from the public, please visit the Frequently Asked Questions sections on our website. We will also publish concerns and inquiries in the Consultation Report, which will be filed with the REA documents and posted on our website.



Aboriginal Consultation

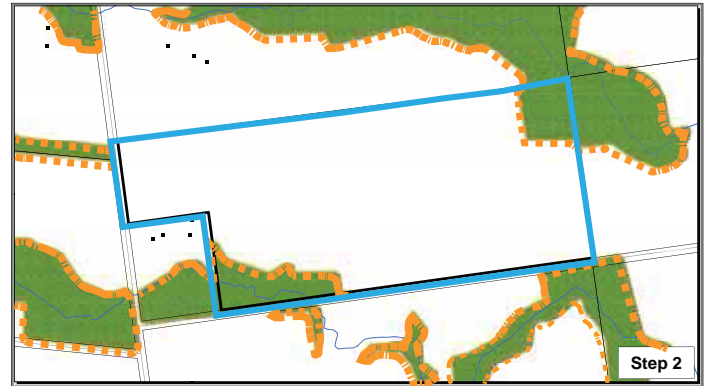
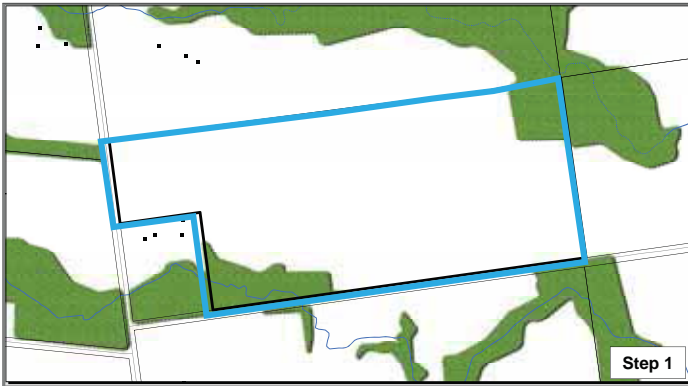
- Canada's Constitution Act, 1982, recognizes the rights of Aboriginal peoples (First Nation, Inuit and Métis)
- Ontario Regulation 359/09 has specific requirements for Aboriginal consultation
- Ontario Power Authority's Feed in Tariff program reinforces the importance of Aboriginal consultation
- Project proponents are delegated the "procedural aspects" of Aboriginal consultation
- Aboriginal consultation may include environmental, archaeological, cultural and spiritual issues
- Jericho Wind, Inc. is working closely with Aboriginal communities and leadership as required by law and good practice to:
 - Offer meaningful information about its projects
 - Seek information that helps ensure good planning to avoid or minimize impacts
 - Openly discuss issues, interests and concerns
 - Seek workable and mutually acceptable solutions
 - Foster relationships of mutual respect

Turbine Siting Process

Steps for Developing a Site Plan

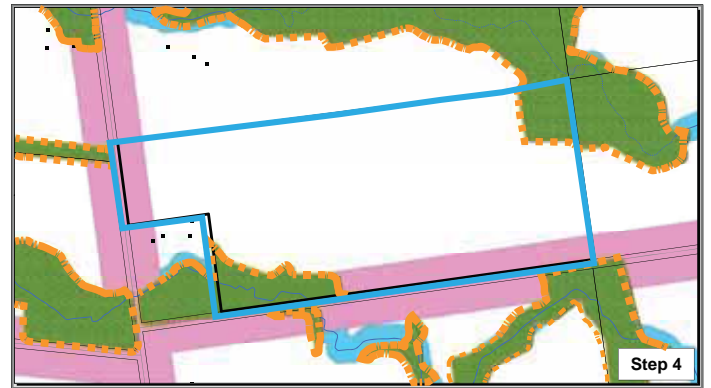
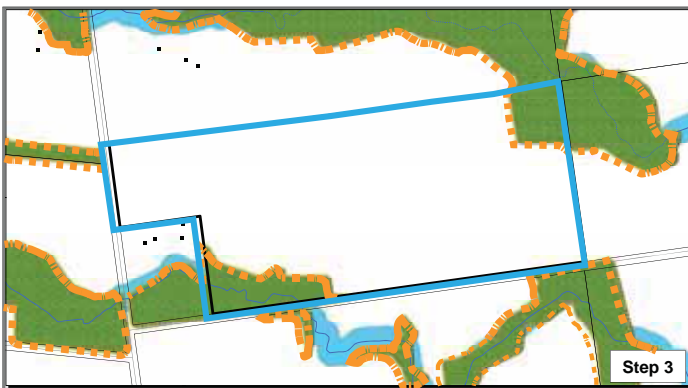
1. Identify a sufficient wind resource and study the wind regime for several consecutive years
2. Work with local landowners to option land for wind turbines and ancillary facilities (i.e., collection lines and access roads)
3. Identify technical and environmental constraints based on input from project engineers, ecologists and aquatic biologists, cultural experts, local landowners, Aboriginal groups, and government agencies
4. Identify locations to site project infrastructure by balancing these technical and environmental constraints while adhering to the setback distances prescribed by the Province (i.e., Ontario Regulation 359/09)
 - ✦ Project components can be sited within the setbacks for some terrestrial features provided that an Environmental Impact Study is completed and mitigation measures identified

Turbine Siting Process



✦ Step 1: Work with local landowners to option land

✦ Step 2: Identify natural constraints



✦ Step 3: Identify aquatic constraints

✦ Step 4: Identify local infrastructure constraints



✦ Step 5: Identify socio-economic constraints

✦ Step 6: Site turbine within remaining land available

Legend

<ul style="list-style-type: none"> ✦ Turbine Location Terrestrial Features ■ Woodlots Aquatic Features ■ Waterbody 	<ul style="list-style-type: none"> ■ Socio-Economic ■ Noise Receptor — Local Infrastructure — Major Road 	<ul style="list-style-type: none"> Setback ■ Terrestrial Setback ■ Aquatic Setback ■ Local Infrastructure Setback ■ Socio-Economic Setback
---	--	--

Construction Plan

Turbine siting and surveys

- ✦ Site preparation will include final turbine siting and surveys
- ✦ During these surveys, boundaries of turbine sites will be staked and existing buried infrastructure will be located and marked

Access roads

- ✦ Municipal and Provincial roads will be used to transport equipment to the construction sites
- ✦ Minor modifications may be required to some of the existing roads (e.g., widening the turning radius) to transport equipment
- ✦ New access roads will typically be between 10m (33 feet) and 20m (66 feet) wide during the construction phase
- ✦ No permanent paved roads will need to be constructed for the turbines
- ✦ Equipment will be delivered by truck and trailer as needed throughout the construction phase and stored at temporary laydown sites surrounding each turbine



Construction Plan

Electrical Collector System:

- ✦ This system consists of a mixture of underground cables, pad mounted transformers and a substation
- ✦ Ploughing and trenching will be used to install the underground cables
- ✦ The cabling will be buried at a depth that will not interfere with normal agricultural practices and maps of cable locations will be provided to landowners

Wind Turbines:

- ✦ Foundations will be made of poured concrete, reinforced with steel rebar to provide strength
- ✦ Each foundation will require an excavation of approximately 3 metres (10 feet) deep, and 20 metres (66 feet) by 20 metres (66 feet) square
- ✦ Only the tower base portion of the foundation will be left above ground
- ✦ The turbine will then be anchored to the foundation by large bolts set in the concrete foundation
- ✦ Turbine assembly and installation will typically require 4 - 5 days per turbine
- ✦ Following commissioning, the area surrounding the turbine will be returned to its pre-construction state



Operations and Maintenance

We believe in “prevention” versus “event response” through component condition and performance assessment

- ✦ Experienced operations and maintenance managers on site
- ✦ On-going training and mentoring programs to maintain safe and efficient operation
- ✦ Site staff supported by centralized maintenance and environmental staff
- ✦ Supported by 24/7 Fleet Performance and Diagnostic Centre
- ✦ Local operations team available to answer questions and address concerns



Health and Wind Power

- ✦ Many studies have been conducted world-wide to examine the relationship between wind turbines and possible human health effects (e.g., audible/inaudible noise, shadow flicker, electromagnetic fields (EMF)).
- ✦ Audible / Inaudible Noise: Ontario's Chief Medical Officer of Health (May 2010) conducted a review of the scientific literature related to wind turbines and public health. The review concluded that:

"while some people living near wind turbines report symptoms such as dizziness, headaches, and sleep disturbance, the scientific evidence available to date does not demonstrate a direct causal link between wind turbine noise and adverse health effects. The sound level from wind turbines at common residential setbacks is not sufficient to cause hearing impairment or other direct health effects, although some people may find it annoying."

- ✦ Shadow flicker: Scientific evidence suggests that shadow flicker from wind turbines does not pose a risk of photo-induced seizures; modern wind turbines simply don't rotate at a speed that has been linked to this condition (generally less than 20 rpm vs. over 60 rpm).
- ✦ EMF: Health Canada (2012) has stated:

"Health Canada does not consider that any precautionary measures are needed regarding daily exposures to EMFs at ELFs [extremely low frequency]. There is no conclusive evidence of any harm caused by exposures at levels found in Canadian homes and schools, including those located just outside the boundaries of power line corridors"

- ✦ Overall, health and medical agencies agree that when sited properly, wind turbines are not causally related to adverse effects*.
- ✦ Reports of annoyance by people living around wind turbines appear to be more related to variables like personal attitude and whether a person can see a turbine from their home and not a turbine-specific variable like noise.

*"Ontario doctors, nurses, and other health professionals support energy conservation combined with wind and solar power – to help us move away from coal"**.*

- ✦ Scientists and medical experts around the world continue to publish research in this area. In fact, Health Canada will be undertaking a study of wind turbine projects across the country, with results expected in 2014. It is important to note that Health Canada has not called for a moratorium on new wind projects across Canada while they undertake their research. Through our health consultants, Intrinsic, Jericho Wind, Inc. is committed to keeping informed on this issue.

*Chatham-Kent Public Health Unit, 2008; Australian Government, National Health and Medical Research Council, 2010; Australian Government, 2011; Massachusetts Department of Environmental Protection (MassDEP) and Massachusetts Department of Public Health (MDPH), 2012.

**Ontario College of Family Physicians, Registered Nurses Association of Ontario, Canadian Association of Physicians for the Environment, Physicians for Global Survival, the Asthma Society of Canada, and the Lung Association.

Archaeological Studies - Jericho Project

A Stage 1 Archaeological Assessment was conducted to establish if any known archaeological sites exist in or near the Project Location. Where the Stage 1 findings showed a potential for these, a Stage 2 Archaeological Assessment was completed to identify any archaeological resources and confirm if further studies were required.

A Stage 3 Archaeological Assessment will be conducted if a location has cultural heritage value or interest that needs further study or additional mitigation measures to protect the resource.

Stage 1 Key Findings:

- The potential for discovering Aboriginal and Euro-Canadian archaeological resources was deemed to be moderate to high
- Important features included: drinking water sources, areas of flat landscape, soils for agricultural purposes, known archaeological sites and Euro-Canadian historic documents
- Evidence exists for both Aboriginal and Euro-Canadian use of the area over time

Stage 2 Key Findings:

- 221 archaeological sites were identified, including: 187 pre-contact Aboriginal sites, 33 historic Euro-Canadian sites and 1 multi-component site
- Stage 3 Archaeological Assessments were recommended for approximately 73 sites, meaning that the locations have cultural heritage value or interest that requires further investigation. That work will be completed prior to the construction of the project
- No further investigation was deemed necessary at any of the other sites



Cultural Heritage – Jericho Project

- A Cultural Heritage Assessment was conducted using historic research, mapping, field surveys and consultation with local historians
- No protected properties or protected cultural heritage landscapes were found in the Project Location
- A total of 81 participating properties were identified as containing structures older than 40 years. These properties contained a total of 118 potential built heritage resources; 66 residences, 51 barns and one institutional structure. Of these potential resources, 89 (42 residences, 46 barns and one institutional structure) were identified as having cultural heritage value or interest according to O. Reg. 09/06.
- No further mitigation is recommended as it was determined that there are no anticipated direct or indirect impacts as a result of the undertaking



Water – Jericho Project

- A Water Assessment was conducted to identify water bodies within 120m of the Project Location. A water body includes a lake, permanent stream, intermittent stream and seepage area, defined under O.Reg. 359/09.
- 116 water bodies were identified within 120m of the Project Location through desktop research and field investigations.
- Key Findings
 - ✦ 25 water bodies are located within 120m of turbines;
 - ✦ 62 are crossed by a collection line, with an additional 25 located within 120m of a collection line;
 - ✦ 19 are crossed by an access road, with an additional 24 located within 120m of an access road;
 - ✦ 17 are crossed by overhead wires for a transmission line and 10 are located within 120m of the transmission line;
 - ✦ 2 are located within 120m of the substation and laydown area; and
 - ✦ 2 are located within 120m of meteorological towers.

Potential Effects and Mitigation

The table below presents a summary of the potential effects on water bodies and proposed mitigation measures:

Project Phase	Potential Effects	Mitigation Measures
Construction/ Decommissioning	Erosion and sedimentation from clearing vegetation	Erosion blankets, erosion control fencing and straw bales will be used to control erosion and prevent soil from entering watercourse.
	Degradation of fish habitat from access roads crossing water courses	Culverts will be designed and installed in a way to prevent barriers to fish movement.
	Soil compaction which could increase water runoff into watercourses	Changes in land contours and natural drainage will be minimized. Temporary storage basins will be installed to allow water infiltration, or permanent stormwater management facilities will be established as necessary.
Operations	Water contamination from accidental spills associated with maintenance activity (unlikely to occur).	A Spill response plan will be developed and an emergency spill kit kept on site. Any spills will be reported to the Ministry of the Environment and local municipalities.

Natural Heritage - Jericho Project

- Information was gathered to identify and investigate natural features such as provincial parks, wetlands, woodlands or wildlife (e.g., bird or bat) habitats within 120m of the Project Location. Features were evaluated for significance, according to provincial criteria. Where significance was established an Environmental Impact Study (EIS) was conducted.
- The EIS identified negative effects on the environment, proposed mitigation measures, identified residual effects and their significance, and described how the Environmental Effects Monitoring Plan and the Construction Plan address any negative environmental effects.
- The following features were identified as significant:
 - ✦ 29 wetlands;
 - ✦ 73 woodlands; and
 - ✦ 25 types of significant wildlife habitat (e.g., amphibian breeding habitats, rare forest types, bat maternity colonies, waterfowl stopover and staging habitat, deer wintering areas, woodland raptor nesting habitat.)
- For each natural heritage feature identified as significant, potential effects were assessed and mitigation measures/monitoring commitments proposed depending on the type of project infrastructure affecting the feature. The table below presents a summary of the potential effects and mitigation.

Potential Effects and Mitigation

Project Phase	Potential Effect	Mitigation Measures
Construction/ Decommissioning	Disturbance to wildlife from construction activities	Schedule construction activities near significant wildlife habitat to take place outside sensitive timing windows for wildlife (e.g., breeding season, migration period).
	Damage to vegetation	Protective fencing installed to ensure work is kept within identified zones. Periodic monitoring will take place during construction to ensure compliance.
	Damage to wetland vegetation from changes in drainage patterns	Minimize paved surfaces and limit changes in land contours to maintain current drainage patterns. Conduct site inspection following grading activities near significant wetlands and wildlife habitat to ensure compliance.
	Changes in water levels from short-term construction dewatering	Schedule dewatering activities to avoid the sensitive timing windows for wetland vegetation and wildlife. Conduct daily monitoring during dewatering. Site-specific mitigation will be implemented if required.
Operations	Disturbance or mortality to wildlife (e.g., birds and bats) from turbine collisions.	Operational mitigation when the chances for bird or bat collisions are increased. Monitoring will include three years of post-construction mortality surveys for birds and bats, and disturbance effects to significant wildlife habitat. Results will be submitted to the MNR.

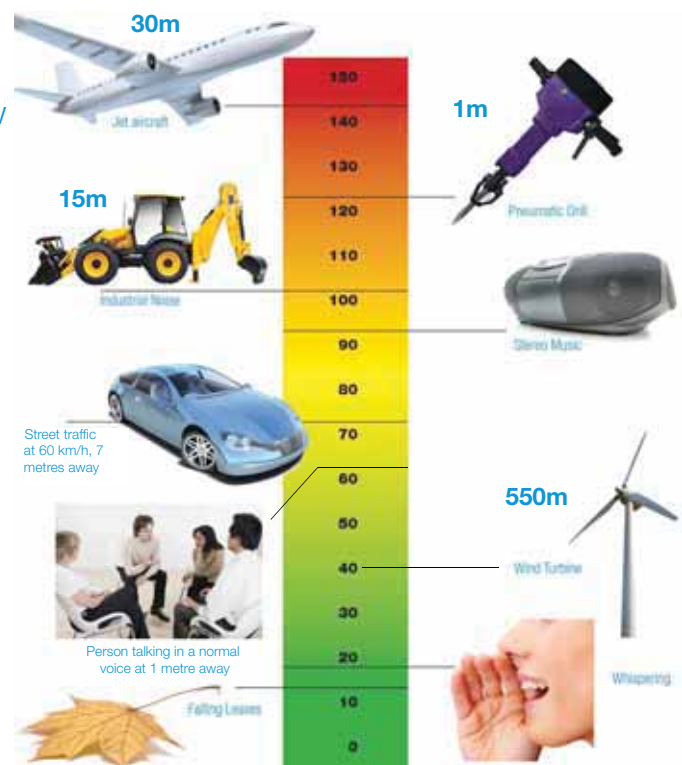
Noise Studies - Jericho Project

Noise studies were conducted to help determine the final turbine layout. The noise studies comprise the following steps:

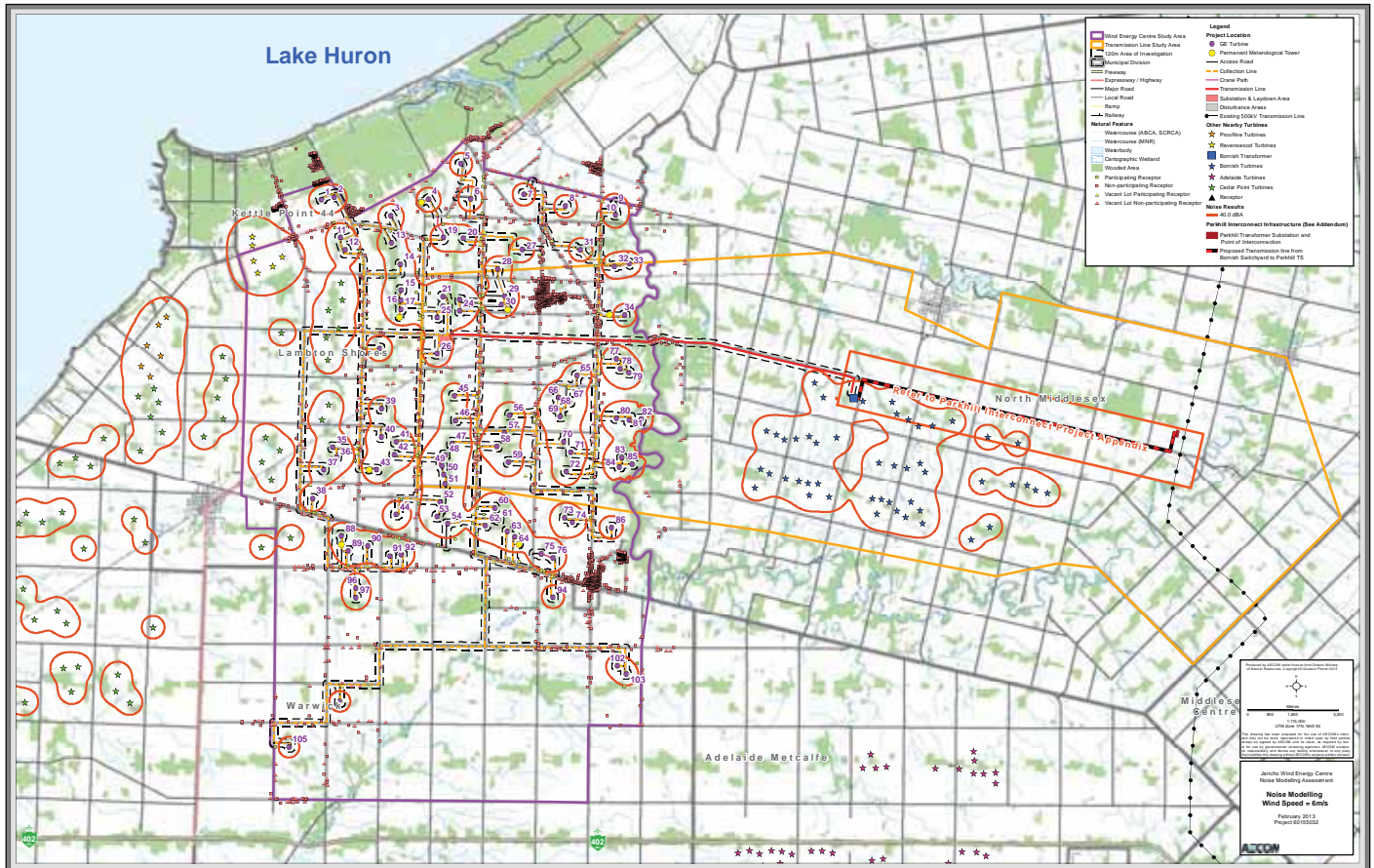
- **Step 1:** Identify points of reception – dwellings (typically houses) that are within 2km of the wind turbines
- **Step 2:** Obtain wind turbine specifications and noise emission ratings from the manufacturer
- **Step 3:** Using an initial wind turbine layout, predict the noise levels generated at points of reception using a noise prediction model to ensure allowable limits are not exceeded. The noise model is designed in accordance with standards set by the Ministry of the Environment (MOE)
- **Step 4:** Using the noise model results, revise the turbine layout as necessary to ensure that the final turbine layout meets all applicable noise guidelines

Noise requirements under Renewable Energy Approval Regulation (O.Reg. 359/09)

- Wind turbines will be set back from dwelling units that are not part of the project by at least 550m (1804ft) and must be at or below 40dBA at 6m/s.
- Noise from turbines must meet provincial noise limits as outlined in MOE publication 4709e “Noise Guidelines for Wind Farms”



Noise Studies - Jericho Project



Wind speed of 6 m/s

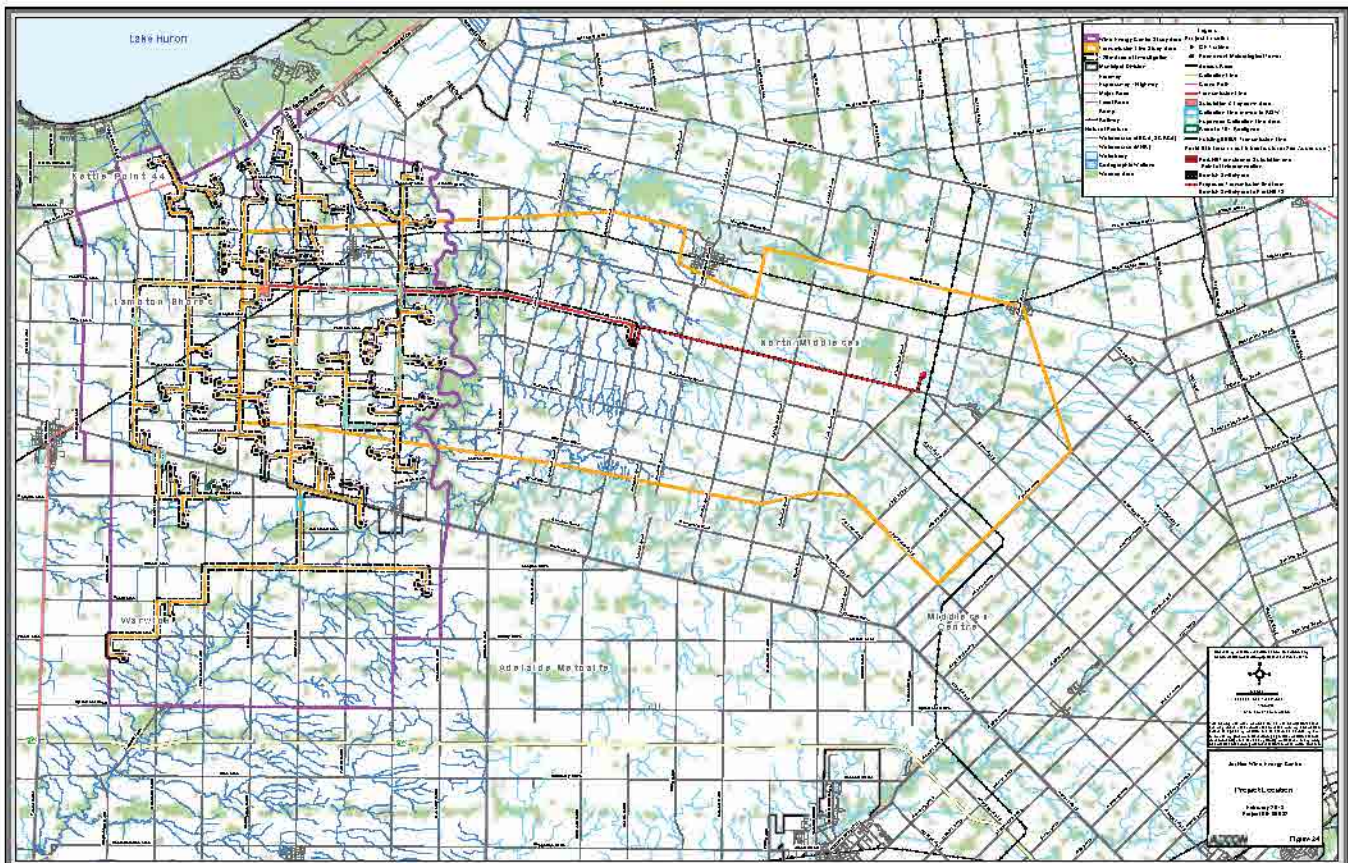
Noise Assessment results

- Modelling of predicted noise levels from the proposed turbines, transformer substation, the existing Ravenswood Wind Farm, and the proposed Cedar Point Wind Power Project and Bornish Wind Energy Centre was undertaken. The results were as follows:
 - ✦ All non-participating residences (vacant or occupied) comply with MOE guidelines for wind turbines – they are predicted to be below the MOE noise criteria and are greater than 550m from the nearest wind turbine;
 - ✦ A noise barrier will ensure that the transformer substation is in compliance with MOE noise limits.

WIND ENERGY CENTRE - OPEN HOUSE

Modifications to the Project Since Circulation of Draft REA Reports

- Modifications have been made to the Project Location since the draft reports were circulated in November 2012.
 - ✦ Access road to Turbine 91 has been realigned to travel directly south from the turbine;
 - ✦ In one location, the collection line has been moved off of private property and into the adjacent right-of-way; and
 - ✦ In some locations, the collection line may be moved from the right-of-way to adjacent private property.
- These modifications do not result in any new effects to those previously identified through the various studies conducted. Please see the Jericho Project Modifications Report for further information.



Shadow Flicker - Jericho Project

- Shadow flicker analysis is not required under O.Reg. 359/09; however, it has been undertaken to complement the REA application for the Project.
- Shadow flicker is a temporary condition resulting from the sun casting intermittent shadows from the rotating blades of a wind turbine onto a sensitive receptor such as a window.

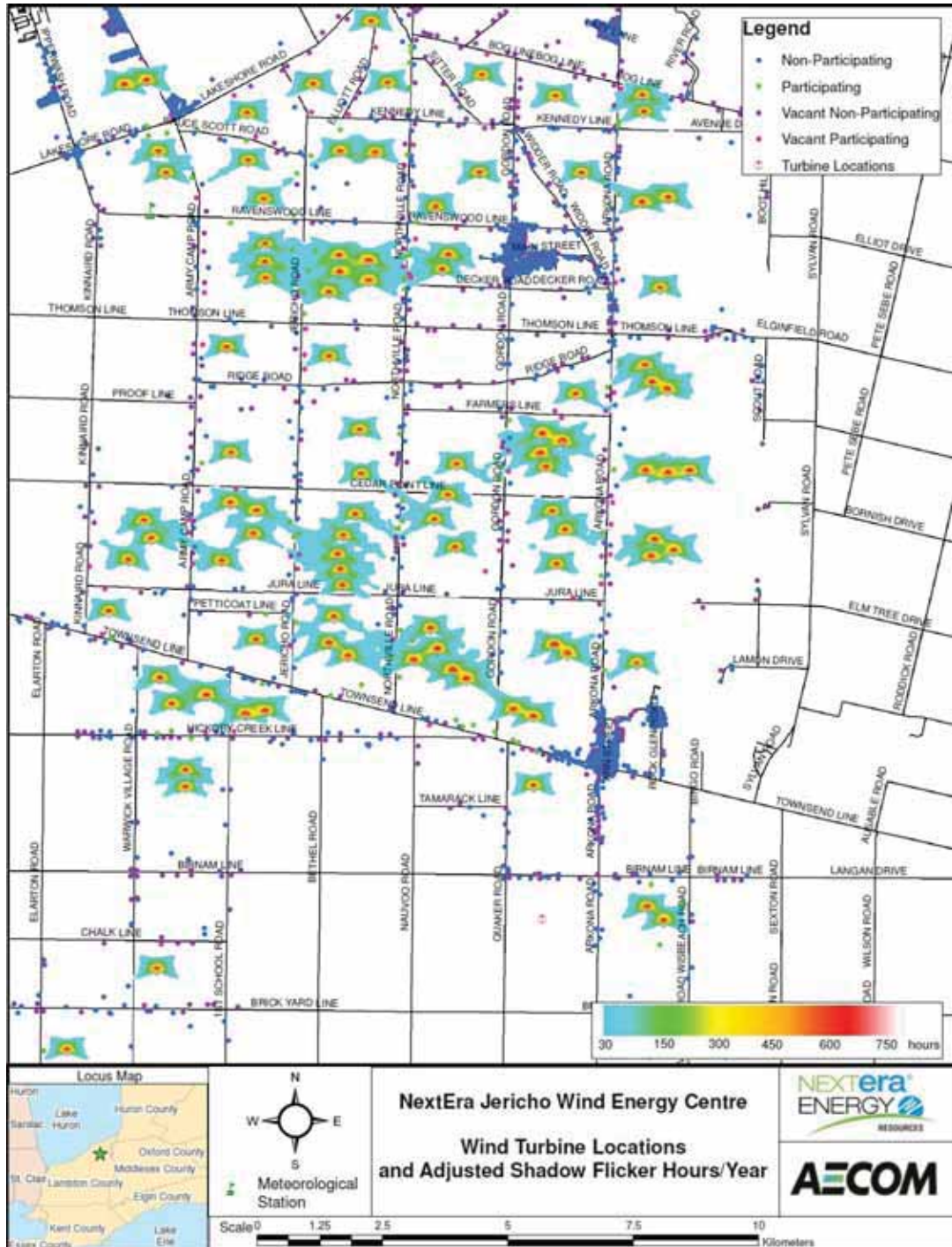
For shadow flicker to occur, the following criteria must be met:

1. The sun must be shining and not obscured by any cloud cover.
2. The wind turbine must be between the sun and the shadow receptor.
3. The wind turbine must be facing directly towards (or away from) the sun.
4. The line of sight between the turbine and the shadow receptor must be clear. Obstacles, such as trees, buildings or other structures, will prevent or reduce shadow flicker from occurring at the receptor.
5. The receptor has to be close enough to the turbine to be in the shadow.
6. The turbine is operational and not stationary due to a lack of wind or maintenance activities.

Shadow Flicker Assessment and Results

- To assess the effects of shadow flicker, hourly meteorological data, terrain features, receptor, and turbine locations were considered to show the predicted amount of hours when shadow flicker could occur.
- The worst case maximum shadow flicker per day is 1.37 hours and the worst case maximum shadow flicker per year is 44 hours
- This is a conservative analysis that does not account for maintenance time, winds less than 3 m/s when the turbines will not operate, or that the turbine will rarely be directly facing the sun which will shorten the shadow from the turbine blades.

Shadow Flicker Contour Map - Jericho Project



Decommissioning

- The anticipated life of the project is approximately 30 years. Decommissioning of the turbines will occur following the operations phase. A plan has been developed to dismantle or decommission the Project and to restore the land and manage excess water or waste.
- Decommissioning will be done in accordance with the Ontario Health and Safety Act and any applicable municipal, provincial and federal regulations and standards.
- The following components will be removed during dismantling:
 1. Turbines;
 2. Overhead lines and poles; and
 3. Transformer substation.

Restoration of land and water

- All areas, including the access roads, transformer pads and crane pads will be restored as much as practical to their original condition with native soils and seeding.
- There is the option for turbines to be “re-powered”, meaning that components could be replaced to extend the life of the Project and delay decommissioning. This is optional and turbines may still be decommissioned



Construction of a Transmission System

- Transmission structures will typically be single poles made of metal, wood, or concrete.
- Poles will be approximately 18 to 27 metres (60 to 90 feet) in height.
- A typical span between poles will be 91 to 182 metres (300 to 600 feet).
- Transmission lines must be constructed to standards outlined by the Province and/or electrical codes.

Transmission Approvals Process

- Transmission lines (lines with voltages higher than 50 kV) that are longer than 2km require a Leave to Construct from the Ontario Energy Board.
- This process examines the need for the line and the proposed routing to ensure that the priorities given to the Ontario Energy Board by the government are met.
- The line is also permitted as part of the Renewable Energy Approval (REA) process.
- Natural heritage and archaeological studies have been conducted along the proposed transmission line route including:
 - ✦ Vegetation studies;
 - ✦ Aquatic habitat assessments; and
 - ✦ Birds, bat and wildlife studies.

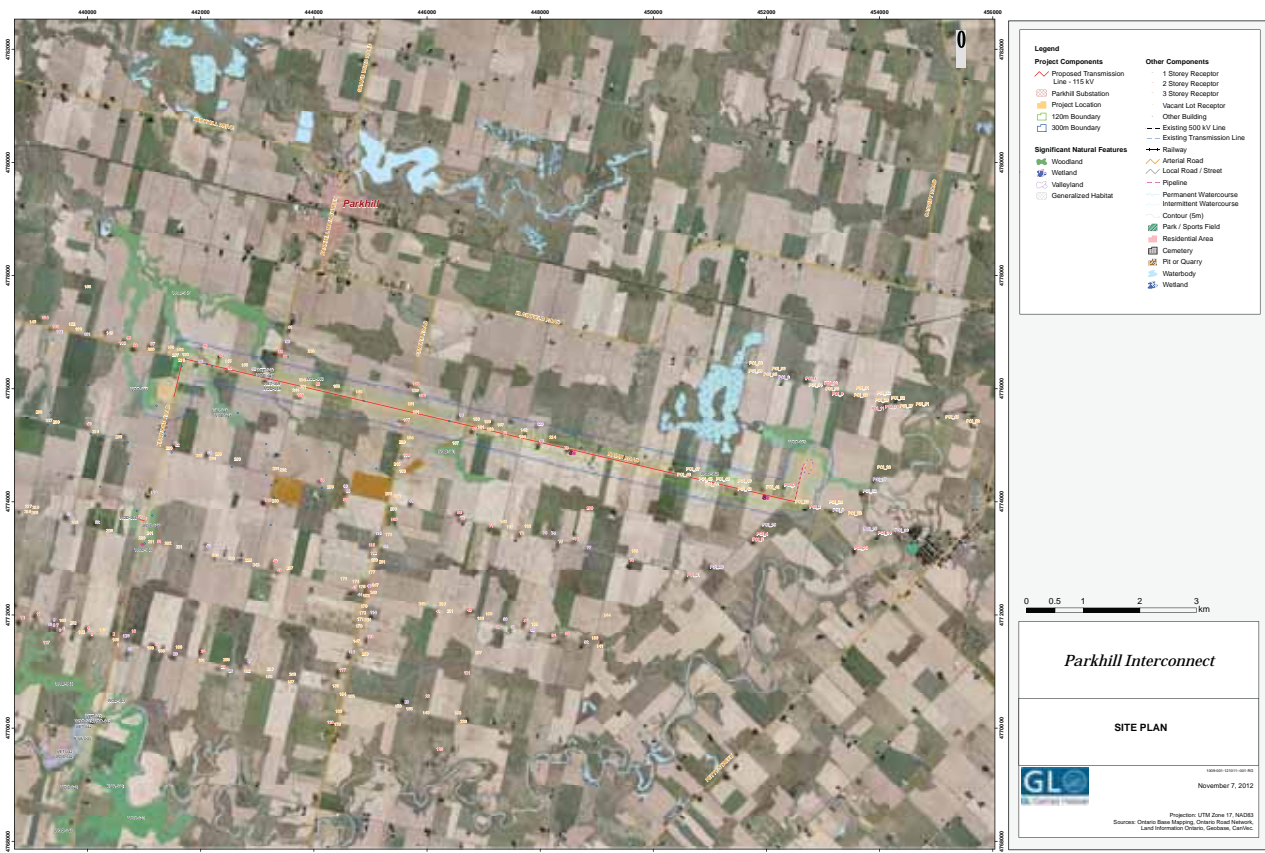
Integration with the Parkhill Interconnect Project

- The proposed Jericho Wind Energy Centre includes a 115 kV transmission line to run from the proposed Project transformer substation to the proposed Bornish switchyard
 - ✦ From this point the proposed Jericho Project will make use of facility components known as the Parkhill Interconnect Project

The Parkhill Interconnect Project

- The Parkhill Interconnect Project will consist of the following facility components:
 - ✦ A switchyard known as the Bornish switchyard
 - ✦ A substation known as the Parkhill Substation
 - ✦ A 115 kV transmission line to run from the Bornish switchyard to the Parkhill Substation
 - ✦ A connection from the Parkhill Substation to Hydro One's Evergreen switchyard and on to the existing Hydro One 500 kV transmission line

The figure below shows the proposed Parkhill Interconnect Project:



Construction Plan

- A construction plan has been developed to detail all the activities that are part of the Project's construction phase. This plan includes details of any potential effects, the appropriate mitigation measures and ongoing monitoring commitments.
- The schedule below shows the anticipated construction schedule for the Project. Construction is expected to start in fall 2013 and last between 6 and 12 months.

(Activity)	MO	M1	M2	M3	M4	M5	M6
Surveying (prior to construction)	●						
Geotechnical Sampling (prior to construction)	●						
Land Clearing and Construction of Access Roads		●	●				
Temporary Crane Paths			●				
Installation of Culverts		●					
Construction of Laydown Area			●				
Turbine Site and Crane Pad Construction		●	●	●			
Delivery of Equipment		●	●	●	●	●	●
Construction of Turbine Foundations				●			
Wind Turbine Assembly and Installation				●	●	●	●
Construction of Electrical Collector System						●	●
Construction of Transformer Substation					●	●	●
Construction of Operations Building						●	●
Land clean up and Reclamation		●	●	●	●	●	●
Turbine Commissioning							●

Next Steps

REA Process

- The final REA reports will be submitted following the public open houses which will initiate the Ministry of the Environment's review.
- After the MOE deems the REA complete, final reports will be made available online at www.NextEraEnergyCanada.com for comment by the public and by stakeholders.

Other Approvals Required Before Construction

- In addition to the REA, permits and certificates of approval may be required from approval agencies before construction can begin. These may include:
 - ✦ Archaeological Clearance from the Ontario Ministry of Tourism, Culture and Sport (MTCSS);
 - ✦ Fisheries Act Authorizations from the Federal Department of Fisheries and Oceans (DFO);
 - ✦ Aeronautical Obstruction Clearance from Transport Canada;
 - ✦ Development, Interference with Wetlands and Alterations to Shorelines and Watercourses Permit from the conservation authorities; and
 - ✦ Other permits or authorizations from the Ontario Ministry of Natural Resources (MNR) and local municipalities.

***Please visit www.NextEraEnergyCanada.com
for more details on the progress of the project***

Thank you for Attending!

- ✦ Thank you for attending this evening's Final Public Meeting
- ✦ Your input is important to us: please fill out an exit questionnaire and either leave it with us tonight or mail it to us using the contact information below
- ✦ Should you have any further questions or comments, please do not hesitate to contact us:

E-mail: Jericho.Wind@NextEraEnergy.com

Phone: 1-877-257-7330

Mail: Derek Dudek
Community Relations Consultant
NextEra Energy Canada, ULC
390 Bay Street, Suite 1720
Toronto, ON, M5H 2Y2



Our environmental consultants:

Jericho Wind Energy Project

AECOM

Marc Rose, Project Manager

905-477-8400, Ext. 388

Marc.Rose@aecom.com

WIND ENERGY CENTRE - OPEN HOUSE

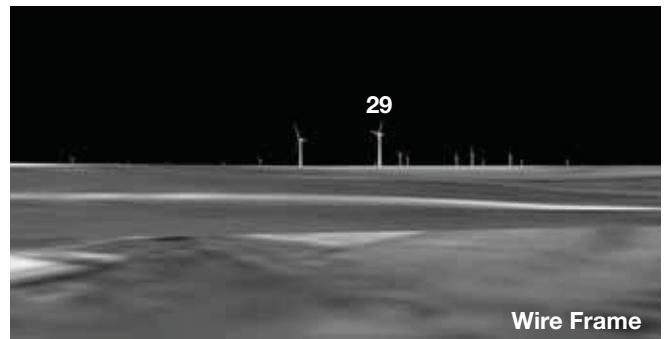
Visual Simulation: North of Thedford Looking West



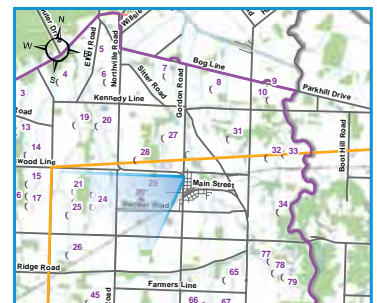
Visual Simulation



Original Photo



Wire Frame



WIND ENERGY CENTRE - OPEN HOUSE

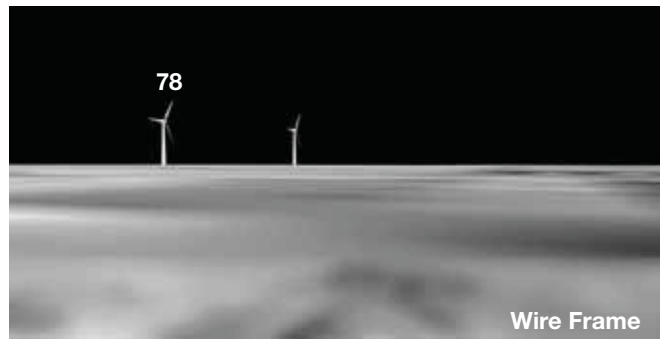
Visual Simulation: Arkona Road Looking East



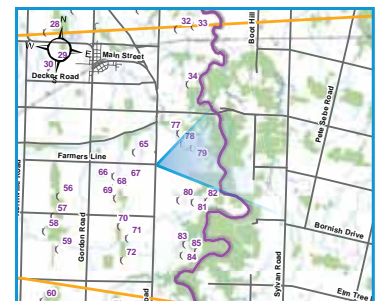
Visual Simulation



Original Photo

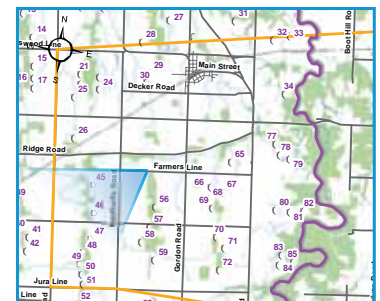
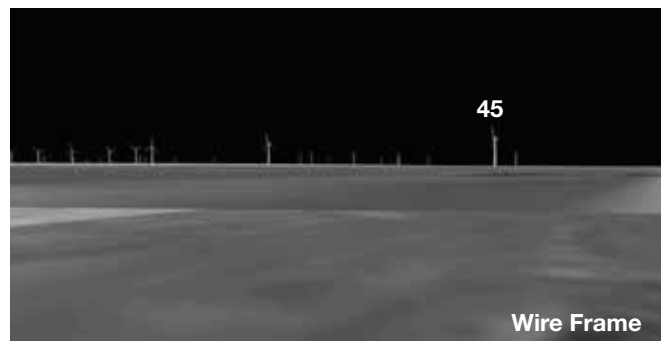


Wire Frame



WIND ENERGY CENTRE - OPEN HOUSE

Visual Simulation: Farmer Line Road Looking West



WIND ENERGY CENTRE - OPEN HOUSE

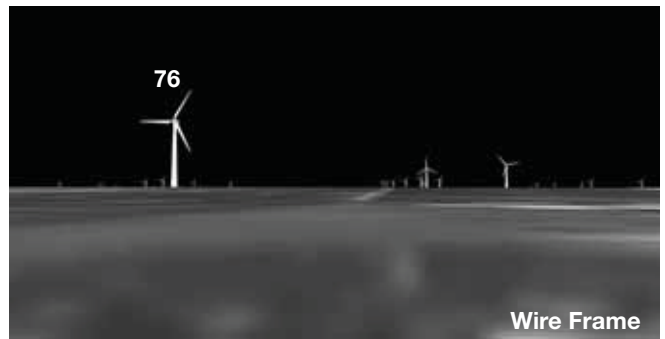
Visual Simulation: Townsend Line Looking North



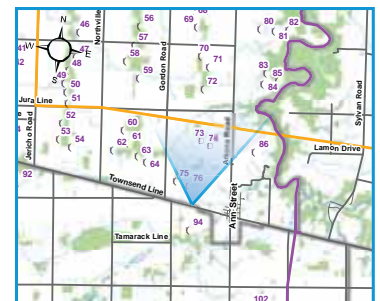
Visual Simulation



Original Photo



Wire Frame



WIND ENERGY CENTRE - OPEN HOUSE

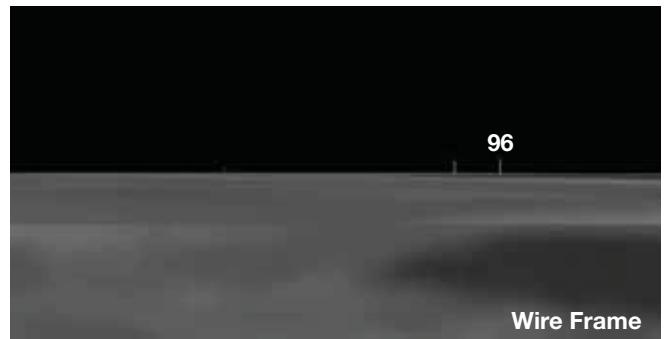
Visual Simulation: Townsend Line Looking West



Visual Simulation



Original Photo



Wire Frame



Your comments will be considered. We are collecting this information to help us understand and address your concerns about the Project. Comments will become part of the public record with the exception of personal information.

1. Did the information at the meeting meet your expectations?

- Yes
Somewhat
No

Please explain: there were no maps which evidenced the 550m setbacks from residential homes which are part of the project

2. If you asked questions during the meeting did you get a satisfactory response?

- Yes
Didn't speak to anyone
Somewhat
No

Please explain: the individuals present were professional and helpful however I remain concerned re placement of wind turbines #9 and #10

3. After attending the meeting, how do you feel about the Project?

- Supportive
Undecided
Undecided and would like more information
Non supportive

Please explain and let us know what other information you would like to receive: wind turbines #9 and #10 are approximately 550m from my house and the barn in which we have livestock

4. What topics would you like to learn more about? (check all that apply)

- Aboriginal interests
Socio-economic
Environment
Human Health
Community Partnerships
Transmission
Project Details
Other (Specify)

loss of income due to potential reduced fertility of animals (sows) during construction of proposed turbines and ongoing potential noise thereafter.

Jericho Wind Energy Centre



5. Please provide your comments or questions in the space provided below:

Tessica Mackay Wind was both professional and well informed however I remain concerned about the min setback requirements in relation to the swans habitat located in the vicinity of Bay Line in particular both in relation to the flight path and staging ground [redacted] explained the eng principles re construction of wind turbine But I remain concerned about noise and effect of noise during construction on my livestock they are very sensitive to changes and I am concerned about reduced fertility rate and general stress on animals I am also concerned about the placement of wind turbines # [redacted] near [redacted] as [redacted] within 550m of my house I would like them moved away from my residence and livestock and this area is in a flood plain and I have provided [redacted] photographs to ~~Jessica~~ and Derek Dudek which evidence the area in question underwater during a spring flood in the 1980s Derek Dudek respectfully answered my questions and facilitated providing information from other consultants present However, I would request that turbine [redacted] in particular

If you would like to be kept informed about the status of the Jericho Wind Energy Project, please provide your contact information below

Name: [redacted]
Street Address: [redacted]
City/Province: [redacted]
Postal Code: [redacted] Email: [redacted]

To learn more about the Project, or to send your completed comment form to us, please contact:

Ross Groffman
Project Director
NextEra Energy Canada, ULC
390 Bay Street, Suite 1720
Toronto, Ontario M5H 2Y2

Toll Free: 1-877-257-7330
Email: Jericho.Wind@NextEraEnergy.com
Website: www.NextEraEnergyCanada.com

~~Dudek~~

Be moved away from my farm as possible and in fact I suggest that neither turbine be constructed

Jericho Wind Energy Centre



COMMENT FORM • February 6-8, 2013

Your comments will be considered. We are collecting this information to help us understand and address your concerns about the Project. Comments will become part of the public record with the exception of personal information

1. Did the information at the meeting meet your expectations?

- Yes
- Somewhat
- No

Please explain: _____

2. If you asked questions during the meeting did you get a satisfactory response?

- Yes
- Didn't speak to anyone
- Somewhat
- No

Please explain: _____

3. After attending the meeting, how do you feel about the Project?

- Supportive
- Undecided
- Undecided and would like more information
- Non supportive

Please explain and let us know what other information you would like to receive: _____

4. What topics would you like to learn more about? (check all that apply)

- Aboriginal interests
- Socio-economic
- Environment
- Human Health
- Community Partnerships
- Transmission
- Project Details
- Other (Specify) _____

How would I benefit from getting information on any of these topics from NextEra? The information provided by a company proposing to build an industrial wind facility is bound to be biased towards furthering that goal.

Property Values
Land Use Concerns
Property Boundary
Infringements by
proposed turbine
sites)

Your comments will be considered. We are collecting this information to help us understand and address your concerns about the Project. Comments will become part of the public record with the exception of personal information

1. Did the information at the meeting meet your expectations?

- Yes
Somewhat
No

Please explain:

2. If you asked questions during the meeting did you get a satisfactory response?

- Yes
Didn't speak to anyone
Somewhat
No

Please explain: People wearing nametags frequently passed me off to another so called "expert". Then I would repeat my question and listen to a detailed response which usually

3. After attending the meeting, how do you feel about the Project?

- Supportive
Undecided
Undecided and would like more information
Non supportive

Please explain and let us know what other information you would like to receive:

4. What topics would you like to learn more about? (check all that apply)

- Aboriginal interests
Socio-economic
Environment
Human Health
Community Partnerships
Transmission
Project Details
Other (Specify)

skirted the issue, I guess to leave me with the impression that I should trust that all is well because the "experts" at a NextEra meeting say so. Instead, it reinforced my opinion that these meetings are all for show, so NextEra can simply check off that the meeting occurred and move forward in the approval process.

Jericho Wind Energy Centre



COMMENT FORM • February 6-8, 2013

Your comments will be considered. We are collecting this information to help us understand and address your concerns about the Project. Comments will become part of the public record with the exception of personal information.

1. Did the information at the meeting meet your expectations?

- Yes
- Somewhat
- No

Please explain: _____

2. If you asked questions during the meeting did you get a satisfactory response?

- Yes
- Didn't speak to anyone
- Somewhat
- No

Please explain: _____

3. After attending the meeting, how do you feel about the Project?

- Supportive
- Undecided
- Undecided and would like more information
- Non supportive

Please explain and let us know what other information you would like to receive: _____

4. What topics would you like to learn more about? (check all that apply)

- | | |
|---|---|
| <input type="checkbox"/> Aboriginal interests | <input type="checkbox"/> Community Partnerships |
| <input type="checkbox"/> Socio-economic | <input type="checkbox"/> Transmission |
| <input type="checkbox"/> Environment | <input type="checkbox"/> Project Details |
| <input type="checkbox"/> Human Health | <input type="checkbox"/> Other (Specify) _____ |
- _____

5. Please provide your comments or questions in the space provided below:

If you would like to be kept informed about the status of the Jericho Wind Energy Project, please provide your contact information below

Name: _____

Street Address: _____

City/Province: _____

Postal Code: _____ **Email:** _____

To learn more about the Project, or to send your completed comment form to us, please contact:

Ross Groffman
Project Director
NextEra Energy Canada, ULC
390 Bay Street, Suite 1720
Toronto, Ontario M5H 2Y2

Toll Free: 1-877-257-7330
Email: Jericho.Wind@NextEraEnergy.com
Website: www.NextEraEnergyCanada.com

Jericho Wind Energy Centre



COMMENT FORM • February 6-8, 2013

Your comments will be considered. We are collecting this information to help us understand and address your concerns about the Project. Comments will become part of the public record with the exception of personal information.

1. Did the information at the meeting meet your expectations?

- Yes
- Somewhat
- No

Please explain: _____

2. If you asked questions during the meeting did you get a satisfactory response?

- Yes
- Didn't speak to anyone
- Somewhat
- No

Please explain: Was disappointed with the actual number
of setbacks from property lines
see other side?

3. After attending the meeting, how do you feel about the Project?

- Supportive
- Undecided
- Undecided and would like more information
- Non supportive

Please explain and let us know what other information you would like to receive: _____

What to do to make a difference?
As in changing position (setback) of turbines

4. What topics would you like to learn more about? (check all that apply)

- | | |
|---|---|
| <input type="checkbox"/> Aboriginal interests | <input type="checkbox"/> Community Partnerships |
| <input type="checkbox"/> Socio-economic | <input type="checkbox"/> Transmission |
| <input type="checkbox"/> Environment | <input type="checkbox"/> Project Details |
| <input type="checkbox"/> Human Health | <input type="checkbox"/> Other (Specify) _____ |
- _____

5. Please provide your comments or questions in the space provided below:

My biggest concern is towards us & people that didn't sign up for the project yet get the turbines almost as close to us as some of the people who actually signed up for it. There was reasoning behind it not to sign up. We get our livelihood from our farm and like to keep it that way. Too much farmland gets taken out of production also.

If you would like to be kept informed about the status of the Jericho Wind Energy Project, please provide your contact information below

Name: [Redacted]
Street Address: [Redacted]
City/Province: [Redacted] Email: [Redacted]
Postal Code: [Redacted]

To learn more about the Project, or to send your completed comment form to us, please contact:

Ross Groffman
Project Director
NextEra Energy Canada, ULC
390 Bay Street, Suite 1720
Toronto, Ontario M5H 2Y2

Toll Free: 1-877-257-7330
Email: Jericho.Wind@NextEraEnergy.com
Website: www.NextEraEnergyCanada.com

The setback from property lines should be a minimum of the length of the turbine incl. the blades.

* My request is to setback the turbine # [Redacted] further from the property line! min. 200 meter

Jericho Wind Energy Centre



COMMENT FORM • February 6-8, 2013

Your comments will be considered. We are collecting this information to help us understand and address your concerns about the Project. Comments will become part of the public record with the exception of personal information

1. Did the information at the meeting meet your expectations?

- Yes
- Somewhat
- No

Please explain: was hoping better public turnout

2. If you asked questions during the meeting did you get a satisfactory response?

- Yes
- Didn't speak to anyone
- Somewhat
- No

Please explain: got full answers but not which I liked

3. After attending the meeting, how do you feel about the Project?

- Supportive
- Undecided
- Undecided and would like more information
- Non supportive

Please explain and let us know what other information you would like to receive: Would like

set backs from property lines to be ~~restricted~~ equal to height of turbines

4. What topics would you like to learn more about? (check all that apply)

- | | |
|---|--|
| <input type="checkbox"/> Aboriginal interests | <input type="checkbox"/> Community Partnerships |
| <input type="checkbox"/> Socio-economic | <input type="checkbox"/> Transmission |
| <input type="checkbox"/> Environment | <input type="checkbox"/> Project Details |
| <input type="checkbox"/> Human Health | <input checked="" type="checkbox"/> Other (Specify) <u>building restrictions restrictions</u> |

Jericho Wind Energy Centre



5. Please provide your comments or questions in the space provided below:

- location of turbine [redacted] is 66 mtrs from our property
The if something happens to close should be as far away
as its max height so 140 mtrs then we are not involved
~~with a safety~~ with a safety
Just make turbines away from people who didn't sign
and closer to the ones that did sign.

If you would like to be kept informed about the status of the Jericho Wind Energy Project, please provide your contact information below

Name: [redacted]
Street Address: [redacted]
City/Province: [redacted]
Postal Code: [redacted] Email: [redacted]

To learn more about the Project, or to send your completed comment form to us, please contact:

Ross Groffman
Project Director
NextEra Energy Canada, ULC
390 Bay Street, Suite 1720
Toronto, Ontario M5H 2Y2

Toll Free: 1-877-257-7330
Email: Jericho.Wind@NextEraEnergy.com
Website: www.NextEraEnergyCanada.com

Jericho Wind Energy Centre



COMMENT FORM • February 6-8, 2013

Your comments will be considered. We are collecting this information to help us understand and address your concerns about the Project. Comments will become part of the public record with the exception of personal information

1. Did the information at the meeting meet your expectations?

- Yes
- Somewhat
- No

Please explain: _____

2. If you asked questions during the meeting did you get a satisfactory response?

- Yes
- Didn't speak to anyone
- Somewhat
- No

Please explain: Answers were clear and well articulated

3. After attending the meeting, how do you feel about the Project?

- Supportive
- Undecided
- Undecided and would like more information
- Non supportive

Please explain and let us know what other information you would like to receive: The cost of wind power is too expensive for Ontario. The technology is sound but too expensive. its killing us.

4. What topics would you like to learn more about? (check all that apply)

- | | |
|---|---|
| <input type="checkbox"/> Aboriginal interests | <input type="checkbox"/> Community Partnerships |
| <input type="checkbox"/> Socio-economic | <input type="checkbox"/> Transmission |
| <input type="checkbox"/> Environment | <input checked="" type="checkbox"/> Project Details |
| <input type="checkbox"/> Human Health | <input type="checkbox"/> Other (Specify) _____ |
- _____

Jericho Wind Energy Centre



5. Please provide your comments or questions in the space provided below:

My concerns are with Turbines and
I feel that the ground is unsuitable
to build something that heavy. Living in the
area I know the land. Its good farmland
but a nightmare to build on, having done it. I
would suggest a lot of headaches could be
avoided if the turbines were moved to higher
ground. Building in a swamp is never good. Only Jesus
could make something stand on water. The ground here
is just not solid.

If you would like to be kept informed about the status of the Jericho Wind Energy Project, please provide your contact information below

Name: [Redacted]
Street Address: [Redacted]
City/Province: [Redacted]
Postal Code: [Redacted] Email: [Redacted]

To learn more about the Project, or to send your completed comment form to us, please contact:

Ross Groffman
Project Director
NextEra Energy Canada, ULC
390 Bay Street, Suite 1720
Toronto, Ontario M5H 2Y2

Toll Free: 1-877-257-7330
Email: Jericho.Wind@NextEraEnergy.com
Website: www.NextEraEnergyCanada.com

Jericho Wind Energy Centre



COMMENT FORM • February 6-8, 2013

Your comments will be considered. We are collecting this information to help us understand and address your concerns about the Project. Comments will become part of the public record with the exception of personal information.

1. Did the information at the meeting meet your expectations?

- Yes
- Somewhat
- No

Please explain: It's not a meeting
It's a done deal

2. If you asked questions during the meeting did you get a satisfactory response?

- Yes
- Didn't speak to anyone
- Somewhat
- No

Please explain: _____

3. After attending the meeting, how do you feel about the Project?

- Supportive
- Undecided
- Undecided and would like more information
- Non supportive

Please explain and let us know what other information you would like to receive: _____

This is an invasion
Lack of democratic process. Does not
improve our community.

4. What topics would you like to learn more about? (check all that apply)

- | | |
|--|---|
| <input type="checkbox"/> Aboriginal interests | <input type="checkbox"/> Community Partnerships |
| <input type="checkbox"/> Socio-economic | <input checked="" type="checkbox"/> Transmission |
| <input checked="" type="checkbox"/> Environment | <input type="checkbox"/> Project Details |
| <input checked="" type="checkbox"/> Human Health | <input checked="" type="checkbox"/> Other (Specify) _____ |

- These two bites do not work
- We don't want them
- Citizens were not involved in
- the process
- we are paying \$\$\$ for this

Jericho Wind Energy Centre



5. Please provide your comments or questions in the space provided below:

HV GE SCARY
GO SOMEWHERE
ELSE

If you would like to be kept informed about the status of the Jericho Wind Energy Project, please provide your contact

Name: [REDACTED]
Street Address: [REDACTED]
City/Province: [REDACTED]
Postal Code: [REDACTED] Email: [REDACTED]

To learn more about the Project, or to send your completed comment form to us, please contact:

Ross Groffman
Project Director
NextEra Energy Canada, ULC
390 Bay Street, Suite 1720
Toronto, Ontario M5H 2Y2

Toll Free: 1-877-257-7330
Email: Jericho.Wind@NextEraEnergy.com
Website: www.NextEraEnergyCanada.com

Your comments will be considered. We are collecting this information to help us understand and address your concerns about the Project. Comments will become part of the public record with the exception of personal information.

1. Did the information at the meeting meet your expectations?

- Yes
- Somewhat
- No

Please explain: representatives were not telling accurate information to

2. If you asked questions during the meeting did you get a satisfactory response?

- Yes
- Didn't speak to anyone
- Somewhat
- No

Please explain: every question was not answered with any accurate information

3. After attending the meeting, how do you feel about the Project?

- Supportive
- Undecided
- Undecided and would like more information
- Non supportive

Please explain and let us know what other information you would like to receive:
All representatives did not respond to any of my concerns

4. What topics would you like to learn more about? (check all that apply)

- | | |
|--|--|
| <input type="checkbox"/> Aboriginal interests | <input checked="" type="checkbox"/> Community Partnerships |
| <input checked="" type="checkbox"/> Socio-economic | <input checked="" type="checkbox"/> Transmission |
| <input checked="" type="checkbox"/> Environment | <input checked="" type="checkbox"/> Project Details |
| <input checked="" type="checkbox"/> Human Health | <input type="checkbox"/> Other (Specify) _____ |

Jericho Wind Energy Centre



5. Please provide your comments or questions in the space provided below:

I would like turbine #'s [redacted]
moved further ^{away} from my property
I would like the project delayed
~~cancel~~ until health concerns are
addressed

If you would like to be kept informed about the status of the Jericho Wind Energy Project, please provide your contact information below

Name: [redacted]
Street Address: [redacted]
City/Province: [redacted]
Postal Code: [redacted] Email: [redacted]

To learn more about the Project, or to send your completed comment form to us, please contact:

Ross Groffman
Project Director
NextEra Energy Canada, ULC
390 Bay Street, Suite 1720
Toronto, Ontario M5H 2Y2

Toll Free: 1-877-257-7330
Email: Jericho.Wind@NextEraEnergy.com
Website: www.NextEraEnergyCanada.com

Your comments will be considered. We are collecting this information to help us understand and address your concerns about the Project. Comments will become part of the public record with the exception of personal information.

1. Did the information at the meeting meet your expectations?

- Yes
- Somewhat
- No

Please explain: _____

2. If you asked questions during the meeting did you get a satisfactory response?

- Yes
- Didn't speak to anyone
- Somewhat
- No

Please explain: _____

3. After attending the meeting, how do you feel about the Project?

- Supportive
- Undecided
- Undecided and would like more information
- Non supportive

Please explain and let us know what other information you would like to receive: _____

4. What topics would you like to learn more about? (check all that apply)

- | | |
|---|---|
| <input type="checkbox"/> Aboriginal interests | <input type="checkbox"/> Community Partnerships |
| <input type="checkbox"/> Socio-economic | <input type="checkbox"/> Transmission |
| <input type="checkbox"/> Environment | <input type="checkbox"/> Project Details |
| <input type="checkbox"/> Human Health | <input type="checkbox"/> Other (Specify) _____ |

the FRAUD that involves
Nextera and the provincial
gov't.
I'm sure you know.

Jericho Wind Energy Centre



5. Please provide your comments or questions in the space provided below:

If you would like to be kept informed about the status of the Jericho Wind Energy Project, please provide your contact information below.

Name: _____
Street Address: _____
City/Province: _____
Postal Code: _____ Email: _____

To learn more about the Project, or to send your completed comment form to us, please contact:

Ross Groffman
Project Director
NextEra Energy Canada, ULC
390 Bay Street, Suite 1720
Toronto, Ontario M5H 2Y2

Toll Free: 1-877-257-7330
Email: Jericho.Wind@NextEraEnergy.com
Website: www.NextEraEnergyCanada.com

Your comments will be considered. We are collecting this information to help us understand and address your concerns about the Project. Comments will become part of the public record with the exception of personal information.

1. Did the information at the meeting meet your expectations?

- Yes
- Somewhat
- No

Please explain: _____

2. If you asked questions during the meeting did you get a satisfactory response?

- Yes
- Didn't speak to anyone
- Somewhat
- No

Please explain: _____

3. After attending the meeting, how do you feel about the Project?

- Supportive
- Undecided
- Undecided and would like more information
- Non supportive

Please explain and let us know what other information you would like to receive: _____

4. What topics would you like to learn more about? (check all that apply)

- | | |
|---|---|
| <input type="checkbox"/> Aboriginal interests | <input type="checkbox"/> Community Partnerships |
| <input type="checkbox"/> Socio-economic | <input type="checkbox"/> Transmission |
| <input type="checkbox"/> Environment | <input type="checkbox"/> Project Details |
| <input type="checkbox"/> Human Health | <input type="checkbox"/> Other (Specify) _____ |

Civil disobedience

Your comments will be considered. We are collecting this information to help us understand and address your concerns about the Project. Comments will become part of the public record with the exception of personal information

1. Did the information at the meeting meet your expectations?

- Yes
- Somewhat
- No

Please explain: you sucked at it and kept repeating what you said

2. If you asked questions during the meeting did you get a satisfactory response?

- Yes
- Didn't speak to anyone
- Somewhat
- No

Please explain: I talked about child hood cancer and did he care? NO!

3. After attending the meeting, how do you feel about the Project?

- Supportive
- Undecided
- Undecided and would like more information
- Non supportive

Please explain and let us know what other information you would like to receive: The secrets you are keeping from us in the locker in the bank vault

4. What topics would you like to learn more about? (check all that apply)

- | | |
|--|---|
| <input type="checkbox"/> Aboriginal interests | <input type="checkbox"/> Community Partnerships |
| <input type="checkbox"/> Socio-economic | <input type="checkbox"/> Transmission |
| <input type="checkbox"/> Environment | <input type="checkbox"/> Project Details |
| <input checked="" type="checkbox"/> Human Health | <input type="checkbox"/> Other (Specify) <u>why children don't matter</u> |

5. Please provide your comments or questions in the space provided below:

If you would like to be kept informed about the status of the Jericho Wind Energy Project, please provide your contact information below

Name: _____

Street Address: _____

City/Province: _____

Postal Code: _____ **Email:** _____

To learn more about the Project, or to send your completed comment form to us, please contact:

Ross Groffman
Project Director
NextEra Energy Canada, ULC
390 Bay Street, Suite 1720
Toronto, Ontario M5H 2Y2

Toll Free: 1-877-257-7330
Email: Jericho.Wind@NextEraEnergy.com
Website: www.NextEraEnergyCanada.com

Jericho Wind Energy Centre



COMMENT FORM • February 6-8, 2013

Your comments will be considered. We are collecting this information to help us understand and address your concerns about the Project. Comments will become part of the public record with the exception of personal information.

1. Did the information at the meeting meet your expectations?

- Yes
- Somewhat
- No

Please explain: _____

2. If you asked questions during the meeting did you get a satisfactory response?

- Yes
- Didn't speak to anyone
- Somewhat
- No

Please explain: _____

3. After attending the meeting, how do you feel about the Project?

- Supportive
- Undecided
- Undecided and would like more information
- Non supportive

Please explain and let us know what other information you would like to receive: _____

4. What topics would you like to learn more about? (check all that apply)

- | | |
|---|---|
| <input type="checkbox"/> Aboriginal interests | <input type="checkbox"/> Community Partnerships |
| <input type="checkbox"/> Socio-economic | <input type="checkbox"/> Transmission |
| <input type="checkbox"/> Environment | <input checked="" type="checkbox"/> Project Details |
| <input type="checkbox"/> Human Health | <input type="checkbox"/> Other (Specify) _____ |

Jericho Wind Energy Centre



5. Please provide your comments or questions in the space provided below:

- SHOULD NOT PROCEED!
- HOMEOWNERS PROPERTY VALUES
- MICHANUS PROJECT AT LANDFILL
SHOULD PROCEED BEFORE THIS! DOES
- WHY ARE WE ASKING IT IF
THE AREA HAS NO CAPACITY!

If you would like to be kept informed about the status of the Jericho Wind Energy Project, please provide your contact information below

Name: _____
Street Address: _____
City/Province: _____
Postal Code: _____ Email: _____

To learn more about the Project, or to send your completed comment form to us, please contact:

Ross Groffman
Project Director
NextEra Energy Canada, ULC
390 Bay Street, Suite 1720
Toronto, Ontario M5H 2Y2

Toll Free: 1-877-257-7330
Email: Jericho.Wind@NextEraEnergy.com
Website: www.NextEraEnergyCanada.com

Jericho Wind Energy Centre



COMMENT FORM • February 6-8, 2013

Your comments will be considered. We are collecting this information to help us understand and address your concerns about the Project. Comments will become part of the public record with the exception of personal information.

1. Did the information at the meeting meet your expectations?

- Yes
- Somewhat
- No

Please explain: You kept repeating the same thing over and over. Never answered a question directly.

2. If you asked questions during the meeting did you get a satisfactory response?

- Yes
- Didn't speak to anyone
- Somewhat
- No

Please explain: Talked around the question

3. After attending the meeting, how do you feel about the Project?

- Supportive
- Undecided
- Undecided and would like more information
- Not supportive

Please explain and let us know what other information you would like to receive: We do not need 500-600 ft towers destroying our farmland, destroying the environment, we don't need the extra energy!!

4. What topics would you like to learn more about? (check all that apply)

- | | |
|---|--|
| <input type="checkbox"/> Aboriginal interests | <input type="checkbox"/> Community Partnerships |
| <input type="checkbox"/> Socio-economic | <input type="checkbox"/> Transmission |
| <input type="checkbox"/> Environment | <input type="checkbox"/> Project Details |
| <input type="checkbox"/> Human Health | <input type="checkbox"/> Other (Specify) <u>you going back</u> |

to Florida. None of you know about rural life. Its all about the money.

Jericho Wind Energy Centre



5. Please provide your comments or questions in the space provided below:

If you would like to be kept informed about the status of the Jericho Wind Energy Project, please provide your contact information below.

Name: _____

Street Address: _____

City/Province: _____

Postal Code: _____ **Email:** _____

To learn more about the Project, or to send your completed comment form to us, please contact:

Ross Groffman
Project Director
NextEra Energy Canada, ULC
390 Bay Street, Suite 1720
Toronto, Ontario M5H 2Y2

Toll Free: 1-877-257-7330
Email: Jericho.Wind@NextEraEnergy.com
Website: www.NextEraEnergyCanada.com

Your comments will be considered. We are collecting this information to help us understand and address your concerns about the Project. Comments will become part of the public record with the exception of personal information.

1. Did the information at the meeting meet your expectations?

- Yes
- Somewhat
- No

Please explain:

Never do!!!

2. If you asked questions during the meeting did you get a satisfactory response?

- Yes
- Didn't speak to anyone
- Somewhat
- No

Please explain:

totally difffent subject. I was talking about I they were talking about another!

3. After attending the meeting, how do you feel about the Project?

- Supportive
- Undecided
- Undecided and would like more information
- Non supportive

Please explain and let us know what other information you would like to receive:

why do you lie so much?

4. What topics would you like to learn more about? (check all that apply)

- Aboriginal interests
- Socio-economic
- Environment
- Human Health
- Community Partnerships
- Transmission
- Project Details
- Other (Specify)

how much you lie on average.



Jericho Wind Energy Centre



5. Please provide your comments or questions in the space provided below:

If you would like to be kept informed about the status of the Jericho Wind Energy Project, please provide your contact information below

Name: _____
Street Address: _____
City/Province: _____
Postal Code: _____ Email: _____

To learn more about the Project, or to send your completed comment form to us, please contact:

Ross Groffman
Project Director
NextEra Energy Canada, ULC
390 Bay Street, Suite 1720
Toronto, Ontario M5H 2Y2

Toll Free: 1-877-257-7330
Email: Jericho.Wind@NextEraEnergy.com
Website: www.NextEraEnergyCanada.com

Jericho Wind Energy Centre



COMMENT FORM • February 6-8, 2013

Your comments will be considered. We are collecting this information to help us understand and address your concerns about the Project. Comments will become part of the public record with the exception of personal information.

1. Did the information at the meeting meet your expectations?

- Yes
- Somewhat
- No

Please explain: It was what I expected since I've been to all the Jericho Project meetings so far.

2. If you asked questions during the meeting did you get a satisfactory response?

- Yes
- Didn't speak to anyone
- Somewhat
- No

Please explain: _____

3. After attending the meeting, how do you feel about the Project?

- Supportive
- Undecided
- Undecided and would like more information
- Non supportive

Please explain and let us know what other information you would like to receive: _____

4. What topics would you like to learn more about? (check all that apply)

- | | |
|---|---|
| <input type="checkbox"/> Aboriginal interests | <input type="checkbox"/> Community Partnerships |
| <input type="checkbox"/> Socio-economic | <input type="checkbox"/> Transmission |
| <input type="checkbox"/> Environment | <input type="checkbox"/> Project Details |
| <input type="checkbox"/> Human Health | <input type="checkbox"/> Other (Specify) |

All aspects concern me. I have asked to take some of your draft report publications and maps from the Thedford meeting and a representative from AECOM (Julie) will see that I get them.

Jericho Wind Energy Centre



5. Please provide your comments or questions in the space provided below:

I am concerned that the turbines are too close to me. I feel strongly that a 2 km setback (as required now) in several areas such as Australia) would be a more prudent way to go. With 2 km setbacks people might feel that their concerns are being addressed adequately.

I am also concerned that two turbines on either side of our properties are too close to our property lines. There seems to be ample room for the turbines to be relocated on the landowner's property so that they would not be so close to our property lines.

I am also concerned for the bald eagles on our property and on neighbouring properties where turbines are to go.

If you would like to be kept informed about the status of the Jericho Wind Energy Project, please provide your contact information below.

Name: I am being kept informed because I am
Street Address: within the Jericho Project area
City/Province:
Postal Code: Email:

To learn more about the Project, or to send your completed comment form to us, please contact:

Ross Groffman
Project Director
NextEra Energy Canada, ULC
390 Bay Street, Suite 1720
Toronto, Ontario M5H 2Y2

Toll Free: 1-877-257-7330
Email: Jericho.Wind@NextEraEnergy.com
Website: www.NextEraEnergyCanada.com

Jericho Wind Energy Centre



COMMENT FORM • February 6-8, 2013

Your comments will be considered. We are collecting this information to help us understand and address your concerns about the Project. Comments will become part of the public record with the exception of personal information

1. Did the information at the meeting meet your expectations?

- Yes
- Somewhat
- No

Please explain: Info shared was accurate & well presented. The highlighted concern system as well as the linked ones.

2. If you asked questions during the meeting did you get a satisfactory response?

- Yes
- Didn't speak to anyone
- Somewhat
- No

Please explain: Excellent input!

3. After attending the meeting, how do you feel about the Project?

- Supportive
- Undecided
- Undecided and would like more information
- Non supportive

Please explain and let us know what other information you would like to receive: Please keep the progress report coming

4. What topics would you like to learn more about? (check all that apply)

- | | |
|--|--|
| <input type="checkbox"/> Aboriginal interests | <input checked="" type="checkbox"/> Community Partnerships |
| <input checked="" type="checkbox"/> Socio-economic | <input checked="" type="checkbox"/> Transmission |
| <input type="checkbox"/> Environment | <input type="checkbox"/> Project Details |
| <input type="checkbox"/> Human Health | <input type="checkbox"/> Other (Specify) _____ |

Jericho Wind Energy Centre



5. Please provide your comments or questions in the space provided below:

*The noise is excessive & not proper to normal
level back in the province area.*

If you would like to be kept informed about the status of the Jericho Wind Energy Project, please provide your contact information below

Name: [Redacted]
Street Address: [Redacted]
City/Province: [Redacted]
Postal Code: [Redacted] Email: [Redacted]

To learn more about the Project, or to send your completed comment form to us, please contact:

Ross Groffman
Project Director
NextEra Energy Canada, ULC
390 Bay Street, Suite 1720
Toronto, Ontario M5H 2Y2

Toll Free: 1-877-257-7330
Email: Jericho.Wind@NextEraEnergy.com
Website: www.NextEraEnergyCanada.com