

Appendix B

Site Plan

Table 1. UTM Coordinates of Proposed Bluewater Wind Energy Centre Turbines

Turbine Number	Easting	Northing
1	445260	4816548
2	445320	4816183
3	445565	4813118
4	445568	4812063
5	445933	4810683
6	446088	4809847
7	446207	4820836
8	446521	4819890
9	446485	4819125
10	446595	4818636
11	446832	4817609
12	446877	4816800
13	447116	4816186
14	447232	4815368
15	447186	4814525
16	447590	4813794
17	447358	4812978
18	447341	4812484
19	448234	4820588
20	448434	4820321
21	449105	4819060
22	449166	4818561
23	449406	4817022
24	448974	4816250
25	449175	4814818
26	449284	4814234
27	449400	4813830
28	450031	4813877
29	450097	4813116
30	450058	4812694
31	450567	4810875
32	450732	4819033
33	451219	4819080
34	450937	4817380
35	451669	4815710
36	451756	4815381
37	453294	4815596
38	449306	4817953
39	449597	4815379
40	449532	4811269
41	450920	4816780

Note: All co-ordinates are provided in NAD 83 Zone 17.

Table 2. UTM Coordinates of Proposed Bluewater Wind Energy Centre Transformer Substation

	Easting	Northing
Transformer Substation	449471	4815930

Note: All co-ordinates are provided in NAD 83 Zone 17.

Table 3. UTM Coordinates of Receptors within Two Kilometres of Project Location

Receptor ID Number	Receptor Type	Easting	Northing
1	Non-participating	445421.91	4808223.93
2	Non-participating	447007.41	4808444.90
3	Non-participating	447325.48	4808496.53
4	Non-participating	445222.33	4808615.85
5	Non-participating	447240.08	4808839.33
6	Non-participating	447005.33	4808850.12
7	Vacant Lot Non-participating	447246.82	4808968.86
8	Non-participating	450246.48	4809056.11
9	Vacant Lot Non-participating	450321.98	4809067.03
10	Vacant Lot Non-participating	444993.26	4809159.57
11	Vacant Lot Non-participating	451358.45	4809217.57
12	Vacant Lot Non-participating	445934.49	4809259.91
13	Non-participating	450398.45	4809278.80
14	Non-participating	445070.60	4809290.97
15	Non-participating	449248.62	4809312.73
16	Non-participating	444966.71	4809318.58
17	Non-participating	450179.01	4809330.51
18	Non-participating	446894.99	4809336.78
19	Non-participating	446964.07	4809340.41
20	Vacant Lot Non-participating	444953.58	4809381.16
21	Non-participating	447212.52	4809388.89
22	Non-participating	447034.37	4809421.01
23	Vacant Lot Non-participating	449088.33	4809429.24
24	Vacant Lot Non-participating	445080.71	4809434.26
25	Vacant Lot Non-participating	449257.66	4809466.28
26	Non-participating	449049.67	4809544.86
27	Non-participating	450255.57	4809563.04
28	Vacant Lot Non-participating	445078.79	4809594.32
29	Non-participating	450268.34	4809635.87
30	Vacant Lot Non-participating	447312.14	4809682.57
31	Vacant Lot Non-participating	449236.49	4809683.24
32	Vacant Lot Non-participating	445056.44	4809700.90
33	Non-participating	446870.89	4809720.69
34	Vacant Lot Non-participating	446906.55	4809792.01
35	Non-participating	445032.39	4809792.29
36	Participating	449207.87	4809840.08
37	Participating	449163.02	4809875.18
38	Vacant Lot Non-participating	445001.80	4809909.93
39	Vacant Lot Non-participating	444860.97	4809973.17
40	Vacant Lot Non-participating	450025.02	4810024.23
41	Non-participating	448949.03	4810029.21
42	Non-participating	447140.16	4810031.43
43	Participating	446835.54	4810054.96
44	Non-participating	447100.10	4810072.13
45	Non-participating	450230.26	4810099.72
46	Non-participating	446770.67	4810107.11
47	Non-participating	444801.46	4810142.48
48	Vacant Lot Non-participating	444952.33	4810188.70
49	Vacant Lot Non-participating	448925.01	4810232.74
50	Vacant Lot Non-participating	450002.38	4810261.86
51	Vacant Lot Non-participating	447091.62	4810266.95
52	Vacant Lot Non-participating	449157.15	4810292.67
53	Vacant Lot Non-participating	447065.89	4810377.20
54	Non-participating	448886.23	4810399.78
55	Vacant Lot Non-participating	450183.11	4810412.14

Receptor ID Number	Receptor Type	Easting	Northing
56	Participating	450024.80	4810445.86
57	Non-participating	446725.78	4810463.38
58	Non-participating	446959.26	4810488.98
59	Vacant Lot Participating	450189.36	4810630.70
60	Non-participating	447061.45	4810636.15
61	Vacant Lot Non-participating	449076.29	4810696.96
62	Non-participating	448851.33	4810775.16
63	Vacant Lot Participating	449907.62	4810807.37
64	Vacant Lot Participating	450150.28	4810873.86
65	Vacant Lot Non-participating	448874.15	4810891.75
66	Non-participating	445273.55	4811025.65
67	Non-participating	443856.74	4811050.24
68	Non-participating	443863.52	4811057.02
69	Non-participating	443884.57	4811077.27
70	Participating	450125.46	4811083.27
71	Non-participating	443831.17	4811087.56
72	Non-participating	445269.52	4811108.30
73	Non-participating	445263.75	4811128.22
74	Non-participating	444207.26	4811147.19
75	Vacant Lot Non-participating	444695.61	4811183.64
76	Vacant Lot Non-participating	445132.68	4811215.18
77	Non-participating	444902.63	4811230.59
78	Vacant Lot Non-participating	445337.33	4811255.42
79	Non-participating	445923.45	4811283.35
80	Vacant Lot Non-participating	444679.07	4811296.09
81	Non-participating	444924.71	4811345.21
82	Vacant Lot Non-participating	445115.74	4811384.41
83	Participating	446512.91	4811421.42
84	Participating	447592.56	4811429.34
85	Non-participating	446597.30	4811448.92
86	Non-participating	446759.86	4811450.20
87	Vacant Lot Non-participating	446646.00	4811464.12
88	Vacant Lot Participating	445636.20	4811465.10
89	Non-participating	446771.12	4811465.12
90	Non-participating	446825.03	4811467.05
91	Vacant Lot Non-participating	445823.50	4811473.70
92	Participating	447075.23	4811477.01
93	Non-participating	446621.24	4811481.92
94	Non-participating	446802.91	4811488.08
95	Non-participating	446681.07	4811490.62
96	Non-participating	446702.33	4811491.55
97	Non-participating	446742.29	4811495.72
98	Non-participating	446757.84	4811495.97
99	Non-participating	445503.37	4811497.37
100	Non-participating	446770.74	4811500.02
101	Vacant Lot Non-participating	446702.39	4811522.72
102	Non-participating	446761.21	4811538.85
103	Non-participating	446757.22	4811584.18
104	Vacant Lot Non-participating	446804.95	4811593.73
105	Non-participating	448079.42	4811594.69
106	Vacant Lot Participating	446881.83	4811599.38
107	Non-participating	448111.65	4811602.63
108	Non-participating	446750.33	4811613.19
109	Participating	446558.58	4811621.37
110	Non-participating	446754.32	4811637.85
111	Non-participating	448643.77	4811638.72
112	Non-participating	446821.40	4811641.47
113	Vacant Lot Non-participating	447415.05	4811678.26

Receptor ID Number	Receptor Type	Easting	Northing
114	Non-participating	446814.88	4811679.91
115	Non-participating	447794.19	4811705.69
116	Vacant Lot Non-participating	447811.98	4811715.02
117	Non-participating	448827.13	4811729.29
118	Non-participating	448653.98	4811731.95
119	Vacant Lot Participating	448936.63	4811737.07
120	Non-participating	447564.58	4811744.90
121	Non-participating	448804.93	4811756.81
122	Non-participating	447569.74	4811761.41
123	Vacant Lot Participating	449458.52	4811814.25
124	Vacant Lot Participating	449594.51	4811839.98
125	Vacant Lot Non-participating	449686.39	4811851.00
126	Non-participating	448031.78	4811860.69
127	Vacant Lot Non-participating	449807.68	4811873.06
128	Non-participating	450004.67	4811883.16
129	Vacant Lot Participating	450151.95	4811905.75
130	Vacant Lot Participating	448925.60	4811913.48
131	Non-participating	449372.87	4811920.01
132	Non-participating	448070.56	4811931.99
133	Vacant Lot Participating	450487.61	4811946.56
134	Vacant Lot Non-participating	450752.23	4811975.96
135	Vacant Lot Participating	449715.79	4811998.02
136	Vacant Lot Non-participating	451096.15	4812033.94
137	Participating	450060.00	4812047.22
138	Vacant Lot Participating	450432.48	4812111.95
139	Vacant Lot Non-participating	451722.51	4812122.98
140	Vacant Lot Participating	450645.65	4812152.38
141	Vacant Lot Non-participating	451616.64	4812152.71
142	Vacant Lot Non-participating	450932.32	4812174.43
143	Vacant Lot Participating	450792.66	4812185.46
144	Vacant Lot Non-participating	451611.28	4812235.58
145	Participating	448726.23	4812252.41
146	Vacant Lot Non-participating	451693.11	4812273.67
147	Vacant Lot Non-participating	451814.40	4812284.69
148	Vacant Lot Non-participating	446584.43	4812354.52
149	Non-participating	448854.25	4812387.20
150	Non-participating	446416.39	4812420.85
151	Non-participating	448800.68	4812430.62
152	Participating	446702.89	4812580.02
153	Vacant Lot Non-participating	446544.00	4812593.42
154	Vacant Lot Participating	448620.55	4812674.27
155	Non-participating	448503.59	4812739.12
156	Vacant Lot Non-participating	446544.00	4812755.13
157	Vacant Lot Non-participating	450855.14	4812791.88
158	Non-participating	446366.86	4812792.19
159	Vacant Lot Participating	446753.49	4812799.23
160	Non-participating	448793.32	4812839.43
161	Non-participating	446700.05	4812924.96
162	Vacant Lot Participating	450700.78	4812935.22
163	Non-participating	446335.41	4812981.39
164	Non-participating	448728.71	4813022.00
165	Non-participating	448726.13	4813150.65
166	Participating	448512.31	4813158.62
167	Vacant Lot Non-participating	450811.04	4813188.82
168	Vacant Lot Participating	446492.54	4813192.49
169	Vacant Lot Participating	450671.37	4813225.57
170	Non-participating	446611.27	4813233.21
171	Non-participating	446403.92	4813280.72

Receptor ID Number	Receptor Type	Easting	Northing
172	Participating	449736.94	4813366.73
173	Participating	446319.18	4813380.86
174	Vacant Lot Non-participating	445055.50	4813405.66
175	Vacant Lot Participating	446654.26	4813471.82
176	Participating	448677.55	4813543.23
177	Vacant Lot Non-participating	450748.56	4813593.10
178	Non-participating	448476.65	4813613.28
179	Non-participating	452536.36	4813655.34
180	Non-participating	446291.75	4813694.41
181	Non-participating	452790.27	4813722.96
182	Non-participating	446742.98	4813747.62
183	Participating	448600.00	4813787.36
184	Vacant Lot Non-participating	453829.30	4813822.81
185	Vacant Lot Participating	448484.56	4813898.15
186	Vacant Lot Participating	450505.99	4813975.33
187	Non-participating	446293.63	4813985.96
188	Non-participating	446306.61	4813994.91
189	Vacant Lot Participating	450726.50	4814004.74
190	Vacant Lot Non-participating	452555.33	4814017.28
191	Vacant Lot Participating	448616.87	4814019.44
192	Non-participating	452711.51	4814027.13
193	Vacant Lot Non-participating	453797.55	4814039.77
194	Participating	446483.74	4814051.97
195	Vacant Lot Non-participating	451204.29	4814063.54
196	Non-participating	448465.18	4814069.72
197	Vacant Lot Non-participating	451450.54	4814089.27
198	Vacant Lot Participating	450502.31	4814181.15
199	Vacant Lot Non-participating	450697.10	4814217.90
200	Non-participating	446089.90	4814258.35
201	Vacant Lot Non-participating	451513.02	4814298.76
202	Non-participating	446361.14	4814325.03
203	Non-participating	446149.25	4814339.32
204	Non-participating	448441.58	4814359.27
205	Non-participating	448438.06	4814388.08
206	Vacant Lot Participating	450476.58	4814390.64
207	Non-participating	454275.89	4814460.11
208	Participating	446423.33	4814463.00
209	Non-participating	448430.41	4814470.98
210	Participating	448617.97	4814472.16
211	Vacant Lot Non-participating	452733.22	4814475.18
212	Vacant Lot Non-participating	454384.92	4814484.27
213	Participating	448649.72	4814485.68
214	Participating	446441.77	4814491.53
215	Non-participating	452362.42	4814564.54
216	Non-participating	446321.23	4814570.33
217	Non-participating	452471.28	4814579.99
218	Non-participating	446227.04	4814592.22
219	Non-participating	446211.25	4814599.35
220	Non-participating	452719.90	4814614.26
221	Non-participating	450315.88	4814708.29
222	Vacant Lot Non-participating	454508.40	4814754.50
223	Vacant Lot Participating	448572.54	4814768.47
224	Vacant Lot Non-participating	452546.06	4814790.48
225	Non-participating	454317.27	4814800.98
226	Vacant Lot Participating	450406.75	4814813.31
227	Vacant Lot Non-participating	450634.62	4814816.98
228	Vacant Lot Participating	446455.79	4814868.44
229	Vacant Lot Non-participating	452461.25	4814883.14

Receptor ID Number	Receptor Type	Easting	Northing
230	Non-participating	448274.33	4814914.74
231	Non-participating	450437.80	4814927.79
232	Non-participating	448464.22	4814973.25
233	Non-participating	452629.57	4814974.37
234	Vacant Lot Non-participating	450572.14	4814978.69
235	Non-participating	452658.29	4814985.71
236	Non-participating	452658.98	4814988.14
237	Non-participating	446230.18	4814991.77
238	Non-participating	452651.87	4815005.36
239	Non-participating	450274.59	4815091.01
240	Vacant Lot Non-participating	443732.39	4815140.41
241	Non-participating	452467.56	4815222.37
242	Participating	448221.31	4815247.18
243	Participating	448385.35	4815321.95
244	Participating	446312.24	4815333.18
245	Vacant Lot Non-participating	454475.32	4815342.55
246	Vacant Lot Non-participating	450336.92	4815349.90
247	Participating	452359.35	4815372.80
248	Non-participating	443586.38	4815417.82
249	Vacant Lot Non-participating	445777.29	4815423.38
250	Participating	452658.81	4815428.42
251	Non-participating	444866.30	4815486.71
252	Non-participating	443602.55	4815518.51
253	Vacant Lot Non-participating	443761.79	4815518.97
254	Vacant Lot Participating	448411.06	4815555.72
255	Non-participating	448114.57	4815594.78
256	Participating	450325.79	4815609.63
257	Non-participating	445338.81	4815611.48
258	Vacant Lot Participating	450553.76	4815629.22
259	Non-participating	448403.41	4815707.88
260	Vacant Lot Participating	448168.49	4815717.43
261	Vacant Lot Non-participating	443772.81	4815735.81
262	Participating	452202.86	4815739.45
263	Vacant Lot Non-participating	454405.49	4815761.54
264	Non-participating	452511.90	4815782.45
265	Vacant Lot Participating	450284.38	4815804.05
266	Vacant Lot Participating	446793.92	4815809.31
267	Non-participating	446143.43	4815818.22
268	Non-participating	448311.98	4815825.38
269	Non-participating	443804.05	4815875.85
270	Vacant Lot Participating	446376.10	4815893.86
271	Vacant Lot Participating	448363.28	4815930.60
272	Non-participating	443651.35	4815941.47
273	Vacant Lot Non-participating	454372.41	4815960.00
274	Non-participating	448295.60	4815995.83
275	Non-participating	450554.56	4816001.94
276	Vacant Lot Participating	450241.36	4816011.46
277	Participating	448153.23	4816021.98
278	Non-participating	448302.85	4816064.18
279	Vacant Lot Non-participating	445986.08	4816082.58
280	Non-participating	450563.38	4816091.58
281	Non-participating	454392.65	4816105.04
282	Non-participating	450560.59	4816114.33
283	Non-participating	446062.18	4816126.30
284	Non-participating	452172.97	4816185.97
285	Non-participating	446341.09	4816200.22
286	Non-participating	452596.41	4816249.07
287	Vacant Lot Participating	446058.86	4816257.70

Receptor ID Number	Receptor Type	Easting	Northing
288	Non-participating	448177.79	4816266.93
289	Non-participating	443795.32	4816282.29
290	Vacant Lot Participating	446249.97	4816327.53
291	Non-participating	454202.07	4816341.78
292	Participating	450200.15	4816364.32
293	Non-participating	454391.04	4816368.63
294	Vacant Lot Non-participating	443857.35	4816382.66
295	Participating	450433.77	4816422.13
296	Vacant Lot Participating	446216.90	4816459.84
297	Vacant Lot Non-participating	452245.13	4816476.31
298	Participating	448305.64	4816488.82
299	Vacant Lot Non-participating	448094.98	4816544.38
300	Vacant Lot Non-participating	454002.76	4816561.86
301	Non-participating	452231.17	4816587.45
302	Non-participating	452455.55	4816598.25
303	Non-participating	446220.26	4816598.94
304	Participating	445796.61	4816599.21
305	Non-participating	446215.36	4816643.53
306	Non-participating	443701.55	4816651.21
307	Non-participating	443895.67	4816682.88
308	Non-participating	443700.38	4816689.92
309	Participating	447865.40	4816713.82
310	Vacant Lot Participating	450358.38	4816752.00
311	Participating	447934.53	4816764.74
312	Vacant Lot Non-participating	454284.21	4816764.90
313	Participating	447885.27	4816775.51
314	Non-participating	452350.56	4816784.84
315	Vacant Lot Non-participating	443886.75	4816786.95
316	Non-participating	446012.71	4816820.20
317	Non-participating	443838.25	4816870.24
318	Participating	450165.98	4816899.36
319	Vacant Lot Non-participating	443721.41	4816952.89
320	Non-participating	451530.21	4816962.63
321	Participating	450161.76	4816963.33
322	Vacant Lot Participating	448260.37	4816967.04
323	Non-participating	451510.60	4816988.22
324	Participating	450104.82	4816996.38
325	Vacant Lot Non-participating	452193.68	4817006.57
326	Non-participating	452480.70	4817018.45
327	Non-participating	443866.47	4817020.17
328	Participating	450145.59	4817040.66
329	Participating	446089.09	4817042.28
330	Non-participating	445998.56	4817050.06
331	Participating	450220.12	4817114.16
332	Vacant Lot Non-participating	443930.85	4817158.15
333	Participating	448166.95	4817273.83
334	Participating	448015.46	4817322.15
335	Non-participating	452188.89	4817337.84
336	Non-participating	452409.88	4817373.68
337	Non-participating	450192.05	4817377.12
338	Vacant Lot Non-participating	454155.57	4817400.72
339	Non-participating	445925.73	4817414.70
340	Vacant Lot Non-participating	443784.25	4817442.37
341	Participating	446046.27	4817447.52
342	Non-participating	445924.26	4817452.42
343	Non-participating	450086.09	4817494.74
344	Non-participating	443783.34	4817526.29
345	Vacant Lot Non-participating	450227.21	4817528.88

Receptor ID Number	Receptor Type	Easting	Northing
346	Vacant Lot Non-participating	452109.00	4817528.92
347	Vacant Lot Non-participating	452288.51	4817533.04
348	Vacant Lot Non-participating	444496.85	4817555.09
349	Vacant Lot Non-participating	444802.90	4817561.43
350	Non-participating	444861.99	4817566.65
351	Vacant Lot Participating	447977.37	4817569.79
352	Vacant Lot Participating	450200.93	4817643.30
353	Non-participating	448161.99	4817660.35
354	Vacant Lot Non-participating	452083.71	4817717.09
355	Participating	446065.51	4817753.46
356	Non-participating	445815.60	4817764.90
357	Non-participating	447892.10	4817780.21
358	Non-participating	448050.21	4817857.92
359	Participating	451822.65	4817878.27
360	Non-participating	448051.27	4817945.57
361	Non-participating	452178.44	4817945.66
362	Non-participating	452194.12	4817966.86
363	Vacant Lot Non-participating	448102.33	4818051.25
364	Non-participating	445790.95	4818059.25
365	Non-participating	452169.51	4818064.89
366	Participating	450134.86	4818082.22
367	Participating	450004.12	4818106.41
368	Vacant Lot Participating	445985.35	4818110.06
369	Participating	447478.20	4818153.58
370	Participating	447549.69	4818201.24
371	Non-participating	450997.68	4818207.53
372	Vacant Lot Non-participating	448079.96	4818219.75
373	Participating	445924.21	4818221.06
374	Vacant Lot Participating	449932.64	4818242.37
375	Vacant Lot Non-participating	450105.38	4818279.12
376	Participating	452003.11	4818343.92
377	Non-participating	452128.20	4818421.22
378	Vacant Lot Participating	449906.91	4818470.24
379	Non-participating	448001.65	4818473.43
380	Vacant Lot Non-participating	452946.39	4818477.59
381	Participating	447692.93	4818501.16
382	Non-participating	451879.64	4818507.65
383	Non-participating	452223.37	4818521.12
384	Vacant Lot Participating	445933.90	4818536.40
385	Vacant Lot Participating	447982.78	4818615.08
386	Participating	445940.46	4818630.68
387	Vacant Lot Non-participating	445720.73	4818650.33
388	Vacant Lot Non-participating	452751.60	4818661.36
389	Vacant Lot Participating	449866.48	4818705.46
390	Vacant Lot Participating	447786.25	4818782.64
391	Vacant Lot Participating	452126.80	4818804.69
392	Participating	447910.92	4818873.09
393	Vacant Lot Participating	449843.69	4818926.59
394	Vacant Lot Participating	451917.30	4818955.38
395	Vacant Lot Participating	449985.46	4818957.88
396	Non-participating	445692.22	4819027.96
397	Participating	445851.14	4819063.44
398	Vacant Lot Non-participating	449973.06	4819120.77
399	Non-participating	451897.11	4819221.37
400	Non-participating	449918.11	4819237.02
401	Participating	452027.74	4819238.07
402	Vacant Lot Participating	445647.22	4819245.73
403	Vacant Lot Non-participating	448003.10	4819311.89

Receptor ID Number	Receptor Type	Easting	Northing
404	Non-participating	447726.08	4819317.66
405	Participating	449834.52	4819401.60
406	Vacant Lot Non-participating	451847.47	4819418.47
407	Vacant Lot Non-participating	447687.02	4819433.17
408	Participating	445755.44	4819507.54
409	Participating	447691.81	4819576.50
410	Non-participating	449924.65	4819579.12
411	Non-participating	445288.67	4819594.61
412	Participating	449771.31	4819651.12
413	Vacant Lot Non-participating	447874.46	4819668.39
414	Non-participating	447701.21	4819705.52
415	Non-participating	452861.17	4819809.77
416	Non-participating	447751.31	4819841.43
417	Non-participating	445714.10	4819842.18
418	Non-participating	452649.25	4819855.69
419	Vacant Lot Participating	449715.95	4819882.85
420	Non-participating	445799.33	4819886.08
421	Non-participating	452974.75	4819923.34
422	Vacant Lot Participating	445544.31	4819933.01
423	Non-participating	451831.71	4819967.11
424	Non-participating	452715.57	4819982.42
425	Vacant Lot Participating	447778.57	4820012.44
426	Vacant Lot Participating	446017.21	4820043.33
427	Vacant Lot Non-participating	452203.61	4820047.92
428	Vacant Lot Non-participating	451827.40	4820049.30
429	Non-participating	452416.77	4820056.01
430	Non-participating	452117.91	4820056.41
431	Non-participating	451889.27	4820088.15
432	Non-participating	452134.14	4820090.53
433	Participating	449705.34	4820096.94
434	Non-participating	451822.20	4820097.28
435	Non-participating	452087.31	4820098.87
436	Non-participating	452044.05	4820112.36
437	Vacant Lot Non-participating	451815.08	4820121.14
438	Non-participating	451816.64	4820125.06
439	Non-participating	451583.98	4820134.08
440	Non-participating	451997.62	4820142.13
441	Non-participating	447721.66	4820142.56
442	Non-participating	452154.38	4820145.70
443	Non-participating	451636.16	4820151.07
444	Non-participating	451814.11	4820151.59
445	Vacant Lot Non-participating	452238.54	4820155.87
446	Non-participating	451964.28	4820158.79
447	Non-participating	452076.05	4820169.27
448	Non-participating	451922.21	4820169.91
449	Non-participating	452051.17	4820174.12
450	Non-participating	451812.28	4820175.07
451	Non-participating	451894.43	4820179.04
452	Non-participating	452114.27	4820183.83
453	Non-participating	451870.62	4820189.35
454	Non-participating	451851.57	4820192.93
455	Non-participating	451996.82	4820199.67
456	Non-participating	451948.80	4820208.40
457	Non-participating	451607.64	4820208.71
458	Non-participating	452158.35	4820211.58
459	Non-participating	452093.66	4820217.53
460	Non-participating	451785.68	4820221.90
461	Non-participating	452061.91	4820229.04

Receptor ID Number	Receptor Type	Easting	Northing
462	Non-participating	451765.44	4820231.03
463	Non-participating	451735.28	4820234.20
464	Non-participating	451870.62	4820238.17
465	Non-participating	452035.72	4820238.17
466	Non-participating	451703.53	4820251.66
467	Non-participating	451797.59	4820257.22
468	Vacant Lot Participating	447548.86	4820269.35
469	Non-participating	451765.05	4820270.32
470	Participating	445746.02	4820274.25
471	Non-participating	445537.94	4820277.08
472	Non-participating	451939.28	4820277.86
473	Non-participating	451739.25	4820280.64
474	Non-participating	451827.75	4820287.38
475	Non-participating	451693.61	4820295.72
476	Non-participating	451876.97	4820298.49
477	Non-participating	451833.71	4820303.65
478	Vacant Lot Non-participating	451321.39	4820311.76
479	Non-participating	451961.50	4820313.97
480	Non-participating	451838.47	4820319.13
481	Non-participating	451641.62	4820329.45
482	Non-participating	451886.09	4820340.17
483	Non-participating	451847.60	4820340.96
484	Non-participating	451223.79	4820356.34
485	Non-participating	451844.82	4820375.89
486	Vacant Lot Non-participating	452007.54	4820376.81
487	Non-participating	451907.92	4820381.04
488	Non-participating	451227.06	4820384.48
489	Non-participating	450914.42	4820395.79
490	Non-participating	451409.10	4820396.53
491	Vacant Lot Non-participating	451515.52	4820396.75
492	Non-participating	451468.23	4820403.28
493	Non-participating	451436.48	4820439.40
494	Vacant Lot Participating	447752.36	4820456.85
495	Vacant Lot Non-participating	447511.92	4820457.56
496	Vacant Lot Non-participating	452028.71	4820464.13
497	Non-participating	450883.18	4820494.46
498	Vacant Lot Non-participating	451856.73	4820495.88
499	Non-participating	451240.52	4820512.54
500	Vacant Lot Non-participating	451190.08	4820536.45
501	Vacant Lot Non-participating	452065.75	4820559.38
502	Non-participating	450434.80	4820568.02
503	Non-participating	445406.15	4820630.97
504	Non-participating	445331.83	4820631.46
505	Non-participating	450952.59	4820637.38
506	Vacant Lot Non-participating	452089.56	4820641.40
507	Participating	445586.09	4820649.55
508	Non-participating	450985.38	4820678.37
509	Non-participating	450780.51	4820696.39
510	Non-participating	450760.90	4820723.03
511	Non-participating	450672.92	4820727.56
512	Vacant Lot Non-participating	452121.31	4820741.94
513	Vacant Lot Non-participating	452150.41	4820826.61
514	Non-participating	449927.00	4820832.00
515	Non-participating	450194.67	4820836.29
516	Vacant Lot Non-participating	444265.31	4820892.27
517	Vacant Lot Participating	449546.73	4820903.30
518	Non-participating	449991.19	4820924.65
519	Vacant Lot Non-participating	449315.18	4820995.18

Receptor ID Number	Receptor Type	Easting	Northing
520	Vacant Lot Non-participating	449701.00	4821015.88
521	Non-participating	447505.73	4821041.19
522	Non-participating	449575.81	4821054.01
523	Non-participating	445564.71	4821060.55
524	Non-participating	447504.01	4821062.27
525	Participating	448480.01	4821106.36
526	Non-participating	449056.40	4821110.93
527	Participating	446828.17	4821121.64
528	Non-participating	449391.52	4821175.68
529	Vacant Lot Non-participating	447439.03	4821202.74
530	Non-participating	449141.07	4821226.91
531	Vacant Lot Participating	445562.69	4821259.80
532	Non-participating	446778.79	4821262.50
533	Vacant Lot Non-participating	445367.90	4821289.20
534	Non-participating	444265.64	4821294.60
535	Non-participating	446779.83	4821304.08
536	Non-participating	444798.43	4821334.27
537	Non-participating	449147.47	4821371.35
538	Vacant Lot Non-participating	447437.10	4821395.79
539	Vacant Lot Participating	446319.81	4821414.16
540	Non-participating	448161.48	4821424.78
541	Vacant Lot Non-participating	445114.30	4821439.89
542	Non-participating	448503.91	4821444.97
543	Vacant Lot Non-participating	444996.69	4821450.92
544	Non-participating	448135.94	4821460.93
545	Vacant Lot Non-participating	448410.36	4821468.32
546	Non-participating	448254.22	4821506.52
547	Vacant Lot Non-participating	448175.41	4821549.28
548	Vacant Lot Participating	447624.54	4821568.53
549	Vacant Lot Non-participating	445117.98	4821642.03
550	Non-participating	445765.53	4821654.72
551	Vacant Lot Non-participating	445004.04	4821715.54
552	Participating	446655.37	4821760.59
553	Non-participating	445093.67	4821775.45
554	Non-participating	445105.03	4821802.89
555	Non-participating	447606.80	4821804.89
556	Non-participating	447388.38	4821836.79
557	Vacant Lot Non-participating	445632.52	4821917.68
558	Participating	446945.35	4821980.91
559	Vacant Lot Non-participating	444829.49	4822047.81
560	Vacant Lot Non-participating	444674.97	4822049.92
561	Vacant Lot Non-participating	445617.82	4822083.07
562	Non-participating	446340.48	4822173.36
563	Vacant Lot Non-participating	445819.96	4822185.98
564	Non-participating	446033.49	4822298.17
565	Participating	446366.24	4822311.76
566	Vacant Lot Non-participating	445352.04	4822543.05
567	Non-participating	445529.69	4822563.33
568	Non-participating	445243.01	4822570.08
569	Vacant Lot Non-participating	445808.45	4822725.62

Note: All co-ordinates are provided in NAD 83 Zone 17

Appendix

Parallel Boundary Settlement Reduction Analysis



NextEra Energy Canada, ULC

BLUEWATER WIND ENERGY CENTRE PARCEL BOUNDARY SETBACK REDUCTION ANALYSIS

JUSTIFICATION REPORT

JUNE 2012



TABLE OF CONTENTS

1.	INTRODUCTION	1
1.1	Purpose	1
1.2	Legislation	1
1.3	Project Description	2
2.	ANALYSIS	3
2.1	Turbine 3 – South Part Lot 5, Conc. 13 Stanley.....	3
2.2	Turbine 5 – South Part Lot 25, Conc. N BDY	4
2.3	Turbine 6 –Part Lot 27, Conc. 13 Bluewater.....	5
2.4	Turbine 13 – East Part Lots 11 & 12, Conc. 12 Bluewater.....	5
2.5	Turbine 14 –Part Lots 9 & 10, Conc. 12 Bluewater	6
2.6	Turbine 15 – Lot 8, Conc. 12 Bluewater.....	7
2.7	Turbine 16 –Part Lot 6, Conc. 12 Bluewater.....	7
2.8	Turbine 22 – South Part Lot 17, Conc. 9 Bluewater.....	8
2.9	Turbine 39 – N Pt Lot 9, S Pt Lot 10, Conc. 9 Bluewater	9
3.	CONCLUSION.....	9

1. INTRODUCTION

1.1 Purpose

The purpose of this report is to provide an assessment of proposed wind turbine locations within the Bluewater Wind Energy Centre that do not meet the required setback of “turbine height minus blades” from the base of the wind turbine to the boundary of parcels of land on which the turbine is located.

IBI Group was retained by NextEra Energy Canada, ULC to undertake an analysis of nine (9) turbines within the Bluewater Wind Energy Centre. The analysis will look at what impacts the reduced setback may have on nearby business, infrastructure, properties or land use activities, and will describe any required preventative measures to be used to address any adverse impacts.

From an agricultural planning perspective, it is generally considered advantageous to farmers to have turbines located as close as possible to lot lines (or fence lines located between fields), in order to cause the least amount of disruption to farming practices, in particular field crop planting and harvesting. This coincides with traditional locations for farm access roads along fence lines, which in turn are preferred locations for new or improved turbine access roads.

1.2 Legislation

Ontario Regulation 359/09, as amended, outlines the regulations for the development and approval of renewable energy projects within the Province of Ontario. Section 53 of the regulation outlines setback requirements for Class 3, 4, and 5 wind facilities, with the Bluewater Wind Energy Centre being a Class 4 wind facility. It states in subsection 53 (1) (b) that no person shall erect a Class 4 wind facility unless:

the distance between the base of the wind turbine and all boundaries of the parcel of land on which the wind turbine is constructed, installed or expanded is equivalent to, at a minimum, the height of the wind turbine, excluding the length of any blades.

Furthermore, subsection 53 (2) states the above described distance does not apply:

in respect of a boundary of the parcel of land on which the wind turbine is constructed, installed or expanded if the abutting parcel of land on that boundary is,

(a) owned by the person who proposes to engage in the renewable energy project in respect of the wind turbine; or

(b) owned by a person who has entered into an agreement with the person mentioned in clause (a) to permit the wind turbine to be located closer than the distance specified in clause (1) (b).

And furthermore under subsection 53 (3), states that clause 53 (1) (b) does not apply if the distance from the base of the turbine to the property boundary is at least blade length plus 10 metres and:

as part of an application for the issue of a renewable energy approval or a certificate of approval in respect of the construction, installation or expansion of the wind turbine, the person who is constructing, installing or expanding the wind turbine submits a written assessment,

(i) demonstrating that the proposed location of the wind turbine will not result in adverse impacts on nearby business, infrastructure, properties or land use activities, and

(ii) describing any preventative measures that are required to be implemented to address the possibility of any adverse impacts mentioned in subclause (i).

This report is intended to fulfill the above requirements of subsection 53 (2) and (3) of Ontario Regulation 359/09 as amended.

1.3 Project Description

The proposed Project is located in Huron County, within the Municipalities of Bluewater and Huron East. The Project Study Area consists of the areas being studied for the wind farm components (Wind Energy Centre Study Area), as well as for the interconnection route (i.e., the area being studied for transmission lines to connect the Project to the electrical grid) (Transmission Line Study Area). The Wind Energy Centre Study Area is generally bounded by Blackbush/Bronson Line to the west, Mill Road to the north, Concession 5 Road to the east, and Danceland Road/Staffa Road to the south, in the Municipality of Bluewater, while the Transmission Line Study Area is located to the east of the Wind Energy Centre Study Area, and is generally bounded by Concession 5 Road to the west, Mill Road to the north, Huron Road and Perth 183 Road to the east, and Staffa Road to the south, extending into the Municipality of Huron East.

The location of the Project Study Area was defined early in the planning process for the proposed wind energy facility, based on the availability of wind resources, approximate area required for the proposed project, and availability of existing infrastructure for connection to the electrical grid. The Project Study Area was used to facilitate information collection.

The Bluewater Wind Energy Centre is a 59.9 MW wind energy project proposing the use of thirty-seven GE xle 1.6 MW wind turbines. The proposed GE xle turbines have a hub height of 80 metres and a blade length of 50 metres. Given the hub height of the turbine, the minimum setback from a

property boundary is 80 metres. Based on this turbine model the absolute minimum setback from a property boundary would be 60 metres (blade length + 10 metres) if an assessment is undertaken which demonstrates that no adverse impacts will be caused to adjacent lands.

For this project there are nine (9) turbines which have lot line setbacks of less than 80 metres and therefore require an explanation and/or justification for the reduced property boundary setback.

TURBINE NO.	Host Land Parcel		Turbine Distance from Lot Line (metres)	Direction of Turbine from Neighbouring Land Parcel	Neighbouring Land Parcel		Notes
	Lot	Concession			Lot	Concession	
3	S Pt 5	13 Stanley	62.1	north	N Pt 5	13 Stanley	Assessment Conducted
5	Pt 25	N BNDY S	70.0	west	26	N BNDY	Assessment Conducted
6	Pt 27	13	62.1	south	26	13	Assessment Conducted
13	Pt 11 & 12	12 E	70.71	east	Pt Lot 12	11	Assessment Conducted
14	Pt 9 & 10	12	66.1	east	Pt 10	11	Assessment Conducted
15	8	12	65.8	south	8	12	Assessment Conducted
16	Pt 6	11	72.0	west	6	12	Assessment Conducted
22	Pt 17	9 S	63.9	south	Pt 16	9N	Assessment Conducted
39	Pt 10 & 9	9	75.2	south	Pt 8S & 9	9	Assessment Conducted

2. ANALYSIS

The methodology for this report was to identify turbines that were less than 80 metres from a lot line; undertake an analysis of the local surrounding land use characteristics; determine the potential impacts of the wind turbine on the surrounding land uses; and discuss what if any preventative measures should be employed to mitigate such impacts. Note that the attached map schedules include the distance used in this analysis as the central node of the proposed turbine base as per the regulation.

2.1 Turbine 3 – South Part Lot 5, Conc. 13 Stanley

2.1.1 DESCRIPTION

Turbine 3 is located 62.1 metres from the closest lot line (northerly side lot line) which is 17.9 metres less than required as the standard setback without undertaking any further analysis. The adjacent property to the north is owned by the same landowner. As a participating landowner, a reduced setback is permitted by regulation. These adjacent lands are used for field crop purposes. The closest buildings are approximately 600 metres east of the proposed turbine. Land use within

the vicinity of the proposed turbine would be restricted to seasonal farming activities (See Turbine 3 Map in Appendix 1). Despite having the same ownership, the lands to the north require assessment.

2.1.2 POTENTIAL IMPACTS

Adverse impacts to the neighbouring parcel from the reduced setback may include damage to crops as a result of turbine failure. However, this impact is already present at an 80 metre setback and is not enhanced significantly by requesting a reduction of 17.9 metres. There are no other adverse impacts to adjacent properties or land use activities.

2.1.3 PREVENTATIVE MEASURES

Preventative measures to address potential damage to neighbouring crops include certification of the wind turbine by professional engineers; ongoing regular maintenance and monitoring of the wind turbine by operations staff; and shutdown mechanisms and protocols in extreme weather instances to prevent damage to wind turbines. All of these measures are standard best practices and no additional preventative measures are required for the change in setback.

2.2 Turbine 5 – South Part Lot 25, Conc. N BDY

2.2.1 DESCRIPTION

This turbine is located 70 metres from the closest lot line (westerly side lot line) which is 10 metres less than required as the standard setback without undertaking any further analysis. The adjacent lands are cash crop agricultural fields, bisected by an overland drain approximately 150 metres southwest of the proposed turbine. The closest building is approximately 600 metres northwest of the turbine. Land use within the vicinity of the proposed turbine would be restricted to seasonal farming activities (See Turbine 5 Map in Appendix 1).

2.2.2 POTENTIAL IMPACTS

Adverse impacts to the neighbouring parcel to the west from the reduced setback may include damage to crops as a result of turbine failure. However, this impact is already present at an 80 metre setback and is not enhanced significantly by requesting a reduction of 10 metres. There are no other adverse impacts on nearby properties or land use activities as all lands are used for crop production.

2.2.3 PREVENTATIVE MEASURES

Preventative measures to address potential damage to neighbouring crops, and reduce risk to human safety include certification of the wind turbine by professional engineers; ongoing regular

maintenance and monitoring of the wind turbine by operations staff; and shutdown mechanisms and protocols in extreme weather instances to prevent damage to wind turbines. All of these measures are standard best practices and no additional preventative measures are required for the change in setback.

2.3 Turbine 6 –Part Lot 27, Conc. 13 Bluewater

2.3.1 DESCRIPTION

This turbine is located 62.1 metres from the closest lot line (southerly side lot line) which is 17.9 metres less than required as the standard setback without undertaking any further analysis. The adjacent lands are characterized as cropped agricultural fields in their entirety. There are no buildings, structures, or infrastructure located on the adjacent lands. The nearest building is approximately 700 metres distant to the east of the proposed turbine. Land use within the vicinity of the proposed turbine would be restricted to seasonal farming activities (See Turbine 6 Map in Appendix 1).

2.3.2 POTENTIAL IMPACTS

Adverse impacts to the neighbouring parcel from the reduced setback may include damage to crops as a result of turbine failure. However, this impact is already present at an 80 metre setback and is not enhanced significantly by requesting a reduction of 17.9 metres. There are no other adverse impacts on nearby properties or land use activities.

2.3.3 PREVENTATIVE MEASURES

Preventative measures to address potential damage to neighbouring crops include certification of the wind turbine by professional engineers; ongoing regular maintenance and monitoring of the wind turbine by operations staff; and shutdown mechanisms and protocols in extreme weather instances to prevent damage to wind turbines. All of these measures are standard best practices and no additional preventative measures are required for the change in setback.

2.4 Turbine 13 – East Part Lots 11 & 12, Conc. 12 Bluewater

2.4.1 DESCRIPTION

This turbine is located 70.7 metres from the closest lot line (easterly rear lot line), which is 9.3 metres less than required as the standard setback without undertaking any further analysis. The adjacent lands to the east are owned by a person(s) who has entered into an agreement to permit the reduced setback. All lands are used entirely for field crop purposes with buildings situated to the east on the abutting property at a distance of over 900 metres. Land use within the vicinity of

the proposed turbine would be restricted to seasonal farming activities (See Turbine 13 Map in Appendix 1). Despite the lands to east having an agreement in place, an assessment is required.

2.4.2 POTENTIAL IMPACTS

Adverse impacts to the neighbouring parcels from the reduced setback may include damage to crops as a result of turbine failure. However, this impact is already present at an 80 metre setback and is not enhanced significantly by requesting reductions of 9.3 metres. There are no other adverse impacts to adjacent properties or land use activities.

2.4.3 PREVENTATIVE MEASURES

Preventative measures to address potential damage to neighbouring crops include certification of the wind turbine by professional engineers; ongoing regular maintenance and monitoring of the wind turbine by operations staff; and shutdown mechanisms and protocols in extreme weather instances to prevent damage to wind turbines. All of these measures are standard best practices and no additional preventative measures are required for the change in setback.

2.5 Turbine 14 –Part Lots 9 & 10, Conc. 12 Bluewater

2.5.1 DESCRIPTION

This turbine is located 66.1 metres from the closest lot line (easterly rear lot line) which is 13.9 metres less than required as the standard setback without undertaking any further analysis. The land is used entirely for field crop purposes, and no buildings, structures, or infrastructure are located within 700 metres of the proposed turbine. Land use within the vicinity of the proposed turbine would be restricted to seasonal farming activities with otherwise minimal human activities (See Turbine 14 Map in Appendix 1).

2.5.2 POTENTIAL IMPACTS

Adverse impacts to the neighbouring parcels from the reduced setback may include damage to crops as a result of turbine failure. However, this impact is already present at an 80 metre setback and is not enhanced significantly by requesting a reduction of 13.9 metres. There are no other adverse impacts to adjacent properties or land use activities.

2.5.3 PREVENTATIVE MEASURES

Preventative measures to address potential damage to neighbouring crops include certification of the wind turbine by professional engineers; ongoing regular maintenance and monitoring of the wind turbine by operations staff; and shutdown mechanisms and protocols in extreme weather

instances to prevent damage to wind turbines. All of these measures are standard best practices and no additional preventative measures are required for the change in setback.

2.6 Turbine 15 – Lot 8, Conc. 12 Bluewater

2.6.1 DESCRIPTION

This turbine is located 65.8 metres from the closest lot line (southerly side lot line) which is 14.2 metres less than required as the standard setback without undertaking any further analysis. The adjacent lands are characterized as mostly cash crop fields, with a small woodlot approximately 150 metres east of the proposed turbine. The nearest farm buildings on the adjacent lands are located approximately 800 metres from the proposed turbine location. Land use within the vicinity of the proposed turbine would be restricted to seasonal farming activities (See Turbine 15 Map in Appendix 1).

2.6.2 POTENTIAL IMPACTS

Adverse impacts to the neighbouring parcel from the reduced setback may include damage to crops as a result of turbine failure. However, this impact is already present at an 80 metre setback and is not enhanced significantly by requesting a reduction of 14.2 metres. There are no other adverse impacts to adjacent properties or land use activities.

2.6.3 PREVENTATIVE MEASURES

Preventative measures to address potential damage to neighbouring crops include certification of the wind turbine by professional engineers; ongoing regular maintenance and monitoring of the wind turbine by operations staff; and shutdown mechanisms and protocols in extreme weather instances to prevent damage to wind turbines. All of these measures are standard best practices and no additional preventative measures are required for the change in setback.

2.7 Turbine 16 –Part Lot 6, Conc. 12 Bluewater

2.7.1 DESCRIPTION

This turbine is located 72 metres from the closest lot line (westerly rear lot line) which is only 8 metres less than required as the standard setback without undertaking any further analysis. The adjacent lands are mostly used for field crop purposes with the nearest building to the west being over 800 metres distant from the turbine. There is a portion of a woodlot on the subject property in the northwest corner that extends onto the adjacent parcel and is over 125 metres distant of the proposed turbine. Land use within the vicinity of the proposed turbine would be restricted to seasonal farming activities with otherwise minimal human activities (See Turbine 16 Map in Appendix 1).

2.7.2 POTENTIAL IMPACTS

Adverse impacts to the neighbouring parcel from the reduced setback may include damage to crops as a result of turbine failure. However, this impact is already present at an 80 metre setback and is not enhanced significantly by requesting a reduction of 8 metres. There are no other adverse impacts on nearby properties or land use activities.

2.7.3 PREVENTATIVE MEASURES

Preventative measures to address potential damage to neighbouring crops include certification of the wind turbine by professional engineers; ongoing regular maintenance and monitoring of the wind turbine by operations staff; and shutdown mechanisms and protocols in extreme weather instances to prevent damage to wind turbines. All of these measures are standard best practices and no additional preventative measures are required for the change in setback.

2.8 Turbine 22 – South Part Lot 17, Conc. 9 Bluewater

2.8.1 DESCRIPTION

This turbine is located 63.9 metres from the closest lot line (southerly side lot line) which is 16.1 metres less than required as the standard setback without undertaking any further analysis. The adjacent lands are used for field crop purposes with no buildings, structures, or infrastructure located on-site. Land use within the vicinity of the proposed turbine would be restricted to seasonal farming activities with otherwise minimal human activities (See Turbine 22 Map in Appendix 1).

2.8.2 POTENTIAL IMPACTS

Adverse impacts to the neighbouring parcel from the reduced setback may include damage to crops as a result of turbine failure. However, this impact is already present at an 80 metre setback and is not enhanced significantly by requesting a reduction of 16.1 metres. There are no other adverse impacts on nearby properties or land use activities.

2.8.3 PREVENTATIVE MEASURES

Preventative measures to address potential damage to neighbouring trees include certification of the wind turbine by professional engineers; ongoing regular maintenance and monitoring of the wind turbine by operations staff; and shutdown mechanisms and protocols in extreme weather instances to prevent damage to wind turbines. All of these measures are standard best practices and no additional preventative measures are required for the change in setback.

2.9 Turbine 39 – N Pt Lot 9, S Pt Lot 10, Conc. 9 Bluewater

2.9.1 DESCRIPTION

This turbine is located 75.2 metres from the closest lot line (southerly side lot line) which is only 4.8 metres less than required as the standard setback without undertaking any further analysis. The adjacent lands are used only for field crop purposes. Land use within the vicinity of the proposed turbine would be restricted to seasonal farming activities with otherwise minimal human activities (See Turbine 39 Map in Appendix 1).

2.9.2 POTENTIAL IMPACTS

Adverse impacts to the neighbouring parcel from the reduced setback may include damage to crops as a result of turbine failure. However, this impact is already present at an 80 metre setback and is not enhanced significantly by requesting a reduction of only 4.8 metres. There are no other adverse impacts on nearby properties or land use activities.

2.9.3 PREVENTATIVE MEASURES

Preventative measures to address potential damage to neighbouring crops include certification of the wind turbine by professional engineers; ongoing regular maintenance and monitoring of the wind turbine by operations staff; and shutdown mechanisms and protocols in extreme weather instances to prevent damage to wind turbines. All of these measures are standard best practices and no additional preventative measures are required for the change in setback.

3. CONCLUSION

An assessment of potential effects and mitigation measures was undertaken for nine (9) turbines as per Section 53(3) of Ontario Regulation 359/09 as amended. It is our opinion that these turbines would create no adverse impacts as a result of the setback reductions, and that standard preventative measures implemented through best practices address any change in impacts that may be encountered.

Appendix 1 – Individual Map Schedules



Bluewater Wind Energy Centre

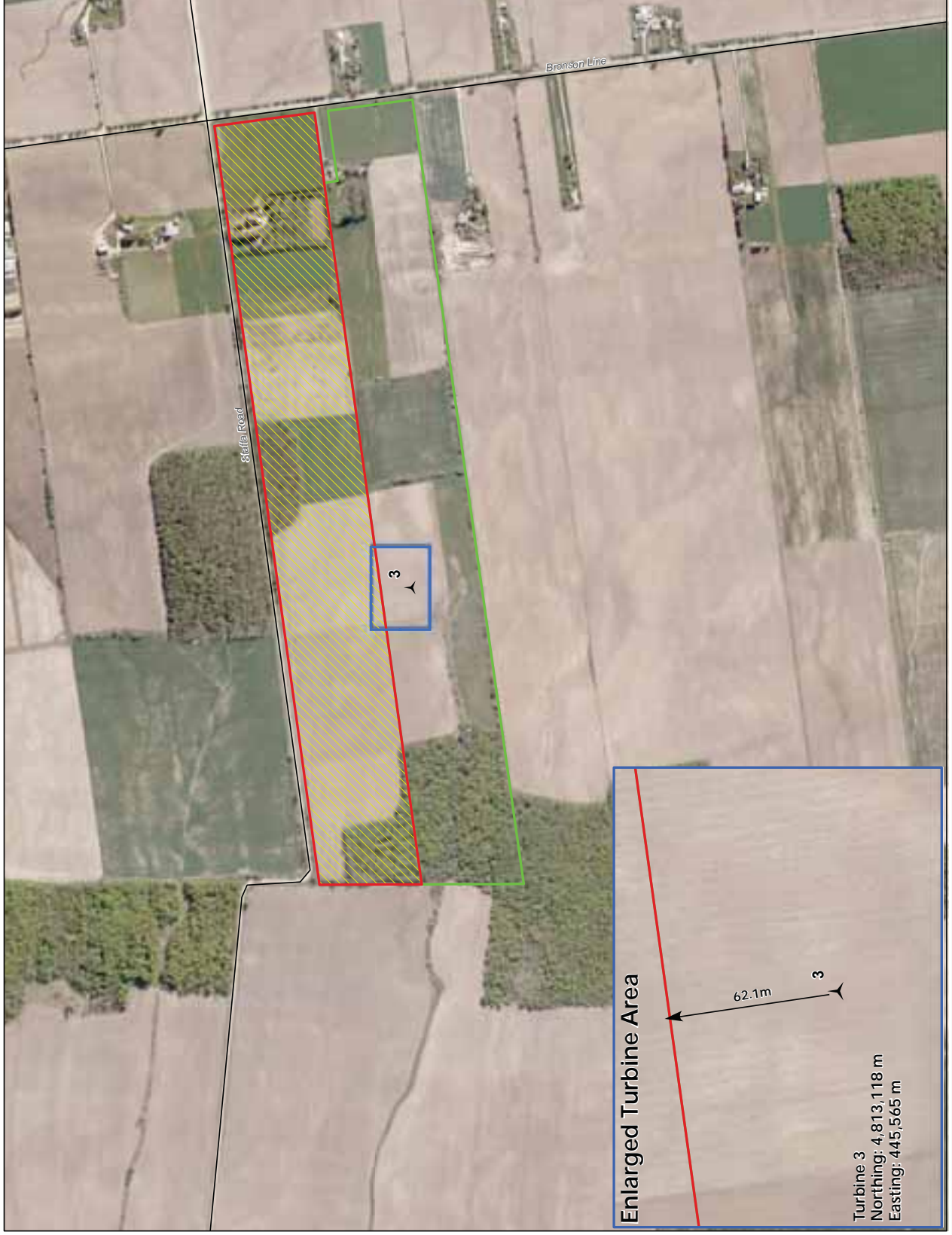
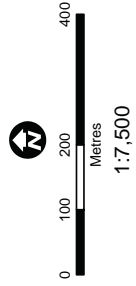
Huron County, Ontario

Parcel Boundary Setback Reduction Analysis

Legend

- Turbine Location
- Host Land Parcel
S Pt Lot 5 Con 13 Stanley
- Neighbouring Land Parcel
N Pt Lot 5 Con 13 Stanley
- Required Lotline Setback**
 - Agreement - Pending - No Setback Required
 - No Agreement - 60m Setback With Assessment

Turbine 3





Bluewater Wind Energy Centre

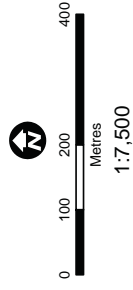
Huron County, Ontario

Parcel Boundary Setback Reduction Analysis

Legend

- Turbine Location
- Host Land Parcel
CON N BDY S PT LOT 25
- Neighbouring Land Parcel
CON N BDY LOT 26
- Required Lotline Setback**
 - Existing Agreement - No Setback Required
 - No Agreement - 60m Setback With Assessment

Turbine 5





Bluewater Wind Energy Centre

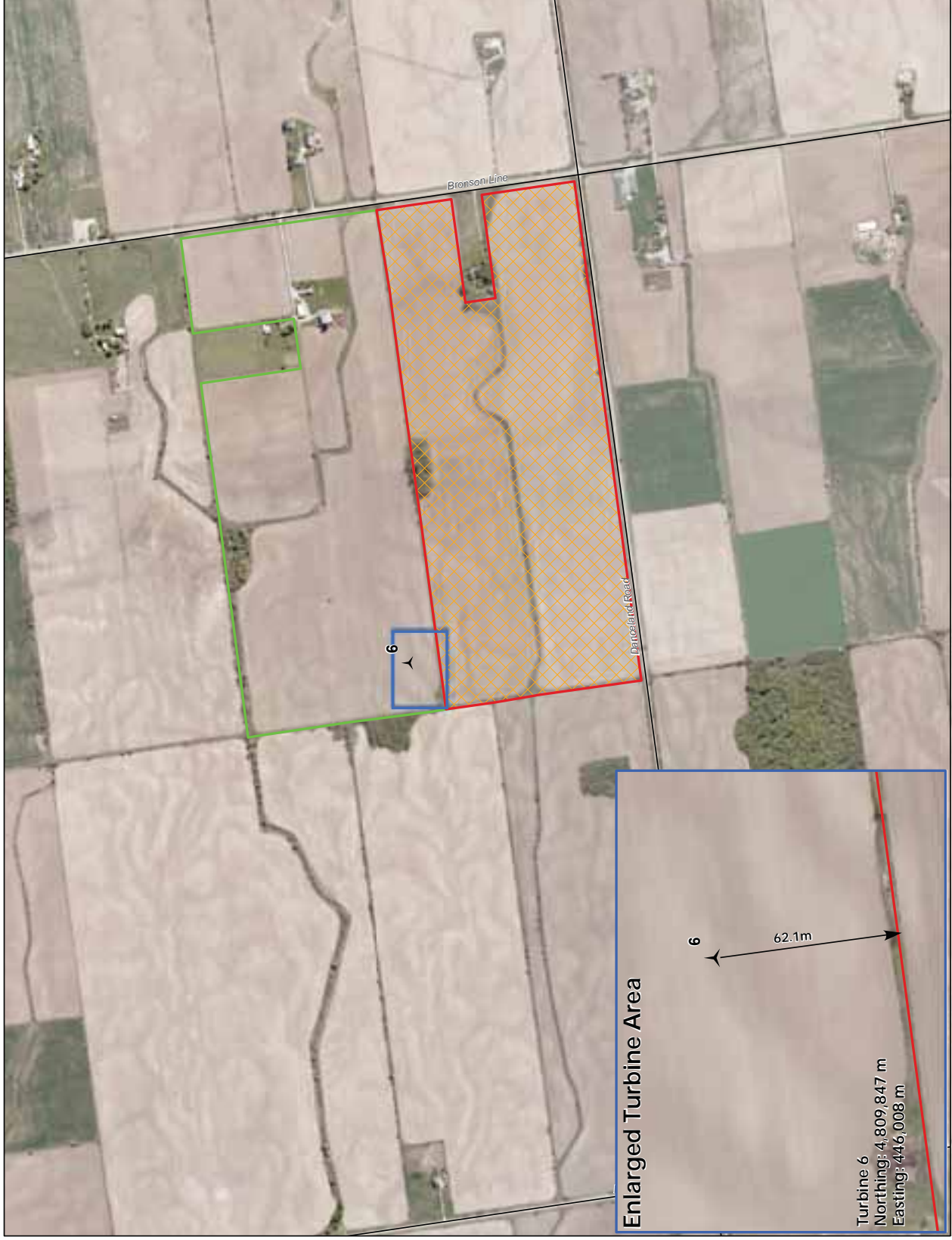
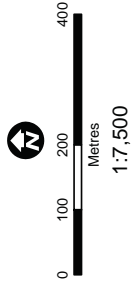
Huron County, Ontario

Parcel Boundary Setback Reduction Analysis

Legend

- Turbine Location
- Host Land Parcel
CON 13 PT LOT 27
- Neighbouring Land Parcel
CON 13 LOT 26
- Required Lotline Setback**
 - Existing Agreement - No Setback Required
 - No Agreement - 60m Setback With Assessment

Turbine 6





Bluewater Wind Energy Centre

Huron County, Ontario

Parcel Boundary Setback Reduction Analysis

Legend

Turbine Location

Host Land Parcel
PT LOT 11 CON 12;
PT LOT 12 CON 12

Neighbouring Land Parcel
CON 11 PT LOT 12

Required Lotline Setback

Existing/Pending Agreement -
No Setback Required

No Agreement - 60m Setback
With Assessment

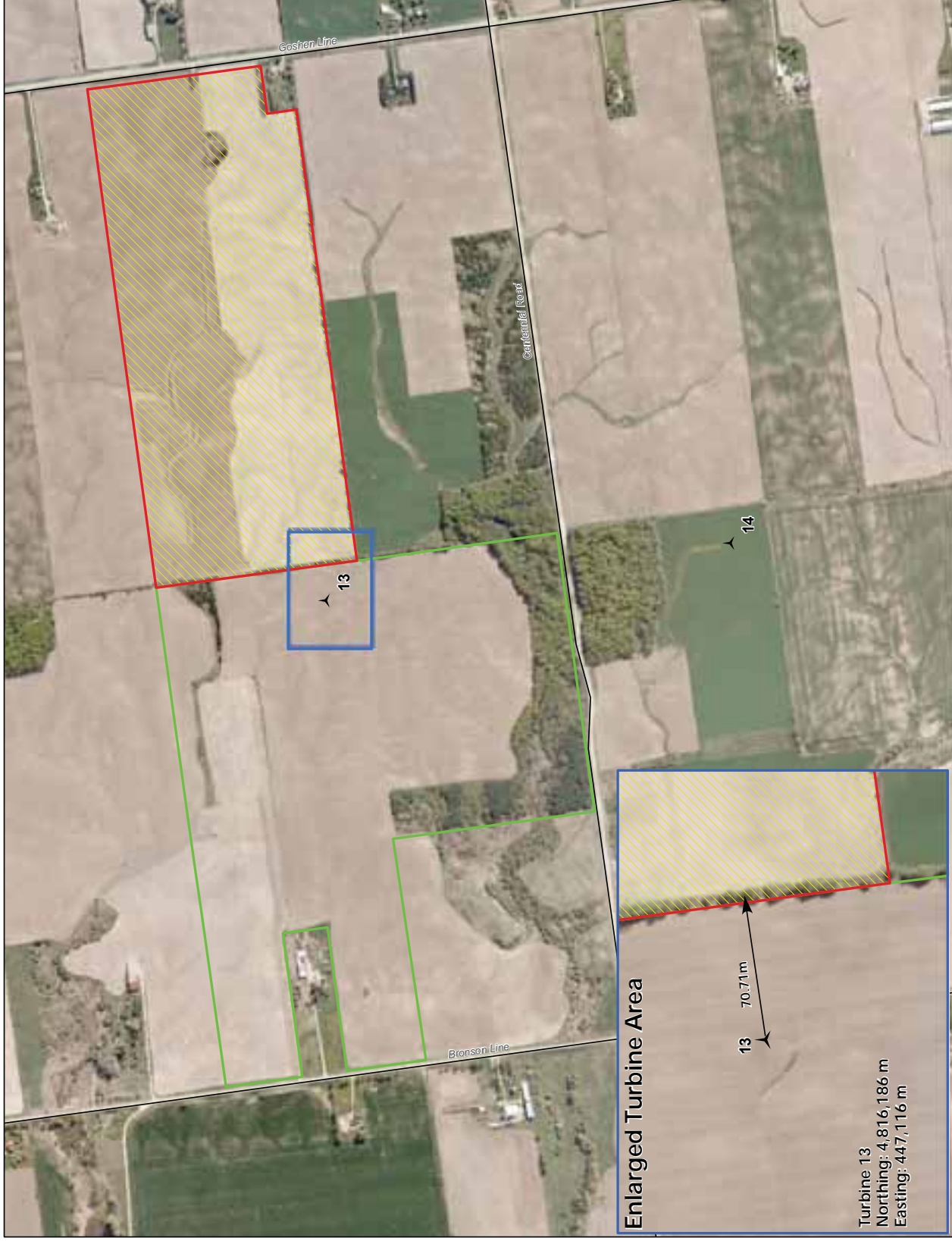
Turbine 13



0 100 200 400
Metres

1:7,500

NAD 1983 UTM Zone 17N



Enlarged Turbine Area

13 70.71m

Turbine 13
Northing: 4,816,186 m
Easting: 447,116 m



Bluewater Wind Energy Centre

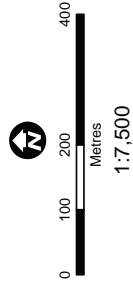
Huron County, Ontario

Parcel Boundary Setback Reduction Analysis

Legend

- Turbine Location
- Host Land Parcel
CON 12 PT LOT 09 PT LOT 10
- Neighbouring Land Parcel
CON 11 PT LOT 10
- Required Lotline Setback
 - Existing Agreement - No Setback Required
 - No Agreement - 60m Setback With Assessment

Turbine 14





Bluewater Wind Energy Centre

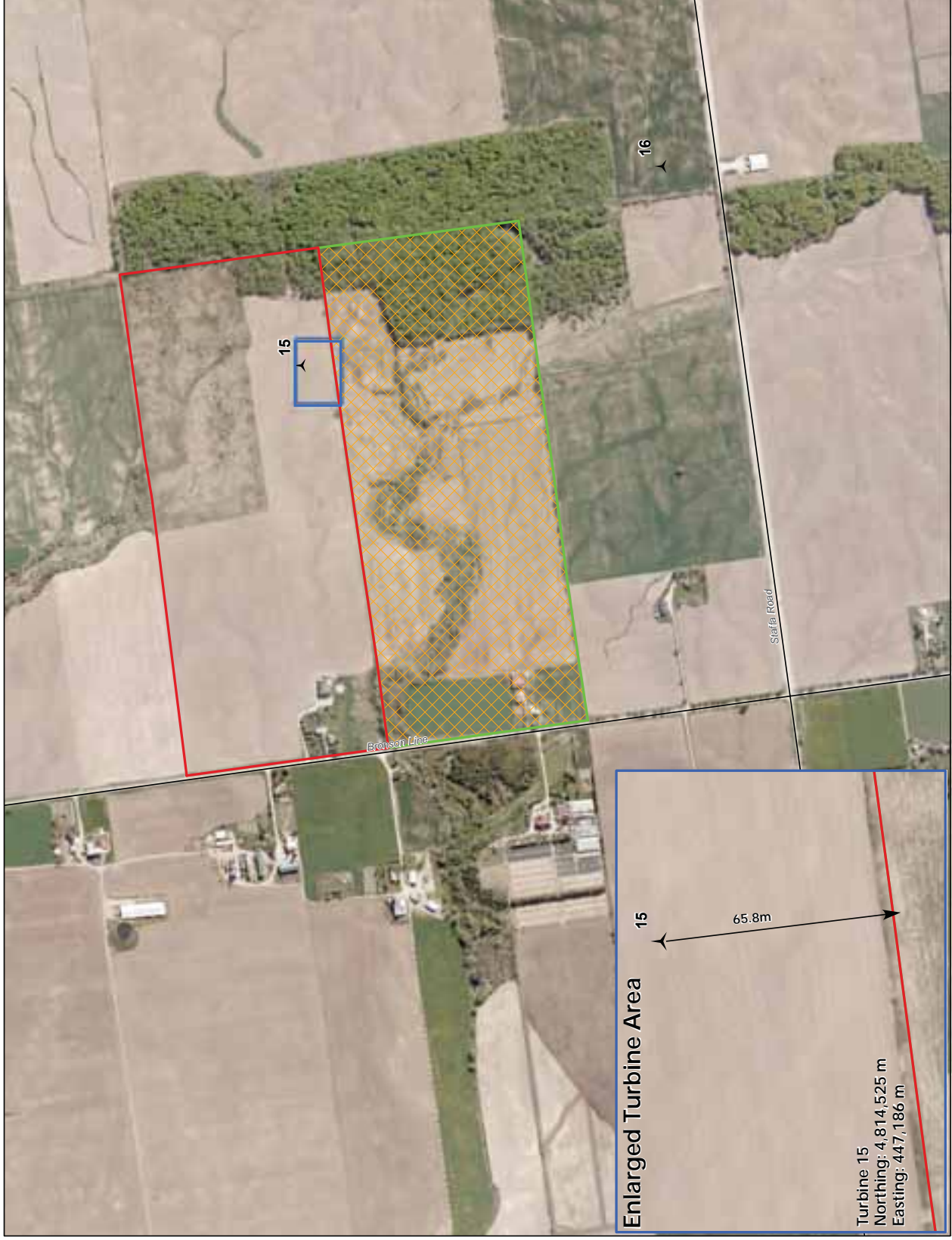
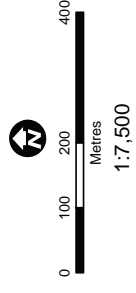
Huron County, Ontario

Parcel Boundary Setback Reduction Analysis

Legend

- Turbine Location
- Host Land Parcel
CON 12 LOT 08
- Neighbouring Land Parcel
CON 12 LOT 08
- Required Lotline Setback**
- Existing Agreement - No Setback
Required
- No Agreement - 60m Setback
With Assessment

Turbine 15





Bluewater Wind Energy Centre

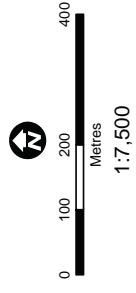
Huron County, Ontario

Parcel Boundary Setback Reduction Analysis

Legend

- Turbine Location
- Host Land Parcel
CON 11 PT LOT 6
- Neighbouring Land Parcel
CON 12 LOT 6
- Required Lotline Setback**
 - Existing Agreement - No Setback Required
 - No Agreement - 60m Setback With Assessment

Turbine 16





Bluewater Wind Energy Centre

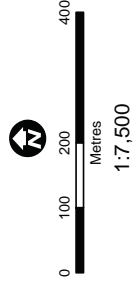
Huron County, Ontario

Parcel Boundary Setback Reduction Analysis

Legend

- Turbine Location
- Host Land Parcel
CON 9 SPT LOT 17
- Neighbouring Land Parcel
CON 9 N PT LOT 16
- Required Lotline Setback**
 - Existing Agreement - No Setback Required
 - No Agreement - 60m Setback With Assessment

Turbine 22





Bluewater Wind Energy Centre

Huron County, Ontario

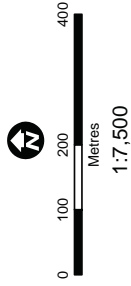
Parcel Boundary Setback Reduction Analysis



Legend

- Turbine Location
- Host Land Parcel
PY LOT 9 CON 9;
PT LOT 10 CON 9
- Neighbouring Land Parcel
PT LOT 8 CON 9;
PT LOT 9 CON 9
- Required Lotline Setback
- Existing Agreement - No Setback
Required
- No Agreement - 60m Setback
With Assessment

Turbine 39



NAD 1983 UTM Zone 17N