

NOTICE OF PUBLIC MEETING #1 CONESTOGO WIND FARM PROJECT

The Study

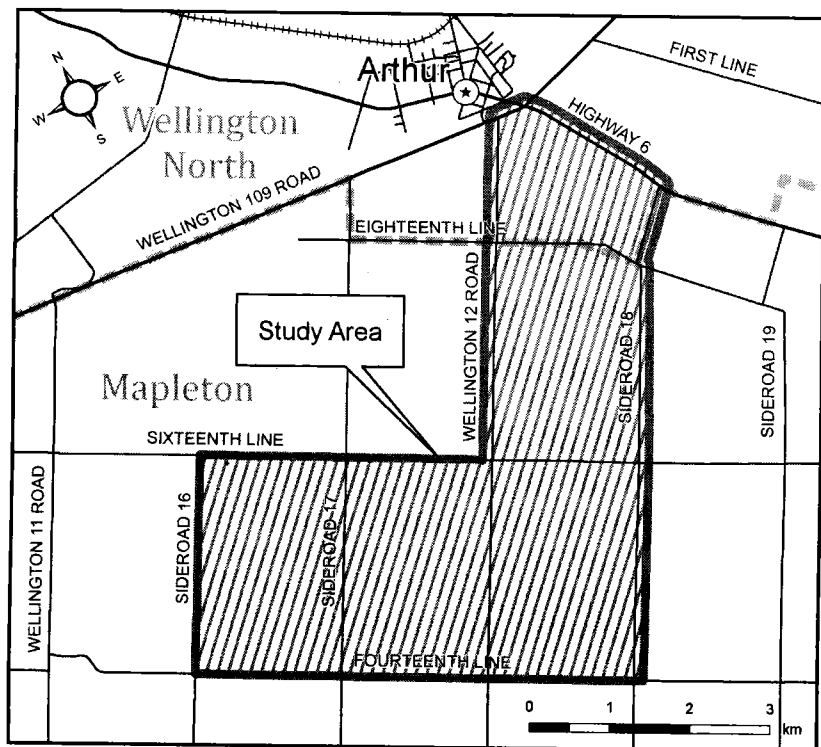
In response to the Government of Ontario's objective to increase renewable power generation in the Province, NextEra Energy Canada, ULC, formerly known as FPLE Canadian Wind, ULC is proposing to develop a wind electricity project within the study area annotated in this Notice. This project was initiated previously by Conestogo Wind, ULC (a wholly owned subsidiary of FPLE Canadian Wind ULC) with the issuance of Notice of Project Commencement and the holding of a Public Information Centre held in March 2007. The initial work was done under the former Environmental Assessment approval process which was replaced by the Province of Ontario Renewable Energy Approvals process on September 24, 2009.

Under the Renewable Energy Approval a key part of the approval process for each project is the undertaking of public consultation. The purpose of this Notice is to invite your continued participation in the approvals and dialogue process.

The study area and size of the wind farm project have been modified since initially proposed. The new study area covers lands in Wellington County and is generally bounded in the north by Highway 6, in the east by Sideroad 18, in the south by Fourteenth Line and in the west by Sideroad 16, as shown in the study area map. Within this study area, the proponent is proposing a project consisting of twelve (12) wind turbines with a total electrical generation capacity of approximately 18 megawatts to 25.3 megawatts that will interconnect into the distribution grid along Highway 6.

The Proponent

NextEra Energy Canada, ULC is a wholly owned subsidiary of NextEra Energy Resources LLC, a global leader in wind energy generation with a current operating portfolio of over 8,400 wind turbines across North America.



The Process

The environmental approvals process is being conducted in accordance with the Renewable Energy Approvals (O.Reg. 359/09) under Part V.0.1 of the Environmental Protection Act and the Canadian Environmental Assessment Act (CEAA). The applicable guidelines that are being followed are the "Renewable Energy Approvals" (September 2009) provided by the Ontario Ministry of the Environment and the "Environmental Impact Statement Guidelines for Screenings of Inland Wind Farms under the CEAA". The provincial and federal approvals processes include public, aboriginal and review agency consultation, assessment of the impacts of the proposed project, and identification of measures to mitigate any potential adverse impacts. Upon completion of the background studies and reports required for a Renewable Energy Approval application, these studies will be made available to the public for review prior to the second public meeting.

The public meeting will be held to provide a general overview of the project (including the revised study area and electrical generation capacity) and the Renewable Energy Approvals process and to seek public input. Turbine locations will not be determined until completion of the environmental studies. We invite the public to attend the meeting so that we can answer your questions and receive your feedback.

Public Meeting # 1

Date: December 2, 2009

Time: 5 pm to 8 pm

Location: Moorefield Community Centre
Ball Ave., Moorefield, ON

Comments

Communication is critical to this process and we work hard to communicate fully and freely with our stakeholders during the approval process and throughout the construction and long term operations. We want to be your first and best source of information about the project. We hope that you will want to learn more about this project and will contact the project team member to be added to our mailing list. If you attended the previous Public Information Centre (March 2007) and provided contact information, we have maintained the mailing list that was developed and you will be added to the revised project mailing list. However please contact us if your contact information has changed since March 2007. We are interested in hearing comments and answering questions you may have about the proposed project. Please note that, with the exception of personal information, all comments will become part of the public record.

Please contact the following team member if you have any questions or comments or wish to obtain more information on the project, or visit the project Website at <http://www.CanadianWindProposals.com>.

Mr. Thomas Bird
Project Manager, Environmental Services
NextEra Energy Canada, ULC
5500 North Service Road, Suite 205
Burlington, Ontario L7L 6W6
Phone: 1-877-257-7330
Fax: 905-335-5731
Email: conestogo.wind@nexteraenergy.com



NOTICE OF PUBLIC MEETING #1 CONESTOGO WIND FARM PROJECT

The Study

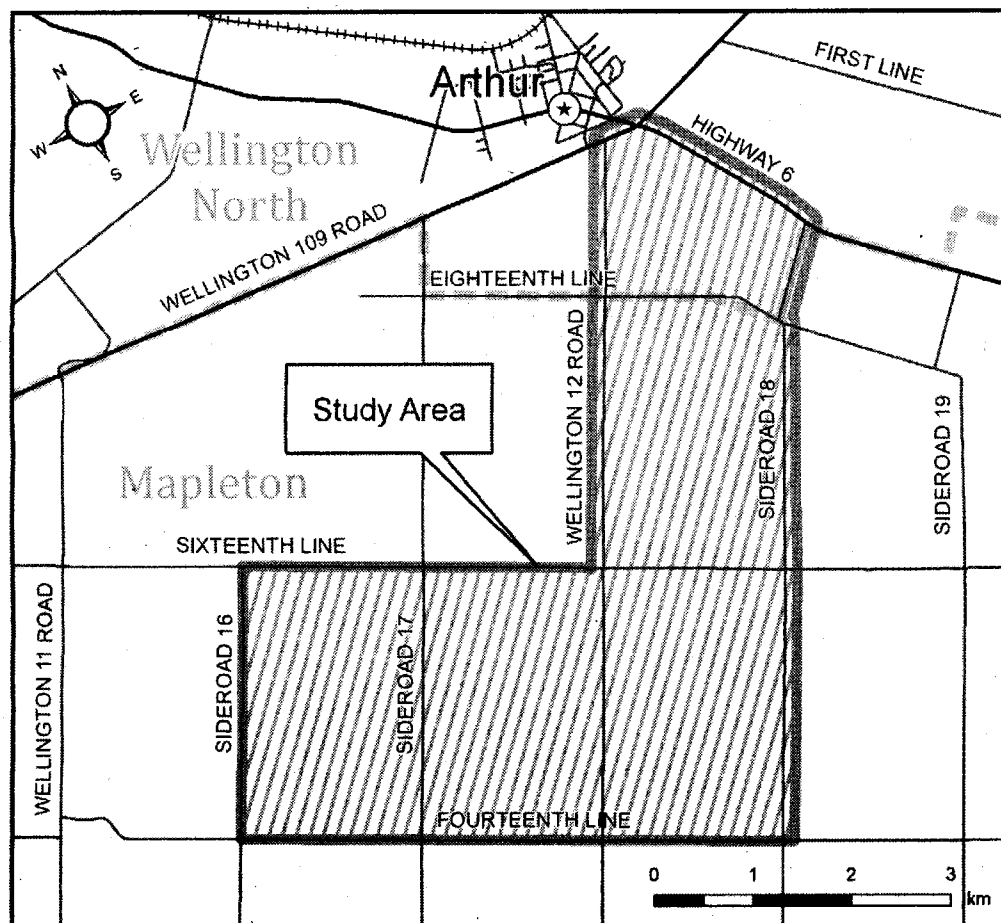
In response to the Government of Ontario's objective to increase renewable power generation in the Province, NextEra Energy Canada, ULC, formerly known as FPLE Canadian Wind, ULC is proposing to develop a wind electricity project within the study area annotated in this Notice. This project was initiated previously by Conestogo Wind, ULC (a wholly owned subsidiary of FPLE Canadian Wind ULC) with the issuance of Notice of Project Commencement and the holding of a Public Information Centre held in March 2007. The initial work was done under the former Environmental Assessment approval process which was replaced by the Province of Ontario Renewable Energy Approvals process on September 24, 2009.

Under the Renewable Energy Approval a key part of the approval process for each project is the undertaking of public consultation. The purpose of this Notice is to invite your continued participation in the approvals and dialogue process.

The study area and size of the wind farm project have been modified since initially proposed. The new study area covers lands in Wellington County and is generally bounded in the north by Highway 6, in the east by Sideroad 18, in the south by Fourteenth Line and in the west by Sideroad 16, as shown in the study area map. Within this study area, the proponent is proposing a project consisting of twelve (12) wind turbines with a total electrical generation capacity of approximately 18 megawatts to 25.3 megawatts that will interconnect into the distribution grid along Highway 6.

The Proponent

NextEra Energy Canada, ULC is a wholly owned subsidiary of NextEra Energy Resources LLC, a global leader in wind energy generation with a current operating portfolio of over 8,400 wind turbines across North America.



The Process

The environmental approvals process is being conducted in accordance with the Renewable Energy Approvals (O.Reg. 359/09) under Part V.0.1 of the Environmental Protection Act and the Canadian Environmental Assessment Act (CEAA). The applicable guidelines that are being followed are the "Renewable Energy Approvals" (September 2009) provided by the Ontario Ministry of the Environment and the "Environmental Impact Statement Guidelines for Screenings of Inland Wind Farms under the CEAA". The provincial and federal approvals processes include public, aboriginal and review agency consultation, assessment of the impacts of the proposed project, and identification of measures to mitigate any potential adverse impacts. Upon completion of the background studies and reports required for a Renewable Energy Approval application, these studies will be made available to the public for review prior to the second public meeting.

The public meeting will be held to provide a general overview of the project (including the revised study area and electrical generation capacity) and the Renewable Energy Approvals process and to seek public input. Turbine locations will not be determined until completion of the environmental studies. We invite the public to attend the meeting so that we can answer your questions and receive your feedback.

Public Meeting # 1

Date: December 2, 2009

Time: 5 pm to 8 pm

Location: Moorefield Community Centre
Ball Ave., Moorefield, ON

Comments

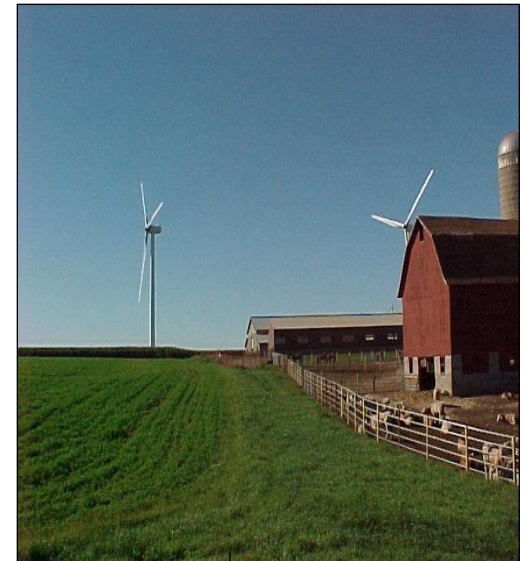
Communication is critical to this process and we work hard to communicate fully and freely with our stakeholders during the approval process and throughout the construction and long term operations. We want to be your first and best source of information about the project. We hope that you will want to learn more about this project and will contact the project team member to be added to our mailing list. If you attended the previous Public Information Centre (March 2007) and provided contact information, we have maintained the mailing list that was developed and you will be added to the revised project mailing list. However please contact us if your contact information has changed since March 2007. We are interested in hearing comments and answering questions you may have about the proposed project. Please note that, with the exception of personal information, all comments will become part of the public record.

Please contact the following team member if you have any questions or comments or wish to obtain more information on the project, or visit the project Website at <http://www.CanadianWindProposals.com>.

We welcome you to the Conestogo Wind Farm Project

Public Meeting

December 2, 2009



FPL Group is North America's premier clean energy operator and developer

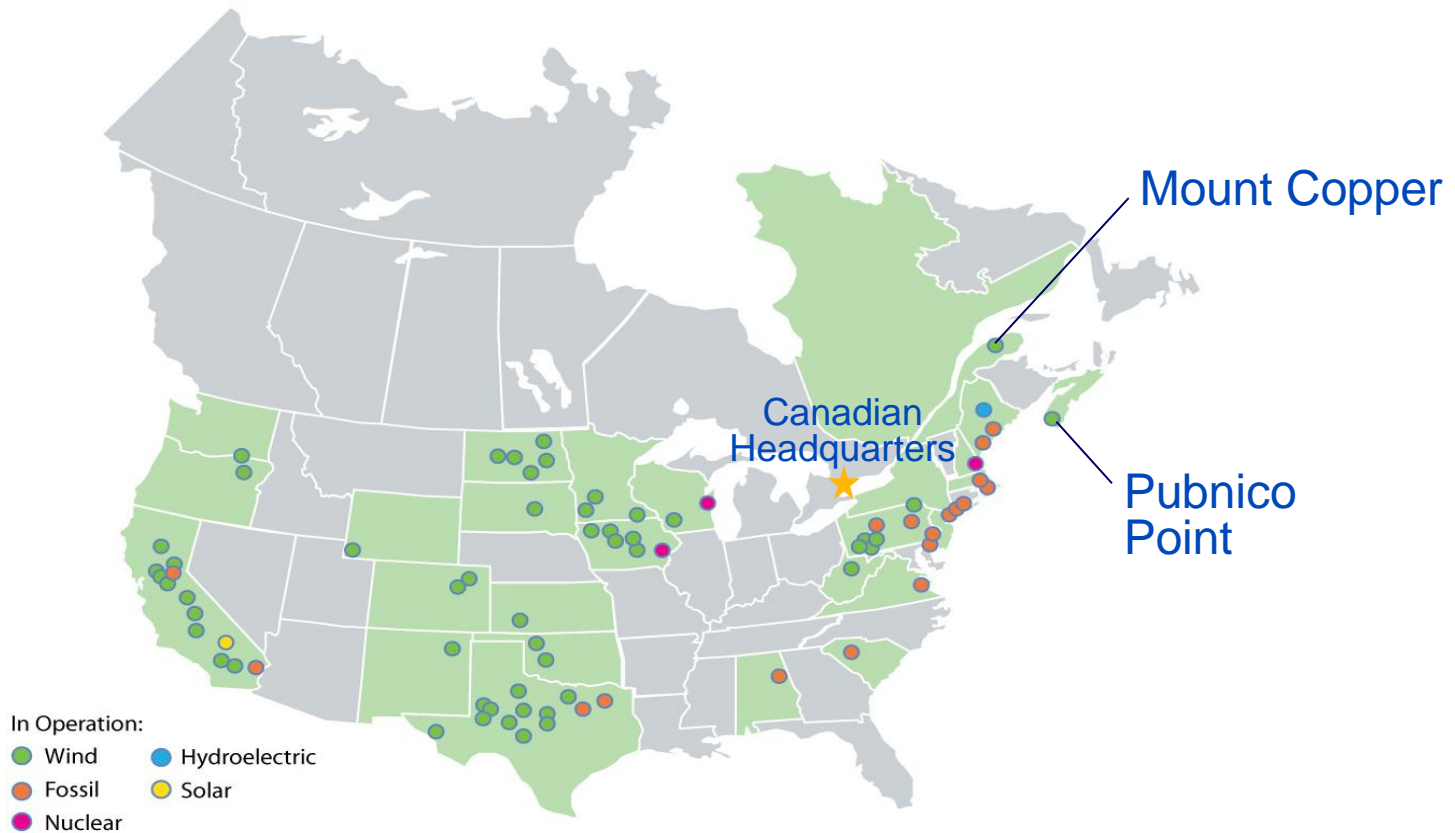
NextEra Energy Canada – Who Are We?

- **Largest wind generator in North America**
- **Largest solar generator in North America**
- **Experienced developer, builder, operator**
- **Financial strength**
- **A safe and reliable operator**
- **A long-term partner in communities**



NextEra Energy Resources is subsidiary of FPL Group, Inc., (NYSE: FPL).

NextEra Energy's North American Portfolio



Environmental Responsibility

- Environmental studies determine suitability of prospective sites
- Land and wildlife respected and protected during construction and operations
- Land restored after construction
- Recognized nationally for environmental leadership



Ontario's Green Energy and Green Economy Act

- **New Ontario Legislation passed in June 2009 to govern renewable energy**
- **Key drivers:**
 - Ontario commitment to phase out coal generation by 2014
 - Boost economic activity
 - Create new green industries & jobs
- **Major components include the Renewable Energy Approval (REA) and the Feed-in Tariff (FIT)**
 - REA prescribes mandatory setbacks and environmental studies for project approval – replaces the EA process
 - FIT guarantees specific rates for all types of renewable energy
- **FIT Program has requirements for Ontario content in Projects – helps the Ontario economy**

Objective is to make Ontario a Global Leader in Renewable Energy

Conestogo Wind Energy Centre Project Scope

Project Size: 18 – 25.3 Megawatts

Number of Turbines: up to 12 turbines

Technology: GE xle 1.5 MW or
Siemens 2.3 MW

Hub Height: 80 m (GE)
80 m (Siemens)

Rotor Diameter: 82.5 m (GE)
93 m (Siemens)

Will provide electricity to over 5,400 homes
(based on 300 homes/MW)



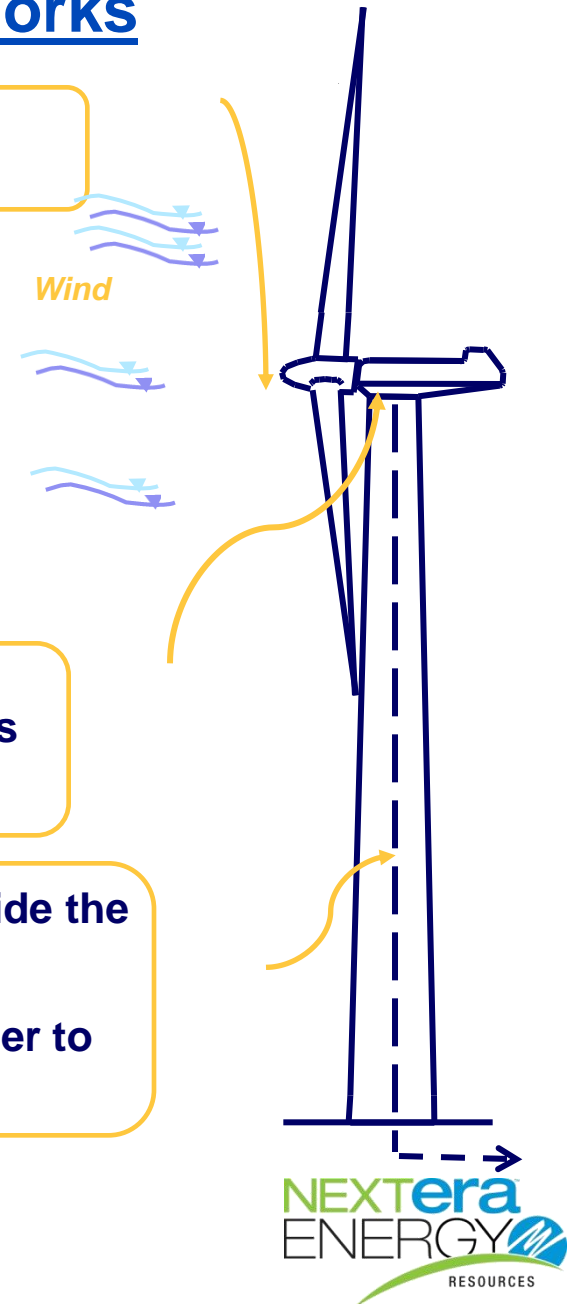
How the Technology Works

A computer turns the rotor to face the wind.

The blades begin to rotate when winds reach 8 km/h.

Inside the nacelle, the blades drive a shaft that drives a generator through a gearbox and converts the mechanical power to electrical power.

- The electricity is carried down the cables inside the tower.
- Underground distribution lines carry the power to the electrical grid.



GE 1.5 xle Wind Turbine



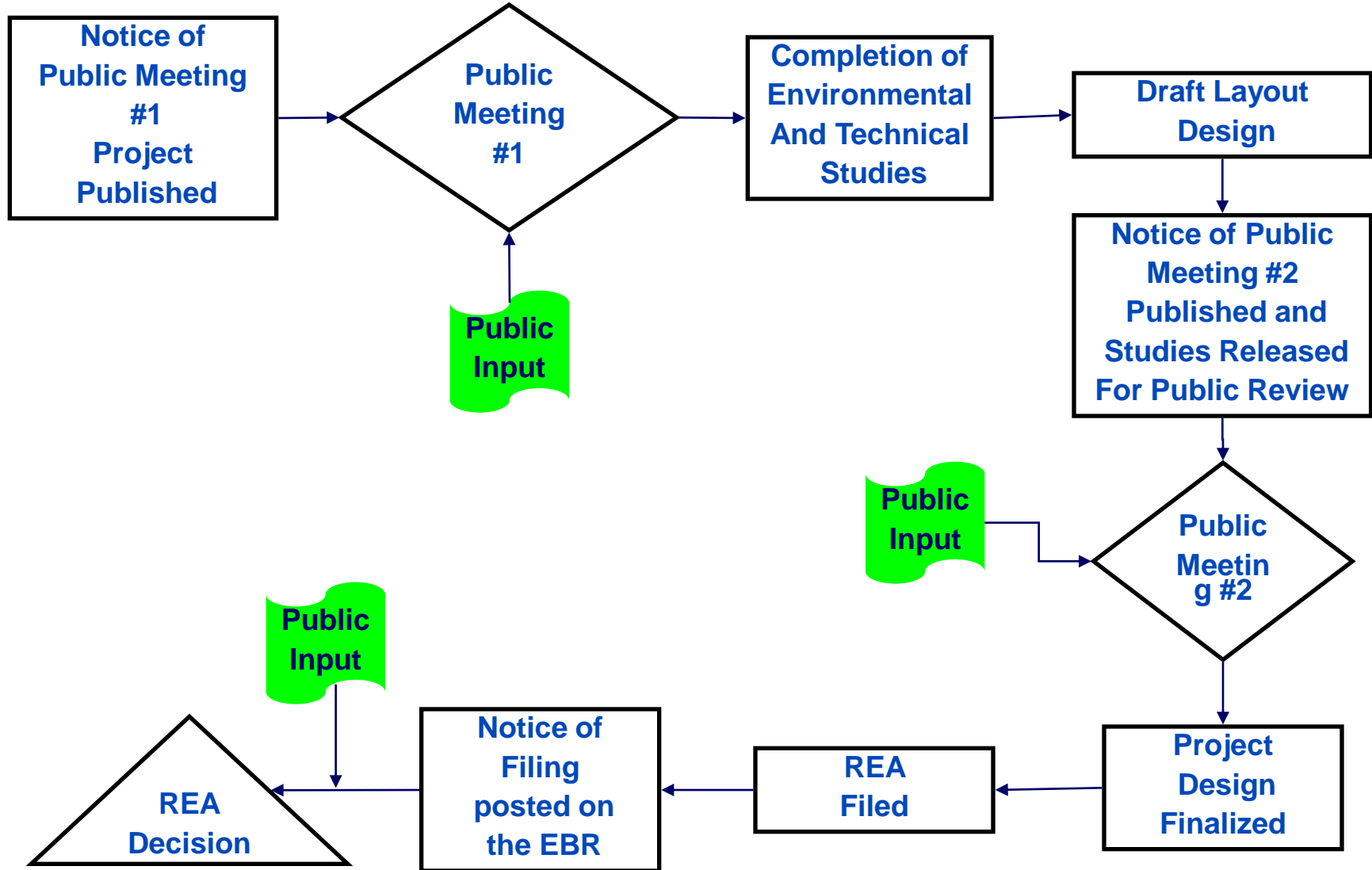
3 Blades: 82.5 m diameter

**Nacelle with Gearbox
and Generator**

**Tower: 80 m height to
hub**

Foundation

Province of Ontario Renewable Energy Approvals Process



Committed to identifying public concerns and issues related to the project

Gathering Environmental Information (Studies)

- **Environmental experts working to understand the potential environmental effects related to the project such as:**
 - Avian, bat & wildlife impacts (studies underway)
 - Setbacks per Provincial Requirements (from residences, natural features, roads, etc.)
 - Sound impact analysis
 - Shadow flicker
 - Telecommunication/radar interference studies
 - Archaeological studies
 - Aboriginal consultations



**Environmental process is detailed and comprehensive
with extensive consultation.**

Agency Consultation

Discussions already underway with the following:

- Local Municipalities
- First Nation communities and Métis
- Ministry of Natural Resources
- Ministry of Environment
- Ministry of Culture
- Ministry of Transportation
- Environment Canada
- Grand River Conservation Authority
- Transport Canada
- NAV Canada

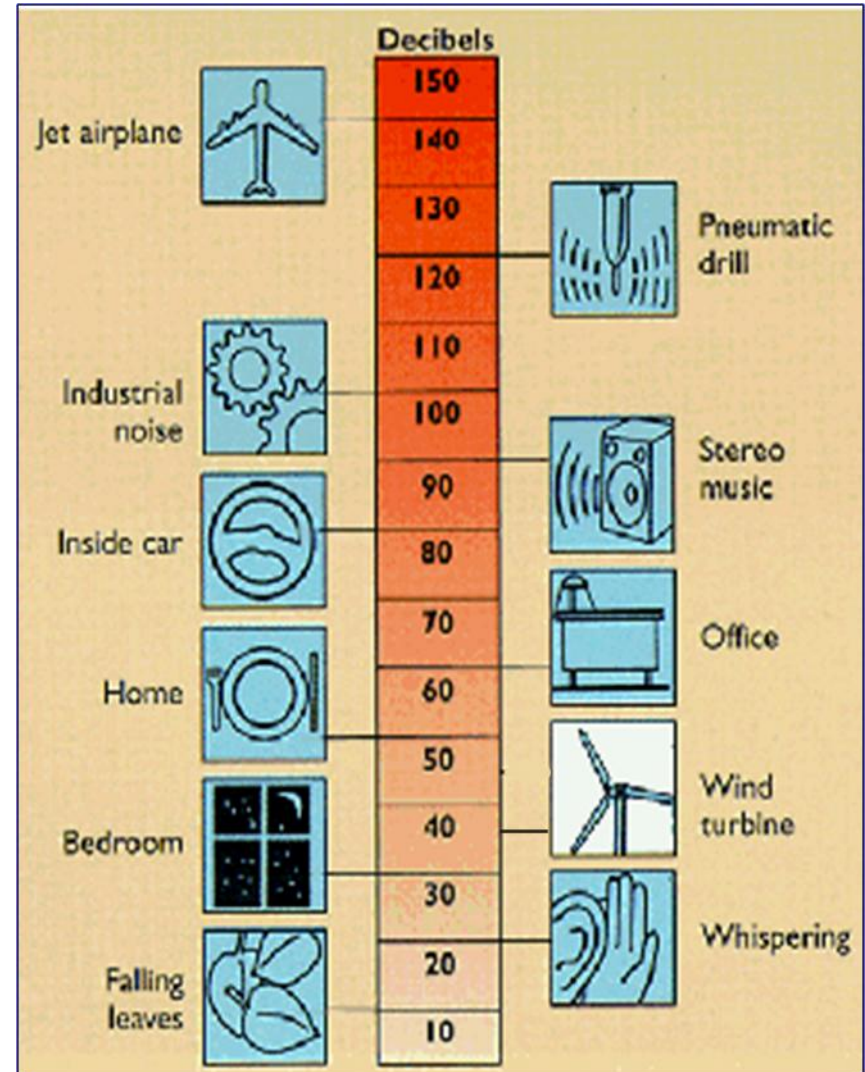
Sound Levels

Turbines are quiet enough so that people can have a normal conversation at the foot of an operating turbine.

The sound of a car passing by 100 meters away at 65 km/h is about 55 dB, and the sound of a library is 35-37 dB.

Maximum 40 dBA at receptors (homes, schools, churches).

Turbines would be set back from receptors at least 550 m; a detailed sound analysis will be conducted.



Reports Being Prepared and Completed for Public Review

- **Project Description**
- **Construction Plan**
- **Design and Operations Report**
- **Decommissioning Plan**
- **Detailed Studies**
 - Sound Analysis
 - Natural Features
 - Archaeological
 - Shadow flicker



Construction Experience



Build access roads



Build substation



Prepare turbine foundations



Lay underground cable



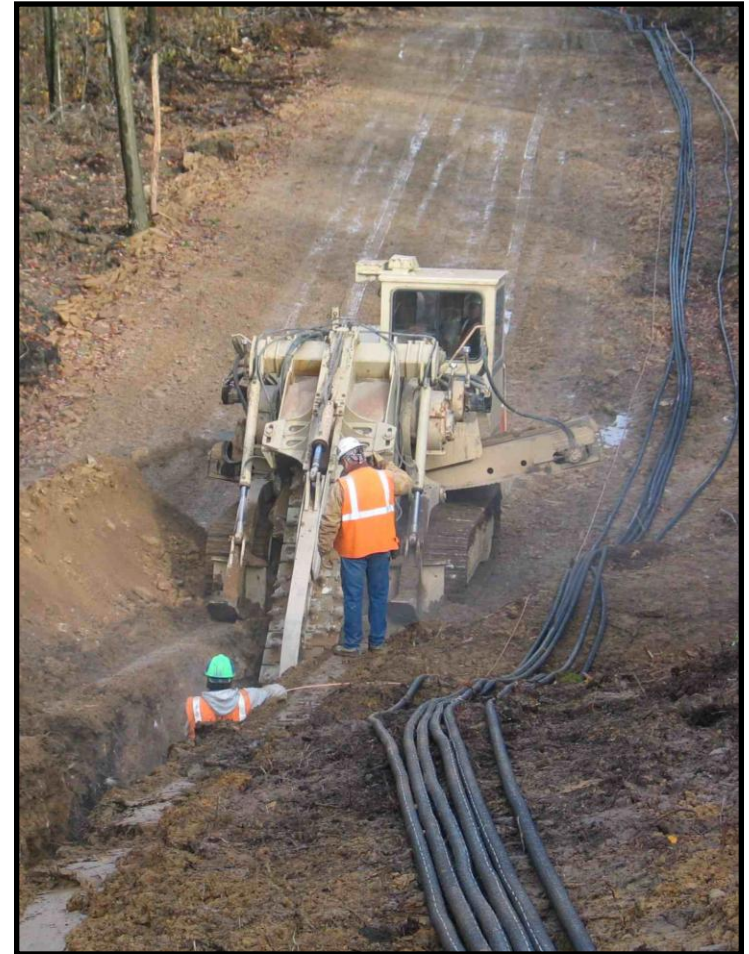
Deliver components



Erect turbines

Major Construction Work Phases

- **Civil Construction Work**
Surveying, clearing, roads, foundations, crane pads
- **Electrical Construction Work**
Collection, substation
- **Logistics/Material control**
Deliver and unloading of equipment, turbines, towers and blades
- **Erection of Turbines**
Assembly and installation of turbines
- **Testing and Commissioning**
- **Restoration of the Land**
Restoration land, fences, driveways, etc.



NextEra Energy believes in “prevention” versus “event response” through component condition and performance assessment.

Operations and Maintenance

- Experienced operations and maintenance managers on site
- On-going training and mentoring programs to maintain safe and efficient operation
- Site staff supported by centralized maintenance and environmental staff
- Supported by 24/7 fleet monitoring and diagnostic center
- Local operations team available to answer questions and address your concerns



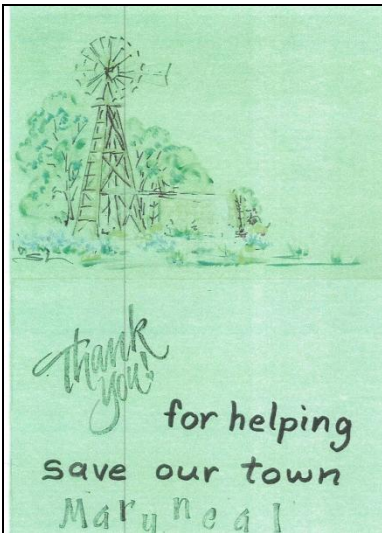
Fleet Performance Diagnostics Center

NextEra Energy Canada in the community



Supporting community events across the country

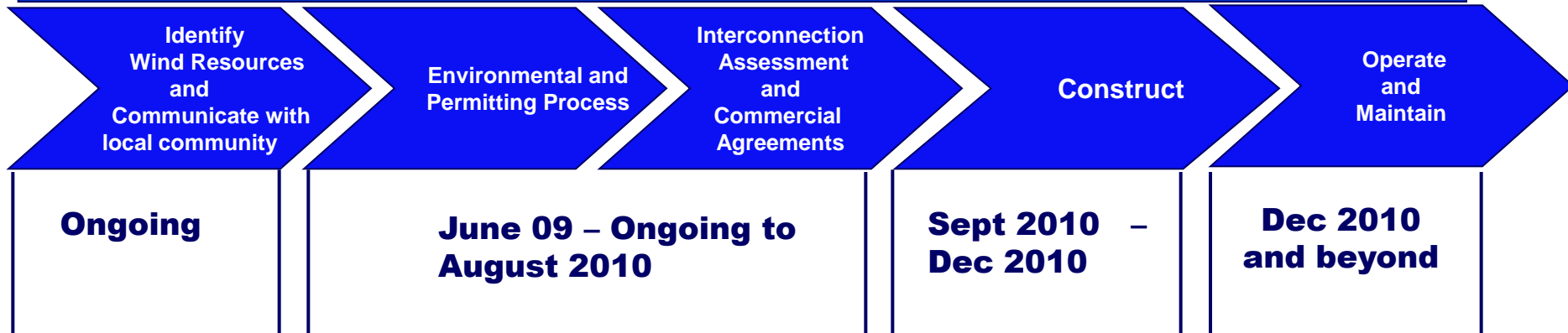
Education



When our neighbors need us

Our Integrated Development Timeline

Community relationships are the foundation for mutual success.



Next Steps

- Complete Studies
- Application to the Ontario Power Authority for the Feed In Tariff Program
- Finalize FIT Contract
- Continue Consultation
- Finalize Project Site Layout
- Draft documents available for public review
- Public Meeting # 2
- Submit REA application to the Ministry of Environment



Community Engagement Plan

Landowner/municipal outreach	began Oct '07
Notice of Project Study Commencement	Nov '09
Public Meeting #1	Dec '09
Draft REA documents for Public Review	Jan '10
Public Meeting #2	Mar '10*
REA application submission	May '10*
Aboriginal communications	ongoing

* Date to be determined

A successful element to every project development is **ongoing** communications with stakeholders. Between milestones our efforts have strived to achieve ongoing dialogue with the local community, government agencies and corporate neighbours as we integrate into this community.



NextEra Energy Canada Public Information Centre Survey

Personal Information (optional)

Name: _____

Address: _____

Phone: _____

Email: _____

1. How did you hear about the Public Information Centre (PIC)? (circle all that apply)
 - a) Invitation sent by NextEra Energy Canada?
 - ☒ b) Newspaper
 - c) Friend or family member
 - d) Other, please specify: _____
2. What questions or concerns did you have about the Conestogo Wind Energy project?

THIS IS
BULL !!

3. Were your questions/concerns answered to your satisfaction? If no, please explain.



4. What remaining questions or concerns do you have about this project?

5. In your opinion, do you think this project will be beneficial to your community?
If yes, what do you think the benefits of this project will be? If no, why not?

6. What did you learn about NextEra Energy Canada or the Conestogo Wind Energy project?



7. How would you prefer to receive further information about the project(s)? Circle all that apply:
- a) by phone
 - b) by mail
 - c) in person
 - d) at another open house event
 - e) by email
 - f) by the local newspaper, please specify the paper: _____
 - g) I don't want to receive further information about this project

If you would prefer to mail or fax your completed survey, please send to:
NextEra Energy Canada
Att: Thomas Bird
5500 North Service Road, Suite 205
Burlington, ON L7L 6W6

or

please fax to (905) 335-5731



NextEra Energy Canada Public Information Centre Survey

Personal Information (optional)

Name:

Emma Dixon.

Address:

7811 Line 14 Alma, ON

Phone:

519-505-4466.

Email:

emma@theplumberswife.ca

1. How did you hear about the Public Information Centre (PIC)? (circle all that apply)
 - a) Invitation sent by NextEra Energy Canada?
 - b) Newspaper
 - ☒ c) Friend or family member
 - d) Other, please specify: _____

2. What questions or concerns did you have about the Conestogo Wind Energy project?

-What are the health concerns? You can't deny the reports of on-going health problems people who are within a certain area of these turbines are having.

3. Were your questions/concerns answered to your satisfaction? If no, please explain.

-No

4. What remaining questions or concerns do you have about this project?

I want to see real evidence that these turbines are having no negative effect healthwise on any living beings.

- How many people in your community have a ghostly turbine in your backyards?

5. In your opinion, do you think this project will be beneficial to your community? If yes, what do you think the benefits of this project will be? If no, why not?

- Of course not. No amount of physical concern we'll have is worth the small amount of compensation we may receive.

- In a small community like ours there is no need have neighbors having to "choose sides" there's a sense of family that is lost.

6. What did you learn about NextEra Energy Canada or the Conestogo Wind Energy project?

- That they plan to have these constructed alot sooner than was proposed.

- It was very misleading.



7. How would you prefer to receive further information about the project(s)? Circle all that apply:
- a) by phone
 - b) by mail
 - c) in person
 - d) at another open house event
 - ☒ e) by email
 - f) by the local newspaper, please specify the paper: _____
 - g) I don't want to receive further information about this project

If you would prefer to mail or fax your completed survey, please send to:
NextEra Energy Canada
Att: Thomas Bird
5500 North Service Road, Suite 205
Burlington, ON L7L 6W6

or

please fax to (905) 335-5731

WELLINGTON NORTH/MAPLETON LAND OWNERS

INDUSTRIAL WIND TURBINE INSTALLATIONS ARE A TOPIC IN OUR COMMUNITY

- 1 WHAT DO YOU KNOW ABOUT THE PROPOSED WIND TURBINE PROJECTS?
- 2 WHO HAS CONTACTED YOU ABOUT IT?
- 3 HAS ANYONE OFFERED TO DISCUSS A LAND LEASE WITH YOU?
- 4 WHAT PLANS ARE THERE FOR WIND TURBINES IN YOUR IMMEDIATE AREA?
- 5 IS THE FUTURE OF OUR ECOLOGICALLY DIVERSE AND BEAUTIFUL WELLINGTON NORTH/MAPLETON GOING TO BE INDUSTRIAL POWER PRODUCTION?

Developers are promoting more and more industrial wind projects in the area. There are over 17 turbines proposed so far for WELLINGTON NORTH/MAPLETON. Please consider the following advice:

1. If you are approached by a wind developer or someone who is offering a lease for a wind project, **CONTACT A LAWYER BEFORE DISCUSSING ANY LEGAL AGREEMENT OR CONTRACT.**
2. Regardless of how "green" you perceive this intermittent energy source to be, **IT IS STILL A "FOR PROFIT" INDUSTRIAL INSTALLATION THAT NEEDS TO BE SITED APPROPRIATELY.** Just because it is emissions free, does not mean it is impact free! These projects cannot move forward without the cooperation of individual land owners like you, so -
3. **EDUCATE YOURSELF!** There is a great deal of information available about industrial turbines. Some of the major issues are
 - ADVERSE HEALTH EFFECTS FROM NOISE AND VIBRATION
 - HOW FAR SHOULD TURBINES BE SITED FROM HOMES, SCHOOLS
 - VISUAL IMPACT & SHADOW FLICKER
 - FRAGMENTATION OF WILDLIFE HABITAT
 - IMPACT ON BIRDS AND BATS
 - DESTRUCTION OF NATURAL AND SOCIAL ENVIRONMENTS
 - IMPACT ON PROPERTY VALUES

Here are two excellent sources of information, articles and documents about wind energy.
The Industrial Wind Action Group www.windaction.org National Wind Watch

www.wind-watch.org

This is your community. Get informed. Get involved.

For more information about what you can do go to

www.windconcernsmaine.org

**Want to find out who else is concerned in your area? Call
BEVERLY AT 519-848-2899**

HOW CAN I HELP?

INDUSTRIAL WIND TURBINES FAIL TO DELIVER THE GOODS

We have learned from other industrial wind projects that there can be serious negative impact on human health and safety, neighbour relationships, family farms, wildlife, natural environment and property values.

Wind power is not a scientifically sound solution to help with global warming. There is no proof anywhere in the world that CO2 has been materially reduced or that any coal plant has been shut down due to wind power added to the grid. Wind power is intermittent and needs full backup generation capabilities.

- Become informed about wind turbine installations and adverse health effects. Tell your friends and neighbours about victims in Ontario and world wide.
- Voice your objections to local, provincial and federal govt. Draft letters and email addresses are provided on the Wind Concern website.
www.windconcernsontario.org
- Participate in email campaigns targeted to local, Federal and the McGuinty Liberal government. Again, draft letters and email addresses provided on the same website.
- Meet with your local councillors, Federal MP and your Provincial MPP and voice your objections.
- Ask your local council to send a letter of objection to the loss of their municipal voice from the Green Energy Act recently passed and to request that the provincial government do a proper independent health study be done before any more wind turbines are built in this province. We need to put health before wind development.
- Attend meetings organized by your local group. Support and voice your objections at these meetings. Join your local group. Contribute financially. All cost, time and effort to raise awareness is donated.



NextEra Energy Canada Public Information Centre Survey

Personal Information (optional)

Name:

(JIM) JAMES BEER

Address:

RR 4 ARTHUR ON NOG 1A0

Phone:

519 848 3488

Email:

1. How did you hear about the Public Information Centre (PIC)? (circle all that apply)

☒ a) Invitation sent by NextEra Energy Canada?

☒ b) Newspaper

☒ c) Friend or family member

☐ d) Other, please specify: _____

2. What questions or concerns did you have about the Conestogo Wind Energy project?

I asked them to Nicole

3. Were your questions/concerns answered to your satisfaction? If no, please explain.

Pretty Good

4. What remaining questions or concerns do you have about this project?

Tower Locations

5. In your opinion, do you think this project will be beneficial to your community?
If yes, what do you think the benefits of this project will be? If no, why not?

It is dividing the community
- very strong opposition from some people

6. What did you learn about NextEra Energy Canada or the Conestogo Wind Energy project?



7. How would you prefer to receive further information about the project(s)? Circle all that apply:
- a) by phone
 - b) by mail
 - c) in person
 - d) at another open house event
 - e) by email
 - f) by the local newspaper, please specify the paper: _____
 - g) I don't want to receive further information about this project

If you would prefer to mail or fax your completed survey, please send to:
NextEra Energy Canada
Att: Thomas Bird
5500 North Service Road, Suite 205
Burlington, ON L7L 6W6

or

please fax to (905) 335-5731



NextEra Energy Canada Public Information Centre Survey

Personal Information (optional)

Name:

GORD GRANT

Address:

PO BOX 21 DRAYTON ON N0G1P0

Phone:

519-638 0214

Email:

gordo107@bell.net

1. How did you hear about the Public Information Centre (PIC)? (circle all that apply)

a) Invitation sent by NextEra Energy Canada?

b) Newspaper ☒

c) Friend or family member

d) Other, please specify: _____

2. What questions or concerns did you have about the Conestogo Wind Energy project?

Does this project fall within the
Green Energy Act? i.e. set backs
~~up~~

3. Were your questions/concerns answered to your satisfaction? If no, please explain.

Told that the Green Energy Act
applies

4. What remaining questions or concerns do you have about this project?

Will it create or aggravate stray voltage problems in the immediate area?

Loss of prime ag lands to ~~the~~ access roads?
Access to grid for biogas affected?
projects

5. In your opinion, do you think this project will be beneficial to your community?
If yes, what do you think the benefits of this project will be? If no, why not?

Maybe yes, maybe no.

6. What did you learn about NextEra Energy Canada or the Conestogo Wind Energy project?

Reasonable understanding of the project
What's the relationship between
NextERA & FPL?



7. How would you prefer to receive further information about the project(s)? Circle all that apply:

- a) by phone
- b) by mail
- c) in person
- d) at another open house event

☒ e) by email

☒ f) by the local newspaper, please specify the paper: Wellington Advertiser

☐ g) I don't want to receive further information about this project

If you would prefer to mail or fax your completed survey, please send to:

NextEra Energy Canada

Att: Thomas Bird

5500 North Service Road, Suite 205

Burlington, ON L7L 6W6

or

please fax to (905) 335-5731



NextEra Energy Canada Public Information Centre Survey

Personal Information (optional)

Name:

Tim + Sue O'Donnell

Address:

RRI, 7627 Jones Baseline W.

Phone:

519-848-3028

Email:

1. How did you hear about the Public Information Centre (PIC)? (circle all that apply)

- ☒ a) Invitation sent by NextEra Energy Canada?
- b) Newspaper
- c) Friend or family member
- d) Other, please specify: _____

2. What questions or concerns did you have about the Conestogo Wind Energy project?

I WANTED TO KNOW IF ANY TOWERS
WOULD BE IN SIGHT OF MY LIVING ROOM
WINDOW

3. Were your questions/concerns answered to your satisfaction? If no, please explain.

NO -

4. What remaining questions or concerns do you have about this project?

5. In your opinion, do you think this project will be beneficial to your community?
If yes, what do you think the benefits of this project will be? If no, why not?

YES - help FOR THE LAND owners
WITH TOWERS.

We will need LESS FOSSIL Fuels

6. What did you learn about NextEra Energy Canada or the Conestogo Wind Energy project?



7. How would you prefer to receive further information about the project(s)? Circle all that apply:
- a) by phone
 - ☒ b) by mail
 - c) in person
 - d) at another open house event
 - e) by email
 - f) by the local newspaper, please specify the paper: _____
 - g) I don't want to receive further information about this project

If you would prefer to mail or fax your completed survey, please send to:
NextEra Energy Canada
Att: Thomas Bird
5500 North Service Road, Suite 205
Burlington, ON L7L 6W6

or

please fax to (905) 335-5731



NextEra Energy Canada Public Information Centre Survey

Personal Information (optional) JAMES TAYLOR
Name:

16 Tipperary PLACE, Guelph & 9th Conc.
Address: Arthur

519-763-7145
Phone:

jflajt@msh.com
Email:

1. How did you hear about the Public Information Centre (PIC)? (circle all that apply)

a) Invitation sent by NextEra Energy Canada?

☒ b) Newspaper

c) Friend or family member

d) Other, please specify: _____

2. What questions or concerns did you have about the Conestogo Wind Energy project?

- detail location

- impact studies to be done

- will visual impacts & heritage
resources impacts be considered?

3. Were your questions/concerns answered to your satisfaction? If no, please explain.

- will be interested in project
specifics & the results of the
impact studies

4. What remaining questions or concerns do you have about this project?

maximum size - ?
could it be expanded.

5. In your opinion, do you think this project will be beneficial to your community?
If yes, what do you think the benefits of this project will be? If no, why not?

6. What did you learn about NextEra Energy Canada or the Conestogo Wind Energy project?

overview of the proposed projects
(limited details)



7. How would you prefer to receive further information about the project(s)? Circle all that apply:
- a) by phone
 - b) by mail
 - c) in person
 - d) at another open house event
 - ☒ e) by email
 - f) by the local newspaper, please specify the paper: Advertiser
 - g) I don't want to receive further information about this project

If you would prefer to mail or fax your completed survey, please send to:
NextEra Energy Canada
Att: Thomas Bird
5500 North Service Road, Suite 205
Burlington, ON L7L 6W6

or

please fax to (905) 335-5731



NextEra Energy Canada Public Information Centre Survey

Personal Information (optional)

Name:

Donald C Rogers

Address:

820 Wellington Road 18

Phone:

519-843-7633

Email:

1. How did you hear about the Public Information Centre (PIC)? (circle all that apply)

a) Invitation sent by NextEra Energy Canada?

b) Newspaper

c) Friend or family member

d) Other, please specify: _____

2. What questions or concerns did you have about the Conestogo Wind Energy project?

Would like to build the line
to Ont. Hydro 1 system

3. Were your questions/concerns answered to your satisfaction? If no, please explain.

Yes

4. What remaining questions or concerns do you have about this project?

I think it is a good Project

5. In your opinion, do you think this project will be beneficial to your community?
If yes, what do you think the benefits of this project will be? If no, why not?

Yes and Hope there will work
for line Contractors

6. What did you learn about NextEra Energy Canada or the Conestogo Wind Energy project?

First time because I have Retired from
line but help my son



7. How would you prefer to receive further information about the project(s)? Circle all that apply:
- a) by phone
 - b) by mail
 - c) in person
 - d) at another open house event
 - e) by email
 - f) by the local newspaper, please specify the paper: Wellington Advertiser
 - g) I don't want to receive further information about this project

If you would prefer to mail or fax your completed survey, please send to:
NextEra Energy Canada
Att: Thomas Bird
5500 North Service Road, Suite 205
Burlington, ON L7L 6W6

or

please fax to (905) 335-5731



NextEra Energy Canada Public Information Centre Survey

Personal Information (optional)

Name:

GEORGE MCNAULHT

Address:

7553 18TH LINE, RR#1, ARTHUR

Phone:

519-848-6188

Email:

1. How did you hear about the Public Information Centre (PIC)? (circle all that apply)

- a) Invitation sent by NextEra Energy Canada?
- b) Newspaper
- c) Friend or family member
- d) Other, please specify: A

2. What questions or concerns did you have about the Conestogo Wind Energy project?

DON'T WANT IT.

3. Were your questions/concerns answered to your satisfaction? If no, please explain.

4. What remaining questions or concerns do you have about this project?

IS IT GOING TO LOWER MY
ENERGY BILL

5. In your opinion, do you think this project will be beneficial to your community?
If yes, what do you think the benefits of this project will be? If no, why not?

TIME WILL TELL

6. What did you learn about NextEra Energy Canada or the Conestogo Wind Energy project?



7. How would you prefer to receive further information about the project(s)? Circle all that apply:
- a) by phone
 - b) by mail
 - c) in person
 - d) at another open house event
 - e) by email
 - f) by the local newspaper, please specify the paper: _____
 - g) I don't want to receive further information about this project

If you would prefer to mail or fax your completed survey, please send to:
NextEra Energy Canada
Att: Thomas Bird
5500 North Service Road, Suite 205
Burlington, ON L7L 6W6

or

please fax to (905) 335-5731

NextEra Energy Canada Public Information Centre Survey

Personal Information (optional)

Name:

Address:

Phone:

Email:

1. How did you hear about the Public Information Centre (PIC)? (circle all that apply)

- ☒ a) Invitation sent by NextEra Energy Canada?
- ☐ b) Newspaper
- ☐ c) Friend or family member
- ☐ d) Other, please specify: _____

2. What questions or concerns did you have about the Conestogo Wind Energy project?

- ① Land/property house values ↓
- ② Look outside of our peaceful farm existence & see a huge structure.
- ③ Health issues
- ④ Noise issues
- ⑤ Talked to people from Goderich area - not happy.

3. Were your questions/concerns answered to your satisfaction? If no, please explain.

Alex was a great resource - gave me website for house values. Info

4. What remaining questions or concerns do you have about this project?

Some concerns.

5. In your opinion, do you think this project will be beneficial to your community?
If yes, what do you think the benefits of this project will be? If no, why not?

*It might be beneficial to our community
but at new cost."*

6. What did you learn about NextEra Energy Canada or the Conestogo Wind Energy project?

*Information was great - but I'm
not convinced it's for us.*



7. How would you prefer to receive further information about the project(s)? Circle all that apply:
- a) by phone
 - b) by mail
 - c) in person
 - d) at another open house event
 - ☒ e) by email
 - f) by the local newspaper, please specify the paper: _____
 - g) I don't want to receive further information about this project

If you would prefer to mail or fax your completed survey, please send to:
NextEra Energy Canada
Att: Thomas Bird
5500 North Service Road, Suite 205
Burlington, ON L7L 6W6

or

please fax to (905) 335-5731



NextEra Energy Canada Public Information Centre Survey

Personal Information (optional)

Name:

Laurie Gillis

Address:

R.R. 4, Flesherton Ont N0C 1E0

Phone:

519-922-3072

Email:

1. How did you hear about the Public Information Centre (PIC)? (circle all that apply)

a) Invitation sent by NextEra Energy Canada?

b) Newspaper

☒ c) Friend or family member

d) Other, please specify: _____

2. What questions or concerns did you have about the Conestogo Wind Energy project?

No one would put, in writing, that the wind turbines will NEVER exceed 40 dba at point of reception.

3. Were your questions/concerns answered to your satisfaction? If no, please explain.

No see above

4. What remaining questions or concerns do you have about this project?

Will you guarantee in writing
that you will pay market
value for home if people get sick?

5. In your opinion, do you think this project will be beneficial to your community?
If yes, what do you think the benefits of this project will be? If no, why not?

No.

6. What did you learn about NextEra Energy Canada or the Conestogo Wind Energy project?

That this company is the same
as any other.



7. How would you prefer to receive further information about the project(s)? Circle all that apply:
- a) by phone
 - ☒ b) by mail
 - c) in person
 - d) at another open house event
 - e) by email
 - f) by the local newspaper, please specify the paper: _____
 - g) I don't want to receive further information about this project

If you would prefer to mail or fax your completed survey, please send to:
NextEra Energy Canada
Att: Thomas Bird
5500 North Service Road, Suite 205
Burlington, ON L7L 6W6

or

please fax to (905) 335-5731



NextEra Energy Canada Public Information Centre Survey

Personal Information (optional)

Name:

GLENN FRANKLIN

Address:

RR#1 ALMA NOB 1A0

Phone:

Email:

1. How did you hear about the Public Information Centre (PIC)? (circle all that apply)

a) Invitation sent by NextEra Energy Canada?

☒ b) Newspaper

c) Friend or family member

d) Other, please specify: _____

2. What questions or concerns did you have about the Conestogo Wind Energy project?

- CONSIDERATION OF HEAVY CLAY (PERTH LOAM) FROM SURFACE DOWN TO HARD PAN (100 FEET DEPTH) TRANSMITTING SOUND. HEAVY WET CLAY CAN ACT SAME AS WATER FOR SOUND TRANSMISSION (EASY TRANSMISSION). ASKED IF ANY NOISE ABATEMENT WAS DONE TO INSULATE SIDE OF BASE OF TOWER (CONCRETE FROM SOIL). ASKED IF ANYTHING WAS DONE TO CHANGE BOTTOM OF CONCRETE FROM ACTING AS A DRUM. CHANGE SHAPE SIMILAR TO

3. Were your questions/concerns answered to your satisfaction? If no, please explain.

QUESTION WAS NOT ANSWERED.

REPRESENTATIVE INDICATED THEY WERE NOT AWARE OF ANY STUDIES INDICATING HEAVY CLAY WOULD TRANSMIT SOUND. INDICATED NORMALLY NO INSULATING MATERIAL PLACED AROUND SIDES OF BASE. INDICATED NO NOISE ABATEMENT THROUGH SHARPING THE BASE'S BOTTOM WAS DONE.

SOUND PROOFING A ROOM.

4. What remaining questions or concerns do you have about this project?

WILL ANYTHING BE DONE TO ELIMINATE THE
POSSIBILITY OF SOUND BEING TRANSMITTED
FROM THE CONCRETE BASE TO THE CLAY SOIL.

5. In your opinion, do you think this project will be beneficial to your community?
If yes, what do you think the benefits of this project will be? If no, why not?

NO REAL BENEFIT. MOST WORK DONE BY
LARGE COMPANIES FROM GREATER TORONTO
AREA. (NO JOBS) LIMITED INCOME FROM
SITES GOES TO A FEW INDIVIDUALS.

6. What did you learn about NextEra Energy Canada or the Conestogo Wind Energy project?



7. How would you prefer to receive further information about the project(s)? Circle all that apply:
- a) by phone
 - b) by mail
 - c) in person
 - ☒ d) at another open house event
 - e) by email
 - f) by the local newspaper, please specify the paper: _____
 - g) I don't want to receive further information about this project

If you would prefer to mail or fax your completed survey, please send to:
NextEra Energy Canada
Att: Thomas Bird
5500 North Service Road, Suite 205
Burlington, ON L7L 6W6

or

please fax to (905) 335-5731

NextEra Energy Canada Public Information Centre Survey

Personal Information (optional)

Name:

Ann Kabbes

Address:

7726 Wellington Rd 12 Arthur ON N0G 1A0

Phone:

(519) 848-3206

Email:

akabbes@hotmail.com

1. How did you hear about the Public Information Centre (PIC)? (circle all that apply)
 - ☒ a) Invitation sent by NextEra Energy Canada?
 - ☐ b) Newspaper
 - ☐ c) Friend or family member
 - ☐ d) Other, please specify: _____
2. What questions or concerns did you have about the Conestogo Wind Energy project?

Wondered how far in the process you were?
Is it a for certain project?
Why are you being so secretive about it?
Why have you changed the boundaries?
What affect does this project have on our ground water? What affect does this project have on stray voltage? If there is a lot of trouble are you prepared to buy us out at current market value?
3. Were your questions/concerns answered to your satisfaction? If no, please explain.

No. Anyone we talked to evaded the questions. They would make great politicians they know really well how to avoid answering any questions directly!





7. How would you prefer to receive further information about the project(s)? Circle all that apply:
- a) by phone
 - ☒ b) by mail
 - c) in person
 - d) at another open house event
 - ☒ e) by email
 - f) by the local newspaper, please specify the paper: _____
 - g) I don't want to receive further information about this project

If you would prefer to mail or fax your completed survey, please send to:
NextEra Energy Canada
Att: Thomas Bird
5500 North Service Road, Suite 205
Burlington, ON L7L 6W6

or

please fax to (905) 335-5731



4. What remaining questions or concerns do you have about this project?

How does it affect our groundwater? With the constant vibrations, what effect does it have on soil compaction? our worm population? the eventual absorption of rain water? Can you guarantee no change in stray voltage? What effect will the sound have on cows & their systems? Can you guarantee our quality of life will NOT change? What about our land values?

5. In your opinion, do you think this project will be beneficial to your community?
If yes, what do you think the benefits of this project will be? If no, why not?

No. It is already dividing the community. There are far too many unknowns to make the project safe and able to benefit the community. The farmers are not being fairly compensated! The hydro produced isn't staying in our community! The company isn't even Canadian!

6. What did you learn about NextEra Energy Canada or the Conestogo Wind Energy project?

NextEra Energy Canada is a subsidiary of Florida Power & Light, which is an American Company. No one from the company lives near any wind farms so have no idea what it is really like!!

**NextEra Energy Canada
Public Information Centre Survey**

Dec 8 / 09

DEC 14 2009

Personal Information (optional)

Name:

FRANK SPOELSTRA

Address:

R.R.1 PALMERSTON ON. N0G 2P0

Phone:

519-343-5626

Email:

1. How did you hear about the Public Information Centre (PIC)? (circle all that apply)

a) Invitation sent by NextEra Energy Canada?

b) Newspaper

c) Friend or family member

d) Other, please specify: _____

2. What questions or concerns did you have about the Conestogo Wind Energy project?

My question did not deal specifically with the Conestogo project but was of a more general nature and concerns the separation distance between wind energy systems and registered aerodromes. Has the provincial government set a distance (K.M. or miles) for this?

While talking to your staff at the meeting in Moorefield, I learned that they were not aware of the existing public airport at Teviotdale.

~~3. Were your questions/concerns answered to your satisfaction? If no, please explain.~~

It is listed in the Canadian Flight Supplement under the name "Palmerston"

When Wellington County revised their official plan to include large wind energy projects (see enclosure 1) the Palmerston airport was left out.

Attempts, over the last 2 years, to have the aerodrome included in the official plan have so far been

4. ~~What remaining questions or concerns do you have about this project?~~
 unsuccessful and to date have not received a reply to my letter of Feb. 2009 (see enclosure 2). I'm concerned that companies such as Nextera, when doing research for suitable wind energy locations will not know where we are located or even that we exist since no mention of Palmerston airport is made in the official plan.

5. ~~In your opinion, do you think this project will be beneficial to your community?~~
~~If yes, what do you think the benefits of this project will be? If no, why not?~~

I am not concerned about the Conestogo project as there is ample distance between it and the airport.

I also realize that the section of the Wellington County official plan dealing with wind generation is probably redundant now since the province has taken over jurisdiction and so the only question I have is:

6. ~~What did you learn about Nextera Energy Canada or the Conestogo Wind Energy project?~~

Under the provincial guide lines for wind energy systems, what is the separation distance between wind turbines and registered and certified airports?

Sincerely,
 T. Spolster

7. How would you prefer to receive further information about the project(s)? Circle all that apply:
- a) by phone
 - ☒ b) by mail
 - ☒ c) in person
 - ☒ d) at another open house event
 - e) by email
 - f) by the local newspaper, please specify the paper: _____
 - g) I don't want to receive further information about this project

If you would prefer to mail or fax your completed survey, please send to:
NextEra Energy Canada
Att: Thomas Bird
5500 North Service Road, Suite 205
Burlington, ON L7L 6W6

or

please fax to (905) 335-5731

I gave Terry an old copy of the Elight Supplement (C.F.S.)
at the Moorefield meeting. I have ordered a new one
and will forward it to your office as soon as
I receive it.
T.S.

1. The first part of the document discusses the importance of maintaining accurate records of all transactions and activities. It emphasizes that this is crucial for ensuring transparency and accountability in the organization's operations.

2. The second part of the document outlines the various methods and tools used to collect and analyze data. It includes a detailed description of the data collection process, from identifying the sources of data to the actual collection and storage of the data.

3. The third part of the document discusses the importance of data security and privacy. It outlines the various measures that should be taken to protect the data from unauthorized access, loss, or theft.

4. The fourth part of the document discusses the importance of data quality and accuracy. It outlines the various methods and tools used to ensure that the data is accurate and reliable.

5. The fifth part of the document discusses the importance of data analysis and interpretation. It outlines the various methods and tools used to analyze the data and extract meaningful insights from it.

6. The sixth part of the document discusses the importance of data visualization. It outlines the various methods and tools used to visualize the data in a way that is easy to understand and interpret.

7. The seventh part of the document discusses the importance of data sharing and collaboration. It outlines the various methods and tools used to share data with other organizations and individuals.

8. The eighth part of the document discusses the importance of data governance. It outlines the various methods and tools used to ensure that the data is managed in a way that is consistent with the organization's policies and procedures.

4.13.1.2.(d) (IX)

vi) a local municipality may require an amendment to the local Zoning By-law to permit a small wind energy system, and may require documentation or studies necessary to demonstrate that location criteria for safety and compatibility will be met, and any other information deemed relevant by Council.

d) Large Wind Energy Systems may be permitted:

- In the Rural System on lands designated Prime Agricultural, Secondary Agricultural, Rural Industrial, or Highway Commercial;
- in the Urban System on lands designated Industrial or Highway Commercial;

subject to the provisions of the Zoning By-law.

Large Wind Energy Systems shall be located in accordance with the following criteria:

- i) well separated from urban centres, hamlets, country residential areas, and lifestyle communities;
- ii) within 1km of an Urban Centre or Hamlet, the applicant will demonstrate that the system would not impede efficient urban expansion;
- iii) well separated from sensitive land uses including residences;
- iv) on large parcels with sufficient on-site setbacks for noise mitigation and safety relative to falling ice, ice throw or tower collapse;

v) where a turbine is shared by two abutting property owners or where abutting lots are under lease with the same wind farm developer, the tower may be located on the property line;

vi) in such a way as to minimize where possible the displacement of prime agricultural land and interference with agricultural operations, including ongoing or future reforestation;

vii) with appropriate setbacks from the Greenlands System;

viii) preferably not within migratory bird migration routes or adjacent to migratory bird habitat;

ix) no closer than 10km from an established aerodrome, registered aerodrome or certified airport unless written approval of Transport Canada and NavCanada is obtained, and at least 4 km from both the centre points of the runways, and the ends of the runways, of the Guelph Airpark or York Soaring Club; *

x) with access to a public road having the capacity to accommodate construction and maintenance vehicles;

xi) consideration may be given to allowing turbine access lanes to be established on unopened road allowances where appropriate, and where agricultural and/or environmental impacts would be reduced;

xii) any turbine within 800m of a provincial highway may require a permit from the Ontario Ministry of Transportation, and the province may restrict access to

County of Wellington
Planning and Development
Gary A. Cousins M.C.I.P. Director

Dear Sir:

As you may be aware by now, I've been concerned about Palmerston airport not being named, along with Guelph and Arthur East, in section 4.13.1.2.(d)(IX) of the Wellington county official plan.

When I found out about it last August, it looked like an oversight which is understandable because our airport is tucked away about a half km off highway 109 and 123 at Teviotdale. Also people who are not into aviation generally don't know where the airports are.

Since last August I've talked to many people about this matter and was surprised to find that nearly all the people who know about the airport, believe it is a private strip like many others in Ontario.

I started flying at this property in 1965 using what was then a private strip 1500' x 75'. This all changed in 1981 when we were approached by some neighbours who were promoting this area as a good site for the upcoming 1984 International Plowing Match. The idea was that anyone coming to the I.P.M. by plane could land at our airstrip.

We were delighted at being asked to be part of it but I felt that the 1500' runway was too short for a lot of pilots. I also knew that many pilots rent an airplane to go flying and they are not allowed to land at unlicensed airports.

So the idea became; a longer and licensed runway.

Transport Canada inspection department was very helpful with the initial layout and planning. A local contractor was hired to do the earth moving, grading etc. We did the tillage, stone picking and seeding. It required ½ ton of parkland grass seed.

After a final inspection by T.C., The runway was licensed in the public, day, V.F.R. Category. Total traffic during the 1984 I.P.M. was 178 aircraft.

Sometime during the late 1980s, I added a short 1600'x50'crosswind runway. This was suitable for my type of plane but marginal for the faster planes and so in 2000 I started thinking about extending it to make it safer for visiting aircraft.

Before any work could start I had to look into the closing and purchasing of the unopened road allowance between lot 110, conc. D and parts of lots 7,8,9 conc. 2 in Minto as the extension of runway 27-09 would go through that property.

Extensive earth moving and leveling needed to be done and that work, including the final seeding was done in 2002 by local contractors. I also contracted Hydro One to put 2 spans of the primary hydro line underground to make a clear and safe approach to runway 27.

Total cost of the work was in the \$20,000. range. The only work remaining is the final placement of the runway markers along the north side of the runway.

To summarize; there are many private airstrips in Ontario. Among the many there are a few that grow into another stage. The difference, I believe is that among pilots there are a few who not only love to fly but they have a greater interest in aviation. An example would be the late Len Arriss who built Guelph airport and the late Bruce Dale who built, what is now, Stratford Municipal Airport.

In conclusion, I would like to draw your attention to the fact that T.C. does not have jurisdiction over land-use outside the registered airport property and therefore cannot protect us from towers (Wind turbines or communication) that may adversely affect the safety of a registered aerodrome. I respectfully ask that section 4.13.1.2 (d) (IX) of the Wellington county official plan be amended to include Palmerston airport.

Sincerely:

Frank Spoelstra

North Wellington Aviation Services Inc.

Attachment:

Correspondence from Transport Canada to Frank Spoelstra



NextEra Energy Canada Public Information Centre Survey

Personal Information (optional)

Name:

JOHN KRUL

Address:

~~1111~~ 7662 16th line RR#4 ARTHUR ONT

Phone:

519-848-2427

Email:

1. How did you hear about the Public Information Centre (PIC)? (circle all that apply)

- ☒ a) Invitation sent by NextEra Energy Canada?
- ☒ b) Newspaper
- c) Friend or family member
- d) Other, please specify: _____

2. What questions or concerns did you have about the ~~East Dutton~~ ^{CONESROGO} Wind Energy project?

with growing health concerns why do we need these in a prime agriculture densely populated area. Residents ^{or in} near these projects that are being affected all seem to have the same symptoms from noise or electrical hypersensitivity. They can't all be lying!! As we are on a dairy farm a concern is stray voltage. The other concern I have is the manner that was used to get contracts signed eg "We have enough landowners signed up to proceed with the project so if you have to look at them why not take advantage of the opportunity" This line was probably used at the very first visit they made!

3. Were your questions/concerns answered to your satisfaction? If no, please explain.

NO. the reps kept saying it won't happen in the project but nobody would guarantee that in writing or in a legal document. If I don't have stray voltage now and I do when the turbines start who will take responsibility for that (the company or the Ont gov't)? Our farm will be stuck in it and it was + my decision!



4. What remaining questions or concerns do you have about this project?

The same as before. We received no answers as to what will happen should we experience similar problems others in these projects have (our health or our animals health). The only guarantee I want is that my son (3rd generation) on it. I am not happy with the guidelines. In my opinion some of these guidelines are not good enough!

5. In your opinion, do you think this project will be beneficial to your community? If yes, what do you think the benefits of this project will be? If no, why not?

Not at all. It has already created hard feelings among neighbours. It will only benefit the company (FP+L). The visual impact it will have on our neighbourhood is another negative (not the biggest concern but none the less an issue). If only a couple people are negatively affected what will that benefit the community?

6. What did you learn about NextEra Energy Canada or the ~~East Branch~~ ^{Conestoga} Wind Energy project?

The sales people use tactics that are almost underhanded to get landowners to sign up. At first we were only getting 6 turbines in this area now its up to 12. The original study area meeting notice on March 7 2007 says that FP+L proposed 6 x 1.5 MW turbines now its up to 12 producing 18 MW or 23.5 MW.

Can we believe

CAN WE BELIEVE ANYTHING THEY ARE TELLING US!

THE ONT. GOV'T SHOULD PUT HEALTH BEFORE TURBINES
AN INDEPENDANT THIRD PART STUDY SHOULD BE DONE BEFORE ANY



MORE OF THESE TURBINES ARE BUILT !

7. How would you prefer to receive further information about the project(s)?

Circle all that apply:

- a) by phone
- ☒ b) by mail
- c) in person
- d) at another open house event
- e) by email
- f) by the local newspaper, please specify the paper: _____
- g) I don't want to receive further information about this project

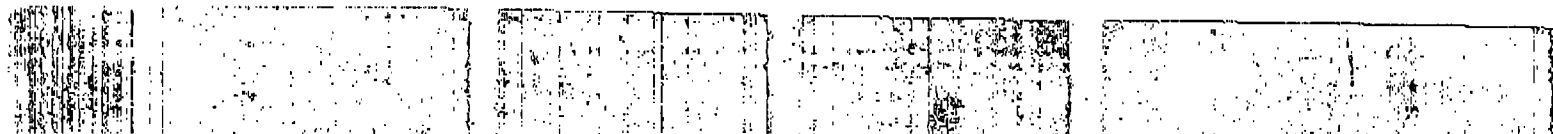
If you would prefer to mail or fax your completed survey, please send to:
NextEra Energy Canada
Att: Thomas Bird
5500 North Service Road, Suite 205
Burlington, ON L7L 6W6

or

please fax to (905) 335-5731

P.S

THE ONLY OTHER CONCERN WE HAVE IS
THE EFFECT THE HUGE HOLES FULL OF CONCRETE
WILL HAVE ON THE AQUIFER IN THIS AREA
THE TOWN OF NOTHUR DRAWS ITS WATER FROM
UNDER THIS AREA WILL THAT BE AFFECTED?





NextEra Energy Canada Public Information Centre Survey

Personal Information (optional)

Name:

Diana Krul

Address:

7662 16th line, Mapleton Twp

Phone:

(519) 848-2427

Email:

1. How did you hear about the Public Information Centre (PIC)? (circle all that apply)

- ☒ a) Invitation sent by NextEra Energy Canada?
- ☐ b) Newspaper
- ☐ c) Friend or family member
- ☐ d) Other, please specify: _____

2. What questions or concerns did you have about the Conestogo Wind Energy project?

- 1) Health concerns → will my family suffer any health effects?
- 2) Will stray voltage be a problem & what will NextEra energy do if there is?
- 3) What will happen if these turbines have a negative effect on wildlife, birds, bats & even worms etc?
- 4) Why would NextEra target an intense agriculture area with a number of residents?
- 5) Why is it that you chose not to believe any of the people that are suffering from health issues related to the turbines?

3. Were your questions/concerns answered to your satisfaction? If no, please explain.

NOT AT ALL

NextEra claims that there are no health risks or stray voltage issues yet will not guarantee that claim.

Thy outright told me that, that would be our problem, they would take no responsibility. What kind of company has absolutely no regard for the residents of a wind farm area?

Most questions were answered in a round about fashion & not answered directly, which was very frustrating.



4. What remaining questions or concerns do you have about this project?

If 90% of the residents within the study area were against the project, why would go ahead with it?

Can you as a company guarantee that the future generations will be able to farm here with no effect? If you won't guarantee that why put us at risk? Even if we only believe 20% of what's on the internet there's reason for concern.

What will happen to the aquifer beneath the ground here that supplies us, as well as the town of Arthur with water?

5. In your opinion, do you think this project will be beneficial to your community?
If yes, what do you think the benefits of this project will be? If no, why not?

Not all! This project already has a negative effect on the community and even families by splitting us apart. How can 8 or so people who signed up, say what goes on in a community. Has anyone from your ever bothered to count the number of residents in the area?

This is a highly productive agriculture area with a number of productive livestock operations (in our case dairy). What will the community be without them

6. What did you learn about NextEra Energy Canada or the ^{Conestoga} ~~Conestoga~~ Wind Energy project?

I learned that the vast majority of people are against this project.

I learned that NextEra Energy & it's employees are rather insensitive to the residents of the area & are very good at directly answering question. I also learned that you cannot totally believe what they say because they have outright lied, so which leads me to wonder what else they would be lying about.



7. How would you prefer to receive further information about the project(s)?

Circle all that apply:

- a) by phone
- ☒ b) by mail
- c) in person
- d) at another open house event
- e) by email
- f) by the local newspaper, please specify the paper: _____
- g) I don't want to receive further information about this project

If you would prefer to mail or fax your completed survey, please send to:

NextEra Energy Canada

Att: Thomas Bird

5500 North Service Road, Suite 205

Burlington, ON L7L 6W6

or

please fax to (905) 335-5731

I hope you carefully consider all of these questions. If you cared at all of the community and it's residents, studies would be made by independent, third party companies. There are number of people who do suffer ill effects as a result of the turbines, let's not have any more and put health first.



Conestogo Wind Energy Centre Project

Public Information Centre #1

December 2, 2009

SIGN-IN SHEET

Please Print Clearly

NAME	ADDRESS	POSTAL CODE	PHONE #	ADD TO MAILING LIST	
MARCO TOSHI	1241 KENNEDY RD	N2G 2S0	519-848-2899	YES <input type="checkbox"/>	NO <input checked="" type="checkbox"/>
PER ASKEW	TR 1 ARTHUR DR	N0G 1A0	519-848-2084	YES <input type="checkbox"/>	NO <input type="checkbox"/>
RA ALENA	RR#1 ALMA	N0D 1A0	519 638 5511	YES <input type="checkbox"/>	NO <input checked="" type="checkbox"/>
Emma Dixon	RR#1 Alma	N0B 1A0	519-638-5541	YES <input checked="" type="checkbox"/>	NO <input type="checkbox"/>
JOHN & Norma BEGG	RR1 ARTHUR	N0G 1A0	519-848-3067	YES <input checked="" type="checkbox"/>	NO <input type="checkbox"/>
RA WILSON	R1 ALMA	N0B 1A0	519-638-2702	YES <input checked="" type="checkbox"/>	NO <input type="checkbox"/>
EDGAR WEBER	RR4 Arthur	N0G 1A0	519 848 2057	YES <input checked="" type="checkbox"/>	NO <input type="checkbox"/>
JOHN	RR Arnpark	N4W 2Y8	519-278-186	YES <input type="checkbox"/>	NO <input checked="" type="checkbox"/>
HANS TOSCH	RR1 ARTHUR	N0P N0	519 044 8593	YES <input checked="" type="checkbox"/>	NO <input type="checkbox"/>
Yusuf & Joyce Kelly	R.R. 4 Arthur	N0G 1A0	519) 848-3368	YES <input checked="" type="checkbox"/>	NO <input type="checkbox"/>
Carl Hammond	RR Elora	N0G 1A0	519 846 0982	YES <input checked="" type="checkbox"/>	NO <input type="checkbox"/>
				YES <input type="checkbox"/>	NO <input type="checkbox"/>

SIGN-IN SHEET

Please Print Clearly

NAME	ADDRESS	POSTAL CODE	PHONE #	ADD TO MAILING LIST	
Jim Baker	Twp of Mapleton		638-3313	YES <input checked="" type="checkbox"/>	NO <input type="checkbox"/>
John Holler	Poe!		844-2716	YES <input type="checkbox"/>	NO <input type="checkbox"/>
Michelle Cuomo	Mapleton		638-5268	YES <input type="checkbox"/>	NO <input type="checkbox"/>
OSR Rogers	51 Side Road Amiss		519-766 3162	YES <input checked="" type="checkbox"/>	NO <input type="checkbox"/>
Rick Richardson	Twp Of Mapleton		574-8387	YES <input checked="" type="checkbox"/>	NO <input type="checkbox"/>
LYNNE MATUSINEC	WELINGTON NORTH		519-848-3409	YES <input checked="" type="checkbox"/>	NO <input type="checkbox"/>
Dean Toney	Wellington Park		519-848-2715	YES <input type="checkbox"/>	NO <input type="checkbox"/>
DAVE BRAY	MAPLETON			YES <input type="checkbox"/>	NO <input type="checkbox"/>
Chris Papandre	Wellington Advertiser		579-843-5416	YES <input type="checkbox"/>	NO <input checked="" type="checkbox"/>
Bill's Ann Kabas	Arthur	N0G 1A0	(519) 848-3206	YES <input type="checkbox"/>	NO <input checked="" type="checkbox"/>
Doug & Hil Lamond	Arthur	N0G 1A0	(519) 848-5505	YES <input checked="" type="checkbox"/>	NO <input type="checkbox"/>
John Krul	Arthur		519 848-2427	YES <input checked="" type="checkbox"/>	NO <input type="checkbox"/>

SIGN-IN SHEET

Please Print Clearly

NAME	ADDRESS	POSTAL CODE	PHONE #	ADD TO MAILING LIST	
Jonathan Shinkel	297 Bamford Dr. Listowel	N4W 3V2	519-291-5286	YES <input type="checkbox"/>	NO <input checked="" type="checkbox"/>
DANNA WEAVER	7624 WELINGTON RD	N0G 1A0	519-848-2518	YES <input checked="" type="checkbox"/>	NO <input type="checkbox"/>
NELSHA LAWRENCE	7722 SLOPE RD 18 16th Line	N0G-1M0	848-6687	YES <input checked="" type="checkbox"/>	NO <input type="checkbox"/>
Jeff Kroll	7672 RR #4 Arthur	N0G 1A0	519 848 5589	YES <input checked="" type="checkbox"/>	NO <input type="checkbox"/>
Lambert Henry	7904 RR 4 Albany	N6B 1A0	848-5810	YES <input type="checkbox"/>	NO <input type="checkbox"/>
B. Tosh	RR 4 Kenilworth	N0G 2E0	848-2899	YES <input type="checkbox"/>	NO <input checked="" type="checkbox"/>
Sharon O'Sullivan	RR 1 Arthur ON	N0G 1A0	848-2084	YES <input checked="" type="checkbox"/>	NO <input type="checkbox"/>
David Black	RR 4 Arthur	N0G 1A0	848-5329	YES <input checked="" type="checkbox"/>	NO <input type="checkbox"/>
Paul Fair	R.R. #4 Arthur	N0G 1A0	848-2936	YES <input type="checkbox"/>	NO <input checked="" type="checkbox"/>
Tom Kelly	RR #1 Arthur	N0G 1A0	848-5670	YES <input type="checkbox"/>	NO <input checked="" type="checkbox"/>
Georgie Teal McLaughlin	RR 1 ARTHUR	N0G 1A0	848-6188	YES <input checked="" type="checkbox"/>	NO <input type="checkbox"/>
Carl Tickner	RR #1 Arthur	N0G 1A0	848-2557	YES <input type="checkbox"/>	NO <input checked="" type="checkbox"/>



Conestogo Wind Energy Centre Project

Public Information Centre #1

December 2, 2009

SIGN-IN SHEET

Please Print Clearly

[illegible]

SIGN-IN SHEET

Please Print Clearly

NAME	ADDRESS	POSTAL CODE	PHONE #	ADD TO MAILING LIST	
HEAT, PERRY.	7990 WELLSINGTON RD. APTNR	N0G 1A0	519-710-0847	YES <input checked="" type="checkbox"/>	NO <input type="checkbox"/>
Alexa Wendy Smith	7826 Mapleton 18, Rte. S.R. Arthur	N0G 1A0	519-848-3563	YES <input checked="" type="checkbox"/>	NO <input type="checkbox"/>
JAMES TAYLOR	18 Tipperary R, Guelph	N1H 2A3	519-763-7145	YES <input checked="" type="checkbox"/>	NO <input type="checkbox"/>
Kornie Gillis	Flesterdon (PO Box 21)		519 922-3072	YES <input type="checkbox"/>	NO <input type="checkbox"/>
GRAD GRANT	DRAYTON (PO Box 21)	N0G 1P0	519 638 0214	YES <input checked="" type="checkbox"/>	NO <input type="checkbox"/>
DENNIS CRUEN	MOOREFIELD	N0G 2H0	519 638 2871	YES <input checked="" type="checkbox"/>	NO <input type="checkbox"/>
Frank Amurrah	7810 14TH LINE RR 4 ARTHUR	N0G 1A0	519 848 5400	YES <input checked="" type="checkbox"/>	NO <input type="checkbox"/>
CHAND FERRARO	381 ALMA	N0G 1A0		YES <input type="checkbox"/>	NO <input checked="" type="checkbox"/>
BARRY GOURLEY	38 MCGIVERN ST	N0G 2K0	519-638-3013	YES <input checked="" type="checkbox"/>	NO <input type="checkbox"/>
				YES <input type="checkbox"/>	NO <input type="checkbox"/>
				YES <input type="checkbox"/>	NO <input type="checkbox"/>
				YES <input type="checkbox"/>	NO <input type="checkbox"/>

SIGN-IN SHEET

Please Print Clearly

NAME	ADDRESS	POSTAL CODE	PHONE #	ADD TO MAILING LIST	
Tim Sue D'Donnell	R.R.#1, Arthur Ont.	N0G1A0	519-848-3008	YES <input checked="" type="checkbox"/>	NO <input type="checkbox"/>
FRANK SpadSTRA	R.R.1 PALMERSTON	N0G2P0	519-343-5626	YES <input checked="" type="checkbox"/>	NO <input type="checkbox"/>
ALFRED Pilon	R.R.1 Arthur	N0G1A0	" 748 5575	YES <input checked="" type="checkbox"/>	NO <input type="checkbox"/>
Randy Burns	R4 Arthur	N0G1A0	519 835-2368	YES <input checked="" type="checkbox"/>	NO <input type="checkbox"/>
TEARER HESSERIS	Alma	N0G-150	519-846-5153	YES <input type="checkbox"/>	NO <input type="checkbox"/>
Jason Hessler	Alma	"	"	YES <input type="checkbox"/>	NO <input type="checkbox"/>
Karen Idzik	R.R.#4 Kenilworth	N0G2E0	519-848-5360	YES <input type="checkbox"/>	NO <input type="checkbox"/>
Jim BEER	R.R.4 ARTHUR	N0G1A0	519-848-3488	YES <input checked="" type="checkbox"/>	NO <input type="checkbox"/>
Wayne Gerdich	R.R.#1 Arthur	N0G1A0	519-848-5709	YES <input checked="" type="checkbox"/>	NO <input type="checkbox"/>
Bert Coffey	R.R.#1 Arthur	N0G1A0	519-848-5363	YES <input checked="" type="checkbox"/>	NO <input type="checkbox"/>
				YES <input type="checkbox"/>	NO <input type="checkbox"/>
				YES <input type="checkbox"/>	NO <input type="checkbox"/>