



AUDITOR'S REPORT

To the Policyholders of
Peel Maryborough Mutual Insurance Company

We have audited the financial position of Peel Maryborough Mutual Insurance Company as at December 31, 2006 and the statements of income and policyholders' equity and cash flows for the year then ended. These financial statements are the responsibility of the company's management. Our responsibility is to express an opinion on these financial statements based on our audit.

We conducted our audit in accordance with Canadian generally accepted auditing standards. Those standards require that we plan and perform an audit to obtain reasonable assurance whether the financial statements are free of material misstatement. An audit includes examining, on a test basis, evidence supporting the amounts and disclosures in the financial statements. An audit also includes assessing the accounting principles used and significant estimates made by management, as well as evaluating the overall financial statement presentation.

In our opinion, these financial statements present fairly, in all material respects, the financial position of the company as at December 31, 2006 and the results of its operations and its cash flows for the year then ended in accordance with Canadian generally accepted accounting principles.

Comparative figures were reported on by other chartered accountants under date of January 19, 2006.

Cambridge, Ontario
January 17, 2007

Graham Mathew & Partners LLP
LICENSED PUBLIC ACCOUNTANTS

FINANCIAL POSITION
DECEMBER 31, 2006

Peel Maryborough Mutual Insurance Company	2006	2005
ASSETS		
Cash and investments	19,540,167	18,068,320
Amounts receivable	10,158,624	8,148,094
Deferred policy acquisition expenses	1,077,704	1,015,994
Future income taxes	157,500	114,000
Capital assets	507,322	543,067
	31,441,317	27,889,475

LIABILITIES

Provision for unpaid claims	11,267,372	8,884,980
Unearned premiums	6,117,208	5,853,485
Accounts payable and accrued liabilities	414,292	506,654
Income taxes payable	56,504	78,299
Payable to Facility Association	560,736	346,785
	18,216,112	15,670,203

POLICYHOLDERS' EQUITY

Policyholders' equity	13,225,205	12,919,272
	31,441,317	27,889,475

STATEMENT OF INCOME AND POLICYHOLDER'S EQUITY
YEAR ENDED DECEMBER 31, 2006

	2006	2005
\$		
Gross premiums written	12,552,934	12,057,815
Deduct		
Reinsurance premiums	2,402,306	2,934,134
Increase in reserve for unearned premiums	260,565	124,464
	2,662,871	3,058,598
Net premiums earned	9,890,628	8,999,217
Service charge revenue	69,312	60,417
Net underwriting revenue	9,869,377	9,059,634
Claims and expenses		
Net claims incurred	5,927,655	5,377,923
Commissions	2,386,177	2,200,056
Salaries and fees	828,446	727,219
General	650,869	522,933
	9,793,147	8,828,131
Underwriting income	76,230	231,503
Other revenue (expense)		
Investment income	1,124,507	979,720
Income taxes	(194,804)	(132,716)
Net income for year	929,703	847,004
	1,005,933	1,078,507
Policyholders' equity, beginning of year	12,219,272	11,140,765
Policyholders' equity, end of year	13,225,205	12,219,272

A complete set of financial statements is available at the Company head office,
103 WELLINGTON STREET, DRAYTON, ONTARIO
or on the Company website at: www.pmmutual.on.ca

Stay connected to what's happening in your community by reading

The Wellington Advertiser



NOTICE OF
ANNUAL MEETING

The 119th Annual Meeting of the Policyholders will be held in the office of the Company located at 103 Wellington Street South, Drayton, Ontario, on Friday, March 16, 2007 at 1:30 p.m.

PURPOSE:

1. To receive the Financial Statement for the year ended December 31, 2006.
2. To appoint Auditors for 2007.
3. To elect three Directors for a three-year term. The directors whose terms have expired are: George Mitchell, Bruce Whale and Jan Dadson, all of whom are eligible for re-election. In accordance with Article 21 of the Company By-Laws, any person wishing to seek election or re-election as a Director, must file their intention to stand for election, in writing, with the Secretary of the Corporation by 1:30 p.m. at least 7 days in advance of the Annual Meeting.
4. To transact any other business which may be properly brought before this meeting.

Alan Simpson, CIP
Manager, Secretary-Treasurer



NOTICE OF STUDY COMMENCEMENT AND PUBLIC INFORMATION CENTRE # 1
CONESTOGO WIND FARM PROJECT

The Study

In response to the Ontario Power Authority's (OPA) call for renewable energy under the Standard Offer Contract (SOC) program, Conestogo Wind, ULC a wholly owned subsidiary of FPL Canadian Wind, ULC is proposing wind turbines within the study area annotated in this Notice. The study area encompasses an area that extends south of Arthur as well as east of Arthur along County Road 109. As the project is at an early stage, a broader area, where alternative turbine locations are being considered, will be studied.

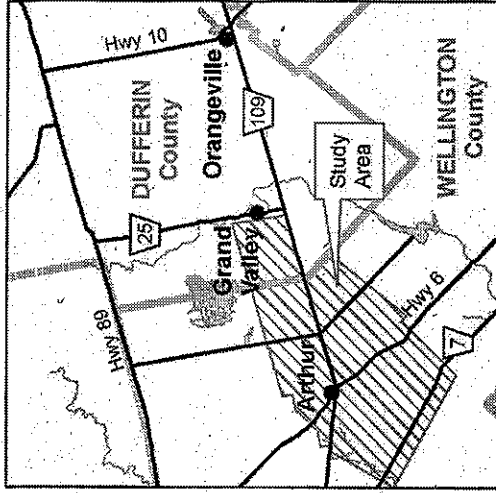
Within this study area, FPL Energy proposes 6 to 10 Standard Offer Contract projects each consisting of 6 x 1.5 MW wind turbines. As the SOC projects are relatively close in geographic proximity, a combined Environmental Screening Report will be prepared for all the SOC projects. The purpose of this Notice is to identify the study area being considered for the wind projects and to invite your participation in the Public Information Centre (PIC) and the dialogue process.

The Company

FPL Energy is a global leader in wind energy generation with the current ownership and operating responsibilities of over 6,500 wind turbines across North America. Our parent company, FPL Group, is one of the leading energy-services organizations in the world with a commendable track record on sustainable business practices.

The Process

The environmental assessment project is being conducted in accordance with the requirements of both the Ontario Environmental Assessment Act (EAA) and the Canadian Environmental Assessment Act (CEAA) and are subject to the environmental screening process for electricity (specifically wind farm) projects. The applicable guidelines that are being followed are the "Guide to Environmental Assessment Requirements for Electricity Projects (March 2001)" provided by the Ontario Ministry of the Environment and the "Environmental Impact Statement Guidelines for Screenings of Inland Wind Farms under the CEAA". The provincial and federal EA processes include public and review agency consultation, evaluation of alternatives, assessment of the impacts of the proposed project, and identification of measures to mitigate any adverse impacts. Upon completion of the study, an Environmental Screening Report will be filed on public record.



The first PIC will be held to publicly present FPL Energy to all stakeholders and to provide educational information on wind power, the environmental assessment project and the next steps that will be followed in the development process. We invite the public to attend the PIC and meet the project team so that we can answer your questions.

Public Information Centre #1

Date: Wednesday March 7, 2007
Time: 4 pm to 8 pm
Location: Arthur Community Centre,
158 Donville Street

Comments

Communications is critical to the process. At FPL Energy, we work hard to communicate fully and freely with our stakeholders from the development process and throughout the construction and long term operations. We want to be the first and best source of information about the projects. We hope that you will want to learn more about this project and will contact one of the project team members to be added to our mailing list. We are interested in hearing comments and answering questions you may have about these proposed projects. It is important to note that, with the exception of personal information, all comments will become part of the public record for the Environmental Screening Report.

Please contact either one of the following team members if you have any questions or comments or wish to obtain more information on the project.

Mr. Michael DeBock
Project Manager
FPLE Canadian Wind, ULC
5500 North Service Road, 8th Floor
Burlington, Ontario
L7L 6W6
Phone: 905-335-4904 x222
Fax: 905-475-5994
Email: Michael_DeBock@tpl.com
Web-site: www.FPLEnergy.com

Mr. Sunil Kumar, P.Eng.
Project Manager
GENIVAR Ontario Inc.
600 Cochrane Drive, Suite 500
Markham, Ontario L3R 5K3
Phone: 905-475-7270 Ext. 253
Fax: 905-475-5994
Email: sunil.kumar@genivar.com

Wild turkeys thriving on Niagara Escarpment here

By Wes Keller

Those magnificent birds you'll see swooping over the escarpment or foraging in the fields of Dufferin County were not here a quarter-century ago, but they were here in abundance a century ago when it was their home.

We're talking "turkey." Earlier generations apparently killed them all off in this part of North America. Present generations, represented internationally by National Wild Turkey Federation (NWNF) and locally by High County Struttin' Toms, along with Anglers and Hunters and the Ontario ministry of Natural Resources have brought them back to life.

"In 1983, there were no wild turkeys (in Dufferin)," says Struttin' Toms president Jim Tanner of Amaranth. "They were pretty well wiped out in Canada."

Then, in 1984, '85 and '86, 274 of the birds were imported from Michigan. Today, there are an estimate

ed 100,000 in Ontario's Mixedwood Plain region.

The Mixed-wood Plain is the smallest of six ecozones in Canada. It includes the southern Ontario area bounded by Lakes Ontario, Erie and Huron, from the Quebec border to Windsor, as well as a second small sector along the St. Lawrence River in Quebec.

The rise of 100,000 or more turkeys in 20 years from an initial release of 274 might seem like quite a population explosion, but it didn't just happen without the continuing help of the groups and agencies that had restored the birds to their once-native habitat in the first place.

The first hunting season for turkeys in Ontario was in 1987 when, according to Jim, only 64 birds were harvested. That number rose to 10,341 in 2006. Apparently not every hunter bagged a bird: Jim said there had been 36,000 licenses issued in that year, at \$22.50 a crack.

Mr. Tanner and his vice-

president, Brent Stannard of Orangeville, say the open season on turkeys is stringently controlled, and no hunter may take more than two birds — both adult males.

Hunters require specialized training, and attendance at a seminar is mandatory for anyone wishing to hunt wild turkeys in Ontario for the first time. The nearest seminars are in Toronto, Barrie, Owen Sound and Waterloo. Registrations are \$35. Information is available at www.ofah.org/huntingresources/index.cfm

Female turkeys, or hens, are protected under the law. Only adult males, or toms, may be harvested. Toms are generally distinguished by their long beards, but Brent says one in 100 females also have a beard.

The turkeys are thriving in spite of mankind's encroachment on their natural habitat, and their night-time vulnerability to predators.

See Population page 4

Minister announced renewal incentives

From page 2

Early in 2007, federal Energy Minister John Baird announced renewal of incentives aimed at expediting development of Canadian wind energy. (That program pays an incentive of one cent per kilowatt hour for 10 years for new projects. By comparison, the federal program in the U.S. pays 1.9 cents.)

Meantime, CHD's 132-MW wind-energy project in Melancton and Amaranth had been scheduled for completion in 2006. Now, with

Ontario Municipal Board hearing scheduled to run into October 2007, chances are completion of the project will be delayed until at least 2009.

Because of the unusual situation of that project spanning two municipalities, construction would not begin in either one until both have approved.

Outside the OMB hearing at Amaranth, CHD Ontario Project Manager Geoff Carnegie said when asked whether Melancton construction could begin with-

out approval in Amaranth: "Regarding the completion of the approvals for the Melancton II Wind Project, we intend to build all elements of the project, as in the documentation, in both Amaranth and Melancton townships."

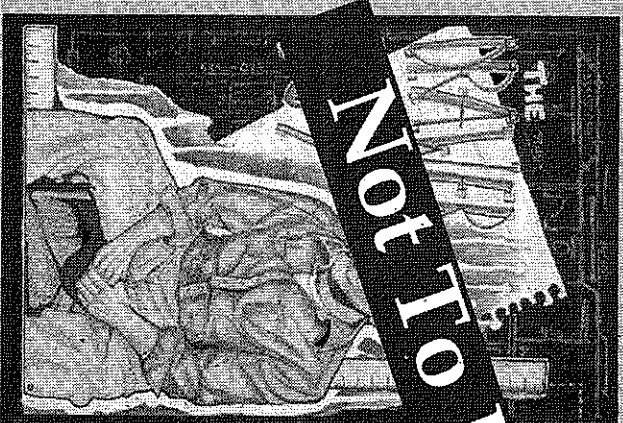
"At this time, we are working our way through approvals processes for Melancton II, and it would not be appropriate for us to speculate on any other regulatory alternatives as we work through these processes."

Theatre Orangeville

David Nairn - Artistic Director

The Drawer Boy

By Michael Healey



starring:

Jefferson Mappin

Booth Savage

and Jeff Giles

Directed by David Nairn

"Wonderfully understated. Funny and deeply affecting" - Toronto Sun (Five stars)

February 15 - March 4

519-942-3423

Orangeville

www.theatreorangeville.ca



Snow Falling on Cedars passes muster

By Lavinia Kerr

The novel, *Snow Falling on Cedars*, written by David Guterson, is being returned to school library shelves at the Dufferin-Peel Catholic District School Board, after it was pulled earlier this month because of a complaint about its content.

The Board received a parental complaint from a student in Grade 11 when the book was assigned in an English class. At issue with the novel is several passages that contain a description of a marital sexual encounter

and sex between two youths.

The committee that was formed to consider the complaint on February 5 issued its finding in a report and said "the committee concluded that the novel, when presented in concert with Catholic moral teaching, offers senior students the opportunity to apply faith and reason in order to explore deep truths about the meaning of life."

The committee stated that parents are "critical partners" in student success. Parents of students in the

Grade 11 English class using *Snow Falling on Cedars* in its syllabus will receive a letter "explaining the value of the novel and saying it contains sensitive material. Parents and students who object will be offered an alternative reading choice. Teachers will receive supplementary resources to support the presentation of the novel through the lens of Catholic moral teachings."

All copies of the novel were returned without restrictions.



FPL Energy

NOTICE OF STUDY COMMENCEMENT AND PUBLIC INFORMATION CENTRE #1

CONESTOGO WIND FARM PROJECT

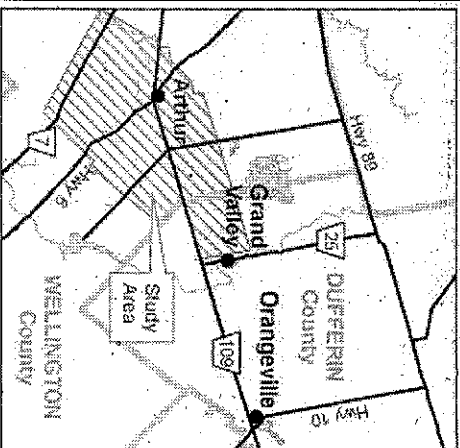
The Study

In response to the Ontario Power Authority's (OPA) call for renewable energy under the Standard Offer Contract (SOC) program, Conestogo Wind, ULC a wholly owned subsidiary of FPLE Canadian Wind, ULC is proposing wind turbines within the study area annunciated in this Notice. The study area encompasses an area that extends south of Arthur as well as east of Arthur along County Road 109. As the project is at an early stage, a broader area, where alternative turbine locations are being considered, will be studied.

Within this study area, FPL Energy proposes 6 to 10 Standard Offer Contract projects each consisting of 6 x 1.5 MW wind turbines. As the SOC projects are relatively close in geographic proximity, a combined Environmental Screening Report will be prepared for all the SOC projects. The purpose of this Notice is to identify the study area being considered for the wind projects and to invite your participation in the Public Information Center (PIC) and the dialogue process.

The Company

FPL Energy is a global leader in wind energy generation with the current ownership and operating responsibilities of over 6,500 wind turbines across North America. Our parent company, FPL Group, is one of the leading energy-services organizations in the world with a commendable track record on sustainable business practices.



The Process

The environmental assessment project is being conducted in accordance with the requirements of both the *Ontario Environmental Assessment Act (EAA)* and the *Canadian Environmental Assessment Act (CEAA)* and are subject to the environmental screening process for electricity (specifically wind farm) projects. The applicable guidelines that are being followed are the "Guide to Environmental Assessment Requirements for Electricity Projects (March 2001)" provided by the Ontario Ministry of the Environment and the "Environmental Impact Statement Guidelines for Screenings of Inland Wind Farms under the CEAA". The provincial and federal EA processes include public and review agency consultation, evaluation of alternatives, assessment of the impacts of the proposed project, and identification of measures to mitigate any adverse impacts. Upon completion of the study, an Environmental Screening Report will be filed on public record.

The first PIC will be held to publicly present FPL Energy to all stakeholders and to provide educational information on wind power, the environmental assessment project and the next steps that will be followed in the development process. We invite the public to attend the PIC and meet the project team so that we can answer your questions.

Public Information Centre #1

Date: Wednesday March 7, 2007
Time: 4 pm to 8 pm
Location: Arthur Community Centre, 158 Dornville Street

Comments

Communications is critical to the process. At FPL Energy, we work hard to communicate fully and freely with our stakeholders from the development process and throughout the construction and long term operations. We want to be the first and best source of information about the projects. We hope that you will want to learn more about this project and will contact one of the project team members to be added to our mailing list. We are interested in hearing comments and answering questions you may have about these proposed projects. It is important to note that, with the exception of personal information, all comments will become part of the public record for the Environmental Screening Report.

Please contact either one of the following team members if you have any questions or comments or wish to obtain more information on the project:

Mr. Michael DeBock

Project Manager

FPLE Canadian Wind, ULC

5500 North Service Road, 8th Floor

Burlington, Ontario L7L 6W6

Phone: 905-335-4904 x222

Fax: 905-475-5894

Email: Michael_DeBock@fpl.com

Web-site: www.FPLEenergy.com

Mr. Sunil Kumar, P.Eng.

Project Manager

GENIVAR Ontario Inc.

600 Cochran Drive, Suite 500

Markham, Ontario L3R 5K3

Phone: 905-475-7270 Ext. 253

Fax: 905-475-5894

Email: sunil.kumar@genivar.com



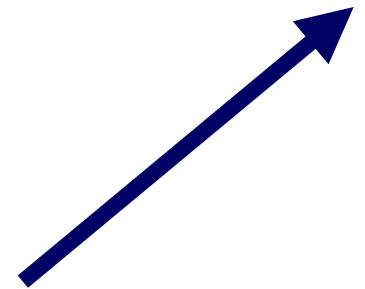
FPL Energy®

We welcome you...

Conestogo Wind

Public Information Centre

March 7, 2007



Please proceed up the stairs

Who we are

- ***A competitive energy supplier***
 - *A presence in 24 states*
- ***A long term owner / operator***
 - *Over 6,500 wind turbines*
- ***A financially strong company***
 - *Fortune 200*
 - *NYSE: FPL*
- ***A safe and reliable operation***
- ***A long term partner within communities***

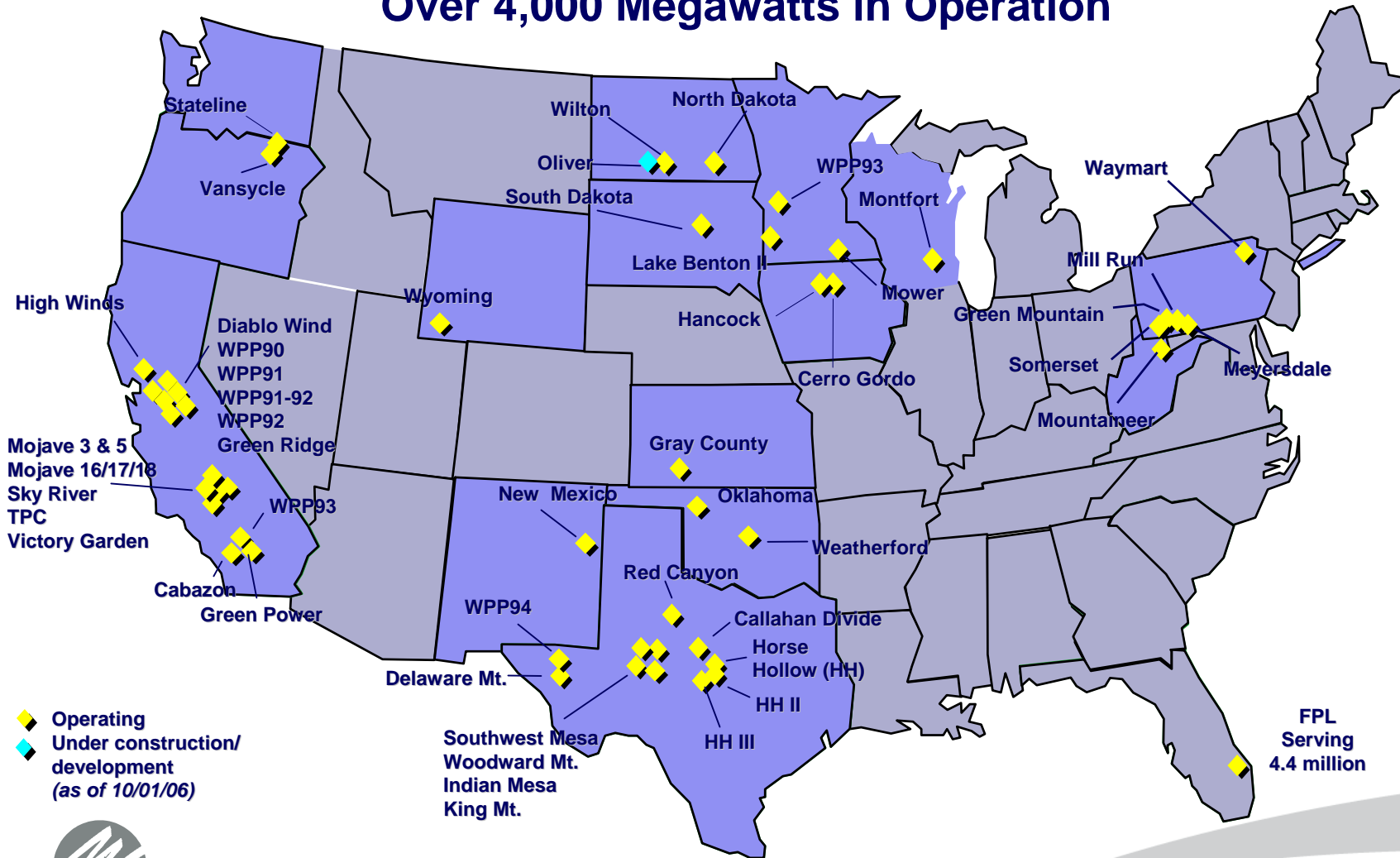


FPL Energy.

www.FPLEnergy.com

Our community experience

Over 4,000 Megawatts in Operation

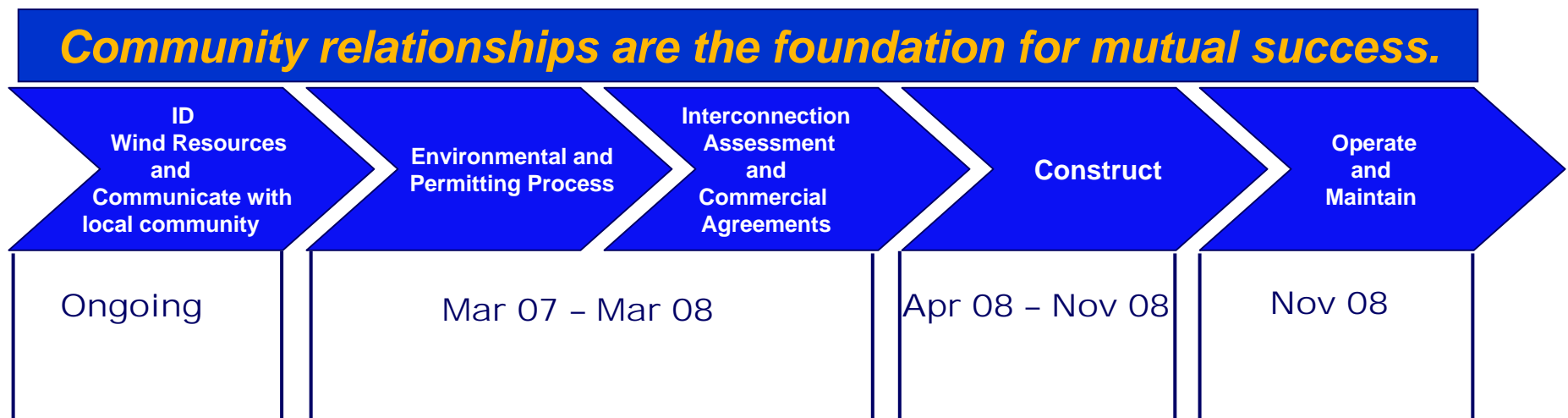


More than 49 Operating Facilities in 15 States



FPL Energy

Our integrated development process



FPL Energy

FPL Group Demonstrates Environmental Leadership



Pioneer Partner
World Wildlife Fund's
PowerSwitch! Program



Global 100
Most Sustainable Corporations in the World



Innovest

Strategic Value Advisors

Four straight #1
EcoValue rankings



Charter partner and 1st utility



FPL Energy

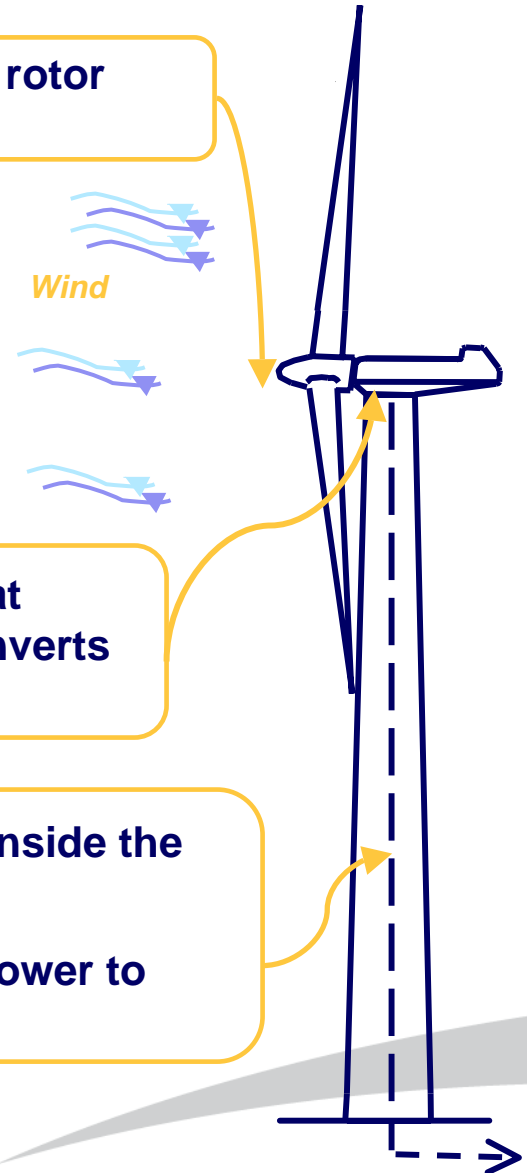
How this technology works

A computer turns the rotor to face the wind.

The blades begin to rotate when winds reach 8 km/h.

Inside the nacelle, the blades drive a shaft that drives a generator through a gearbox and converts the mechanical power to electrical power.

- The electricity is carried down the cables inside the tower.
- Underground distribution lines carry the power to the electrical grid.



GE 1.5 sle Wind Turbine



3 Blades: 77 m diameter

Nacelle with Gearbox
and Generator

Tower: 80 m height to
hub

Foundation



FPL Energy.

Proposed Project

- Conestogo Wind Farm consists of 6 to 10 Standard Offer Contract (SOC) projects
- The study area for the Wind Farm project encompasses an area that extends south of Arthur as well as east of Arthur along County Road 109
- This broader area is being studied where alternative turbine locations may be considered
- Each SOC project entails construction of 6 wind turbines with each turbine having a generating capacity of 1.5 MW
- Total generation capacity of the Wind Farm would be in the range of 54 to 90 MW
- Electrical connections will be to the existing Hydro One grid



Ontario's Energy Policy

- Overall electricity demand will grow and several existing generating resources will need to be retired or refurbished (creates demand-supply gap)
- Planning for replacement of coal-fired generation by cleaner sources
- Ontario Government's goal of 10% of Province's generation to come from renewable sources by 2010
- Studies by Ontario Power Authority have identified that wind could be managed effectively up to 5000 MW capacity (current wind generation capacity in Ontario is less than 1000 MW)



Project Area

- OBM map of project area



FPL Energy®

Project Considerations

- Will help meet Ontario's electricity needs while having no emissions of smog and greenhouse gases
- Requires strong wind resource (which this area has)
- Local economic development
- Agricultural lands can continue to be farmed
- Access to the electrical grid is facilitated via the existing hydro lines

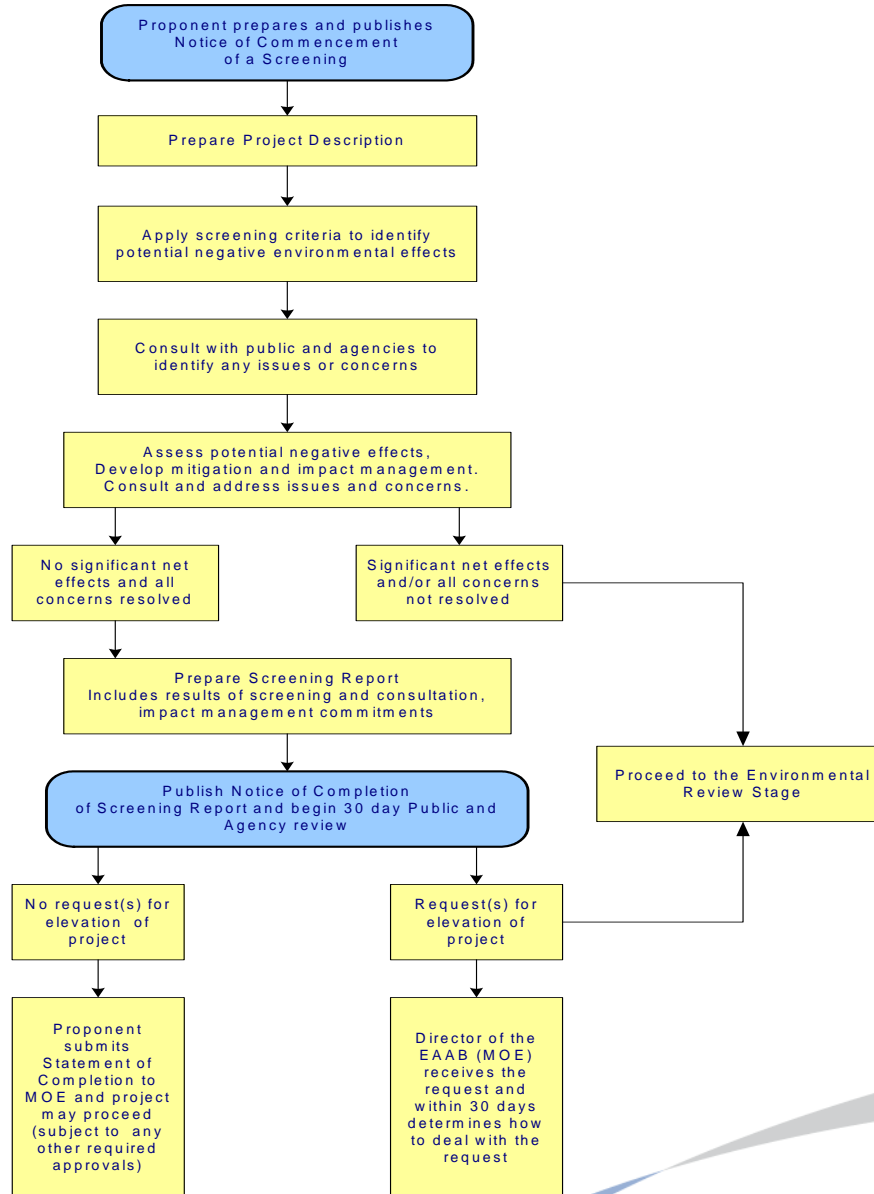


Gathering Environmental Information

- Committed to identifying public concerns and issues related to the project
- Environmental experts are commencing studies to understand some of the potential environmental effects related to the project such as:
 - Avian
 - Noise
 - Set backs (e.g. to roads, residences, wetlands)
 - Natural heritage features

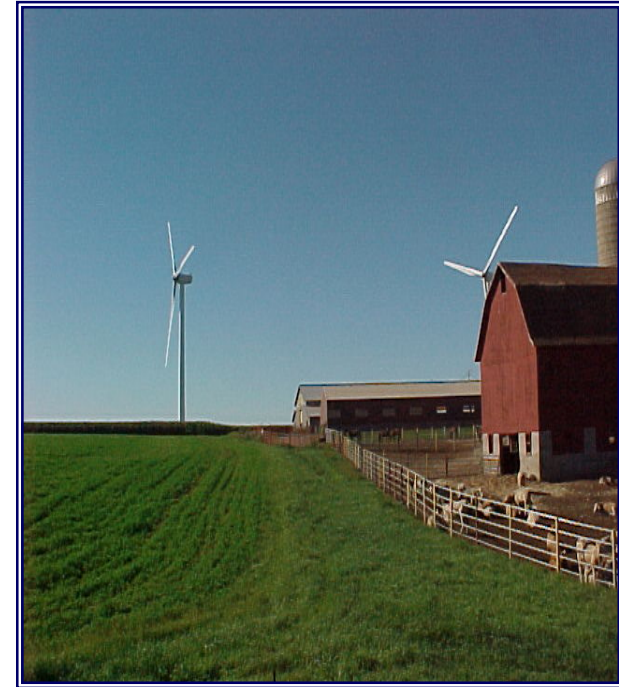


Environmental Assessment Screening Process



Next Steps

- Collection of meteorological data from test towers
- Municipal Level – Official Plan Amendments, Setbacks and Zoning By-Law Approvals
- Detailed studies on birds and local environment
- Evaluation and selection of turbine locations
- Consultation with public and government agencies (including Public Information Centre # 2)
- Finalization of Environmental Report



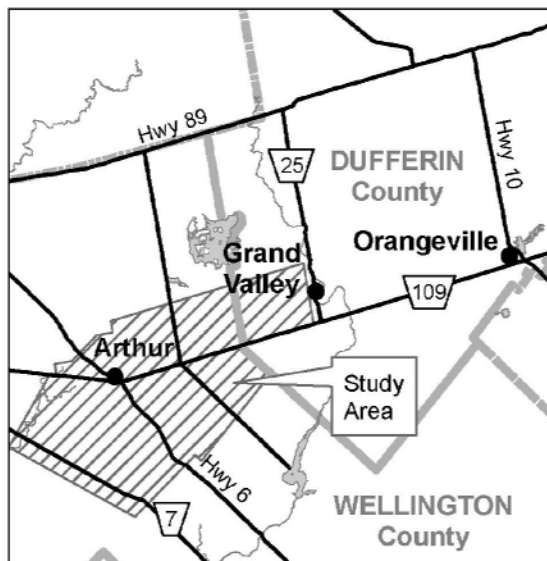
Introduction

FPL Energy is a global leader in wind energy generation with the current ownership and operating responsibilities of over 6,500 wind turbines across North America. Our parent company, FPL Group, is one of the leading energy-services organizations in the world with a commendable track record of sustainable business practices.

In response to the Ontario Power Authority's (OPA) call for renewable energy under the Standard Offer Contract (SOC) program, Conestogo Wind, ULC a wholly owned subsidiary of FPLE Canadian Wind, ULC is proposing to construct wind turbines near Arthur, Ontario. GENIVAR Ontario Inc. has been retained to assist FPL Energy in completing the project.

The Wind Farm Project will involve:

- Siting wind turbines within the broad study area that extends south of Arthur as well as east of Arthur along County Road 109.
- Within the study area, FPL Energy proposes 6 to 10 Standard Offer Contract projects consisting of 6 wind turbines of 1.5 MWs each.



Background and Project Rationale

The world has been powered primarily by carbon based fuels. However, in recent years, concern about global warming and the harmful effects of CO₂ emissions have created a new demand for clean and sustainable energy sources, such as wind.

Some of the benefits of wind power include:

- It is an inexhaustible form of renewable energy;
- It does not produce emissions that contribute to air pollution and global warming;
- Wind farms allow for the continued use of surrounding land for agricultural or recreational purposes; and
- It preserves limited natural gas supply for home heating.

Wind farms require a strong wind resource which the Arthur area has. In addition, a southern Ontario location means that power is supplied to the part of the province with the largest electricity demand.

Wind Farms and Wind Turbines

A wind turbine harnesses kinetic energy from wind and converts it to electricity through the action of blades connected to a generator.

Sophisticated monitoring and wind resource analysis allows FPL Energy to estimate with a high degree of certainty "when" and "how much" wind power is available which results in wind power as being a fairly reliable source of energy.

Wind turbines typically last for 25 years with some parts requiring replacement and servicing of the turbines generally twice per year to maintain their performance.

Environmental Assessment Process

This study is being conducted in accordance with the requirements of both the *Ontario Environmental Assessment Act* (EAA) and the *Canadian Environmental Assessment Act* (CEAA) and is subject to the environmental screening process for electricity (specifically wind farm) projects. The applicable guidelines that are being followed are the "Guide to Environmental Assessment Requirements for Electricity Projects (March 2001)" provided by the Ontario Ministry of the Environment and the "Environmental Impact Statement Guidelines for Screenings of Inland Wind Farms under the CEAA".

The provincial and federal EA processes include public and review agency consultation, evaluation of alternatives, assessment of the impacts of the proposed project, and identification of measures to mitigate any adverse impacts. Upon completion of the study, an Environmental Screening Report will be filed on public record.

As the SOC projects are relatively close in geographic proximity, a combined Environmental Screening Report will be prepared for all of the SOC projects.

Gathering Environmental Information

FPL Energy is committed to identifying public concerns and issues related to the project. To meet this commitment, environmental experts are commencing studies to understand some of the potential environmental effects related to the project, such as:

- Avian
- Noise
- Set backs (e.g., to roads, residences, wetlands)
- Natural heritage features

The results of these studies will be considered as part of the assessment process for siting of the wind turbines.

Next Steps & Comments

On March 7, 2007 this first Public Information Centre (PIC) is being hosted with the intent to publicly present FPL Energy to all stakeholders and to provide educational information on wind power, the environmental assessment screening process and the next steps that will be followed in the development process.

Following this Public Information Centre, the alternative site locations will be assessed based on the evaluation criteria [including environmental (natural, social and cultural), technical and economic considerations] and input from the public and government review agencies to determine the recommended wind turbine locations.

A second Public Information Centre will then be held later in 2007 to solicit input on the evaluation process and the recommended turbine locations.

Communication is critical to the process. At FPL Energy, we work hard to communicate fully and freely with our stakeholders from the development process and throughout the construction and long term operations. We want to be the first and best source of information about the projects. We hope that you will want to learn more about this project and will contact one of the project team members to be added to our mailing list. We are interested in hearing comments and answering questions you may have about these proposed projects. It is important to note that, with the exception of personal information, all comments will become part of the public record for the Environmental Screening Report. Please contact either one of the following team members if you have any questions or comments or wish to obtain more information on the project.

Mr. Michael DeBock
Project Manager
FPLE Canadian Wind, ULC
5500 North Service Road, 8th Fl.
Burlington, Ontario L7L 6W6
Phone: 905-335-4904 x222
Fax: 905-475-5994
Email: Michael_DeBock@fpl.com
Web-site: www.FPLEnergy.com

Mr. Sunil Kumar, P.Eng.
Project Manager
GENIVAR Ontario Inc.
600 Cochrane Drive, Suite 500
Markham, Ontario L3R 5K3
Phone: 905-475-7270 Ext. 253
Fax: 905-475-5994
Email: sunil.kumar@genivar.com

Your participation in this study would be appreciated.

5. How useful did you find the Public Information Centre? (please circle one)

Very Useful

1

2

3

4

5

Not Very Useful

6. How would you describe the nature of your interest in this study?

☒ Member of the General Public (including resident)

☐ Member of an Interest Group (Please specify: _____)

☐ Consultant

☐ Agency Representative (Please specify: _____)

☐ Other (Please specify: _____)

7. Please provide any other comments regarding the Public Information Centre (i.e., location, help received on understanding study and your concerns, opportunity provided to ask questions/comments/express concern).
It would have been more useful if each representative had been knowledgeable in all areas.

(NOTE: Your completed Comment Sheet will be included in the Environmental Screening Report.)

Please return this completed Comment Sheet to staff at the Registration Table or you can fax or mail it by, March 29, 2007 to:

Mr. Michael DeBock
Project Manager
FPLE Canadian Wind, ULC
5500 North Service Road, 8th Floor
Burlington, Ontario L7L 6W6
Phone: 905-335-4904 x222
Fax: 905-475-5994
Email: Michael.DeBock@fpl.com
Web-site: www.FPLEnergy.com

Mr. Sunil Kumar, P.Eng.
Project Manager
GENIVAR Ontario Inc.
600 Cochrane Drive, Suite 500
Markham, Ontario L3R 5K3
Phone: 905-475-7270 Ext. 253
Fax: 905-475-5994
Email: sunil.kumar@genivar.com

(#3 cont'd)

Also, there was a study done (in Tennessee?) about the neurological damage caused by a low frequency vibration emitted by these windmills. Has anyone determined how far away these vibrations can be detected?

Stuart Kuma

**Conestogo Wind Farm Project:
Environmental Screening Process**

FPL Energy



COMMENT SHEET PIC#1

March 7, 2007

FPL Energy is interested in hearing the community's comments, questions, concerns and suggestions regarding the process and criteria for locating the wind turbines on the properties. Please take a few minutes to complete this brief comment sheet. All comments will be carefully considered in the Environmental Assessment Screening Process.

1. Do you have any comments related to the existing conditions in the study area?

It seems too densely populated - humans and livestock -

to be able to accommodate so many windmills in a safe manner.

* It is also prone to tornadoes - the school children

practice tornado drills more often than fire drills.

2. Do you have any comments, concerns, questions or suggestions regarding the Environmental Screening Process or the overall approach being considered for siting of the wind turbines?

Landowners should have more say about the location

of windmills on their property. The lease agreement

doesn't give landowners very many rights.

3. Do you have any comments, concerns, questions or suggestions regarding the proposed project or environmental information being gathered?

There is a recommended safe distance from residences,

but what about barns and livestock? Damages have

been paid to farmers in the past for losses due to the

effects on cattle from high-tension power lines. Let's not

make the same mistake with these giant windmills.

4. What do you see as the benefits of the proposed project from the perspective of your organization or as a resident of the area?

As a resident I see no advantage other than personal

gain if a windmill is located on our property. If it is

located on a neighbouring property it could very detrimentally

affect our property value - due to the noise and visual pollution.

from a global perspective I question whether the power produced by the windmills during their lifespan will justify the power used to build them. Is it really more cost effective to build and transport such monstrous things!

Conestogo Wind Farm Project:
Environmental Screening Process

FPL Energy



March 7, 2007

COMMENT SHEET PIC#1

FPL Energy is interested in hearing the community's comments, questions, concerns and suggestions regarding the process and criteria for locating the wind turbines on the properties. Please take a few minutes to complete this brief comment sheet. All comments will be carefully considered in the Environmental Assessment Screening Process.

1. Do you have any comments related to the existing conditions in the study area?

It seems too densely populated - humans and livestock -

to be able to accommodate so many windmills in a safe manner.

* It is also prone to tornadoes - the school children

practice tornado drills more often than fire drills.

2. Do you have any comments, concerns, questions or suggestions regarding the Environmental Screening Process or the overall approach being considered for siting of the wind turbines?

Landowners should have more say about the location

of windmills on their property. The lease agreement

doesn't give landowners very many rights.

3. Do you have any comments, concerns, questions or suggestions regarding the proposed project or environmental information being gathered?

There is a recommended safe distance from residences,

but what about barns and livestock? Damages have

been paid to farmers in the past for losses due to the

effects on cattle from high-tension power lines. Let's not

make the same mistake with these giant windmills.

4. What do you see as the benefits of the proposed project from the perspective of your organization or as a resident of the area?

As a resident I see no advantage other than personal

gain if a windmill is located on our property. If it is

located on a neighbouring property it could very detrimentally

affect our property value - due to the noise and visual pollution.

from a global perspective I question whether the power produced by the windmills during their lifespan will justify the power used to build them. Is it really more cost effective to build and transport such monstrosities!

Stuart Kinnear

5. How useful did you find the Public Information Centre? (please circle one)

Very Useful

1

2

3

4

5

Not Very Useful

6. How would you describe the nature of your interest in this study?

☒ Member of the General Public (including resident)

☐ Member of an Interest Group (Please specify: _____)

☐ Consultant

☐ Agency Representative (Please specify: _____)

☐ Other (Please specify: _____)

7. Please provide any other comments regarding the Public Information Centre (i.e., location, help received on understanding study and your concerns, opportunity provided to ask questions/comments/express concern).
It would have been more useful if each representative had been knowledgeable in all areas.

(NOTE: Your completed Comment Sheet will be included in the Environmental Screening Report.)
Please return this completed Comment Sheet to staff at the Registration Table or you can fax or mail it by, March 29, 2007 to:

Mr. Michael DeBock
Project Manager
FPLE Canadian Wind, LLC
5500 North Service Road, 8th Floor
Burlington, Ontario L7L 6W6
Phone: 905-335-4904 x222
Fax: 905-475-5994
Email: Michael_DeBock@fpl.com
Web-site: www.FPLEenergy.com

Mr. Sunil Kumar, P.Eng.
Project Manager
GENIVAR Ontario Inc.
600 Cochran Drive, Suite 500
Markham, Ontario L3R 5K3
Phone: 905-475-7270 Ext. 253
Fax: 905-475-5994
Email: sunil.kumar@genivar.com

Also, there was a study done (in Tennessee?) about the neurological damage caused by a low frequency vibration emitted by these windmills. Has anyone determined how far away these vibrations can be detected?

(#3 cont'd)



FPL Energy

Conestogo Wind Farm Project:
Environmental Screening Process

COMMENT SHEET PIC#1

March 7, 2007

FPL Energy is interested in hearing the community's comments, questions, concerns and suggestions regarding the process and criteria for locating the wind turbines on the properties. Please take a few minutes to complete this brief comment sheet. All comments will be carefully considered in the Environmental Assessment Screening Process.

1. Do you have any comments related to the existing conditions in the study area?

THE EXISTING CONDITIONS MAINTAIN A RURAL CHARACTER
INCLUDING LOW INDUSTRIAL NOISE AND CLEAR VIEWS OF
THE NIGHT SKY

2. Do you have any comments, concerns, questions or suggestions regarding the Environmental Screening Process or the overall approach being considered for siting of the wind turbines?

3. Do you have any comments, concerns, questions or suggestions regarding the proposed project or environmental information being gathered?

THE AVIATION LIGHTING OF TURBINES CAUSES LIGHT
POLLUTION. THIS LIGHT POLLUTION IS CAUSED BY MULTIPLE
FLASHING/STROBE LIGHTS INSTALLED ON TURBINES.
THE QUALITY OF LIFE FOR RESIDENTS WILL BE REDUCED BY
LIGHT POLLUTION AND REDUCED VISIBILITY OF THE NIGHT SKY.
4. What do you see as the benefits of the proposed project from the perspective of your organization or as a resident of the area?

CLEAN RENEWABLE ENERGY

5. How useful did you find the Public Information Centre? (please circle one)

Very Useful

1

2

3

4

5

Not Very Useful

6. How would you describe the nature of your interest in this study?

Member of the General Public (including resident)

Member of an Interest Group (Please specify: _____)

Consultant

Agency Representative (Please specify: _____)

Other (Please specify: _____)

7. Please provide any other comments regarding the Public Information Centre (i.e., location, help received on understanding study and your concerns, opportunity provided to ask questions/comments/express concern).

(NOTE: Your completed Comment Sheet will be included in the Environmental Screening Report.)

Please return this completed Comment Sheet to staff at the Registration Table or you can fax or mail it by, March 29, 2007 to:

Mr. Michael DeBock
Project Manager
FPLE Canadian Wind, LLC
5500 North Service Road, 8th Floor
Burlington, Ontario L7L 6W6
Phone: 905-335-4904 x222
Fax: 905-475-5994
Email: Michael_DeBock@fpl.com
Web-site: www.FPLEnergy.com

Mr. Sunil Kumar, P.Eng.
Project Manager
GENIVAR Ontario Inc.
600 Cochran Drive, Suite 500
Markham, Ontario L3R 5K3
Phone: 905-475-7270 Ext. 253
Fax: 905-475-5994
Email: sunil.kumar@genivar.com



FPL Energy

Conestogo Wind Farm Project: Environmental Screening Process

COMMENT SHEET PIC#1

March 7, 2007

FPL Energy is interested in hearing the community's comments, questions, concerns and suggestions regarding the process and criteria for locating the wind turbines on the properties. Please take a few minutes to complete this brief comment sheet. All comments will be carefully considered in the Environmental Assessment Screening Process.

1. Do you have any comments related to the existing conditions in the study area?

Believe Area of my property ownership

Within the Alma watershed complex & headwaters of

The Carroll Cr. is slated for reforestation, woodlot

& migratory birds & waterfowl % of water & woods

2. Do you have any comments, concerns, questions or suggestions regarding the Environmental Screening

Process or the overall approach being considered for siting of the wind turbines?

What would be the impact on property values of

eg. "estate" or "retract" rural properties?

Setback from residences, 350m? is still

too close

3. Do you have any comments, concerns, questions or suggestions regarding the proposed project or

environmental information being gathered?

Concerned that night lights will have an impact

on the night sky/transparency - daytime noise

bird kills, ground wildlife corridors

4. What do you see as the benefits of the proposed project from the perspective of your organization or as a

resident of the area?

only if the local residents will benefit from

cheaper, local electricity, i.e. by passing the

grid

5. How useful did you find the Public Information Centre? (please circle one)

Very Useful

Not Very Useful

5

4

3

2

1

6. How would you describe the nature of your interest in this study?

Member of the General Public (including resident)

Member of an Interest Group (Please specify: _____)

Consultant

Agency Representative (Please specify: _____)

Other (Please specify: _____)

FARM BUSINESS, WOODLAND RESTORATION

7. Please provide any other comments regarding the Public Information Centre (i.e., location, help received on understanding study and your concerns, opportunity provided to ask questions/comments/express concern).

USEFUL & INFORMATIVE

(NOTE: Your completed Comment Sheet will be included in the Environmental Screening Report.)
Please return this completed Comment Sheet to staff at the Registration Table or you can fax or mail it by, March 29, 2007 to:

Mr. Michael DeBock
Project Manager
FPLE Canadian Wind, ULC
5500 North Service Road, 8th Floor
Burlington, Ontario L7L 6W6
Phone: 905-335-4904 x222
Fax: 905-475-5994
Email: Michael.DeBock@fpl.com
Web-site: www.FPLEnergy.com

Mr. Sunil Kumar, P.Eng.
Project Manager
GENIVAR Ontario Inc.
600 Cochran Drive, Suite 500
Markham, Ontario L3R 5K3
Phone: 905-475-7270 Ext. 253
Fax: 905-475-5994
Email: sunil.kumar@genivar.com



FPL Energy

Conestogo Wind Farm Project:
Environmental Screening Process

COMMENT SHEET PIC#1

March 7, 2007

FPL Energy is interested in hearing the community's comments, questions, concerns and suggestions regarding the process and criteria for locating the wind turbines on the properties. Please take a few minutes to complete this brief comment sheet. All comments will be carefully considered in the Environmental Assessment Screening Process.

1. Do you have any comments related to the existing conditions in the study area?

Migration Route. from Lake Huron
please keep no interference of good
structure.

2. Do you have any comments, concerns, questions or suggestions regarding the Environmental Screening Process or the overall approach being considered for siting of the wind turbines?

Top Notes for East Huron
County of Livingston a County of
Jefferson should be informed
as separate information record
3. Do you have any comments, concerns, questions or suggestions regarding the proposed project or environmental information being gathered?

4. What do you see as the benefits of the proposed project from the perspective of your organization or as a resident of the area?

These provide a copy
of Bill 151 to make a
address as this was not
available at the meeting.

5. How useful did you find the Public Information Centre? (please circle one)

Very Useful

Not Very Useful

6. How would you describe the nature of your interest in this study?

☒ Member of the General Public (including resident)

☐ Member of an Interest Group (Please specify: _____)

☐ Consultant

☐ Agency Representative (Please specify: _____)

☐ Other (Please specify: _____)

7. Please provide any other comments regarding the Public Information Centre (i.e., location, help received on understanding study and your concerns, opportunity provided to ask questions/comments/express concern).

(NOTE: Your completed Comment Sheet will be included in the Environmental Screening Report.)

Please return this completed Comment Sheet to staff at the Registration Table or you can fax or mail it by, March 29, 2007 to:

Mr. Michael DeBock
Project Manager
FPLE Canadian Wind, LLC
5500 North Service Road, 8th Floor
Burlington, Ontario L7L 6W6
Phone: 905-335-4904 x222
Fax: 905-475-5994
Email: Michael_DeBock@fpl.com
Web-site: www.FPLEnergy.com

Mr. Sunil Kumar, P. Eng.
Project Manager
GENIVAR Ontario Inc.
600 Cochrane Drive, Suite 500
Markham, Ontario L3R 5K3
Phone: 905-475-7270 Ext. 253
Fax: 905-475-5994
Email: sunil.kumar@genivar.com

Charmel Butler
P3 Graves Valley, ON
Said 21-22 # 033156
L01960
Meeting 1st please for
Asian Study



FPL Energy

Conestogo Wind Farm Project: Environmental Screening Process

March 7, 2007

COMMENT SHEET PIC#1

FPL Energy is interested in hearing the community's comments, questions, concerns and suggestions regarding the process and criteria for locating the wind turbines on the properties. Please take a few minutes to complete this brief comment sheet. All comments will be carefully considered in the Environmental Assessment Screening Process.

1. Do you have any comments related to the existing conditions in the study area?

YES

2. Do you have any comments, concerns, questions or suggestions regarding the Environmental Screening Process or the overall approach being considered for siting of the wind turbines?

NO

3. Do you have any comments, concerns, questions or suggestions regarding the proposed project or environmental information being gathered?

NO

4. What do you see as the benefits of the proposed project from the perspective of your organization or as a resident of the area?

NO BENEFIT

1 MIN

5. How useful did you find the Public Information Centre? (please circle one)

Very Useful

Not Very Useful

6. How would you describe the nature of your interest in this study?

Member of the General Public (including resident)

Member of an Interest Group (Please specify: _____)

Consultant

Agency Representative (Please specify: _____)

Other (Please specify: _____)

7. Please provide any other comments regarding the Public Information Centre (i.e., location, help received on understanding study and your concerns, opportunity provided to ask questions/comments/express concern).

I WOULD PREFER TO BE NOTIFIED WHERE WIND
TURBINE ARE BEING LOCATED

(NOTE: Your completed Comment Sheet will be included in the Environmental Screening Report.)

Please return this completed Comment Sheet to staff at the Registration Table or you can fax or mail it by, March 29, 2007 to:

Mr. Michael DeBock
Project Manager
FPLE Canadian Wind, ULC
5500 North Service Road, 8th Floor
Burlington, Ontario L7L 6W6
Phone: 905-335-4904 x222
Fax: 905-475-5994
Email: Michael_DeBock@fpl.com
Web-site: www.FPLEnergy.com

Mr. Sunil Kumar, P. Eng.
Project Manager
GENIVAR Ontario Inc.
600 Cochran Drive, Suite 500
Markham, Ontario L3R 5K3
Phone: 905-475-7270 Ext. 253
Fax: 905-475-5994
Email: sunil.kumar@genivar.com

JOHN MITSUD

6000 KAY RD.

BURLINGTON, ONT. N1G 4M7

519 7635353



FPL Energy

**Conestogo Wind Farm Project:
Environmental Screening Process**

COMMENT SHEET PIC#1

March 7, 2007

FPL Energy is interested in hearing the community's comments, questions, concerns and suggestions regarding the process and criteria for locating the wind turbines on the properties. Please take a few minutes to complete this brief comment sheet. All comments will be carefully considered in the Environmental Assessment Screening Process.

1. Do you have any comments related to the existing conditions in the study area?

2. Do you have any comments, concerns, questions or suggestions regarding the Environmental Screening Process or the overall approach being considered for siting of the wind turbines?

3. Do you have any comments, concerns, questions or suggestions regarding the proposed project or environmental information being gathered?

have voiced them

4. What do you see as the benefits of the proposed project from the perspective of your organization or as a resident of the area?

5. How useful did you find the Public Information Centre? (please circle one)

Very Useful

Not Very Useful

6. How would you describe the nature of your interest in this study?

Member of the General Public (including resident)

Member of an Interest Group (Please specify: _____)

Consultant

Agency Representative (Please specify: _____)

Other (Please specify: _____)

7. Please provide any other comments regarding the Public Information Centre (i.e., location, help received on understanding study and your concerns, opportunity provided to ask questions/comments/express concern).

good location & time
lots more questions & concerns answered
good hospitality
visuals could be more in depth

(NOTE: Your completed Comment Sheet will be included in the Environmental Screening Report.)

Please return this completed Comment Sheet to staff at the Registration Table or you can fax or mail it by, March 29, 2007 to:

Mr. Michael DeBock
Project Manager
FPLE Canadian Wind, ULC
5500 North Service Road, 8th Floor
Burlington, Ontario L7L 6W6
Phone: 905-335-4904 x222
Fax: 905-475-5994
Email: Michael.DeBock@fpl.com
Web-site: www.FPLEnergy.com

Mr. Sunil Kumar, P.Eng.
Project Manager
GENIVAR Ontario Inc.
600 Cochran Drive, Suite 500
Markham, Ontario L3R 5K3
Phone: 905-475-7270 Ext. 253
Fax: 905-475-5994
Email: sunil.kumar@genivar.com



FPL Energy

Conestogo Wind Farm Project:
Environmental Screening Process

COMMENT SHEET PIC#1

March 7, 2007

FPL Energy is interested in hearing the community's comments, questions, concerns and suggestions regarding the process and criteria for locating the wind turbines on the properties. Please take a few minutes to complete this brief comment sheet. All comments will be carefully considered in the Environmental Assessment Screening Process.

1. Do you have any comments related to the existing conditions in the study area?

No

2. Do you have any comments, concerns, questions or suggestions regarding the Environmental Screening Process or the overall approach being considered for siting of the wind turbines?

Nothing at the moment

3. Do you have any comments, concerns, questions or suggestions regarding the proposed project or environmental information being gathered?

The studies should also take into account future areas for reforestation. The County is planting thousands of trees to re-establish wildlife corridors for the future. The FPL video says only crops + rangeland can occur around turbines.

4. What do you see as the benefits of the proposed project from the perspective of your organization or as a resident of the area?

Not sure yet. Not sure how this will affect peace + quiet in rural area, or land values. Concerned about light pollution.

5. How useful did you find the Public Information Centre? (please circle one)

Very Useful

1

2

3

4

5

Not Very Useful

6. How would you describe the nature of your interest in this study?

Member of the General Public (including resident)

Member of an Interest Group (Please specify: _____)

Consultant

Agency Representative (Please specify: _____)

Other (Please specify: _____)

7. Please provide any other comments regarding the Public Information Centre (i.e., location, help received on understanding study and your concerns, opportunity provided to ask questions/comments/express concern).

friendly but some technical questions they
couldn't answer e.g. whether there will be light
pollution from stage lights

(NOTE: Your completed Comment Sheet will be included in the Environmental Screening Report.)

Please return this completed Comment Sheet to staff at the Registration Table or you can fax or mail it by, March 29, 2007 to:

Mr. Michael DeBock
Project Manager
FPLE Canadian Wind, ULC
5500 North Service Road, 8th Floor
Burlington, Ontario L7L 6W6
Phone: 905-335-4904 x222
Fax: 905-475-5994
Email: Michael_DeBock@fpl.com
Web-site: www.FPLEnergy.com

Mr. Sunil Kumar, P. Eng.
Project Manager
GENIVAR Ontario Inc.
600 Cochran Drive, Suite 500
Markham, Ontario L3R 5K3
Phone: 905-475-7270 Ext. 253
Fax: 905-475-5994
Email: sunil.kumar@genivar.com



FPL Energy

Conestogo Wind Farm Project: Environmental Screening Process

March 7, 2007

FPL Energy is interested in hearing the community's comments, questions, concerns and suggestions regarding the process and criteria for locating the wind turbines on the properties. Please take a few minutes to complete this brief comment sheet. All comments will be carefully considered in the Environmental Assessment Screening Process.

1. Do you have any comments related to the existing conditions in the study area?

very suitable

2. Do you have any comments, concerns, questions or suggestions regarding the Environmental Screening Process or the overall approach being considered for siting of the wind turbines?

Very thorough screening with concern for the environment

3. Do you have any comments, concerns, questions or suggestions regarding the proposed project or environmental information being gathered?

We (Don Ranney & Rick Stavis) have a 30 kw turbine on 5R-21 (fence 7798-7732). I am glad you are here. It means our investment is worthwhile. Can we access information from Met 13 station?

4. What do you see as the benefits of the proposed project from the perspective of your organization or as a resident of the area?

This will be of great benefit to all Ontarians - more green power means less pollution and possibly a slower rise in cost of electricity. It's a small step for mankind in limiting global warming - unfortunately we slept in or this one, but it is never too late to do all we can

COMMENT SHEET PIC#1

Don Ranney & Rick Stavis
519 848 5600
ranney@hughes.net
Please reply to Dr. Don Ranney

5. How useful did you find the Public Information Centre? (please circle one)

Very Useful

Not Very Useful

5

4

3

2

1

6. How would you describe the nature of your interest in this study?

Member of the General Public (including resident)

Member of an Interest Group (Please specify: _____)

Consultant

Agency Representative (Please specify: _____)

Other (Please specify: owner of a wind turbine)

7. Please provide any other comments regarding the Public Information Centre (i.e., location, help received on understanding study and your concerns, opportunity provided to ask questions/comments/express concern).

This is the best way to prevent opposition by
silly people who don't know what they are talking
about

(NOTE: Your completed Comment Sheet will be included in the Environmental Screening Report.)
Please return this completed Comment Sheet to staff at the Registration Table or you can fax or mail it by, March 29, 2007 to:

Mr. Michael DeBock
Project Manager
FPLE Canadian Wind, ULC
5500 North Service Road, 8th Floor
Burlington, Ontario L7L 6W6
Phone: 905-335-4904 x222
Fax: 905-475-5994
Email: Michael_DeBock@fpl.com
Web-site: www.FPLEnergy.com

Mr. Sunil Kumar, P.Eng.
Project Manager
GENIVAR Ontario Inc.
600 Cochran Drive, Suite 500
Markham, Ontario L3R 5K3
Phone: 905-475-7270 Ext. 253
Fax: 905-475-5994
Email: sunil.kumar@genivar.com



FPL Energy

Conestogo Wind Farm Project:
Environmental Screening Process

COMMENT SHEET PIC#1

March 7, 2007

FPL Energy is interested in hearing the community's comments, concerns and suggestions regarding the process and criteria for locating the wind turbines on the properties. Please take a few minutes to complete this brief comment sheet. All comments will be carefully considered in the Environmental Assessment Screening Process.

1. Do you have any comments related to the existing conditions in the study area?

2. Do you have any comments, concerns, questions or suggestions regarding the Environmental Screening Process or the overall approach being considered for siting of the wind turbines?

3. Do you have any comments, concerns, questions or suggestions regarding the proposed project or environmental information being gathered?

I would like to have info coming
the cost of wind power is the other
forms of energy development.

4. What do you see as the benefits of the proposed project from the perspective of your organization or as a resident of the area?

Reduced taxes
improved dependability of supply

R. GAMMADE
RR 2
BEWOOD ON
NOB 150

Mr. Michael DeBock
Project Manager
FPLE Canadian Wind, LLC
5500 North Service Road, 8th Floor
Burlington, Ontario L7L 6W6
Phone: 905-335-4904 x222
Fax: 905-475-5994
Email: Michael.DeBock@fpl.com
Web-site: www.FPLEnergy.com

Mr. Sunil Kumar, P.Eng.
Project Manager
GENIVAR Ontario Inc.
600 Cochrane Drive, Suite 500
Markham, Ontario L3R 5K3
Phone: 905-475-7270 Ext. 253
Fax: 905-475-5994
Email: sunil.kumar@genivar.com

Please return this completed Comment Sheet to staff at the Registration Table or you can fax or mail it by, March 29, 2007 to:

(NOTE: Your completed Comment Sheet will be included in the Environmental Screening Report.)

7. Please provide any other comments regarding the Public Information Centre (i.e., location, help received on understanding study and your concerns, opportunity provided to ask questions/comments/express concern).

Member of the General Public (including resident) ☒

Member of an Interest Group (Please specify: _____)

Consultant _____

Agency Representative (Please specify: _____)

Other (Please specify: _____)

6. How would you describe the nature of your interest in this study?

Very Useful 1 2 3 4 5
Not Very Useful

5. How useful did you find the Public Information Centre? (please circle one)



FPL Energy

Conestogo Wind Farm Project:
Environmental Screening Process

COMMENT SHEET PIC#1

March 7, 2007

FPL Energy is interested in hearing the community's comments, questions, concerns and suggestions regarding the process and criteria for locating the wind turbines on the properties. Please take a few minutes to complete this brief comment sheet. All comments will be carefully considered in the Environmental Assessment Screening Process.

1. Do you have any comments related to the existing conditions in the study area?

- I hoped FPL would have a code of ethics
and include respecting the rights of neighbouring
properties (the representative said I should look I
upon the internet)

2. Do you have any comments, concerns, questions or suggestions regarding the Environmental Screening Process or the overall approach being considered for siting of the wind turbines?

3. Do you have any comments, concerns, questions or suggestions regarding the proposed project or environmental information being gathered?

4. What do you see as the benefits of the proposed project from the perspective of your organization or as a resident of the area?

- should be located in low populated areas
- if it believe they should be no closer than
1000 meters to any residences

5. How useful did you find the Public Information Centre? (please circle one)

Very Useful 1 2 3 4 5
Not Very Useful

6. How would you describe the nature of your interest in this study?

- ☒ Member of the General Public (including resident)
☐ Member of an Interest Group (Please specify: _____)
☐ Consultant
☐ Agency Representative (Please specify: _____)
☐ Other (Please specify: _____)

7. Please provide any other comments regarding the Public Information Centre (i.e., location, help received on understanding study and your concerns, opportunity provided to ask questions/comments/express concern).

I would have preferred a presentation of a given time
and chance to ask to questions & answers.
I don't consider this found as very helpful.

(NOTE: Your completed Comment Sheet will be included in the Environmental Screening Report.)

Please return this completed Comment Sheet to staff at the Registration Table or you can fax or mail it by, March 29, 2007 to:

Mr. Michael DeBock
Project Manager
FPLE Canadian Wind, ULC
5500 North Service Road, 8th Floor
Burlington, Ontario L7L 6W6
Phone: 905-335-4904 x222
Fax: 905-475-5994
Email: Michael.DeBock@fpl.com
Web-site: www.FPLEnergy.com

Mr. Sunil Kumar, P. Eng.
Project Manager
GENIVAR Ontario Inc.
600 Cochrane Drive, Suite 500
Markham, Ontario L3R 5K3
Phone: 905-475-7270 Ext. 253
Fax: 905-475-5994
Email: sunil.kumar@genivar.com



FPL Energy

Conestogo Wind Farm Project:
Environmental Screening Process

March 7, 2007

COMMENT SHEET PIC#1

FPL Energy is interested in hearing the community's comments, questions, concerns and suggestions regarding the process and criteria for locating the wind turbines on the properties. Please take a few minutes to complete this brief comment sheet. All comments will be carefully considered in the Environmental Assessment Screening Process.

1. Do you have any comments related to the existing conditions in the study area?

concerned about noise levels from turbines
concerned about setbacks being too small
my property value decreasing

2. Do you have any comments, concerns, questions or suggestions regarding the Environmental Screening Process or the overall approach being considered for siting of the wind turbines?

We are not told enough information
to make proper decisions. Every form of
information is vague.

3. Do you have any comments, concerns, questions or suggestions regarding the proposed project or environmental information being gathered?

We need to have more information
to make a proper decision.

4. What do you see as the benefits of the proposed project from the perspective of your organization or as a resident of the area?

Nothing

5. How useful did you find the Public Information Centre? (please circle one)

Very Useful Not Very Useful

6. How would you describe the nature of your interest in this study?

- Member of the General Public (including resident)
- Member of an Interest Group (Please specify: _____)
- Consultant
- Agency Representative (Please specify: _____)
- Other (Please specify: _____)

7. Please provide any other comments regarding the Public Information Centre (i.e., location, help received on understanding study and your concerns, opportunity provided to ask questions/comments/express concern).

(NOTE: Your completed Comment Sheet will be included in the Environmental Screening Report.)

Please return this completed Comment Sheet to staff at the Registration Table or you can fax or mail it by, March 29, 2007 to:

Mr. Michael DeBock
Project Manager
FPLE Canadian Wind, ULC
5500 North Service Road, 8th Floor
Burlington, Ontario L7L 6W6
Phone: 905-335-4904 X222
Fax: 905-475-5994
Email: Michael_DeBock@fpl.com
Web-site: www.FPLEnergy.com

Mr. Sunil Kumar, P.Eng.
Project Manager
GENIVAR Ontario Inc.
600 Cochran Drive, Suite 500
Markham, Ontario L3R 5K3
Phone: 905-475-7270 Ext. 253
Fax: 905-475-5994
Email: sunil.kumar@genivar.com



MARCH 7 2007
- 928-2496

COMMENT SHEET PIC#1

March 7, 2007

FPL Energy is interested in hearing the community's comments, questions, concerns and suggestions regarding the process and criteria for locating the wind turbines on the properties. Please take a few minutes to complete this brief comment sheet. All comments will be carefully considered in the Environmental Assessment Screening Process.

1. Do you have any comments related to the existing conditions in the study area?

You are refusing to pay landowners a reasonable amount for a lifetime lease / easement on their land.

2. Do you have any comments, concerns, questions or suggestions regarding the Environmental Screening Process or the overall approach being considered for siting of the wind turbines?

Original study of the location between Bellwood and Little Mark.

3. Do you have any comments, concerns, questions or suggestions regarding the proposed project or environmental information being gathered?

4. What do you see as the benefits of the proposed project from the perspective of your organization or as a resident of the area?

None

5. How useful did you find the Public Information Centre? (please circle one)

Very Useful

1

2

3

4

Not Very Useful

6. How would you describe the nature of your interest in this study?

☒ Member of the General Public (including resident)

☐ Member of an Interest Group (Please specify: _____)

☐ Consultant

☐ Agency Representative (Please specify: _____)

☐ Other (Please specify: _____)

7. Please provide any other comments regarding the Public Information Centre (i.e., location, help received on understanding study and your concerns, opportunity provided to ask questions/comments/express concern).

Very limited - at upc web site

get concerns can be addressed - This

"Public" meeting is simply an OMB request

so you can proceed

(NOTE: Your completed Comment Sheet will be included in the Environmental Screening Report.)

Please return this completed Comment Sheet to staff at the Registration Table or you can fax or mail it by, March 29, 2007 to:

Mr. Michael DeBock
Project Manager
FPLE Canadian Wind, ULC
5500 North Service Road, 8th Floor
Burlington, Ontario L7L 6W6
Phone: 905-335-4904 x222
Fax: 905-475-5994
Email: Michael.DeBock@fppl.com
Web-site: www.FPLEnergy.com

Mr. Sunil Kumar, P.Eng.
Project Manager
GENIVAR Ontario Inc.
600 Cochrane Drive, Suite 500
Markham, Ontario L3R 5K3
Phone: 905-475-7270 Ext. 253
Fax: 905-475-5994
Email: sunil.kumar@genivar.com

With Est Room

033097-51221-22

End Letter 2 P#3 Grand Valley

20N1C0



FPL Energy

**Conestogo Wind Farm Project:
Environmental Screening Process**

COMMENT SHEET PIC#1

March 7, 2007

FPL Energy is interested in hearing the community's comments, concerns and suggestions regarding the process and criteria for locating the wind turbines on the properties. Please take a few minutes to complete this brief comment sheet. All comments will be carefully considered in the Environmental Assessment Screening Process.

1. Do you have any comments related to the existing conditions in the study area?

2. Do you have any comments, concerns, questions or suggestions regarding the Environmental Screening Process or the overall approach being considered for siting of the wind turbines?

Seems to be a logical process

3. Do you have any comments, concerns, questions or suggestions regarding the proposed project or environmental information being gathered?

No

4. What do you see as the benefits of the proposed project from the perspective of your organization or as a resident of the area?

*- Injection of cash into farming community
- Increased tax income for municipality
- Good for the environment.*

5. How useful did you find the Public Information Centre? (please circle one)

Very Useful

Not Very Useful

6. How would you describe the nature of your interest in this study?

Member of the General Public (including resident)

Member of an Interest Group (Please specify: _____)

Consultant

Agency Representative (Please specify: _____)

Other (Please specify: option holder)

7. Please provide any other comments regarding the Public Information Centre (i.e., location, help received on understanding study and your concerns, opportunity provided to ask questions/comments/express concern).
Lots of representatives here. Appreciated the chance to ask questions.

Staff was friendly and easy to talk to.

Thank you!

(NOTE: Your completed Comment Sheet will be included in the Environmental Screening Report.)

Please return this completed Comment Sheet to staff at the Registration Table or you can fax or mail it by, March 29, 2007 to:

Mr. Michael DeBock
Project Manager
FPL Canadian Wind, ULC
5500 North Service Road, 8th Floor
Burlington, Ontario L7L 6W6
Phone: 905-335-4904 x222
Fax: 905-475-5994
Email: Michael.DeBock@fpl.com
Web-site: www.FPLEnergy.com

Mr. Sunil Kumar, P. Eng.
Project Manager
GENIVAR Ontario Inc.
600 Cochrane Drive, Suite 500
Markham, Ontario L3R 5K3
Phone: 905-475-7270 Ext. 253
Fax: 905-475-5994
Email: sunil.kumar@genivar.com



FPL Energy

**Conestogo Wind Farm Project:
Environmental Screening Process**

COMMENT SHEET PIC#1

March 7, 2007

FPL Energy is interested in hearing the community's comments, concerns and suggestions regarding the process and criteria for locating the wind turbines on the properties. Please take a few minutes to complete this brief comment sheet. All comments will be carefully considered in the Environmental Assessment Screening Process.

1. Do you have any comments related to the existing conditions in the study area?

no comment

2. Do you have any comments, concerns, questions or suggestions regarding the Environmental Screening Process or the overall approach being considered for siting of the wind turbines?

no comments

3. Do you have any comments, concerns, questions or suggestions regarding the proposed project or environmental information being gathered?

no concerns

4. What do you see as the benefits of the proposed project from the perspective of your organization or as a resident of the area?

make use of the wind

5. How useful did you find the Public Information Centre? (please circle one)

Very Useful

Not Very Useful

6. How would you describe the nature of your interest in this study?

- Member of the General Public (including resident)
- Member of an Interest Group (Please specify: _____)
- Consultant
- Agency Representative (Please specify: _____)
- Other (Please specify: _____)

7. Please provide any other comments regarding the Public Information Centre (i.e., location, help received on understanding study and your concerns, opportunity provided to ask questions/comments/express concern).

(NOTE: Your completed Comment Sheet will be included in the Environmental Screening Report.)

Please return this completed Comment Sheet to staff at the Registration Table or you can fax or mail it by, March 29, 2007 to:

Mr. Michael DeBock
Project Manager
FPLE Canadian Wind, ULC
5500 North Service Road, 8th Floor
Burlington, Ontario L7L 6W6
Phone: 905-335-4904 x222
Fax: 905-475-5994
Email: Michael_DeBock@fpl.com
Web-site: www.FPLEnergy.com

Mr. Sunil Kumar, P.Eng.
Project Manager
GENIVAR Ontario Inc.
600 Cochran Drive, Suite 500
Markham, Ontario L3R 5K3
Phone: 905-475-7270 Ext. 253
Fax: 905-475-5994
Email: sunil.kumar@genivar.com



FPL Energy

Conestogo Wind Farm Project: Environmental Screening Process

COMMENT SHEET PIC#1

March 7, 2007

FPL Energy is interested in hearing the community's comments, concerns and suggestions regarding the process and criteria for locating the wind turbines on the properties. Please take a few minutes to complete this brief comment sheet. All comments will be carefully considered in the Environmental Assessment Screening Process.

1. Do you have any comments related to the existing conditions in the study area?

no.

2. Do you have any comments, concerns, questions or suggestions regarding the Environmental Screening Process or the overall approach being considered for siting of the wind turbines?

no.

3. Do you have any comments, concerns, questions or suggestions regarding the proposed project or environmental information being gathered?

Should be much more info. in PP & con.

meeting with opponents of the plan.

4. What do you see as the benefits of the proposed project from the perspective of your organization or as a resident of the area?

Johnsonville here. Since my hydro bill went
to zero.

5. How useful did you find the Public Information Centre? (please circle one)

Very Useful

1

2

3

4

5

Not Very Useful

6. How would you describe the nature of your interest in this study?

Member of the General Public (including resident)

Member of an Interest Group (Please specify: _____)

Consultant

Agency Representative (Please specify: _____)

Other (Please specify: _____)

7. Please provide any other comments regarding the Public Information Centre (i.e., location, help received on understanding study and your concerns, opportunity provided to ask questions/comments/express concern).

No negative issues that might be of concern.
Once this area is not familiar with land values.
Market, property values etc.

(NOTE: Your completed Comment Sheet will be included in the Environmental Screening Report.)

Please return this completed Comment Sheet to staff at the Registration Table or you can fax or mail it by, March 29, 2007 to:

Mr. Michael DeBock
Project Manager
FPLE Canadian Wind, ULC
5500 North Service Road, 8th Floor
Burlington, Ontario L7L 6W6
Phone: 905-335-4904 x222
Fax: 905-475-5994
Email: Michael.DeBock@fpl.com
Web-site: www.FPLEnergy.com

Mr. Sunil Kumar, P. Eng.
Project Manager
GENIVAR Ontario Inc.
600 Cochran Drive, Suite 500
Markham, Ontario L3R 5K3
Phone: 905-475-7270 Ext. 253
Fax: 905-475-5994
Email: sunil.kumar@genivar.com



FPL Energy

Conestogo Wind Farm Project: Environmental Screening Process

COMMENT SHEET PIC#1

March 7, 2007

FPL Energy is interested in hearing the community's comments, concerns and suggestions regarding the process and criteria for locating the wind turbines on the properties. Please take a few minutes to complete this brief comment sheet. All comments will be carefully considered in the Environmental Assessment Screening Process.

1. Do you have any comments related to the existing conditions in the study area?

2. Do you have any comments, concerns, questions or suggestions regarding the Environmental Screening Process or the overall approach being considered for siting of the wind turbines?

3. Do you have any comments, concerns, questions or suggestions regarding the proposed project or environmental information being gathered?

4. What do you see as the benefits of the proposed project from the perspective of your organization or as a resident of the area?

Jim Hunsler

Don't see any

5. How useful did you find the Public Information Centre? (please circle one)

Very Useful

Not Very Useful

6. How would you describe the nature of your interest in this study?

- Member of the General Public (including resident) _____
- Member of an Interest Group (Please specify: _____)
- Consultant _____
- Agency Representative (Please specify: _____)
- Other (Please specify: _____)

7. Please provide any other comments regarding the Public Information Centre (i.e., location, help received on understanding study and your concerns, opportunity provided to ask questions/comments/express concern).

(NOTE: Your completed Comment Sheet will be included in the Environmental Screening Report.)

Please return this completed Comment Sheet to staff at the Registration Table or you can fax or mail it by, March 29, 2007 to:

Mr. Michael DeBock
Project Manager
FPLE Canadian Wind, ULC
5500 North Service Road, 8th Floor
Burlington, Ontario L7L 6W6
Phone: 905-335-4904 x222
Fax: 905-475-5994
Email: Michael_DeBock@fpl.com
Web-site: www.FPLEnergy.com

Mr. Sunil Kumar, P. Eng.
Project Manager
GENIVAR Ontario Inc.
600 Cochran Drive, Suite 500
Markham, Ontario L3R 5K3
Phone: 905-475-7270 Ext. 253
Fax: 905-475-5994
Email: sunil.kumar@genivar.com



FPL Energy

Conestogo Wind Farm Project: Environmental Screening Process

COMMENT SHEET PIC#1

March 7, 2007

FPL Energy is interested in hearing the community's comments, concerns and suggestions regarding the process and criteria for locating the wind turbines on the properties. Please take a few minutes to complete this brief comment sheet. All comments will be carefully considered in the Environmental Assessment Screening Process.

1. Do you have any comments related to the existing conditions in the study area?

A Good Wind Area with Potential,
Few Environmental Issues.

2. Do you have any comments, concerns, questions or suggestions regarding the Environmental Screening Process or the overall approach being considered for siting of the wind turbines?

GLCA SHOULD HAVE AN ENVIRONMENTAL

IMPACT STUDY PREPARED BY MINISTRY OF

TRANSPORETS FOR HIGHWAY #6 REDESIGN. I

PERSONALLY DO NOT BELIEVE THERE IS ANY SIGNIFICANT
ENVIRONMENTAL IMPACT IF PROJECT PROCEEDS

3. Do you have any comments, concerns, questions or suggestions regarding the proposed project or environmental information being gathered?

None, ALTHOUGH IT WOULD BE INTERESTING
TO SEE THE WIND STUDIES

4. What do you see as the benefits of the proposed project from the perspective of your organization or as a resident of the area?

LOCAL POWER MAY ATTACK MORE

MANUFACTURING TO AREA, GENERALLY

THIS AREA SUPPORTS THE AUTO SECTOR.

5. How useful did you find the Public Information Centre? (please circle one)

Very Useful

Not Very Useful

6. How would you describe the nature of your interest in this study?

Member of the General Public (including resident)

Member of an interest group (Please specify: *And over, Bucks Valley*)

Consultant

Agency Representative (Please specify:)

Other (Please specify:)

7. Please provide any other comments regarding the Public Information Centre (i.e., location, help received on understanding study and your concerns, opportunity provided to ask questions/comments/express concern).

Will Review Knowledge Person

Very Pleasant

Mr. Michael DeBock

Project Manager

FPLE Canadian Wind, ULC

5500 North Service Road, 8th Floor

Burlington, Ontario L7L 6W6

Phone: 905-335-4904 x222

Fax: 905-475-5994

Email: Michael_DeBock@fpl.com

Web-site: www.FPLEnergy.com

Mr. Sunil Kumar, P.Eng.

Project Manager

GENIVAR Ontario Inc.

600 Cochran Drive, Suite 500

Markham, Ontario L3R 5K3

Phone: 905-475-7270 Ext. 253

Fax: 905-475-5994

Email: sunil.kumar@genivar.com

Please return this completed Comment Sheet to staff at the Registration Table or you can fax or mail it by, March 29, 2007 to:

(NOTE: Your completed Comment Sheet will be included in the Environmental Screening Report.)



FPL Energy

**Conestogo Wind Farm Project:
Environmental Screening Process**

Public Information Centre #1

March 7, 2007

SIGN-IN SHEET

Please Print Clearly

NAME	ADDRESS	POSTAL CODE	PHONE #	ADD TO MAILING LIST
BRAD MURPHY James Allen Murphree	RR2 Conestogo Village	K0R 1G0	939-6686	YES <input checked="" type="radio"/> NO
JOHN COCHRAN	RR #3 Hartwood	N0L 1A0	846-5555	YES <input checked="" type="radio"/> NO
ALEX HOREGAN	RR #1 Ardair	N0G 1M0	848-2138	YES <input checked="" type="radio"/> NO
John Snowe	7237 Jones Baseline RR #1, Ardair	N0G 1A0	848-5395	<input checked="" type="radio"/> YES NO
Dale Clark	RR2 Line 2 W. Luther	N0G 1A0	928-3493	<input checked="" type="radio"/> YES NO
Jennifer Clark	Line 2 W. Luther	N0G 1A0	928-3493	<input checked="" type="radio"/> YES NO
Dale Langdon	W. Luther	N0G 1A0	848-3853	<input checked="" type="radio"/> YES NO

Information gathered for use in this study only

Thank you for your participation in this study



FPL Energy

Conestogo Wind Farm Project:
Environmental Screening Process

Public Information Centre #1

March 7, 2007

SIGN-IN SHEET

Please Print Clearly

NAME	ADDRESS	POSTAL CODE	PHONE #	ADD TO MAILING LIST	
Karen Hunsberger	8740 Sideroad 25 West Carleton Place, L3C 9A1	L0N 1G0		<input checked="" type="radio"/> YES	<input type="radio"/> NO
Bill & Janice Richardson	R.R.#3 - 7437 1st Line Arthur	N0B 1A0		<input checked="" type="radio"/> YES	<input type="radio"/> NO
Roxanne Caughill	R.R. 4 7782 Arthur	N0G 1A0	519-848-5427	<input checked="" type="radio"/> YES	<input type="radio"/> NO
Phil Green	R.R. 4 7782 Arthur	N0G 1A0	519-848-5427	<input type="radio"/> YES	<input checked="" type="radio"/> NO
Sam Martin	R.R. 2 Alma ZGIG	N0B 1A0	519-638-2753	<input checked="" type="radio"/> YES	<input type="radio"/> NO
MARLA & JOHN GOLLINSBER	R.R. 2 Alma	N0B 1A0	519-846-5574	<input type="radio"/> YES	<input checked="" type="radio"/> NO
Logan Gibson & Janice	R.R. 2 Arthur	N0G 1A0	519 848 6223	<input type="radio"/> YES	<input checked="" type="radio"/> NO

Information gathered for use in this study only

Thank you for your participation in this study



FPL Energy

**Conestogo Wind Farm Project:
Environmental Screening Process**

Public Information Centre #1

March 7, 2007

SIGN-IN SHEET

Please Print Clearly

NAME	ADDRESS	POSTAL CODE	PHONE #	ADD TO MAILING LIST	
Alan Impact	RR#1 Arthur	N0G 1M0	(519) 848-5902	<input checked="" type="checkbox"/> YES	<input type="checkbox"/> NO
Ben Teyska	355 McLeod St Arthur	N0G 1H0	519 848 5347	<input type="checkbox"/> YES	<input checked="" type="checkbox"/> NO
Ernie's Corp	Box 7 Arthur	N0G 1A0	519 848 2817	<input checked="" type="checkbox"/> YES	<input type="checkbox"/> NO
A.J. Voal	2nd line West Garafrua	N0G 1A0	(519) 848-3076	<input type="checkbox"/> YES	<input type="checkbox"/> NO
RAY GILDER Kog Giller	4th Line West Lethbr	N0G 1A0	519-848-6985	<input checked="" type="checkbox"/> YES	<input type="checkbox"/> NO
Cathy Gilder	4th Line West Lethbr	N0G 1A0	519-848-6985	<input checked="" type="checkbox"/> YES	<input type="checkbox"/> NO
S Turling	RR#3 GRAND VALLEY	N0G 1G0		<input type="checkbox"/> YES	<input checked="" type="checkbox"/> NO

Information gathered for use in this study only

Thank you for your participation in this study



FPL Energy

Conestogo Wind Farm Project:
Environmental Screening Process

Public Information Centre #1

March 7, 2007

SIGN-IN SHEET

Please Print Clearly

NAME	ADDRESS	POSTAL CODE	PHONE #	ADD TO MAILING LIST	
Deight Eby	2 Shantz ^{Kollerstein} Place	N0B-2S0	519-669-1646	<input checked="" type="radio"/> YES	<input type="radio"/> NO
J. Douran	7369 1st Line RR#1A	N0B1A0	519-638-1101	<input checked="" type="radio"/> YES	<input type="radio"/> NO
P. SHEPHERD	" " "	" "	" "	<input checked="" type="radio"/> YES	<input type="radio"/> NO
JOHN DUFFY	PO BOX 567 113117 Sideroad 21/38 Grand Valley ON N4A1A0	L0N-1G0	519 728 3907	<input checked="" type="radio"/> YES	<input type="radio"/> NO
DAVID KELLY	R.R.#4 ARTHUR.		519.820.0151	<input checked="" type="radio"/> YES	<input type="radio"/> NO
Frances Gould	RR 1 Belwood			<input type="radio"/> YES	<input checked="" type="radio"/> NO
Darcy Weber	RR #1 Alno	N0B7H0	519 846-2014	<input checked="" type="radio"/> YES	<input type="radio"/> NO

Information gathered for use in this study only

Thank you for your participation in this study



FPL Energy

Conestogo Wind Farm Project:
Environmental Screening Process

Public Information Centre #1

March 7, 2007

SIGN-IN SHEET

Please Print Clearly

NAME	ADDRESS	POSTAL CODE	PHONE #	ADD TO MAILING LIST	
Dr Don Kanney	KK H) Arthur	N06 1A0	519 548 5600	<input checked="" type="radio"/> YES	<input type="radio"/> NO
John Sady	RR1 Elora	N6L 1S0	519 844 4817	<input checked="" type="radio"/> YES	<input type="radio"/> NO
DENNIS YOUNG	RR#3 Fergus	N1m 2W4	519 843-6375	<input checked="" type="radio"/> YES	<input type="radio"/> NO
PAUL KELLY	R.R.#1 ALMA	N0B 1A0	519 638-3296	<input checked="" type="radio"/> YES	<input type="radio"/> NO
Robert Hurdner Beel	7440 STANDCINE R.R.#3 ALTHAN	N0G 1A0	519-848-2982	<input checked="" type="radio"/> YES	<input type="radio"/> NO
RAY MASON	RR3 ALTHAN	N0G 1AG	416 994 1841	<input checked="" type="radio"/> YES	<input type="radio"/> NO
MIKE CUTY	RR2 ALTHAN	N0G 1A0	519 925-5668	<input type="radio"/> YES	<input type="radio"/> NO

Information gathered for use in this study only

Thank you for your participation in this study



FPL Energy

Conestogo Wind Farm Project:
Environmental Screening Process

Public Information Centre #1

March 7, 2007

SIGN-IN SHEET

Please Print Clearly

NAME	ADDRESS	POSTAL CODE	PHONE #	ADD TO MAILING LIST	
MARION B SMITH	RR #1 ARTHUR	N0G 1A0	848-2155	<input checked="" type="radio"/> YES	<input type="radio"/> NO
Helen Aitkin	RR 1 Arthur	N0G 1A0	848-5366	<input checked="" type="radio"/> YES	<input type="radio"/> NO
Flemming Gillette	RR1 Belwood	Nob-1J0	843-3692	<input checked="" type="radio"/> YES	<input type="radio"/> NO
OZ BURKHART	RR4 ARTHUR	N0G 1A0	848-3475	<input checked="" type="radio"/> YES	<input type="radio"/> NO
Barb Radden	RR1 Arthur	N0G 1A0	848-2557	<input checked="" type="radio"/> YES	<input type="radio"/> NO
D+B HOSES	RR1 ARTHUR	N0G 1A0	848 5174	<input checked="" type="radio"/> YES	<input type="radio"/> NO
MIKE DRABYK	RR2 ARTHUR	N0G 1A0	848 5659	<input checked="" type="radio"/> YES	<input type="radio"/> NO

Information gathered for use in this study only

Thank you for your participation in this study



FPL Energy

**Conestogo Wind Farm Project:
Environmental Screening Process**

Public Information Centre #1

March 7, 2007

SIGN-IN SHEET

Please Print Clearly

NAME	ADDRESS	POSTAL CODE	PHONE #	ADD TO MAILING LIST	
Dennis Weber	RR #2 Arthur	N0G 1A0	519 549-6210	YES	NO
Suzanne Lachaux	RR #2 Loretho	L0G 1C0	905 729 2257	YES	NO
Adi Rahadi	RR #2 Loretho	L0G 1C0	"	YES	NO
Gary Pondsack	8405 Line 6, Kenilworth	N0G 2E0	519 848 6662	YES	NO
Linda Horbathuk	RR2 Arthur	N0G 1A0	519 848 3857	YES	NO
Doug Weber	RR1 Alma	W0R 1A0	896-9263	YES	NO
ALBERT & SMITH	2368 Hwy 46 RR #1 ARTHUR	N0G 1A0	848 2155	YES	NO

Information gathered for use in this study only

Thank you for your participation in this study



FPL Energy

**Conestogo Wind Farm Project:
Environmental Screening Process**

Public Information Centre #1

March 7, 2007

SIGN-IN SHEET

Please Print Clearly

NAME	ADDRESS	POSTAL CODE	PHONE #	ADD TO MAILING LIST
HANS EISENBOCK	R.R. 2 ARTHUR	N0G-1A0	519-848-6165	YES <input checked="" type="checkbox"/> NO
BRIAN CAMERON	Rd 3 ARTHUR	N0G-1A0	519-848-6275	YES <input checked="" type="checkbox"/> NO
Bob Yonkers	Country Rd 17 Malahide	N0G-1A0	519-848-6275	YES <input checked="" type="checkbox"/> NO
Mark Van Buren	74 Woodwick St, Guelph Wellington County	N1N 2T9	519-837-2600 Ext. 1.208	YES <input checked="" type="checkbox"/> NO
Cheryl Dickson	Deffen County	K9W-2Z7	519-288-6401	YES <input checked="" type="checkbox"/> NO
Anita Dejong	R.R.3 Grand Valley	L0N 1G0	519-928-5740	YES <input checked="" type="checkbox"/> NO
Denise G. Gorman	P.O. Box 295 Guelph N0G-1A0		519-246-5533	YES <input checked="" type="checkbox"/> NO

Information gathered for use in this study only

Thank you for your participation in this study



FPL Energy

Conestogo Wind Farm Project:
Environmental Screening Process

Public Information Centre #1

March 7, 2007

1/ Some names on back of sheet

SIGN-IN SHEET

Please Print Clearly

NAME	ADDRESS	POSTAL CODE	PHONE #	ADD TO MAILING LIST	
J TERPSTRA	RR 1 Oakton	N0G 1A0	848 5902	YES	NO
L. & J Kozak	RR 2 Aluma	N0B 1A0	638 2551	YES	NO
M. Bugge	Box 412, R.R. 1 Arthur	N0G 1A0	848-3067	YES	NO
J Byrne	"	"	"	YES	NO
M. Townsend	R.R. #4, Arthur	N0G 1A0	848-5527	YES	NO
Dele Weber	RR #2 Arthur	"	848-6769	YES	NO
Karen Hunsberger	RR 3 Grand Valley	L0N 1G0	9282546	YES	NO

Information gathered for use in this study only

Thank you for your participation in this study



FPL Energy

**Conestogo Wind Farm Project:
Environmental Screening Process**

Public Information Centre #1

March 7, 2007

SIGN-IN SHEET

Please Print Clearly

NAME	ADDRESS	POSTAL CODE	PHONE #	ADD TO MAILING LIST	
				YES	NO
Stave & Gisel's Stensmo	R.R. #3 Arthur	N0G 1P0	519-843-2942	<input checked="" type="radio"/> YES	<input type="radio"/> NO
Richard Rowe	P.O. Box 1043 Arthur	N0G 1A0	519-848-2608	<input checked="" type="radio"/> YES	<input type="radio"/> NO
Glen & Sandra Franklin	RR #1 ALMA.	N0B 1A0	519-638-9958	<input checked="" type="radio"/> YES	<input type="radio"/> NO
DAVID MARY MARTIN	R.R. 3 ARTHUR	N0G 1A0	519-848-5031	<input type="radio"/> YES	<input checked="" type="radio"/> NO
Margaret Clarke	R4 ARTHUR.	N0G 1A0.	519.848.3544	<input checked="" type="radio"/> YES	<input type="radio"/> NO
H. GOVETT	R.R. 2 Arthur	N0G-1A0	519-848-5117	<input checked="" type="radio"/> YES	<input type="radio"/> NO
C. Heston	R.R. 2 ARTHUR	N0G-1A0	519-848-3632	<input checked="" type="radio"/> YES	<input type="radio"/> NO

Information gathered for use in this study only

Thank you for your participation in this study



FPL Energy

Conestogo Wind Farm Project:
Environmental Screening Process

Public Information Centre #1

March 7, 2007

SIGN-IN SHEET

Please Print Clearly

NAME	ADDRESS	POSTAL CODE	PHONE #	ADD TO MAILING LIST	
ARL Kammermeier	7222 Arthur	N0G 1A0	519-848-5910	<input checked="" type="checkbox"/> YES	<input type="checkbox"/> NO
Randy Buens	R4 Arthur 1011 INDUSTRIAL CR. UNIT 1	N0G 1A0	519-848-2484	<input type="checkbox"/> YES	<input checked="" type="checkbox"/> NO
DALE BENDER	ST. CLEMENTS	N0B 2M0	519 649 5225	<input checked="" type="checkbox"/> YES	<input type="checkbox"/> NO
Harold Baumann	RR#3 Arthur	N0G 1A0	519 848-5556	<input checked="" type="checkbox"/> YES	<input type="checkbox"/> NO
Kevin Douglas	RR#3 Arthur	N0G 1A0	848-2678	<input type="checkbox"/> YES	<input checked="" type="checkbox"/> NO
MARIE CARSTENSON	RR2 ARTHUR	N0G 1A0	848 5692	<input type="checkbox"/> YES	<input type="checkbox"/> NO
MARIE GEDENBERG	227 AVE DES PRÉS	S4S 1C5		<input checked="" type="checkbox"/> YES	<input type="checkbox"/> NO

Information gathered for use in this study only

Thank you for your participation in this study



FPL Energy

Conestogo Wind Farm Project:
Environmental Screening Process

Public Information Centre #1

March 7, 2007

SIGN-IN SHEET

Please Print Clearly

NAME	ADDRESS	POSTAL CODE	PHONE #	ADD TO MAILING LIST	
DONATA & ANDREY CANALI	1556 DUFFERIN ST.	M6H-3L6	416-658-4302	<input checked="" type="checkbox"/> YES	NO
Robert D Macdonald	REI ARTHUR	N0G1A0	519-848-5824	<input checked="" type="checkbox"/> YES	NO
Grill. Fugbans	R.R. # 2 Arthur		519-848-3164	YES	NO
Walt Thorne	RR#3 Grand Valley	L0N1G0	928-3496	<input checked="" type="checkbox"/> YES	NO
Colin Fugbans	RR3 GILIEL.	L0N1G0	928-3307	<input checked="" type="checkbox"/> YES	NO
John Miliard	RR1 Belwood	N0B1L6		<input checked="" type="checkbox"/> YES	NO
JOHN BOLLES	RR1 ARTHUR	N0G1A6	848-5147	YES	NO

Information gathered for use in this study only

Thank you for your participation in this study



FPL Energy

Conestogo Wind Farm Project:
Environmental Screening Process

Public Information Centre #1

March 7, 2007

SIGN-IN SHEET

Please Print Clearly

NAME	ADDRESS	POSTAL CODE	PHONE #	ADD TO MAILING LIST	
Leo & Jean Favre	Chene	N0B 1A0	519 846 5185	YES ✓	NO
KAREL & FERDY FERDY	Wendy's	N0G 1A0	519 842 6245	YES ✓	NO
Dee & Patrick McLaughlin	8524 Hwy 6, RR2 (Dundas)	N0G 1A0	519 848-3000	YES ✓	NO
JOHN HOF	836 LANE 2 WEAVER	N0G 1A0	519 848 2541	YES ✓	NO
VAL & KEN BROWN	ALMA	N0B 1A0		YES	NO
BIL & DARLENE	Berkwood	N0B 1J0	848-2195	YES ✓	NO
TOBY ROWE	P.O. Box 102 FERGUS	N1M 2A7	843 1288	YES ✓	NO

Information gathered for use in this study only

Thank you for your participation in this study



FPL Energy

Conestogo Wind Farm Project:
Environmental Screening Process

Public Information Centre #1

March 7, 2007

SIGN-IN SHEET

Please Print Clearly

NAME	ADDRESS	POSTAL CODE	PHONE #	ADD TO	
				MAILING LIST	
Nancy Foley	RR 1 Arthur	N0G 1A0	519 843 5785	YES	<input checked="" type="radio"/> NO
H. FAULTH	Box Road 20	N0B 1J0	519-823-2337	<input checked="" type="radio"/> YES	NO
DENNIS FREY	RR 4 Arthur	N0G 1A0	519 848-5928	<input checked="" type="radio"/> YES	NO
Heather G. SHEPSTONK	RR # 2 Arthur	N0G 1A0	519-848-6539	YES	NO
CARL SHEPSTONK	RR 3 ARTHUR	N0G 1A0	519-848-2380	YES	NO
Jim HUSTLER	R.R. 3 ARTHUR	N0G 1A0	519-766-6198 519-848-2740	<input checked="" type="radio"/> YES	NO
Rick Strassler	RR 2 Belwood	N0B 1T0	519 843 4225	<input checked="" type="radio"/> YES	NO

Information gathered for use in this study only

Thank you for your participation in this study



FPL Energy

Conestogo Wind Farm Project:
Environmental Screening Process

Public Information Centre #1

March 7, 2007

SIGN-IN SHEET

Please Print Clearly

NAME	ADDRESS	POSTAL CODE	PHONE #	ADD TO MAILING LIST	
Rodger Ireland	292 CLARKE ST. R2 Arthur	N0G-1A0	848-3724	<input checked="" type="radio"/> YES	<input type="radio"/> NO
Gary Martin	8636 Well. City Rd 16 7175 14th line	N0G 1A0	848-2886	<input checked="" type="radio"/> YES	<input type="radio"/> NO
Raymond Martin	RL along N. 7519 1st line	N0G 1A0	846-5198	<input checked="" type="radio"/> YES	<input type="radio"/> NO
Chris OLSON	RR#7 Arthur	N0G 1A0	848-6084	<input checked="" type="radio"/> YES	<input type="radio"/> NO
Paula	RR#3 Arthur	N0G 1A0	848-5388	<input checked="" type="radio"/> YES	<input type="radio"/> NO
Rock Nauta	RR#4 Arthur	N0G 1A0	848-6114	<input checked="" type="radio"/> YES	<input type="radio"/> NO
F CONNERT	RR#1 BELWOOD	N0G 150	843-4985	<input checked="" type="radio"/> YES	<input type="radio"/> NO

Information gathered for use in this study only

Thank you for your participation in this study